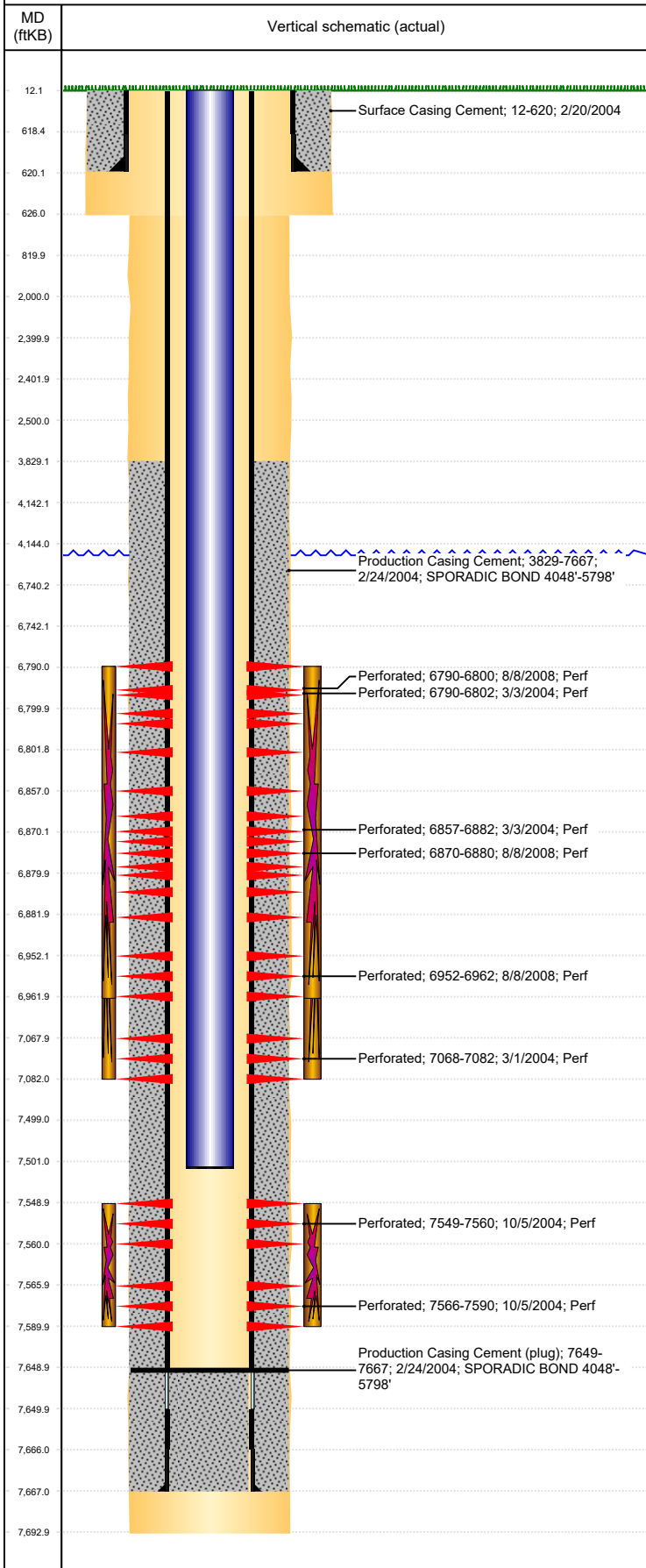




# P&A Wellbore For State

Well Name: OSTER 20-19

Land, Original Hole, 7/6/2022 1:59:45 PM



## Well Header

Surface UWI 0512321993	Business Unit Rockies	Gov Auth Dist	Prod Tree Loc Land
Orig. KB to Gnd (ft) 12.00	Original Spud Date 2/19/2004	Abandon Date	Well Sub-Status SI
High... N			
Comment			

## Surface Location (Congressional)

Qtr 3 SW	Qtr 4 SE	Section 19	Twtnsh... 4	Twtnsh... N	Range 64	Rng E/... W	Latitude (°) 40.294217	Longitude (°) -104.589128
-------------	-------------	---------------	----------------	----------------	-------------	----------------	---------------------------	------------------------------

## Wellbore Sections

Section Des	Hole Size (in)	Act Top (ftKB)	Act Btm (ftKB)
SURFACE	12 1/4	12.0	626.0
PRODUCTION	7 7/8	626.0	7,693.0

## Casing Strings

Csg Des	Run Date	OD (in)	Wt/Len (lb/ft)	Grade	Top Depth (MD) (ftKB)	Set Depth (MD) (ftKB)
Surface	2/20/2004	8 5/8	24.00	J-55	12	620
Production Casing	2/24/2004	4 1/2	11.60	I-80	12	7667

## Cement

Des	Start Date	Top (ftKB)	Btm (ftKB)
Surface Casing Cement	2/20/2004	12.0	620.0
Production Casing Cement	2/24/2004	3,829.0	7,667.0

## Zone Statuses

Zone Name	Status Date	Status	Fluid Type	Job	Prod Method
J SAND	9/24/2008	PR	Water	RE-FRAC, 7/25/2008 00:00	Flowing
J SAND	1/27/2014	PR		RE-FRAC, 7/25/2008 00:00	
NIOBRARA	9/24/2008	PR		RE-FRAC, 7/25/2008 00:00	Flowing
NIOBRARA	1/27/2014	PR		RE-FRAC, 7/25/2008 00:00	
CODELL	9/24/2008	PR		RE-FRAC, 7/25/2008 00:00	Flowing
CODELL	1/27/2014	PR		RE-FRAC, 7/25/2008 00:00	
NIOBRARA-CO...	1/27/2014	PR	Water		Flowing

## Perforation Data

Linked Zone	Explosive Type	Entered Shot Total	Top (ftKB)	Btm (ftKB)	Date
NIOBRARA, Original Hole	A	20	6,790.0	6,800.0	8/8/2008
NIOBRARA, Original Hole	A	12	6,790.0	6,802.0	3/3/2004
NIOBRARA, Original Hole	B	11	6,857.0	6,882.0	3/3/2004
NIOBRARA, Original Hole	B	20	6,870.0	6,880.0	8/8/2008
NIOBRARA, Original Hole	C	20	6,952.0	6,962.0	8/8/2008
CODELL, Original Hole		14	7,068.0	7,082.0	3/1/2004
J SAND, Original Hole		33	7,549.0	7,560.0	10/5/2004
J SAND, Original Hole		72	7,566.0	7,590.0	10/5/2004

## Stimulation Intervals

Zone	Start Date	Top (ftKB)	Btm (ftKB)
NIOBRARA-CODELL, Original Hole	3/4/2004	6,790.0	7,082.0
NIOBRARA, Original Hole	8/13/2008	6,790.0	6,962.0
J SAND, Original Hole	10/8/2004	7,549.0	7,590.0

## Other In Hole

Run Date	Des	Make	OD (in)	Top (ftKB)	Btm (ftKB)

## Logs

Date	Type	Depth Top (MD) (ftKB)	Btm (ftKB)
2/24/2004	CEMENT EVALUATION	622	7,672.0
2/24/2004	COMPENSATED NEUTRON	4,000	7,672.0
2/24/2004	GAMMA RAY	4,000	7,672.0
2/24/2004	INDUCTION	622	7,682.0
3/1/2004	CBL/CCL/GR	3,550	7,638.0
3/1/2004	PERFORATION	7,500	7,638.0
3/3/2004	PERFORATION	6,638	6,880.0
8/8/2008	BRIDGE PLUG SETTING	6,600	6,900.0

## Plug Back Total Depths

Date	Type	Com	PBTD (ftKB)
10/11/2004	FILL	CLEAN OUT	7,649
9/15/2008	PLUG REMNANTS	DRILL CIBP AND CLEAN OUT TO PBTD	7,649