

WELL LOCATION

SECTION 35, TOWNSHIP 12S, 1

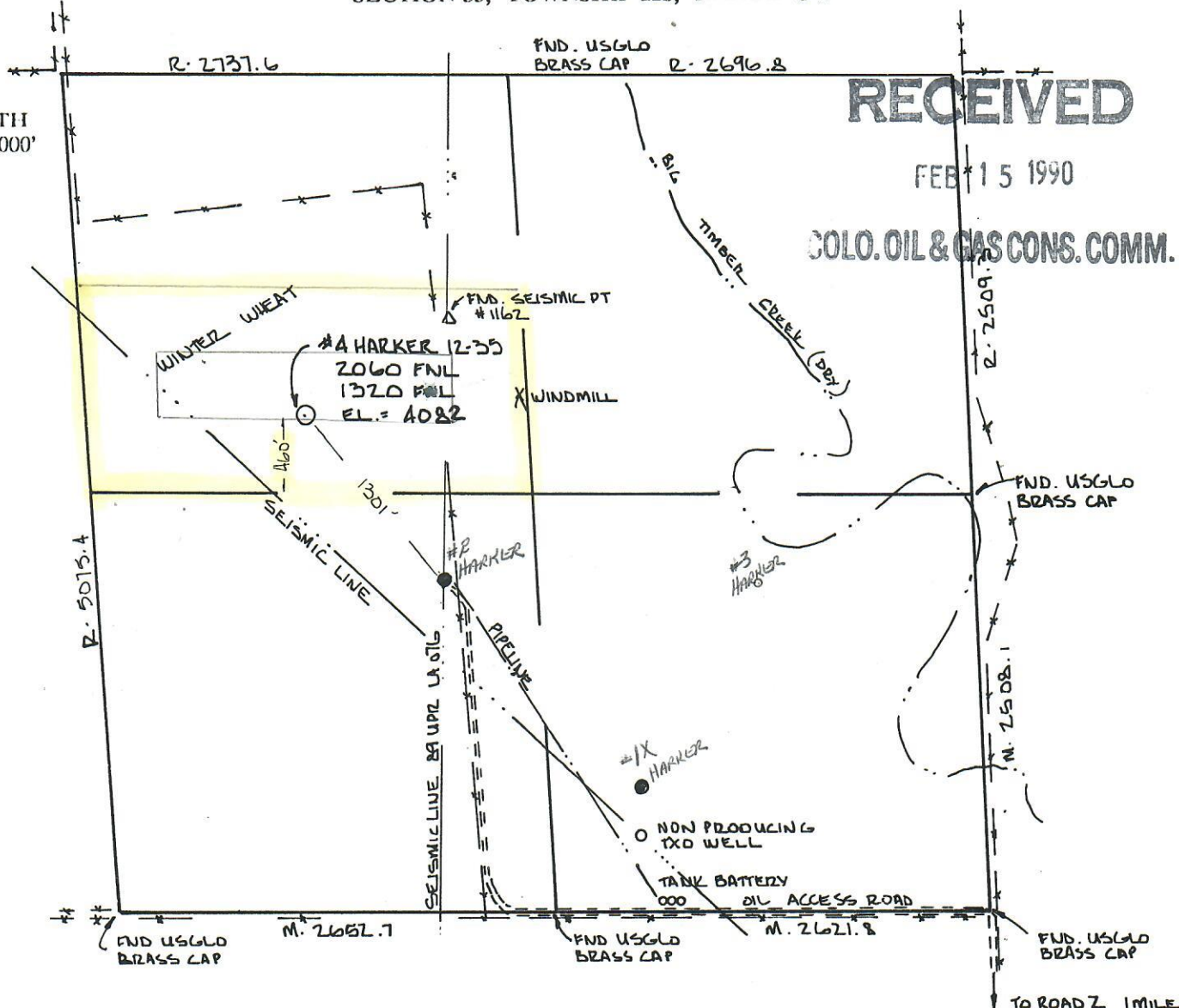


NORTH
1" = 1000'

RECEIVED

FEB 15 1990

COLO. OIL & GAS CONS. COMM.



NOTE: WELL ELEVATION IS BASED ON SEISMIC POINT #1162. EL. = 4070.66

: THIS IS NOT A LAND SURVEY OR LAND SURVEY PLAT.

LEGEND:

- WELL LOCATION SET REBAR AND METAL T-POST
- *** FENCE LINE
- PRODUCING WELLS
- === DIRT ACCESS ROAD
- M. 2621.8 FIELD MEAS DIST
- R. 5088.1 RECORD DIST.



REVISE LOCATION 2-07-90

Job No. 5107-33.1

GEOSURV

E. J. Grabowski
1419 Cypress Circle
Lafayette, CO 80026
303-666-0379

Scale	1"=1000'	
Surveyed	ELG	1-90
Field Book	3	
Calculated	ELG	
Drawn	ELG	1-90

UNION PACIFIC RESOURCES

#4 Harker 12 - 35
NW 1/4
Section 35, T12S, R43W
Cheyenne County, Colorado