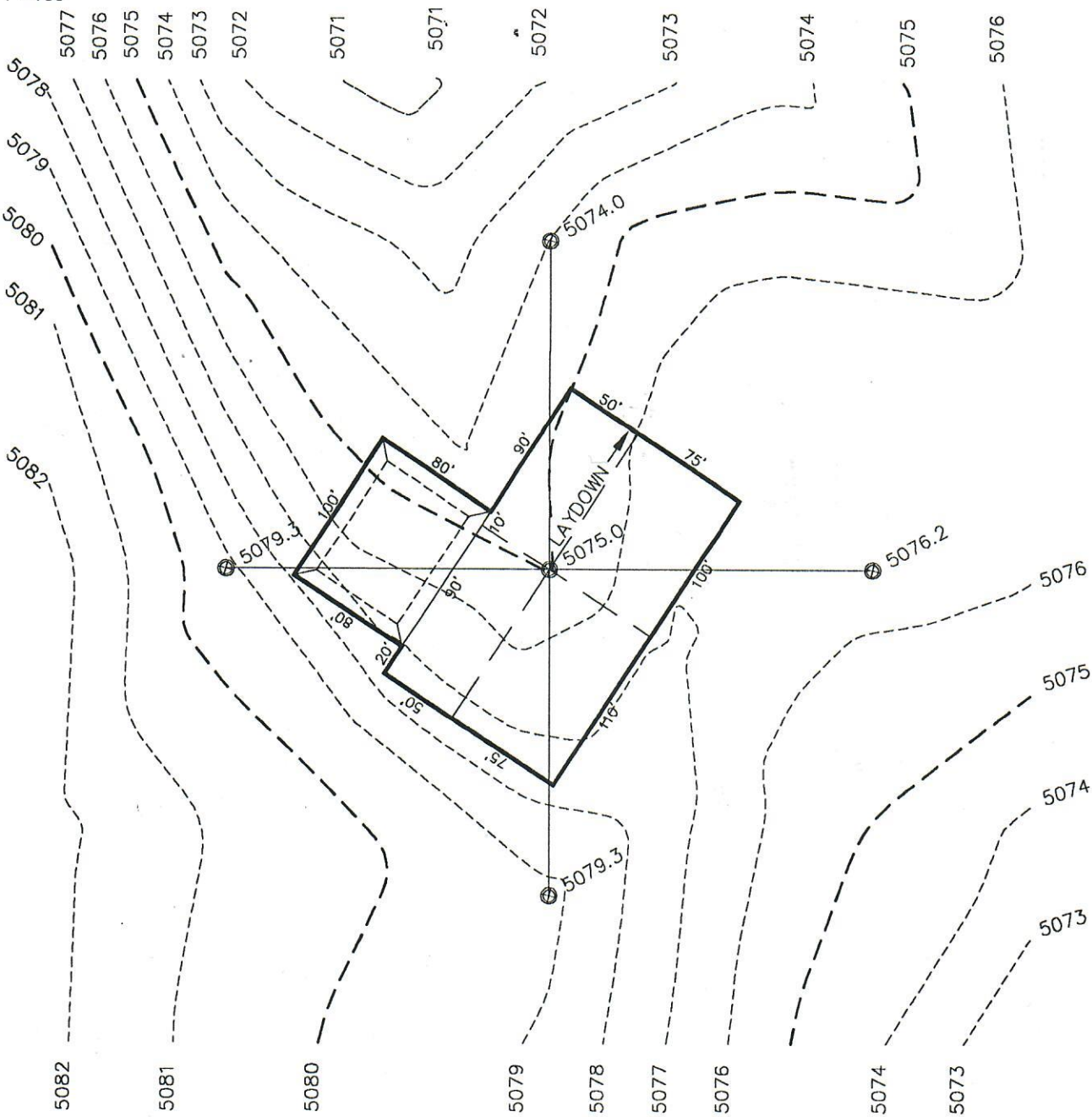


EXHIBIT "C3"



JOB #	94047
DATE	3/26/94
FIELD CR	eig/rdt
TDS/RW5	speakf8
CONTROL	SPEAKER
DRAWN	DCC
DWG. #	94047

GEO SURV
 LAND SURVEYORS
 P.O. BOX 194
 LAFAYETTE
 COLO • 80026
 303•666-0379

PROPOSED PAD LAYOUT
 PREPARED FOR
UNION PACIFIC RESOURCES
#2 COLMENO 21-30
 NW 1/4 SECTION 30 T11S R50W 6th PM
 KIT CARSON COUNTY, COLORADO