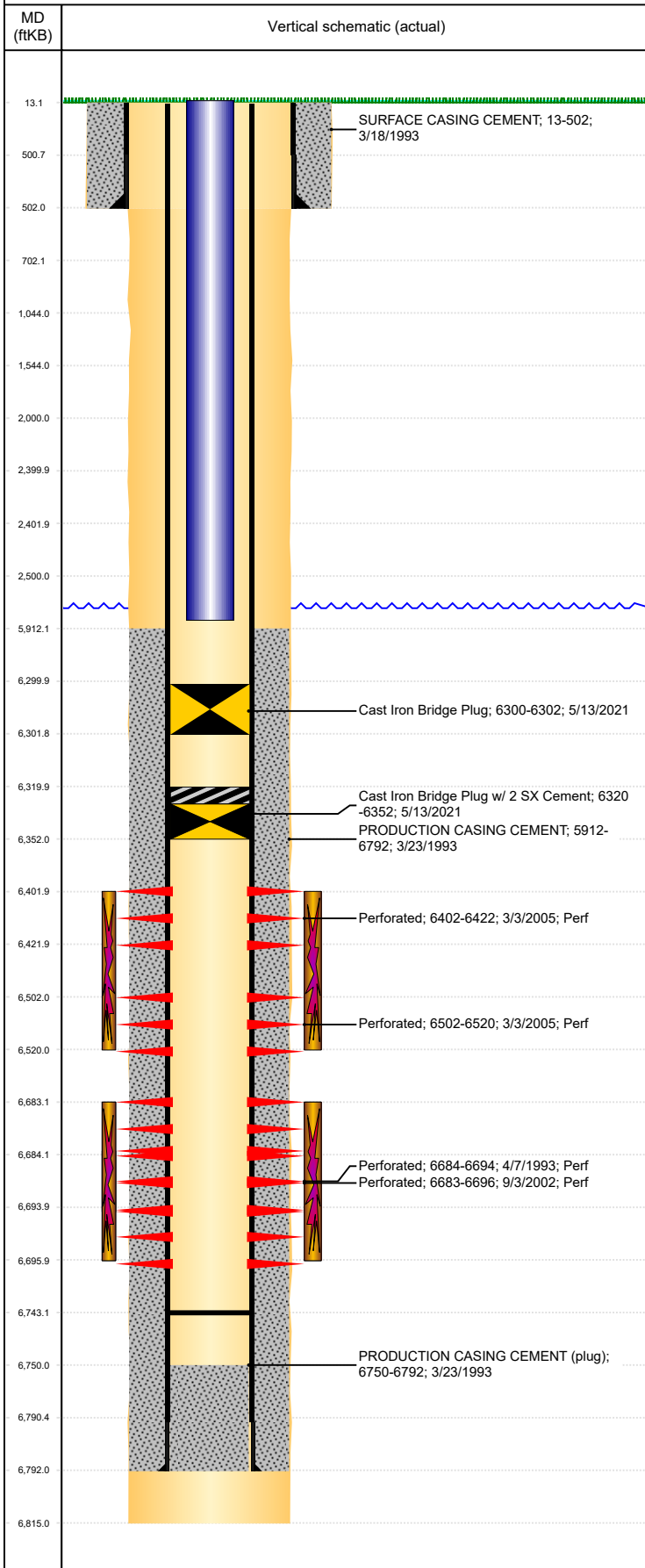




P&A Wellbore For State

Well Name: UPRC 23-4A

Land, Original Hole, 7/2/2022 11:50:23 AM



Well Header									
Surface UWI 0512316107			Business Unit Rockies			Gov Auth Dist		Prod Tree Loc Land	
Orig. KB to Gnd (ft) 13.00		Original Spud Date 3/18/1993		Abandon Date		Well Sub-Status TA			High... N
Comment FIELD OPS NOTICE- FLOWLINES ABANDONED PER RULE 1103, RCVD 8/30/17.									
Surface Location (Congressional)									
Qtr 3 NW	Qtr 4 NW	Section 23	Twnshp 5	Twنش... N	Range 64	Rng E/... W	Latitude (°) 40.39027627 4	Longitude (°) -104.524484776	
Wellbore Sections									
Section Des			Hole Size (in)			Act Top (ftKB)		Act Btm (ftKB)	
SURFACE			12 1/4			13.0		502.0	
PRODUCTION			7 7/8			502.0		6,815.0	
Casing Strings									
Csg Des			Run Date		OD (in)	Wt/Len (lb/ft)	Grade	Top Depth (MD) (ftKB)	Set Depth (MD) (ftKB)
Surface			3/18/1993		8 5/8	23.00	M-50	13	502
Production Casing			3/23/1993		4 1/2	11.60	WC-75	13	6792
Cement									
Des					Start Date		Top (ftKB)		Btm (ftKB)
SURFACE CASING CEMENT					3/18/1993		13.0		502.0
PRODUCTION CASING CEMENT					3/23/1993		5,912.0		6,792.0
Zone Statuses									
Zone Name		Status Date	Status	Fluid Type	Job			Prod Method	
NIOBRARA		3/10/2005	PR		RECOMPLETION, 3/2/2005 00:00				
NIOBRARA		5/13/2021	AB		CIBP, 5/12/2021 06:00				
CODELL		10/16/2006	PR		TRI-FRAC, 8/21/2006 00:00				
CODELL		5/13/2021	AB		CIBP, 5/12/2021 06:00				
Perforation Data									
Linked Zone			Explosive Type	Entered Shot Total	Top (ftKB)		Btm (ftKB)		Date
NIOBRARA, Original Hole				120	6,402.0		6,422.0		3/3/2005
NIOBRARA, Original Hole				108	6,502.0		6,520.0		3/3/2005
CODELL, Original Hole				52	6,683.0		6,696.0		9/3/2002
CODELL, Original Hole				20	6,684.0		6,694.0		4/7/1993
Stimulation Intervals									
Zone				Start Date		Top (ftKB)		Btm (ftKB)	
NIOBRARA, Original Hole				3/9/2005		6,402.0		6,520.0	
CODELL, Original Hole				9/11/2002		6,683.0		6,696.0	
CODELL, Original Hole				9/11/2006		6,683.0		6,696.0	
CODELL, Original Hole				4/8/1993		6,684.0		6,694.0	
Other In Hole									
Run Date		Des			Make		OD (in)	Top (ftKB)	Btm (ftKB)
5/13/2021		Cast Iron Bridge Plug w/ 2 SX Cement					4	6,320.0	6,352.0
5/13/2021		Cast Iron Bridge Plug					4	6,300.0	6,302.0
Logs									
Date		Type					Depth Top (MD) (ftKB)		Btm (ftKB)
3/22/1993		COMPENSATED DENSITY					2,500		6,813.0
3/22/1993		INDUCTION					455		6,813.0
4/3/1993		CEMENT BOND					5,700		6,743.0
6/17/2016		GYRO					0		6,600.0
Plug Back Total Depths									
Date		Type			Com				PBTD (ftKB)
4/3/1993		FILL			DEPTH LOGGER ON CBL				6,750
9/13/2006		FILL			CLEAN OUT TO LAND TUBING UNABLE TO CLEAN DOWN TO PBTD				6,743