

Inspection Photos

Location Name: TEP ROCKY MOUNTAIN LLC T & T Assoc. LTD /PA 21-7

Location ID: 420224



Photo #6986 from entrance to location.



Photo #6987 from entrance to location.

Inspection Photos

Location Name: TEP ROCKY MOUNTAIN LLC T & T Assoc. LTD /PA 21-7

Location ID: 420224



Photo #6988 from entrance to location.



Photo #6989 from entrance to location.

Inspection Photos

Location Name: TEP ROCKY MOUNTAIN LLC T & T Assoc. LTD /PA 21-7

Location ID: 420224



Photo #6992 Undesirable plant species in tank containment.



Photo #6993 Undesirable plant species in tank containment

Inspection Photos

Location Name: TEP ROCKY MOUNTAIN LLC T & T Assoc. LTD /PA 21-7

Location ID: 420224



Photo #6994 Undesirable plant species in tank containment



Photo #6995 Unused equipment.

Inspection Photos

Location Name: TEP ROCKY MOUNTAIN LLC T & T Assoc. LTD /PA 21-7

Location ID: 420224



Photo #6996 Unused supplies.



Photo #6997 Unused equipment.

Inspection Photos

Location Name: TEP ROCKY MOUNTAIN LLC T & T Assoc. LTD /PA 21-7

Location ID: 420224



Photo #6998 Unused equipment.



Photo #6999 Unused equipment.

Inspection Photos

Location Name: TEP ROCKY MOUNTAIN LLC T & T Assoc. LTD /PA 21-7

Location ID: 420224



Photo #7001 Rill erosion occurring on cut slope.



Photo #7002 Rill erosion occurring on cut slope.

Inspection Photos

Location Name: TEP ROCKY MOUNTAIN LLC T & T Assoc. LTD /PA 21-7

Location ID: 420224



Photo #7003 Rill erosion occurring on cut slope.



Photo #7004 Sediment migrating into ditch.

Inspection Photos

Location Name: TEP ROCKY MOUNTAIN LLC T & T Assoc. LTD /PA 21-7

Location ID: 420224



Photo #7006 Rill erosion occurring on cut slope.



Photo #7007 Sediment migrating into ditch.

Inspection Photos

Location Name: TEP ROCKY MOUNTAIN LLC T & T Assoc. LTD /PA 21-7

Location ID: 420224



Photo #7008 Location lacks stabilization.



Photo #7009 Location lacks stabilization.

Inspection Photos

Location Name: TEP ROCKY MOUNTAIN LLC T & T Assoc. LTD /PA 21-7

Location ID: 420224



Photo #7010 Location lacks stabilization.



Photo #7021 Edge of disturbance and edge of working surface of location/access road.

Inspection Photos

Location Name: TEP ROCKY MOUNTAIN LLC T & T Assoc. LTD /PA 21-7

Location ID: 420224



Photo #7017 Construction area from location.



Photo #7016 Construction area from location.

Inspection Photos

Location Name: TEP ROCKY MOUNTAIN LLC T & T Assoc. LTD /PA 21-7

Location ID: 420224

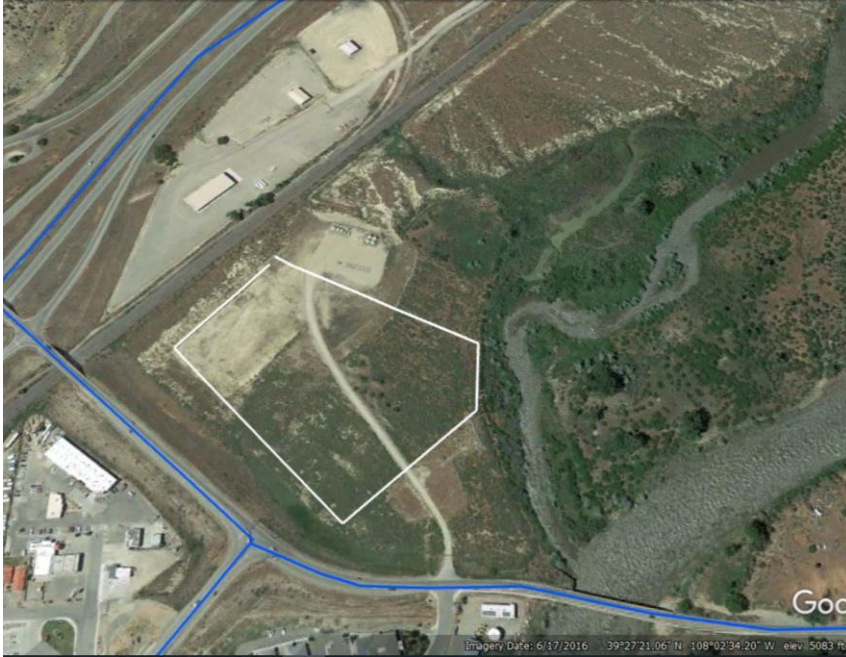


Photo #7019 Approximate construction area.

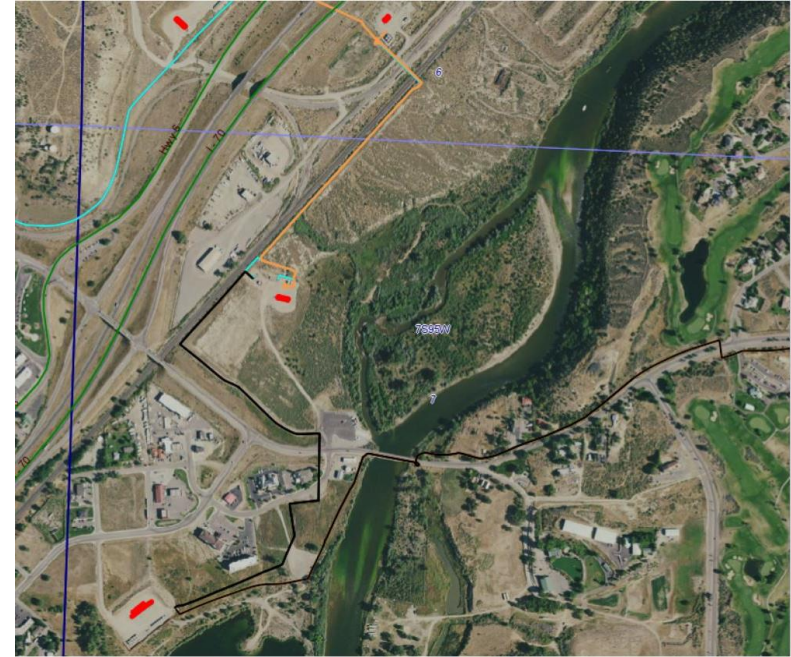


Photo #7030 TEP pipe lines.



MAPGUIDE

- [Disclaimer](#)
- [FAQs](#)
- [Flowlines](#)
- [Map Layers](#)
- [Map User](#)
- [Other Bro](#)

This screen
various map
redlining
distances o
used.

**Need he
working?**

Please con

David Gate
david.gates
(303) 894-2

**NOTE - Ma
smart-phon
not work wi**



COLORADO
Oil & Gas Conservation
Commission
Department of Natural Resources

Inspection Photos

Location Name: TEP ROCKY MOUNTAIN LLC T & T Assoc. LTD /PA 21-7

Location ID: 420224



Photo #7022 Location from TEP pipe line right of way.



Photo #7023 Marked pipe line right of way.

Inspection Photos

Location Name: TEP ROCKY MOUNTAIN LLC T & T Assoc. LTD /PA 21-7

Location ID: 420224



Photo #7025 TEP pipe line right of way.

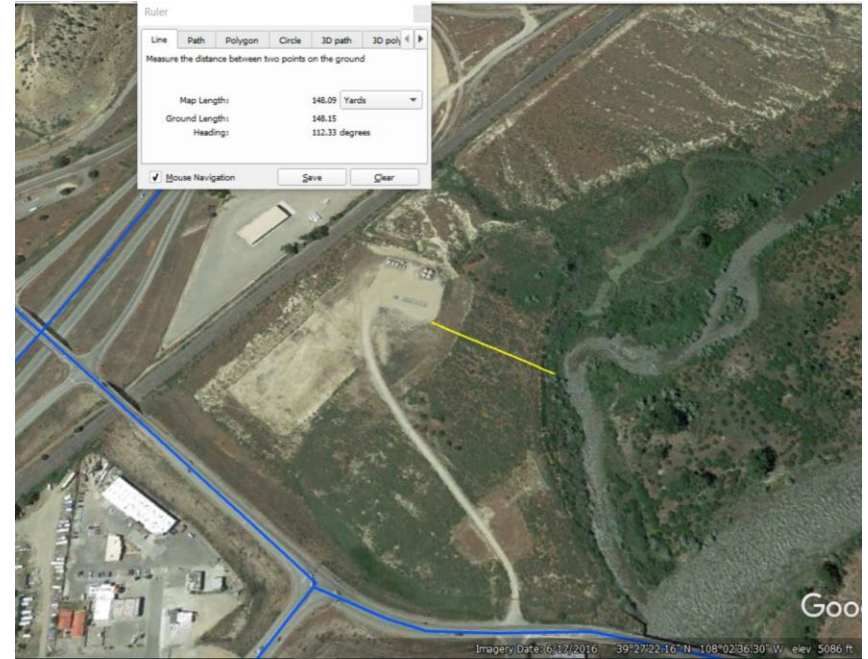


Photo #7026 Distance to Colorado river.