

Location Name: Isle Dome Pit ID: 116587; Spill ID: 482343



Sign and access via County Road LY5.



Outfall of culvert beneath County Road LY5. Oily impacted vegetation and oil on the water surface. Booms are placed down gradient.

Inspection Photos June 22, 2022
Location Name: Isle Dome Pit ID: 116587; Spill ID: 482343



Outfall of culvert beneath County Road LY5. Oily impacted vegetation and oil observed on the water surface. Booms are placed down gradient.



Up gradient of culvert beneath County Road LY5. Oily impacted vegetation and oil observed on the water surface.

Inspection Photos June 22, 2022

Location Name: Isle Dome Pit ID: 116587; Spill ID: 482343



Up gradient of culvert. Note the oily algae mat and hydrocarbon sheen on the water surface.

Up gradient of culvert. Note the oily algae mat and hydrocarbon sheen on the water surface.



COLORADO
Oil & Gas Conservation
Commission
Department of Natural Resources

Inspection Photos June 22, 2022

Location Name: Isle Dome Pit ID: 116587; Spill ID: 482343



Boom down gradient of Pit Facility ID: 116587 discharge.



Boom approximately 100 feet down gradient of Pit Facility ID: 116587 discharge. Oily stained vegetation observed and hydrocarbon odor noted.



COLORADO
Oil & Gas Conservation
Commission
Department of Natural Resources

Inspection Photos June 22, 2022

Location Name: Isle Dome Pit ID: 116587; Spill ID: 482343



Boom approximately 100 feet down gradient of Pit Facility ID: 116587 discharge. Oily stained vegetation observed and hydrocarbon odor noted.



Boom approximately 100 feet down gradient of Pit Facility ID: 116587 discharge. Oily stained vegetation observed and hydrocarbon odor noted.



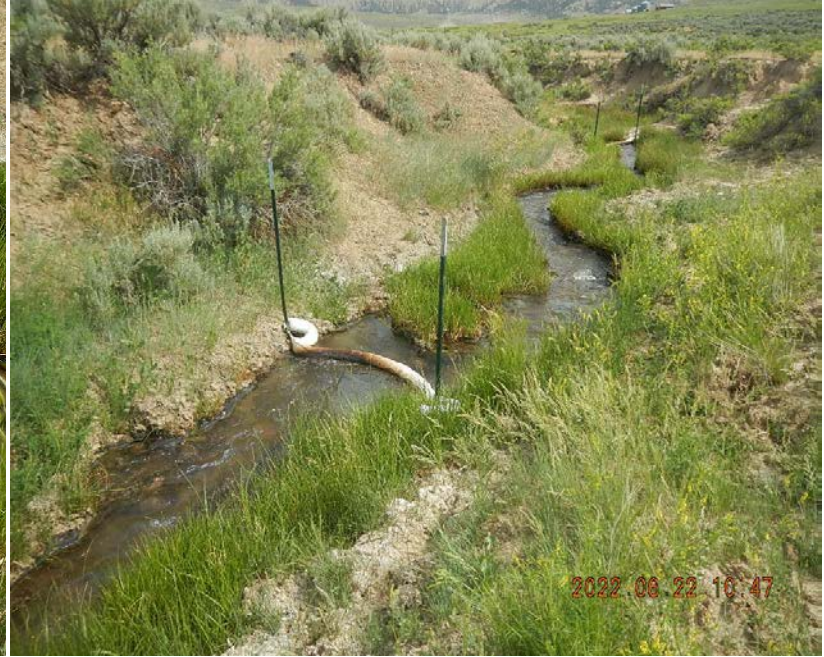
COLORADO
Oil & Gas Conservation
Commission
Department of Natural Resources

Inspection Photos June 22, 2022

Location Name: Isle Dome Pit ID: 116587; Spill ID: 482343



Boom approximately 70 feet down gradient of Pit Facility ID: 116587 discharge. Oily stained vegetation observed and hydrocarbon odor noted.



Boom approximately 70 feet down gradient of Pit Facility ID: 116587 discharge. Oily stained vegetation observed and hydrocarbon odor noted.



COLORADO
Oil & Gas Conservation
Commission
Department of Natural Resources

Inspection Photos June 22, 2022
Location Name: Isle Dome Pit ID: 116587; Spill ID: 482343



Boom at Pit Facility ID: 116587 discharge. Oily stained vegetation observed and hydrocarbon odor noted.



Boom at Pit Facility ID: 116587 discharge. Oily stained vegetation observed and hydrocarbon odor noted.