



**Compensated Neutron
Gamma Ray Collar
Log**

Company Caerus Piceance LLC.
Well BJU G35 Fed 14D-35-496
Field Grand Valley
County Garfield
State Colorado

Location: API #: 05-045-24345
Other Services RCBL
SEC 35 TWP 4S RGE 96W
Permanent Datum Ground Level Elevation 8166'
Log Measured From Kelly Bushing
Drilling Measured From Kelly Bushing
Elevation K.B. 8196'
D.F. 8195'
G.L. 8166'

Date	23-JUN-2022
Run Number	One
Depth Driller	12012 FT
Depth Logger	11851 FT
Bottom Logged Interval	11843 FT
Top Log Interval	7320 FT
Open Hole Size	8.750"
Type Fluid	Fresh Water
Density / Viscosity	8.34 lb/gal
Max. Recorded Temp.	---
Estimated Cement Top	---
Time Well Ready	ROA
Time Logger on Bottom	8:20
Equipment Number	8047
Location	Grand Junction Colo
Recorded By	P. Edwards
Witnessed By	C. Woodmansee

Borehole Record		Tubing Record					
Run Number	Bit	From	To	Size	Weight	From	To
Two	8.75"	Surface	12012'				

Casing Record	Size (in)	Wgt (lbs/ft)	Grade	Top	Bottom
Surface Casing	9.625"	36	J-55	Surface	3035.8 FT
Intermediate #1	4.5"	11.6	P-110	Surface	12004.5 FT
Intermediate #2					
Liner					

<<< Fold Here >>>

All interpretations are opinions based on inferences from electrical or other measurements and we cannot and do not guarantee the accuracy or correctness of any interpretation, and we shall not, except in the case of gross or willful negligence on our part, be liable or responsible for any loss, costs, damages, or expenses incurred or sustained by anyone resulting from any interpretation made by any of our officers, agents or employees. These interpretations are also subject to our general terms and conditions set out in our current Price Schedule.

Comments

Log ran as per customer request.
Depth referenced to Kelly Bushing @ 30FT
Marker Joint from 8022 FT - 8032 FT
Log ran from 11851 FT to 7320 FT
Log ran with 0 PSI surface induced pressure.

Thank you for choosing The Wireline Group!!!



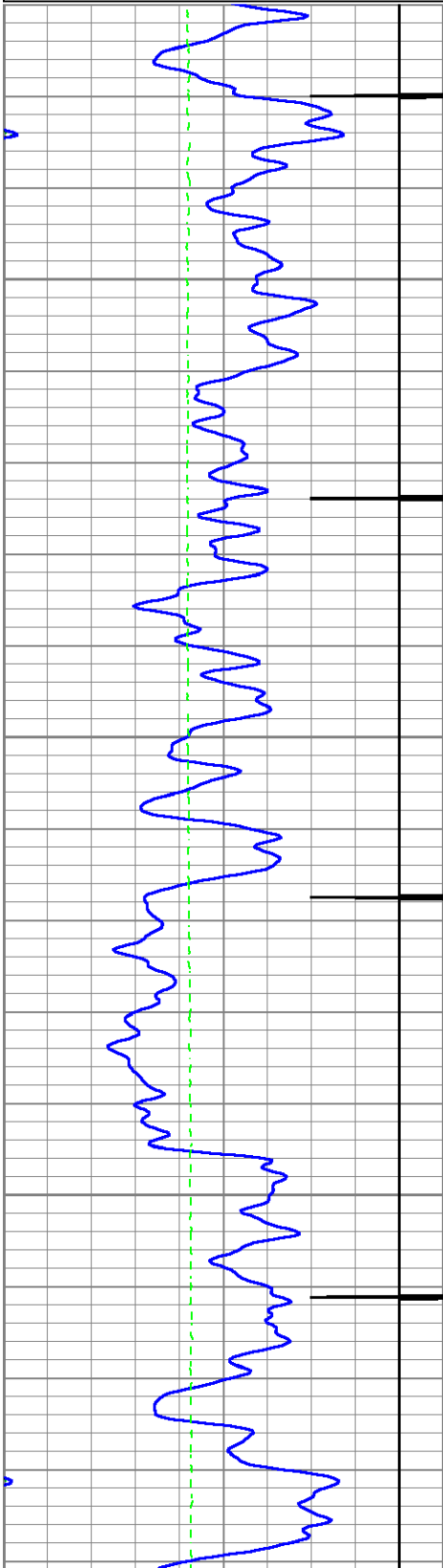
Main Pass 5" = 100'

Database File caerus_14d-35_rcbl_cnl_6-22-2022.db
 Dataset Pathname main1
 Presentation Format twg_cnl
 Dataset Creation Thu Jun 23 12:26:12 2022
 Charted by Depth in Feet scaled 1:240

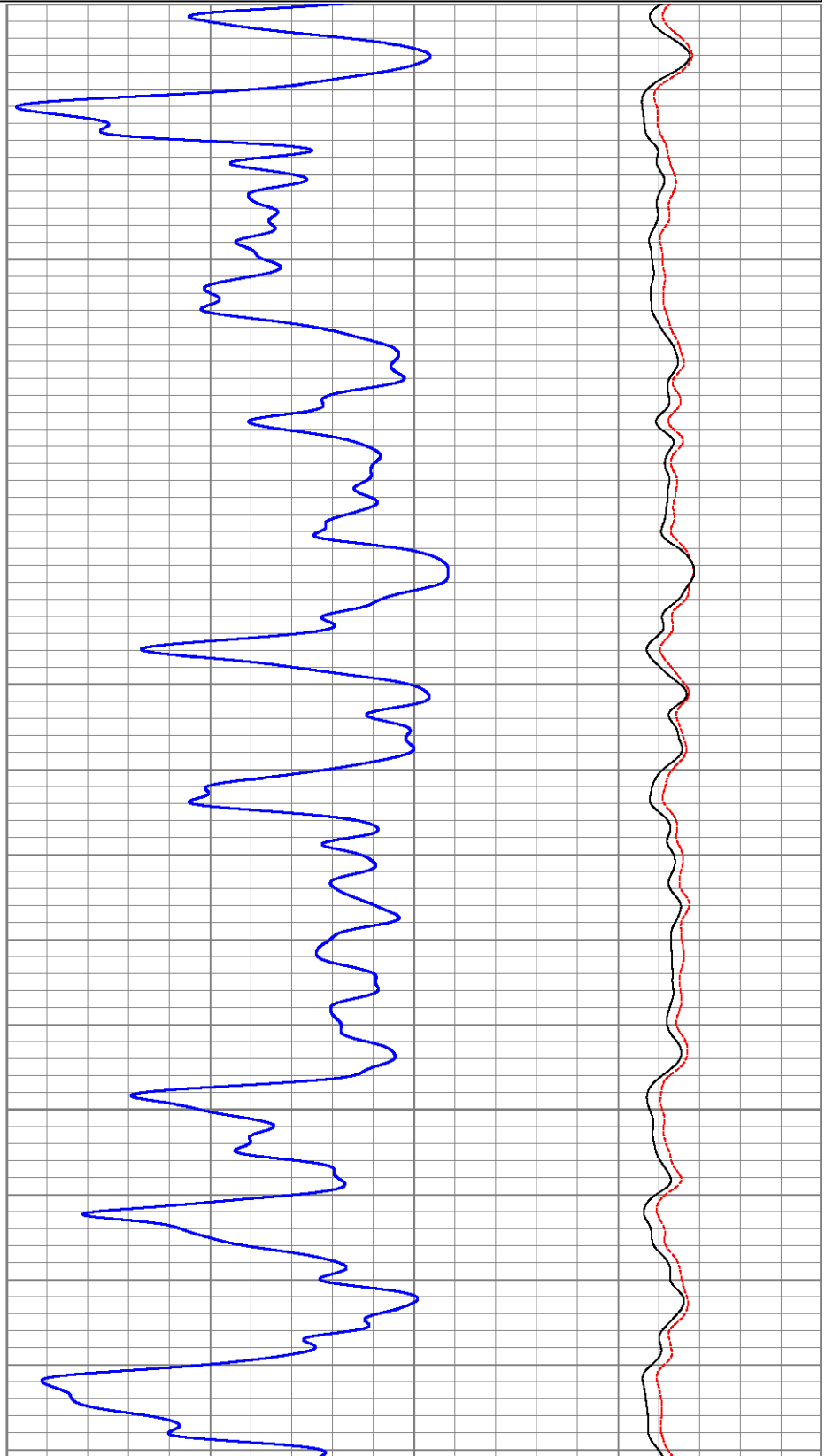
0	GR (GAPI)	200
9	CCL	-1
0	Line Tension (lb)	4000

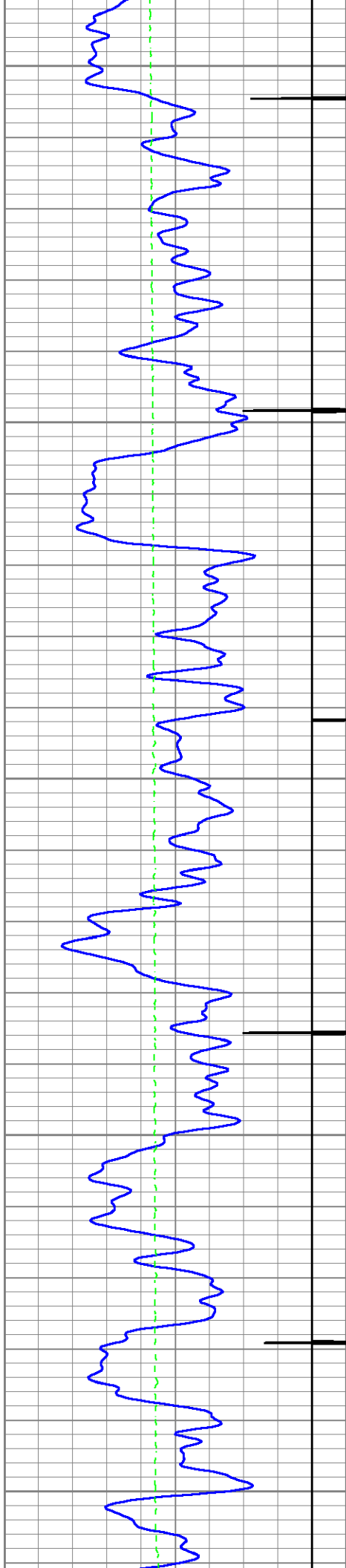
0.3 CNPOR (pu) -0.1

CNLSC	
0	(cps) 1500
CNSSC	
0	(cps) 7000



7400

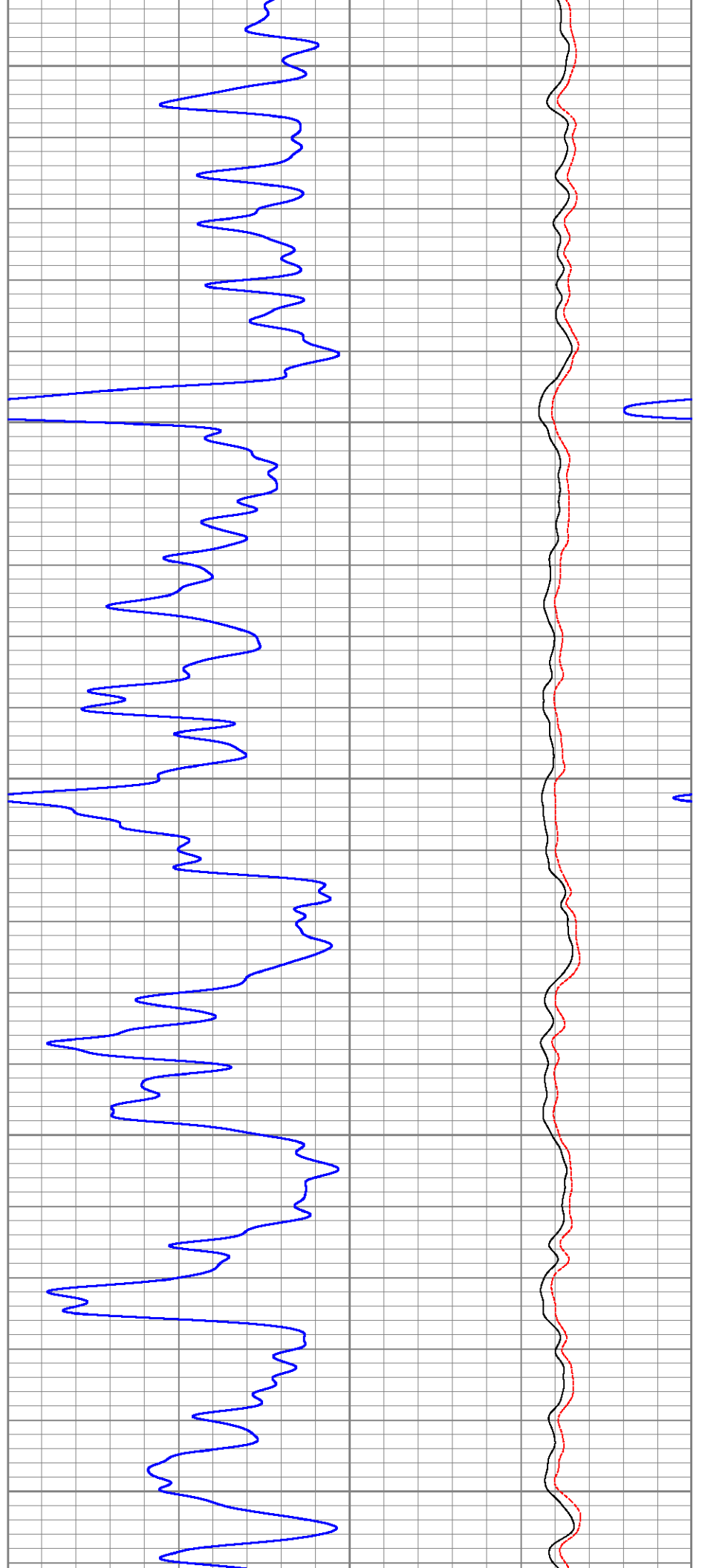


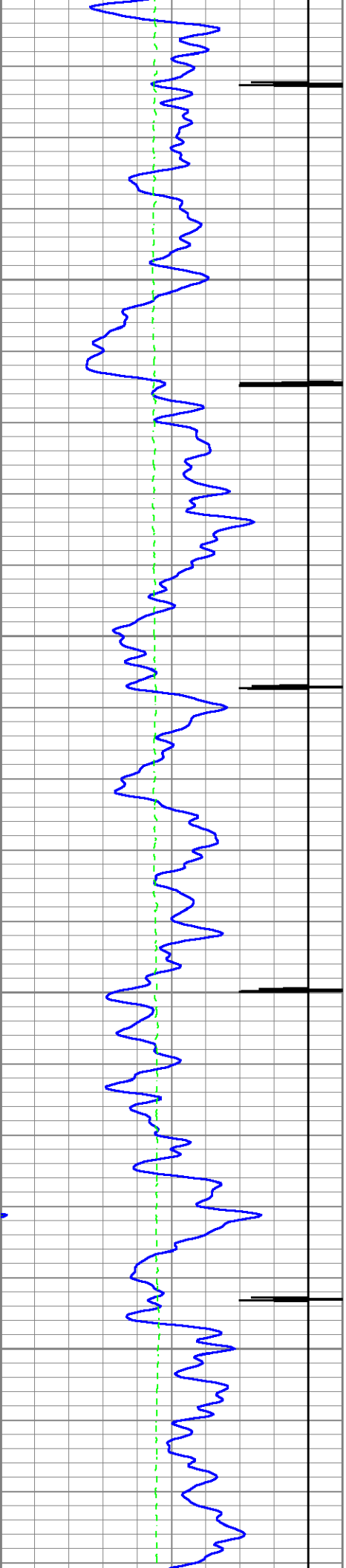


7500

7600

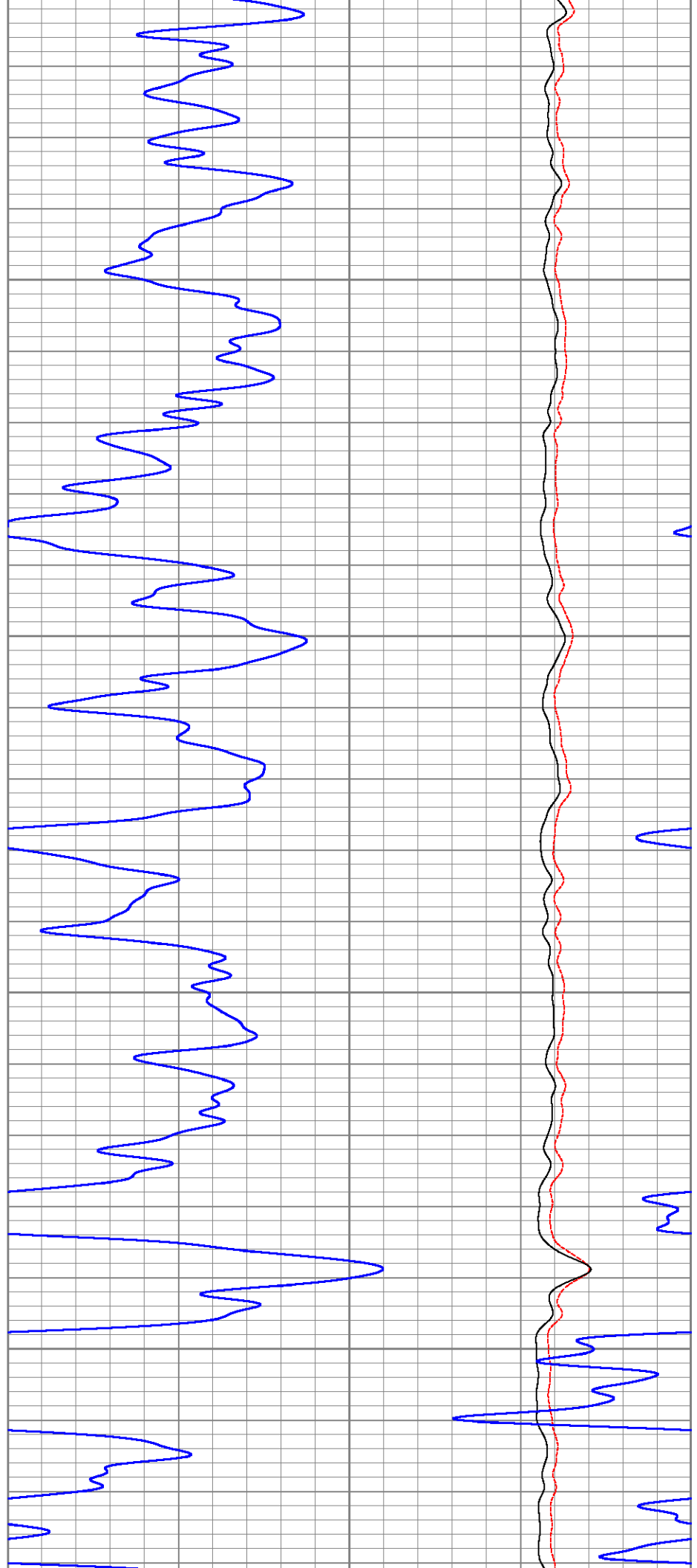
7700

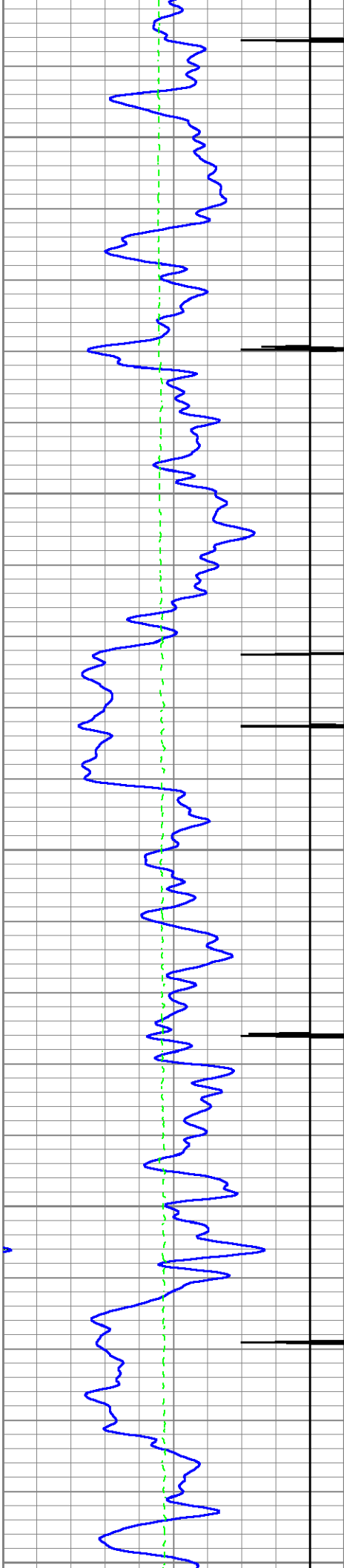




7800

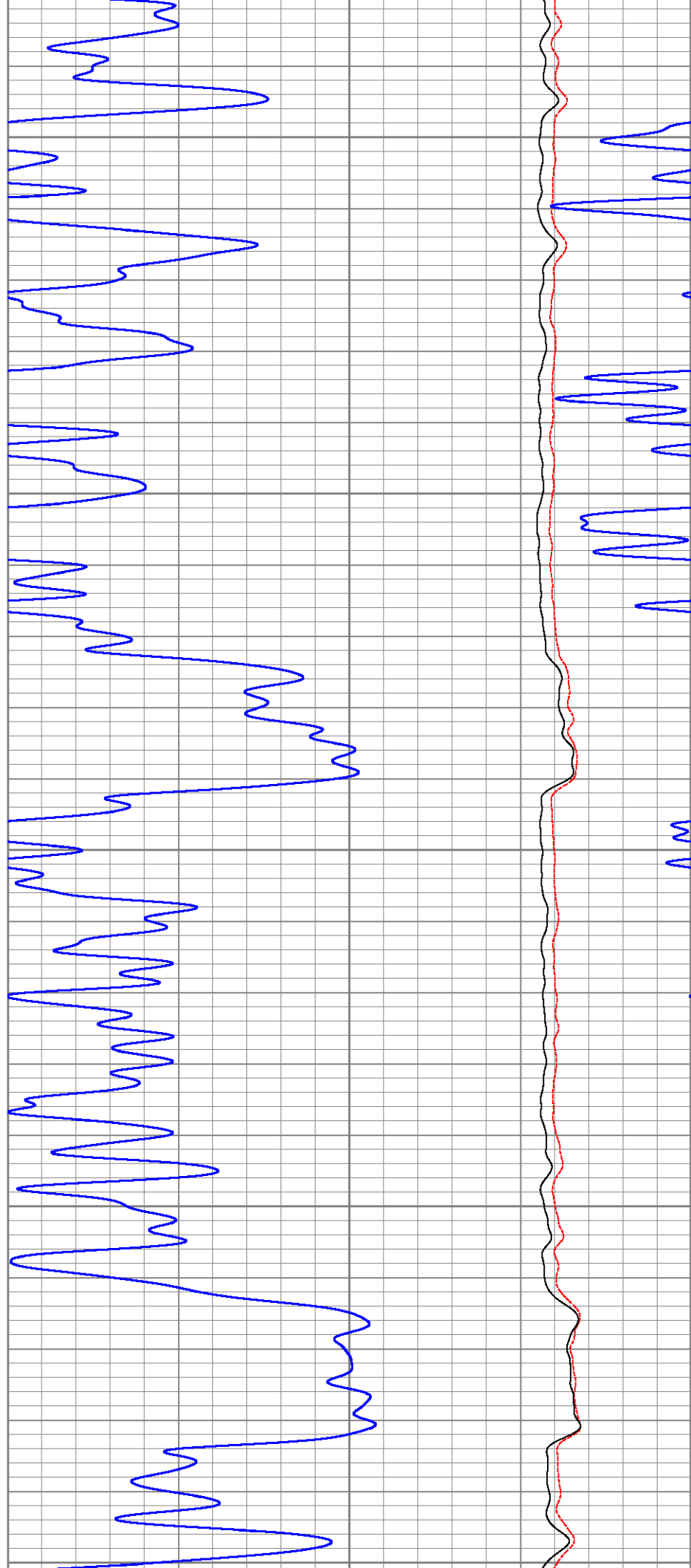
7900

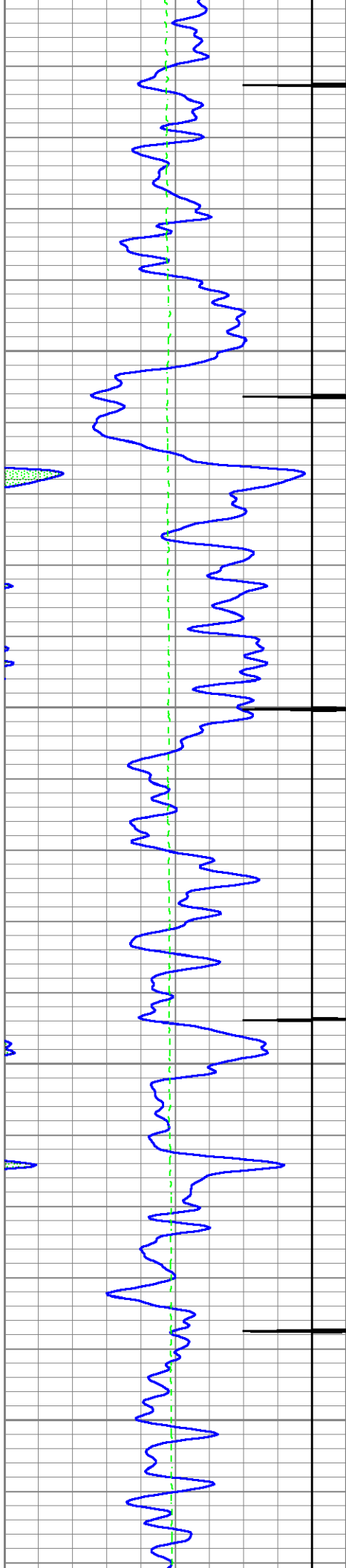




8000

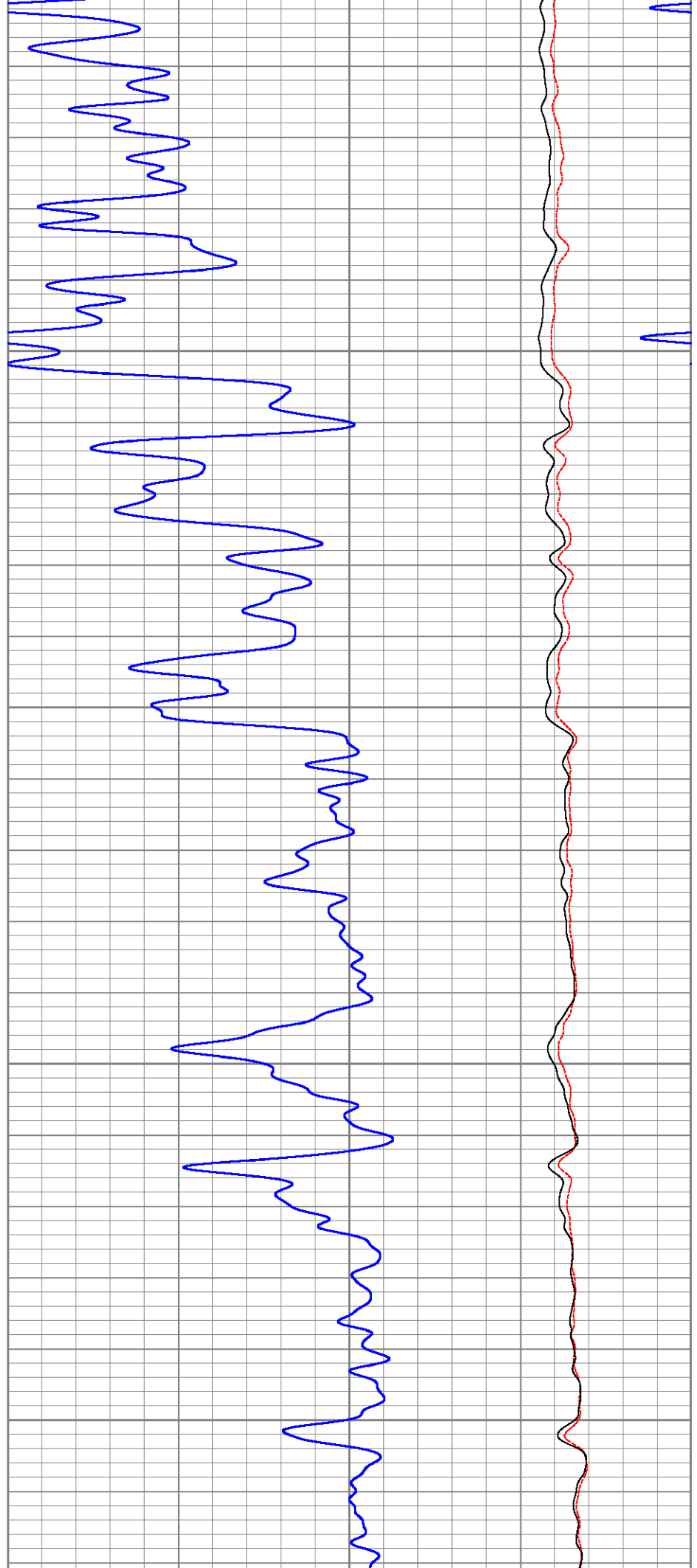
8100

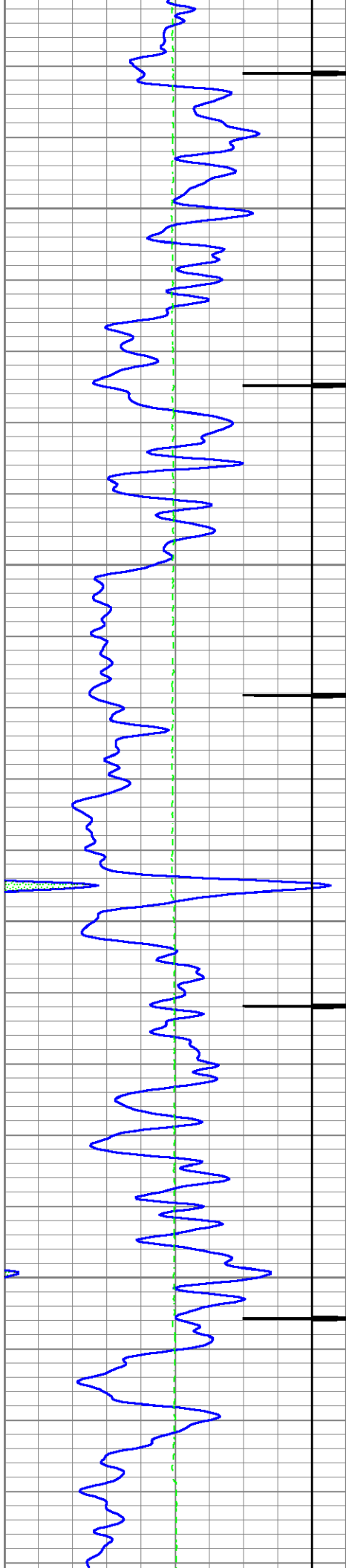




8200

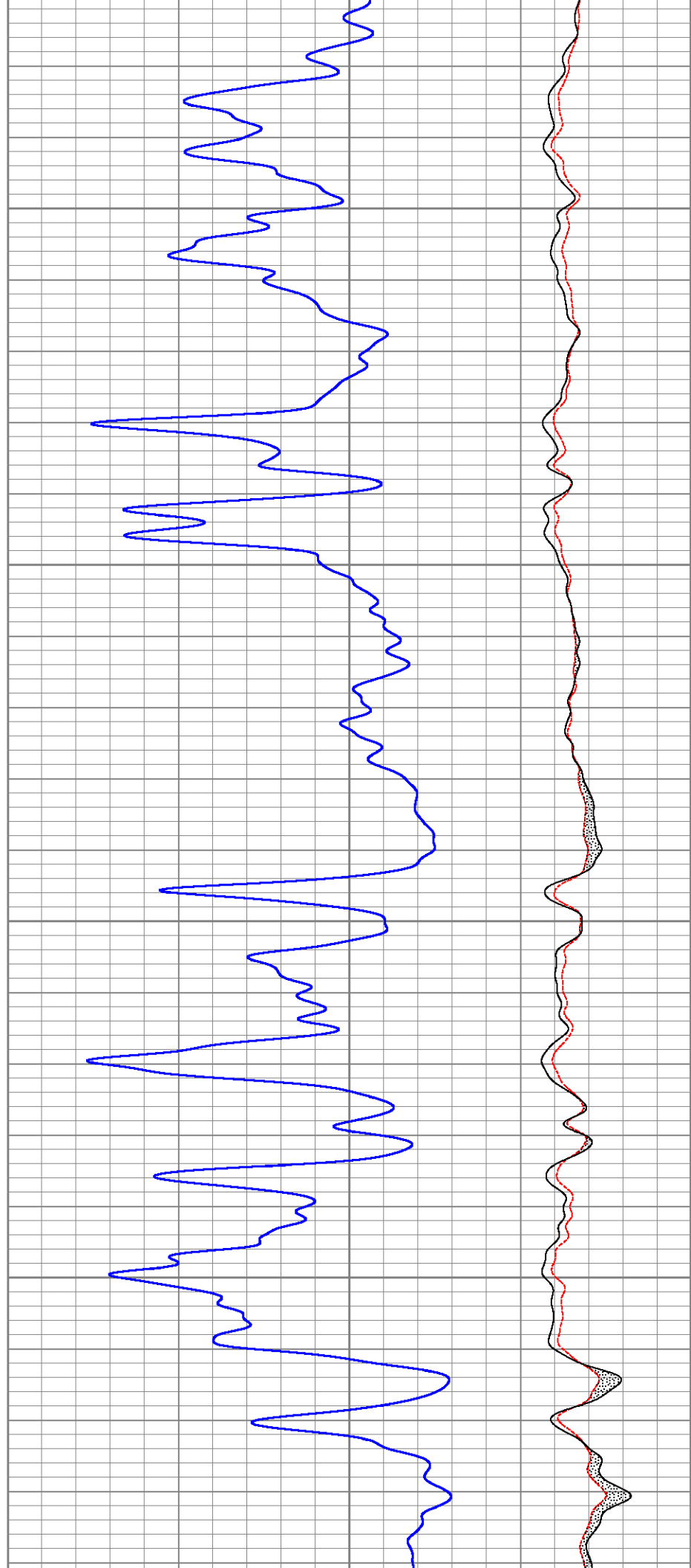
8300

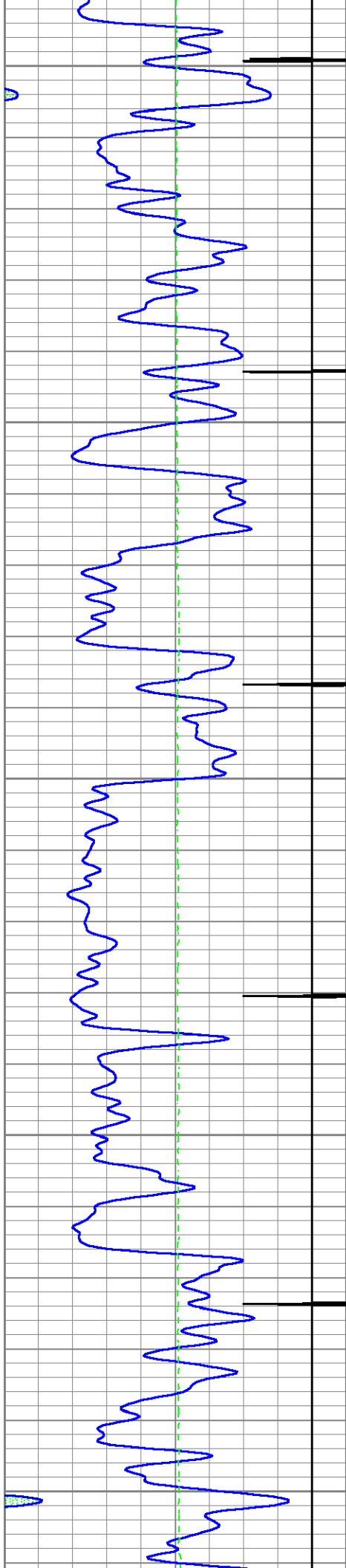




8400

8500

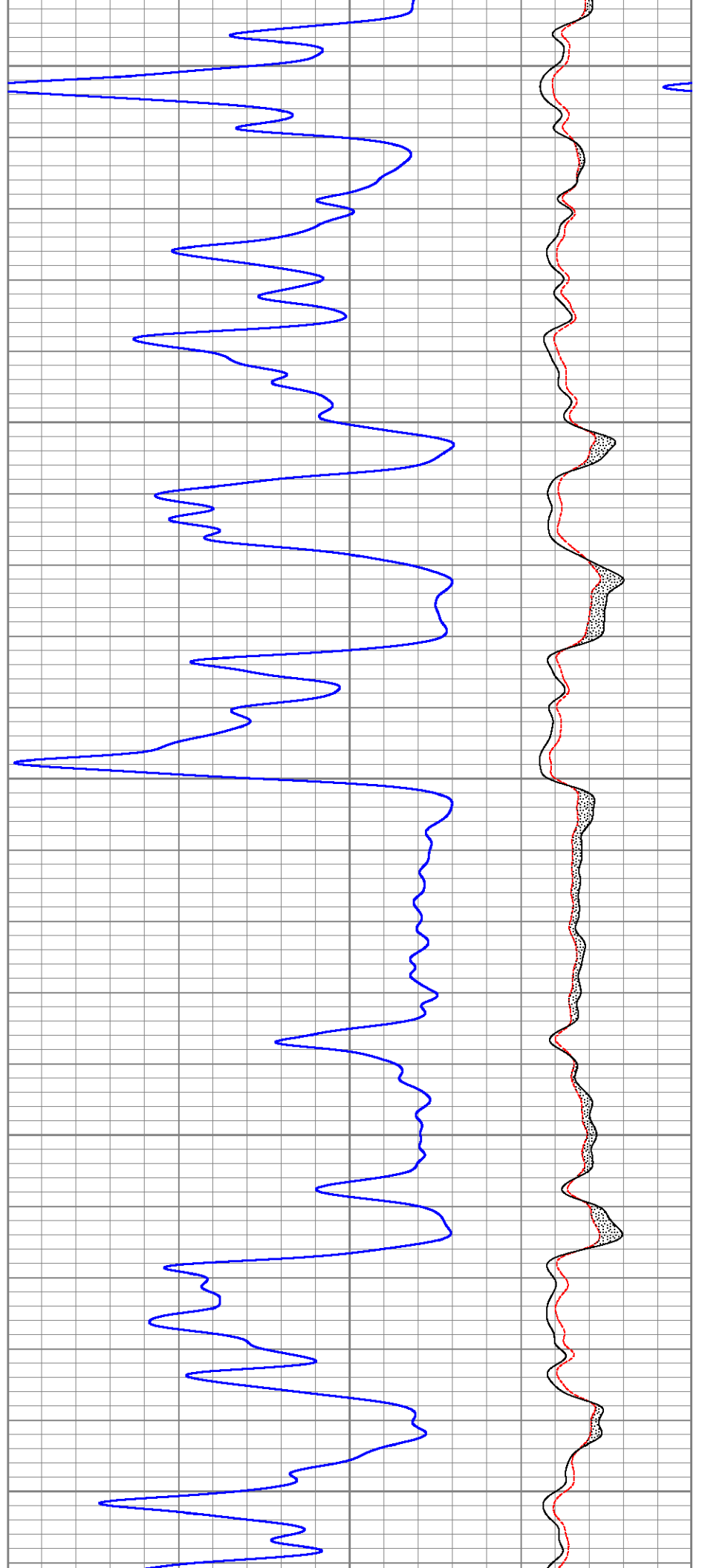


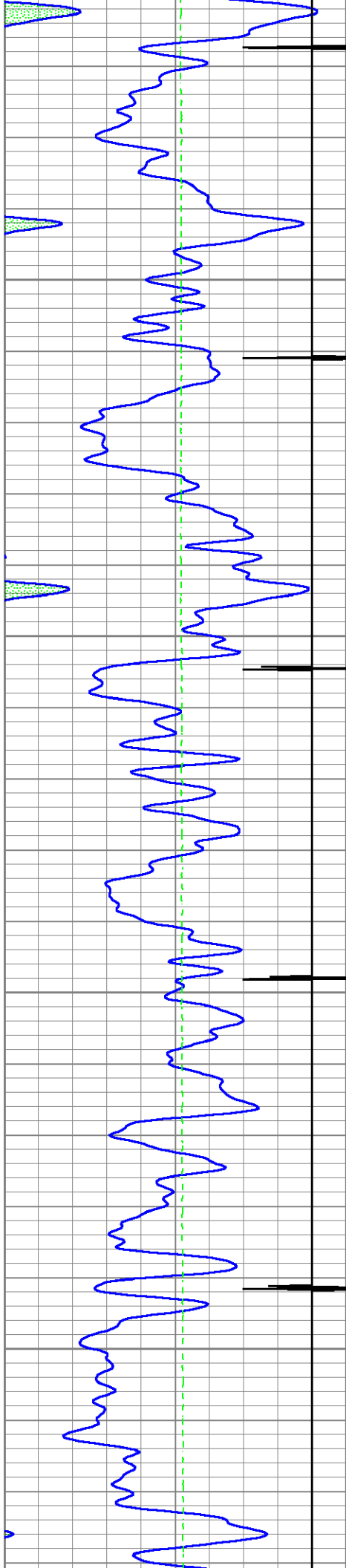


8600

8700

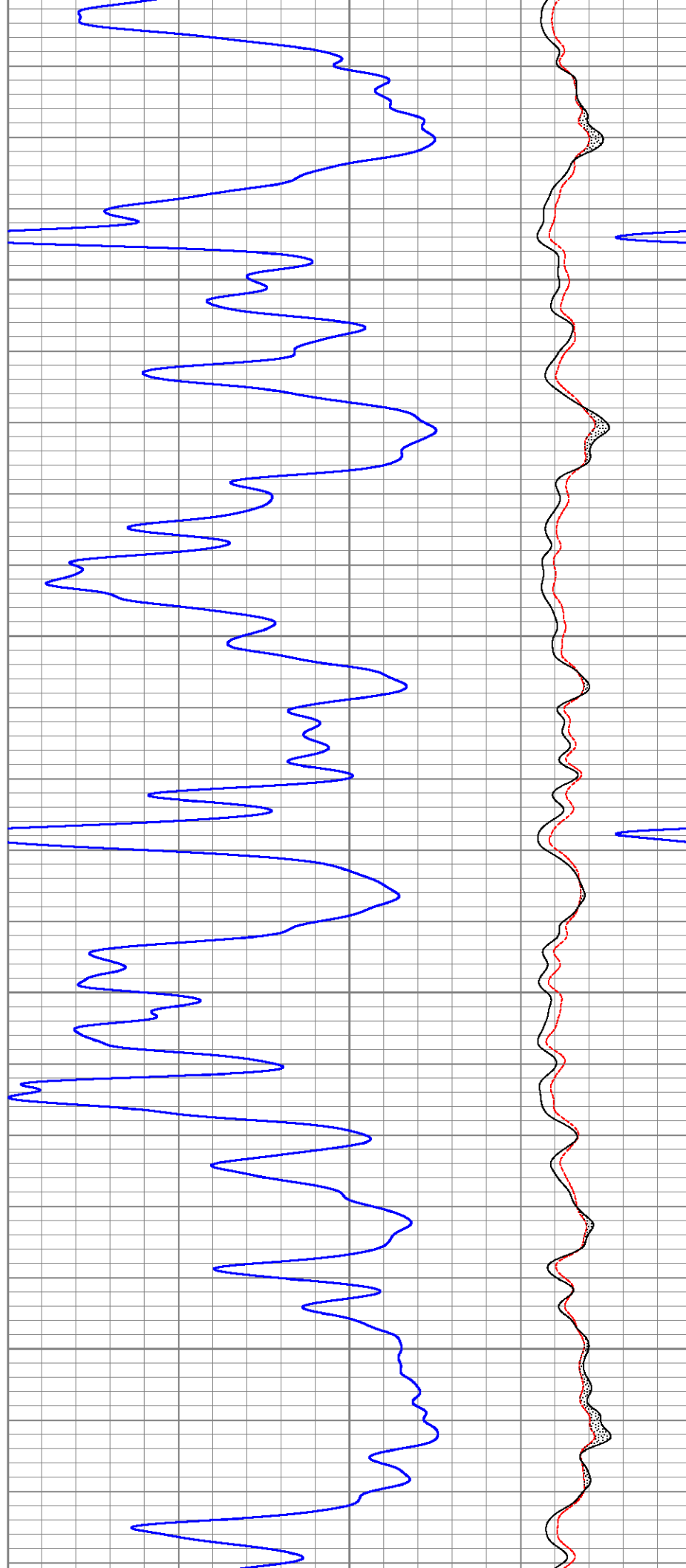
8800

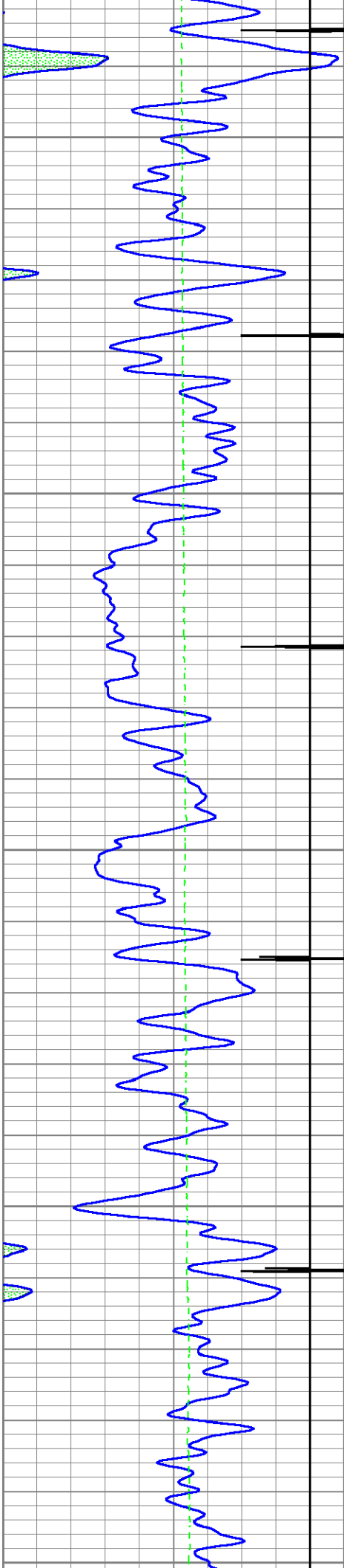




8900

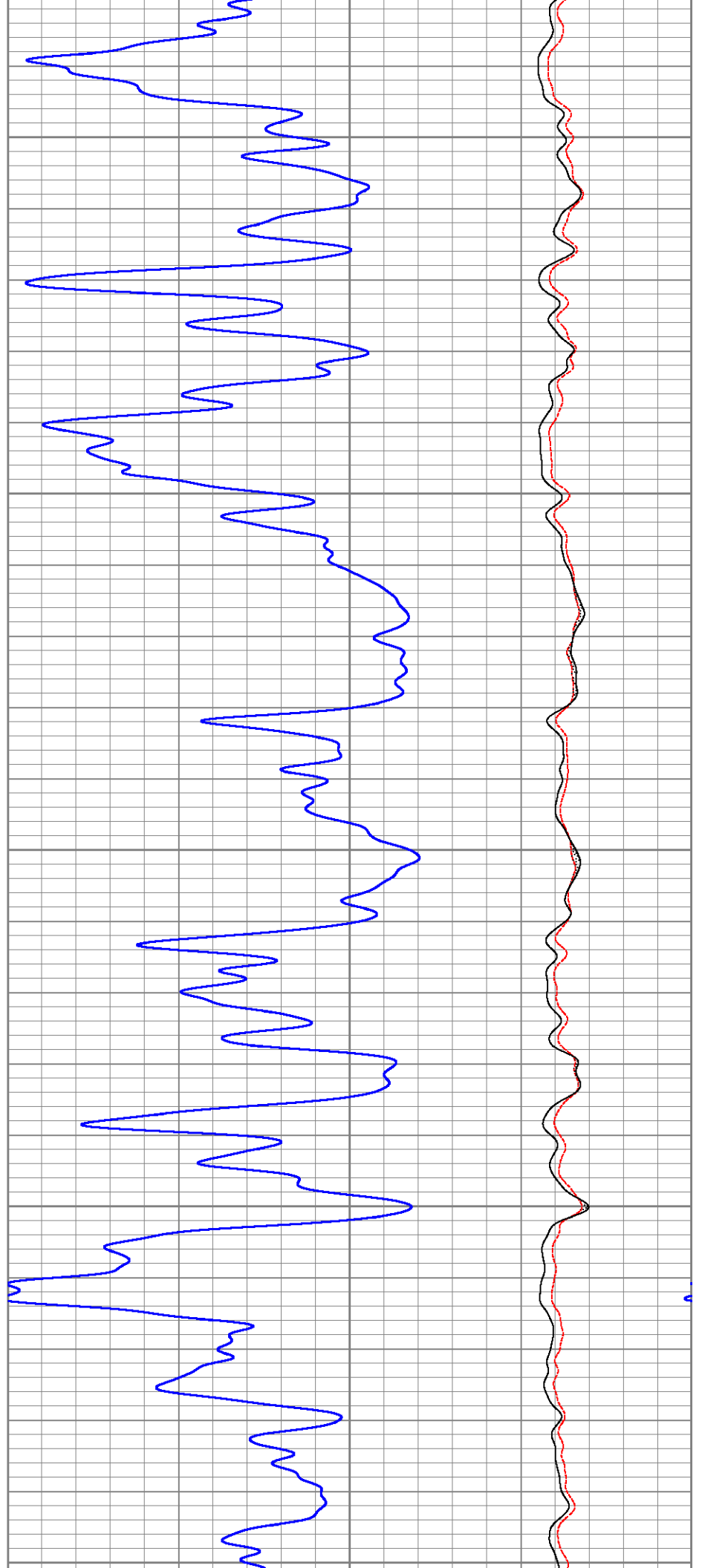
9000

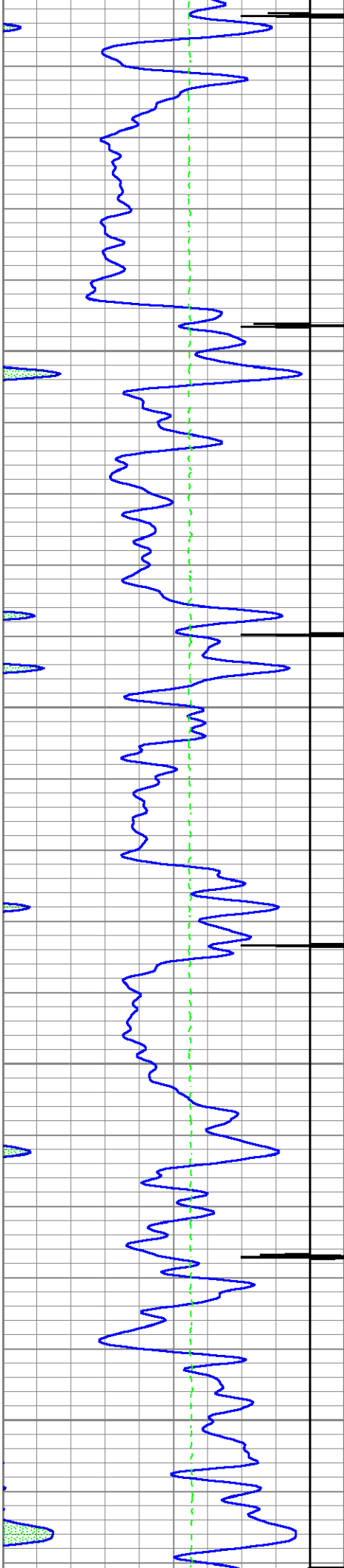




9100

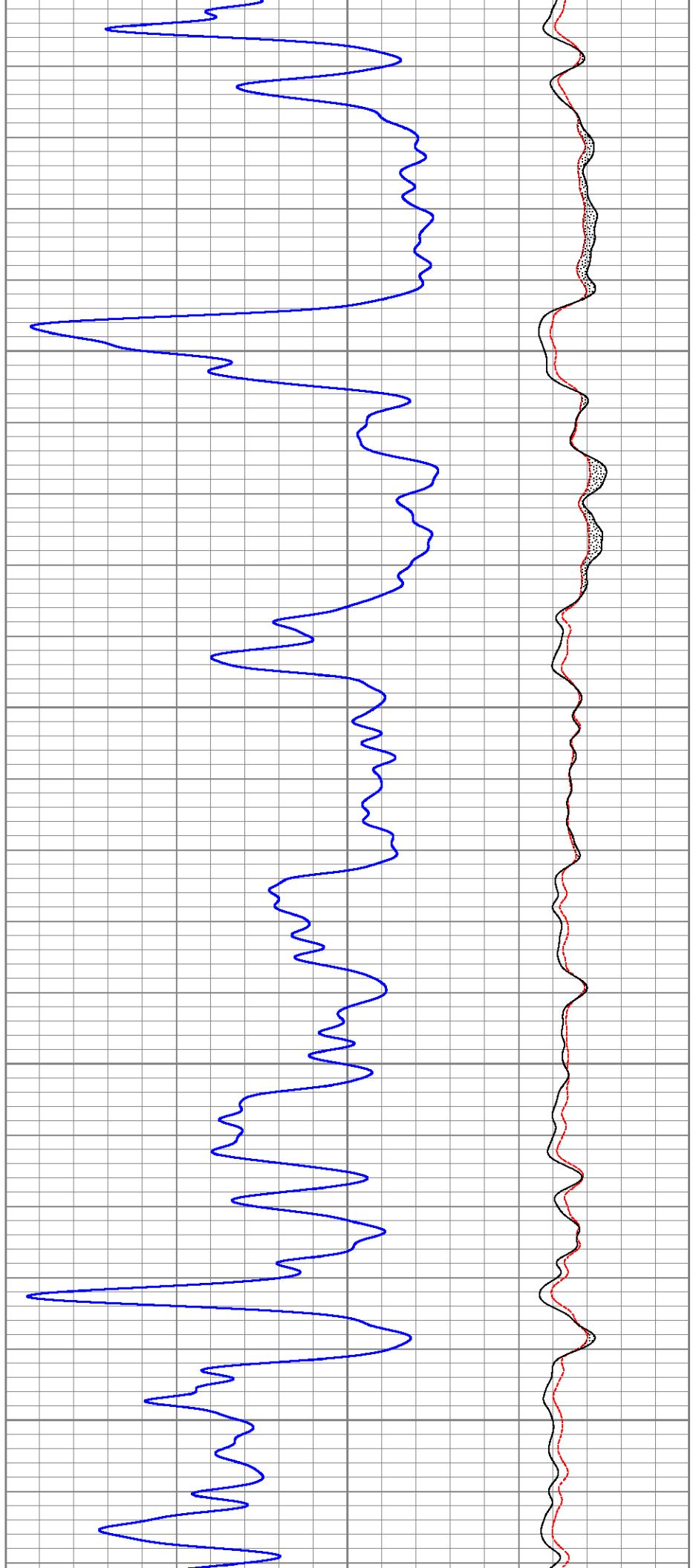
9200

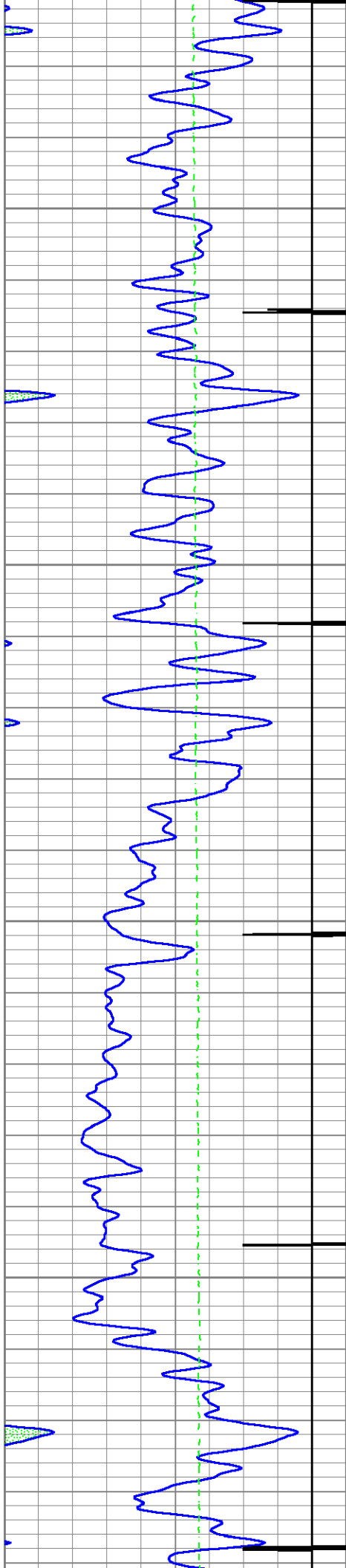




9300

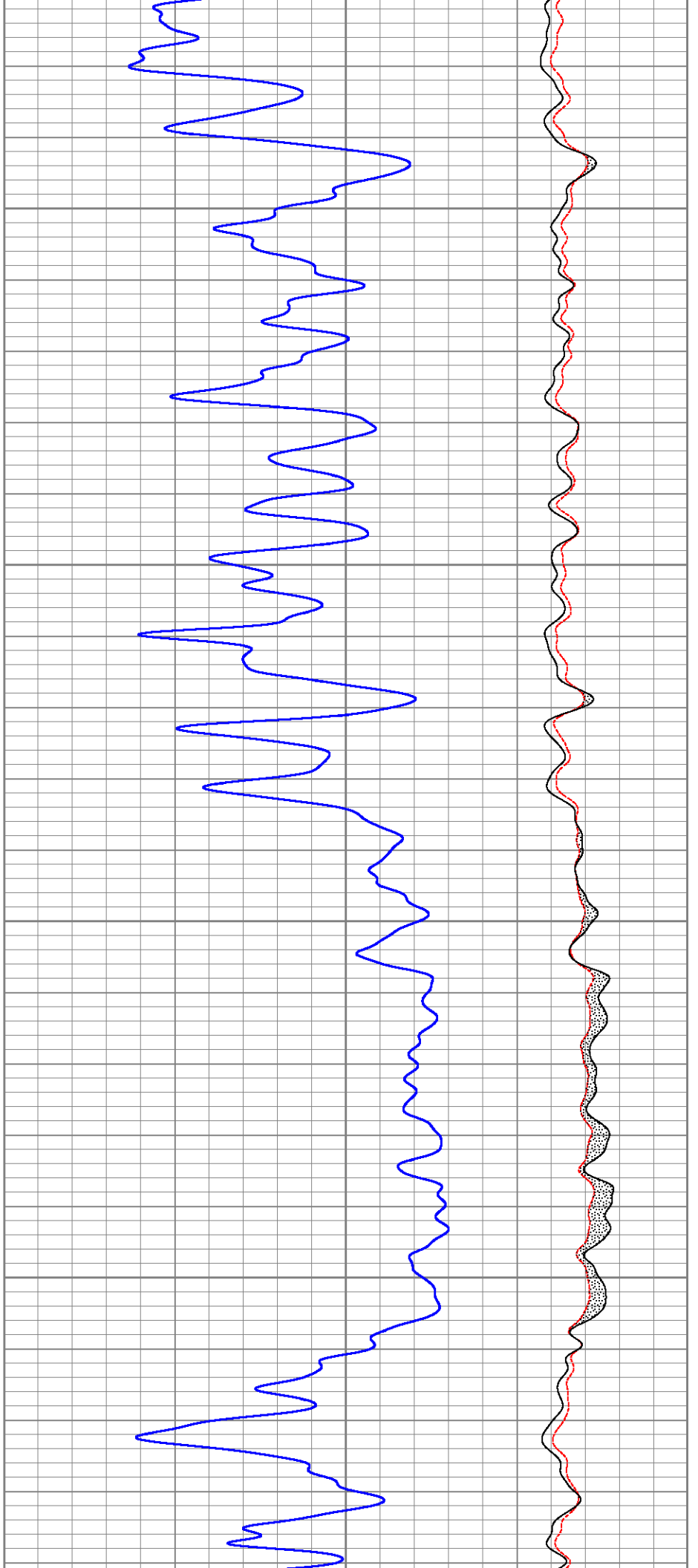
9400

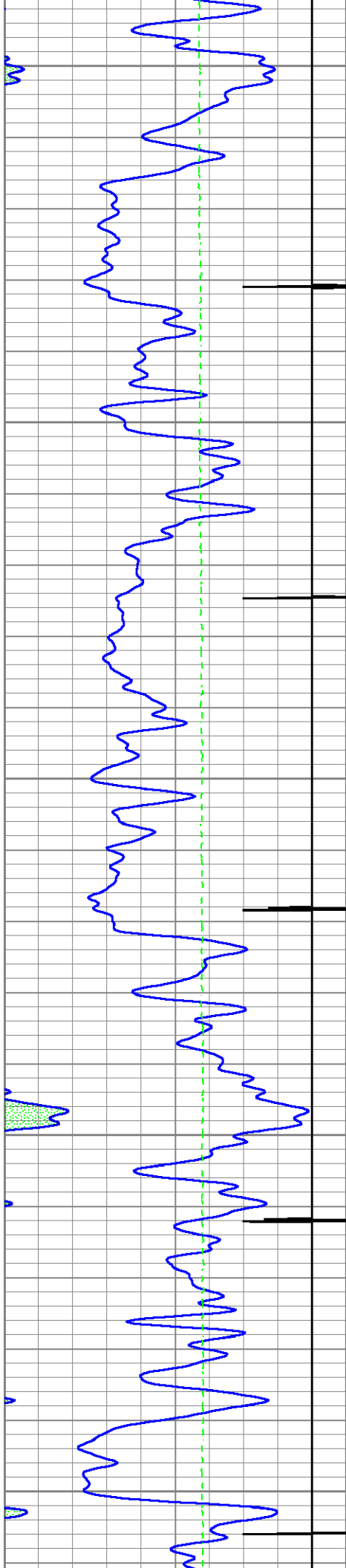




9500

9600

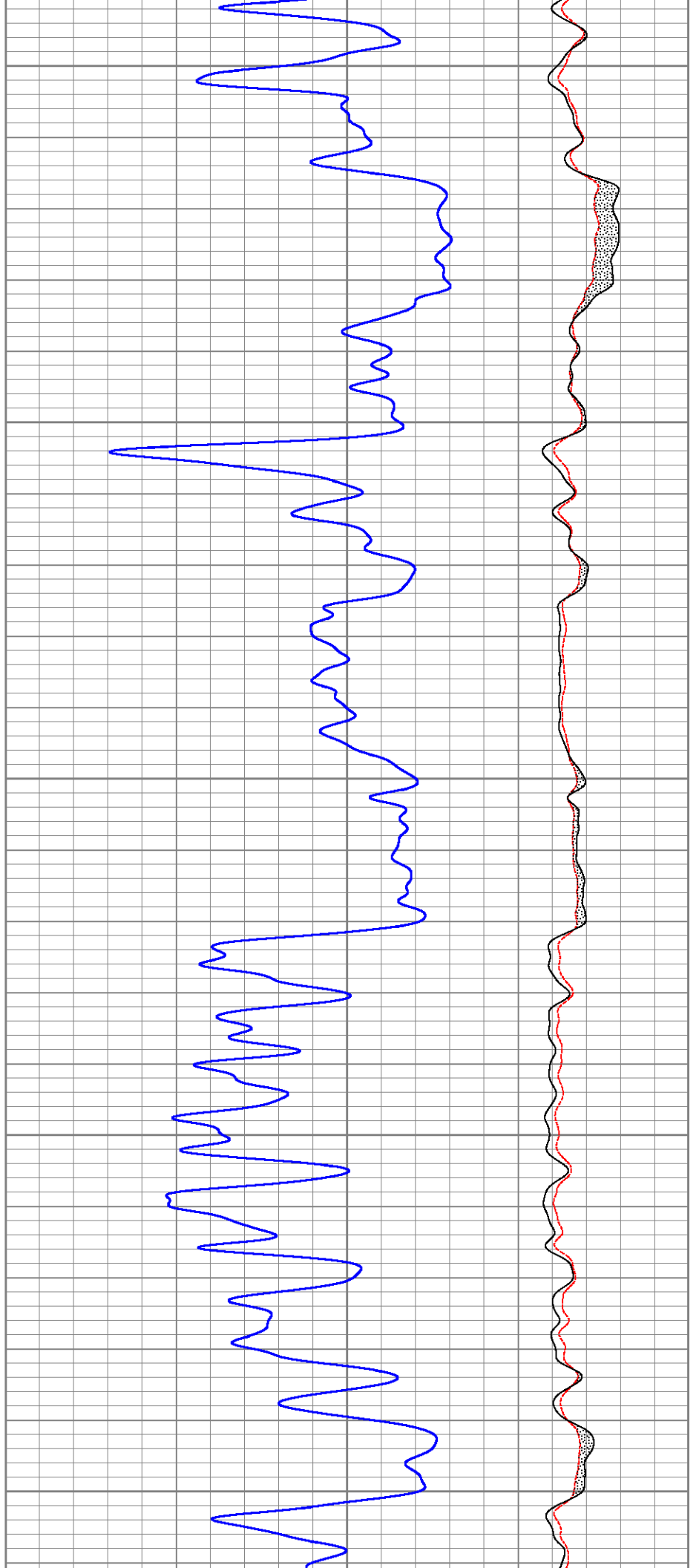


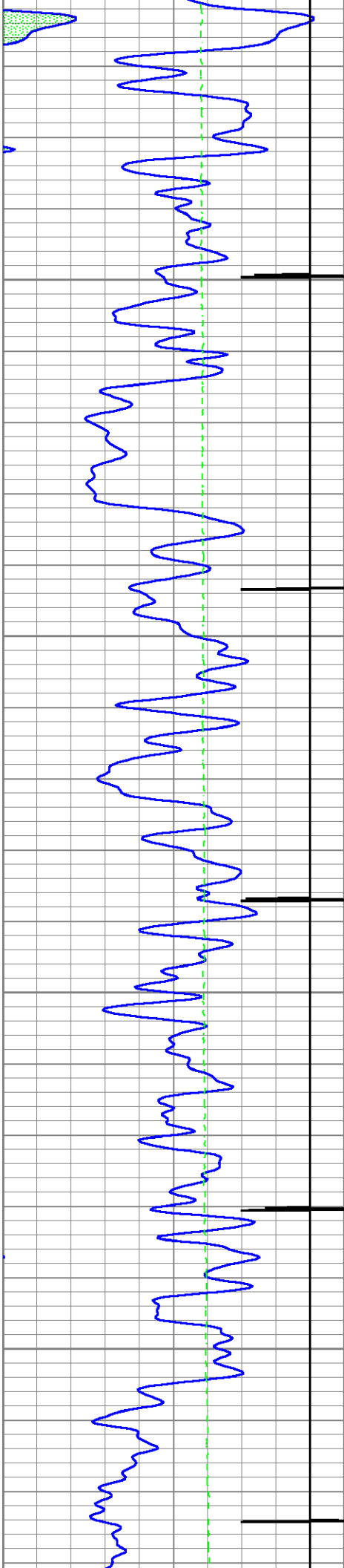


9700

9800

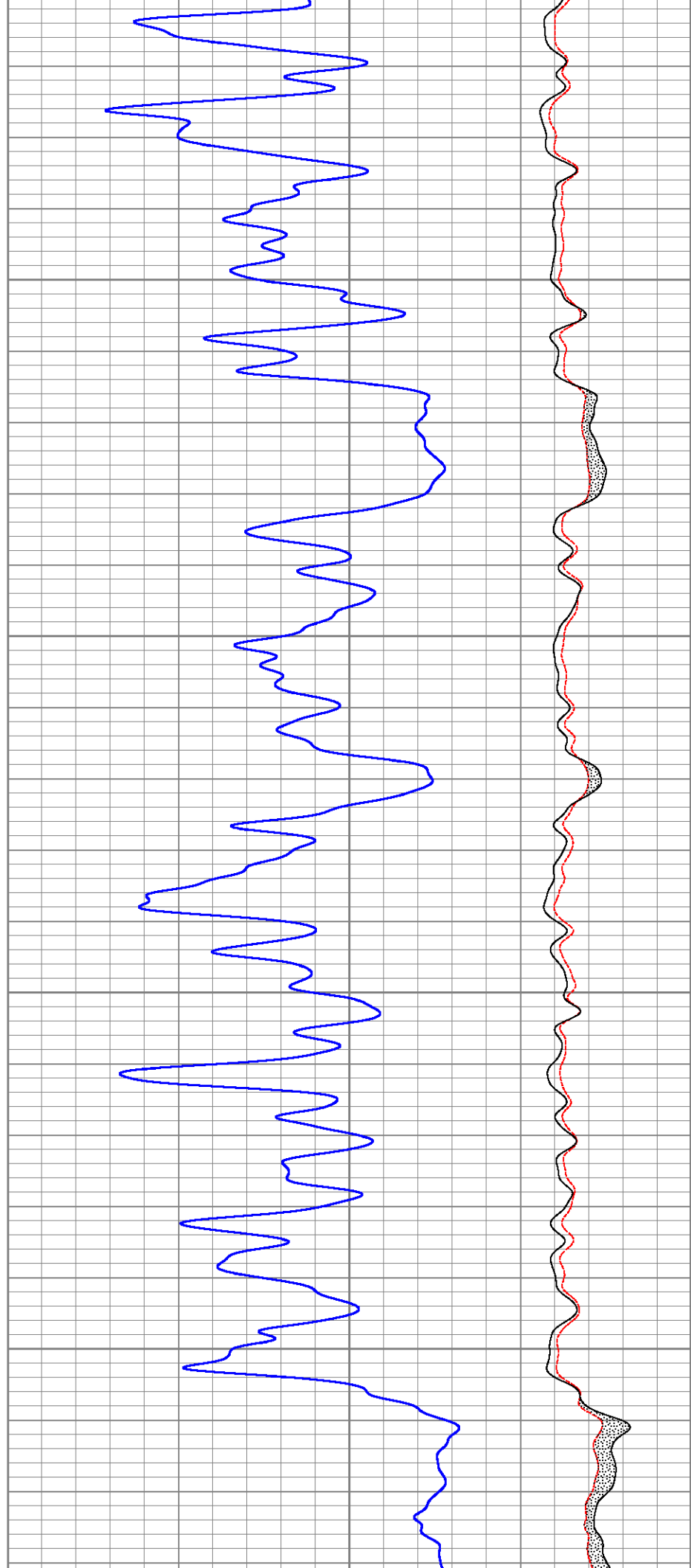
9900

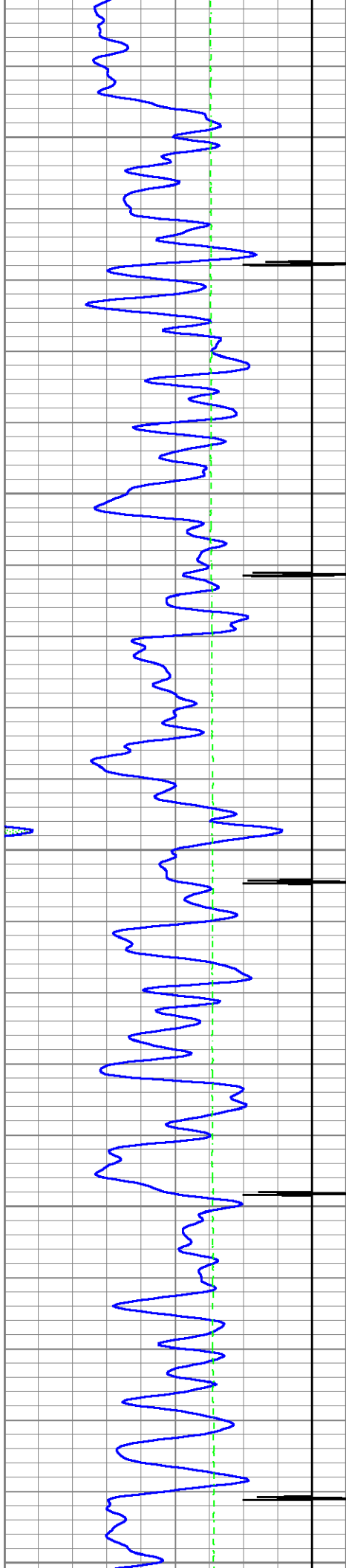




10000

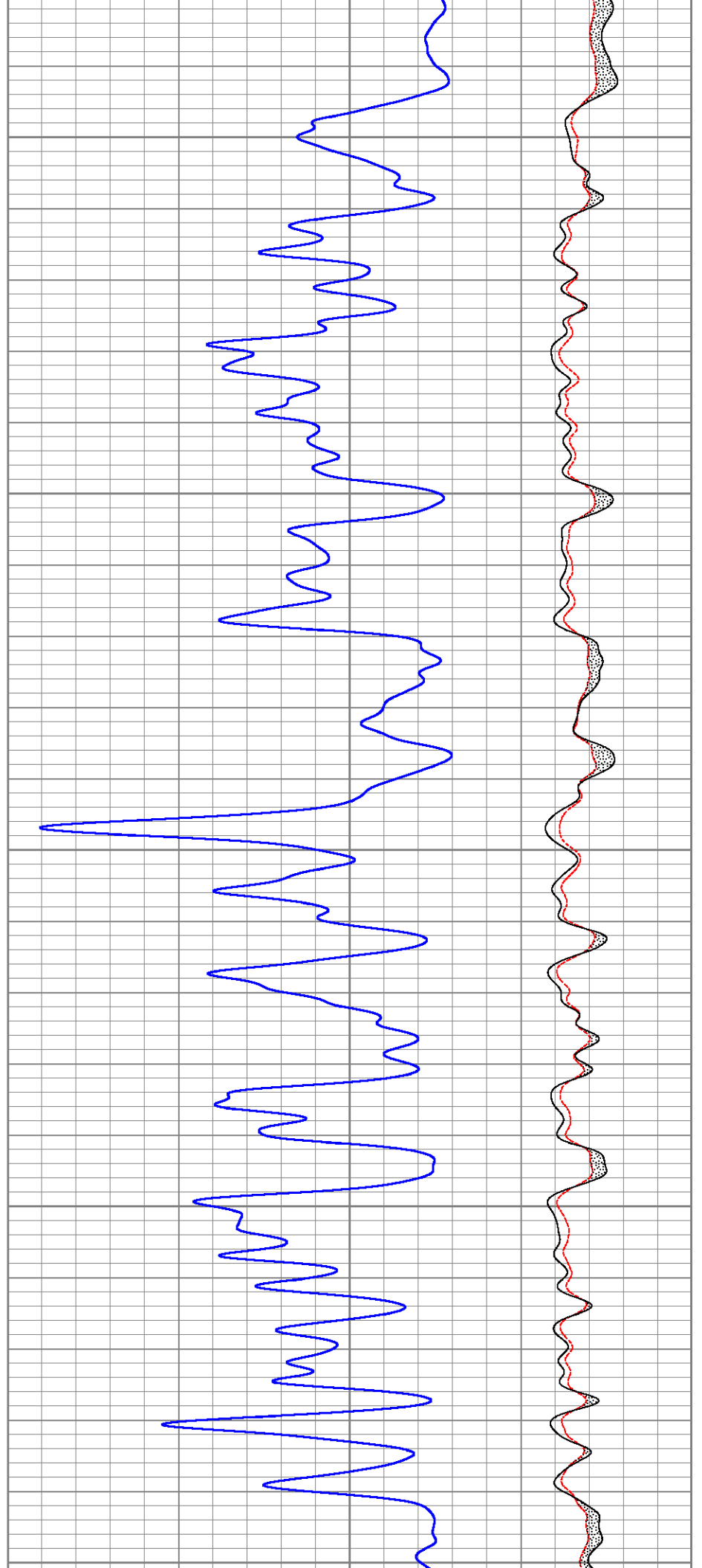
10100

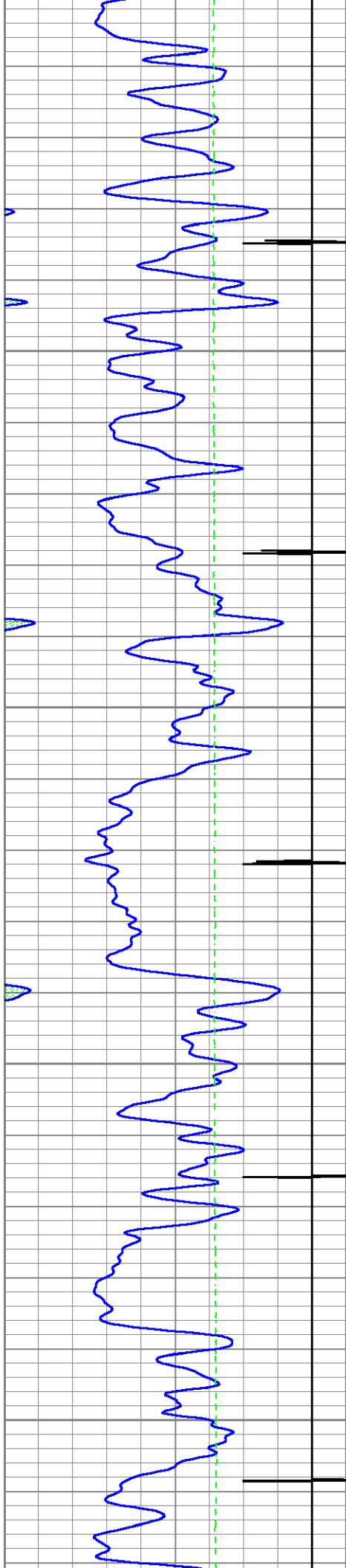




10200

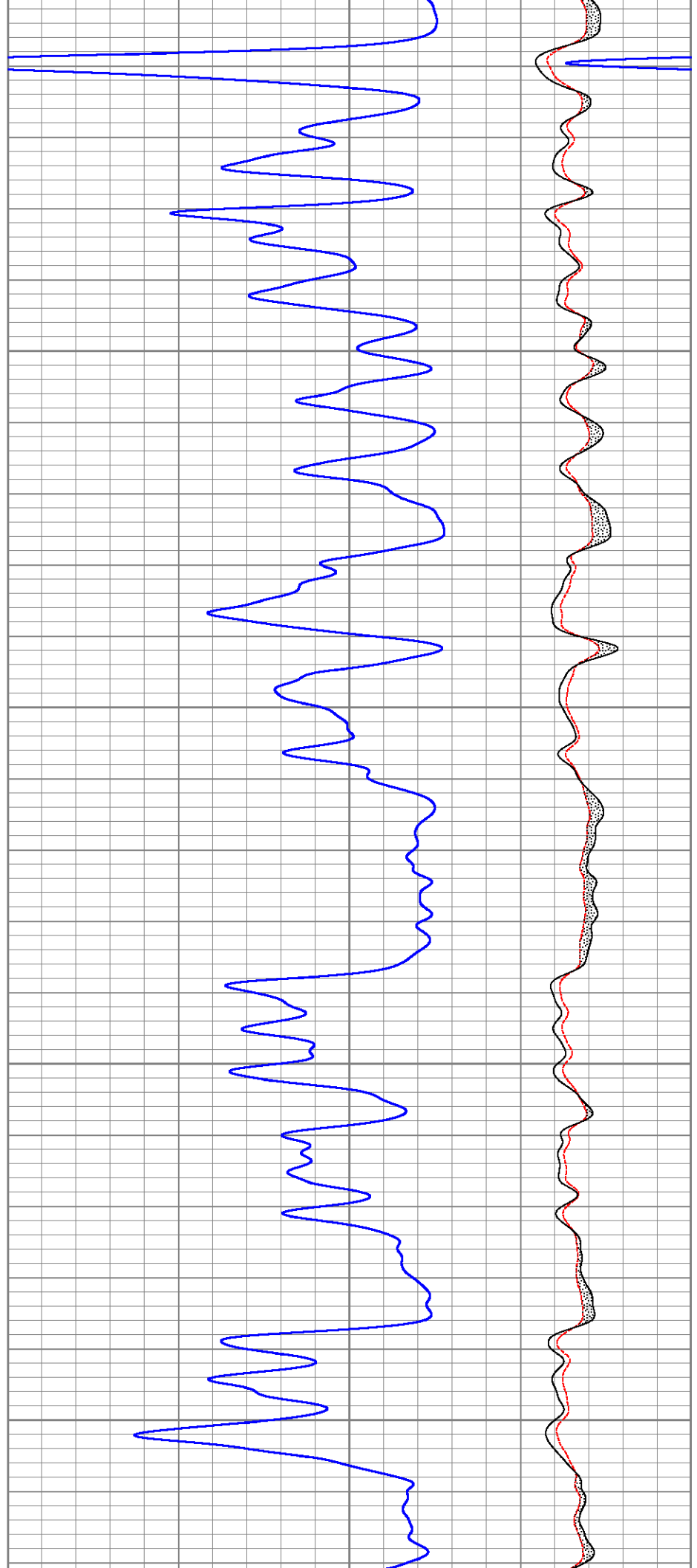
10300

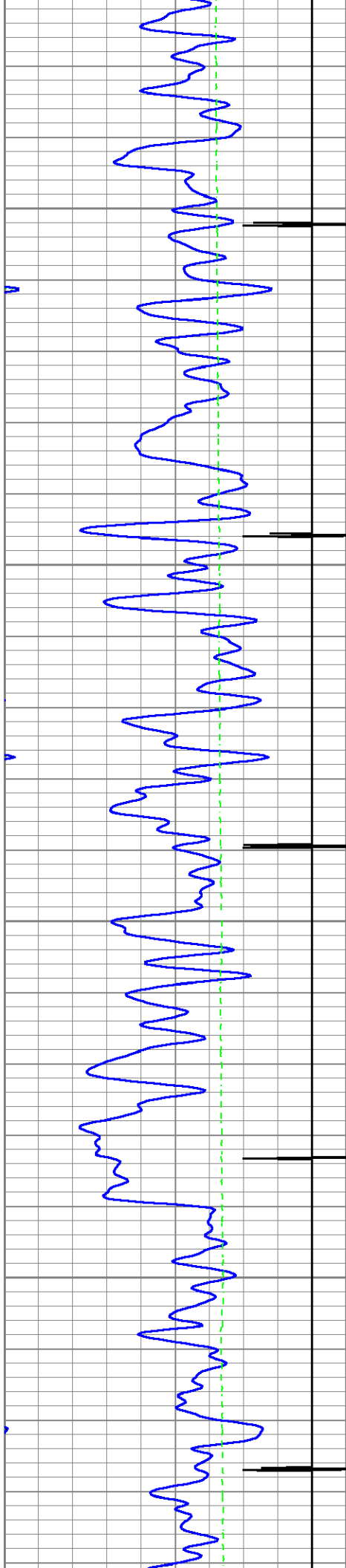




10400

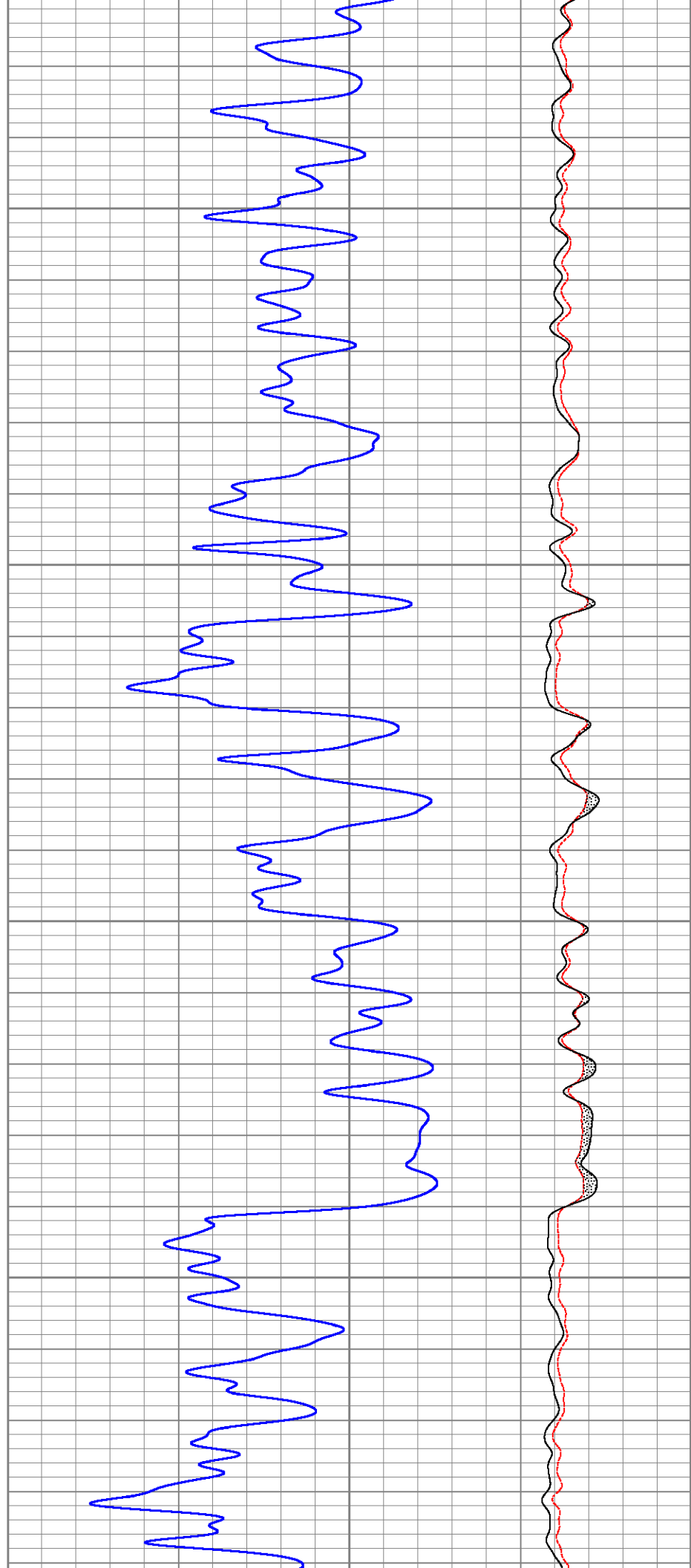
10500

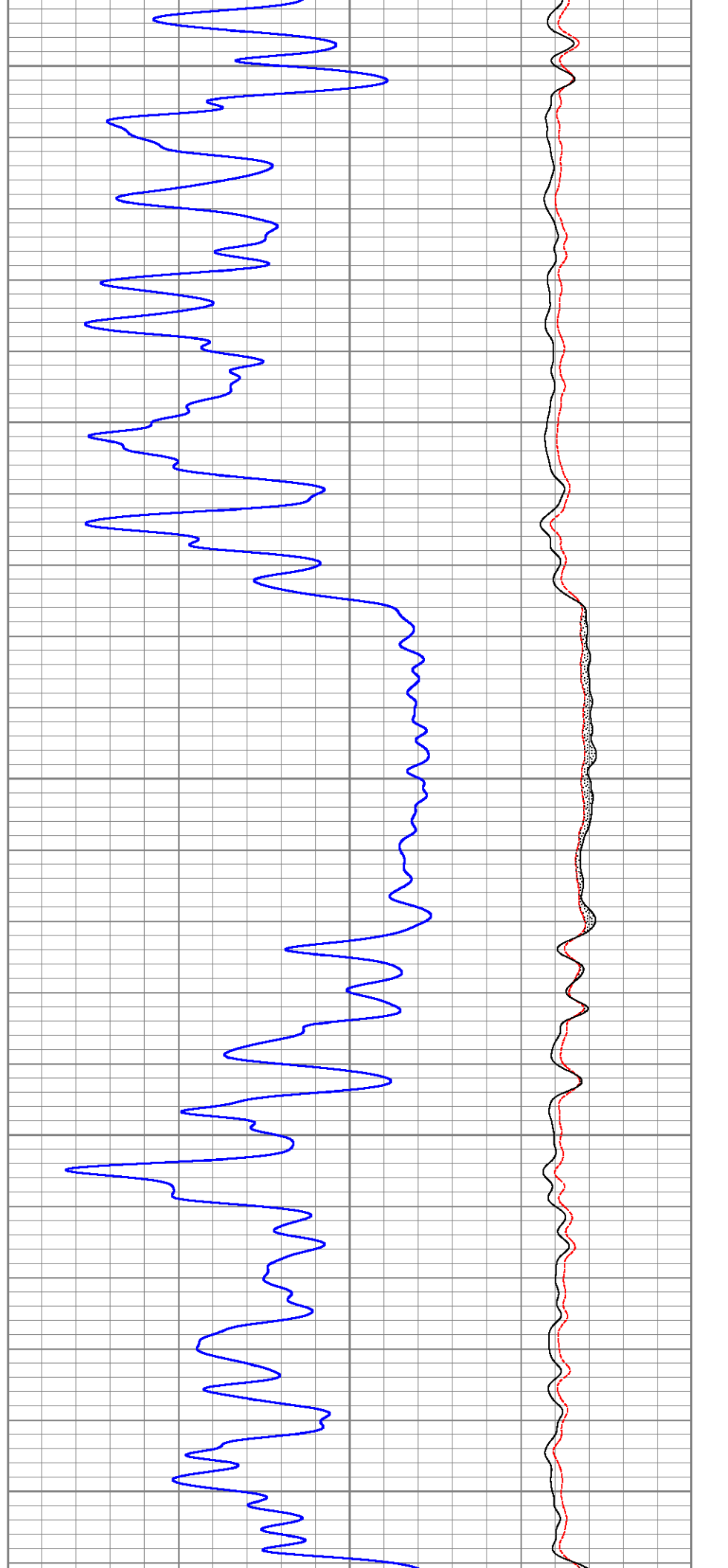
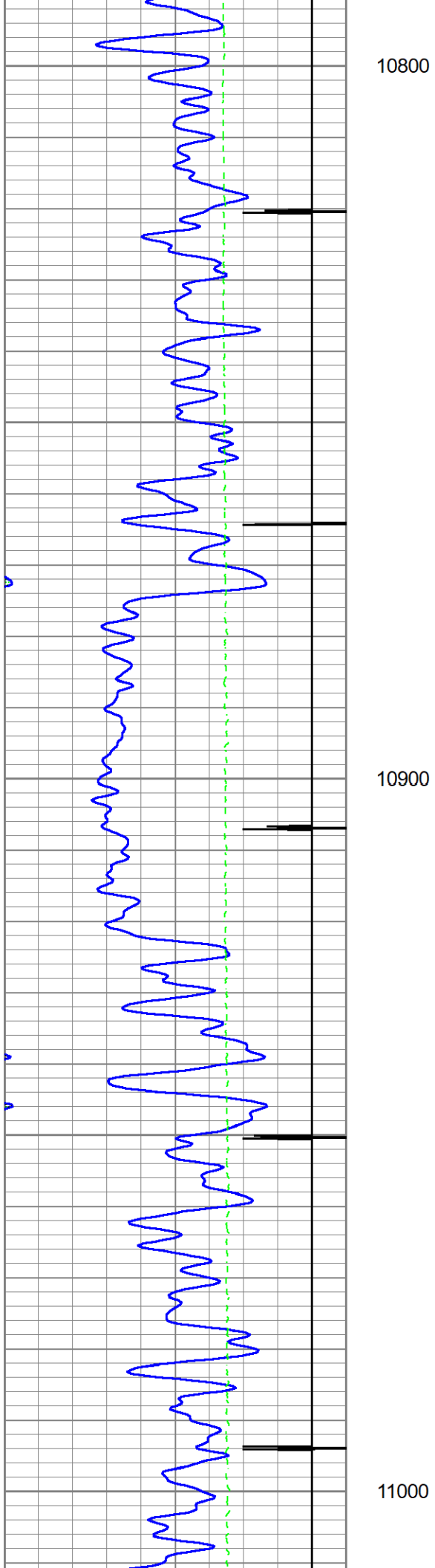


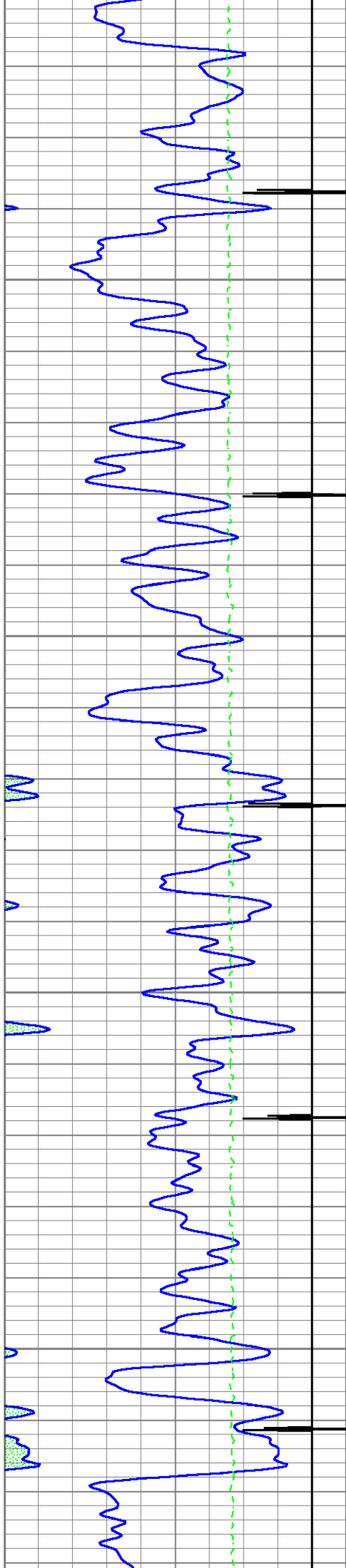


10600

10700

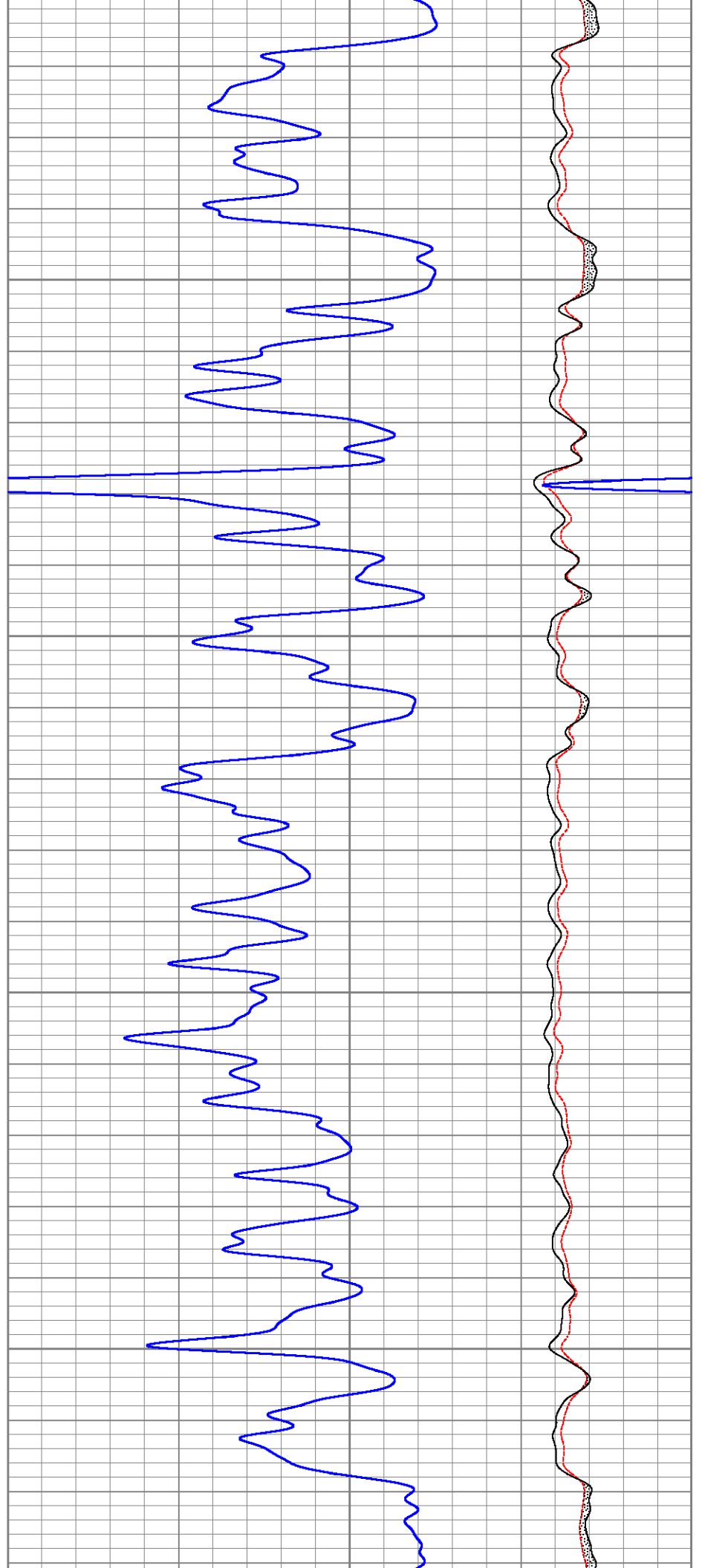


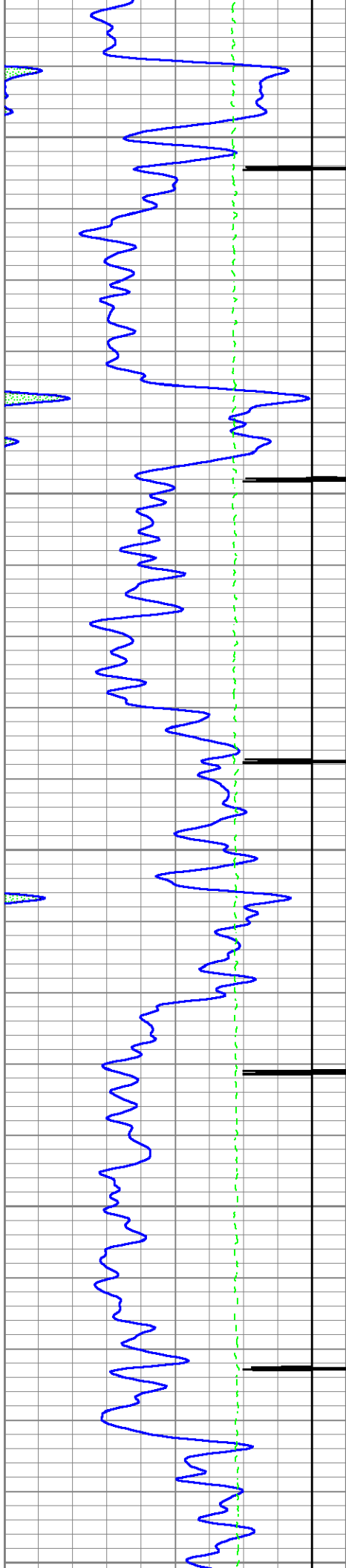




11100

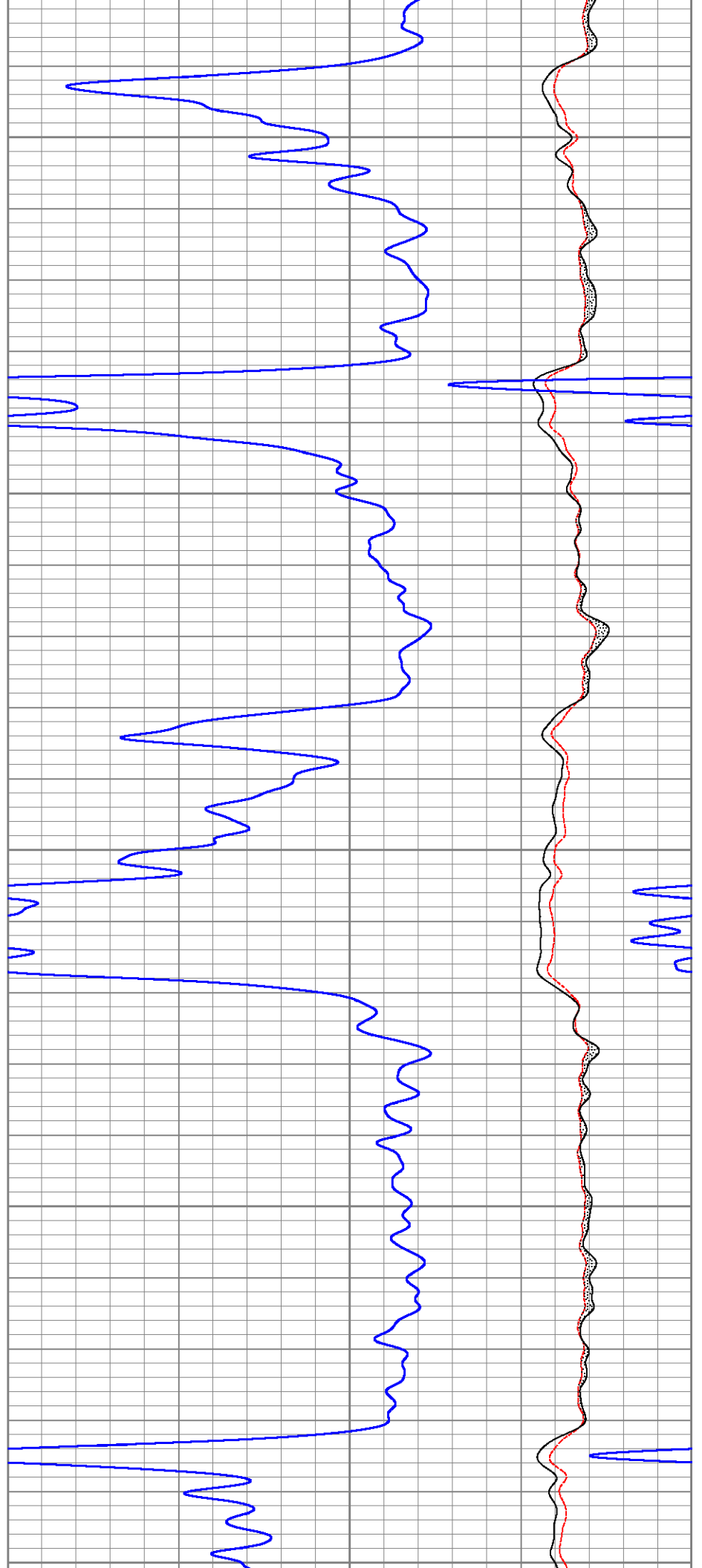
11200

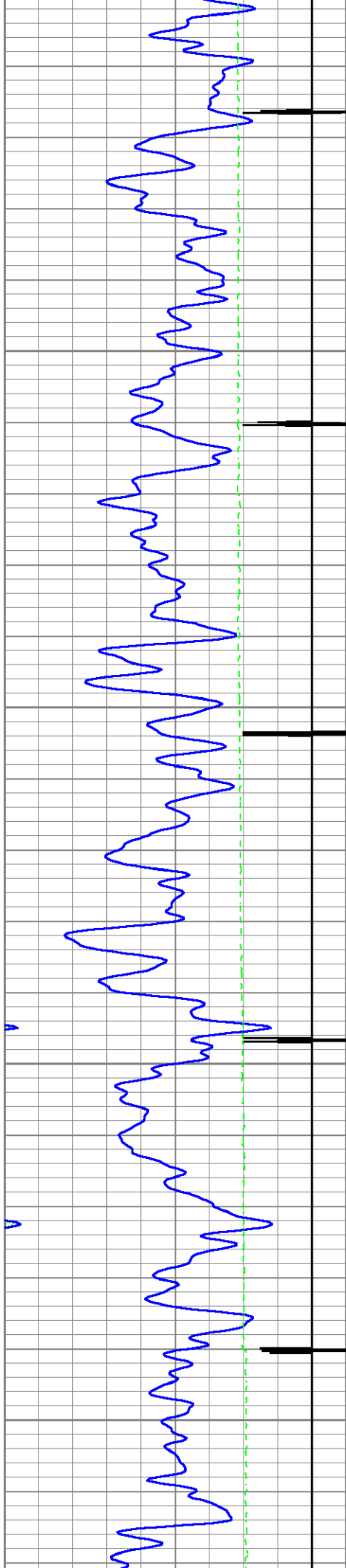




11300

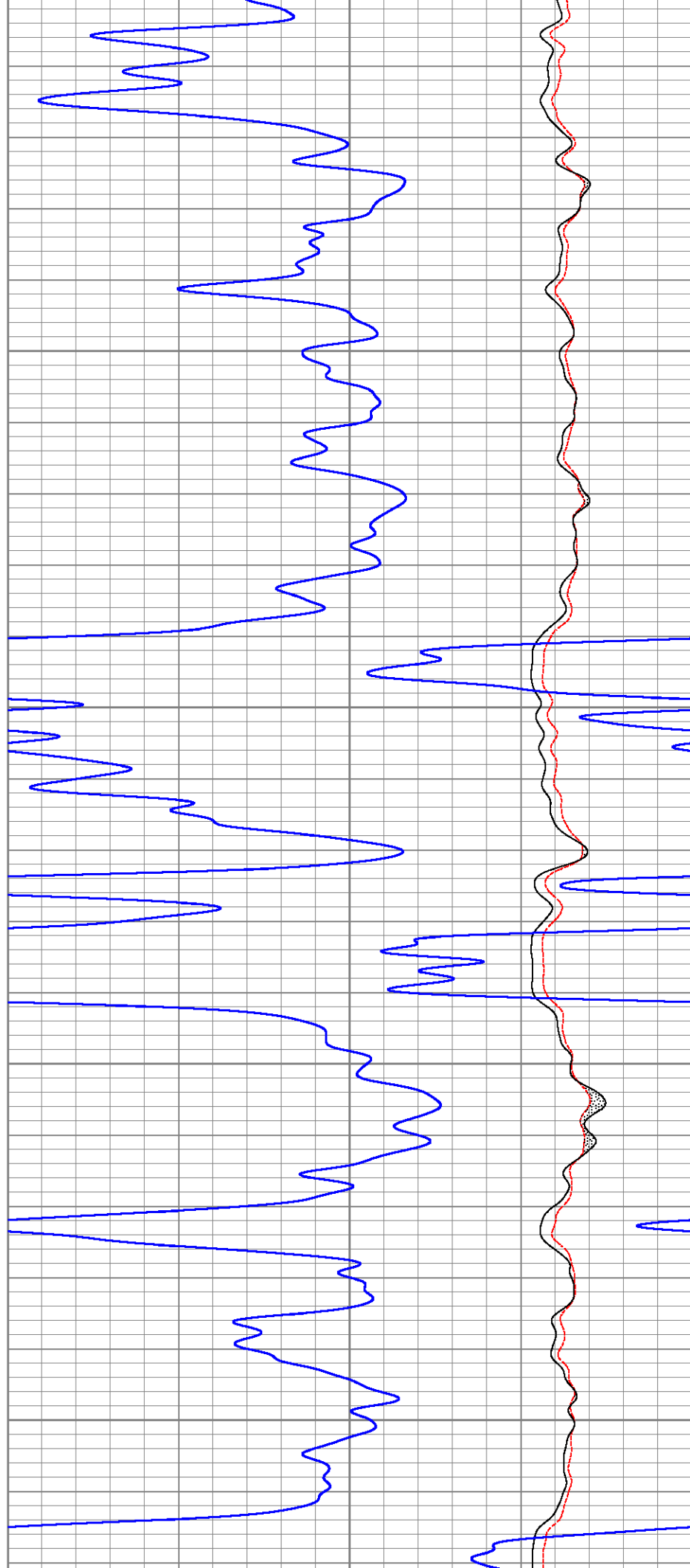
11400

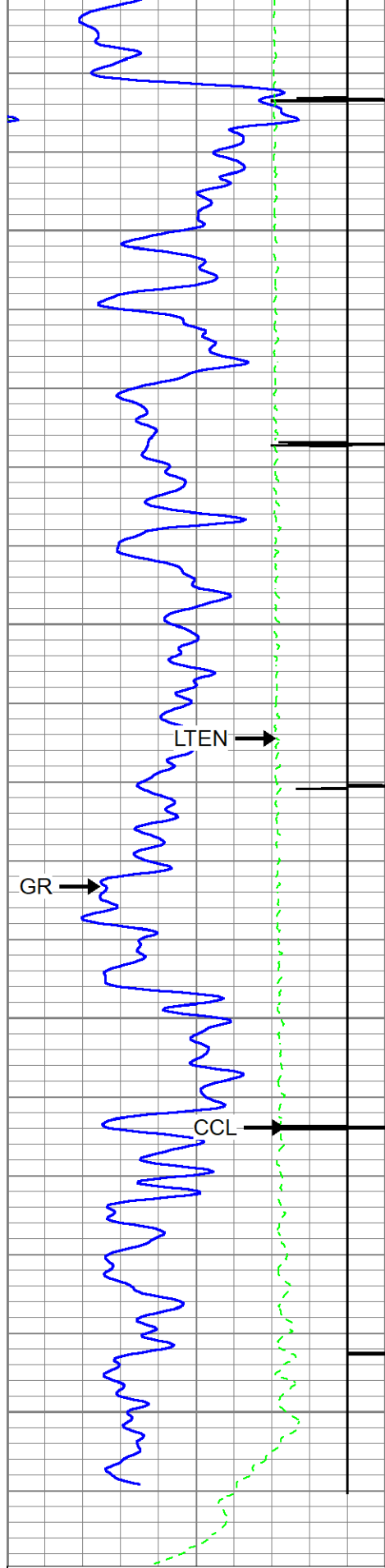




11500

11600





11700

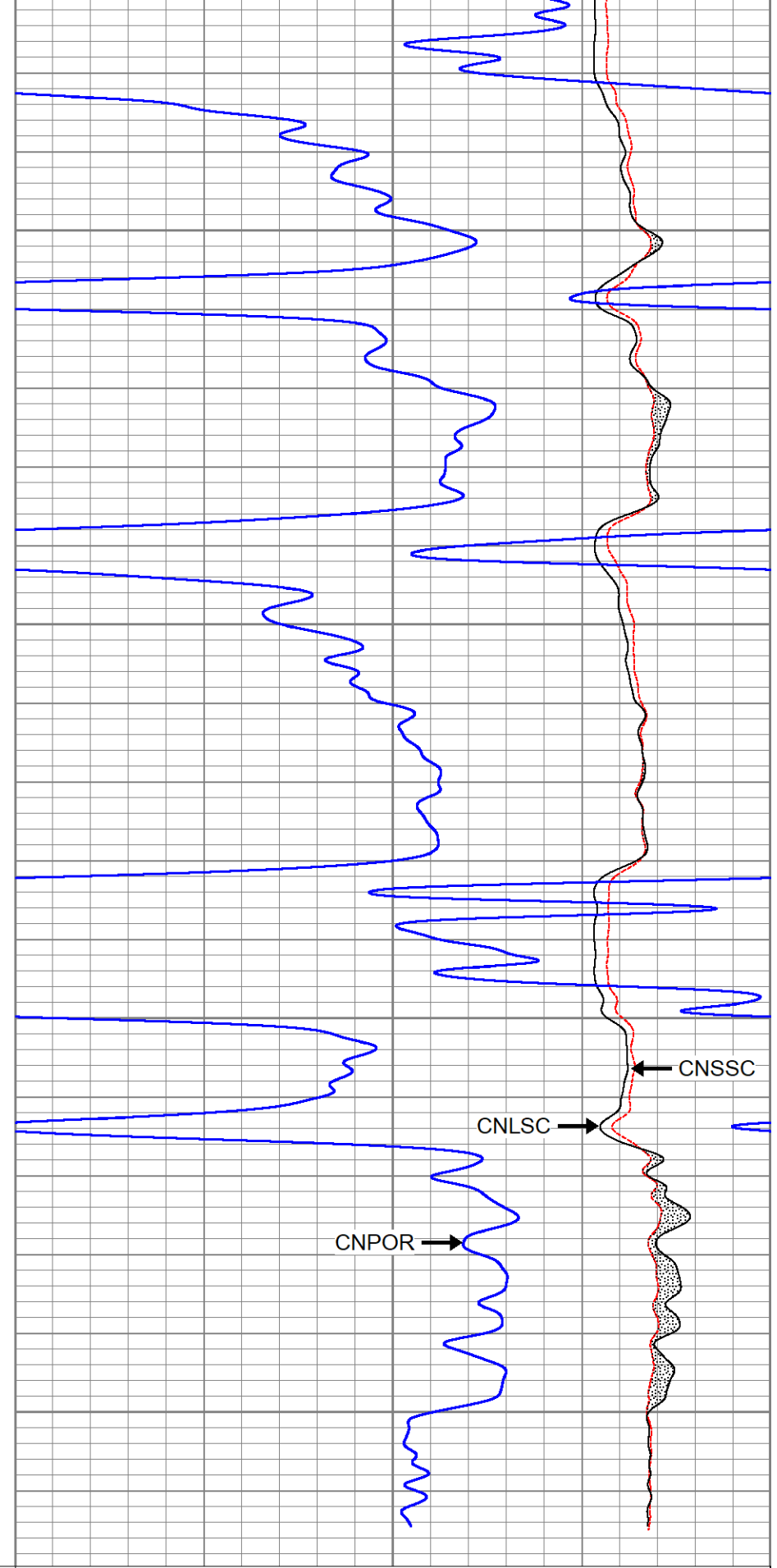
11800

GR →

LTEN →

CCL →

0	GR (GAPI)	200
9	CCL	-1
0	Line Tension (lb)	4000



CNPOR →

CNLSC →

← CNSSC

0.3	CNPOR (pu)	-0.1
-----	------------	------

0	CNLSC (cps)	1500
---	-------------	------

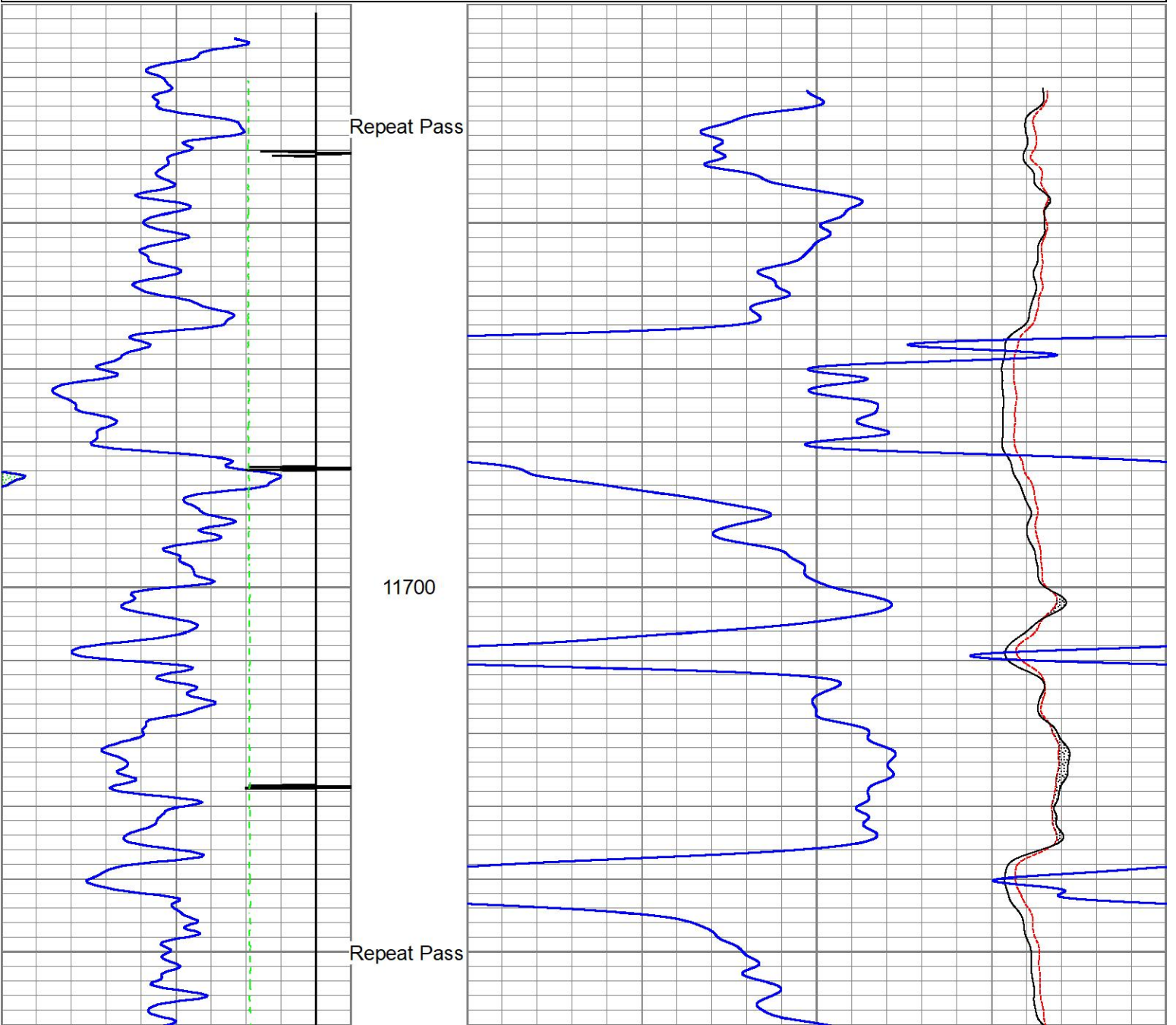
0	CNSSC (cps)	3000
---	-------------	------

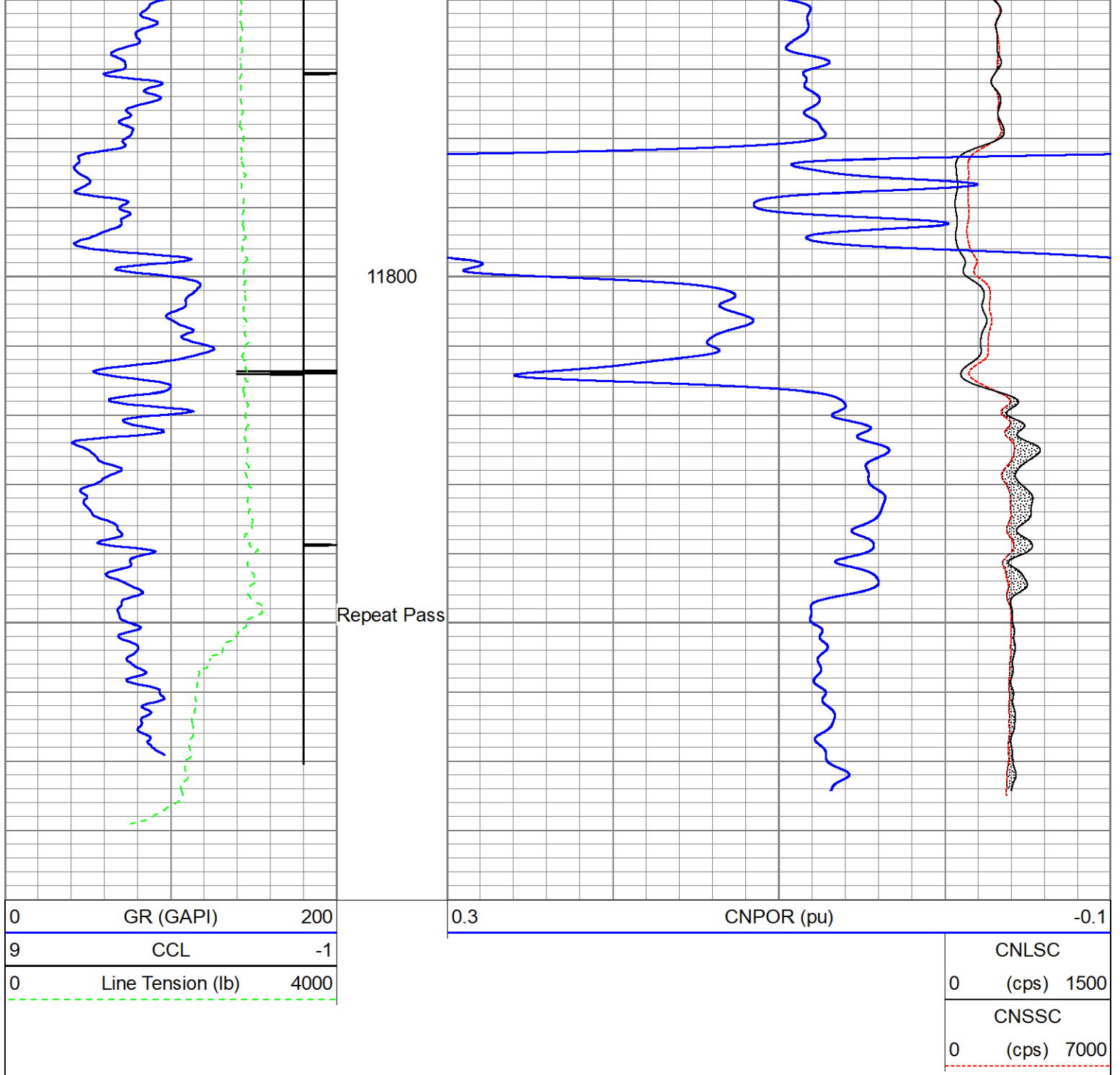


Repeat Pass 5" = 100'

Database File caerus_14d-35_rcbl_cnl_6-22-2022.db
 Dataset Pathname repeat
 Presentation Format twg_cnl
 Dataset Creation Thu Jun 23 08:13:43 2022
 Charted by Depth in Feet scaled 1:240

0	GR (GAPI)	200	0.3	CNPOR (pu)	-0.1
9	CCL	-1			CNLSC
0	Line Tension (lb)	4000			0 (cps) 1500
					CNSSC
					0 (cps) 7000





Calibration Report

Database File caerus_14d-35_rcbl_cnl_6-22-2022.db
 Dataset Pathname main1
 Dataset Creation Thu Jun 23 12:26:12 2022

Compensated Neutron Calibration Report

Model: CNT - 275Dig
 Serial Number: FW1409-35

SHOP CALIBRATION

Thu Mar 31 15:47:13 2022

	Cal Tube	Units
Tank Ratio	11.6940	SS/LS
LS Detector	68.71	cps
SS Detector	748.49	cps

Tool Ratio 10.8929 SS/LS
 Tool Gain 1.0735 ----

PRE-SURVEY VERIFICATION

SS Detector LS Detector Measured (p.u.) Target (p.u.)

POST-SURVEY VERIFICATION

SS Detector LS Detector Measured (p.u.) Target (p.u.)

Gamma Ray Calibration Report

Type / Serial: Probe275dig / FW1403-107

SHOP CALIBRATION (Not Performed)

	Counts/Sec.	Gain	Offset	Jig	Units
Background	0.0				cps
Calibrator	1.0				cps
		1.0000			GAPI/cps

PRIMARY VERIFICATION

Background	0.0				cps
Calibrator	0.0				cps
Difference				0.0	GAPI

BEFORE SURVEY VERIFICATION

Background	0.0				cps
Calibrator	0.0				cps
Difference				0.0	GAPI

AFTER SURVEY VERIFICATION

Background	0.0				cps
Calibrator	0.0				cps
Difference				0.0	GAPI

Segmented Cement Bond Log Calibration Report

Serial Number: FW1312-30
 Tool Model: Probe275acc

Calibration Casing Diameter: 4.500 in
 Calibration Depth: 16.850 ft

Master Calibration, performed Thu Jun 23 07:36:30 2022:

	Raw (v)		Calibrated (mv)		Results	
	Zero	Cal	Zero	Cal	Gain	Offset
3'	0.003	0.743	0.000	81.196	109.806	-0.383
CAL	0.002	0.751				
5'	0.004	0.714	0.000	81.196	114.326	-0.459
SUM						
S1	0.029	0.763	0.000	100.000	136.349	-4.006
S2	0.004	0.763	0.000	100.000	131.734	-0.463
S3	0.002	0.761	0.000	100.000	131.787	0.252

S3	0.003	0.761	0.000	100.000	131.787	-0.332
S4	0.003	0.746	0.000	100.000	134.604	-0.376
S5	0.004	0.757	0.000	100.000	132.823	-0.538
S6	0.002	0.740	0.000	100.000	135.555	-0.333
S7	0.002	0.752	0.000	100.000	133.362	-0.300
S8	0.003	0.751	0.000	100.000	133.695	-0.382

Internal Reference Calibration, performed (Not Performed):

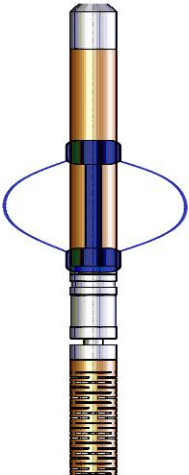
	Raw (v)		Calibrated (v)		Results	
	Zero	Cal	Zero	Cal	Gain	Offset
CAL	0.000	0.000	0.002	0.751	1.000	0.000

Air Zero Calibration, performed Thu Jun 23 07:36:50 2022:

	Raw (v)		Calibrated (v)		Results	
	Zero		Zero		Gain	Offset
3'	0.003		0.000			0.001
5'	0.004		0.000			0.000
SUM						
S1	0.029		0.000			0.000
S2	0.004		0.000			-0.000
S3	0.003		0.000			0.000
S4	0.003		0.000			0.000
S5	0.004		0.000			0.000
S6	0.002		0.000			0.000
S7	0.002		0.000			-0.000
S8	0.004		0.000			-0.001

Inclinometer Calibration Report

	Performed:	(Not Performed)				
		Low Read.	High Read.	Low Ref.	High Ref.	
X Accelerometer		0.00	1.00	0.00	1.00	gee
Y Accelerometer		0.00	1.00	0.00	1.00	gee
Z Accelerometer		0.00	1.00	0.00	1.00	gee

Sensor	Offset (ft)	Schematic	Description	Length (ft)	O.D. (in)	Weight (lb)
WVFS8	14.27		SO BS CENT-2750-4500 Slip Over 2-3/4" I.D. for 4-1/2" O.D. Casing Bow Spring Centralizer	1.33	3.25	10.00
			RBT8acc-Probe275acc (FW1312-30) 2.75" Radial Corrosion with accelerometer	8.75	2.75	110.00

