



Caerus Operating LLC

LONG STRING POST JOB REPORT

BJU G35 FED #25A-35-496 05-045-24348
S:35 T:4S R:96W Garfield CO

CallSheet #: 81356
Proposal #: 59229



LONG STRING Post Job Report

Attention: Mr. Cole Walton | (720) 880-6325 | cwalton@caerusoilandgas.com

Caerus Operating LLC

1001 17TH STREET | DENVER, CO 80202

Dear Mr. Cole Walton,

Thank you for the opportunity to provide cementing services on this well. American Cementing strives to achieve complete customer satisfaction. If you have any questions regarding the services or data provided, please contact American Cementing at any time.

Sincerely,

Zen Keith

SME | (307) 757-7178 | zen.keith@americacementing.com

Field Office 28730 US-6, Rifle, CO 81650
Phone: (970) 657-1157

Job Details & Summary

Geometry

Type	Function	OD (in)	ID (in)	Weight (lb/ft)	Thread	Top (ft)	Bottom (ft)	Excess (%)
Casing	Outer	9.625	8.921	36	n/a	0	2906	0
Open Hole	Outer	n/a	8.75	n/a	n/a	2906	6868	25
Open Hole	Outer	n/a	8.75	n/a	n/a	6868	11980	0
Casing	Inner	4.5	4	11.6	LTC	0	11961.8	0

Equipment / People

Unit Type	Unit	Power Unit	Employee #1	Employee #2
Field Storage Silo	FSS(CTS)-468			
Field Storage Silo	FSS(CTS)-469			
AS Cement Trailer Float	CTF-7145	TRC(TRB)-188		
AS Cement Trailer Float	CTF-138	TRC(TRB)-112		
Cement Trailer Float	CTF-254	TRC(TRB)-195	Morales, Adrian	Bonin, Matthew
AS Cement Trailer Float	CTF-048	TRC(TRB)-180		
AS Cement Trailer Float	CTF(FTF)-148	TRC(TRB)-201		
Light Duty Vehicles	LDV-083		Putnam, Gage	
Cement Pump Float	CPF-052	TRH-957	Brady, Shawn	

Timing

Event	Date/Time
Call Out	5/5/2022 15:45
Depart Facility	5/5/2022 23:00
On Location	5/6/2022 02:00
Rig Up Iron	5/6/2022 02:15
Job Started	5/6/2022 03:02
Job Completed	5/6/2022 05:37
Rig Down Iron	5/6/2022 05:45
Depart Location	5/6/2022 07:15

General Job Information

Metrics	Value
Well Fluid Density	10.4 lb/gal
Well Fluid Type	WBM
Rig Circulation Vol	2660 bbls
Rig Circulation Time	4 hours
Calculated Displacement	184 bbls
Actual Displacement	184 bbls
Total Spacer to Surface	0 bbls
Total CMT to Surface	0 bbls
Well Topped Out	N/A

Job Details

Metrics	Value
Flare Prior to Job	No
Flare Prior to Job	0 units
Flare During Job	No
Flare During Job	0 units
Flare at End of Job	No
Flare at End of Job	0 units
Well Full Prior to Job	Yes
Well Fluid Density Into Well	10.5 lb/gal
Well Fluid Density Out of Well	10.3 lb/gal

Job Details (cont.)

Metrics	Value
BHCT	207 °F
BHST	271 °F

Water Analysis

Metrics	Value	Recommended
Water Source	Flat Tank	
Temperature	41 °F	50-80 °F
pH Level	7	5.5-8.5
Chlorides	72 mg/L	0-3000 mg/L
Total Alkalinity	80	0-1000
Total Hardness	250 mg/L	0-500 mg/L
Carbonates	NA mg/L	0-100 mg/L
Sulfates	200 mg/L	0-1500 mg/L
Potassium	450 mg/L	0-3000 mg/L
Iron	0 mg/L	0-300 mg/L

Circulation

Lost Circulation Experienced	Losses into Spacer	Losses into Cement	Losses into Displacement
Yes	0	401	0

Circulation Details

No returns at beginning of job. Gained returns at 40 bbls into scavenger. Had returns until 136 bbls into tail cement then lost returns for the remainder of the job.

Job Execution Information

Fluid	Product	Function	Density (lb/gal)	Yield (ft ³ /sk)	Water Rq. (gal/sk)	Water Rq. (gal/bbl)	Volume (sks)	Volume (bbl)	Designed Top (ft)
1	Mud Flush	Flush	8.45			40.86		20.00	658
2	Scav Cement	Scavenger	11.50	2.76	16.68		235.00	115.48	1005
3	Lead Cement	Lead	12.70	2.00	11.00		742.00	264.58	3000
4	Tail Cement	Tail	13.50	2.00	9.66		802.00	285.20	6868
5	Water + KCL Sub	DisplacementFinal	8.34			42.00		184.00	0

Job Fluid Details

Fluid	Type	Fluid	Product	Function	Conc.	Uom
1	Flush	Mud Flush	SAPP	Surfactant	10.00	lb/bbl
1	Flush	Mud Flush	SS-201	Surfactant	0.50	gal/bbl
2	Scavenger	Scav Cement	ASTM TYPE I/II	Cement	100.00	%
2	Scavenger	Scav Cement	BA-60	GasMigration	0.30	%BWOB
2	Scavenger	Scav Cement	FP-24	Defoamer	0.30	%BWOB
2	Scavenger	Scav Cement	GW-86	Viscosifier	0.20	%BWOB
2	Scavenger	Scav Cement	IntegraSeal PHENO	LostCirculation	3.00	lb/sk
2	Scavenger	Scav Cement	R-3	Retarder	0.50	%BWOB
2	Scavenger	Scav Cement	STATIC FREE	Other	0.01	lb/sk
3	Lead	Lead Cement	ASTM TYPE I/II	Cement	100.00	%
3	Lead	Lead Cement	BA-60	GasMigration	0.30	%BWOB
3	Lead	Lead Cement	FL-66	FluidLoss	0.50	%BWOB
3	Lead	Lead Cement	FP-24	Defoamer	0.30	%BWOB
3	Lead	Lead Cement	GW-86	Viscosifier	0.10	%BWOB
3	Lead	Lead Cement	IntegraSeal PHENO	LostCirculation	3.00	lb/sk
3	Lead	Lead Cement	R-3	Retarder	0.30	%BWOB
3	Lead	Lead Cement	STATIC FREE	Other	0.01	lb/sk
4	Tail	Tail Cement	CLASS G	Cement	70.00	%
4	Tail	Tail Cement	FLY ASH (POZZOLAN)	Extender	30.00	%
4	Tail	Tail Cement	BA-60	GasMigration	0.20	%BWOB
4	Tail	Tail Cement	BENTONITE	Viscosifier	8.00	%BWOB
4	Tail	Tail Cement	FL-24	FluidLoss	0.40	%BWOB
4	Tail	Tail Cement	FP-24	Defoamer	0.30	%BWOB
4	Tail	Tail Cement	IntegraSeal PHENO	LostCirculation	3.00	lb/sk
4	Tail	Tail Cement	R-3	Retarder	0.25	%BWOB
4	Tail	Tail Cement	S-8	StrengthRetrogression	25.00	%BWOB

Job Logs

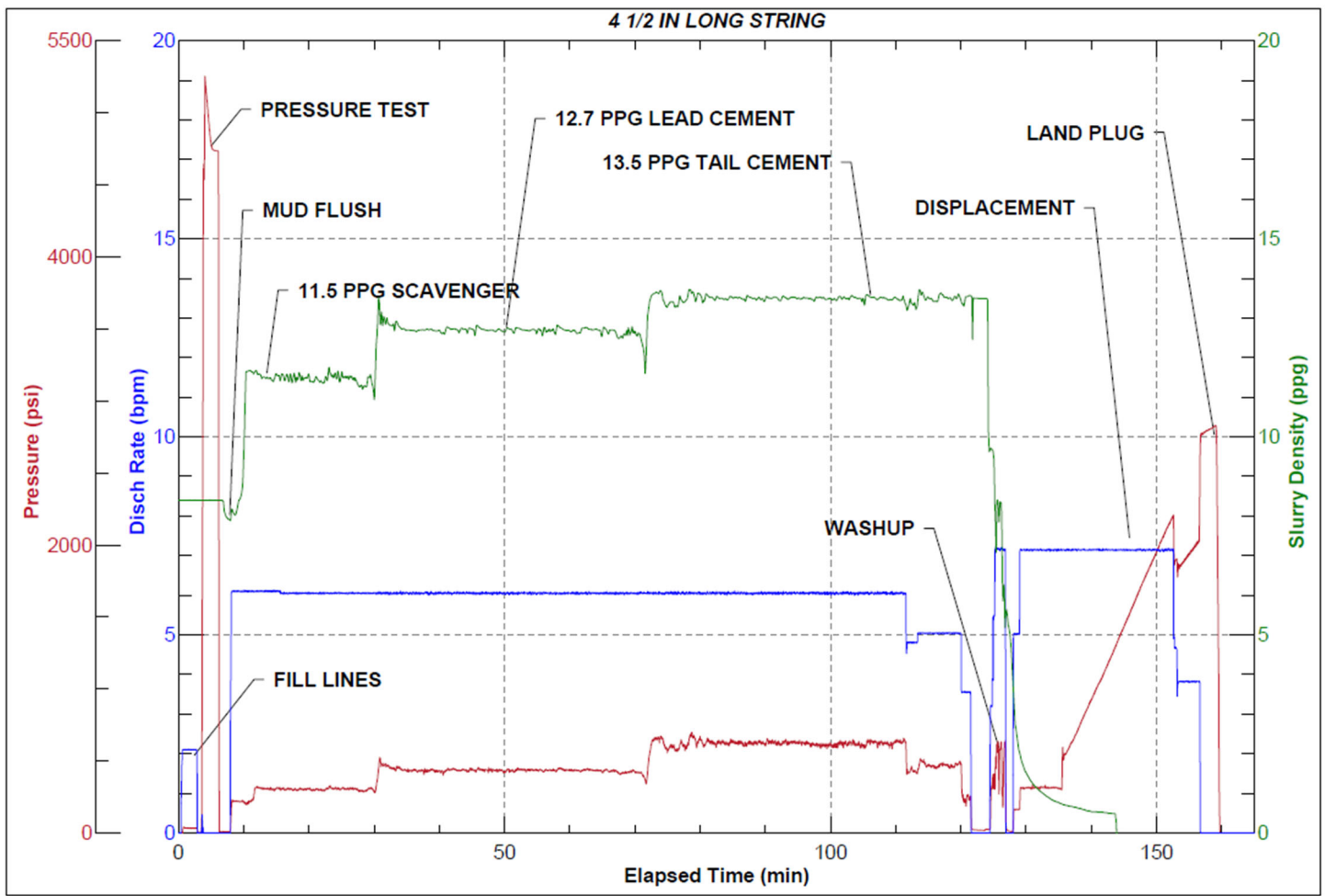
Line	Event	Date (MM/DD/YY)	Time (HH:MM)	Density (lb/gal)	Pump Rate (bpm)	Pump Volume (bbls)	Pipe Pressure (psi)	Comment
1	Callout	5/5/2022	15:45					CREW CALLED OUT FOR ON LOCATION TIME OF 23:00 5/5/22
2	Depart Location	5/5/2022	23:00					CREW DEPARTS RCO YARD FOR LOCATION
3	Arrive On Location	5/6/2022	02:00					FULL CREW ARRIVES ON LOCATION
4	Rig Up Iron	5/6/2022	02:15					RIG UP IRON AND HOSES
5	Safety Meeting	5/6/2022	02:37					JSA SAFETY MEETING WITH AC CREW, RIG HANDS, AND CUSTOMER REP
6	Fill Lines	5/6/2022	03:02	8.34	2	5	40	FILL LINES WITH 5 BBLS FRESH WATER
7	Pressure Test Lines	5/6/2022	03:05				5000	PRESSURE TEST LINES TO 5000 PSI
8	Pump Spacer	5/6/2022	03:08	8.45	6	20	212	PUMP MUD FLUSH WITH SURFACTANT. RIG BEGINS PUMPING 1200 CFM DOWN PARASITE LINE. NO RETURNS.
9	Pump Scavenger	5/6/2022	03:13	11.5	6	0	320	BEGIN PUMPING 11.5 PPG SCAVENGER CEMENT, DENSITY VERIFIED WITH MUD SCALE
10	Pump Scavenger	5/6/2022	03:22	11.5	6	50	300	50 BBLS SCAVENGER PUMPED. BEGIN GETTING RETURNS AT 40 BBLS SCAVENGER PUMPED
11	Pump Scavenger	5/6/2022	03:29	11.5	6	50	296	100 BBLS SCAVENGER PUMPED
12	Pump Scavenger	5/6/2022	03:32	11.5	6	15.5	312	115.5 BBLS SCAVENGER PUMPED
13	Pump Lead Cement	5/6/2022	03:32	12.7	6	0	420	BEGIN PUMPING 12.7 PPG LEAD CEMENT, DENSITY VERIFIED WITH MUD SCALE
14	Pump Lead Cement	5/6/2022	03:40	12.7	6	50	445	50 BBLS LEAD CEMENT PUMPED
15	Pump Lead Cement	5/6/2022	03:48	12.7	6	50	446	100 BBLS LEAD CEMENT PUMPED, RIG REDUCED PARASITE RATE TO 1000 CFM AT 70 BBLS PUMPED
16	Pump Lead Cement	5/6/2022	03:57	12.7	6	50	431	150 BBLS LEAD CEMENT PUMPED
17	Pump Lead Cement	5/6/2022	04:05	12.7	6	50	446	200 BBLS LEAD CEMENT PUMPED
18	Pump Lead Cement	5/6/2022	04:11	12.7	6	50	404	250 BBLS LEAD CEMENT PUMPED
19	Pump Lead Cement	5/6/2022	04:13	12.7	6	14.6	415	264.6 BBLS LEAD CEMENT PUMPED
20	Pump Tail Cement	5/6/2022	04:13	13.5	6	0	617	BEGIN PUMPING TAIL AT 13.5 PPG, DENSITY VERIFIED WITH MUD SCALE
21	Pump Tail Cement	5/6/2022	04:21	13.5	6	50	661	50 BBLS TAIL CEMENT PUMPED
22	Pump Tail Cement	5/6/2022	04:29	13.5	6	50	635	100 BBLS TAIL CEMENT PUMPED, RIG SHUTS DOWN FLOW TO PARASITE LINE
23	Pump Tail Cement	5/6/2022	04:37	13.5	6	50	621	150 BBLS TAIL CEMENT PUMPED, LOSE RETURNS AT 136 BBLS AWAY
24	Pump Tail Cement	5/6/2022	04:46	13.5	6	50	625	200 BBLS TAIL CEMENT PUMPED
25	Pump Tail Cement	5/6/2022	04:54	13.5	5	50	400	250 BBLS TAIL CEMENT PUMPED
26	Pump Tail Cement	5/6/2022	05:02	13.5	3.5	35.2	209	285.2 BBLS TAIL CEMENT PUMPED
27	Clean Pumps and Lines	5/6/2022	05:02					SHUT DOWN, WASH PUMP AND LINES
28	Drop Top Plug	5/6/2022	05:09	8.34	5	0	154	DROP TOP PLUG, WITNESSED BY CUSTOMER REP. BEGIN DISPLACEMENT
29	Pump Displacement	5/6/2022	05:16	8.34	7	50	545	50 BBLS DISPLACEMENT PUMPED, CAUGHT PLUG
30	Pump Displacement	5/6/2022	05:23	8.34	7	50	1175	100 BBLS DISPLACEMENT PUMPED

Line	Event	Date (MM/DD/YY)	Time (HH:MM)	Density (lb/gal)	Pump Rate (bpm)	Pump Volume (bbls)	Pipe Pressure (psi)	Comment
31	Pump Displacement	5/6/2022	05:30	8.34	7	50	1930	150 BBLS DISPLACEMENT PUMPED
32	Pump Displacement	5/6/2022	05:37	8.34	4	34	2100	184 BBLS DISPLACEMENT PUMPED, SLOWED RATE LAST 10 BBLS TO 4 BPM TO LAND PLUG. PRESSURE 2200 PSI BEFORE SLOWING RATE
33	Land Plug	5/6/2022	05:37				2775	LAND PLUG, FCP - 2100 PSI, BUMPED TO 2775 PSI. 569 BBLS OF MUD RETURNED DURING CEMENT JOB
34	Check Floats	5/6/2022	05:39					CHECK FLOATS, FLOATS HELD, 2 BBLS BACK
35	Rig Down Iron	5/6/2022	05:45					RIG DOWN IRON AND HOSES
36	Depart Location	5/6/2022	07:15					DEPART LOCATION FOR RCO YARD

Pump Diagrams



JobMaster Program Version 5.01C1
 Job Number: 81356
 Customer: Caerus
 Well Name: BJU G35 Fed 25A-35-469



Job Start: Friday, May 06, 2022