

BJU G35 FED 25A-35 496  
Garfield County, CO  
Q220400 & RM-220370  
Design #3

Company Name: Caerus Oil & Gas  
BJU G35 FED 25A-35 496  
Garfield County, CO  
Rig: H&P#329  
Created By: Will Jircik  
Date: 20:28, May 05 2022

WELL DETAILS: BJU G35 FED 25A-35 496

		8164.0			
+N/-S	+E/-W	Northing	Easting	Latitude	Longitude
0.0	0.0	14415229.50	2447107.80	39.660285	-108.133937 25A-35

PROJECT DETAILS: Garfield County, CO

System Datum: Universal Transverse Mercator (US Survey Feet)  
Datum: NAD 1927 - Western US  
Ellipsoid: Clarke 1866  
Zone: Zone 12N (114 W to 108 W)  
Geodetic System: Mean Sea Level

DESIGN TARGET DETAILS

Name	TVD	+N/-S	+E/-W	Northing	Easting	Latitude	Longitude
25A-35 - OHCR	7891.0	-2202.4	402.6	14413041.07	2447580.54	39.654241	-108.132507
25A-35 - PBHL	11633.0	-2272.5	331.6	14412968.70	2447511.80	39.654049	-108.132759

DESIGN ANNOTATIONS

MD	Inc	Azi	TVD	+N/-S	+E/-W	VSec	Departure	Annotation
119.0	0.39	130.87	119.0	0.3	0.2	-0.3	0.0	Conductor Tie in
143.2	1.00	167.50	143.2	0.1	0.3	0.0	0.3	EOB @ 1.00° Inc. / 167.50° Azm
685.8	17.28	167.50	677.2	-83.8	18.9	85.7	86.2	EOB @ 17.28° Inc. / 167.50° Azm / Build 3° / 100°
3000.1	17.28	167.50	2886.9	-754.9	167.7	773.6	773.6	Turn 3° / 100°
3032.7	17.28	170.79	2918.1	-764.5	169.5	780.9	783.3	EOT @ 170.79° Azm
7646.6	17.28	170.79	7323.7	-2117.3	388.8	2151.3	2153.8	Drop 3° / 100°
8222.6	0.00	0.00	7891.0	-2202.4	402.6	2237.5	2240.0	EOD @ Vertical / Build 1.5° / 100°
8325.8	1.55	225.35	7994.3	-2203.4	401.6	2238.3	2241.4	EOB @ 1.55° Inc. / 225.35° Azm
11965.9	1.55	225.35	11633.0	-2272.5	331.6	2296.6	2339.8	TD @ 11965.9' MD / 11633.0' TVD

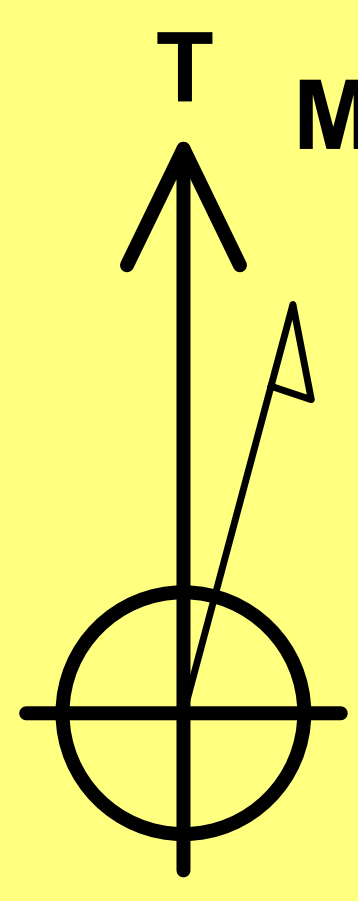
FORMATION TOP DETAILS

TVDPath	MDPath	Formation
2532.0	2628.4	Wasatch
5532.0	5770.2	Wasatch G
5834.0	6086.5	Fort Union
7891.0	8222.6	Ohio Creek
7891.0	8222.6	TOG
8129.0	8460.6	Williams Fork
10857.0	11189.6	Cameo
11433.0	11765.8	Rollins



Azimuths to True North  
Magnetic North: 9.23°

Strength: 51092.3nT  
Dip Angle: 65.72°  
Date: 4/27/2022  
Model: HDGM2022



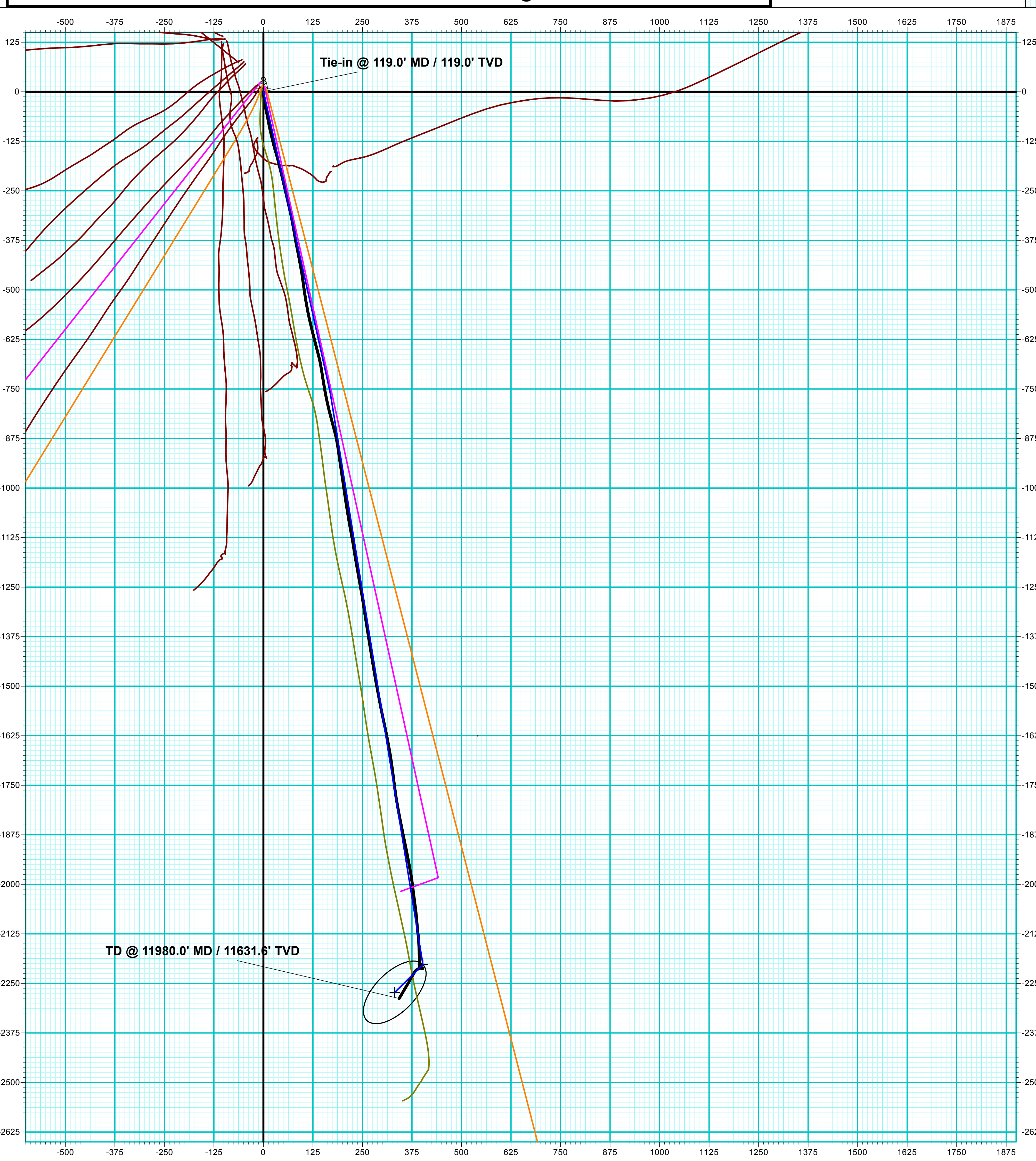
TD @ 11980.0' MD / 11631.6' TVD

ANNOTATIONS

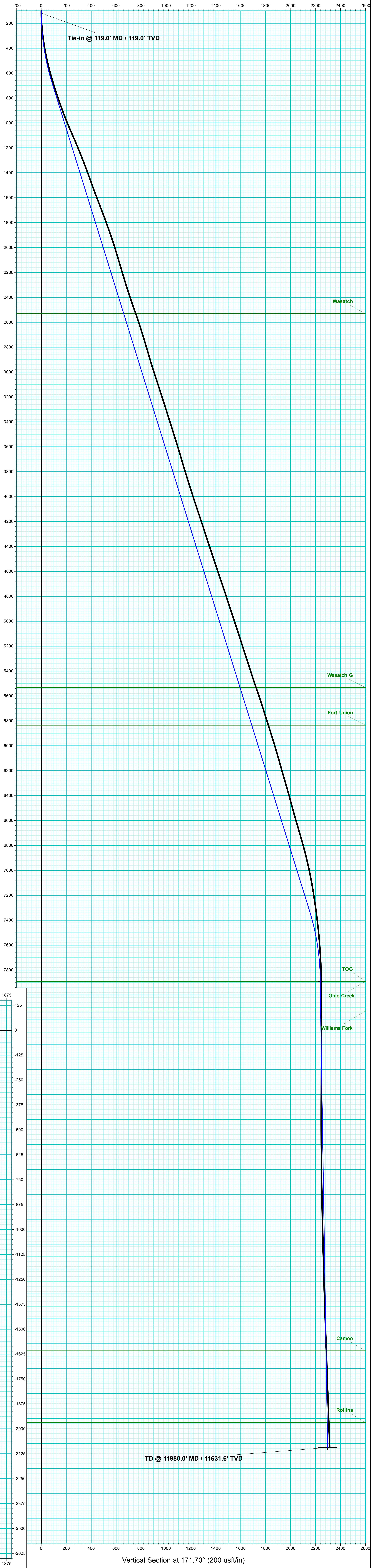
MD	Inc	Azi	TVD	+N/-S	+E/-W	VSec	Departure	Annotation
119.0	0.39	130.87	119.0	0.3	0.2	-0.3	0.6	Tie-in @ 119.0' MD / 119.0' TVD
11980.0	2.60	210.60	11631.6	-2287.9	342.8	2313.4	2358.7	TD @ 11980.0' MD / 11631.6' TVD

DESIGN ANNOTATIONS

MD	Inc	Azi	TVD	+N/-S	+E/-W	VSec	Departure	Annotation
119.0	0.39	130.87	119.0	0.3	0.2	-0.3	0.0	Conductor Tie in
143.2	1.00	167.50	143.2	0.1	0.3	0.0	0.3	EOB @ 1.00° Inc. / 167.50° Azm
685.8	17.28	167.50	677.2	-83.8	18.9	85.7	86.2	EOB @ 17.28° Inc. / 167.50° Azm / Build 3° / 100°
3000.1	17.28	167.50	2886.9	-754.9	167.7	771.3	773.6	Turn 3° / 100°
3032.7	17.28	170.79	2918.1	-764.5	169.5	780.9	783.3	EOT @ 170.79° Azm
7646.6	17.28	170.79	7323.7	-2117.3	388.8	2151.3	2153.8	Drop 3° / 100°
8222.6	0.00	0.00	7891.0	-2202.4	402.6	2237.5	2240.0	EOD @ Vertical / Build 1.5° / 100°
8325.8	1.55	225.35	7994.3	-2203.4	401.6	2238.3	2241.4	EOB @ 1.55° Inc. / 225.35° Azm
11965.9	1.55	225.35	11633.0	-2272.5	331.6	2296.6	2339.8	TD @ 11965.9' MD / 11633.0' TVD



TD @ 11980.0' MD / 11631.6' TVD



Tie-in @ 119.0' MD / 119.0' TVD

TD @ 11980.0' MD / 11631.6' TVD

Vertical Section at 171.70° (200 usf/in)



## **Caerus Oil & Gas**

**Garfield County, CO**

**NPM G35 496 Pad**

**BJU G35 FED 25A-35 496 - Slot 25A-35**

**Wellbore #1**

**Design: Wellbore #1**

## **KLX Survey Report**

**05 May, 2022**



<b>Company:</b>	Caerus Oil & Gas	<b>Local Co-ordinate Reference:</b>	Well BJU G35 FED 25A-35 496 - Slot 25A-35
<b>Project:</b>	Garfield County, CO	<b>TVD Reference:</b>	RKB @ 8194.0usft (H&P#329)
<b>Site:</b>	NPM G35 496 Pad	<b>MD Reference:</b>	RKB @ 8194.0usft (H&P#329)
<b>Well:</b>	BJU G35 FED 25A-35 496	<b>North Reference:</b>	True
<b>Wellbore:</b>	Wellbore #1	<b>Survey Calculation Method:</b>	Minimum Curvature
<b>Design:</b>	Wellbore #1	<b>Database:</b>	EDM 5000.1 Single User Db

<b>Project</b>	Garfield County, CO		
<b>Map System:</b>	Universal Transverse Mercator (US Survey Feet)	<b>System Datum:</b>	Mean Sea Level
<b>Geo Datum:</b>	NAD 1927 - Western US		
<b>Map Zone:</b>	Zone 12N (114 W to 108 W)		

<b>Site</b>	NPM G35 496 Pad				
<b>Site Position:</b>		<b>Northing:</b>	14,415,365.20 usft	<b>Latitude:</b>	39.660667
<b>From:</b>	Map	<b>Easting:</b>	2,447,000.80 usft	<b>Longitude:</b>	-108.134301
<b>Position Uncertainty:</b>	0.0 usft	<b>Slot Radius:</b>	13-3/16 "	<b>Grid Convergence:</b>	1.83 °

<b>Well</b>	BJU G35 FED 25A-35 496 - Slot 25A-35					
<b>Well Position</b>	<b>+N/-S</b>	0.0 usft	<b>Northing:</b>	14,415,229.50 usft	<b>Latitude:</b>	39.660285
	<b>+E/-W</b>	0.0 usft	<b>Easting:</b>	2,447,107.80 usft	<b>Longitude:</b>	-108.133937
<b>Position Uncertainty</b>		0.0 usft	<b>Wellhead Elevation:</b>	usft	<b>Ground Level:</b>	8,164.0 usft

<b>Wellbore</b>	Wellbore #1				
<b>Magnetics</b>	<b>Model Name</b>	<b>Sample Date</b>	<b>Declination (°)</b>	<b>Dip Angle (°)</b>	<b>Field Strength (nT)</b>
	HDGM2022	4/27/2022	9.23	65.72	51,092.30000000

<b>Design</b>	Wellbore #1				
<b>Audit Notes:</b>					
<b>Version:</b>	1.0	<b>Phase:</b>	ACTUAL	<b>Tie On Depth:</b>	0.0
<b>Vertical Section:</b>	<b>Depth From (TVD) (usft)</b>	<b>+N/-S (usft)</b>	<b>+E/-W (usft)</b>	<b>Direction (°)</b>	
	0.0	0.0	0.0	171.70	

<b>Survey Program</b>	<b>Date</b>	5/5/2022			
<b>From (usft)</b>	<b>To (usft)</b>	<b>Survey (Wellbore)</b>	<b>Tool Name</b>	<b>Description</b>	
30.0	119.0	Sfc Gyro (Wellbore #1)	GYRO-NS	OWSG Gyrocompass Gyro	
239.0	11,980.0	KLX MWD (Wellbore #1)	MWD	OWSG MWD - Standard	

<b>Survey</b>										
<b>Measured Depth (usft)</b>	<b>Inclination (°)</b>	<b>Azimuth (°)</b>	<b>Vertical Depth (usft)</b>	<b>+N/-S (usft)</b>	<b>+E/-W (usft)</b>	<b>Vertical Section (usft)</b>	<b>Dogleg Rate (°/100usft)</b>	<b>Build Rate (°/100usft)</b>	<b>Turn Rate (°/100usft)</b>	
0.0	0.00	0.00	0.0	0.0	0.0	0.0	0.00	0.00	0.00	
30.0	0.00	0.00	30.0	0.0	0.0	0.0	0.00	0.00	0.00	
60.0	0.49	359.19	60.0	0.1	0.0	-0.1	1.63	1.63	0.00	
90.0	0.40	51.38	90.0	0.3	0.1	-0.3	1.33	-0.30	173.97	
<b>Tie-in @ 119.0' MD / 119.0' TVD</b>										
119.0	0.39	130.87	119.0	0.3	0.2	-0.3	1.74	-0.03	274.10	
239.0	5.30	178.20	238.8	-5.5	0.7	5.5	4.20	4.09	39.44	
330.0	7.80	174.10	329.2	-15.8	1.5	15.9	2.79	2.75	-4.51	
422.0	10.40	169.90	420.1	-30.2	3.6	30.4	2.92	2.83	-4.57	
514.0	13.20	167.40	510.1	-48.7	7.3	49.2	3.09	3.04	-2.72	

<b>Company:</b>	Caerus Oil & Gas	<b>Local Co-ordinate Reference:</b>	Well BJU G35 FED 25A-35 496 - Slot 25A-35
<b>Project:</b>	Garfield County, CO	<b>TVD Reference:</b>	RKB @ 8194.0usft (H&P#329)
<b>Site:</b>	NPM G35 496 Pad	<b>MD Reference:</b>	RKB @ 8194.0usft (H&P#329)
<b>Well:</b>	BJU G35 FED 25A-35 496	<b>North Reference:</b>	True
<b>Wellbore:</b>	Wellbore #1	<b>Survey Calculation Method:</b>	Minimum Curvature
<b>Design:</b>	Wellbore #1	<b>Database:</b>	EDM 5000.1 Single User Db

Survey										
Measured Depth (usft)	Inclination (°)	Azimuth (°)	Vertical Depth (usft)	+N/-S (usft)	+E/-W (usft)	Vertical Section (usft)	Dogleg Rate (°/100usft)	Build Rate (°/100usft)	Turn Rate (°/100usft)	
608.0	15.60	169.60	601.1	-71.6	12.0	72.5	2.62	2.55	2.34	
703.0	17.30	167.50	692.2	-97.9	17.3	99.4	1.90	1.79	-2.21	
797.0	18.70	165.90	781.6	-126.2	24.0	128.3	1.58	1.49	-1.70	
892.0	19.50	163.30	871.4	-156.1	32.3	159.2	1.23	0.84	-2.74	
987.0	21.60	166.70	960.4	-188.3	40.9	192.3	2.54	2.21	3.58	
1,081.0	23.60	166.30	1,047.1	-223.5	49.3	228.2	2.13	2.13	-0.43	
1,176.0	23.50	167.30	1,134.2	-260.4	58.0	266.1	0.43	-0.11	1.05	
1,271.0	22.00	166.70	1,221.8	-296.2	66.2	302.7	1.60	-1.58	-0.63	
1,365.0	21.30	169.50	1,309.2	-330.1	73.4	337.3	1.33	-0.74	2.98	
1,460.0	20.40	170.40	1,398.0	-363.4	79.3	371.1	1.01	-0.95	0.95	
1,554.0	19.30	168.40	1,486.4	-394.8	85.1	403.0	1.38	-1.17	-2.13	
1,649.0	21.00	169.20	1,575.6	-426.9	91.5	435.6	1.81	1.79	0.84	
1,743.0	21.20	171.10	1,663.3	-460.2	97.3	469.5	0.76	0.21	2.02	
1,837.0	20.40	172.50	1,751.2	-493.3	102.0	502.8	1.00	-0.85	1.49	
1,932.0	19.60	170.60	1,840.4	-525.4	106.8	535.3	1.08	-0.84	-2.00	
2,027.0	18.90	168.60	1,930.1	-556.2	112.5	566.6	1.01	-0.74	-2.11	
2,121.0	16.80	166.50	2,019.6	-584.4	118.6	595.4	2.34	-2.23	-2.23	
2,216.0	16.60	166.10	2,110.6	-610.9	125.1	622.5	0.24	-0.21	-0.42	
2,310.0	16.60	165.20	2,200.7	-636.9	131.8	649.2	0.27	0.00	-0.96	
2,405.0	17.50	165.30	2,291.5	-663.8	138.8	676.9	0.95	0.95	0.11	
2,499.0	18.10	170.20	2,381.0	-691.9	144.9	705.6	1.72	0.64	5.21	
2,594.0	19.40	171.40	2,471.0	-722.0	149.8	736.1	1.43	1.37	1.26	
2,688.0	19.10	169.50	2,559.7	-752.6	154.9	767.1	0.74	-0.32	-2.02	
2,783.0	17.70	168.00	2,649.8	-782.0	160.8	797.0	1.56	-1.47	-1.58	
2,864.0	17.00	165.90	2,727.2	-805.5	166.2	821.1	1.16	-0.86	-2.59	
2,978.0	16.40	164.40	2,836.3	-837.2	174.6	853.6	0.65	-0.53	-1.32	
3,073.0	16.70	166.30	2,927.4	-863.4	181.4	880.5	0.65	0.32	2.00	
3,168.0	18.40	170.70	3,018.0	-891.4	187.1	909.1	2.27	1.79	4.63	
3,262.0	18.10	171.70	3,107.3	-920.5	191.6	938.5	0.46	-0.32	1.06	
3,357.0	17.60	172.00	3,197.7	-949.4	195.7	967.7	0.54	-0.53	0.32	
3,451.0	17.80	171.80	3,287.2	-977.6	199.8	996.2	0.22	0.21	-0.21	
3,546.0	17.40	171.50	3,377.8	-1,006.1	203.9	1,025.0	0.43	-0.42	-0.32	
3,641.0	17.30	171.60	3,468.5	-1,034.1	208.1	1,053.3	0.11	-0.11	0.11	
3,735.0	17.70	170.30	3,558.1	-1,062.0	212.5	1,081.6	0.59	0.43	-1.38	
3,830.0	16.40	170.60	3,648.9	-1,089.5	217.2	1,109.4	1.37	-1.37	0.32	
3,924.0	16.20	168.60	3,739.2	-1,115.4	221.9	1,135.8	0.63	-0.21	-2.13	
4,019.0	17.70	171.40	3,830.0	-1,142.7	226.7	1,163.4	1.80	1.58	2.95	
4,113.0	17.30	170.30	3,919.7	-1,170.6	231.2	1,191.7	0.55	-0.43	-1.17	
4,208.0	18.10	169.80	4,010.2	-1,199.0	236.2	1,220.6	0.86	0.84	-0.53	
4,305.0	18.40	170.20	4,102.3	-1,229.0	241.5	1,250.9	0.34	0.31	0.41	
4,397.0	18.70	169.80	4,189.5	-1,257.8	246.5	1,280.2	0.35	0.33	-0.43	
4,492.0	17.60	171.00	4,279.8	-1,287.0	251.5	1,309.8	1.22	-1.16	1.26	
4,586.0	18.60	171.30	4,369.1	-1,315.8	256.0	1,339.0	1.07	1.06	0.32	

<b>Company:</b>	Caerus Oil & Gas	<b>Local Co-ordinate Reference:</b>	Well BJU G35 FED 25A-35 496 - Slot 25A-35
<b>Project:</b>	Garfield County, CO	<b>TVD Reference:</b>	RKB @ 8194.0usft (H&P#329)
<b>Site:</b>	NPM G35 496 Pad	<b>MD Reference:</b>	RKB @ 8194.0usft (H&P#329)
<b>Well:</b>	BJU G35 FED 25A-35 496	<b>North Reference:</b>	True
<b>Wellbore:</b>	Wellbore #1	<b>Survey Calculation Method:</b>	Minimum Curvature
<b>Design:</b>	Wellbore #1	<b>Database:</b>	EDM 5000.1 Single User Db

Survey										
Measured Depth (usft)	Inclination (°)	Azimuth (°)	Vertical Depth (usft)	+N/-S (usft)	+E/-W (usft)	Vertical Section (usft)	Dogleg Rate (°/100usft)	Build Rate (°/100usft)	Turn Rate (°/100usft)	
4,681.0	18.30	171.00	4,459.3	-1,345.5	260.6	1,369.0	0.33	-0.32	-0.32	
4,776.0	18.50	170.90	4,549.4	-1,375.1	265.3	1,399.0	0.21	0.21	-0.11	
4,870.0	18.60	171.00	4,638.5	-1,404.7	270.0	1,428.9	0.11	0.11	0.11	
4,965.0	18.90	170.30	4,728.5	-1,434.8	275.0	1,459.5	0.39	0.32	-0.74	
5,060.0	17.80	171.10	4,818.7	-1,464.3	279.8	1,489.4	1.19	-1.16	0.84	
5,155.0	18.10	169.50	4,909.0	-1,493.2	284.8	1,518.6	0.61	0.32	-1.68	
5,249.0	18.80	168.70	4,998.2	-1,522.4	290.4	1,548.3	0.79	0.74	-0.85	
5,344.0	17.70	169.70	5,088.4	-1,551.6	296.0	1,578.1	1.20	-1.16	1.05	
5,438.0	17.80	167.40	5,177.9	-1,579.7	301.7	1,606.7	0.75	0.11	-2.45	
5,533.0	18.50	168.10	5,268.2	-1,608.6	307.9	1,636.2	0.77	0.74	0.74	
5,628.0	17.40	169.20	5,358.6	-1,637.3	313.7	1,665.4	1.21	-1.16	1.16	
5,722.0	18.10	170.10	5,448.1	-1,665.5	318.8	1,694.1	0.80	0.74	0.96	
5,817.0	19.30	172.20	5,538.1	-1,695.6	323.5	1,724.5	1.45	1.26	2.21	
5,911.0	18.30	172.30	5,627.1	-1,725.6	327.6	1,754.8	1.06	-1.06	0.11	
6,006.0	17.40	173.20	5,717.5	-1,754.5	331.3	1,783.9	0.99	-0.95	0.95	
6,101.0	17.60	170.80	5,808.1	-1,782.8	335.3	1,812.5	0.79	0.21	-2.53	
6,195.0	17.80	169.50	5,897.7	-1,810.9	340.2	1,841.1	0.47	0.21	-1.38	
6,290.0	16.80	168.80	5,988.4	-1,838.7	345.5	1,869.3	1.08	-1.05	-0.74	
6,385.0	16.10	168.50	6,079.5	-1,865.0	350.8	1,896.1	0.74	-0.74	-0.32	
6,479.0	15.40	168.10	6,169.9	-1,890.0	355.9	1,921.6	0.75	-0.74	-0.43	
6,574.0	16.40	168.70	6,261.3	-1,915.5	361.2	1,947.6	1.07	1.05	0.63	
6,669.0	16.00	169.50	6,352.5	-1,941.5	366.2	1,974.1	0.48	-0.42	0.84	
6,763.0	14.90	169.20	6,443.1	-1,966.2	370.8	1,999.1	1.17	-1.17	-0.32	
6,858.0	16.00	172.20	6,534.7	-1,991.1	374.9	2,024.4	1.43	1.16	3.16	
6,953.0	16.00	173.10	6,626.0	-2,017.1	378.2	2,050.6	0.26	0.00	0.95	
7,047.0	16.20	172.10	6,716.3	-2,042.9	381.6	2,076.6	0.36	0.21	-1.06	
7,142.0	15.40	173.60	6,807.8	-2,068.6	384.8	2,102.5	0.95	-0.84	1.58	
7,237.0	13.60	175.40	6,899.7	-2,092.3	387.1	2,126.2	1.95	-1.89	1.89	
7,331.0	12.10	174.00	6,991.4	-2,113.1	389.0	2,147.1	1.63	-1.60	-1.49	
7,426.0	10.70	173.80	7,084.5	-2,131.8	391.0	2,165.9	1.47	-1.47	-0.21	
7,520.0	8.90	177.40	7,177.1	-2,147.7	392.3	2,181.8	2.02	-1.91	3.83	
7,615.0	8.70	177.80	7,271.0	-2,162.2	392.9	2,196.3	0.22	-0.21	0.42	
7,710.0	7.00	178.50	7,365.1	-2,175.2	393.3	2,209.2	1.79	-1.79	0.74	
7,804.0	6.50	178.70	7,458.4	-2,186.2	393.6	2,220.2	0.53	-0.53	0.21	
7,899.0	4.40	176.20	7,553.0	-2,195.2	394.0	2,229.1	2.22	-2.21	-2.63	
7,994.0	4.10	178.70	7,647.8	-2,202.3	394.3	2,236.1	0.37	-0.32	2.63	
8,088.0	2.60	168.10	7,741.6	-2,207.7	394.8	2,241.6	1.72	-1.60	-11.28	
8,183.0	1.60	137.80	7,836.5	-2,210.8	396.1	2,244.8	1.54	-1.05	-31.89	
8,278.0	1.00	95.90	7,931.5	-2,211.9	397.8	2,246.1	1.14	-0.63	-44.11	
8,372.0	0.70	99.20	8,025.5	-2,212.1	399.2	2,246.5	0.32	-0.32	3.51	
8,467.0	0.60	108.90	8,120.5	-2,212.3	400.3	2,246.9	0.16	-0.11	10.21	
8,561.0	0.50	82.40	8,214.5	-2,212.4	401.1	2,247.2	0.29	-0.11	-28.19	
8,656.0	0.50	110.30	8,309.5	-2,212.5	401.9	2,247.4	0.25	0.00	29.37	

<b>Company:</b>	Caerus Oil & Gas	<b>Local Co-ordinate Reference:</b>	Well BJU G35 FED 25A-35 496 - Slot 25A-35
<b>Project:</b>	Garfield County, CO	<b>TVD Reference:</b>	RKB @ 8194.0usft (H&P#329)
<b>Site:</b>	NPM G35 496 Pad	<b>MD Reference:</b>	RKB @ 8194.0usft (H&P#329)
<b>Well:</b>	BJU G35 FED 25A-35 496	<b>North Reference:</b>	True
<b>Wellbore:</b>	Wellbore #1	<b>Survey Calculation Method:</b>	Minimum Curvature
<b>Design:</b>	Wellbore #1	<b>Database:</b>	EDM 5000.1 Single User Db

Survey										
Measured Depth (usft)	Inclination (°)	Azimuth (°)	Vertical Depth (usft)	+N/-S (usft)	+E/-W (usft)	Vertical Section (usft)	Dogleg Rate (°/100usft)	Build Rate (°/100usft)	Turn Rate (°/100usft)	
8,750.0	0.30	341.80	8,403.5	-2,212.4	402.2	2,247.3	0.77	-0.21	-136.70	
8,845.0	0.50	302.00	8,498.5	-2,212.0	401.8	2,246.8	0.35	0.21	-41.89	
8,939.0	0.70	279.20	8,592.5	-2,211.7	400.9	2,246.4	0.33	0.21	-24.26	
9,034.0	0.40	284.40	8,687.5	-2,211.5	400.0	2,246.1	0.32	-0.32	5.47	
9,129.0	0.30	286.70	8,782.5	-2,211.3	399.4	2,245.8	0.11	-0.11	2.42	
9,223.0	0.70	282.10	8,876.5	-2,211.1	398.7	2,245.5	0.43	0.43	-4.89	
9,318.0	0.90	268.50	8,971.5	-2,211.0	397.3	2,245.2	0.29	0.21	-14.32	
9,413.0	1.20	254.10	9,066.4	-2,211.3	395.6	2,245.3	0.42	0.32	-15.16	
9,507.0	1.30	248.60	9,160.4	-2,212.0	393.7	2,245.6	0.17	0.11	-5.85	
9,602.0	1.60	237.30	9,255.4	-2,213.1	391.6	2,246.4	0.43	0.32	-11.89	
9,697.0	1.70	242.20	9,350.3	-2,214.5	389.2	2,247.5	0.18	0.11	5.16	
9,791.0	1.50	239.30	9,444.3	-2,215.7	386.9	2,248.4	0.23	-0.21	-3.09	
9,886.0	1.50	228.80	9,539.3	-2,217.2	384.9	2,249.5	0.29	0.00	-11.05	
9,980.0	1.70	218.00	9,633.2	-2,219.1	383.1	2,251.2	0.38	0.21	-11.49	
10,074.0	1.60	208.00	9,727.2	-2,221.4	381.7	2,253.2	0.32	-0.11	-10.64	
10,169.0	1.70	212.20	9,822.2	-2,223.7	380.3	2,255.3	0.17	0.11	4.42	
10,263.0	1.70	210.20	9,916.1	-2,226.1	378.8	2,257.5	0.06	0.00	-2.13	
10,358.0	1.80	208.70	10,011.1	-2,228.6	377.4	2,259.8	0.12	0.11	-1.58	
10,453.0	2.00	213.00	10,106.0	-2,231.3	375.8	2,262.2	0.26	0.21	4.53	
10,547.0	2.10	221.00	10,200.0	-2,234.0	373.8	2,264.6	0.32	0.11	8.51	
10,642.0	2.20	208.30	10,294.9	-2,236.9	371.8	2,267.2	0.51	0.11	-13.37	
10,736.0	2.20	203.20	10,388.8	-2,240.2	370.2	2,270.2	0.21	0.00	-5.43	
10,831.0	2.20	200.30	10,483.8	-2,243.6	368.8	2,273.3	0.12	0.00	-3.05	
10,926.0	2.50	209.40	10,578.7	-2,247.1	367.2	2,276.6	0.50	0.32	9.58	
11,020.0	2.50	214.50	10,672.6	-2,250.6	365.0	2,279.7	0.24	0.00	5.43	
11,114.0	2.60	210.60	10,766.5	-2,254.1	362.8	2,282.8	0.21	0.11	-4.15	
<b>TD @ 11980.0' MD / 11631.6' TVD</b>										
11,980.0	2.60	210.60	11,631.6	-2,287.9	342.8	2,313.4	0.00	0.00	0.00	

Design Annotations					
Measured Depth (usft)	Vertical Depth (usft)	Local Coordinates		Comment	
		+N/-S (usft)	+E/-W (usft)		
119.0	119.0	0.3	0.2	Tie-in @ 119.0' MD / 119.0' TVD	
11,980.0	11,631.6	-2,287.9	342.8	TD @ 11980.0' MD / 11631.6' TVD	