



Caerus Operating LLC

TWO-STAGE/MULTI-STAGE CEMENT POST JOB REPORT

BJU G35 FED #25A-35-496 05-045-24348
S:35 T:4S R:96W Garfield CO

CallSheet #: 81256
Proposal #: 59227



TWO-STAGE/MULTI-STAGE CEMENT Post Job Report

Attention: Mr. Cole Walton | (720) 880-6325 | cwalton@caerusoilandgas.com

Caerus Operating LLC

1001 17TH STREET | DENVER, CO 80202

Dear Mr. Cole Walton,

Thank you for the opportunity to provide cementing services on this well. American Cementing strives to achieve complete customer satisfaction. If you have any questions regarding the services or data provided, please contact American Cementing at any time.

Sincerely,

Zen Keith

SME | (307) 757-7178 | zen.keith@americacementing.com

Field Office 28730 US-6, Rifle, CO 81650
Phone: (970) 657-1157

Job Details & Summary

Geometry

Type	Function	OD (in)	ID (in)	Weight (lb/ft)	Thread	Top (ft)	Bottom (ft)	Excess (%)
Casing	Outer	20	19.5	53	n/a	0	100	0
Open Hole	Outer	n/a	14.75	n/a	n/a	100	2500	25
Open Hole	Outer	n/a	14.75	n/a	n/a	2500	2924	0
Casing	Inner	9.625	8.921	36	n/a	0	2906.3	0
DV Tool							835.7	

Equipment / People

Unit Type	Unit	Power Unit	Employee #1
Field Storage Silo	FSS(CTS)-469		
Field Storage Silo	FSS(CTS)-468		
Cement Trailer Float	CTF-385	TRC(TRB)-424	Robertson, Johnny
AS Cement Trailer Float	CTF(FTF)-148	TRC(TRB)-090	
AS Cement Trailer Float	CTF-9299	TRC(TRB)-180	
Cement Trailer Float	CTF-246	TRH(TRB)-769	Martin, Chuck
Light Duty Vehicles	LDV-063		Castillo, Francisco
Cement Pump Float	CPF-011	TRH-959	Hale, Jason

Timing

Event	Date/Time
Call Out	4/30/2022 10:00
Depart Facility	4/30/2022 12:25
On Location	4/30/2022 13:35
Rig Up Iron	4/30/2022 13:45
Job Started	4/30/2022 16:08
Job Completed	5/1/2022 14:05
Rig Down Iron	5/1/2022 14:30
Depart Location	5/1/2022 15:30

General Job Information

Metrics	Value
Well Fluid Density	9.1 lb/gal
Well Fluid Type	WBM
Rig Circulation Vol	300 bbls
Rig Circulation Time	0.5 hours
Calculated Displacement	219 bbls
Actual Displacement	219 bbls
Total Spacer to Surface	0 bbls
Total CMT to Surface	0 bbls
Well Topped Out	Yes
Top Out Volume	211 bbls

Job Details

Metrics	Value
Flare Prior to Job	No
Flare During Job	No
Flare at End of Job	No
Well Full Prior to Job	Yes
Well Fluid Density Into Well	9.1 lb/gal
Well Fluid Density Out of Well	9.1 lb/gal

Job Details (cont.)

Metrics	Value
BHCT	90 °F
BHST	129 °F

Water Analysis

Metrics	Value	Recommended
Water Source	Upright Rig Tank	
Temperature	67 °F	50-80 °F
pH Level	7	5.5-8.5
Chlorides	0 mg/L	0-3000 mg/L
Total Alkalinity	240	0-1000
Total Hardness	250 mg/L	0-500 mg/L
Carbonates	0 mg/L	0-100 mg/L
Sulfates	200 mg/L	0-1500 mg/L
Potassium	250 mg/L	0-3000 mg/L
Iron	0 mg/L	0-300 mg/L

Circulation

Lost Circulation Experienced	Losses into Spacer	Losses into Cement	Losses into Displacement
Yes	N/A	N/A	N/A

Circulation Details

NO RETURNS THROUGH OUT THE ENTIRE JOB

Job Execution Information

Fluid	Product	Function	Density (lb/gal)	Yield (ft ³ /sk)	Water Rq. (gal/sk)	Water Rq. (gal/bbl)	Volume (sks)	Volume (bbl)	Designed Top (ft)
1	Water	Flush	8.34			42.00		40.00	786
2	Stage-1 Lead	Lead	12.00	2.52	14.80		490.00	220.14	1050
3	Stage-1 Tail	Tail	12.50	2.23	12.56		161.00	63.94	2500
4	Water	DisplacementFinal	8.34			42.00		219.00	0
1	Water	Flush	8.34			42.00		40.00	0
2	Stage-2 Primary	Primary	12.00	2.55	14.95		379.00	172.13	0
3	Water	DisplacementFinal	8.34			42.00		62.00	0
5	Class G + CC	Topout	15.80	1.15	5.00		719.00	147.00	0

Job Fluid Details

Fluid	Type	Fluid	Product	Function	Conc.	Uom
2	Lead	Stage-1 Lead	ASTM TYPE I/II	Cement	100.00	%
2	Lead	Stage-1 Lead	A-10	Accelerator	5.00	%BWOB
2	Lead	Stage-1 Lead	A-2	Accelerator	3.00	lb/sk
2	Lead	Stage-1 Lead	FP-24	Defoamer	0.30	%BWOB
2	Lead	Stage-1 Lead	IntegraSeal PHENO	LostCirculation	0.50	lb/sk
2	Lead	Stage-1 Lead	IntegraSeal POLI	LostCirculation	0.25	lb/sk
2	Lead	Stage-1 Lead	R-7C	Retarder	0.30	%BWOB
2	Lead	Stage-1 Lead	STATIC FREE	Other	0.01	lb/sk
3	Tail	Stage-1 Tail	ASTM TYPE I/II	Cement	100.00	%
3	Tail	Stage-1 Tail	A-10	Accelerator	5.00	%BWOB
3	Tail	Stage-1 Tail	A-2	Accelerator	2.00	lb/sk
3	Tail	Stage-1 Tail	A-7P	Accelerator	2.00	lb/sk
3	Tail	Stage-1 Tail	FP-24	Defoamer	0.30	%BWOB
3	Tail	Stage-1 Tail	IntegraSeal PHENO	LostCirculation	0.50	lb/sk
3	Tail	Stage-1 Tail	IntegraSeal POLI	LostCirculation	0.25	lb/sk
3	Tail	Stage-1 Tail	STATIC FREE	Other	0.01	lb/sk
2	Primary	Stage-2 Primary	ASTM TYPE I/II	Cement	100.00	%
2	Primary	Stage-2 Primary	A-10	Accelerator	5.00	%BWOB
2	Primary	Stage-2 Primary	A-2	Accelerator	3.00	lb/sk
2	Primary	Stage-2 Primary	A-7P	Accelerator	2.00	lb/sk
2	Primary	Stage-2 Primary	FP-24	Defoamer	0.30	%BWOB
2	Primary	Stage-2 Primary	IntegraSeal POLI	LostCirculation	0.25	lb/sk
2	Primary	Stage-2 Primary	STATIC FREE	Other	0.01	lb/sk
5	Topout	Class G + CC	CLASS G	Cement	100.00	%

Job Logs

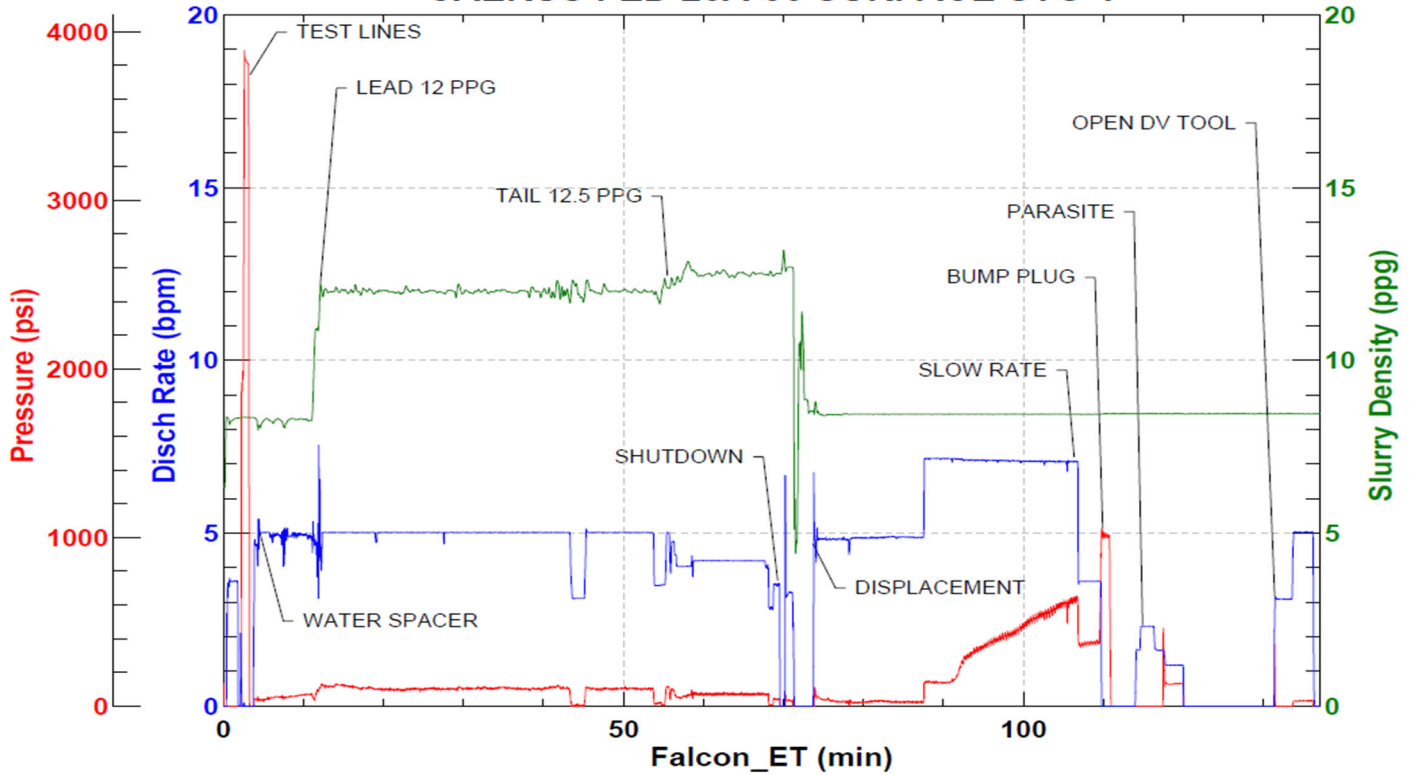
Line	Event	Date (MM/DD/YY)	Time (HH:MM)	Density (lb/gal)	Pump Rate (bpm)	Pump Volume (bbls)	Pipe Pressure (psi)	Comment
1	CALLOUT	4/30/2022	10:00					ON LOCATION AT 14:00 HRS
2	LEAVE YARD	4/30/2022	12:25					CREW LEAVE THE YARD
3	ON LOCATION	4/30/2022	13:35					CREW ON LOCATION
4	RIG UP	4/30/2022	13:45					RIG UP MEETING, RIG UP
5	SAFETY MEETING	4/30/2022	15:45					PRE-JOB SAFETY MEETING
6	PRESSURE TEST	4/30/2022	16:06				3800	PRESSURE TEST LINES
7	PUMP SPACER	4/30/2022	16:08	8.34	5	40	63	WATER SPACER
8	LEAD CEMENT	4/30/2022	16:15	12	5	50	95	LEAD 490 SKS/220 BBLS AT 12 PPG
9	LEAD CEMENT	4/30/2022	16:25	12	5	50	103	100 BBLS LEAD CEMENT PUMPED
10	LEAD CEMENT	4/30/2022	16:35	12	5	50	105	150 BBLS LEAD CEMENT PUMPED
11	LEAD CEMENT	4/30/2022	16:45	12	5	70	107	220 BBLS LEAD CEMENT PUMPED
12	TAIL CEMENT	4/30/2022	17:02	12.5	4	64	73	TAIL 161 SKS/64 BBLS AT 12.5 PPG
13	SHUTDOWN	4/30/2022	17:16					SHUTDOWN, DROP PLUG
14	DISPLACEMENT	4/30/2022	17:18	8.34	5	50	25	DISPLACEMENT WATER
15	DISPLACEMENT	4/30/2022	17:29	8.34	7	50	285	100 BBLS DISPLACEMENT PUMPED
16	DISPLACEMENT	4/30/2022	17:37	8.34	7	50	483	150 BBLS DISPLACEMENT PUMPED
17	DISPLACEMENT	4/30/2022	17:44	8.34	7	59	647	209 BBLS DISPLACEMENT PUMPED
18	SLOW RATE	4/30/2022	17:52	8.34	3.5	10	375	SLOW RATE
19	LAND PLUG	4/30/2022	17:55				1007	LAND PLUG, NO RETURNS
20	CHECK FLOATS	4/30/2022	17:56					FLOATS HELD, 1 BBL FLOW BACK
21	PARASITE	4/30/2022	17:59	8.34	1.5	10	599	SUGAR WATER THROUGH PARASITE, BROKE AT 599 PSI
22	OTHER	4/30/2022	18:08					DROP DV TOOL OPENING DEVICE
23	DV TOOL	4/30/2022	18:16	8.34	5	20	601	OPEN DV TOOL AT 601 PSI
24	OTHER	4/30/2022	18:25					SWAP TO RIG
53	PUMP SPACER	4/30/2022	18:55	8.34	5	40	41	2ND STG WATER SPACER
54	PUMP CEMENT	4/30/2022	19:04	12	5	50	103	2ND STG 379 SKS/172 BBLS AT 12 PPG
55	PUMP CEMENT	4/30/2022	19:14	12	5	50	105	100 BBLS CEMENT PUMPED
56	PUMP CEMENT	4/30/2022	19:25	12	5	72	107	172 BBLS CEMENT PUMPED
57	SHUTDOWN	4/30/2022	19:45					SHUTDOWN, DROP CLOSING PLUG
58	DISPLACEMENT	4/30/2022	19:47	8.34	5	42	37	DISPLACEMENT WATER
59	SLOW RATE	4/30/2022	19:57	8.34	4	20	29	SLOW RATE
60	LAND PLUG	4/30/2022	20:00				1681	LAND PLUG, NO RETURNS
61	CHECK FLOATS	4/30/2022	20:02					DV TOOL DID NOT CLOSE
62	RE-BUMP	4/30/2022	20:04				1701	RE-BUMP PLUG
63	CHECK FLOATS	4/30/2022	20:06					DV TOOL CLOSED
64	OTHER	4/30/2022	20:10					GET READY TO CEMENT PARASITE LINES
65	CEMENT PARASITES	4/30/2022	21:07	15.8	1	15	71	74 SKS/15 BBLS AT 15.8 PPG
66	SHUTDOWN	4/30/2002	21:40					GET READY TO TOPOUT FED 25A-35
67	TOPOUT	4/30/2022	22:53	12.5	3	47	32	119 SKS/47 BBLS TOPOUT AT 12.5 PPG
68	SHUTDOWN	4/30/2022	23:10					SHUTDOWN, WASH UP
69	TOPOUT	5/1/2022	01:07	15.8	2	67	51	326 SKS/67 BBLS AT 15.8 PPG
70	SHUTDOWN	5/1/2022	01:43					SHUTDOWN, WASH UP
71	TOPOUT	5/1/2022	04:20	15.8	2	63	41	200 SKS/41 BBLS AT 15.8 PPG
72	SHUTDOWN	5/1/2022	04:38					SHUTDOWN, WASH UP
73	TOPOUT	5/1/2022	11:10	15.8	2.5	24	57	119 SKS/24 BBLS AT 15.8 PPG
74	SHUTDOWN	5/1/2022	11:25					SHUTDOWN, WASH UP
75	TOPOUT	5/1/2022	13:35	15.6	2	29	61	136 SKS/29 BBLS AT 15.6 PPG WITH 3 BBLS MIXED LEFT IN THE SYSTEM
76	SHUTDOWN	5/1/2022	14:05					SHUTDOWN, WASH UP
77	RIG DOWN	5/1/2022	14:30					RIG DOWN MEETING, RIG DOWN
78	LEAVE LOCATION	5/1/2022	15:30					CREW LEAVE LOCATION

Pump Diagrams



JobMaster Program Version 5.01C1
Job Number: 81256
Customer: CAERUS
Well Name: FED 25A-35

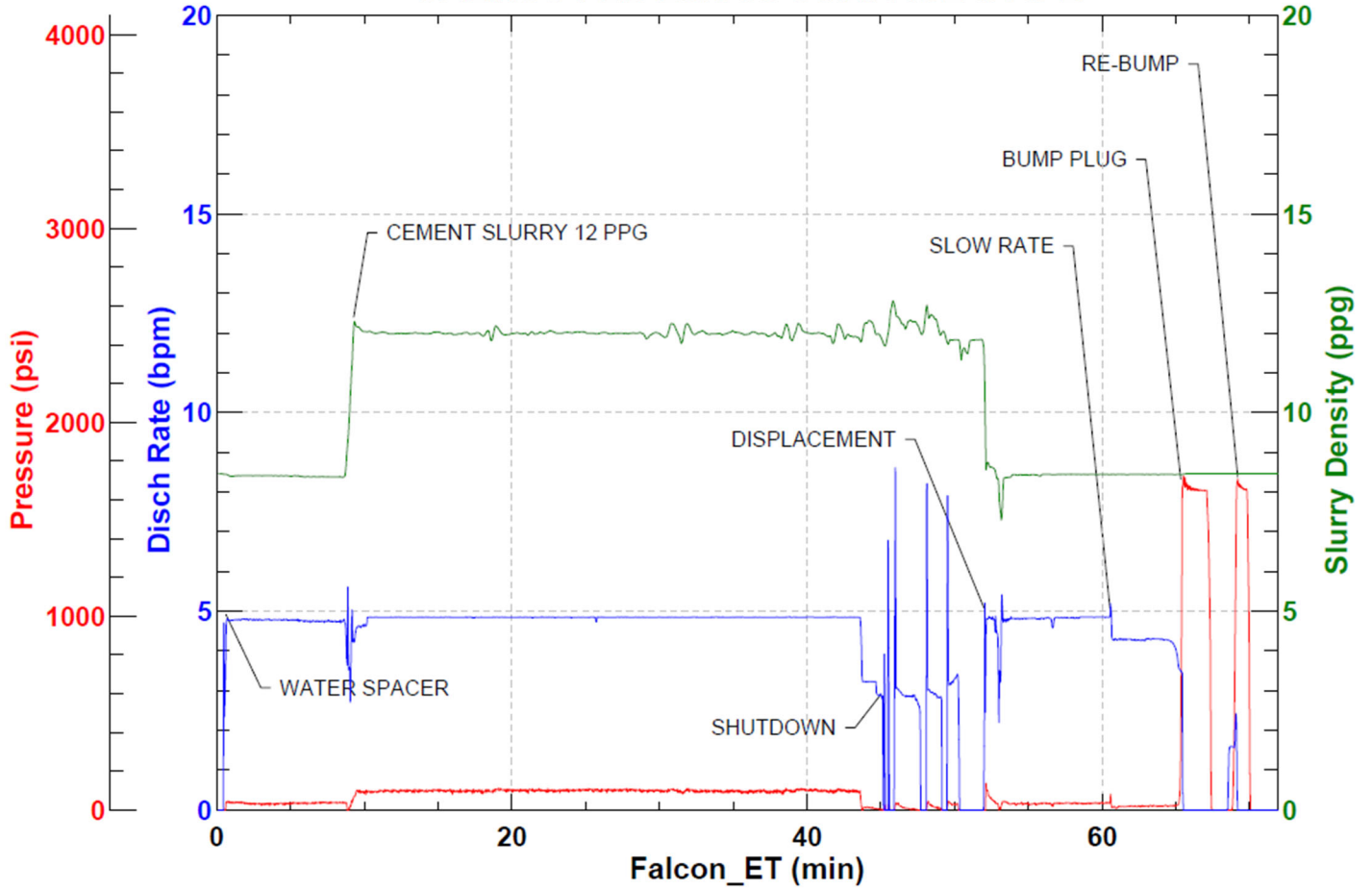
CAERUS FED 25A-35 SURFACE STG-1



Job Start: Saturday, April 30, 2022

Stage-1

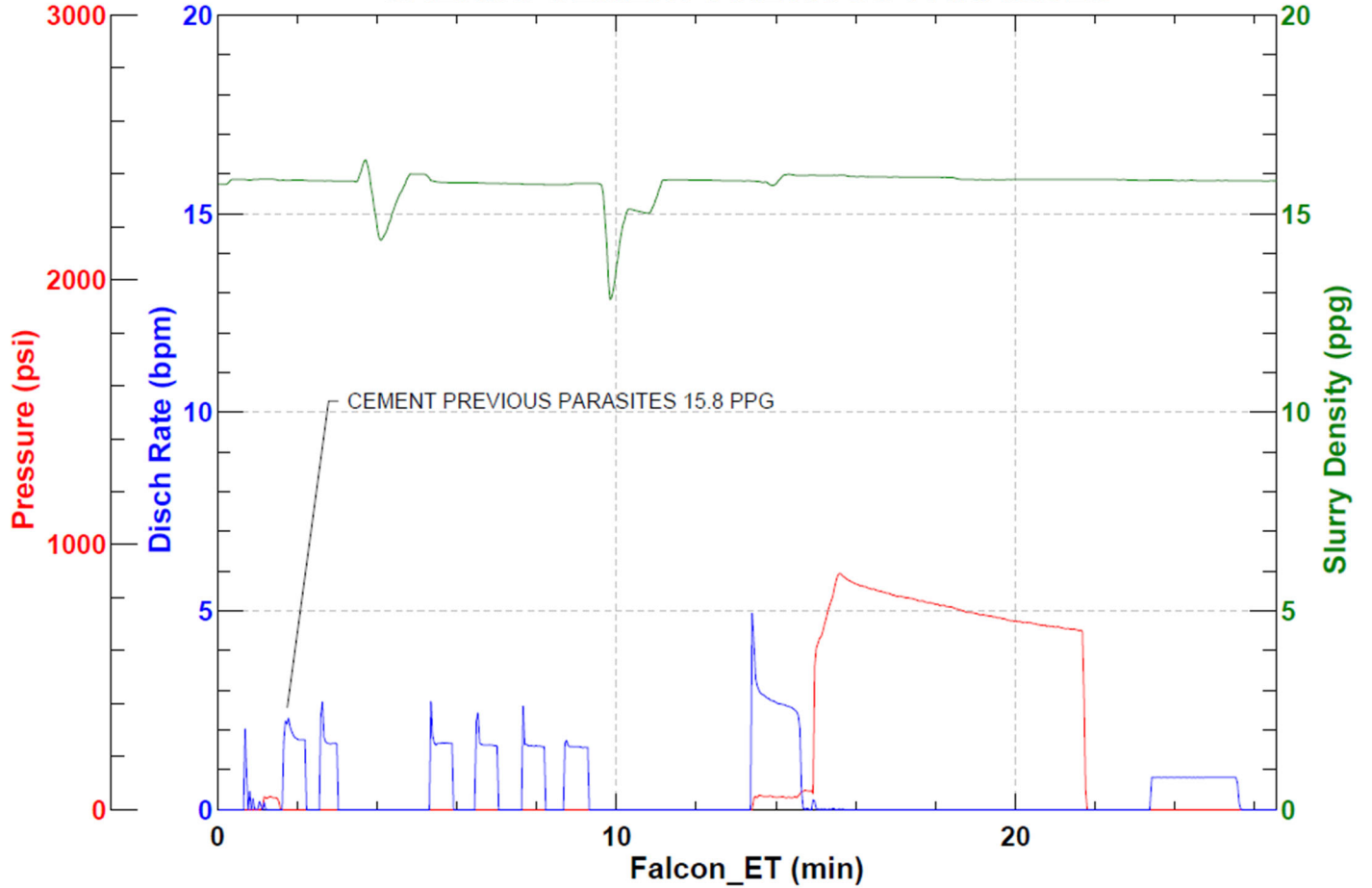
CAERUS FED 25A-35 SURFACE STG-2



Job Start: Saturday, April 30, 2022

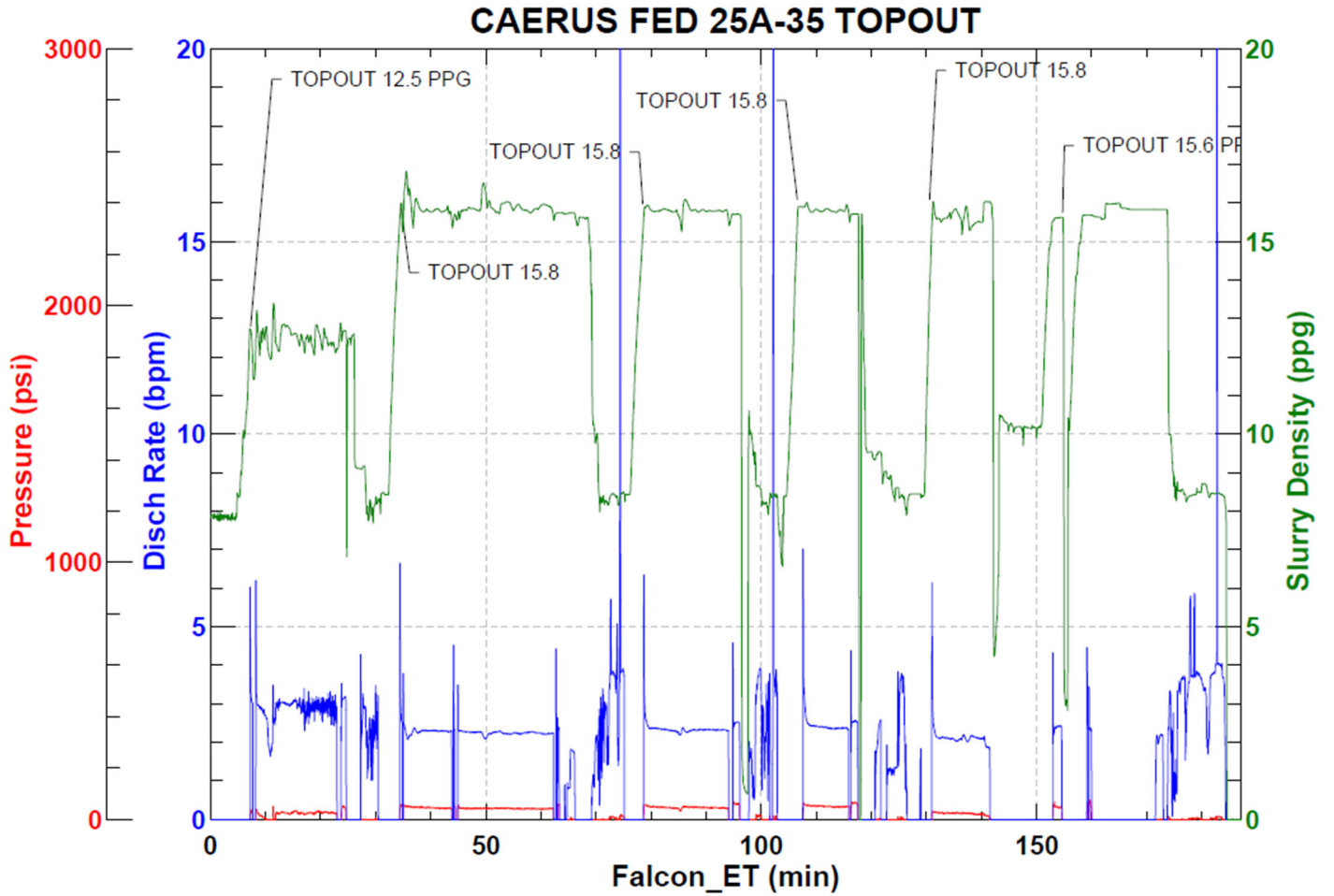
Stage-2

CAERUS CEMENT PREVIOUS PARASITES



Job Start: Saturday, April 30, 2022

Parasite Lines Cement



Job Start: Saturday, April 30, 2022

Top Out