



Caerus Operating LLC

LONG STRING POST JOB REPORT

BJU G35 FED #25B-35-496 05-045-24346
S:35 T:4S R:96W Garfield CO

CallSheet #: 81203
Proposal #: 59226



LONG STRING Post Job Report

Attention: Mr. Cole Walton | (720) 880-6325 | cwalton@caerusoilandgas.com

Caerus Operating LLC

1001 17TH STREET | DENVER, CO 80202

Dear Mr. Cole Walton,

Thank you for the opportunity to provide cementing services on this well. American Cementing strives to achieve complete customer satisfaction. If you have any questions regarding the services or data provided, please contact American Cementing at any time.

Sincerely,

Zen Keith

SME | (307) 757-7178 | zen.keith@americacementing.com

Field Office 28730 US-6, Rifle, CO 81650
Phone: (970) 657-1157

Job Details & Summary

Geometry

Type	Function	OD (in)	ID (in)	Weight (lb/ft)	Thread	Top (ft)	Bottom (ft)	Excess (%)
Casing	Outer	9.625	8.921	36	n/a	0	3011	0
Open Hole	Outer	n/a	8.75	n/a	n/a	3000	6953	25
Open Hole	Outer	n/a	8.75	n/a	n/a	6953	12046	0
Casing	Inner	4.5	4	11.6	n/a	0	12031.2	0

Equipment / People

Unit Type	Unit	Power Unit	Employee #1	Employee #2
Field Storage Silo	FSS(CTS)-468			
Field Storage Silo	FSS(CTS)-469			
AS Cement Trailer Float	CTF-138	TRB-421		
AS Cement Trailer Float	CTF-019	TRC(TRB)-195		
AS Cement Trailer Float	CTF-9898	TRH(TRB)-769		
AS Cement Trailer Float	CTF-9309	TRC(TRB)-201		
Cement Trailer Float	CTF-340	TRC(TRB)-425	Carrasco, Joel	Wall, Lynn
Light Duty Vehicles	LDV-063		Castillo, Francisco	
Cement Pump Float	CPF-011	TRH-959	Hale, Jason	

Timing

Event	Date/Time
Call Out	4/27/2022 11:00
Depart Facility	4/27/2022 12:55
On Location	4/27/2022 14:00
Rig Up Iron	4/27/2022 17:00
Job Started	4/27/2022 20:54
Job Completed	4/27/2022 23:33
Rig Down Iron	4/27/2022 23:45
Depart Location	4/28/2022 01:00

General Job Information

Metrics	Value
Well Fluid Density	10.5 lb/gal
Well Fluid Type	WBM
Rig Circulation Vol	1800 bbls
Rig Circulation Time	3 hours
Calculated Displacement	185 bbls
Actual Displacement	185 bbls
Total Spacer to Surface	0 bbls
Total CMT to Surface	0 bbls
Well Topped Out	N/A

Job Details

Metrics	Value
Flare Prior to Job	No
Flare Prior to Job	0 units
Flare During Job	No
Flare During Job	0 units
Flare at End of Job	No
Flare at End of Job	0 units
Well Full Prior to Job	Yes
Well Fluid Density Into Well	10.5 lb/gal
Well Fluid Density Out of Well	10.5 lb/gal

Job Details (cont.)

Metrics	Value
BHCT	207 °F
BHST	271 °F

Water Analysis

Metrics	Value	Recommended
Water Source	Upright Rig Tank	
Temperature	67 °F	50-80 °F
pH Level	7	5.5-8.5
Chlorides	0 mg/L	0-3000 mg/L
Total Alkalinity	240	0-1000
Total Hardness	250 mg/L	0-500 mg/L
Carbonates	0 mg/L	0-100 mg/L
Sulfates	200 mg/L	0-1500 mg/L
Potassium	250 mg/L	0-3000 mg/L
Iron	0 mg/L	0-300 mg/L

Circulation

Lost Circulation Experienced	Losses into Spacer	Losses into Cement	Losses into Displacement
Yes	N/A	N/A	N/A

Circulation Details

GOT RETURNS 60 BBLs INTO SCAVENGER. LOST RETURNS AFTER SHUTTING PARASITE AIR AT 100 BBLs INTO TAIL.

Job Execution Information

Fluid	Product	Function	Density (lb/gal)	Yield (ft ³ /sk)	Water Rq. (gal/sk)	Water Rq. (gal/bbl)	Volume (sks)	Volume (bbl)	Designed Top (ft)
1	Mud Flush	Flush	8.45			40.86		20.00	658
2	Scav Cement	Scavenger	11.50	2.76	16.68		235.00	115.48	1005
3	Lead Cement	Lead	12.70	2.00	11.00		759.00	270.64	3000
4	Tail Cement	Tail	13.50	2.00	9.66		802.00	285.20	6953
5	Water + KCL Sub	DisplacementFinal	8.34			42.00		185.00	0

Job Fluid Details

Fluid	Type	Fluid	Product	Function	Conc.	Uom
1	Flush	Mud Flush	SAPP	Surfactant	10.00	lb/bbl
1	Flush	Mud Flush	SS-201	Surfactant	0.50	gal/bbl
2	Scavenger	Scav Cement	ASTM TYPE III	Cement	100.00	%
2	Scavenger	Scav Cement	BA-60	GasMigration	0.30	%BWOB
2	Scavenger	Scav Cement	FP-24	Defoamer	0.30	%BWOB
2	Scavenger	Scav Cement	GW-86	Viscosifier	0.20	%BWOB
2	Scavenger	Scav Cement	IntegraSeal PHENO	LostCirculation	3.00	lb/sk
2	Scavenger	Scav Cement	R-3	Retarder	0.50	%BWOB
3	Lead	Lead Cement	ASTM TYPE I/II	Cement	100.00	%
3	Lead	Lead Cement	BA-60	GasMigration	0.30	%BWOB
3	Lead	Lead Cement	FL-66	FluidLoss	0.50	%BWOB
3	Lead	Lead Cement	FP-24	Defoamer	0.30	%BWOB
3	Lead	Lead Cement	GW-86	Viscosifier	0.10	%BWOB
3	Lead	Lead Cement	IntegraSeal PHENO	LostCirculation	3.00	lb/sk
3	Lead	Lead Cement	R-3	Retarder	0.30	%BWOB
3	Lead	Lead Cement	STATIC FREE	Other	0.01	lb/sk
4	Tail	Tail Cement	CLASS G	Cement	70.00	%
4	Tail	Tail Cement	FLY ASH (POZZOLAN)	Extender	30.00	%
4	Tail	Tail Cement	BA-60	GasMigration	0.20	%BWOB
4	Tail	Tail Cement	BENTONITE	Viscosifier	8.00	%BWOB
4	Tail	Tail Cement	FL-24	FluidLoss	0.40	%BWOB
4	Tail	Tail Cement	FP-24	Defoamer	0.30	%BWOB
4	Tail	Tail Cement	IntegraSeal PHENO	LostCirculation	3.00	lb/sk
4	Tail	Tail Cement	R-3	Retarder	0.25	%BWOB
4	Tail	Tail Cement	S-8	StrengthRetrogression	25.00	%BWOB

Job Logs

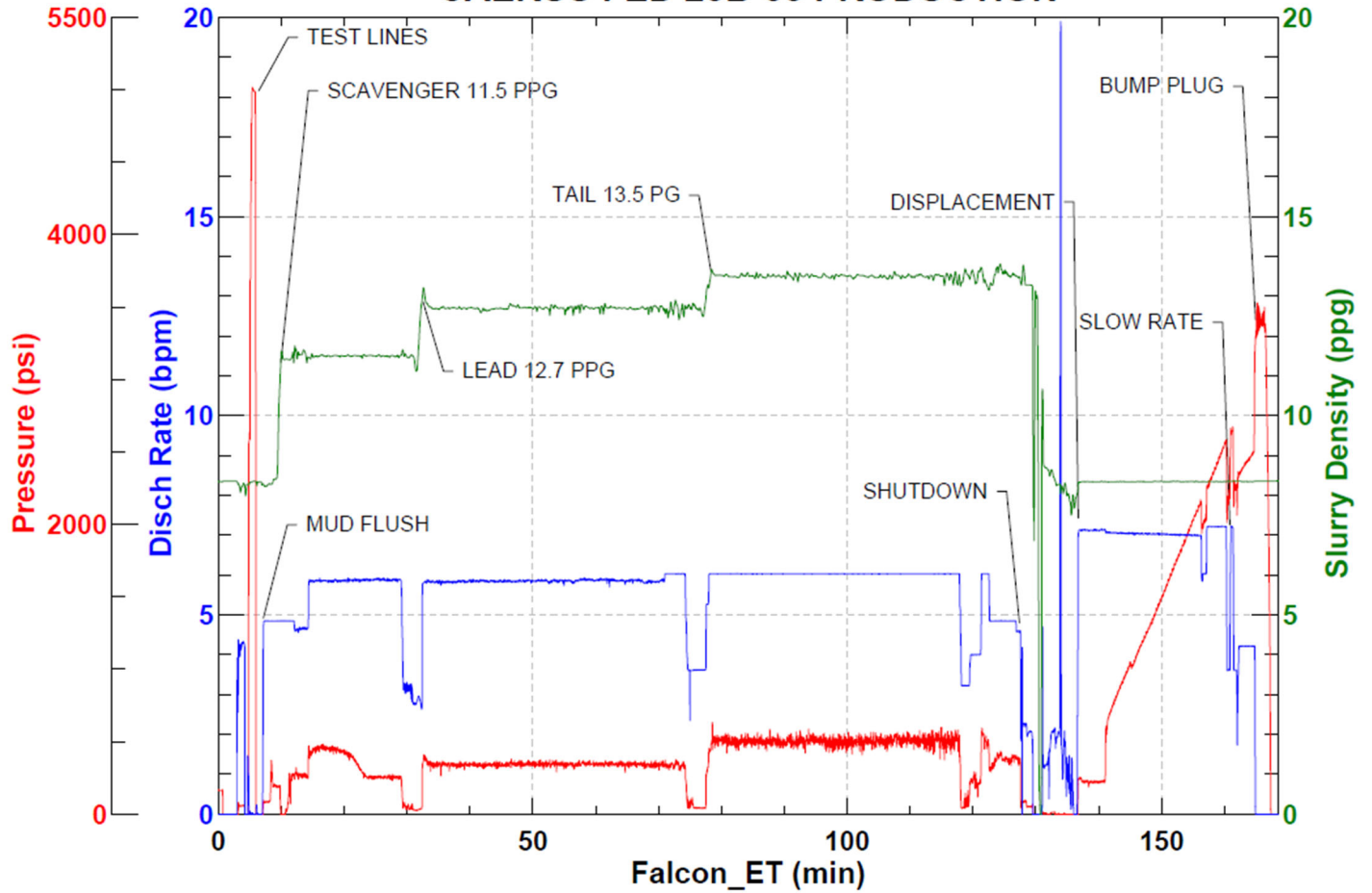
Line	Event	Date (MM/DD/YY)	Time (HH:MM)	Density (lb/gal)	Pump Rate (bpm)	Pump Volume (bbls)	Pipe Pressure (psi)	Comment
1	CALLOUT	4/27/2022	11:00					ON LOCATION AT 15:00 HRS
2	LEAVE YARD	4/27/2022	12:55					PUMP AND FIELD LEADER LEAVE YARD
3	ON LOCATION	4/27/2022	14:00					ON LOCATION, WAITING ON CEMENT
4	RIG UP	4/27/2022	17:00					RIG UP MEETING, RIG UP
5	ON LOCATION	4/27/2022	20:15					JOB BULK TRUCK ON LOCATION
6	SAFETY MEETING	4/27/2022	20:30					PRE-JOB SAFETY MEETING
7	PRESSURE TEST	4/27/2022	20:52				5015	PRESSURE TEST LINES
8	PUMP SPACER	4/27/2022	20:54	9	5	20	169	MUD FLUSH SPACER
9	SCAVENGER	4/27/2022	20:59	11.5	6	58	43	SCAV 235 SKS/116 BBLS AT 11.5 PPG
10	SCAVENGER	4/27/2022	21:08	11.5	6	58	223	116 BBLS SCAVENGER PUMPED, GOT RETURNS 60 BBLS INTO SCAVENGER
11	LEAD CEMENT	4/27/2022	21:18	12.7	6	50	349	LEAD 759 SKS/270 BBLS AT 12.7 PPG
12	LEAD CEMENT	4/27/2022	21:28	12.7	6	50	353	100 BBLS LEAD CEMENT PUMPED
13	LEAD CEMENT	4/27/2022	21:36	12.7	6	50	361	150 BBLS LEAD CEMENT PUMPED
14	LEAD CEMENT	4/27/2022	21:45	12.7	6	50	355	200 BBLS LEAD CEMENT PUMPED
15	LEAD CEMENT	4/27/2022	21:53	12.7	6	70	341	270 BBLS LEAD CEMENT PUMPED
16	TAIL CEMENT	4/27/2022	22:05	13.5	6	50	563	TAIL 802 SKS/285 BBLS AT 13.5 PPG
17	TAIL CEMENT	4/27/2022	22:13	13.5	6	50	531	100 BBLS TAIL CEMENT PUMPED, SHUT PARASITE AIR
18	TAIL CEMENT	4/27/2022	22:21	13.5	6	50	527	150 BBLS TAIL CEMENT PUMPED
19	TAIL CEMENT	4/27/2022	22:30	13.5	6	50	541	200 BBLS TAIL CEMENT PUMPED
20	TAIL CEMENT	4/27/2022	22:38	13.5	6	85	515	285 BBLS TAIL CEMENT PUMPED
21	SHUTDOWN	4/27/2022	22:57					WASH PUMP AND LINES
22	DISPLACEMENT	4/27/2022	23:04	8.34	7	50	915	DISPLACEMENT WATER + RESCARE
23	DISPLACEMENT	4/27/2022	23:11	8.34	7	50	1659	100 BBLS DISPLACEMENT PUMPED
24	DISPLACEMENT	4/27/2022	23:19	8.34	7	75	2647	175 BBLS DISPLACEMENT PUMPED
25	SLOW RATE	4/27/2022	23:30	8.34	4	10	2505	SLOW RATE
26	LAND PLUG	4/27/2022	23:33					LAND PLUG, LOST RETURNS AFTER SHUTTING PARASITE AIR
27	CHECK FLOATS	4/27/2022	23:35					FLOATS HELD, 2.5 BBLS FLOW BACK
28	RIG DOWN	4/27/2022	23:45					RIG DOWN MEETING, RIG DOWN
29	LEAVE LOCATION	4/28/2022	01:00					CREW LEAVE LOCATION
30	OTHER	4/28/2022	01:01					515 BBLS MUD BACK TO SURFACE

Pump Diagrams



JobMaster Program Version 5.01C1
 Job Number: 81203
 Customer: CAERUS
 Well Name: FED 25B-35

CAERUS FED 25B-35 PRODUCTION



Job Start: Wednesday, April 27, 2022