



Caerus Operating LLC

LONG STRING POST JOB REPORT

BJU G35 FED #15A-35-496 05-045-24333
S:35 T:4S R:96W Garfield CO

CallSheet #: 81062
Proposal #: 59224



LONG STRING Post Job Report

Attention: Mr. Cole Walton | (720) 880-6325 | cwalton@caerusoilandgas.com

Caerus Operating LLC

1001 17TH STREET | DENVER, CO 80202

Dear Mr. Cole Walton,

Thank you for the opportunity to provide cementing services on this well. American Cementing strives to achieve complete customer satisfaction. If you have any questions regarding the services or data provided, please contact American Cementing at any time.

Sincerely,

Michael Harold

Field Engineer II | (970) 773-3636 | michael.harold@americacementing.com

Field Office 28730 US-6, Rifle, CO 81650
Phone: (970) 657-1157

Job Details & Summary

Geometry

Type	Function	OD (in)	ID (in)	Weight (lb/ft)	Thread	Top (ft)	Bottom (ft)	Excess (%)
Casing	Outer	9.625	8.921	36	n/a	0	3004	0
Open Hole	Outer	n/a	8.75	n/a	n/a	3004	6886	25
Open Hole	Outer	n/a	8.75	n/a	n/a	6886	12051	0
Casing	Inner	4.5	4	11.6	n/a	0	12031.2	0

Equipment / People

Unit Type	Unit	Power Unit	Employee #1	Employee #2
AS Cement Trailer	CTF-138			
AS Cement Trailer	CTF-9299			
AS Cement Trailer	CTF-9309			
AS Cement Trailer	CTF-7145			
Field Storage Silo	FSS(CTS)-469			
Field Storage Silo	FSS(CTS)-468			
Cement Trailer	CTF-273	TRC(TRB)-188	Bonin, Matthew	Manuelito, Hamilton
Light Duty Vehicles	LDV-082		Kelsey, John	
Cement Pump	CPF-011		Hale, Jason	

Timing

Event	Date/Time
Call Out	4/19/2022 05:00
Depart Facility	4/19/2022 06:45
On Location	4/19/2022 08:00
Rig Up Iron	4/19/2022 08:20
Job Started	4/19/2022 13:16
Job Completed	4/19/2022 16:31
Rig Down Iron	4/19/2022 16:35
Depart Location	4/19/2022 18:00

General Job Information

Metrics	Value
Well Fluid Density	10.1 lb/gal
Well Fluid Type	WBM
Rig Circulation Vol	1750 bbls
Rig Circulation Time	2 hours
Calculated Displacement	185.2 bbls
Actual Displacement	185.2 bbls
Total Spacer to Surface	0 bbls
Total CMT to Surface	0 bbls
Well Topped Out	N/A

Job Details

Metrics	Value
Flare Prior to Job	No
Flare Prior to Job	0 units
Flare During Job	No
Flare During Job	0 units
Flare at End of Job	No
Flare at End of Job	0 units
Well Full Prior to Job	Yes
Well Fluid Density Into Well	10.1 lb/gal
Well Fluid Density Out of Well	10.2 lb/gal

Job Details (cont.)

Metrics	Value
BHCT	207 °F
BHST	271 °F

Water Analysis

Metrics	Value	Recommended
Water Source	Upright Rig Tank	
Temperature	50 °F	50-80 °F
pH Level	7	5.5-8.5
Chlorides	0 mg/L	0-3000 mg/L
Total Alkalinity	80	0-1000
Total Hardness	>450 mg/L	0-500 mg/L
Carbonates	0 mg/L	0-100 mg/L
Sulfates	<200 mg/L	0-1500 mg/L
Potassium	0 mg/L	0-3000 mg/L
Iron	0 mg/L	0-300 mg/L

Circulation

Lost Circulation Experienced	Losses into Spacer	Losses into Cement	Losses into Displacement
Yes	0	500	0

Circulation Details

No returns upon startup, began parasite air @ the start of mud flush, Received returns starting at 50 bbls away on scavenger cement. Shut down Parasite air @ 100 bbls away on Tail cement. Lost returns @ 121 BBLS away on Tail cement for te remainder of the job.

Job Execution Information

Fluid	Product	Function	Density (lb/gal)	Yield (ft ³ /sk)	Water Rq. (gal/sk)	Water Rq. (gal/bbl)	Volume (sks)	Volume (bbl)	Designed Top (ft)
1	Mud Flush	Flush	8.45			40.86		20.00	658
2	Scav Cement	Scavenger	11.50	2.76	16.68		235.00	115.48	1005
3	Lead Cement	Lead	12.70	2.00	11.00		745.00	265.64	3000
4	Tail Cement	Tail	13.50	2.00	9.66		803.00	285.55	6882
5	Water + KCL Sub	DisplacementFinal	8.34			42.00		185.20	0

Job Fluid Details

Fluid	Type	Fluid	Product	Function	Conc.	Uom
1	Flush	Mud Flush	SAPP	Surfactant	10.00	lb/bbl
1	Flush	Mud Flush	SS-201	Surfactant	0.50	gal/bbl
2	Scavenger	Scav Cement	ASTM TYPE I/II	Cement	100.00	%
2	Scavenger	Scav Cement	BA-60	GasMigration	0.30	%BWOB
2	Scavenger	Scav Cement	FP-24	Defoamer	0.30	%BWOB
2	Scavenger	Scav Cement	GW-86	Viscosifier	0.20	%BWOB
2	Scavenger	Scav Cement	IntegraSeal PHENO	LostCirculation	3.00	lb/sk
2	Scavenger	Scav Cement	R-3	Retarder	0.50	%BWOB
2	Scavenger	Scav Cement	STATIC FREE	Other	0.01	lb/sk
3	Lead	Lead Cement	ASTM TYPE I/II	Cement	100.00	%
3	Lead	Lead Cement	BA-60	GasMigration	0.30	%BWOB
3	Lead	Lead Cement	FL-66	FluidLoss	0.50	%BWOB
3	Lead	Lead Cement	FP-24	Defoamer	0.30	%BWOB
3	Lead	Lead Cement	GW-86	Viscosifier	0.10	%BWOB
3	Lead	Lead Cement	IntegraSeal PHENO	LostCirculation	3.00	lb/sk
3	Lead	Lead Cement	R-3	Retarder	0.30	%BWOB
3	Lead	Lead Cement	STATIC FREE	Other	0.01	lb/sk
4	Tail	Tail Cement	CLASS G	Cement	70.00	%
4	Tail	Tail Cement	FLY ASH (POZZOLAN)	Extender	30.00	%
4	Tail	Tail Cement	BA-60	GasMigration	0.20	%BWOB
4	Tail	Tail Cement	BENTONITE	Viscosifier	8.00	%BWOB
4	Tail	Tail Cement	FL-24	FluidLoss	0.40	%BWOB
4	Tail	Tail Cement	FP-24	Defoamer	0.30	%BWOB
4	Tail	Tail Cement	IntegraSeal PHENO	LostCirculation	3.00	lb/sk
4	Tail	Tail Cement	R-3	Retarder	0.25	%BWOB
4	Tail	Tail Cement	S-8	StrengthRetrogression	25.00	%BWOB

Job Logs

Line	Event	Date (MM/DD/YY)	Time (HH:MM)	Density (lb/gal)	Pump Rate (bpm)	Pump Volume (bbls)	Pipe Pressure (psi)	Comment
1	Callout	4/19/2022	05:00					Crew called to prepare for a production cement job. RTS is 10:00
2	Safety Meeting	4/19/2022	06:30					Journey management meeting from yard to location
3	Depart Yard	4/19/2022	06:45					Depart Rifle, Co yard for location
4	Arrive on Location	4/19/2022	08:00					Arrive on location, verify all proper equipment and products are on location, verify job procedure with customer
5	Safety Meeting	4/19/2022	08:10					Rig up meeting
6	Spot Units	4/19/2022	08:15					Spot all equipment for rig up
7	Rig up	4/19/2022	08:20					Rig up all equipment
8	Standby	4/19/2022	09:00					Crew on standby while the rig runs casing
9	Safety Meeting	4/19/2022	13:00					Pre job meeting with all crews involved with the job.
10	Load Lines	4/19/2022	13:16	8.34	4	3	100	Load lines for pressure test, No Returns on well
11	Pressure Test	4/19/2022	13:18	8.34	1	1	5000	Pressure test pump and lines to cement head
12	Mud Flush	4/19/2022	13:22	8.4	4.8	20	164	20 BBLs Flush with Chemicals Began PARASITE at 1200 CFM as we started going downhole
13	Scavenger Cement	4/19/2022	13:27	11.5	4.8	10	266	115.5 BBLs Scav CMT – 11.5 # 2.76 Y 16.7 MW 235 sks 10 bbls away, weight verified
14	Scavenger Cement	4/19/2022	13:37	11.5	5	40	280	50 bbls away gained returns on well
15	Scavenger Cement	4/19/2022	13:47	11.5	5	50	291	100 bbls away
16	Scavenger Cement	4/19/2022	13:49	11.5	3	15	170	115 bbls away
17	Lead Cement	4/19/2022	13:50	12.7	5	10	300	240 BBLs Lead CMT – 12.7 # 2.0 Y 11 MW 745 sks 10 bbls away, weight verified
18	Lead Cement	4/19/2022	14:00	12.7	5	40	300	50 bbls away
19	Lead Cement	4/19/2022	14:10	12.7	5	50	300	100 bbls away
20	Lead Cement	4/19/2022	14:20	12.7	5	50	300	150 bbls away
21	Lead Cement	4/19/2022	14:31	12.7	5	50	300	200 bbls away
22	Lead Cement	4/19/2022	14:40	12.7	3	50	250	250 bbls away
23	Lead Cement	4/19/2022	14:42	12.7	3	15	250	265 bbls away Swap to Tail Cement
24	Tail Cement	4/19/2022	14:43	13.5	5	10	500	285 BBLs Tail CMT – 13.5 # 2.0 Y 9.7 MW 803 sks 10 bbls away, weight verified
25	Tail Cement	4/19/2022	14:53	13.5	5	40	500	50 bbls away
26	Tail Cement	4/19/2022	15:02	13.5	5	50	500	100 bbls away End PARASITE, and lose returns @ 121 bbls away
27	Tail Cement	4/19/2022	15:12	13.5	5	50	500	150 bbls away
28	Tail Cement	4/19/2022	15:22	13.5	5	50	500	200 bbls away, slow @ 220 bbls to 3BPM to drain silo, @ 250 away back to 5 BPM
29	Tail Cement	4/19/2022	15:43	13.5	3	85	200	285 bbls away, shutdown for washup and sending plug
30	Washup	4/19/2022	15:44					Washup pump and lines to pit, replace rubber on cement head cap and drop plug
31	Displacement	4/19/2022	16:00	8.34	6.8	10	300	Send plug and begin displacement 10 bbls away
32	Displacement	4/19/2022	16:08	8.34	6.8	40	600	50 bbls away
33	Displacement	4/19/2022	16:17	8.34	6.8	50	400	100 bbls away
34	Displacement	4/19/2022	16:24	8.34	6.8	50	1950	150 bbls away
35	Displacement	4/19/2022	16:26	8.34	6.8	10	1800	160 bbls away slow rate for bump

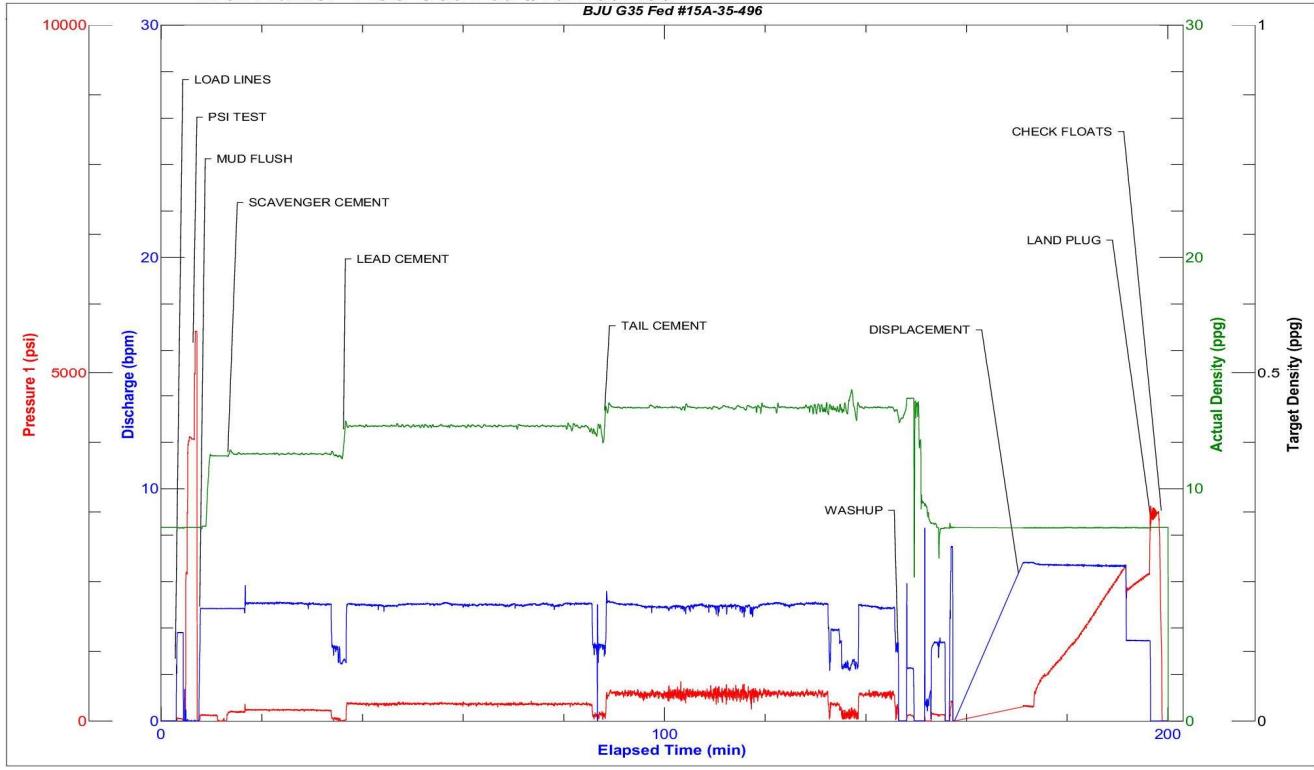


Line	Event	Date (MM/DD/YY)	Time (HH:MM)	Density (lb/gal)	Pump Rate (bpm)	Pump Volume (bbls)	Pipe Pressure (psi)	Comment
36	Land Plug	4/19/2022	16:29	8.34	3	25.2	2112	Land plug 185.2 bbls away
37	Check Floats	4/19/2022	16:31					Check floats, floats held, 2 bbls back on pressure release
38	Safety Meeting	4/19/2022	16:32					Rig Down meeting
39	Rig Down	4/19/2022	16:35					Rig down all equipment
40	Safety Meeting	4/19/2022	17:45					Journey management meeting from location to Yard
41	Depart Location	4/19/2022	18:00					Crew departs location
42	Information	4/19/2022	18:00					Estimated Top of Tail @ 6845' Estimated Top of Lead @ 2050' Estimated Top of Scavenger @ 53' ALL ON A GUAGED HOLE.

Pump Diagrams



JobMaster Program Version 5.01C1
Job Number: 81062
Customer: Cearus
Well Name: BJU G35 Fed #15A-35-496



BJ Services

Job Start: Tuesday, April 19, 2022