

BJU G35 FED 15A-35 496
Garfield County, CO
Q220327 & RM-220302

Company Name: Caerus Oil & Gas
BJU G35 FED 15A-35 496
Garfield County, CO
Rig: H&P #330
Created By: Will Jircik
Date: 15:14, April 18 2022

WELL DETAILS: BJU G35 FED 15A-35 496

| | | | | | |
|-------|-------|-------------|------------|-----------|-------------|
| +N/-S | +E/-W | Northing | Easting | Latitude | Longitude |
| 0.0 | 0.0 | 14415240.80 | 2447097.80 | 39.660317 | -108.133971 |

PROJECT DETAILS: Garfield County, CO

System Datum: Universal Transverse Mercator (US Survey Feet)
Datum: NAD 1927 - Western US
Ellipsoid: Clarke 1866
Zone: Zone 12N (114 W to 108 W)
Geodetic System: Mean Sea Level

DESIGN TARGET DETAILS

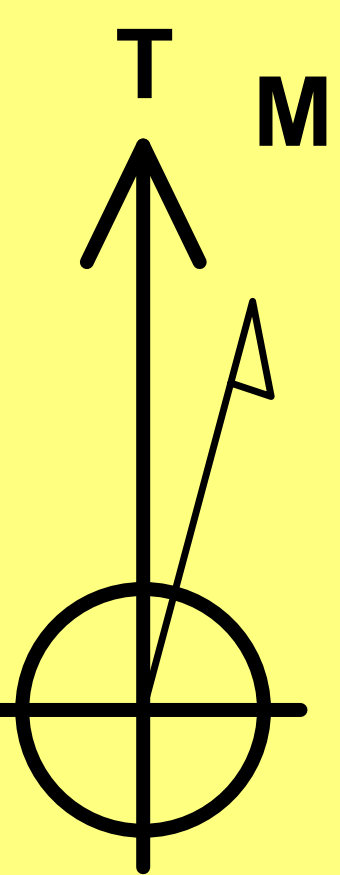
| Name | TVD | +N/-S | +E/-W | Northing | Easting | Latitude | Longitude |
|---------------|---------|---------|---------|-------------|------------|-----------|-------------|
| 15A-35 - OHCR | 7786.0 | -2263.2 | -1582.1 | 14412928.23 | 2445588.77 | 39.654106 | -108.139588 |
| 15A-35 - PBLH | 11545.0 | -2333.9 | -1652.2 | 14412855.30 | 2445521.00 | 39.653912 | -108.139836 |

DESIGN ANNOTATIONS

| MD | Inc | Azi | TVD | +N/-S | +E/-W | VSec | Departure | Annotation |
|---------|-------|--------|---------|---------|---------|--------|-----------|--|
| 118.0 | 1.00 | 46.44 | 118.0 | 1.3 | 0.6 | -1.4 | 0.0 | Conductor Tie in |
| 184.3 | 1.00 | 214.95 | 184.3 | 1.3 | 0.7 | -1.4 | 0.9 | Build 3' / 100' |
| 250.0 | 1.00 | 214.95 | 250.0 | 0.3 | 0.0 | -0.3 | 2.1 | EOB @ 1.00° Inc. / 214.95° Azm / Build 3' / 100' |
| 951.0 | 22.03 | 214.95 | 933.0 | -113.7 | -79.7 | 138.9 | 141.2 | EOB @ 22.03° Inc. / 214.95° Azm |
| 7570.9 | 22.03 | 214.95 | 7089.6 | -2148.9 | -1502.2 | 2621.9 | 2624.3 | Drop 3' / 100' |
| 8305.3 | 0.00 | 0.00 | 7786.0 | -2263.2 | -1582.1 | 2761.3 | 2763.7 | EOD @ Vertical / Build 1.5° / 100' |
| 8407.8 | 1.54 | 224.73 | 7888.5 | -2264.2 | -1583.1 | 2762.7 | 2765.1 | EOB @ 1.54° Inc. / 224.73° Azm |
| 12065.6 | 1.54 | 224.73 | 11545.0 | -2333.9 | -1652.2 | 2859.5 | 2863.3 | TD @ 12065.6' MD / 11545.0' TVD |

FORMATION TOP DETAILS

| TVDPath | MDPath | Formation |
|---------|---------|---------------|
| 2451.0 | 2589.5 | Wasatch |
| 5451.0 | 5824.8 | Wasatch G |
| 5796.0 | 6197.0 | Fort Union |
| 7786.0 | 8305.3 | Ohio Creek |
| 7786.0 | 8305.3 | TOG |
| 8031.0 | 8550.3 | Williams Fork |
| 10732.0 | 11252.3 | Cameo |
| 11345.0 | 11865.5 | Rollins |

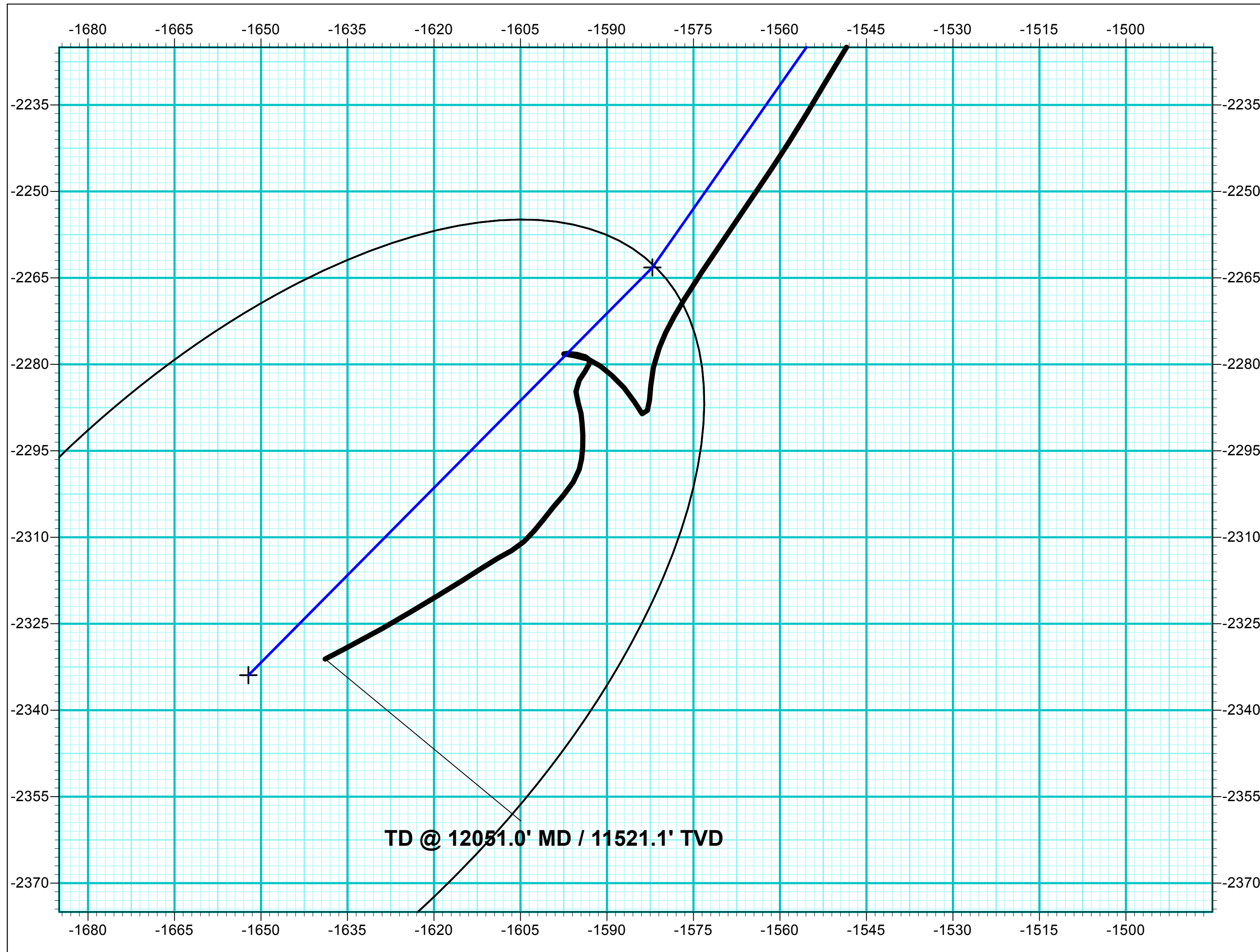
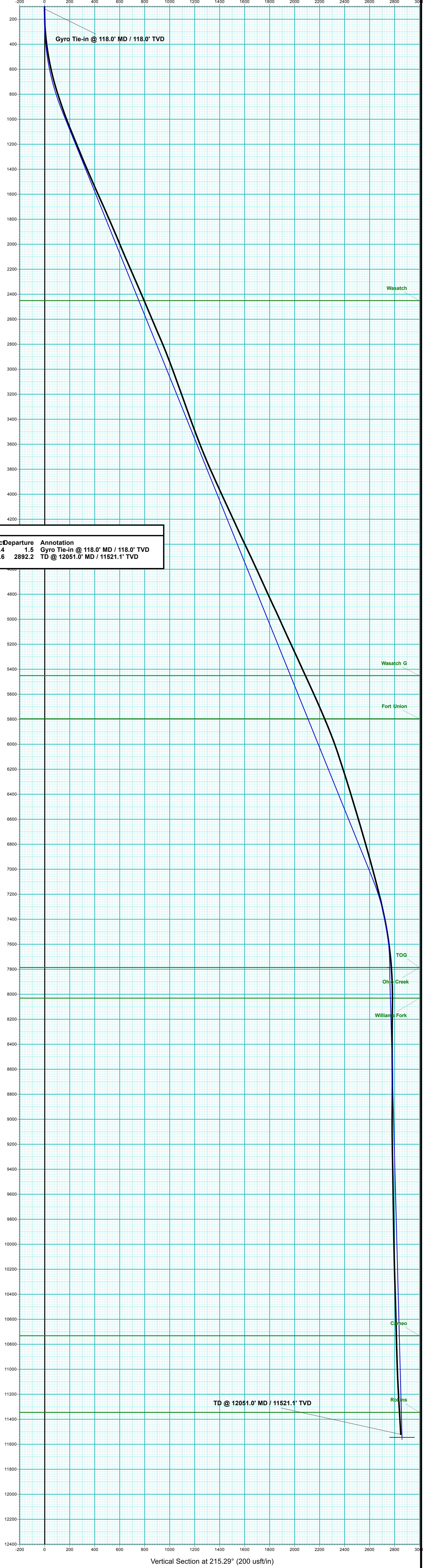


Azimuths to True North
Magnetic North: 9.23°

Strength: 51096.7nT
Dip Angle: 65.72°
Date: 4/10/2022
Model: HDGM2022

ANNOTATIONS

| MD | Inc | Azi | TVD | +N/-S | +E/-W | VSec | Departure | Annotation |
|---------|------|--------|---------|---------|---------|--------|-----------|--------------------------------------|
| 118.0 | 1.00 | 46.44 | 118.0 | 1.3 | 0.6 | -1.4 | 1.5 | Gyro Tie-in @ 118.0' MD / 118.0' TVD |
| 12051.0 | 3.60 | 242.50 | 11521.1 | -2331.1 | -1638.9 | 2849.6 | 2892.2 | TD @ 12051.0' MD / 11521.1' TVD |



DESIGN ANNOTATIONS

| MD | Inc | Azi | TVD | +N/-S | +E/-W | VSec | Departure | Annotation |
|---------|-------|--------|---------|---------|---------|--------|-----------|--|
| 118.0 | 1.00 | 46.44 | 118.0 | 1.3 | 0.6 | -1.4 | 0.0 | Conductor Tie in |
| 184.3 | 1.00 | 214.95 | 184.3 | 1.3 | 0.7 | -1.4 | 0.9 | Build 3' / 100' |
| 250.0 | 1.00 | 214.95 | 250.0 | 0.3 | 0.0 | -0.3 | 2.1 | EOB @ 1.00° Inc. / 214.95° Azm / Build 3' / 100' |
| 951.0 | 22.03 | 214.95 | 933.0 | -113.7 | -79.7 | 138.9 | 141.2 | EOB @ 22.03° Inc. / 214.95° Azm |
| 7570.9 | 22.03 | 214.95 | 7089.6 | -2148.9 | -1502.2 | 2621.9 | 2624.3 | Drop 3' / 100' |
| 8305.3 | 0.00 | 0.00 | 7786.0 | -2263.2 | -1582.1 | 2761.3 | 2763.7 | EOD @ Vertical / Build 1.5° / 100' |
| 8407.8 | 1.54 | 224.73 | 7888.5 | -2264.2 | -1583.1 | 2762.7 | 2765.1 | EOB @ 1.54° Inc. / 224.73° Azm |
| 12065.6 | 1.54 | 224.73 | 11545.0 | -2333.9 | -1652.2 | 2859.5 | 2863.3 | TD @ 12065.6' MD / 11545.0' TVD |



Vertical Section at 215.29° (200 usf/in)



Caerus Oil & Gas

Garfield County, CO

NPM G35 496 Pad

BJU G35 FED 15A-35 496 - Slot 15A-35

Wellbore #1

Design: Wellbore #1

KLX Survey Report

18 April, 2022



| | | | |
|------------------|------------------------|-------------------------------------|---|
| Company: | Caerus Oil & Gas | Local Co-ordinate Reference: | Well BJU G35 FED 15A-35 496 - Slot 15A-35 |
| Project: | Garfield County, CO | TVD Reference: | RKB @ 8194.0usft (H&P #330) |
| Site: | NPM G35 496 Pad | MD Reference: | RKB @ 8194.0usft (H&P #330) |
| Well: | BJU G35 FED 15A-35 496 | North Reference: | True |
| Wellbore: | Wellbore #1 | Survey Calculation Method: | Minimum Curvature |
| Design: | Wellbore #1 | Database: | EDM 5000.1 Single User Db |

| | | | |
|--------------------|--|----------------------|----------------|
| Project | Garfield County, CO | | |
| Map System: | Universal Transverse Mercator (US Survey Feet) | System Datum: | Mean Sea Level |
| Geo Datum: | NAD 1927 - Western US | | |
| Map Zone: | Zone 12N (114 W to 108 W) | | |

| | | | | | |
|------------------------------|-----------------|---------------------|--------------------|--------------------------|-------------|
| Site | NPM G35 496 Pad | | | | |
| Site Position: | | Northing: | 14,415,365.20 usft | Latitude: | 39.660667 |
| From: | Map | Easting: | 2,447,000.80 usft | Longitude: | -108.134301 |
| Position Uncertainty: | 0.0 usft | Slot Radius: | 13-3/16 " | Grid Convergence: | 1.83 ° |

| | | | | | | |
|-----------------------------|--------------------------------------|----------|----------------------------|--------------------|----------------------|--------------|
| Well | BJU G35 FED 15A-35 496 - Slot 15A-35 | | | | | |
| Well Position | +N/-S | 0.0 usft | Northing: | 14,415,240.80 usft | Latitude: | 39.660317 |
| | +E/-W | 0.0 usft | Easting: | 2,447,097.80 usft | Longitude: | -108.133971 |
| Position Uncertainty | | 0.0 usft | Wellhead Elevation: | usft | Ground Level: | 8,164.0 usft |

| | | | | | |
|------------------|-------------------|--------------------|------------------------|----------------------|----------------------------|
| Wellbore | Wellbore #1 | | | | |
| Magnetics | Model Name | Sample Date | Declination (°) | Dip Angle (°) | Field Strength (nT) |
| | HDGM2022 | 4/10/2022 | 9.23 | 65.72 | 51,096.70000000 |

| | | | | | |
|--------------------------|--------------------------------|---------------------|---------------------|----------------------|-----|
| Design | Wellbore #1 | | | | |
| Audit Notes: | | | | | |
| Version: | 1.0 | Phase: | ACTUAL | Tie On Depth: | 0.0 |
| Vertical Section: | Depth From (TVD) (usft) | +N/-S (usft) | +E/-W (usft) | Direction (°) | |
| | 0.0 | 0.0 | 0.0 | 215.11 | |

| | | | | | |
|-----------------------|------------------|--------------------------|------------------|-----------------------|--|
| Survey Program | Date | 4/18/2022 | | | |
| From (usft) | To (usft) | Survey (Wellbore) | Tool Name | Description | |
| 30.0 | 118.0 | Sfc Gyro (Wellbore #1) | GYRO-NS | OWSG Gyrocompass Gyro | |
| 245.0 | 12,051.0 | KLX MWD (Wellbore #1) | MWD | OWSG MWD - Standard | |

| | | | | | | | | | | |
|---|------------------------|--------------------|------------------------------|---------------------|---------------------|--------------------------------|--------------------------------|-------------------------------|------------------------------|--|
| Survey | | | | | | | | | | |
| Measured Depth (usft) | Inclination (°) | Azimuth (°) | Vertical Depth (usft) | +N/-S (usft) | +E/-W (usft) | Vertical Section (usft) | Dogleg Rate (°/100usft) | Build Rate (°/100usft) | Turn Rate (°/100usft) | |
| 0.0 | 0.00 | 0.00 | 0.0 | 0.0 | 0.0 | 0.0 | 0.00 | 0.00 | 0.00 | |
| 30.0 | 0.00 | 0.00 | 30.0 | 0.0 | 0.0 | 0.0 | 0.00 | 0.00 | 0.00 | |
| 60.0 | 1.26 | 15.87 | 60.0 | 0.3 | 0.1 | -0.3 | 4.20 | 4.20 | 0.00 | |
| 90.0 | 1.18 | 24.69 | 90.0 | 0.9 | 0.3 | -0.9 | 0.68 | -0.27 | 29.40 | |
| Gyro Tie-in @ 118.0' MD / 118.0' TVD | | | | | | | | | | |
| 118.0 | 1.00 | 46.44 | 118.0 | 1.3 | 0.6 | -1.4 | 1.60 | -0.64 | 77.68 | |
| 245.0 | 3.40 | 204.40 | 244.9 | -1.3 | -0.1 | 1.2 | 3.42 | 1.89 | 124.38 | |
| 336.0 | 5.60 | 212.30 | 335.6 | -7.5 | -3.6 | 8.3 | 2.51 | 2.42 | 8.68 | |
| 428.0 | 8.10 | 209.30 | 427.0 | -17.0 | -9.2 | 19.2 | 2.74 | 2.72 | -3.26 | |
| 520.0 | 10.40 | 216.70 | 517.8 | -29.3 | -17.3 | 33.9 | 2.81 | 2.50 | 8.04 | |

| | | | |
|------------------|------------------------|-------------------------------------|---|
| Company: | Caerus Oil & Gas | Local Co-ordinate Reference: | Well BJU G35 FED 15A-35 496 - Slot 15A-35 |
| Project: | Garfield County, CO | TVD Reference: | RKB @ 8194.0usft (H&P #330) |
| Site: | NPM G35 496 Pad | MD Reference: | RKB @ 8194.0usft (H&P #330) |
| Well: | BJU G35 FED 15A-35 496 | North Reference: | True |
| Wellbore: | Wellbore #1 | Survey Calculation Method: | Minimum Curvature |
| Design: | Wellbore #1 | Database: | EDM 5000.1 Single User Db |

| Survey | | | | | | | | | | |
|-----------------------|-----------------|-------------|-----------------------|--------------|--------------|-------------------------|-------------------------|------------------------|-----------------------|--|
| Measured Depth (usft) | Inclination (°) | Azimuth (°) | Vertical Depth (usft) | +N/-S (usft) | +E/-W (usft) | Vertical Section (usft) | Dogleg Rate (°/100usft) | Build Rate (°/100usft) | Turn Rate (°/100usft) | |
| 614.0 | 12.70 | 219.20 | 609.9 | -44.1 | -28.9 | 52.7 | 2.50 | 2.45 | 2.66 | |
| 709.0 | 15.30 | 218.50 | 702.0 | -62.0 | -43.3 | 75.7 | 2.74 | 2.74 | -0.74 | |
| 805.0 | 17.90 | 217.20 | 794.0 | -83.7 | -60.2 | 103.1 | 2.74 | 2.71 | -1.35 | |
| 898.0 | 18.90 | 216.00 | 882.3 | -107.2 | -77.7 | 132.4 | 1.15 | 1.08 | -1.29 | |
| 993.0 | 20.10 | 213.60 | 971.8 | -133.3 | -95.7 | 164.1 | 1.52 | 1.26 | -2.53 | |
| 1,087.0 | 22.00 | 212.30 | 1,059.5 | -161.6 | -114.1 | 197.8 | 2.08 | 2.02 | -1.38 | |
| 1,182.0 | 22.70 | 216.70 | 1,147.4 | -191.4 | -134.5 | 233.9 | 1.91 | 0.74 | 4.63 | |
| 1,277.0 | 22.00 | 215.60 | 1,235.3 | -220.5 | -155.9 | 270.1 | 0.86 | -0.74 | -1.16 | |
| 1,371.0 | 22.80 | 214.60 | 1,322.2 | -249.8 | -176.4 | 305.9 | 0.94 | 0.85 | -1.06 | |
| 1,466.0 | 23.40 | 214.20 | 1,409.6 | -280.6 | -197.5 | 343.1 | 0.65 | 0.63 | -0.42 | |
| 1,560.0 | 23.60 | 213.60 | 1,495.8 | -311.7 | -218.4 | 380.6 | 0.33 | 0.21 | -0.64 | |
| 1,655.0 | 24.10 | 213.10 | 1,582.7 | -343.8 | -239.5 | 419.0 | 0.57 | 0.53 | -0.53 | |
| 1,750.0 | 24.40 | 213.10 | 1,669.3 | -376.5 | -260.8 | 458.0 | 0.32 | 0.32 | 0.00 | |
| 1,844.0 | 23.30 | 213.60 | 1,755.3 | -408.2 | -281.7 | 496.0 | 1.19 | -1.17 | 0.53 | |
| 1,940.0 | 23.80 | 212.70 | 1,843.3 | -440.3 | -302.7 | 534.3 | 0.64 | 0.52 | -0.94 | |
| 2,033.0 | 23.00 | 212.70 | 1,928.6 | -471.4 | -322.6 | 571.2 | 0.86 | -0.86 | 0.00 | |
| 2,128.0 | 22.50 | 215.40 | 2,016.2 | -501.9 | -343.2 | 607.9 | 1.22 | -0.53 | 2.84 | |
| 2,223.0 | 23.40 | 215.90 | 2,103.7 | -532.0 | -364.8 | 645.0 | 0.97 | 0.95 | 0.53 | |
| 2,318.0 | 23.80 | 213.00 | 2,190.8 | -563.3 | -386.3 | 683.0 | 1.29 | 0.42 | -3.05 | |
| 2,412.0 | 23.40 | 213.10 | 2,276.9 | -594.9 | -406.8 | 720.6 | 0.43 | -0.43 | 0.11 | |
| 2,507.0 | 23.40 | 214.10 | 2,364.1 | -626.3 | -427.7 | 758.3 | 0.42 | 0.00 | 1.05 | |
| 2,601.0 | 23.20 | 215.70 | 2,450.4 | -656.8 | -449.0 | 795.5 | 0.71 | -0.21 | 1.70 | |
| 2,696.0 | 22.90 | 215.90 | 2,537.8 | -687.0 | -470.7 | 832.7 | 0.33 | -0.32 | 0.21 | |
| 2,791.0 | 22.90 | 215.00 | 2,625.3 | -717.1 | -492.2 | 869.7 | 0.37 | 0.00 | -0.95 | |
| 2,885.0 | 23.30 | 213.60 | 2,711.8 | -747.5 | -512.9 | 906.5 | 0.72 | 0.43 | -1.49 | |
| 2,962.0 | 23.30 | 213.60 | 2,782.5 | -772.9 | -529.8 | 937.0 | 0.00 | 0.00 | 0.00 | |
| 3,077.0 | 21.10 | 212.60 | 2,889.0 | -809.3 | -553.5 | 980.4 | 1.94 | -1.91 | -0.87 | |
| 3,171.0 | 20.50 | 212.00 | 2,976.9 | -837.5 | -571.4 | 1,013.7 | 0.68 | -0.64 | -0.64 | |
| 3,266.0 | 20.10 | 211.20 | 3,066.0 | -865.6 | -588.7 | 1,046.6 | 0.51 | -0.42 | -0.84 | |
| 3,360.0 | 19.60 | 211.10 | 3,154.4 | -892.9 | -605.2 | 1,078.5 | 0.53 | -0.53 | -0.11 | |
| 3,455.0 | 20.10 | 214.30 | 3,243.7 | -920.0 | -622.6 | 1,110.7 | 1.26 | 0.53 | 3.37 | |
| 3,550.0 | 19.50 | 214.00 | 3,333.1 | -946.6 | -640.7 | 1,142.9 | 0.64 | -0.63 | -0.32 | |
| 3,644.0 | 20.00 | 217.50 | 3,421.6 | -972.4 | -659.2 | 1,174.6 | 1.37 | 0.53 | 3.72 | |
| 3,739.0 | 20.80 | 219.30 | 3,510.6 | -998.3 | -679.8 | 1,207.7 | 1.07 | 0.84 | 1.89 | |
| 3,833.0 | 21.90 | 220.90 | 3,598.2 | -1,024.5 | -701.8 | 1,241.8 | 1.32 | 1.17 | 1.70 | |
| 3,928.0 | 22.10 | 220.50 | 3,686.3 | -1,051.5 | -725.0 | 1,277.2 | 0.26 | 0.21 | -0.42 | |
| 4,023.0 | 23.50 | 216.00 | 3,773.9 | -1,080.4 | -747.8 | 1,313.9 | 2.35 | 1.47 | -4.74 | |
| 4,117.0 | 24.60 | 216.20 | 3,859.7 | -1,111.4 | -770.4 | 1,352.2 | 1.17 | 1.17 | 0.21 | |
| 4,212.0 | 24.10 | 216.70 | 3,946.2 | -1,142.9 | -793.6 | 1,391.4 | 0.57 | -0.53 | 0.53 | |
| 4,306.0 | 25.10 | 216.20 | 4,031.7 | -1,174.3 | -816.9 | 1,430.5 | 1.09 | 1.06 | -0.53 | |
| 4,401.0 | 24.40 | 215.90 | 4,118.0 | -1,206.5 | -840.3 | 1,470.3 | 0.75 | -0.74 | -0.32 | |
| 4,496.0 | 25.40 | 216.40 | 4,204.1 | -1,238.8 | -863.9 | 1,510.3 | 1.08 | 1.05 | 0.53 | |
| 4,590.0 | 24.30 | 216.30 | 4,289.4 | -1,270.6 | -887.3 | 1,549.8 | 1.17 | -1.17 | -0.11 | |

| | | | |
|------------------|------------------------|-------------------------------------|---|
| Company: | Caerus Oil & Gas | Local Co-ordinate Reference: | Well BJU G35 FED 15A-35 496 - Slot 15A-35 |
| Project: | Garfield County, CO | TVD Reference: | RKB @ 8194.0usft (H&P #330) |
| Site: | NPM G35 496 Pad | MD Reference: | RKB @ 8194.0usft (H&P #330) |
| Well: | BJU G35 FED 15A-35 496 | North Reference: | True |
| Wellbore: | Wellbore #1 | Survey Calculation Method: | Minimum Curvature |
| Design: | Wellbore #1 | Database: | EDM 5000.1 Single User Db |

| Survey | | | | | | | | | | |
|-----------------------|-----------------|-------------|-----------------------|--------------|--------------|-------------------------|-------------------------|------------------------|-----------------------|--|
| Measured Depth (usft) | Inclination (°) | Azimuth (°) | Vertical Depth (usft) | +N/-S (usft) | +E/-W (usft) | Vertical Section (usft) | Dogleg Rate (°/100usft) | Build Rate (°/100usft) | Turn Rate (°/100usft) | |
| 4,685.0 | 25.80 | 215.80 | 4,375.5 | -1,303.1 | -911.0 | 1,590.0 | 1.59 | 1.58 | -0.53 | |
| 4,780.0 | 25.30 | 216.70 | 4,461.2 | -1,336.2 | -935.2 | 1,630.9 | 0.67 | -0.53 | 0.95 | |
| 4,874.0 | 25.00 | 217.70 | 4,546.3 | -1,368.0 | -959.3 | 1,670.9 | 0.55 | -0.32 | 1.06 | |
| 4,969.0 | 24.70 | 217.40 | 4,632.5 | -1,399.7 | -983.7 | 1,710.7 | 0.34 | -0.32 | -0.32 | |
| 5,063.0 | 24.70 | 216.20 | 4,717.9 | -1,431.1 | -1,007.2 | 1,750.0 | 0.53 | 0.00 | -1.28 | |
| 5,158.0 | 24.00 | 216.00 | 4,804.5 | -1,462.8 | -1,030.3 | 1,789.2 | 0.74 | -0.74 | -0.21 | |
| 5,253.0 | 25.60 | 211.50 | 4,890.7 | -1,495.9 | -1,052.4 | 1,829.0 | 2.60 | 1.68 | -4.74 | |
| 5,348.0 | 24.60 | 212.40 | 4,976.7 | -1,530.1 | -1,073.7 | 1,869.2 | 1.13 | -1.05 | 0.95 | |
| 5,442.0 | 24.00 | 213.60 | 5,062.4 | -1,562.5 | -1,094.7 | 1,907.9 | 0.83 | -0.64 | 1.28 | |
| 5,537.0 | 25.00 | 212.20 | 5,148.8 | -1,595.6 | -1,116.1 | 1,947.2 | 1.22 | 1.05 | -1.47 | |
| 5,631.0 | 25.10 | 211.60 | 5,234.0 | -1,629.4 | -1,137.2 | 1,987.0 | 0.29 | 0.11 | -0.64 | |
| 5,726.0 | 24.10 | 212.60 | 5,320.4 | -1,662.9 | -1,158.2 | 2,026.5 | 1.14 | -1.05 | 1.05 | |
| 5,821.0 | 25.00 | 215.70 | 5,406.8 | -1,695.5 | -1,180.3 | 2,065.9 | 1.65 | 0.95 | 3.26 | |
| 5,915.0 | 24.70 | 216.70 | 5,492.1 | -1,727.4 | -1,203.7 | 2,105.4 | 0.55 | -0.32 | 1.06 | |
| 6,010.0 | 24.30 | 215.60 | 5,578.5 | -1,759.2 | -1,226.9 | 2,144.8 | 0.64 | -0.42 | -1.16 | |
| 6,105.0 | 23.80 | 216.00 | 5,665.3 | -1,790.6 | -1,249.6 | 2,183.5 | 0.55 | -0.53 | 0.42 | |
| 6,199.0 | 23.40 | 217.10 | 5,751.4 | -1,820.9 | -1,272.0 | 2,221.1 | 0.63 | -0.43 | 1.17 | |
| 6,294.0 | 22.60 | 216.90 | 5,838.9 | -1,850.5 | -1,294.3 | 2,258.2 | 0.85 | -0.84 | -0.21 | |
| 6,388.0 | 21.10 | 216.70 | 5,926.1 | -1,878.5 | -1,315.3 | 2,293.2 | 1.60 | -1.60 | -0.21 | |
| 6,483.0 | 19.80 | 216.50 | 6,015.1 | -1,905.2 | -1,335.0 | 2,326.4 | 1.37 | -1.37 | -0.21 | |
| 6,578.0 | 17.60 | 215.90 | 6,105.1 | -1,929.7 | -1,353.0 | 2,356.8 | 2.32 | -2.32 | -0.63 | |
| 6,673.0 | 18.30 | 215.30 | 6,195.5 | -1,953.5 | -1,370.1 | 2,386.1 | 0.76 | 0.74 | -0.63 | |
| 6,767.0 | 17.50 | 214.10 | 6,284.9 | -1,977.3 | -1,386.5 | 2,415.0 | 0.94 | -0.85 | -1.28 | |
| 6,862.0 | 16.60 | 212.80 | 6,375.8 | -2,000.5 | -1,401.9 | 2,442.8 | 1.03 | -0.95 | -1.37 | |
| 6,957.0 | 17.10 | 215.00 | 6,466.7 | -2,023.4 | -1,417.3 | 2,470.3 | 0.85 | 0.53 | 2.32 | |
| 7,051.0 | 16.60 | 214.50 | 6,556.6 | -2,045.8 | -1,432.8 | 2,497.6 | 0.55 | -0.53 | -0.53 | |
| 7,146.0 | 16.30 | 213.30 | 6,647.8 | -2,068.1 | -1,447.8 | 2,524.5 | 0.48 | -0.32 | -1.26 | |
| 7,240.0 | 16.10 | 213.40 | 6,738.0 | -2,090.0 | -1,462.2 | 2,550.7 | 0.21 | -0.21 | 0.11 | |
| 7,335.0 | 16.00 | 213.80 | 6,829.3 | -2,111.9 | -1,476.7 | 2,577.0 | 0.16 | -0.11 | 0.42 | |
| 7,430.0 | 15.60 | 213.00 | 6,920.7 | -2,133.5 | -1,491.0 | 2,602.8 | 0.48 | -0.42 | -0.84 | |
| 7,524.0 | 14.90 | 212.10 | 7,011.4 | -2,154.3 | -1,504.3 | 2,627.5 | 0.79 | -0.74 | -0.96 | |
| 7,619.0 | 14.80 | 212.30 | 7,103.3 | -2,174.9 | -1,517.3 | 2,651.8 | 0.12 | -0.11 | 0.21 | |
| 7,713.0 | 14.40 | 212.40 | 7,194.2 | -2,194.9 | -1,529.9 | 2,675.5 | 0.43 | -0.43 | 0.11 | |
| 7,808.0 | 12.70 | 211.60 | 7,286.6 | -2,213.8 | -1,541.7 | 2,697.7 | 1.80 | -1.79 | -0.84 | |
| 7,903.0 | 11.90 | 210.30 | 7,379.4 | -2,231.1 | -1,552.2 | 2,717.9 | 0.89 | -0.84 | -1.37 | |
| 7,997.0 | 9.90 | 213.80 | 7,471.7 | -2,246.2 | -1,561.5 | 2,735.6 | 2.24 | -2.13 | 3.72 | |
| 8,092.0 | 8.10 | 214.40 | 7,565.5 | -2,258.5 | -1,569.9 | 2,750.5 | 1.90 | -1.89 | 0.63 | |
| 8,187.0 | 6.70 | 212.10 | 7,659.7 | -2,268.7 | -1,576.6 | 2,762.7 | 1.51 | -1.47 | -2.42 | |
| 8,282.0 | 4.70 | 200.40 | 7,754.2 | -2,277.1 | -1,580.9 | 2,772.0 | 2.42 | -2.11 | -12.32 | |
| 8,376.0 | 3.60 | 183.00 | 7,848.0 | -2,283.7 | -1,582.4 | 2,778.3 | 1.77 | -1.17 | -18.51 | |
| 8,471.0 | 1.70 | 197.10 | 7,942.9 | -2,288.0 | -1,583.0 | 2,782.1 | 2.10 | -2.00 | 14.84 | |
| 8,565.0 | 1.10 | 325.30 | 8,036.9 | -2,288.6 | -1,583.9 | 2,783.1 | 2.69 | -0.64 | 136.38 | |
| 8,660.0 | 1.90 | 328.10 | 8,131.9 | -2,286.5 | -1,585.2 | 2,782.2 | 0.85 | 0.84 | 2.95 | |

| | | | |
|------------------|------------------------|-------------------------------------|---|
| Company: | Caerus Oil & Gas | Local Co-ordinate Reference: | Well BJU G35 FED 15A-35 496 - Slot 15A-35 |
| Project: | Garfield County, CO | TVD Reference: | RKB @ 8194.0usft (H&P #330) |
| Site: | NPM G35 496 Pad | MD Reference: | RKB @ 8194.0usft (H&P #330) |
| Well: | BJU G35 FED 15A-35 496 | North Reference: | True |
| Wellbore: | Wellbore #1 | Survey Calculation Method: | Minimum Curvature |
| Design: | Wellbore #1 | Database: | EDM 5000.1 Single User Db |

| Survey | | | | | | | | | | |
|--|-----------------|-------------|-----------------------|--------------|--------------|-------------------------|-------------------------|------------------------|-----------------------|--|
| Measured Depth (usft) | Inclination (°) | Azimuth (°) | Vertical Depth (usft) | +N/-S (usft) | +E/-W (usft) | Vertical Section (usft) | Dogleg Rate (°/100usft) | Build Rate (°/100usft) | Turn Rate (°/100usft) | |
| 8,754.0 | 1.80 | 318.90 | 8,225.8 | -2,284.0 | -1,587.0 | 2,781.2 | 0.33 | -0.11 | -9.79 | |
| 8,849.0 | 1.80 | 311.10 | 8,320.8 | -2,281.9 | -1,589.1 | 2,780.7 | 0.26 | 0.00 | -8.21 | |
| 8,943.0 | 1.40 | 307.10 | 8,414.7 | -2,280.3 | -1,591.2 | 2,780.5 | 0.44 | -0.43 | -4.26 | |
| 9,038.0 | 1.50 | 292.70 | 8,509.7 | -2,279.1 | -1,593.2 | 2,780.8 | 0.40 | 0.11 | -15.16 | |
| 9,133.0 | 1.70 | 276.20 | 8,604.7 | -2,278.5 | -1,595.8 | 2,781.7 | 0.53 | 0.21 | -17.37 | |
| 9,227.0 | 0.40 | 292.60 | 8,698.6 | -2,278.2 | -1,597.5 | 2,782.5 | 1.41 | -1.38 | 17.45 | |
| 9,322.0 | 1.00 | 93.20 | 8,793.6 | -2,278.1 | -1,597.0 | 2,782.1 | 1.46 | 0.63 | 169.05 | |
| 9,416.0 | 1.10 | 96.60 | 8,887.6 | -2,278.3 | -1,595.2 | 2,781.2 | 0.13 | 0.11 | 3.62 | |
| 9,511.0 | 0.90 | 117.30 | 8,982.6 | -2,278.7 | -1,593.7 | 2,780.7 | 0.43 | -0.21 | 21.79 | |
| 9,606.0 | 0.30 | 172.10 | 9,077.6 | -2,279.3 | -1,593.0 | 2,780.8 | 0.81 | -0.63 | 57.68 | |
| 9,700.0 | 0.70 | 202.60 | 9,171.6 | -2,280.1 | -1,593.2 | 2,781.5 | 0.50 | 0.43 | 32.45 | |
| 9,795.0 | 0.90 | 214.00 | 9,266.6 | -2,281.2 | -1,593.8 | 2,782.8 | 0.27 | 0.21 | 12.00 | |
| 9,889.0 | 1.30 | 212.80 | 9,360.6 | -2,282.7 | -1,594.8 | 2,784.6 | 0.43 | 0.43 | -1.28 | |
| 9,984.0 | 1.30 | 179.80 | 9,455.5 | -2,284.7 | -1,595.4 | 2,786.6 | 0.78 | 0.00 | -34.74 | |
| 10,078.0 | 1.20 | 157.40 | 9,549.5 | -2,286.7 | -1,595.0 | 2,788.0 | 0.53 | -0.11 | -23.83 | |
| 10,173.0 | 1.10 | 173.00 | 9,644.5 | -2,288.5 | -1,594.5 | 2,789.2 | 0.34 | -0.11 | 16.42 | |
| 10,267.0 | 1.10 | 174.60 | 9,738.5 | -2,290.3 | -1,594.3 | 2,790.5 | 0.03 | 0.00 | 1.70 | |
| 10,362.0 | 1.30 | 178.10 | 9,833.5 | -2,292.3 | -1,594.2 | 2,792.1 | 0.22 | 0.21 | 3.68 | |
| 10,456.0 | 1.30 | 183.30 | 9,927.4 | -2,294.4 | -1,594.2 | 2,793.9 | 0.13 | 0.00 | 5.53 | |
| 10,551.0 | 1.10 | 187.20 | 10,022.4 | -2,296.4 | -1,594.4 | 2,795.6 | 0.23 | -0.21 | 4.11 | |
| 10,645.0 | 1.20 | 198.60 | 10,116.4 | -2,298.2 | -1,594.8 | 2,797.3 | 0.27 | 0.11 | 12.13 | |
| 10,740.0 | 1.70 | 209.70 | 10,211.4 | -2,300.4 | -1,595.8 | 2,799.7 | 0.60 | 0.53 | 11.68 | |
| 10,835.0 | 1.80 | 222.80 | 10,306.3 | -2,302.7 | -1,597.5 | 2,802.6 | 0.43 | 0.11 | 13.79 | |
| 10,929.0 | 1.50 | 218.50 | 10,400.3 | -2,304.8 | -1,599.3 | 2,805.2 | 0.35 | -0.32 | -4.57 | |
| 11,024.0 | 1.70 | 217.90 | 10,495.3 | -2,306.8 | -1,601.0 | 2,807.9 | 0.21 | 0.21 | -0.63 | |
| 11,118.0 | 1.50 | 221.20 | 10,589.2 | -2,308.9 | -1,602.6 | 2,810.5 | 0.23 | -0.21 | 3.51 | |
| 11,212.0 | 1.60 | 225.30 | 10,683.2 | -2,310.7 | -1,604.4 | 2,813.0 | 0.16 | 0.11 | 4.36 | |
| 11,307.0 | 1.70 | 241.40 | 10,778.1 | -2,312.3 | -1,606.5 | 2,815.6 | 0.50 | 0.11 | 16.95 | |
| 11,402.0 | 1.70 | 240.60 | 10,873.1 | -2,313.7 | -1,609.0 | 2,818.1 | 0.02 | 0.00 | -0.84 | |
| 11,496.0 | 2.00 | 236.80 | 10,967.0 | -2,315.3 | -1,611.6 | 2,820.9 | 0.34 | 0.32 | -4.04 | |
| 11,591.0 | 2.80 | 237.80 | 11,062.0 | -2,317.4 | -1,614.9 | 2,824.6 | 0.84 | 0.84 | 1.05 | |
| 11,686.0 | 3.20 | 239.00 | 11,156.8 | -2,320.0 | -1,619.2 | 2,829.2 | 0.43 | 0.42 | 1.26 | |
| 11,780.0 | 3.50 | 238.80 | 11,250.7 | -2,322.9 | -1,623.9 | 2,834.2 | 0.32 | 0.32 | -0.21 | |
| 11,875.0 | 3.70 | 240.70 | 11,345.5 | -2,325.9 | -1,629.0 | 2,839.6 | 0.25 | 0.21 | 2.00 | |
| 11,993.0 | 3.60 | 242.50 | 11,463.2 | -2,329.4 | -1,635.6 | 2,846.3 | 0.13 | -0.08 | 1.53 | |
| TD @ 12051.0' MD / 11521.1' TVD | | | | | | | | | | |
| 12,051.0 | 3.60 | 242.50 | 11,521.1 | -2,331.1 | -1,638.9 | 2,849.6 | 0.00 | 0.00 | 0.00 | |

| | | | |
|------------------|------------------------|-------------------------------------|---|
| Company: | Caerus Oil & Gas | Local Co-ordinate Reference: | Well BJU G35 FED 15A-35 496 - Slot 15A-35 |
| Project: | Garfield County, CO | TVD Reference: | RKB @ 8194.0usft (H&P #330) |
| Site: | NPM G35 496 Pad | MD Reference: | RKB @ 8194.0usft (H&P #330) |
| Well: | BJU G35 FED 15A-35 496 | North Reference: | True |
| Wellbore: | Wellbore #1 | Survey Calculation Method: | Minimum Curvature |
| Design: | Wellbore #1 | Database: | EDM 5000.1 Single User Db |

| Design Annotations | | | | |
|-----------------------|-----------------------|-------------------|--------------|--------------------------------------|
| Measured Depth (usft) | Vertical Depth (usft) | Local Coordinates | | Comment |
| | | +N/-S (usft) | +E/-W (usft) | |
| 118.0 | 118.0 | 1.3 | 0.6 | Gyro Tie-in @ 118.0' MD / 118.0' TVD |
| 12,051.0 | 11,521.1 | -2,331.1 | -1,638.9 | TD @ 12051.0' MD / 11521.1' TVD |