

BJU G35 FED 14C-35 496
Garfield County, CO
Q220311 & RM-220285
Design #3

Company Name: Caerus Oil & Gas
BJU G35 FED 14C-35 496
Garfield County, CO
Rig: H&P#329
Created By: Will Jircik
Date: 12:44, April 10 2022

WELL DETAILS: BJU G35 FED 14C-35 496

+N/-S	+E/-W	Northing	Easting	Latitude	Longitude
0.0	0.0	14415246.40	2447092.90	39.660333	-108.133988 14C-35

PROJECT DETAILS: Garfield County, CO

System Datum: Universal Transverse Mercator (US Survey Feet)
Datum: NAD 1927 - Western US
Ellipsoid: Clarke 1866
Zone: Zone 12N (114 W to 108 W)
Geodetic System: Mean Sea Level

DESIGN TARGET DETAILS

Name	TVD	+N/-S	+E/-W	Northing	Easting	Latitude	Longitude
14C-35 - OHCR	7798.0	-1770.6	-1556.314413426.99	2445593.93		39.655474	-108.139513
14C-35 - PBHL	11559.0	-1804.8	-1650.314413389.80	2445501.10		39.655380	-108.139847

DESIGN ANNOTATIONS

MD	Inc	Azi	TVD	+N/-S	+E/-W	VsectDeparture	Annotation
114.0	0.84	263.12	114.0	-0.3	-0.9	0.8	0.0 Conductor Tie in
136.4	1.00	221.30	136.4	-0.4	-1.2	1.2	0.4 EOB @ 1.00° Inc. / 221.37° Azm
199.9	1.00	221.30	199.8	-1.3	-2.0	2.3	1.5 Build 3° / 100°
785.9	18.58	221.30	775.1	-75.8	-67.5	101.5	100.7 EOB @ 18.58° Inc. / 221.30° Azm
7553.0	18.58	221.30	7189.4	-1695.8	-1490.6	2257.4	2257.0 Drop 3° / 100°
8172.4	0.00	0.00	7798.0	-1770.6	-1556.3	2356.9	2356.6 EOB @ Vertical / Build 1.5° / 100°
8275.3	1.54	250.00	7900.9	-1771.1	-1557.6	2358.1	2358.0 EOB @ 1.54° Inc. / 250.00° Azm
11934.7	1.54	250.00	11559.0	-1804.8	-1650.3	2445.6	2456.6 TD @ 11934.7° MD / 11559.0° TVD

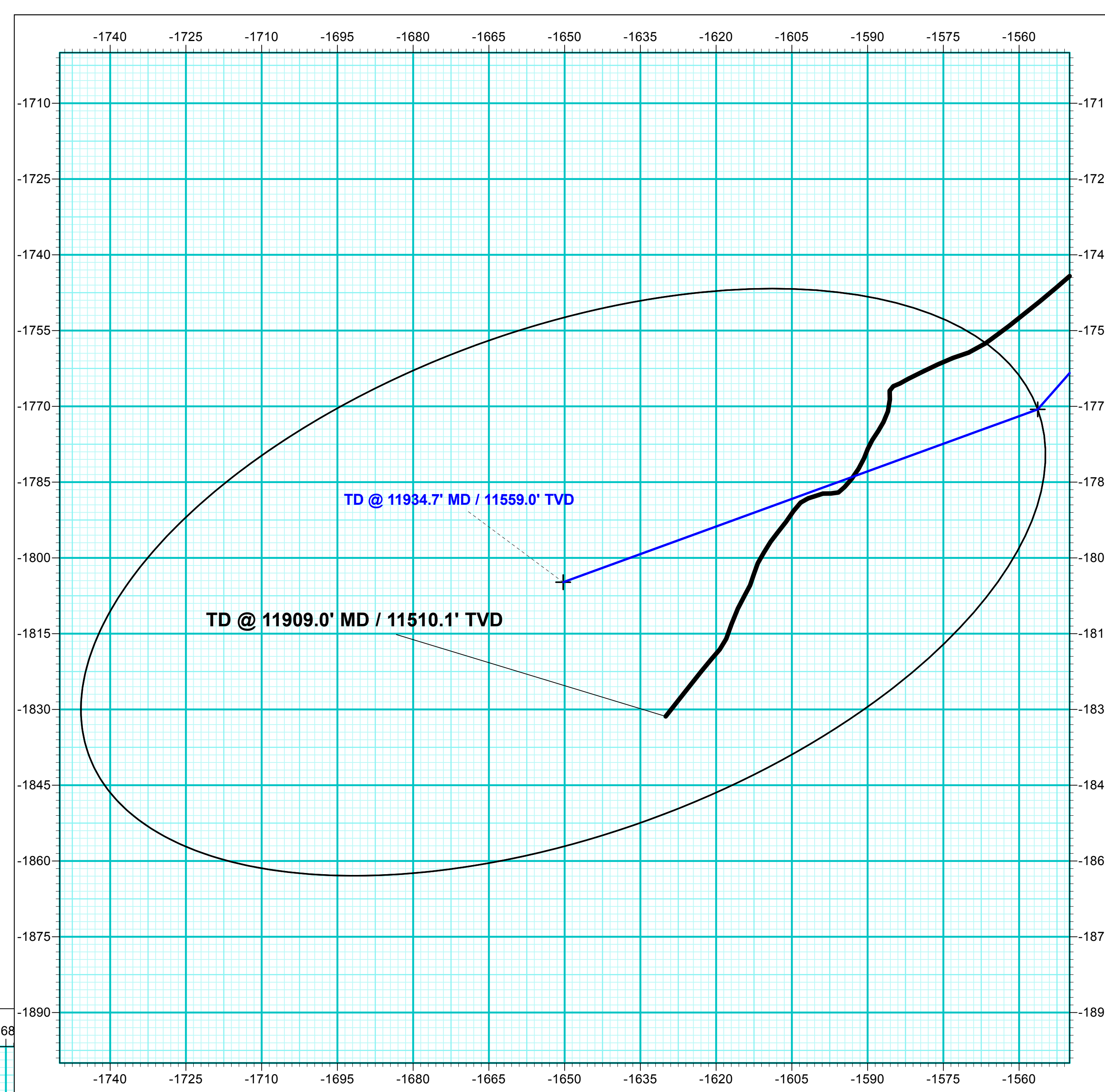
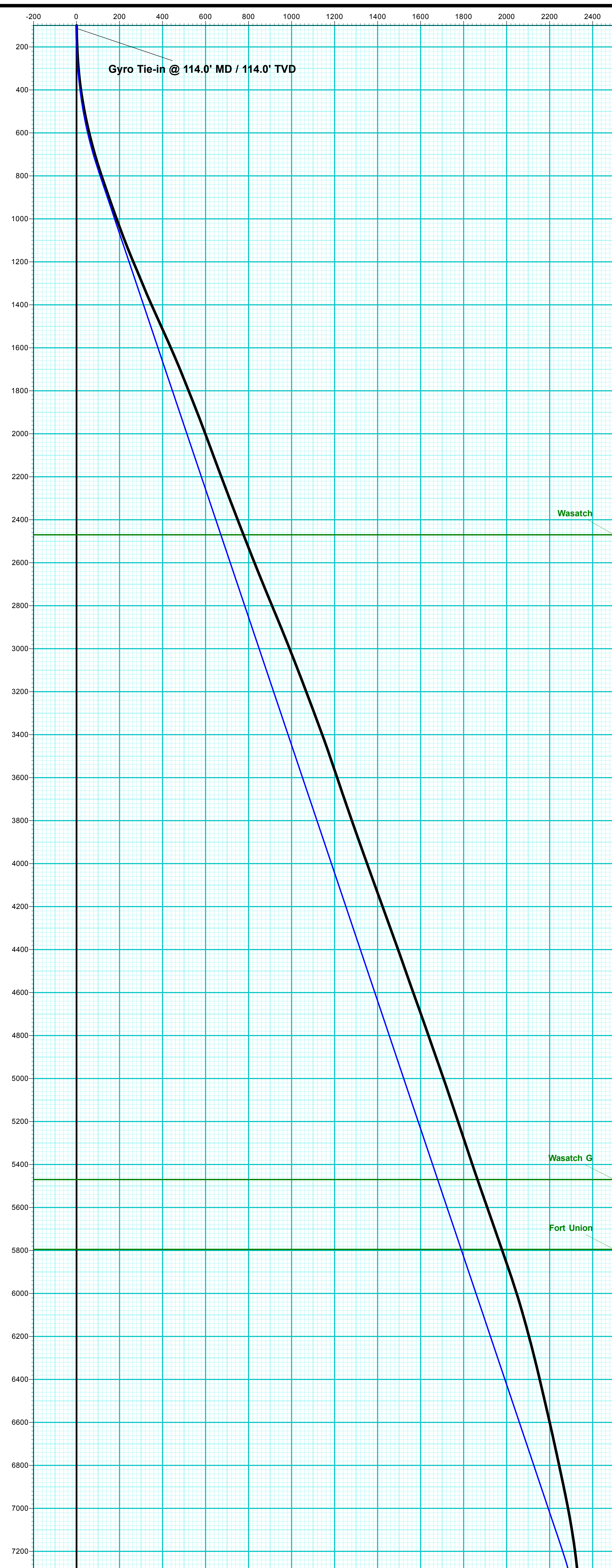
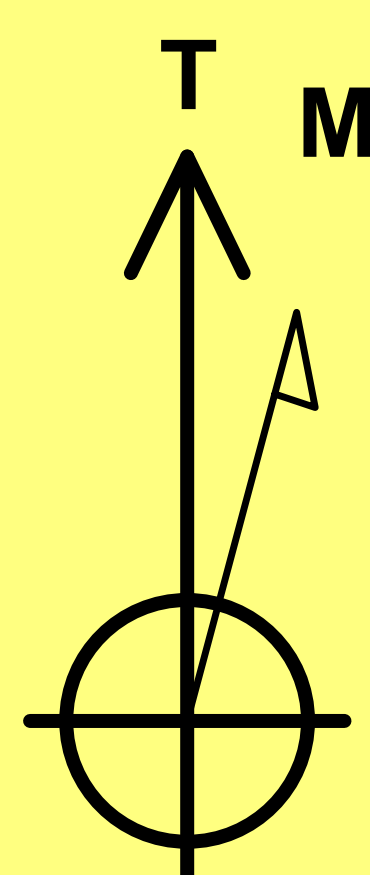
FORMATION TOP DETAILS

TVDPath	MDPath	Formation
2470.0	2574.0	Wasatch
5470.0	5739.0	Wasatch G
5795.0	6081.9	Fort Union
7798.0	8172.4	Ohio Creek
7798.0	8172.4	TOG
8043.0	8417.4	Williams Fork
10757.0	11132.4	Cameo
11359.0	11734.6	Rollins



Azimuths to True North
Magnetic North: 9.25°

Strength: 51099.2nT
Dip Angle: 65.72°
Date: 4/1/2022
Model: HDGM2022

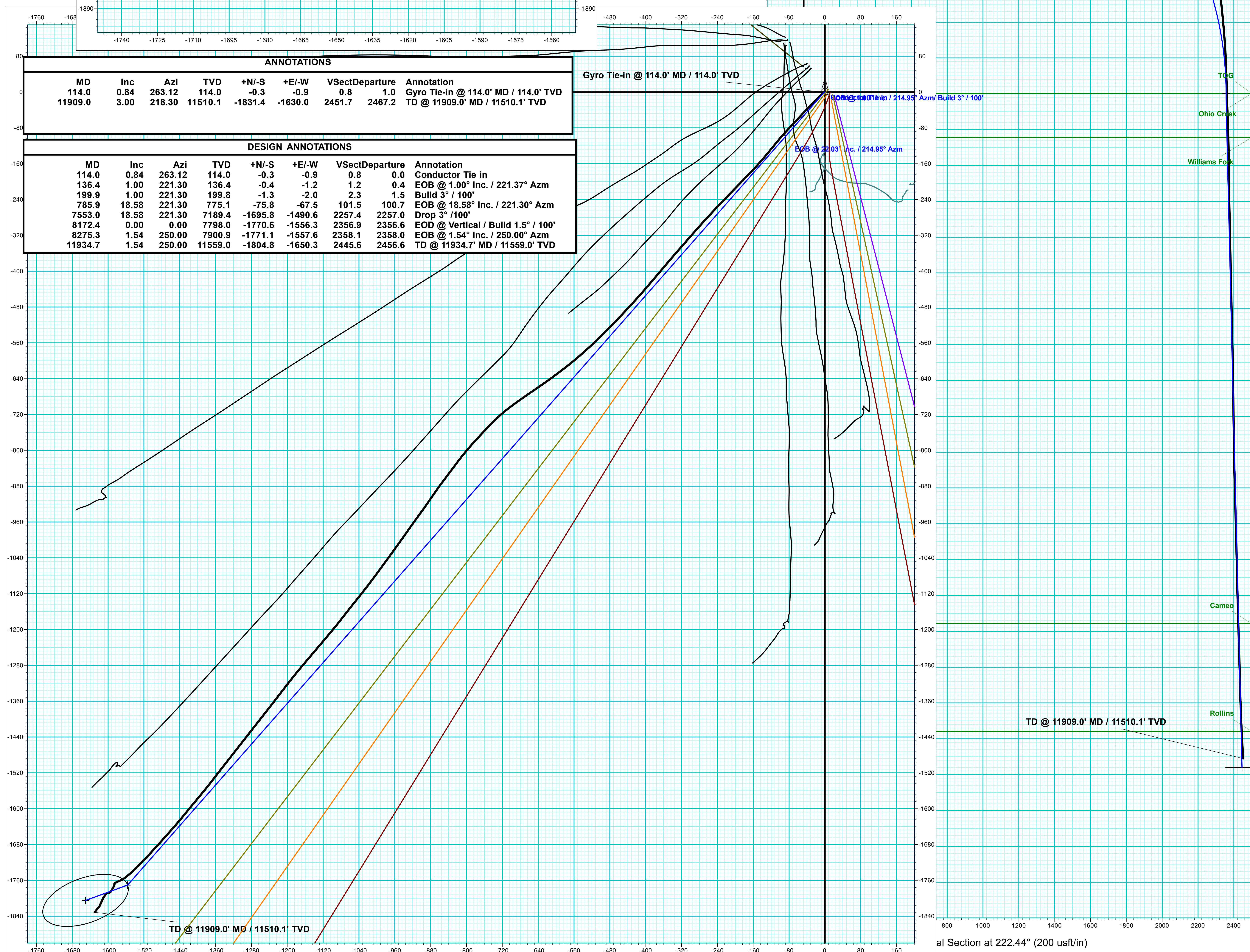


ANNOTATIONS

MD	Inc	Azi	TVD	+N/-S	+E/-W	VsectDeparture	Annotation
114.0	0.84	263.12	114.0	-0.3	-0.9	0.8	1.0 Gyro Tie-in @ 114.0' MD / 114.0' TVD
11909.0	3.00	218.30	11510.1	-1831.4	-1630.0	2451.7	2467.2 TD @ 11909.0' MD / 11510.1' TVD

DESIGN ANNOTATIONS

MD	Inc	Azi	TVD	+N/-S	+E/-W	VsectDeparture	Annotation
114.0	0.84	263.12	114.0	-0.3	-0.9	0.8	0.0 Conductor Tie in
136.4	1.00	221.30	136.4	-0.4	-1.2	1.2	0.4 EOB @ 1.00° Inc. / 221.37° Azm
199.9	1.00	221.30	199.8	-1.3	-2.0	2.3	1.5 Build 3° / 100°
785.9	18.58	221.30	775.1	-75.8	-67.5	101.5	100.7 EOB @ 18.58° Inc. / 221.30° Azm
7553.0	18.58	221.30	7189.4	-1695.8	-1490.6	2257.4	2257.0 Drop 3° / 100°
8172.4	0.00	0.00	7798.0	-1770.6	-1556.3	2356.9	2356.6 EOB @ Vertical / Build 1.5° / 100°
8275.3	1.54	250.00	7900.9	-1771.1	-1557.6	2358.1	2358.0 EOB @ 1.54° Inc. / 250.00° Azm
11934.7	1.54	250.00	11559.0	-1804.8	-1650.3	2445.6	2456.6 TD @ 11934.7° MD / 11559.0° TVD



al Section at 222.44° (200 usf/in)



Caerus Oil & Gas

Garfield County, CO

NPM G35 496 Pad

BJU G35 FED 14C-35 496 - Slot 14C-35

Wellbore #1

Design: Wellbore #1

KLX Survey Report

10 April, 2022



Company:	Caerus Oil & Gas	Local Co-ordinate Reference:	Well BJU G35 FED 14C-35 496 - Slot 14C-35
Project:	Garfield County, CO	TVD Reference:	RKB @ 8194.0usft (H&P#329)
Site:	NPM G35 496 Pad	MD Reference:	RKB @ 8194.0usft (H&P#329)
Well:	BJU G35 FED 14C-35 496	North Reference:	True
Wellbore:	Wellbore #1	Survey Calculation Method:	Minimum Curvature
Design:	Wellbore #1	Database:	EDM 5000.1 Single User Db

Project	Garfield County, CO		
Map System:	Universal Transverse Mercator (US Survey Feet)	System Datum:	Mean Sea Level
Geo Datum:	NAD 1927 - Western US		
Map Zone:	Zone 12N (114 W to 108 W)		

Site	NPM G35 496 Pad				
Site Position:		Northing:	14,415,365.20 usft	Latitude:	39.660667
From:	Map	Easting:	2,447,000.80 usft	Longitude:	-108.134301
Position Uncertainty:	0.0 usft	Slot Radius:	13-3/16 "	Grid Convergence:	1.83 °

Well	BJU G35 FED 14C-35 496 - Slot 14C-35					
Well Position	+N/-S	0.0 usft	Northing:	14,415,246.40 usft	Latitude:	39.660333
	+E/-W	0.0 usft	Easting:	2,447,092.90 usft	Longitude:	-108.133988
Position Uncertainty		0.0 usft	Wellhead Elevation:	usft	Ground Level:	8,164.0 usft

Wellbore	Wellbore #1				
Magnetics	Model Name	Sample Date	Declination (°)	Dip Angle (°)	Field Strength (nT)
	HDGM2022	4/1/2022	9.25	65.72	51,099.20000000

Design	Wellbore #1				
Audit Notes:					
Version:	1.0	Phase:	ACTUAL	Tie On Depth:	0.0
Vertical Section:	Depth From (TVD) (usft)	+N/-S (usft)	+E/-W (usft)	Direction (°)	
	0.0	0.0	0.0	221.67	

Survey Program	Date	4/10/2022			
From (usft)	To (usft)	Survey (Wellbore)	Tool Name	Description	
30.0	114.0	Sfc Gyro (Wellbore #1)	GYRO-NS	OWSG Gyrocompass Gyro	
245.0	11,909.0	KLX MWD (Wellbore #1)	MWD	OWSG MWD - Standard	

Survey										
Measured Depth (usft)	Inclination (°)	Azimuth (°)	Vertical Depth (usft)	+N/-S (usft)	+E/-W (usft)	Vertical Section (usft)	Dogleg Rate (°/100usft)	Build Rate (°/100usft)	Turn Rate (°/100usft)	
0.0	0.00	0.00	0.0	0.0	0.0	0.0	0.00	0.00	0.00	
30.0	0.00	0.00	30.0	0.0	0.0	0.0	0.00	0.00	0.00	
60.0	0.81	261.52	60.0	0.0	-0.2	0.2	2.70	2.70	0.00	
90.0	0.85	242.06	90.0	-0.2	-0.6	0.5	0.94	0.13	-64.87	
Gyro Tie-in @ 114.0' MD / 114.0' TVD										
114.0	0.84	263.12	114.0	-0.3	-0.9	0.8	1.29	-0.04	87.75	
245.0	3.40	225.30	244.9	-3.1	-4.7	5.4	2.13	1.95	-28.87	
337.0	5.90	225.30	336.6	-8.4	-10.0	12.9	2.72	2.72	0.00	
428.0	8.80	225.20	426.8	-16.6	-18.2	24.5	3.19	3.19	-0.11	
520.0	11.50	225.30	517.4	-28.0	-29.7	40.7	2.93	2.93	0.11	

Company:	Caerus Oil & Gas	Local Co-ordinate Reference:	Well BJU G35 FED 14C-35 496 - Slot 14C-35
Project:	Garfield County, CO	TVD Reference:	RKB @ 8194.0usft (H&P#329)
Site:	NPM G35 496 Pad	MD Reference:	RKB @ 8194.0usft (H&P#329)
Well:	BJU G35 FED 14C-35 496	North Reference:	True
Wellbore:	Wellbore #1	Survey Calculation Method:	Minimum Curvature
Design:	Wellbore #1	Database:	EDM 5000.1 Single User Db

Survey										
Measured Depth (usft)	Inclination (°)	Azimuth (°)	Vertical Depth (usft)	+N/-S (usft)	+E/-W (usft)	Vertical Section (usft)	Dogleg Rate (°/100usft)	Build Rate (°/100usft)	Turn Rate (°/100usft)	
615.0	13.80	223.70	610.1	-42.8	-44.3	61.4	2.45	2.42	-1.68	
709.0	16.00	222.70	700.9	-60.5	-60.8	85.6	2.36	2.34	-1.06	
804.0	18.50	223.40	791.6	-81.0	-80.1	113.8	2.64	2.63	0.74	
898.0	19.30	220.70	880.6	-103.6	-100.5	144.2	1.26	0.85	-2.87	
993.0	19.70	218.40	970.1	-128.1	-120.6	175.9	0.91	0.42	-2.42	
1,088.0	20.20	221.30	1,059.4	-153.0	-141.4	208.3	1.17	0.53	3.05	
1,182.0	22.50	223.70	1,147.0	-178.2	-164.5	242.5	2.62	2.45	2.55	
1,277.0	22.50	224.40	1,234.7	-204.3	-189.8	278.8	0.28	0.00	0.74	
1,372.0	22.50	223.90	1,322.5	-230.4	-215.1	315.1	0.20	0.00	-0.53	
1,466.0	24.50	223.70	1,408.7	-257.4	-241.1	352.6	2.13	2.13	-0.21	
1,561.0	24.30	222.30	1,495.2	-286.1	-267.9	391.8	0.64	-0.21	-1.47	
1,655.0	23.80	221.00	1,581.0	-314.8	-293.3	430.1	0.77	-0.53	-1.38	
1,750.0	22.90	221.50	1,668.3	-343.1	-318.1	467.8	0.97	-0.95	0.53	
1,845.0	21.60	220.40	1,756.2	-370.2	-341.7	503.7	1.44	-1.37	-1.16	
1,939.0	21.90	220.40	1,843.5	-396.8	-364.3	538.6	0.32	0.32	0.00	
2,034.0	21.00	220.30	1,931.9	-423.2	-386.8	573.3	0.95	-0.95	-0.11	
2,128.0	20.00	221.20	2,020.0	-448.2	-408.3	606.2	1.12	-1.06	0.96	
2,223.0	20.70	222.60	2,109.0	-472.8	-430.3	639.2	0.90	0.74	1.47	
2,318.0	20.40	223.30	2,198.0	-497.2	-453.1	672.6	0.41	-0.32	0.74	
2,412.0	20.70	224.30	2,286.0	-521.0	-475.9	705.6	0.49	0.32	1.06	
2,507.0	21.10	225.50	2,374.8	-545.0	-499.8	739.4	0.62	0.42	1.26	
2,602.0	21.40	227.20	2,463.3	-568.7	-524.7	773.7	0.72	0.32	1.79	
2,696.0	21.60	229.40	2,550.8	-591.6	-550.5	807.9	0.88	0.21	2.34	
2,791.0	22.20	232.10	2,638.9	-614.1	-577.9	842.9	1.23	0.63	2.84	
2,885.0	22.70	233.70	2,725.8	-635.7	-606.5	878.1	0.84	0.53	1.70	
2,980.0	23.30	235.80	2,813.2	-657.1	-636.8	914.2	1.07	0.63	2.21	
3,075.0	22.80	234.90	2,900.6	-678.3	-667.4	950.4	0.64	-0.53	-0.95	
3,169.0	22.00	234.30	2,987.6	-699.0	-696.6	985.3	0.89	-0.85	-0.64	
3,264.0	21.40	228.20	3,075.8	-720.9	-724.0	1,019.9	2.46	-0.63	-6.42	
3,358.0	20.80	223.20	3,163.5	-744.5	-748.2	1,053.6	2.02	-0.64	-5.32	
3,453.0	20.60	224.20	3,252.4	-768.8	-771.4	1,087.2	0.43	-0.21	1.05	
3,547.0	20.30	220.30	3,340.5	-793.1	-793.5	1,120.0	1.48	-0.32	-4.15	
3,642.0	20.00	217.80	3,429.7	-818.5	-814.1	1,152.7	0.96	-0.32	-2.63	
3,737.0	18.40	216.50	3,519.4	-843.4	-833.0	1,183.8	1.74	-1.68	-1.37	
3,832.0	19.20	217.50	3,609.3	-867.9	-851.4	1,214.3	0.91	0.84	1.05	
3,926.0	19.00	214.40	3,698.1	-892.7	-869.5	1,244.9	1.10	-0.21	-3.30	
4,021.0	18.90	214.80	3,788.0	-918.1	-887.0	1,275.5	0.17	-0.11	0.42	
4,116.0	19.80	216.40	3,877.6	-943.7	-905.3	1,306.8	1.10	0.95	1.68	
4,210.0	19.80	215.40	3,966.1	-969.5	-924.0	1,338.5	0.36	0.00	-1.06	
4,305.0	19.90	215.10	4,055.4	-995.9	-942.6	1,370.6	0.15	0.11	-0.32	
4,399.0	20.00	216.00	4,143.8	-1,022.0	-961.3	1,402.5	0.34	0.11	0.96	
4,494.0	20.00	216.20	4,233.1	-1,048.2	-980.4	1,434.8	0.07	0.00	0.21	
4,589.0	19.80	216.20	4,322.4	-1,074.3	-999.5	1,467.0	0.21	-0.21	0.00	

Company:	Caerus Oil & Gas	Local Co-ordinate Reference:	Well BJU G35 FED 14C-35 496 - Slot 14C-35
Project:	Garfield County, CO	TVD Reference:	RKB @ 8194.0usft (H&P#329)
Site:	NPM G35 496 Pad	MD Reference:	RKB @ 8194.0usft (H&P#329)
Well:	BJU G35 FED 14C-35 496	North Reference:	True
Wellbore:	Wellbore #1	Survey Calculation Method:	Minimum Curvature
Design:	Wellbore #1	Database:	EDM 5000.1 Single User Db

Survey										
Measured Depth (usft)	Inclination (°)	Azimuth (°)	Vertical Depth (usft)	+N/-S (usft)	+E/-W (usft)	Vertical Section (usft)	Dogleg Rate (°/100usft)	Build Rate (°/100usft)	Turn Rate (°/100usft)	
4,683.0	19.90	217.30	4,410.8	-1,099.9	-1,018.6	1,498.8	0.41	0.11	1.17	
4,778.0	19.20	219.00	4,500.3	-1,124.9	-1,038.2	1,530.5	0.95	-0.74	1.79	
4,872.0	19.60	218.40	4,589.0	-1,149.2	-1,057.7	1,561.7	0.48	0.43	-0.64	
4,967.0	19.90	217.70	4,678.4	-1,174.5	-1,077.5	1,593.7	0.40	0.32	-0.74	
5,062.0	19.00	219.80	4,768.0	-1,199.2	-1,097.3	1,625.3	1.20	-0.95	2.21	
5,156.0	19.30	220.10	4,856.8	-1,222.8	-1,117.1	1,656.1	0.34	0.32	0.32	
5,251.0	19.60	220.30	4,946.4	-1,247.0	-1,137.5	1,687.8	0.32	0.32	0.21	
5,346.0	18.70	220.50	5,036.1	-1,270.7	-1,157.7	1,718.9	0.95	-0.95	0.21	
5,441.0	18.60	219.30	5,126.1	-1,294.0	-1,177.2	1,749.3	0.42	-0.11	-1.26	
5,535.0	18.40	218.30	5,215.2	-1,317.3	-1,195.9	1,779.1	0.40	-0.21	-1.06	
5,630.0	18.60	217.20	5,305.3	-1,341.1	-1,214.4	1,809.1	0.42	0.21	-1.16	
5,724.0	18.50	218.00	5,394.5	-1,364.8	-1,232.6	1,839.0	0.29	-0.11	0.85	
5,819.0	19.00	218.00	5,484.4	-1,388.9	-1,251.4	1,869.5	0.53	0.53	0.00	
5,913.0	19.80	218.10	5,573.1	-1,413.5	-1,270.7	1,900.6	0.85	0.85	0.11	
6,008.0	18.80	218.30	5,662.7	-1,438.1	-1,290.1	1,932.0	1.05	-1.05	0.21	
6,102.0	19.30	218.10	5,751.6	-1,462.2	-1,309.0	1,962.6	0.54	0.53	-0.21	
6,197.0	19.40	217.80	5,841.2	-1,487.1	-1,328.4	1,994.0	0.15	0.11	-0.32	
6,292.0	18.30	218.10	5,931.1	-1,511.3	-1,347.3	2,024.6	1.16	-1.16	0.32	
6,386.0	17.20	217.60	6,020.6	-1,533.9	-1,364.9	2,053.2	1.18	-1.17	-0.53	
6,481.0	15.70	219.00	6,111.8	-1,555.0	-1,381.5	2,080.1	1.63	-1.58	1.47	
6,575.0	15.00	219.70	6,202.4	-1,574.3	-1,397.3	2,104.9	0.77	-0.74	0.74	
6,670.0	13.90	219.90	6,294.4	-1,592.5	-1,412.5	2,128.6	1.16	-1.16	0.21	
6,764.0	13.30	219.10	6,385.8	-1,609.5	-1,426.5	2,150.7	0.67	-0.64	-0.85	
6,859.0	13.20	219.70	6,478.2	-1,626.3	-1,440.3	2,172.5	0.18	-0.11	0.63	
6,954.0	12.90	221.80	6,570.8	-1,642.6	-1,454.3	2,193.9	0.59	-0.32	2.21	
7,048.0	12.50	221.50	6,662.5	-1,658.0	-1,468.1	2,214.6	0.43	-0.43	-0.32	
7,143.0	12.30	222.00	6,755.3	-1,673.3	-1,481.7	2,235.0	0.24	-0.21	0.53	
7,237.0	11.80	222.30	6,847.2	-1,687.8	-1,494.8	2,254.6	0.54	-0.53	0.32	
7,332.0	11.80	222.60	6,940.2	-1,702.1	-1,507.9	2,274.0	0.06	0.00	0.32	
7,426.0	10.20	226.00	7,032.5	-1,715.0	-1,520.4	2,291.9	1.84	-1.70	3.62	
7,521.0	9.10	224.10	7,126.1	-1,726.2	-1,531.7	2,307.8	1.21	-1.16	-2.00	
7,616.0	6.90	224.10	7,220.2	-1,735.7	-1,540.9	2,321.0	2.32	-2.32	0.00	
7,710.0	6.50	229.20	7,313.5	-1,743.3	-1,548.9	2,331.9	0.76	-0.43	5.43	
7,805.0	4.70	230.30	7,408.1	-1,749.3	-1,555.9	2,341.1	1.90	-1.89	1.16	
7,899.0	4.60	232.80	7,501.8	-1,754.0	-1,561.9	2,348.6	0.24	-0.11	2.66	
7,994.0	2.60	234.70	7,596.6	-1,757.6	-1,566.7	2,354.5	2.11	-2.11	2.00	
8,088.0	2.00	250.00	7,690.5	-1,759.3	-1,570.0	2,358.0	0.91	-0.64	16.28	
8,183.0	2.00	251.60	7,785.4	-1,760.4	-1,573.1	2,360.9	0.06	0.00	1.68	
8,277.0	2.00	242.10	7,879.4	-1,761.7	-1,576.1	2,363.8	0.35	0.00	-10.11	
8,372.0	2.20	246.40	7,974.3	-1,763.2	-1,579.2	2,367.1	0.27	0.21	4.53	
8,466.0	1.50	239.70	8,068.3	-1,764.6	-1,582.0	2,369.9	0.78	-0.74	-7.13	
8,561.0	0.80	244.60	8,163.3	-1,765.5	-1,583.6	2,371.7	0.74	-0.74	5.16	
8,656.0	0.90	250.10	8,258.2	-1,766.0	-1,584.9	2,372.9	0.14	0.11	5.79	

Company:	Caerus Oil & Gas	Local Co-ordinate Reference:	Well BJU G35 FED 14C-35 496 - Slot 14C-35
Project:	Garfield County, CO	TVD Reference:	RKB @ 8194.0usft (H&P#329)
Site:	NPM G35 496 Pad	MD Reference:	RKB @ 8194.0usft (H&P#329)
Well:	BJU G35 FED 14C-35 496	North Reference:	True
Wellbore:	Wellbore #1	Survey Calculation Method:	Minimum Curvature
Design:	Wellbore #1	Database:	EDM 5000.1 Single User Db

Survey										
Measured Depth (usft)	Inclination (°)	Azimuth (°)	Vertical Depth (usft)	+N/-S (usft)	+E/-W (usft)	Vertical Section (usft)	Dogleg Rate (°/100usft)	Build Rate (°/100usft)	Turn Rate (°/100usft)	
8,750.0	0.80	179.90	8,352.2	-1,766.9	-1,585.6	2,374.1	1.04	-0.11	-74.68	
8,845.0	1.30	178.90	8,447.2	-1,768.7	-1,585.6	2,375.3	0.53	0.53	-1.05	
8,939.0	1.60	197.70	8,541.2	-1,771.0	-1,586.0	2,377.3	0.59	0.32	20.00	
9,034.0	1.20	208.10	8,636.2	-1,773.1	-1,586.9	2,379.5	0.50	-0.42	10.95	
9,128.0	1.30	213.00	8,730.1	-1,774.9	-1,587.9	2,381.5	0.16	0.11	5.21	
9,223.0	1.30	214.00	8,825.1	-1,776.7	-1,589.1	2,383.7	0.02	0.00	1.05	
9,318.0	1.10	197.50	8,920.1	-1,778.5	-1,590.0	2,385.6	0.42	-0.21	-17.37	
9,412.0	1.30	205.60	9,014.1	-1,780.3	-1,590.7	2,387.4	0.28	0.21	8.62	
9,507.0	1.50	208.90	9,109.0	-1,782.3	-1,591.8	2,389.6	0.23	0.21	3.47	
9,601.0	1.50	220.10	9,203.0	-1,784.4	-1,593.2	2,392.1	0.31	0.00	11.91	
9,696.0	1.10	221.90	9,298.0	-1,786.0	-1,594.6	2,394.2	0.42	-0.42	1.89	
9,790.0	0.90	236.60	9,392.0	-1,787.1	-1,595.8	2,395.8	0.34	-0.21	15.64	
9,885.0	1.10	283.60	9,487.0	-1,787.3	-1,597.3	2,397.0	0.86	0.21	49.47	
9,979.0	0.90	251.60	9,581.0	-1,787.3	-1,598.9	2,398.1	0.62	-0.21	-34.04	
10,074.0	0.90	251.60	9,675.9	-1,787.7	-1,600.3	2,399.4	0.00	0.00	0.00	
10,168.0	1.00	253.10	9,769.9	-1,788.2	-1,601.8	2,400.7	0.11	0.11	1.60	
10,263.0	1.10	229.10	9,864.9	-1,789.1	-1,603.3	2,402.3	0.47	0.11	-25.26	
10,357.0	1.60	214.10	9,958.9	-1,790.7	-1,604.7	2,404.5	0.65	0.53	-15.96	
10,452.0	1.60	215.40	10,053.8	-1,792.9	-1,606.2	2,407.1	0.04	0.00	1.37	
10,546.0	1.50	222.00	10,147.8	-1,794.9	-1,607.8	2,409.7	0.22	-0.11	7.02	
10,641.0	1.40	212.50	10,242.8	-1,796.8	-1,609.2	2,412.1	0.27	-0.11	-10.00	
10,736.0	1.60	210.60	10,337.7	-1,798.9	-1,610.5	2,414.5	0.22	0.21	-2.00	
10,830.0	1.40	208.90	10,431.7	-1,801.1	-1,611.7	2,416.9	0.22	-0.21	-1.81	
10,925.0	1.50	191.10	10,526.7	-1,803.3	-1,612.5	2,419.1	0.48	0.11	-18.74	
11,019.0	1.30	208.10	10,620.7	-1,805.4	-1,613.3	2,421.2	0.49	-0.21	18.09	
11,114.0	1.50	208.00	10,715.6	-1,807.5	-1,614.4	2,423.5	0.21	0.21	-0.11	
11,208.0	2.00	206.80	10,809.6	-1,810.0	-1,615.7	2,426.3	0.53	0.53	-1.28	
11,303.0	2.10	197.80	10,904.5	-1,813.2	-1,617.0	2,429.4	0.35	0.11	-9.47	
11,397.0	1.60	202.90	10,998.5	-1,816.0	-1,618.0	2,432.3	0.56	-0.53	5.43	
11,492.0	1.40	220.70	11,093.4	-1,818.1	-1,619.3	2,434.7	0.53	-0.21	18.74	
11,587.0	1.60	221.10	11,188.4	-1,820.0	-1,620.9	2,437.2	0.21	0.21	0.42	
11,681.0	2.30	218.30	11,282.4	-1,822.5	-1,622.9	2,440.4	0.75	0.74	-2.98	
11,776.0	3.00	218.40	11,377.3	-1,825.9	-1,625.7	2,444.7	0.74	0.74	0.11	
11,848.0	3.00	218.30	11,449.2	-1,828.9	-1,628.0	2,448.5	0.01	0.00	-0.14	
TD @ 11909.0' MD / 11510.1' TVD										
11,909.0	3.00	218.30	11,510.1	-1,831.4	-1,630.0	2,451.7	0.00	0.00	0.00	

Design Annotations					
Measured Depth (usft)	Vertical Depth (usft)	Local Coordinates		Comment	
		+N/-S (usft)	+E/-W (usft)		
114.0	114.0	-0.3	-0.9	Gyro Tie-in @ 114.0' MD / 114.0' TVD	
11,909.0	11,510.1	-1,831.4	-1,630.0	TD @ 11909.0' MD / 11510.1' TVD	



Survey Report



Company:	Caerus Oil & Gas	Local Co-ordinate Reference:	Well BJU G35 FED 14C-35 496 - Slot 14C-35
Project:	Garfield County, CO	TVD Reference:	RKB @ 8194.0usft (H&P#329)
Site:	NPM G35 496 Pad	MD Reference:	RKB @ 8194.0usft (H&P#329)
Well:	BJU G35 FED 14C-35 496	North Reference:	True
Wellbore:	Wellbore #1	Survey Calculation Method:	Minimum Curvature
Design:	Wellbore #1	Database:	EDM 5000.1 Single User Db

Checked By: _____	Approved By: _____	Date: _____
-------------------	--------------------	-------------