



Bison Oil & Gas III PLUG & ABANDON POST JOB REPORT

**Rauth G 05-123-05661
S:13 T:9N R:58W Weld CO**

CallSheet #: 81485
Proposal #: 59896

Job Details & Summary

Geometry

Type	Function	OD (in)	ID (in)	Weight (lb/ft)	Top (ft)	Bottom (ft)	Excess (%)
Casing	Outer	10.75	10.192	32.75	0	270	0
Open Hole	Outer		8.625		270	6083	0
Tubing	Inner	2.875	2.441	6.4	0	6083	0

Equipment / People

Unit Type	Unit	Power Unit
Cement Trailer Float	CTF-278	TRC(TRB)-110
Cement Trailer Float	CTF-202	TRC(TRB)-108
Cement Utility Float	CUF(FIF)-163	LDV-047
Cement Pump Float	CPF-183	TRS-106

Timing

Event	Date/Time
Call Out	5/15/2022 13:30
Depart Facility	5/15/2022 15:45
On Location	5/15/2022 18:00
Rig Up Iron	5/15/2022 18:20
Job Started	5/15/2022 20:04
Job Completed	5/16/2022 12:45
Rig Down Iron	5/16/2022 13:00
Depart Location	5/16/2022 14:00

General Job Information

Metrics	Value
Well Fluid Density	9.2 lb/gal
Well Fluid Type	WBM
Rig Circulation Vol	45 bbls
Rig Circulation Time	0.5 hours
Calculated Displacement	36 bbls
Actual Displacement	36 bbls
Total Spacer to Surface	20 bbls
Total CMT to Surface	2.5 bbls
Well Topped Out	Yes
Top Out Volume	2.5 bbls

Job Details

Metrics	Value
Flare Prior to Job	No
Flare Prior to Job	0 units
Flare During Job	No
Flare During Job	0 units
Flare at End of Job	No
Flare at End of Job	0 units
Well Full Prior to Job	Yes
Well Fluid Density Into Well	9.2 lb/gal
Well Fluid Density Out of Well	9.2 lb/gal

Job Details (cont.)

Metrics	Value
BHCT	165 °F
BHST	198 °F

Water Analysis

Metrics	Value	Recommended
Water Source	Flat Tank	
Temperature	70 °F	50-80 °F
pH Level	8	5.5-8.5
Chlorides	0 mg/L	0-3000 mg/L
Total Alkalinity	180	0-1000
Total Hardness	125 mg/L	0-500 mg/L
Carbonates	140 mg/L	0-100 mg/L
Sulfates	<200 mg/L	0-1500 mg/L
Potassium	450 mg/L	0-3000 mg/L
Iron	0 mg/L	0-300 mg/L

Circulation

Lost Circulation Experienced
No

Job Execution Information

Fluid	Product	Function	Density (lb/gal)	Yield (ft ³ /sk)	Water Rq. (gal/sk)	Water Rq. (gal/bbl)	Volume (sks)	Volume (bbl)
1	Flush Ahead Plug-1	Flush	8.34			42.00		20.00
2	Plug-1: (5983-6083)	Plug	15.80	1.16	5.01		45.00	9.33
3	Plug-1 Displacement	Displacement	8.34			42.00		35.00
4	Flush Ahead Plug-2	Flush	8.34			42.00		20.00
5	Plug-2: (5165-6465)	Plug	15.80	1.16	5.01		200.00	41.48
6	Plug-2 Displacement	Displacement	8.34			42.00		30.00
7	Flush Ahead Plug-3	Flush	8.34			42.00		20.00
8	Plug-3: (1500-1650)	Plug	15.80	1.16	5.01		120.00	24.89
9	Plug-3 Displacement	Displacement	8.34			42.00		8.00
10	Flush Ahead Plug-4	Flush	8.34			42.00		20.00
11	Plug-4: (0-450)	Plug	15.80	1.16	5.01		375.00	77.78
12	Plug-4 Displacement	DisplacementFinal	8.34			42.00		1.00

Job Fluid Details

Fluid	Type	Fluid	Product	Function	Conc.	Uom
2	Plug	Plug-1: (5983-6083)	CLASS G	Cement	100.00	%
2	Plug	Plug-1: (5983-6083)	A-7P	Accelerator	2.00	%BWOB
5	Plug	Plug-2: (5165-6465)	CLASS G	Cement	100.00	%
5	Plug	Plug-2: (5165-6465)	A-7P	Accelerator	2.00	%BWOB
8	Plug	Plug-3: (1500-1650)	CLASS G	Cement	100.00	%
8	Plug	Plug-3: (1500-1650)	A-7P	Accelerator	2.00	%BWOB
11	Plug	Plug-4: (0-450)	CLASS G	Cement	100.00	%
11	Plug	Plug-4: (0-450)	A-7P	Accelerator	2.00	%BWOB

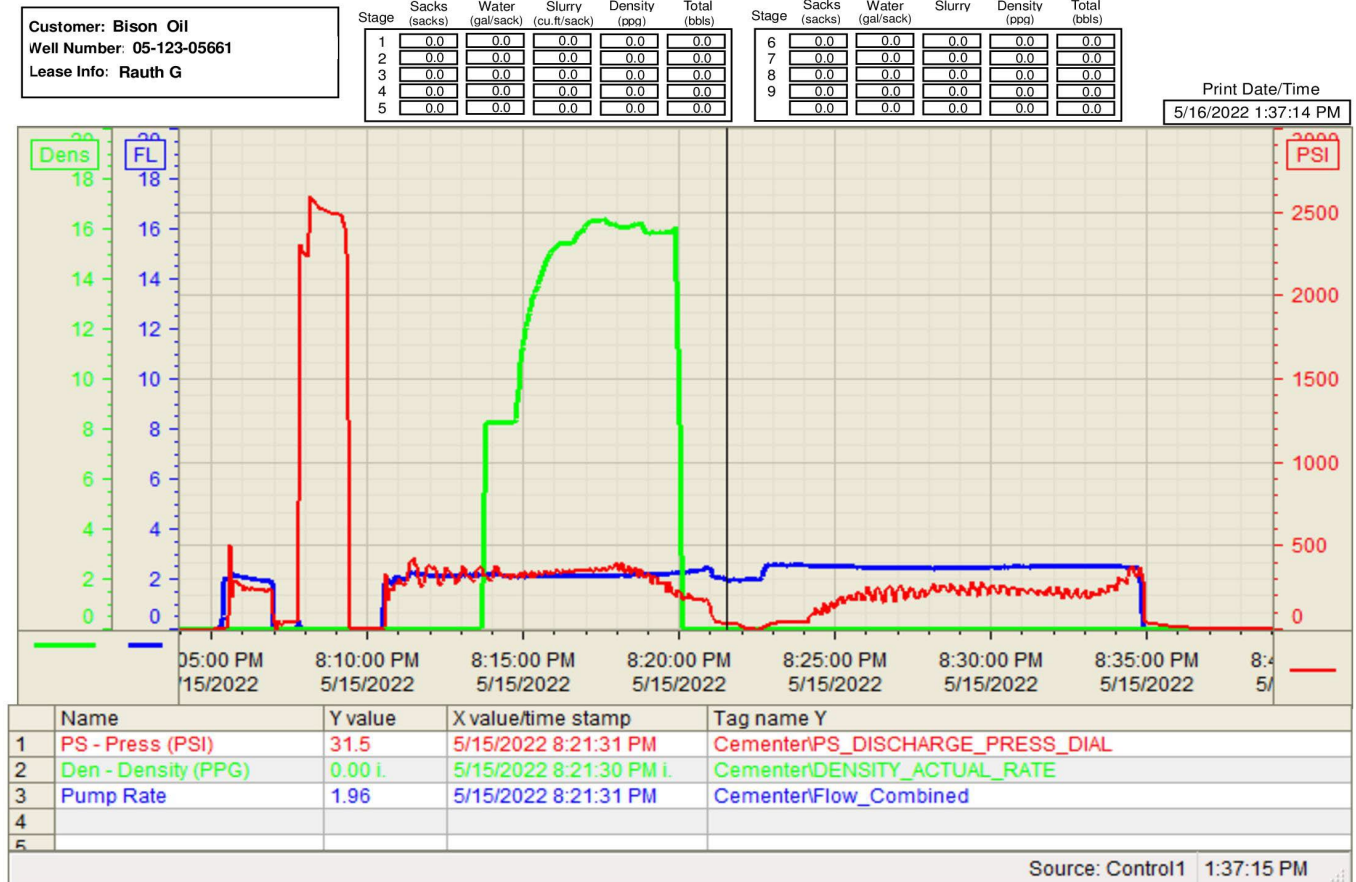
Job Logs

Line	Event	Date (MM/DD/YY)	Time (HH:MM)	Density (lb/gal)	Pump Rate (bpm)	Pump Volume (bbls)	Pipe Pressure (psi)	Comment
1	Call Out	5/15/2022	13:30					Customer requested crew for 17:30 on location time
2	Arrive On Location	5/15/2022	18:00					Crew escorted to location and meet with customer
3	Safety Meeting	5/15/2022	18:10					ACC has safety meeting over rigging up iron and hoses
4	Rig Up Iron	5/15/2022	18:20					ACC rigs up iron and hoses
5	Safety Meeting	5/15/2022	19:10					Safety meeting with ACC, rig crew and company man over job and hazards
6	Fill pumps and Lines	5/15/2022	20:04	8.33	2	3	400	Pump 3 bbls ahead fill lines
7	Pressure Test	5/15/2022	20:06	8.33	0.5	0.5	2600	Pressure test to 2500 PSI
8	Pump Spacer	5/15/2022	20:10	8.33	2	15.5	420	Pump 15.5 bbls of spacer ahead
9	Pump Cement	5/15/2022	20:16	15.8	2	9.3	500	Pump 9.3 bbls of 15.8 PPG cement (45 Sks, 1.16 Yield, 5.01 Gals/Sks, TOC 5677'
10	Pump Spacer	5/15/2022	20:16	8.33	2	1.5	130	Pump spacer behind
11	Pump Displacement	5/15/2022	20:21	9.2	2	32	122	Pump 32 bbls of WBM displacement
12	Shut Down	5/15/2022	20:33					Open release lines to pump no flow rig down swedge and 2" value
13	POOH	5/15/2022	20:35					Rig pulls 19 joints out to 5479'
14	Break Circulation	5/15/2022	21:07	9.2	5	20	200	Rig pumps and breaks circulation
15	Pump Spacer	5/15/2022	21:15	8.33	2	18.5	620	Pump 18.5 bbls of fresh water ahead
16	Pump Cement	5/15/2022	21:24	15.8	2	41	430	Pump 41 bbls of 15.8 PPG cement (200 Sks, 1.16 Yield, 5.01 Gals/Sks
17	Pump Spacer	5/15/2022	21:43	8.33	2	1.5	100	Pump 1.5 bbls of fresh water behind
18	Pump Displacement	5/15/2022	21:44	9.2	2	26	130	Pump 26 bbls of WBM displacement
19	Shut Down	5/15/2022	21:55					Shut down pumping open return lines on pump no flow rig down swedge and 2 " value
20	POOH	5/15/2022	22:20					Rig pulls out 15 joints, and breaks circulation to clean out tubing
21	Waiting	5/15/2022	22:30					Wait 6 hours to tag plug
22	Tag Plug	5/16/2022	04:15					Tagged 2nd plug at 4880' rig POOH to 1650'
23	Pump Spacer	5/16/2022	05:39	8.33	2	18	117	Pump 18 bbls of fresh water ahead
24	Pump Cement	5/16/2022	05:30	15.8	2	24.79	132	Pump 24.79 bbls of 15.8 PPG cement with 2% CC, 120 sks, 1.16 Yield, 5.01 Gals/Sks)
25	Pump Spacer	5/16/2022	06:04	8.33	2	1	121	Pump 1 bbls of spacer behind
26	Pump Displacement	5/16/2022	06:06	9.2	2	5	190	Pump 5 bbls of WBM displacement
27	Shut Down	5/16/2022	06:08					Shut down pumping open return lines on pump no flow rig down swedge and 2 " value
28	Waiting	5/16/2022	06:15					Rig pulls 10 joints and reverse circulation to clean tubing out waiting till 10:15 to tag plug
29	Tag Plug	5/16/2022	10:15					Tagged surface plug at 1430' trip out to 450' for top job
30	Pump Spacer	5/16/2022	11:15	8.33	2.5	10	40	Pump 10 bbls of fresh water ahead
31	Pump Cement	5/16/2022	11:13	15.8	2.5	36	100	Pump 36 bbls of 15.8 PPG 2% CC (176 Sks, 5.01 Gals/Sks, 1.16 Yield)
32	Spacer to Surface	5/16/2022	11:42	8.33	2.5	2	100	20 bbls into cement got fresh water to surface, swap over to cutting tanks

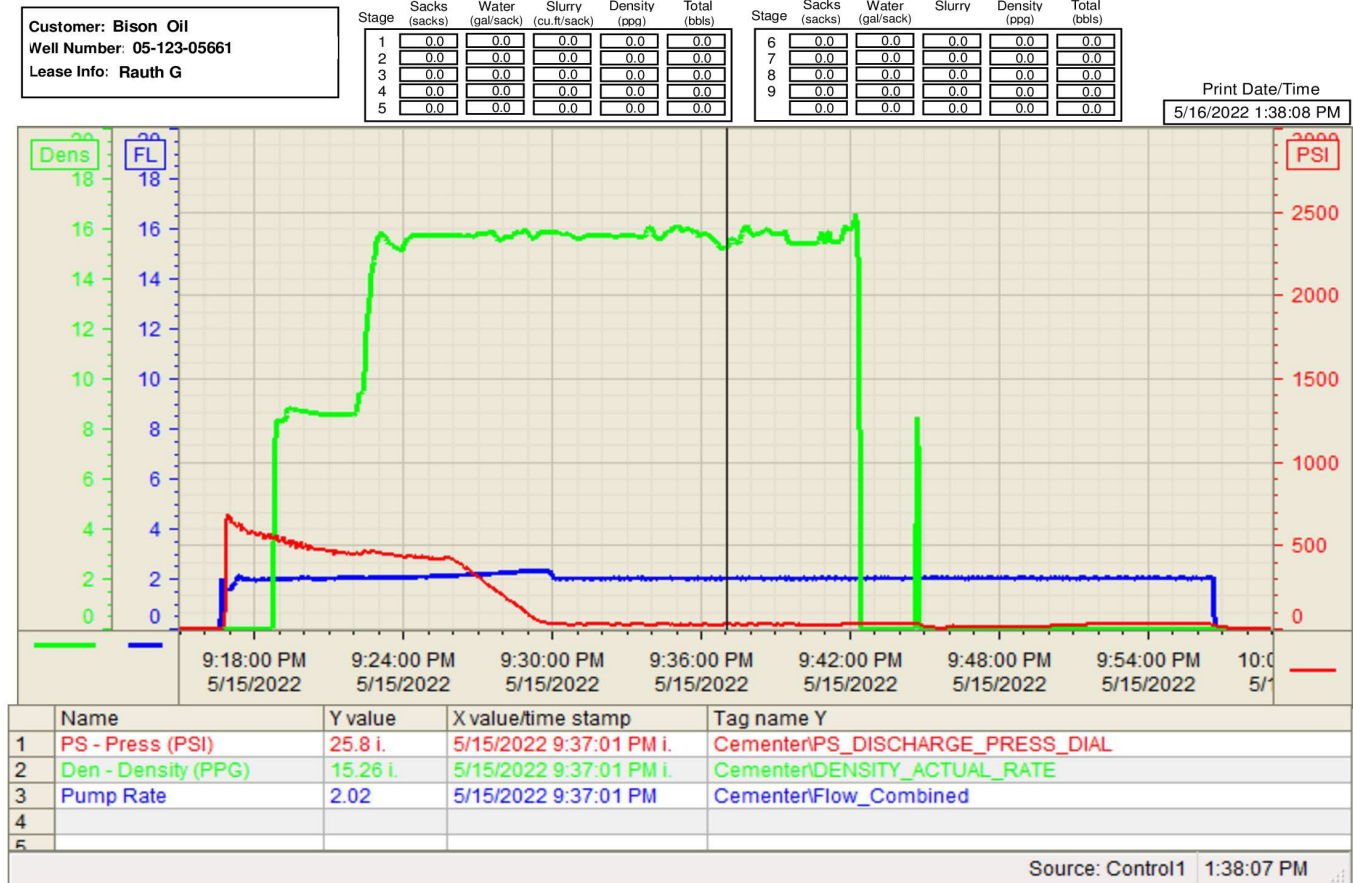
33	Shut Down	5/16/2022	11:50			36		Pump 36 bbls of cement got traces of cement to surface shut down for rig to POOH, rig down BOP and top off well
34	Top Off	5/16/2022	12:42	15.8	1	2.5	45	Pump 2.5 bbls of cement to top off well, (12 Sks, 1.16 Yield, 5.01 Gals/Sks)
35	Shut Down	5/16/2022	12:45					Shut down pumping
36	Safety Meeting	5/16/2022	12:50					ACC has safety meeting over rigging down iron and hoses
37	Rig Down Iron	5/16/2022	13:00					ACC rigs down iron and hoses
38	Depart Location	5/16/2022	14:00					ACC has joureny mangement and departs location

Pump Diagrams

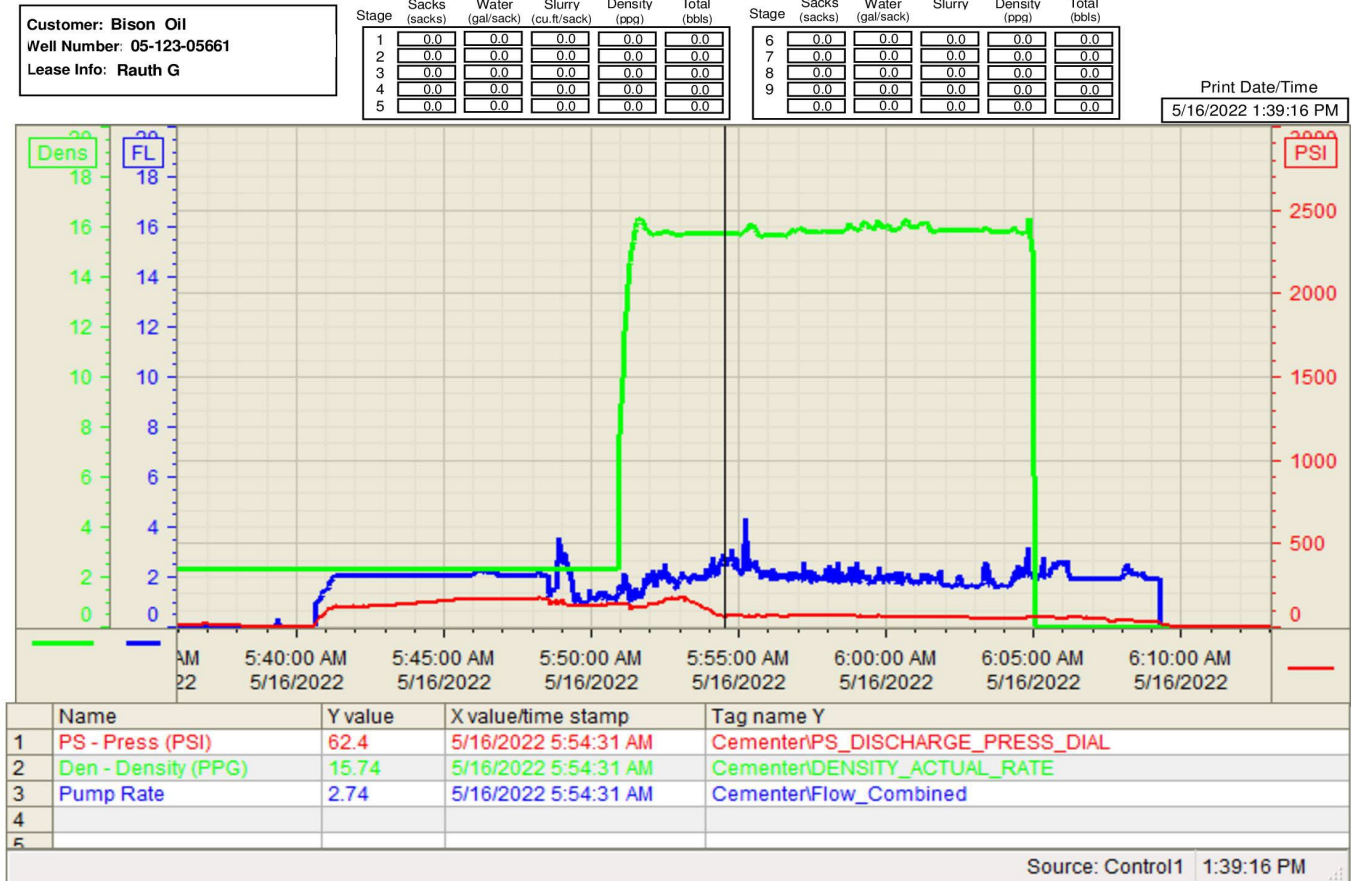
Plug 1:



Plug 2:



Plug 3:



Plug 4 and Top Out:

