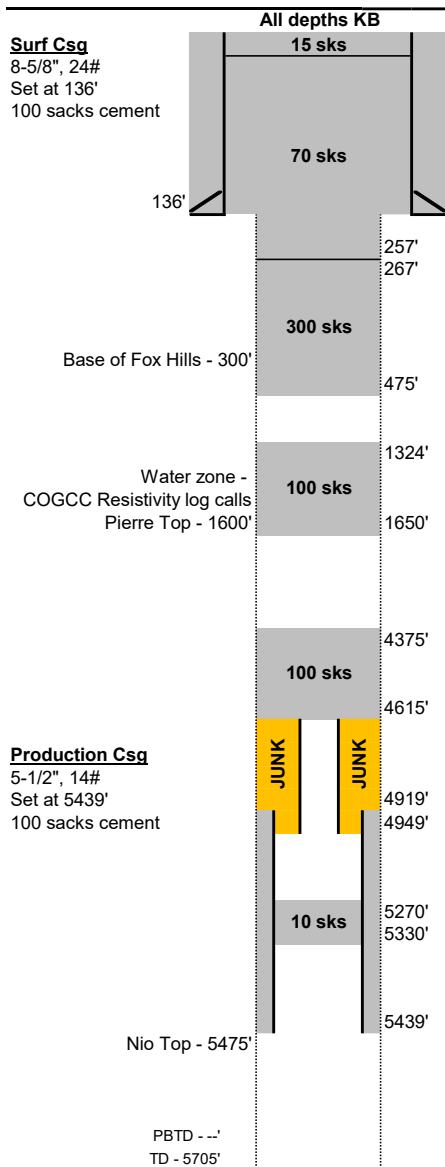




### Final - As Plugged Wellbore Schematic

Well Name: Alice Nay 1  
Location: 2310' FSL, 2310' FEL, NWSE Sec 14, T9N, R58W  
County: Weld  
API #: 05-123-05654  
Co-ordinates: 40.750555 / -103.829925  
Elevations: GROUND: 4647'  
KB: 4657'  
PBTD: --  
TD: 5705'

Date Prepared: 11/23/2021  
Last Updated: 6/16/2022  
Spud Date: 7/4/1959  
Completion Start Date: N/A  
Last Workover Date: N/A  
Prepared by: Jake Van Bramer  
Updated by: --



Hole Size  
Unknown  
0-136'

**Surface Casing:**  
Unknown Hole Size, assumed to be 12.25"  
Landed 8-5/8", 24# casing at 136'  
Cemented with 100 sks

**Production Casing:**  
Unknown Hole Size, assumed to be 7.875"  
Landed 5-1/2", 14# casing at 5439'  
Cemented with 100 sacks 50/50 pozmix  
Cut casing and pulled at 4919'

**Open Hole:**  
136'-4615', hole size unknown, likely 7-7/8"  
5439'-5705', hole size unknown, likely 7-7/8"

**Tubing:**  
2-7/8" P-110 tubing from 4615' to 4949'

**Rods:**  
None

**Perforations:**  
None

Unknown  
136'-5705'

**P&A Plugs:**  
1. 10 sks from 5270'-5330' (existing)  
2. 100 sks Class G (1.15 cuft/sk) from 4375'-4615' (TOC calculated)  
3. 100 sks Class G (1.15 cuft/sk) from 1324'-1650' (TOC tagged)  
4. 300 sks Class G (1.15 cuft/sk) from 267'-475' (TOC tagged)  
5. 70 sks Class G (1.15 cuft/sk) from 257' to surface  
6. 15 sks Top Off

**Additional Notes:**  
Hole was filled with thick drilling cable, wood, cement, and other junk from original P&A, caused workstring to get stuck at 534', chem cut tubing at 200' and freed it by pushing down to 4615', COGCC gave permission to leave in hole with 100 sack plug above it  
Unable to tag existing 10 sk plug at 5270'

**Formation Tops:**  
Niobrara 5475'

PBTD - --'  
TD - 5705'