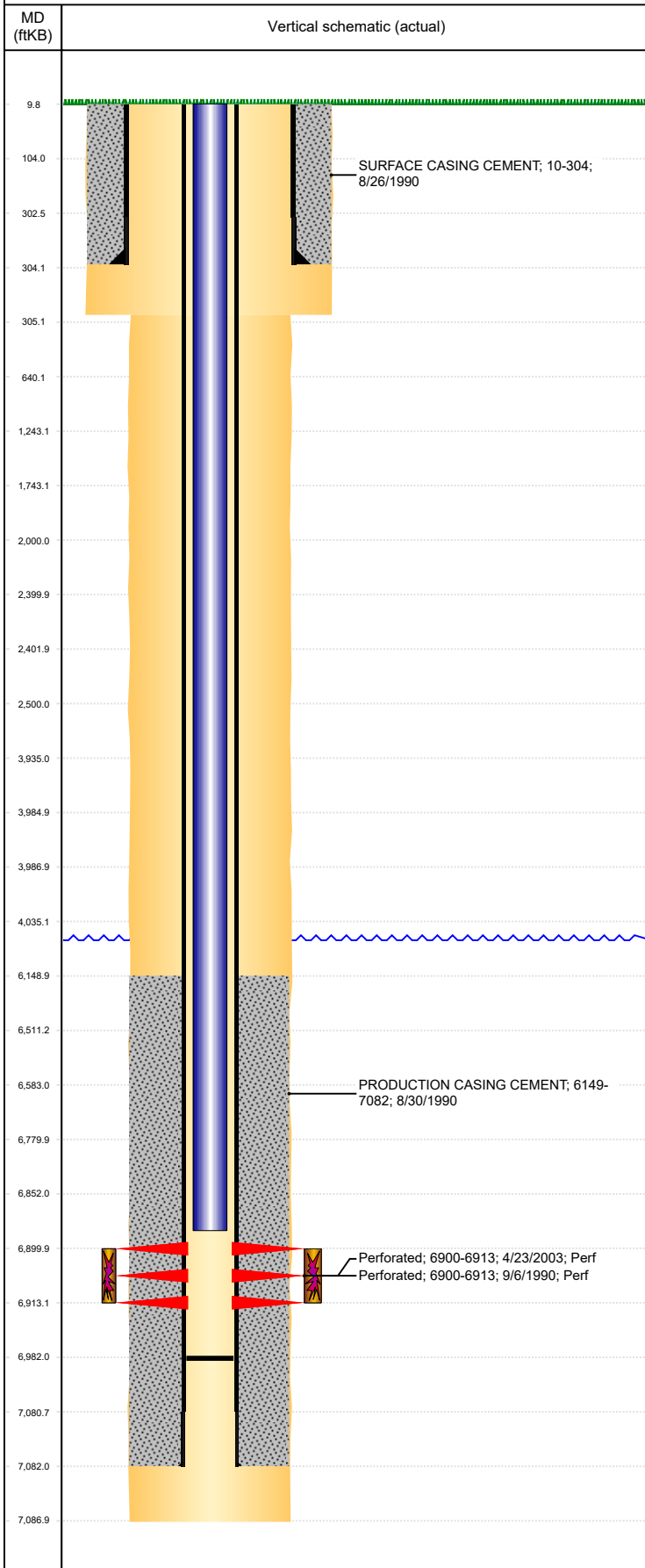




P&A Wellbore For State

Well Name: LINDSAY C33-14

Land, Original Hole, 6/29/2022 9:23:26 AM



Well Header									
Surface UWI 0512314700			Business Unit Rockies			Gov Auth Dist		Prod Tree Loc Land	
Orig. KB to Gnd (ft) 10.00		Original Spud Date 8/26/1990		Abandon Date		Well Sub-Status SI			High... N
Comment									
Surface Location (Congressional)									
Qtr 3 NE	Qtr 4 NE	Section 33	Twنشp 4	Twنش... N	Range 64	Rng E/... W	Latitude (°) 40.27439192 6	Longitude (°) -104.548877818	
Wellbore Sections									
Section Des			Hole Size (in)			Act Top (ftKB)		Act Btm (ftKB)	
SURFACE			12 1/4			10.0		305.0	
PRODUCTION			7 7/8			305.0		7,087.0	
Casing Strings									
Csg Des			Run Date		OD (in)	Wt/Len (lb/ft)	Grade	Top Depth (MD) (ftKB)	Set Depth (MD) (ftKB)
Surface			8/26/1990		8 5/8	24.00	J-55	10	304
Production Casing			8/30/1990		2 7/8	6.50	N-80	10	7082
Cement									
Des					Start Date		Top (ftKB)		Btm (ftKB)
SURFACE CASING CEMENT					8/26/1990		10.0		304.0
PRODUCTION CASING CEMENT					8/30/1990		6,149.0		7,082.0
Zone Statuses									
Zone Name		Status Date	Status	Fluid Type	Job			Prod Method	
CODELL		4/29/2003	PR		RE-FRAC, 4/21/2003 00:00			Flowing	
CODELL		6/11/2009	PR						
Perforation Data									
Linked Zone			Explosive Type	Entered Shot Total	Top (ftKB)		Btm (ftKB)		Date
CODELL, Original Hole				18	6,900.0		6,913.0		9/6/1990
CODELL, Original Hole				56	6,900.0		6,913.0		4/23/2003
Stimulation Intervals									
Zone				Start Date		Top (ftKB)		Btm (ftKB)	
CODELL, Original Hole				9/8/1990		6,900.0		6,913.0	
CODELL, Original Hole				4/28/2003		6,900.0		6,913.0	
Other In Hole									
Run Date		Des			Make		OD (in)	Top (ftKB)	Btm (ftKB)
Logs									
Date		Type					Depth Top (MD) (ftKB)		Btm (ftKB)
8/30/1990		INDUCTION					302		7,085.0
9/5/1990		CBL/CCL/GR					6,050		7,000.0
Plug Back Total Depths									
Date		Type			Com				PBTD (ftKB)
8/30/1990		GUIDE SHOE							7,005
8/19/2010		FILL			70' OF RATHOLE. REMAINDER OF FILL HARD.				6,982