

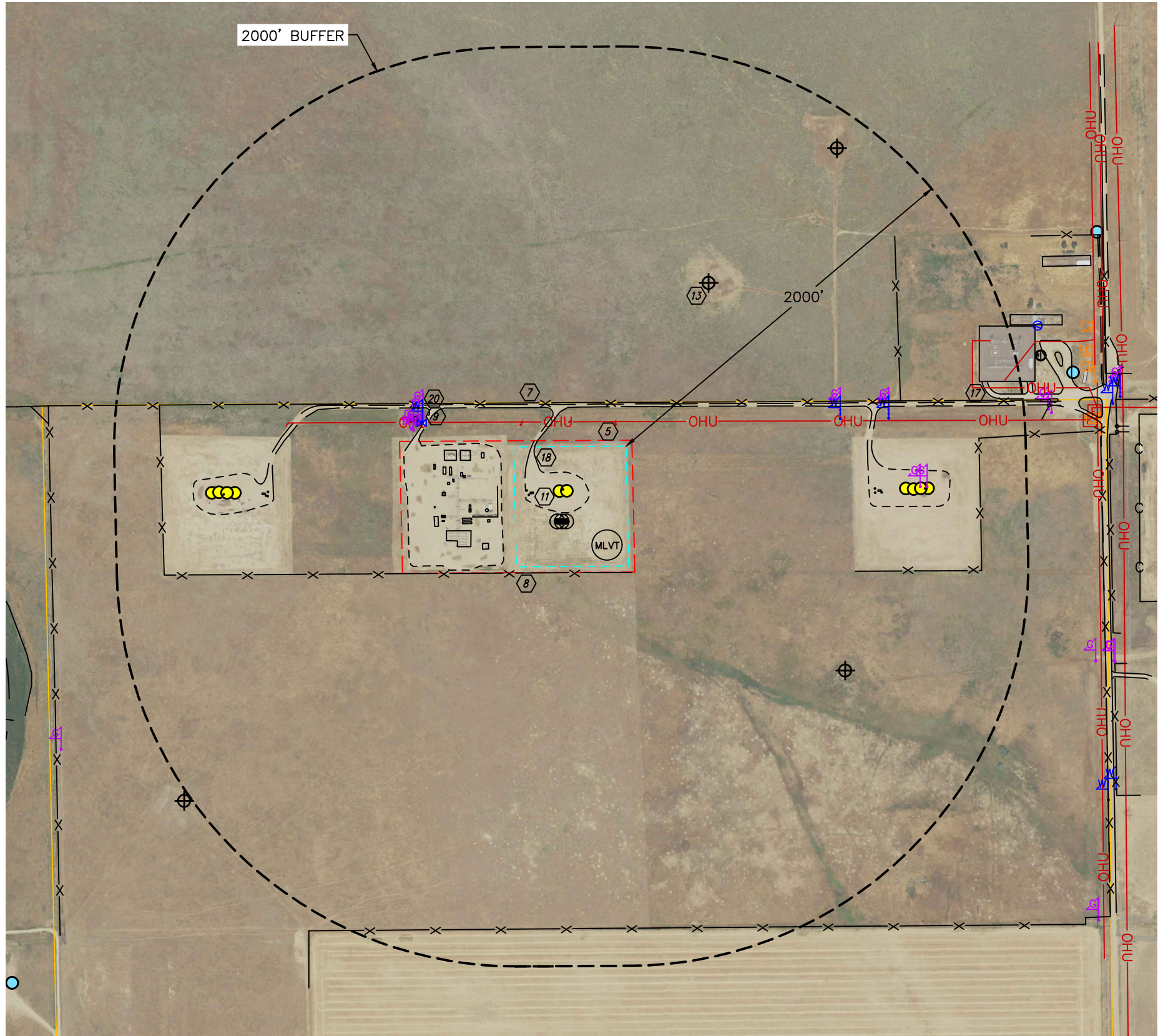


Lat40°, Inc. 6250 W. 10th Street, Unit 2, Greeley, CO 970-515-5294

LOCATION DRAWING

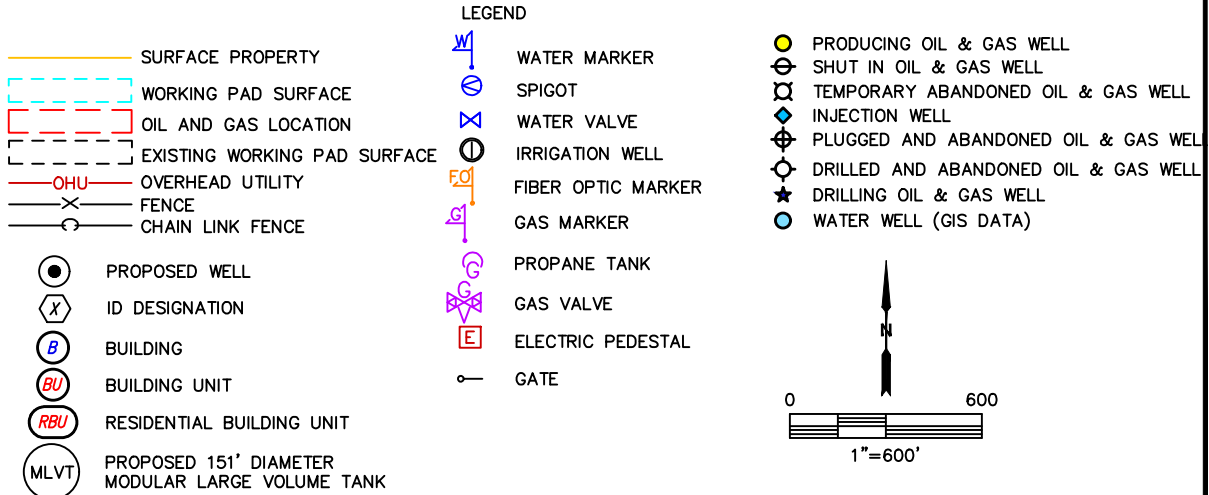
Y16-28 PAD
NOBLE ENERGY INC

Q: NW/4,NE/4
SECTION: 16
TOWNSHIP: 2N
RANGE: 64W
6TH. P.M.
WELD, CO



NOTE:
1. SEE HYDROLOGY MAP FOR SURFACE WATER IMPROVEMENTS.
2. VISIBLE IMPROVEMENTS SHOWN AND LISTED HEREON THAT ARE LYING OUTSIDE THE SURFACE PROPERTY MAY HAVE BEEN OBTAINED FROM THE AERIAL PHOTO AND OTHER PUBLICLY AVAILABLE DATA. THE ACCURACY AND COMPLETENESS OF SAID IMPROVEMENTS MAY NOT HAVE BEEN VERIFIED BY LAT40, INC. EXISTING CONDITIONS MAY DIFFER FROM WHAT IS SHOWN.

ID	IMPROVEMENT	DISTANCES/BEARING (MEASURED FROM WORKING PAD SURFACE)
B	BUILDINGS	NA
BU/RBU	BUILDING UNIT/RESIDENTIAL BUILDING UNITS	NA
1	HIGH OCCUPANCY BUILDING UNITS	NA
2	SCHOOL FACILITY	NA
3	DESIGNATED OUTSIDE ACTIVITY AREA	NA
4	PUBLIC ROAD	NA
5	ABOVE GROUND UTILITY	109' N, 1759' NE, 1925' NE
6	RAILROAD	NA
7	PROPERTY LINE	220' N
8	FENCES	31' S, 219' N, 471' NW, 498' NW, 516' NW, 1134' SE, 1395' NE, 1798' NE, 1812' S
9	PIPELINES/PIPELINE MARKERS/FLOWLINE	478' NW, 486' NW, 509' NW, 512' NW, 530' NW, 1084' NE, 1087' NE, 1325' NE, 1327' NE, 1467' E, 1502' E
10	MINES	NA
11	PRODUCING/DRILLING OIL AND GAS WELLS, EXISTING WORKING PAD SURFACE	2-INSIDE LOCATION, 1471' E, 1396' E, 1435' E, 1507' E, 63' W, 1400' W, 1439' W, 1478' W, 1514' W
12	INJECTION WELLS AND FACILITIES	NA
13	PLUGGED/ABANDONED/SHUT IN OIL AND GAS WELLS	916' NE, 1203' SE, 1827' NE
14	WATER WELLS - GIS DATA	NA
15	WATER WELLS - SURVEYED LOCATION	NA
16	SEWER/SEPTIC MANHOLES	NA
17	PRIVATE ROAD	1810' NE
18	EXISTING OIL AND GAS ACCESS	1-INSIDE LOCATION, 198' N, 394' NW, 1208' E
19	UTILITIES - ELECTRIC	NA
20	UTILITIES - WATER	473' NW, 475' NW, 1081' NE, 1322' NE
21	UTILITIES - TELEPHONE	NA
22	UTILITIES - FIBER OPTIC	NA
23	UTILITIES - PROPANE TANK	NA
24	UTILITIES - OTHER	NA
25	BRIDGES	NA
26	MISCELLANEOUS	NA



DATA SOURCE: COGCC

DATE: 3/8/2022
PROJECT#: 2022033