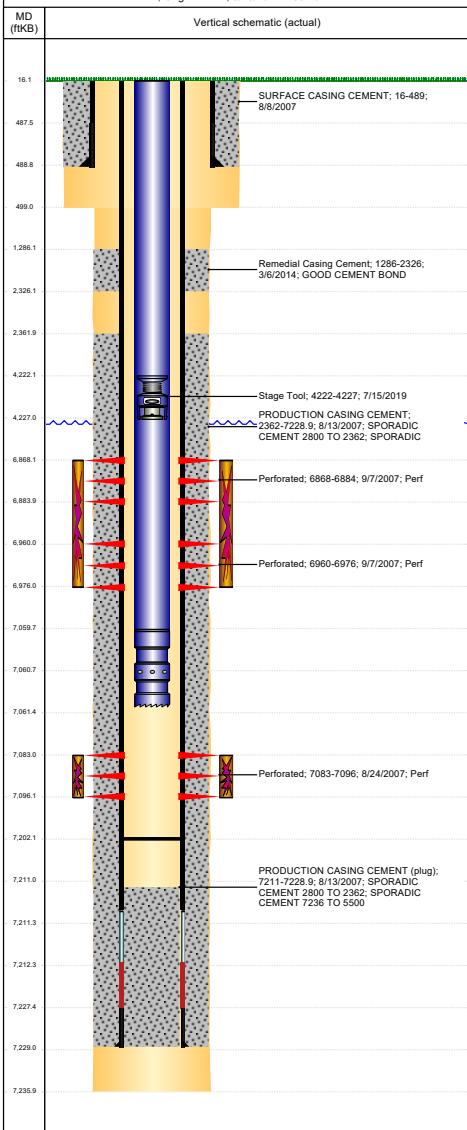




P&A Wellbore For State

Well Name: FERGUSON B23-08

Land, Original Hole, 6/28/2022 2:03:20 PM



Well Header										
Surface UWI 0512325033			Business Unit Rockies		Gov Auth Dist		Prod Tree Loc Land			
Orig. KB to Gnd (ft) 16.00		Original Spud Date 8/7/2007		Abandon Date		Well Sub-Status PR		High Pre N		
Comment										
Surface Location (Congressional)										
Quarter 3	Quarter 4	Section	Township	Township N	Range	Rng E/W	Latitude (°)	Longitude (°)		
NE	NE	23	5	N	64	W	40.391609202	-104.508689244		
Wellbore Sections										
Section Des			Hole Size (in)			Act Top (ftKB)		Act Btm (ftKB)		
SURFACE			12 1/4			16.0		499.0		
PRODUCTION			7 7/8			499.0		7,236.0		
Casing Strings										
Csg Des		Run Date		OD (in)		Wt/Len (lb/ft)		Grade		
Surface		8/8/2007		8 5/8		24.00		J-55		
Production Casing		8/13/2007		4 1/2		11.60		M-80		
								Top Depth (MD) (ftKB)		
								Set Depth (MD) (ftKB)		
Cement										
Des				Start Date		Top (ftKB)		Btm (ftKB)		
SURFACE CASING CEMENT				8/8/2007		16.0		499.0		
PRODUCTION CASING CEMENT				8/13/2007		2,362.0		7,228.9		
Remedial Casing Cement				3/6/2014		1,286.0		2,326.0		
Zone Statuses										
Zone Name		Status Date		Status		Fluid Type		Job		
NIOBRARA		2/10/2015		TA				HORIZONTAL WELL PREP. 2/9/2015 06:00		
NIOBRARA		5/1/2015		PR				HORIZONTAL WELL PREP. 2/9/2015 06:00		
CODELL		2/10/2015		TA				HORIZONTAL WELL PREP. 2/9/2015 06:00		
CODELL		5/1/2015		PR				HORIZONTAL WELL PREP. 2/9/2015 06:00		
Perforation Data										
Linked Zone		Explosive Type		Entered Shot Total		Top (ftKB)		Btm (ftKB)		
NIOBRARA, Original Hole		A		64		6,868.0		6,884.0		
NIOBRARA, Original Hole		B		64		6,960.0		6,976.0		
CODELL, Original Hole				52		7,083.0		7,096.0		
								Date		
Stimulation Intervals										
Zone				Start Date		Top (ftKB)		Btm (ftKB)		
NIOBRARA, Original Hole				9/7/2007		6,868.0		6,976.0		
CODELL, Original Hole				9/7/2007		7,083.0		7,096.0		
Other In Hole										
Run Date		Des			Make		OD (in)		Top (ftKB)	
7/15/2019		Stage Tool					2		4,222.0	
									Btm (ftKB)	
									4,227.0	
Logs										
Date		Type					Depth Top (MD) (ftKB)		Btm (ftKB)	
8/12/2007		COMPENSATED DENSITY					2,450		7,215.0	
8/12/2007		INDUCTION					489		7,235.0	
8/23/2007		CBL/CCL/GR					2,230		7,172.0	
3/11/2014		CBL/CCL/GR					16		2,500.0	
Plug Back Total Depths										
Date		Type		Com				P8TD (ftKB)		
3/12/2014		PLUG REMNANTS		PUSHED REMAINDER OF PLUG TO 7186				7,186		
5/4/2015		FILL		104' OF RAT HOLE DID NOT C/O				7,202		