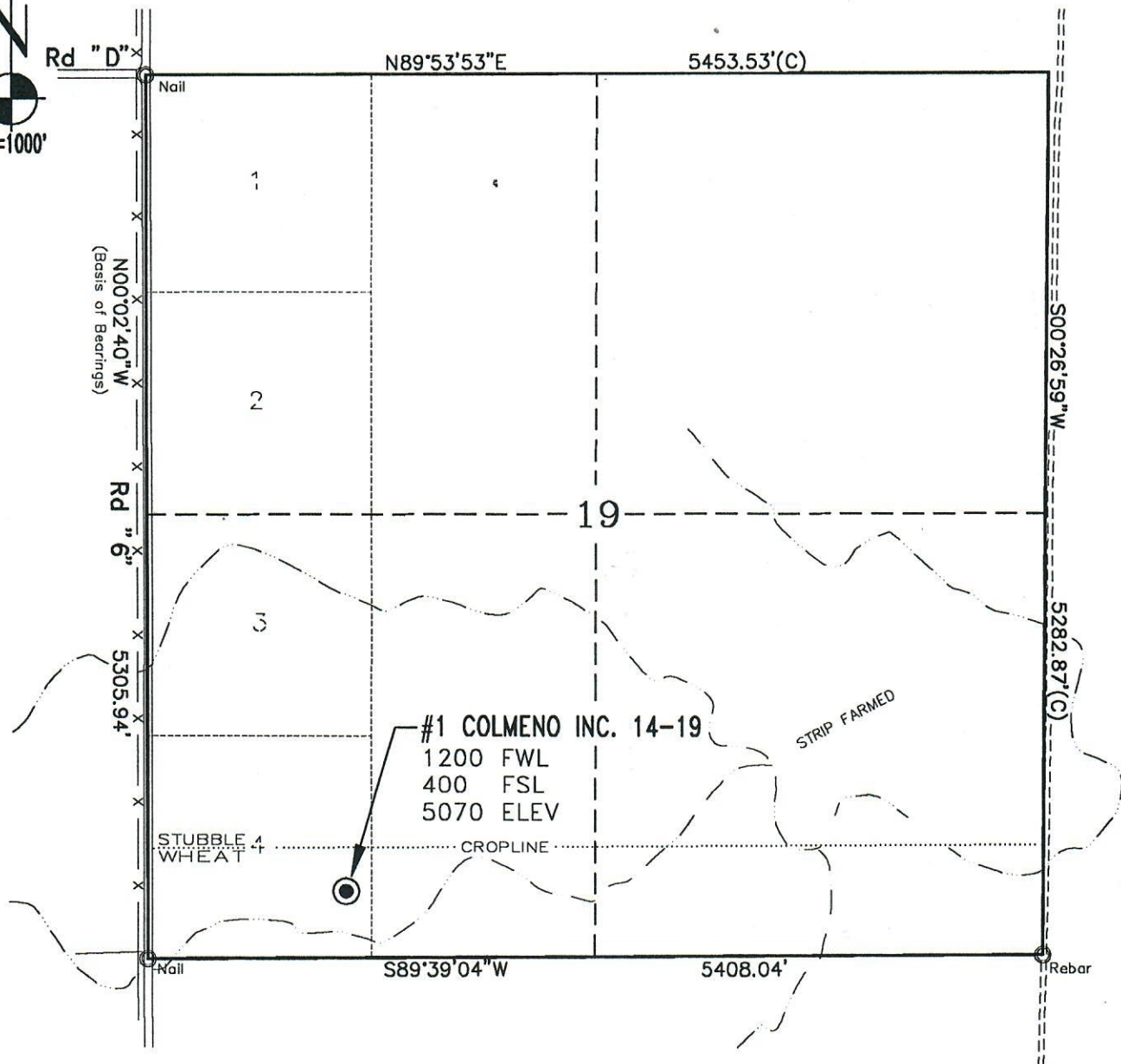




# SECTION 19 TOWNSHIP 11S RANGE 50W



## NOTES

1. Basis of elevation is a USGS spot elevation of 5088 at the Southwest corner of section 19.
2. All dimensions and section lines shown hereon are based on field measurements of existing monuments and/or physical evidence found in the field, unless otherwise indicated.
3. Physical features shown hereon are for graphical representation only.
4. This is not a land survey or land survey plat.

## LEGEND

- = IMPROVED ROAD
- = STREAM OR DRAINAGE
- (C) = CALCULATED DIMENSION
- 3 = USGLO LOT NUMBER



JOB	94053
DATE	4/25/94
CREW	EJG/WLF
TDS/RW5	SPEAKF9
CONTROL	SPEAKER
DRAWN	DCC
DWG #	94053

Revised May 18, 1994



**GEO SURV**  
LAND SURVEYORS  
P.O. BOX 194  
LAFAYETTE  
COLO - 80026  
303-666-0379

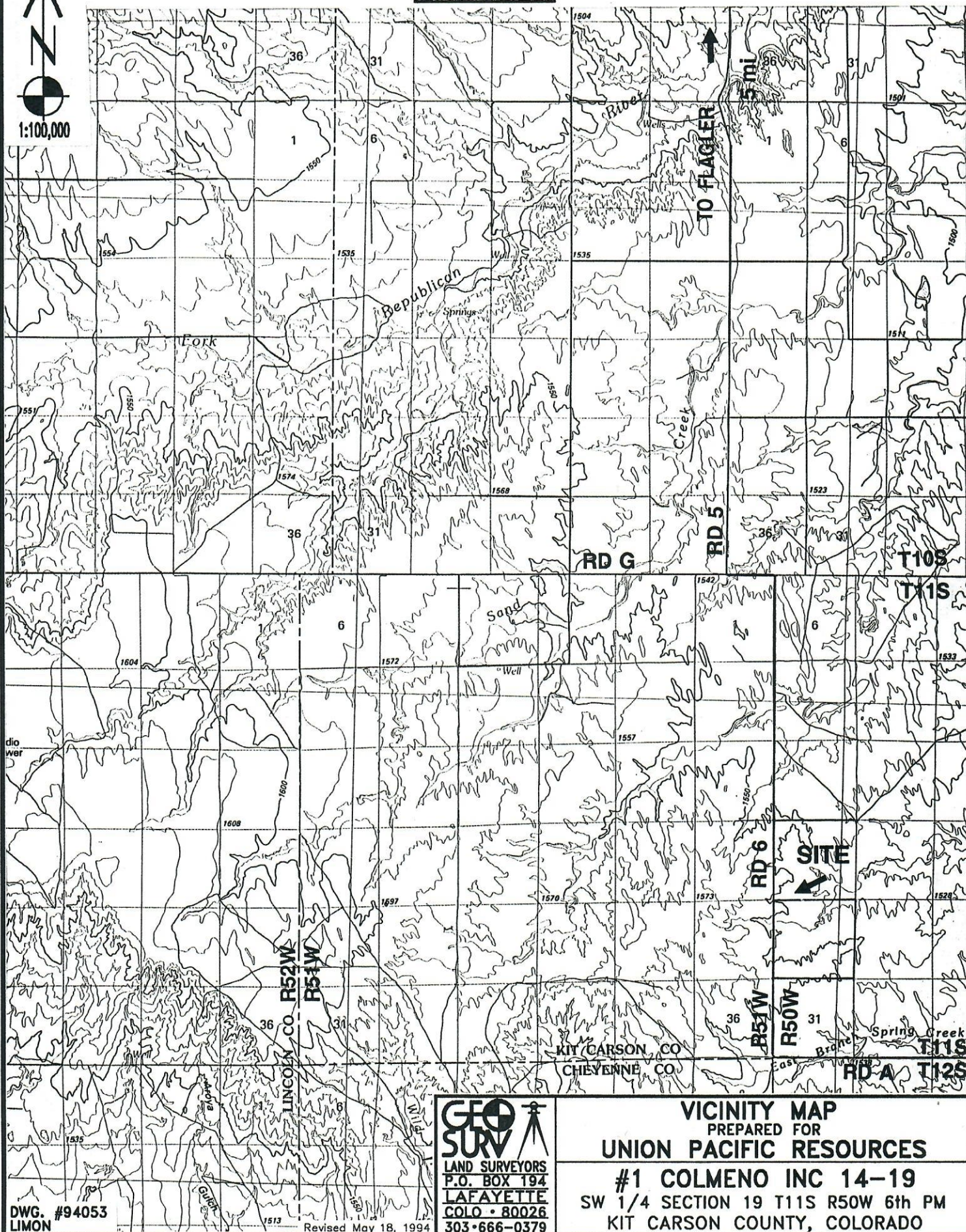
**WELL LOCATION MAP**  
PREPARED FOR  
**UNION PACIFIC RESOURCES**  
**#1 COLMENO INC 14-19**  
SW 1/4 SECTION 19 T11S R50W 6th PM  
KIT CARSON COUNTY, COLORADO



# EXHIBIT A



1:100,000



DWG. #94053  
LIMON

Revised May 18, 1994

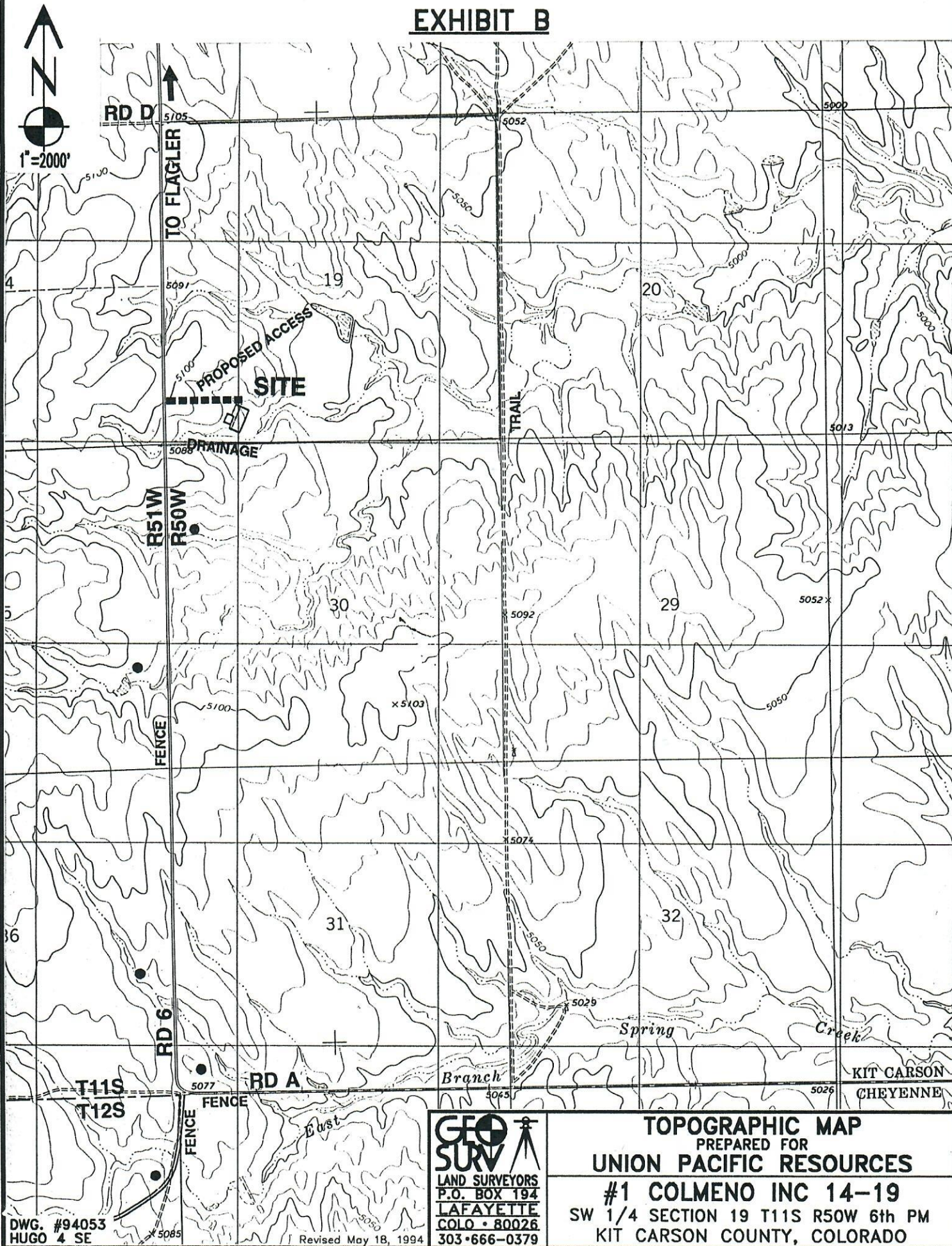
**GEO SURV**  
LAND SURVEYORS  
P.O. BOX 194  
LAFAYETTE  
COLO • 80026  
303-666-0379

**VICINITY MAP**  
PREPARED FOR  
**UNION PACIFIC RESOURCES**

**#1 COLMENO INC 14-19**  
SW 1/4 SECTION 19 T11S R50W 6th PM  
KIT CARSON COUNTY, COLORADO



# EXHIBIT B



DWG. #94053  
HUGO 4 SE

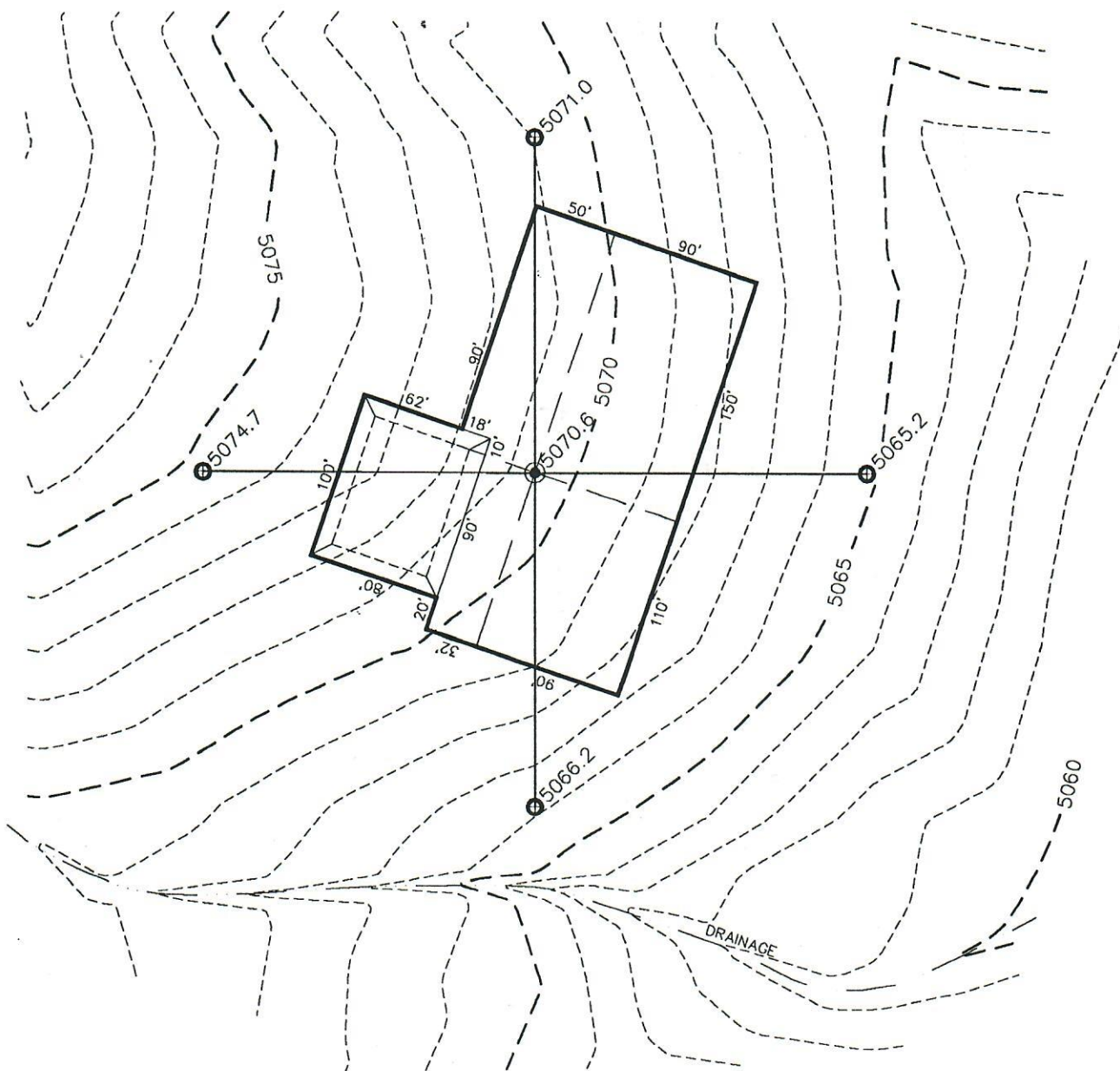
Revised May 18, 1994

**GEO SURV**  
LAND SURVEYORS  
P.O. BOX 194  
LAFAYETTE  
COLO • 80026  
303 • 666-0379

**TOPOGRAPHIC MAP**  
PREPARED FOR  
**UNION PACIFIC RESOURCES**  
**#1 COLMENO INC 14-19**  
SW 1/4 SECTION 19 T11S R50W 6th PM  
KIT CARSON COUNTY, COLORADO



# EXHIBIT "C3"



100 0 100 200  
GRAPHIC SCALE IN FEET

JOB	94053
DATE	4/26/94
CREW	RDT/WLF
IDS/RW5	SPEAKE10
CONTROL	SPEAKER
DRAWN	DCC
DWG #	94053C3

Revised May 18, 1994

**GEO SURV**  
LAND SURVEYORS  
P.O. BOX 194  
LAFAYETTE  
COLO • 80026  
303-666-0379

**PROPOSED PAD LAYOUT**  
PREPARED FOR  
**UNION PACIFIC RESOURCES**

**#1 COLMENO INC 14-19**  
SW 1/4 SECTION 19 T11S R50W 6th PM  
KIT CARSON COUNTY, COLORADO