

Vision Energy, LLC

WELL NAME Calf Canyon 19-1
LOCATION NWNW Sec 19 T6S R101W 6 PM
GPS 39.523752, -108.705081 **PDOP**
GPS OPERATOR **DATE**
FEDERAL LEASE No. COC 10377

FIELD Calf Canyon
COUNTY Garfield
API # 05-045-06466
FORMATION Mesa Verde
COGCC LOCATION ID 322522
COGCC FACILITY ID 210708
ELEVATION 6158'

CASING

SURFACE
SIZE & WT 8 5/8" 24#
SET @ 602'
HOLE SIZE 12 1/4"
CEMENT 158 sxs
TOC @ surface 0

PRODUCTION

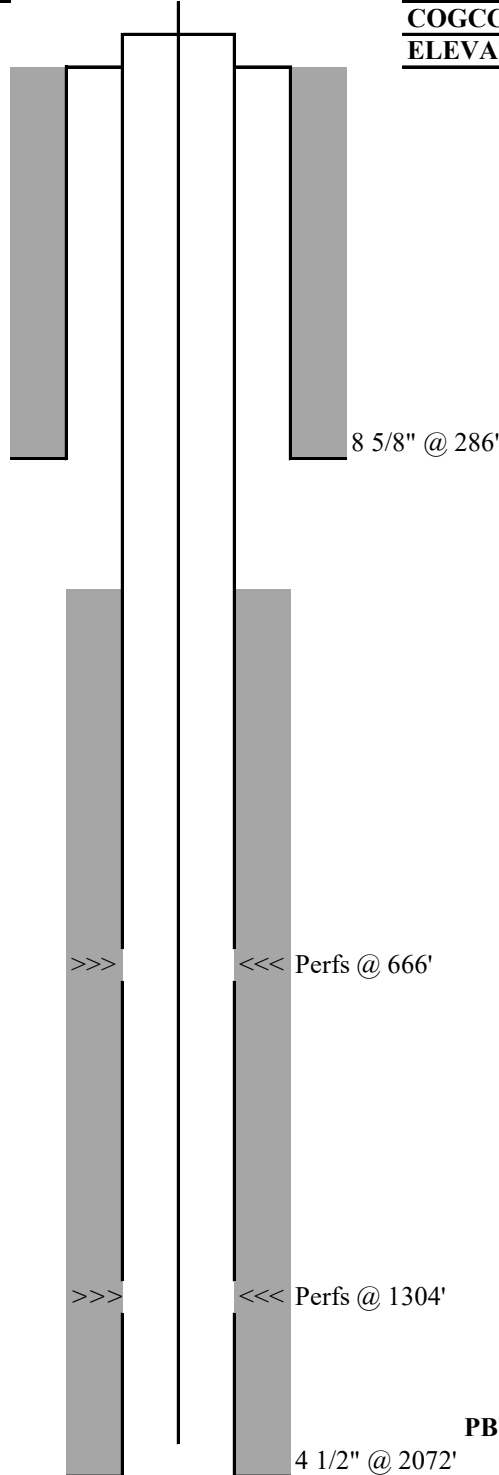
SIZE & WT 4 1/2"
SET @ 2052'
HOLE SIZE 7 7/8"
CEMENT 490 sxs
TOC @ 360'

PERFORATIONS

666' - 680' 56 shots
 1304' - 1316' 48 shots

FORMATION TOPS

Mesaverde 665'



PBTD 1970

4 1/2" @ 2072'

TOTAL DEPTH 2072'

Operator # 10770
Proposed P&A Wellbore Diagram

Proposed P&A Wellbore Diagram

FIELD	Calf Canyon
COUNTY	Garfield
API #	05-045-06466
FORMATION	Mesaverde
COGCC LOCATION ID	322522
COGCC Facility ID	210708

Steel marker plate w/ weep hole and well info

**Est 15 sxs (3.15bbl) API cement / 50' (0.8bbl)
to surface inside the 4½" and
50' (2.2bbl) in 4½" X 8⅝" annulus**

8⁵/₈" @286'

35 sxs (7.36bbl) API cement 336'-236'

100' (5.76bbl) in annulus/100' (1.6bbl) inside Perforations @336'.

TOC 359' CBL

Calc. TOC @ surface

CBL TOC @ 359'

@ NA

666'-680'	56 holes
-----------	----------

Mesaverde surface

CIBP @ 570 w/ 50' (0.8bbl) cement on top
666'-680'

TOTAL DEPTH 2072'

Plugging Procedure

Federal (Calf Canyon) 19-1

Calf Canyon Field, Garfield County, CO.

NWNW Sec.19 T6S R101W 6PM

COC 13276

API # 05-045-06466

May 2022

1. Conduct Bradenhead test and fill out Form 17 Prior to MIRU
2. MIRU. Monitor surface casing during operations
3. Set a 4½" CIBP at 570'. Spot a minimum of 50' (0.8bbl) of cement on top of plug
4. Pressure test 4½" casing to 300 psig for 15 minutes. Notify Jim Annable (BLM) and Aaron Katz for additional plugging requirements if test is unsuccessful
5. Perforate the 4½" casing at 336'.
6. Mix and pump balanced 35sx (7.36bbl) 15.6 ppg API cement plug. Place 100' (5.76bbl) of cement in the 4½" annulus from 336' to 236' and 100' (1.6bbl) cement inside the 4½" casing from 336' to 236'
7. WOC. Tag the cement inside the 4½". Spot additional cement if the top is below 236'.
8. Excavate around surface casing and cut off casing 4' below grade.
9. Top out the 4½" and 4½" X 8⅝" annulus with cement from 50' back to surface. Estimate 15 sacks (3.15bbl) of cement.
10. Weld a steel marker plate with weep hole onto the casing stub. The marker plate is to be inscribed with the following information:

Vision Energy, LLC

Federal (Calf Canyon) 19-1

COC 13276

NWNW Sec.19 T6S R101W 6PM

0504506466

Regulatory Contacts:

BLM – Jim Annable O: 970.876.9033 C: 970.930.7188

COGCC – Aaron Katz O: 303.894.2100 ext. 5691 C: 970.765.6300