

BHTEMP_Src	BOREID	BOTTEMP	CASEOD	CASETHCK	CASEWGHT	MAXAMPL	MINAMPL
TEMP	in 8.75	degF 100	in 5.5	in 0.408	lb/ft 20	mV 71.9	mV 1
MINATTN	PERFS	PPT	SRFTEMP	TDEPTH			
db/ft 0.8	No	usec 0	degF 0	ft 0			

Variable Description

BHTEMP_Src : BHTEMP Input Source Selector
 BOREID : Borehole I.D.
 BOTTEMP : Bottom Hole Temperature
 CASEOD : Casing O.D.
 CASETHCK : Casing Thickness
 CASEWGHT : Casing Weight
 MAXAMPL : Maximum Amplitude

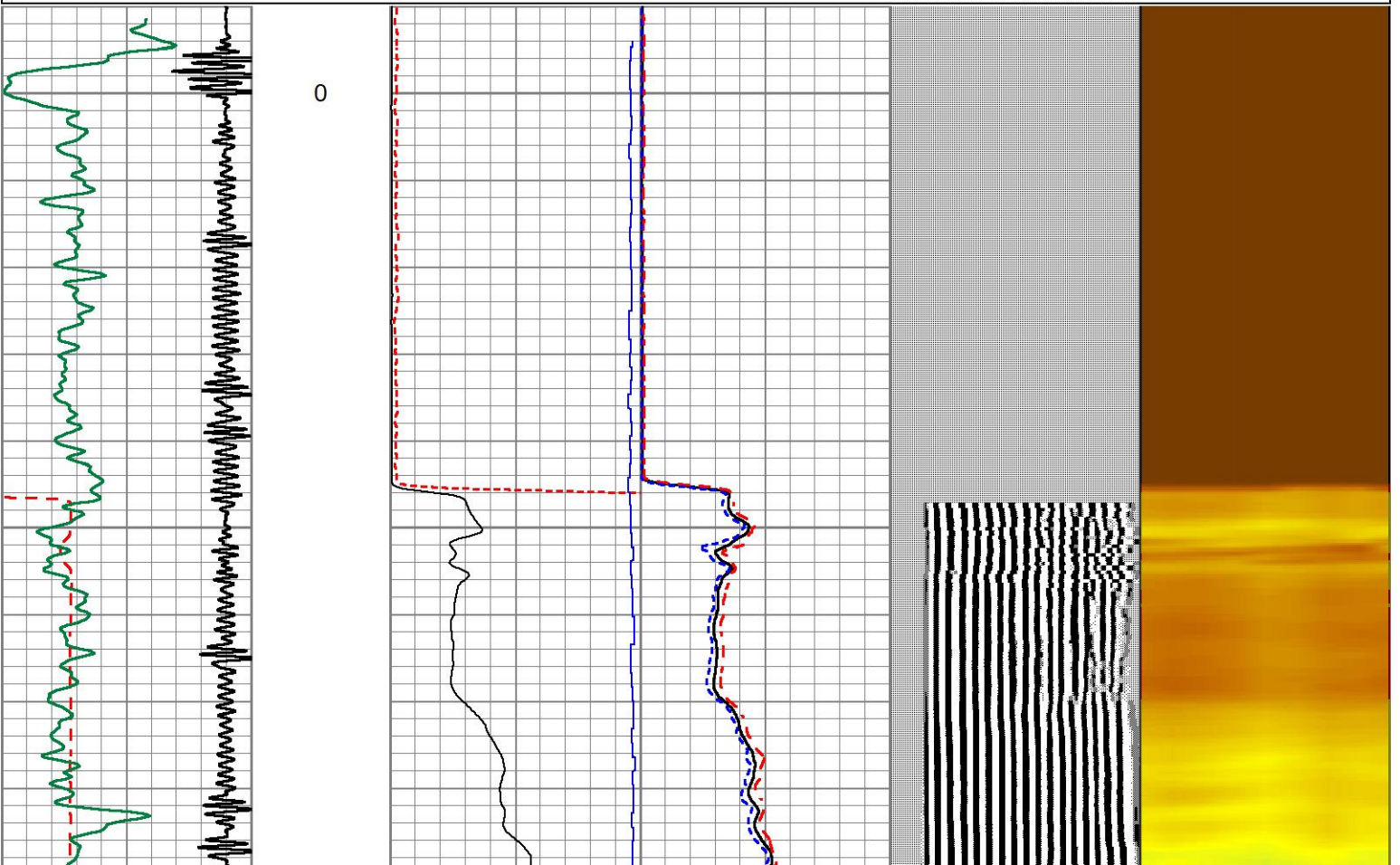
MINAMPL : Minimum Amplitude
 MINATTN : Minimum Attenuation
 PERFS : Perforation Flag
 PPT : Predicted Pipe Time
 SRFTEMP : Surface Temperature
 TDEPTH : Total Depth

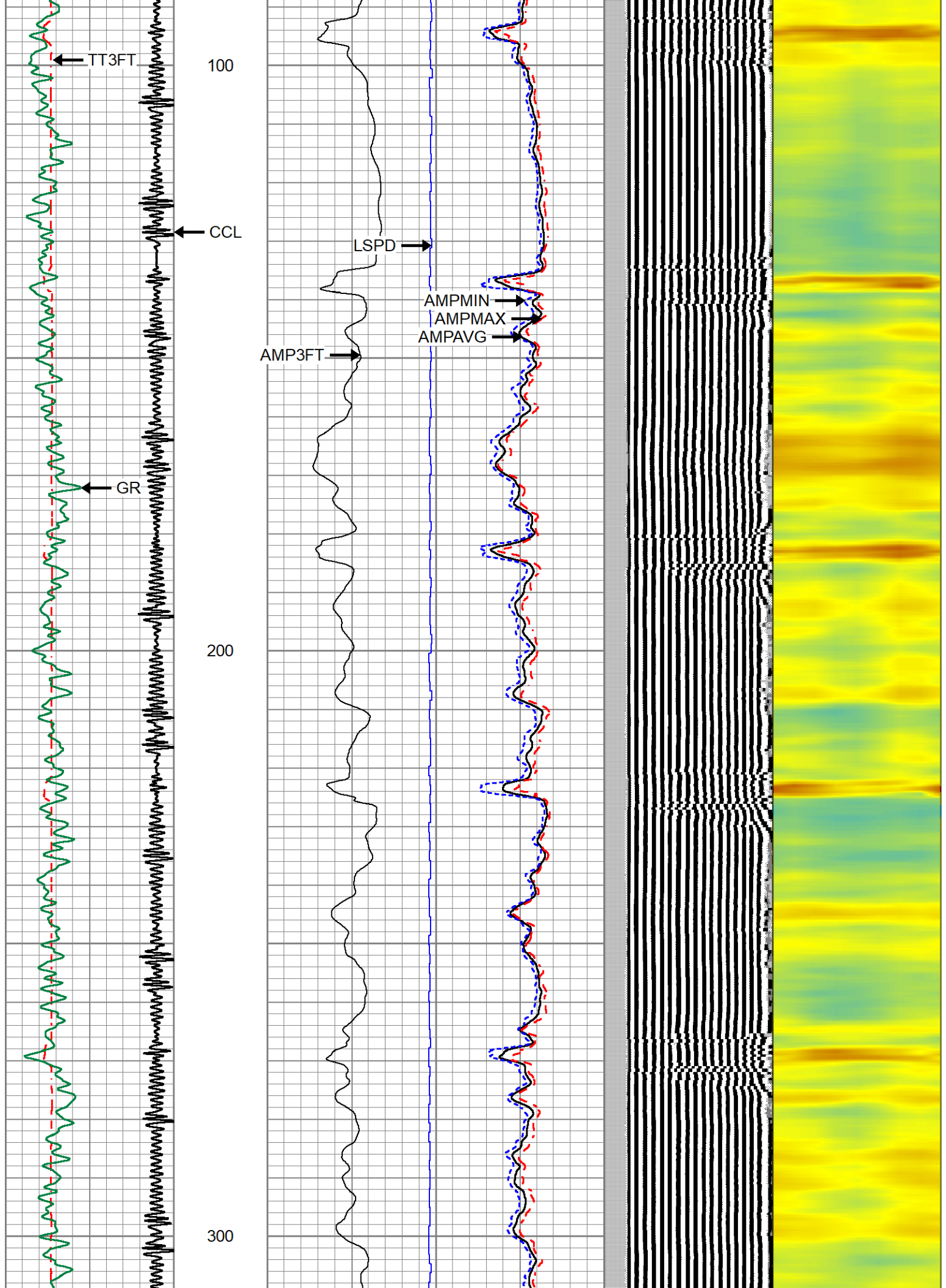


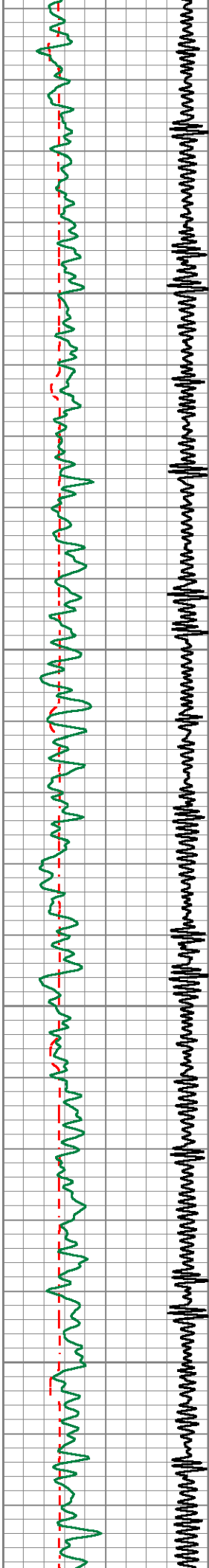
MAIN PASS

Database File verdadresources_timbro fed 1931 07h_0512351204_061422_scbl.db
 Dataset Pathname pass5
 Presentation Format 1patriotradii
 Dataset Creation Tue Jun 14 17:03:48 2022
 Charted by Depth in Feet scaled 1:240

253	TT (usec)	153	0	AMP (mV)	100	0	AMPAVG	100	200	VDL (usec)	1200	1	RADIAL MAP	8
0	GR	200	0	3FT X 5 (mV)	20	0	AMPMAX	100						
9	CCL	-1	0	LSPD (ft/min)-100	100	0	AMPMIN	100						

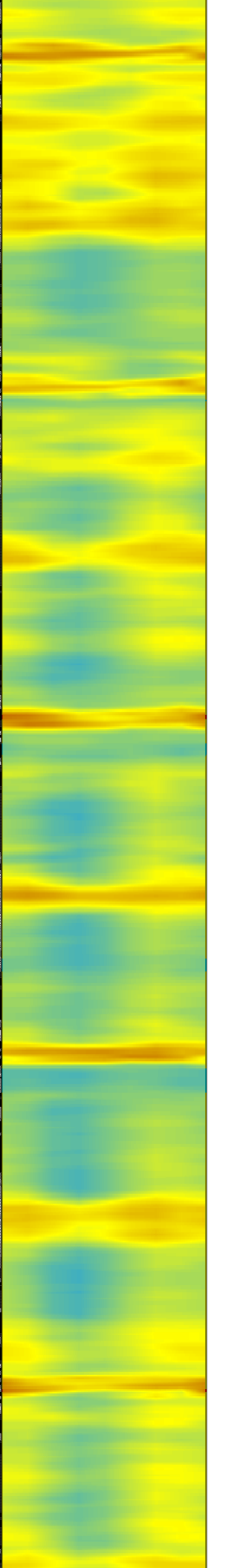
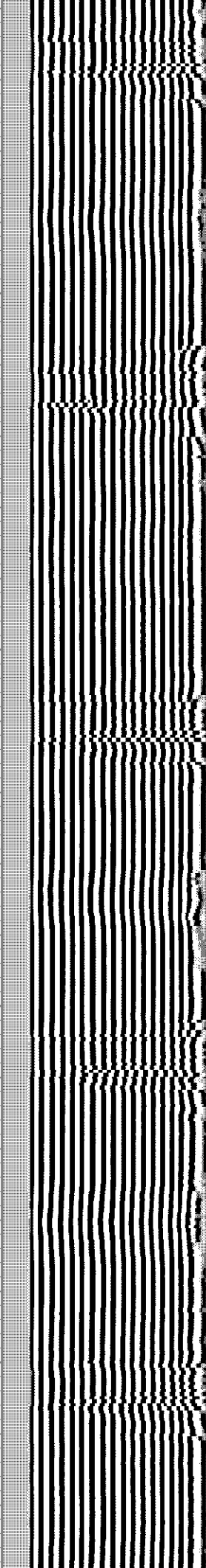
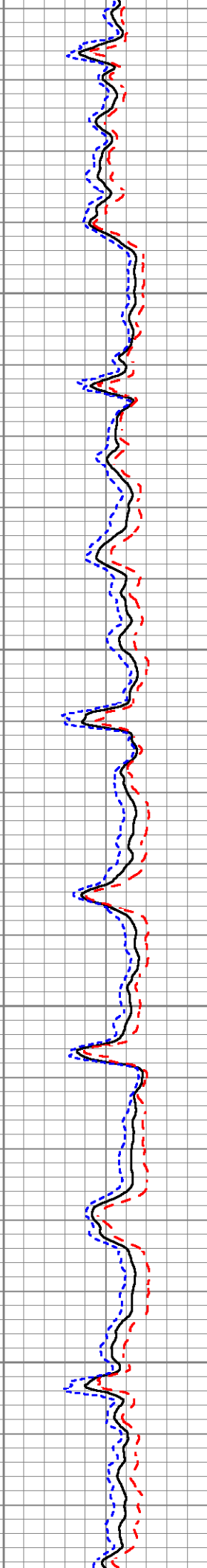
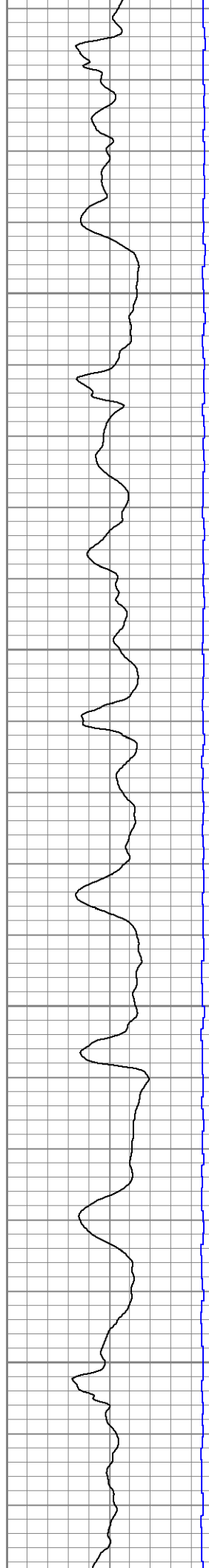


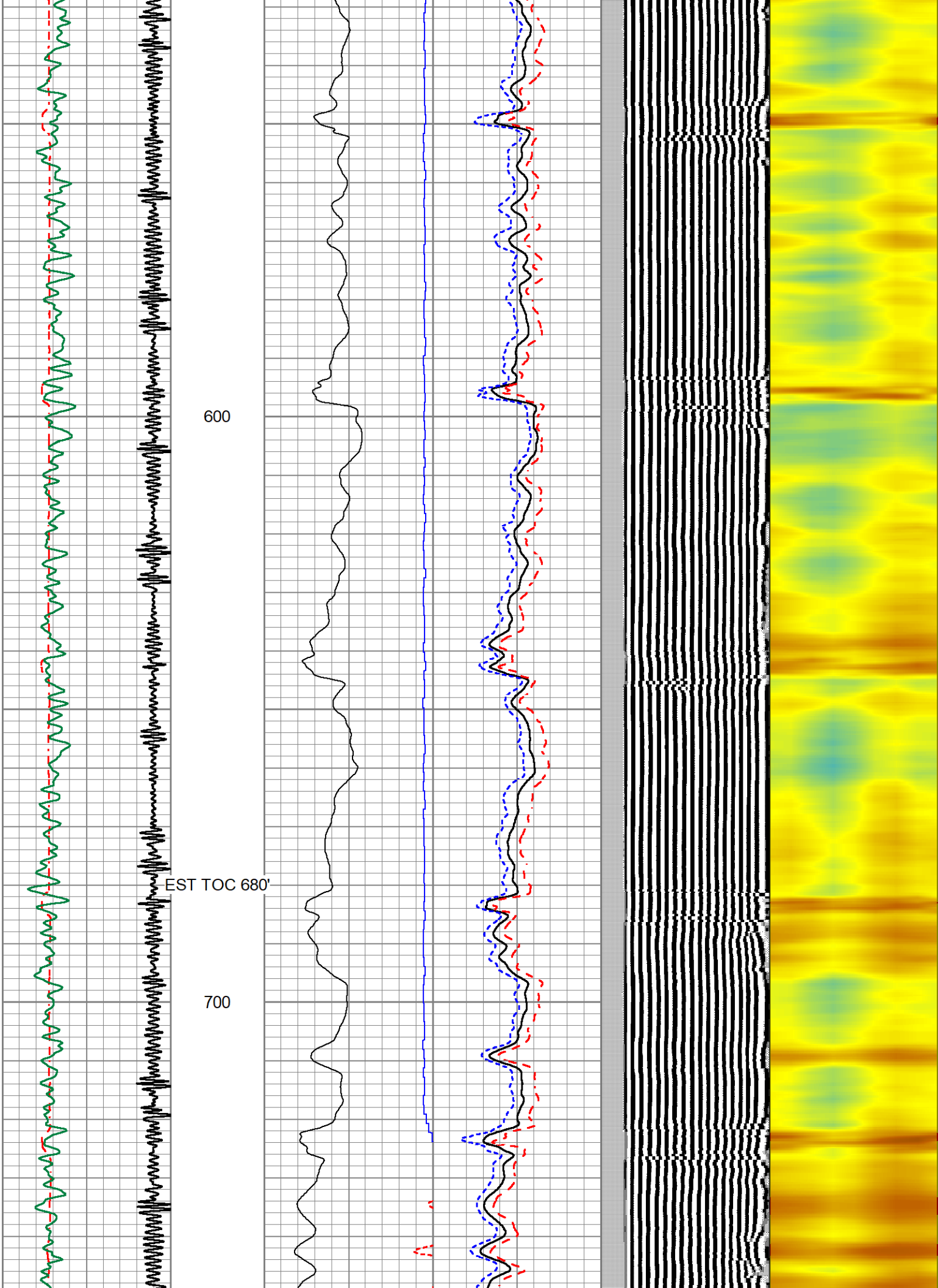


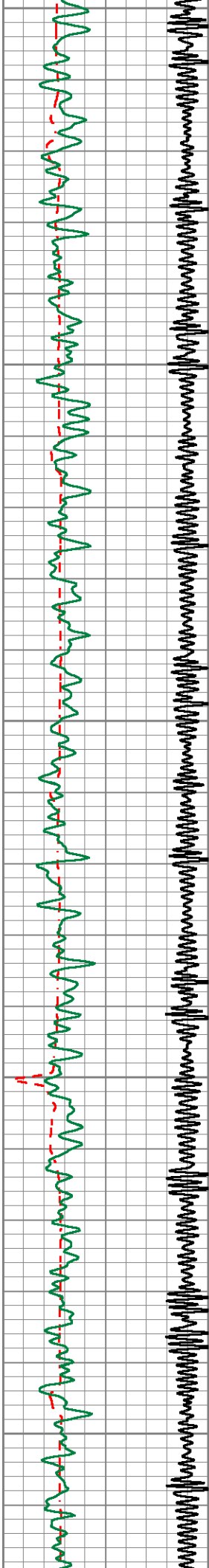


400

500

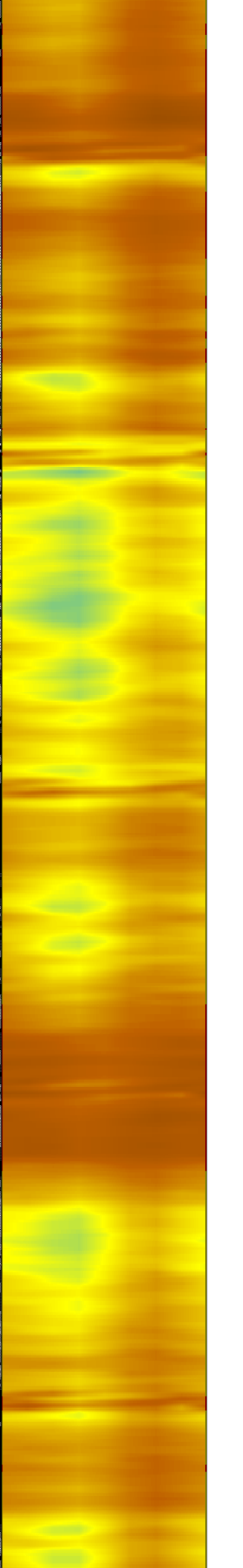
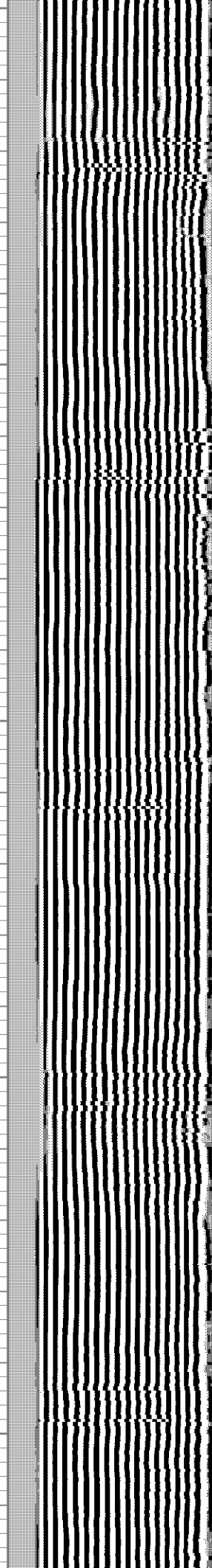
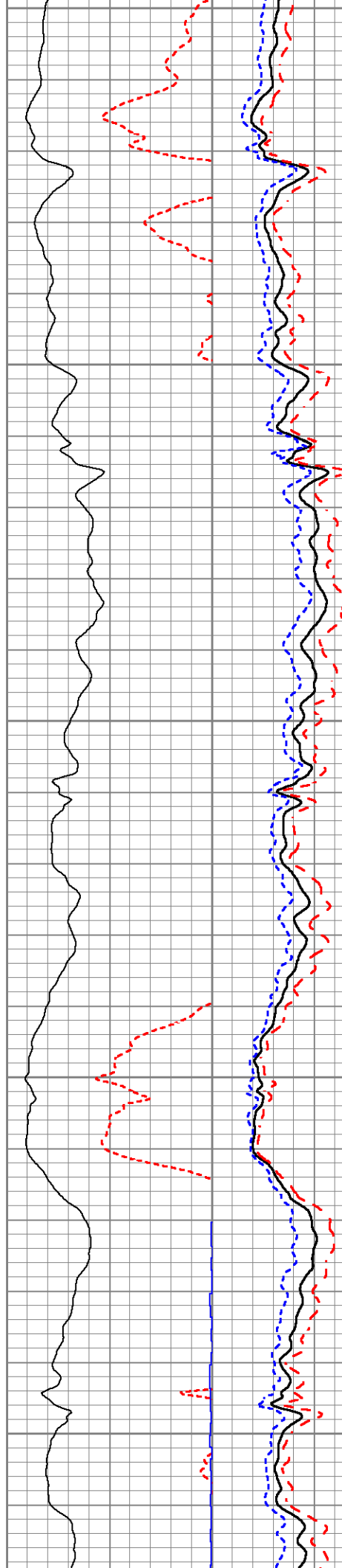


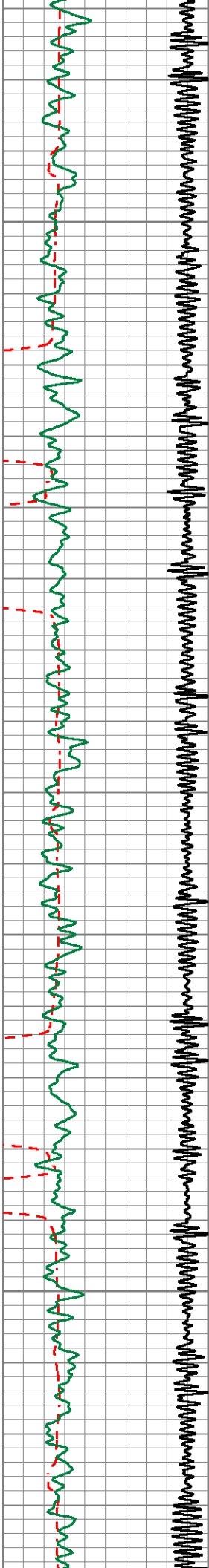




800

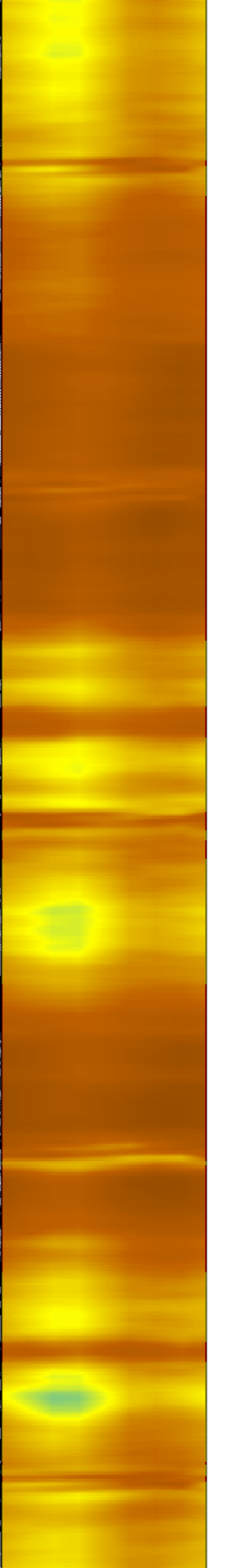
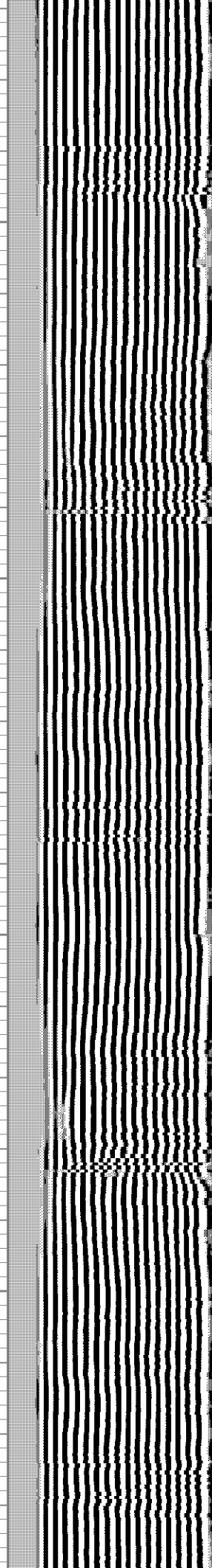
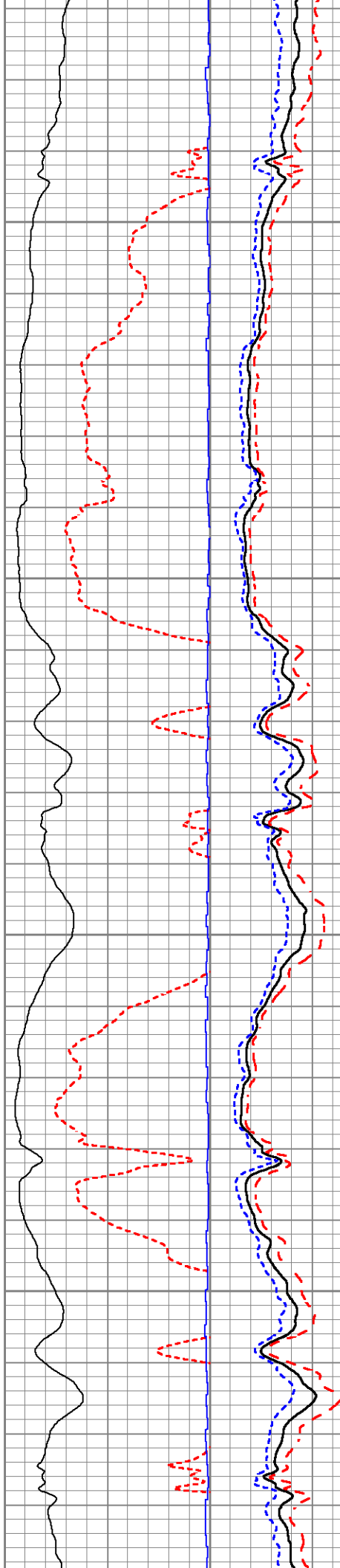
900

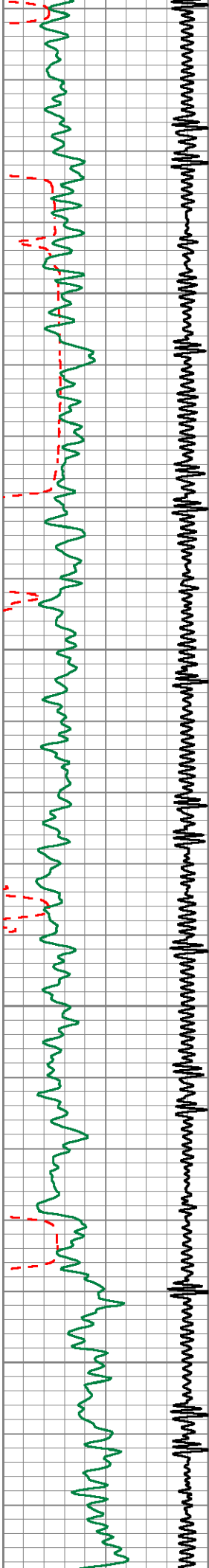




1000

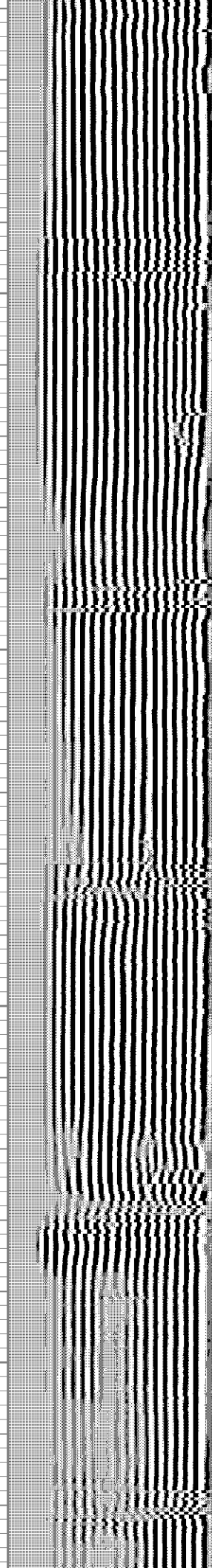
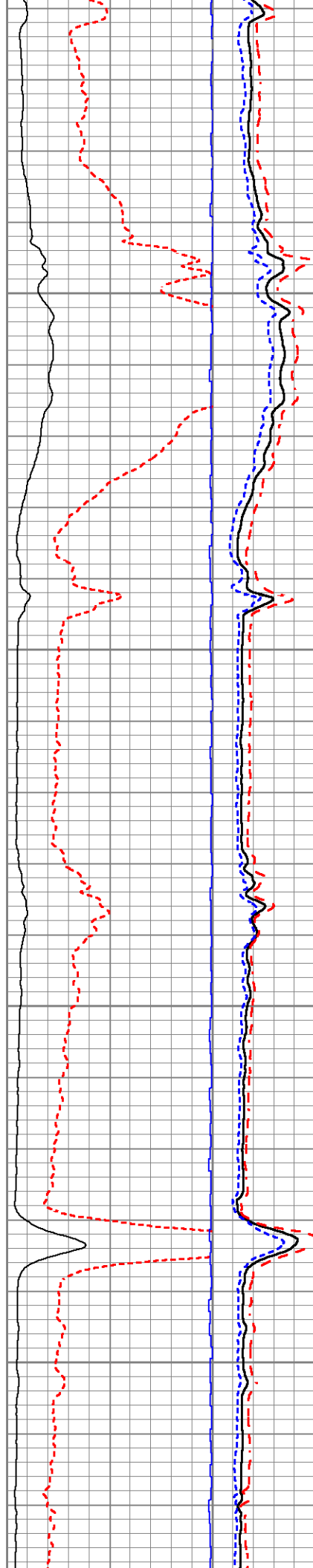
1100

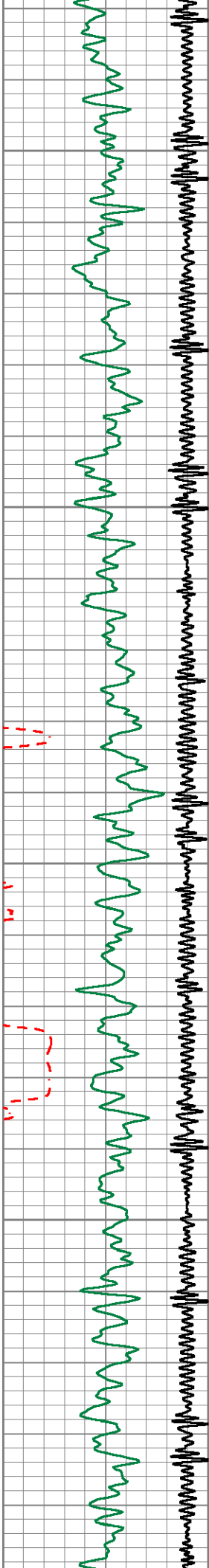




1500

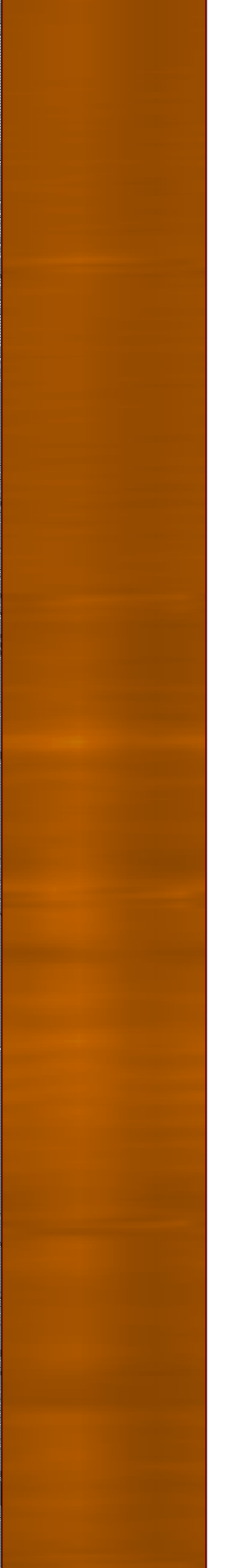
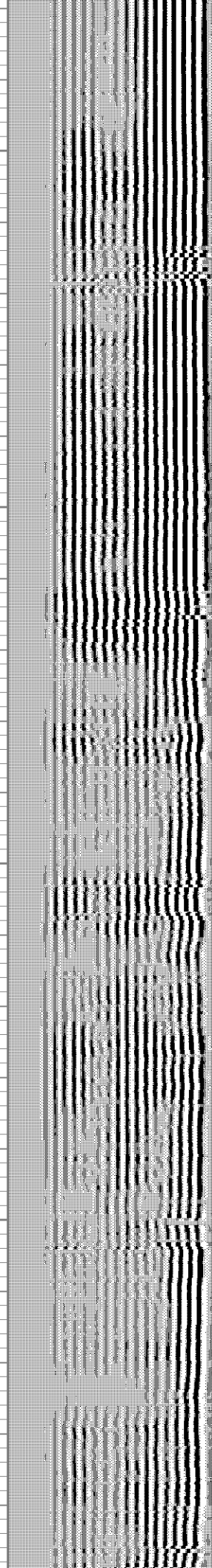
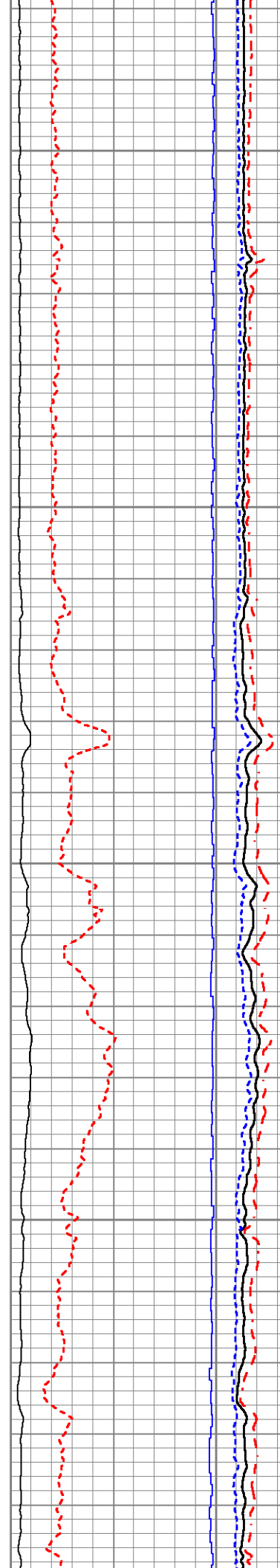
1600

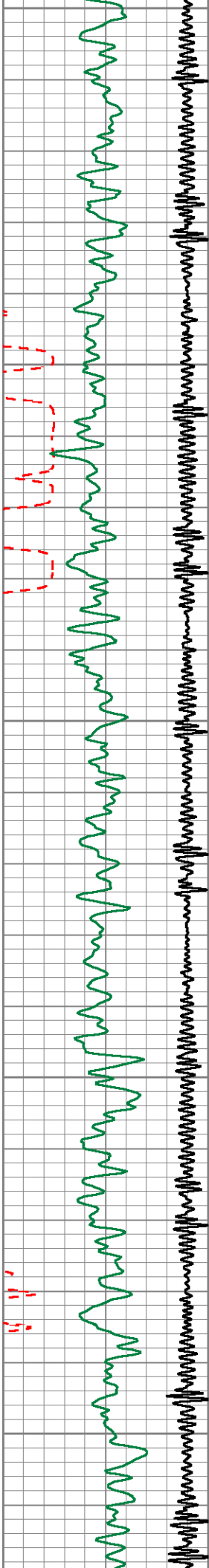




1700

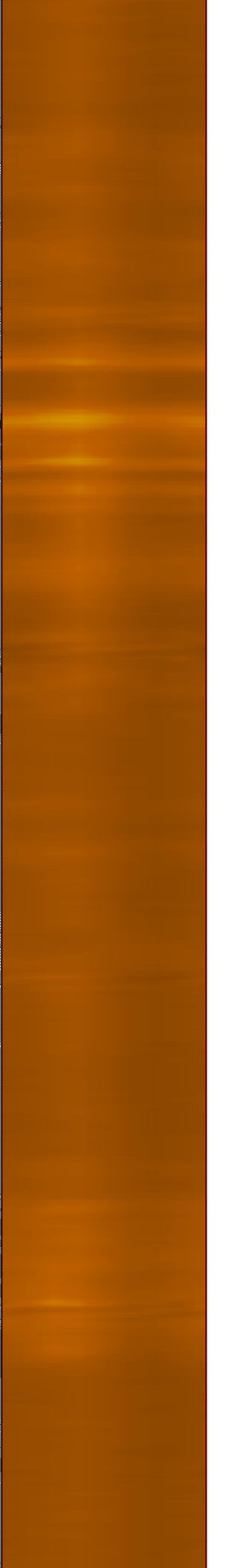
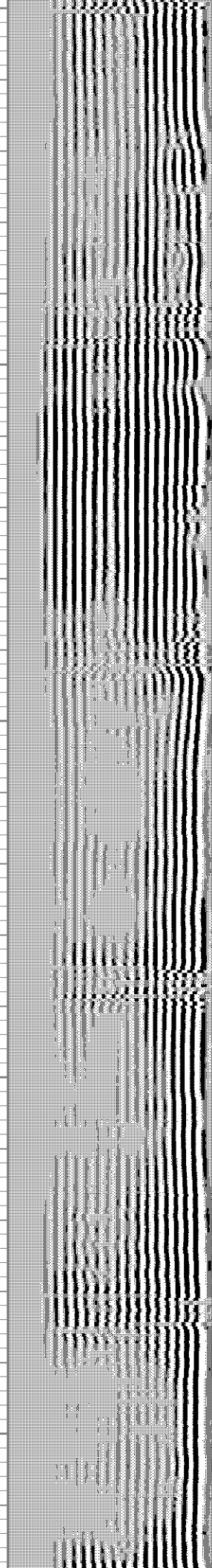
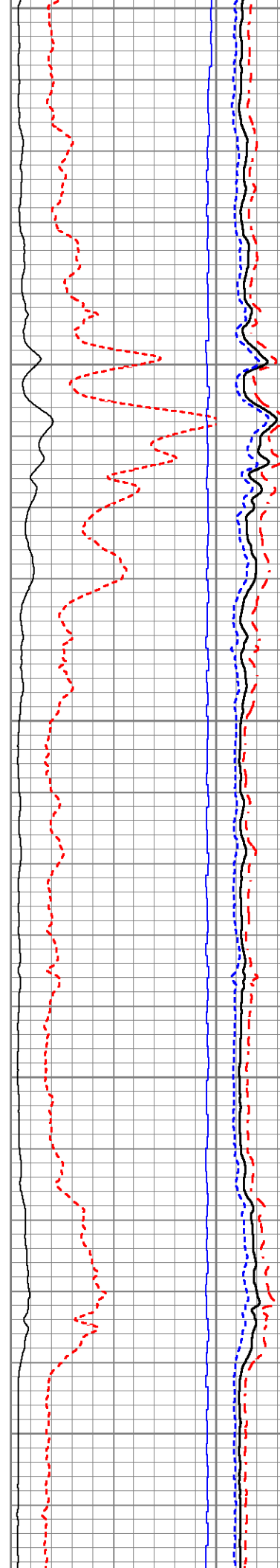
1800

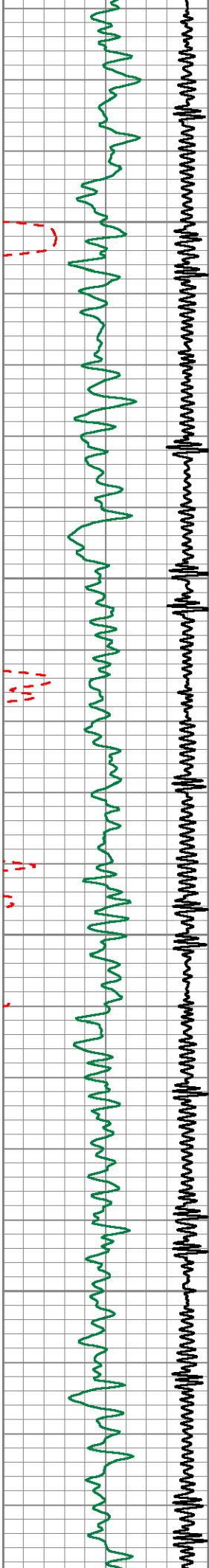




1900

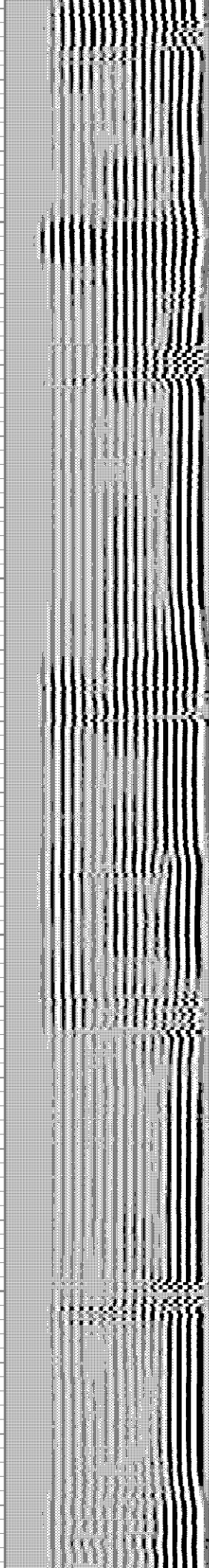
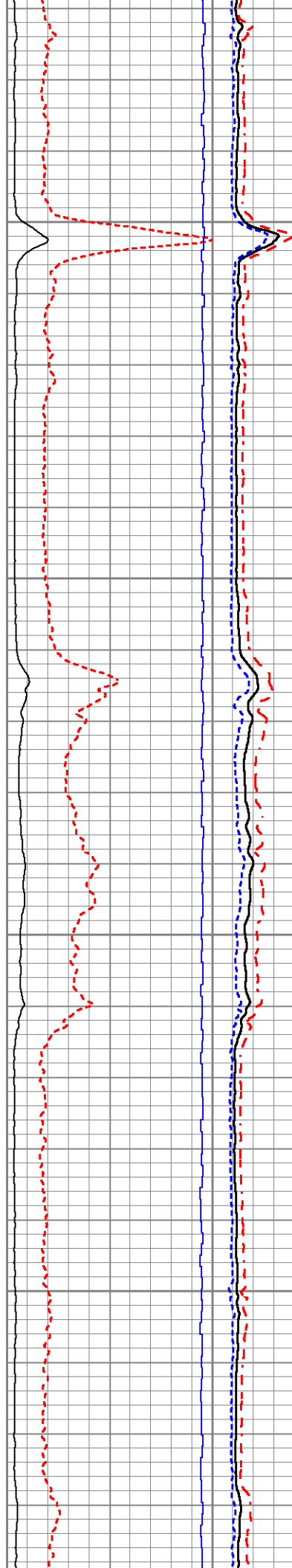
2000

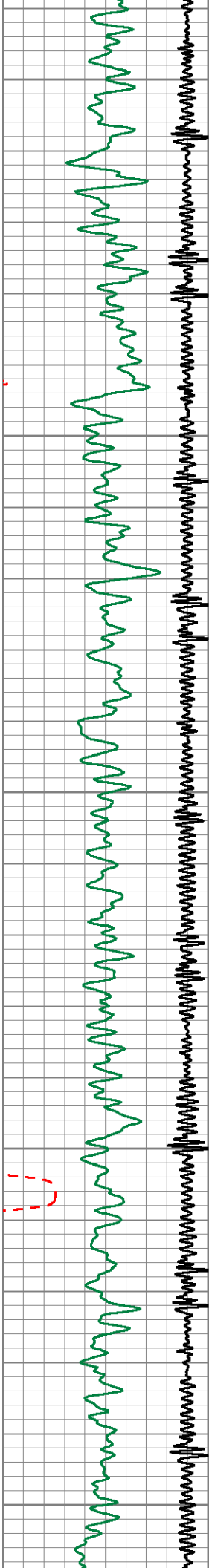




2100

2200

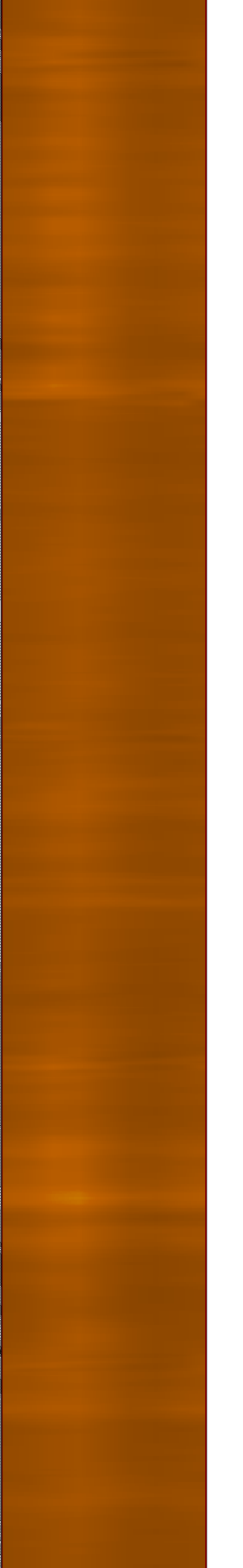
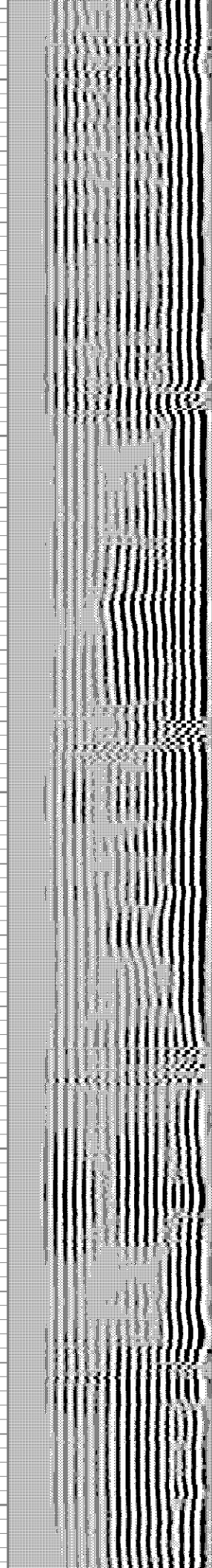
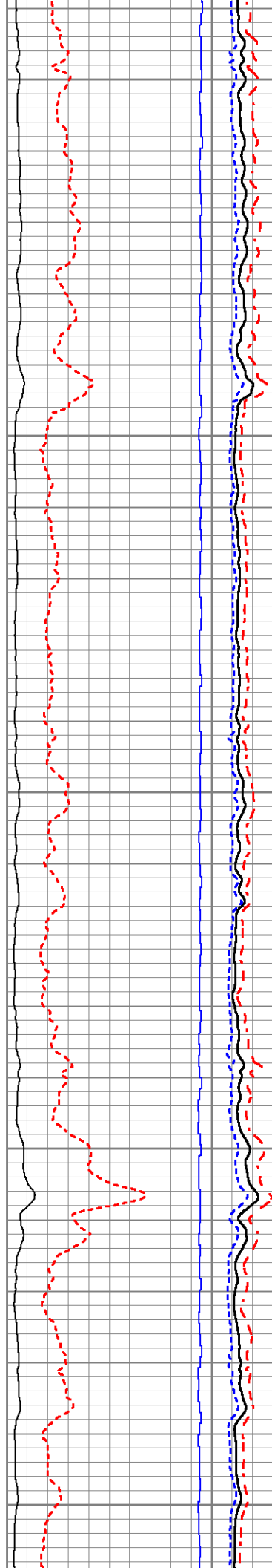


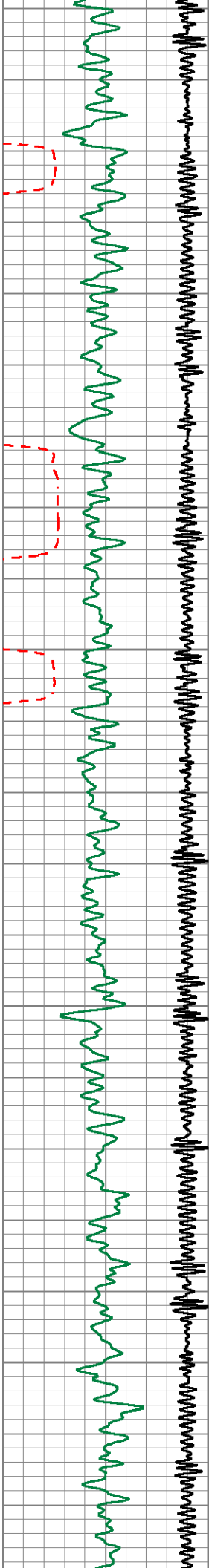


2300

2400

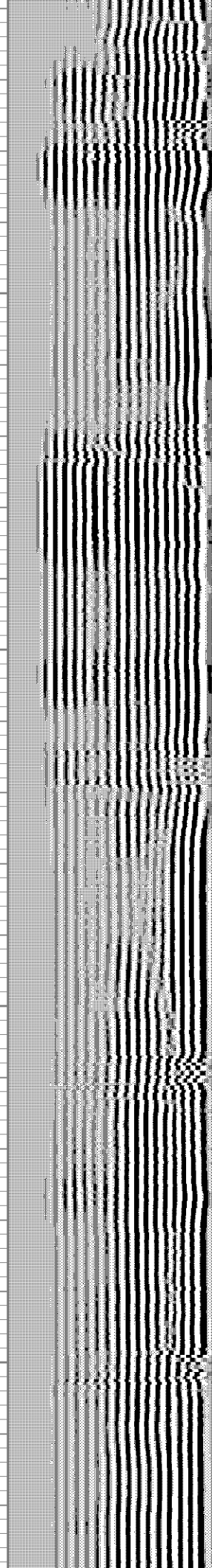
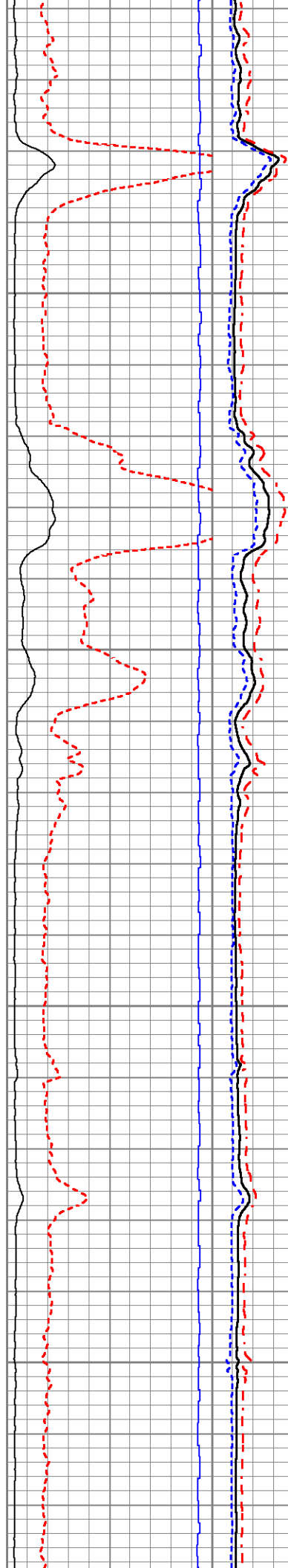
2500

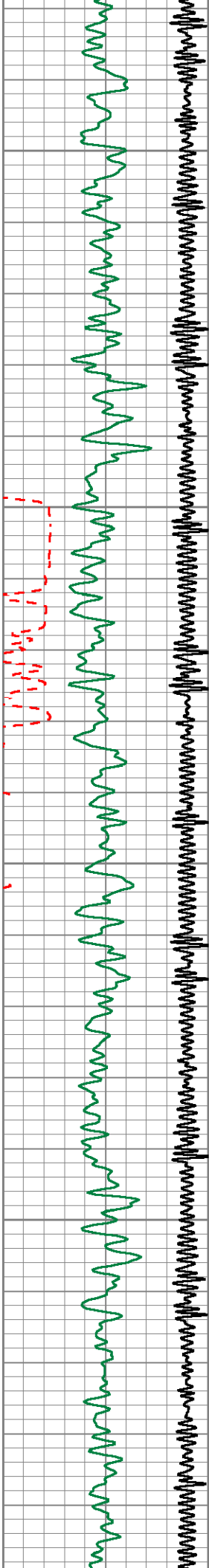




2600

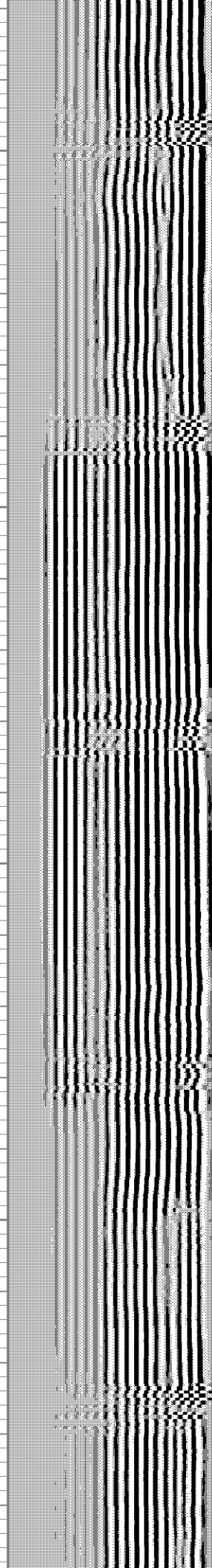
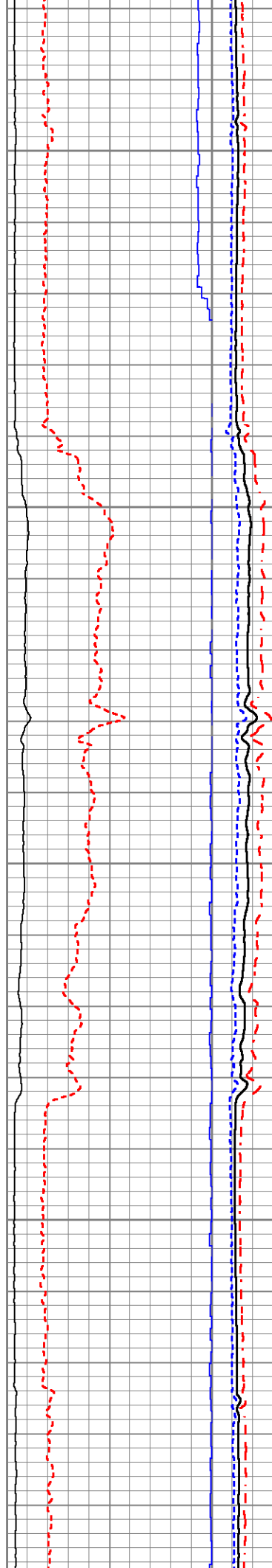
2700

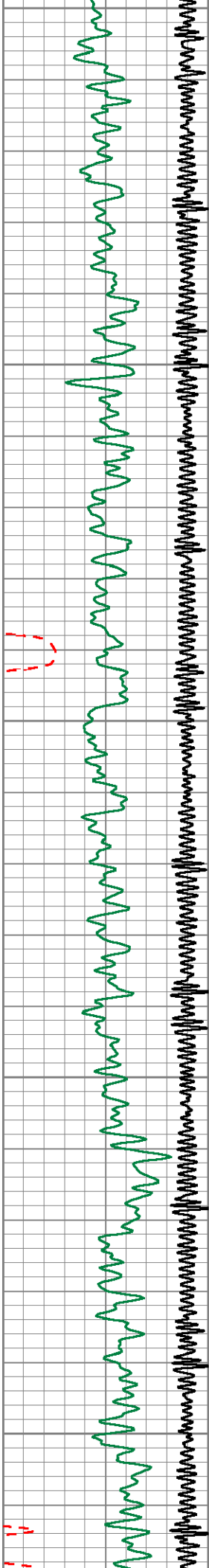




2800

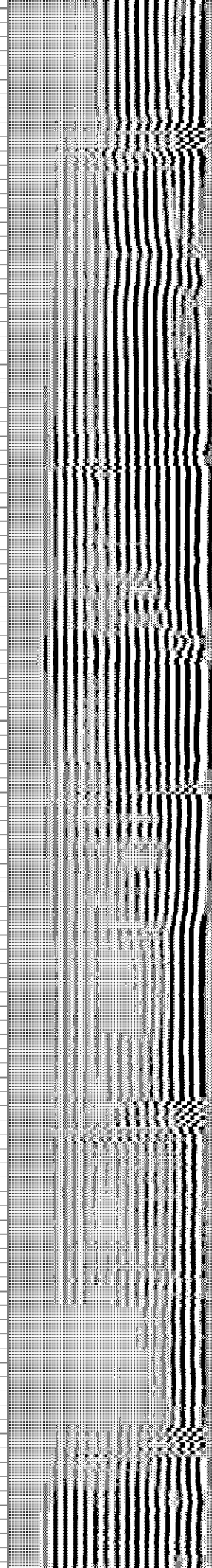
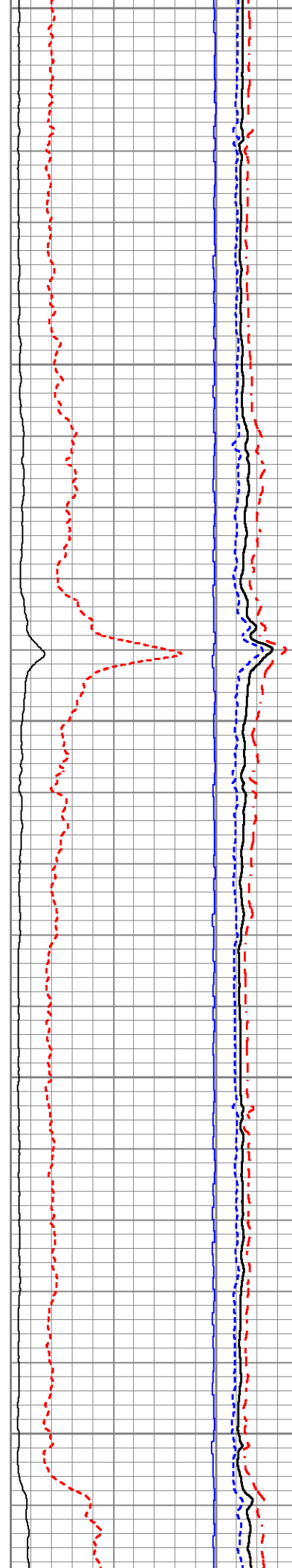
2900

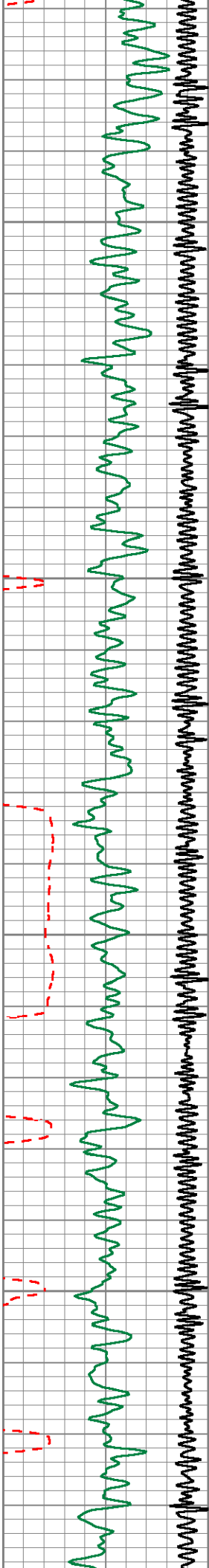




3000

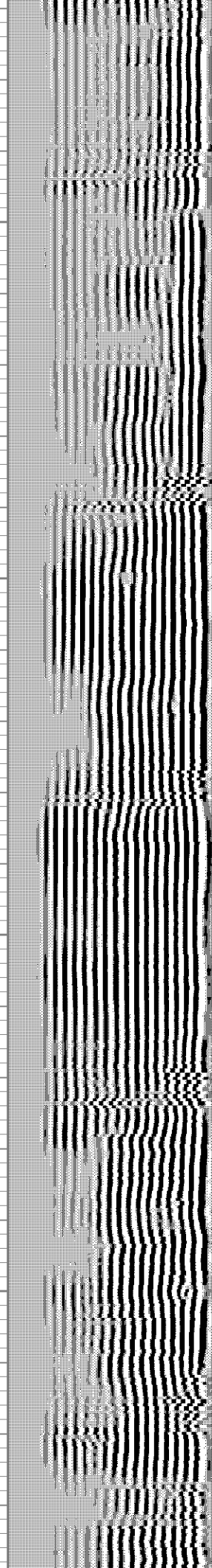
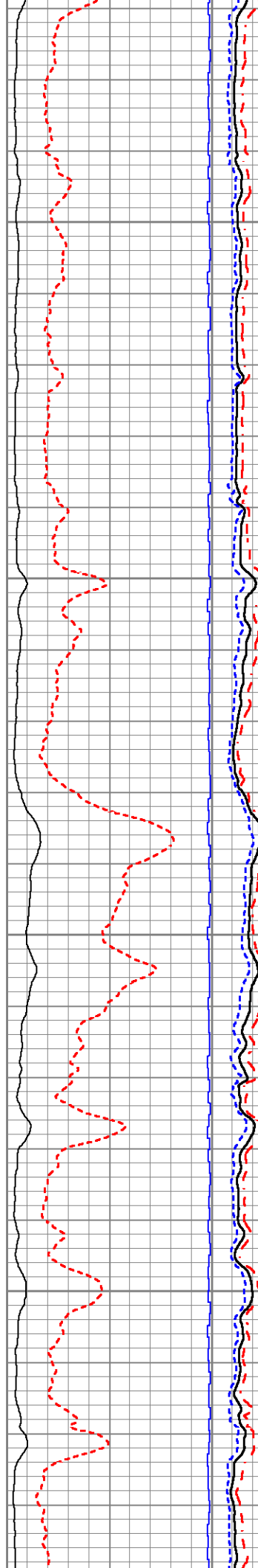
3100

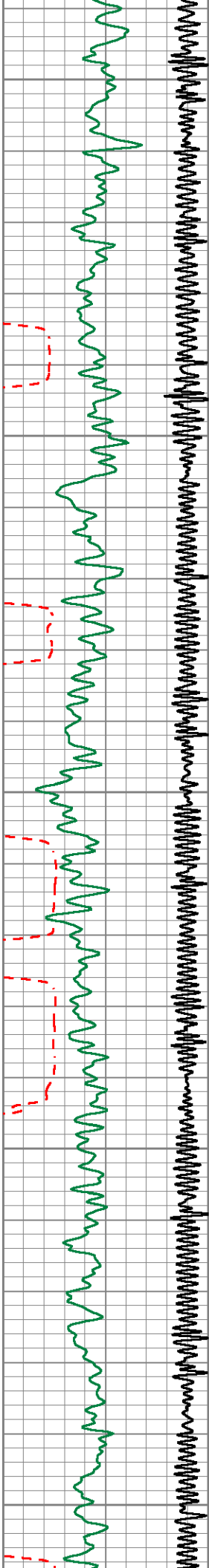




3200

3300

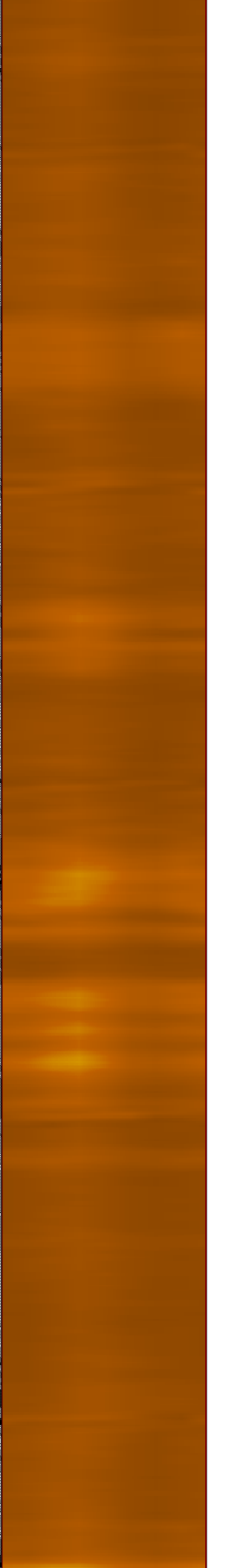
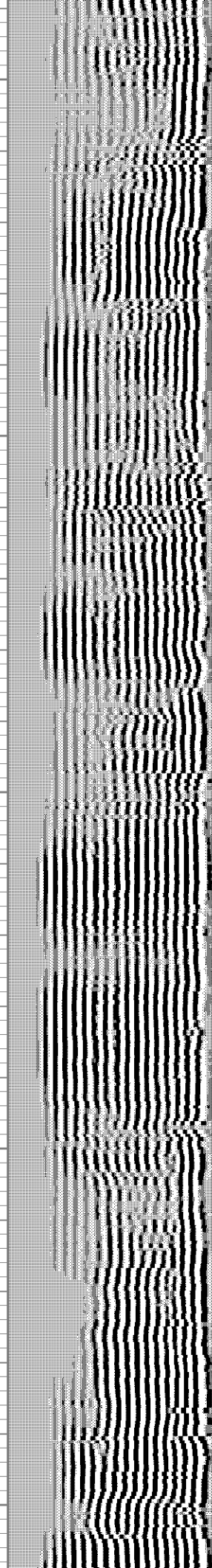
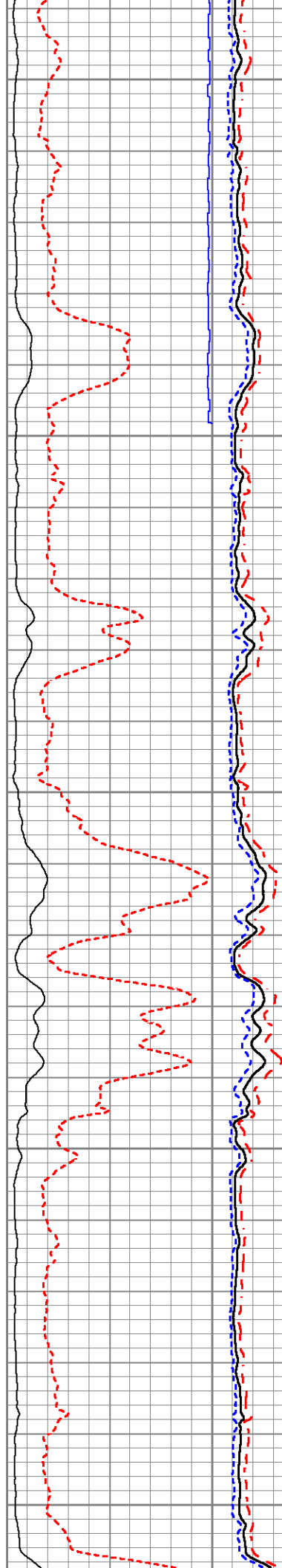


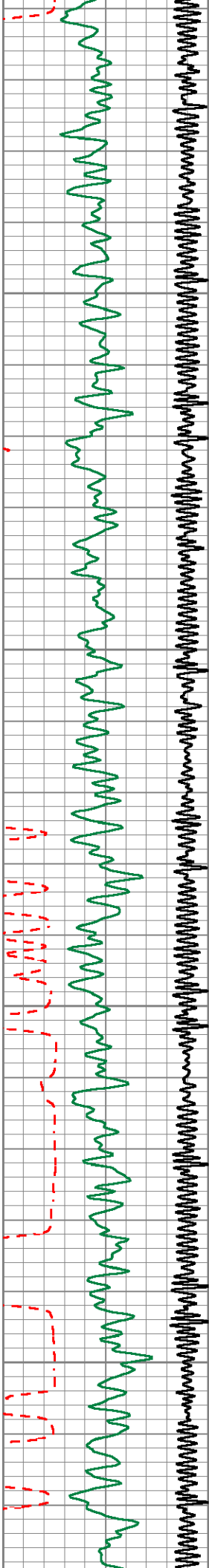


3400

3500

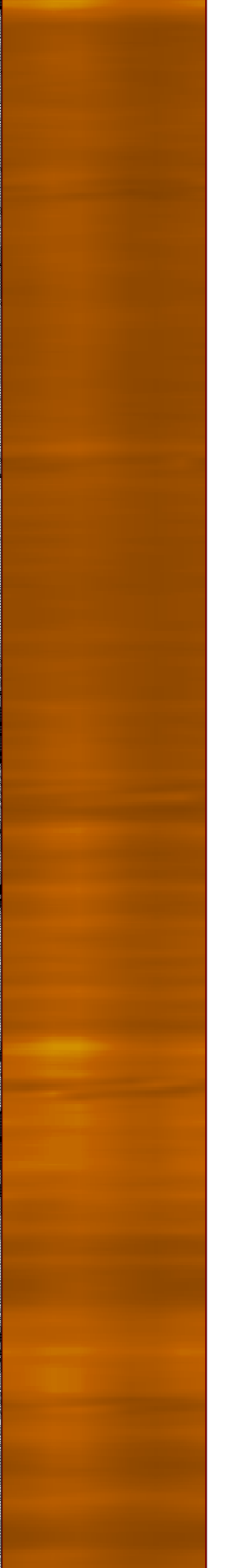
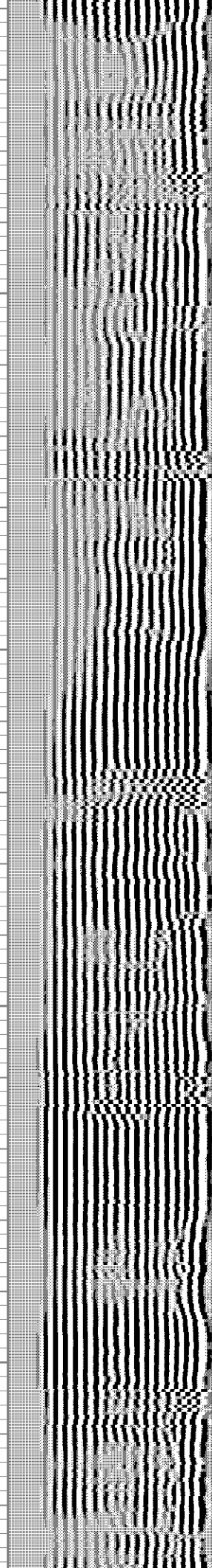
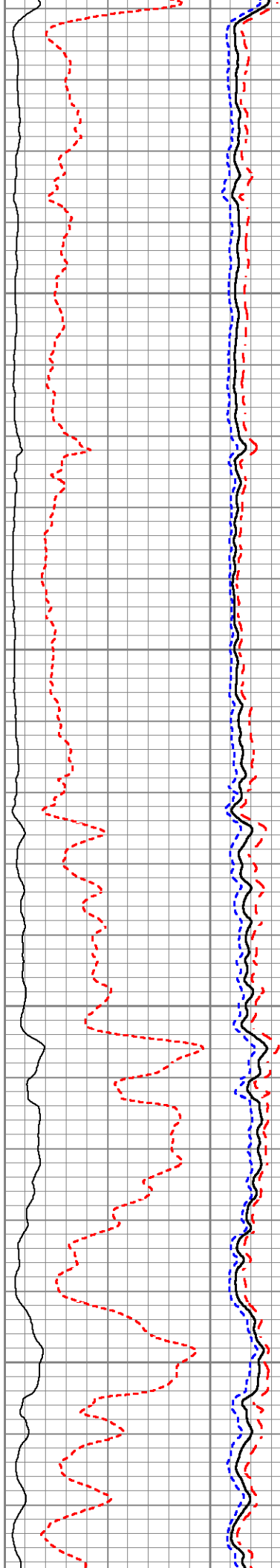
3600

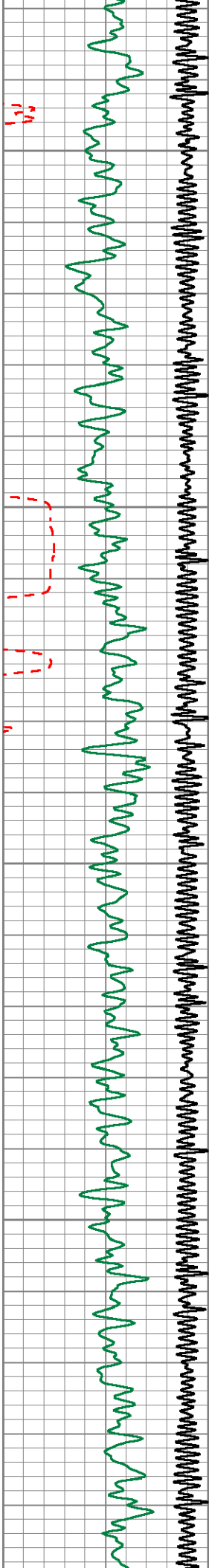




3700

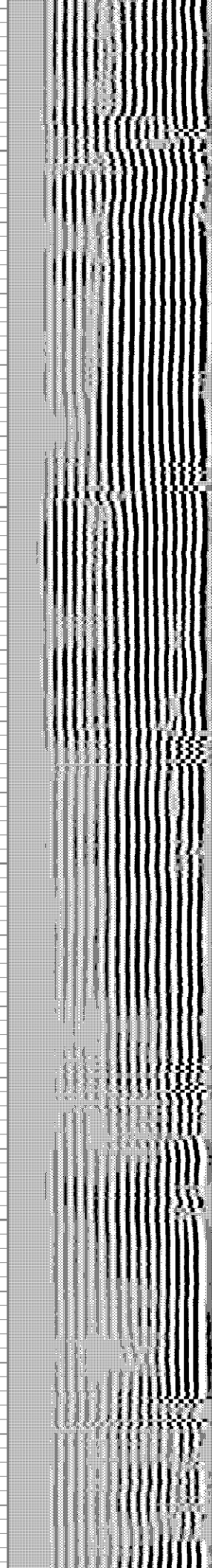
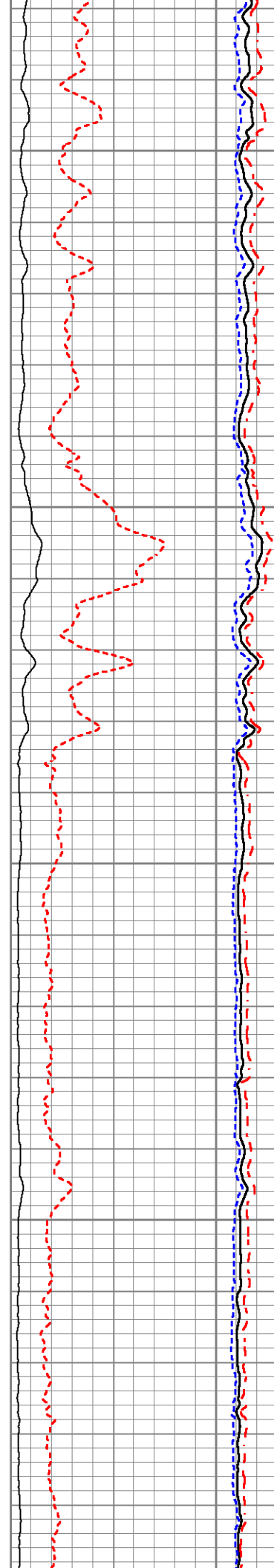
3800

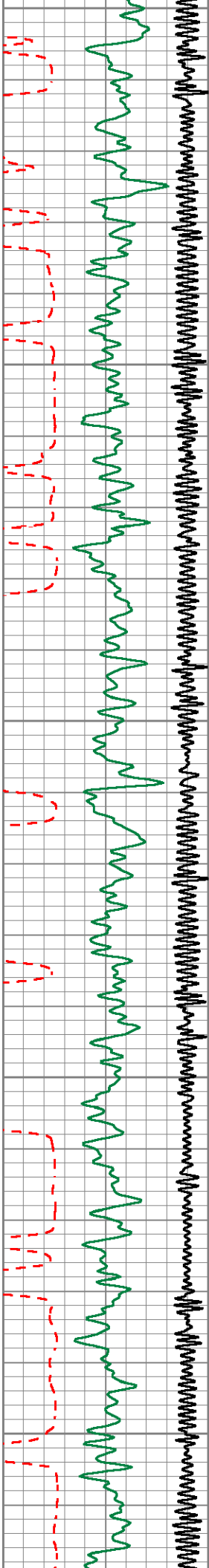




3900

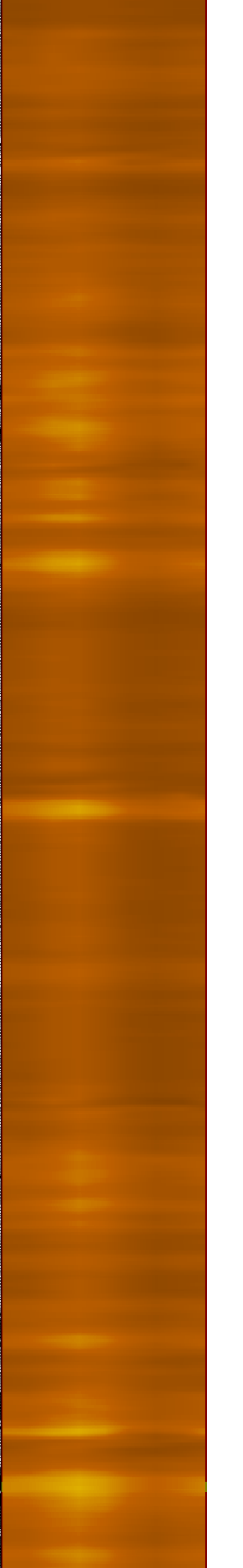
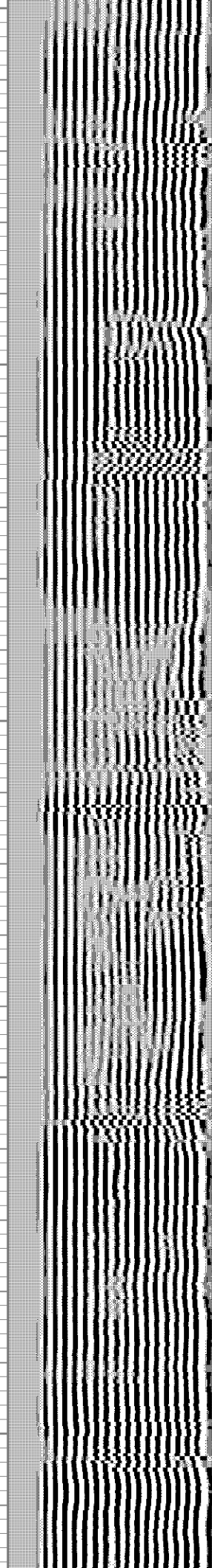
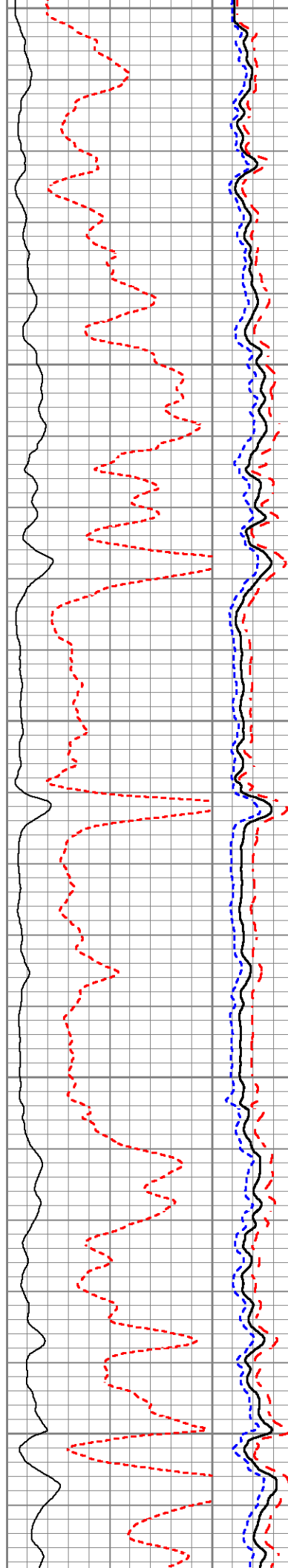
4000

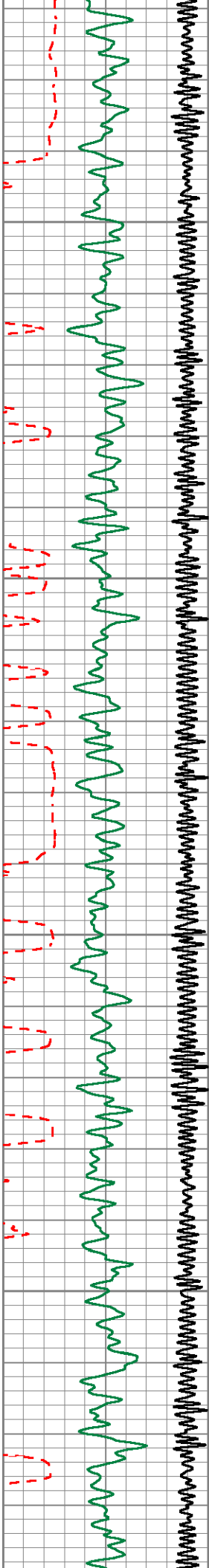




4100

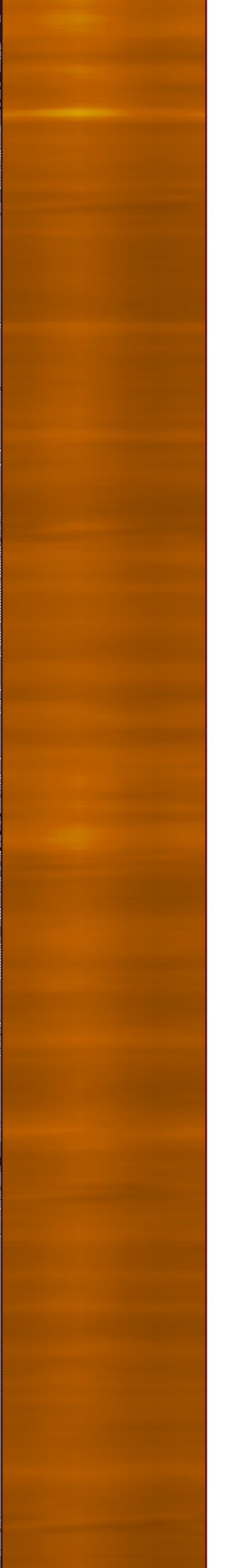
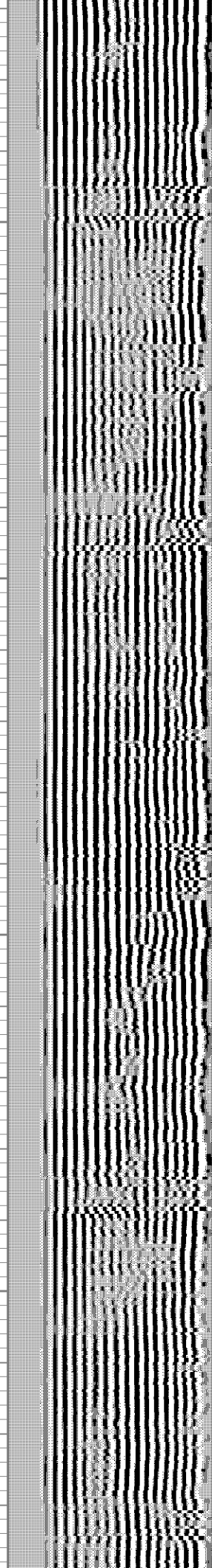
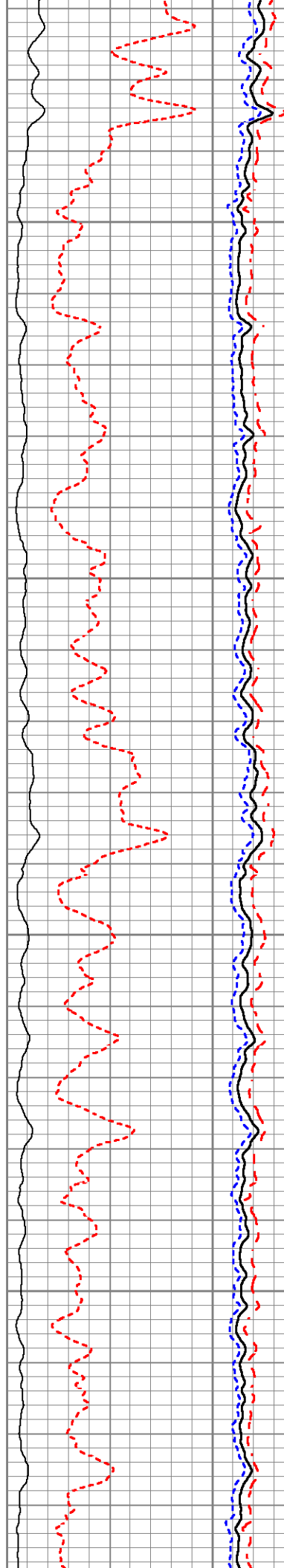
4200

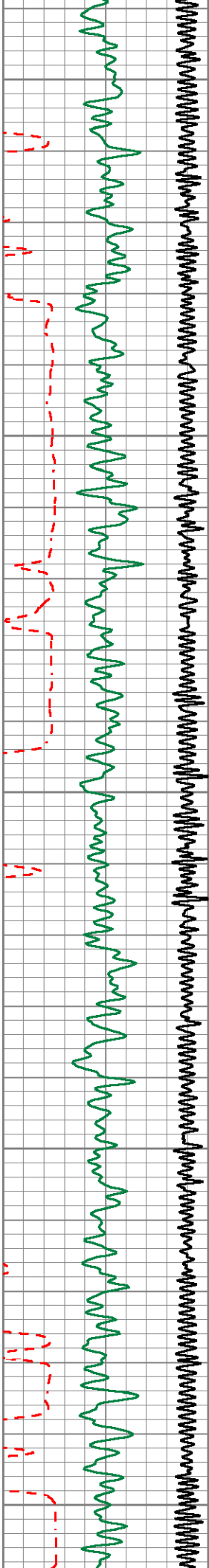




4300

4400

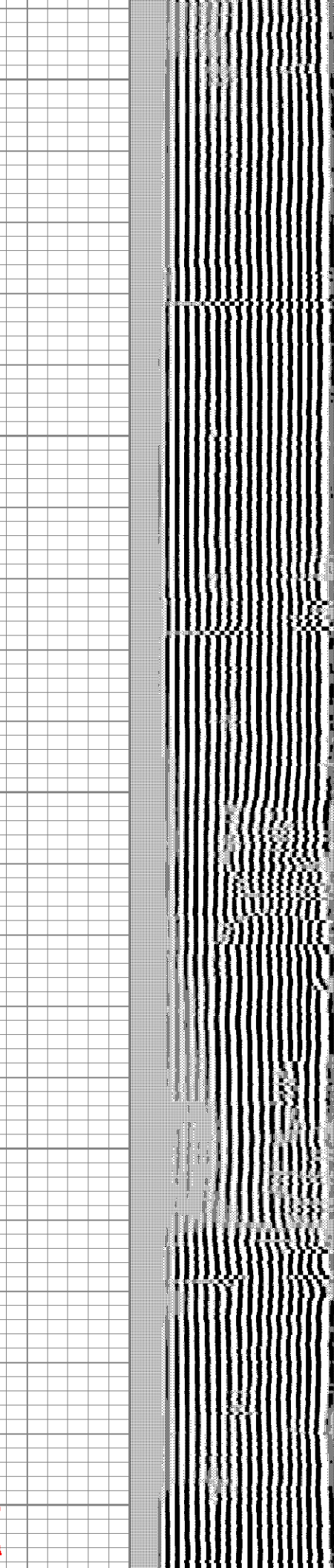
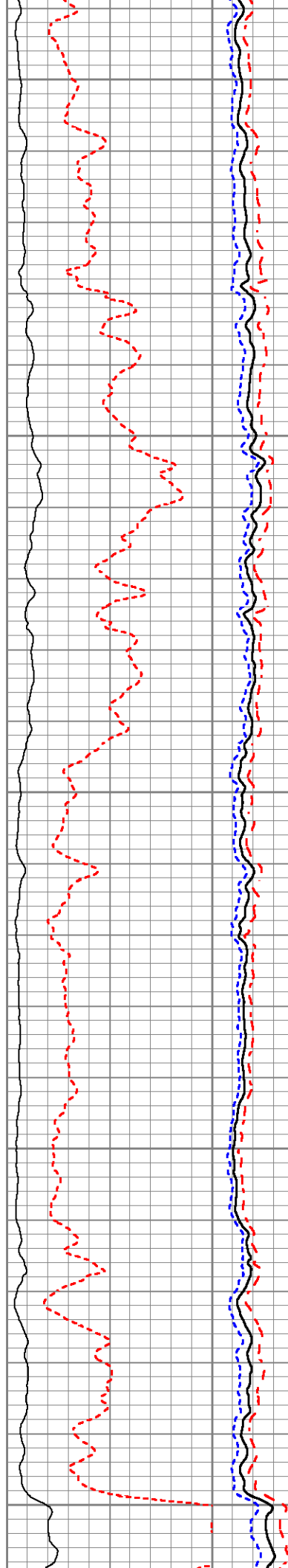


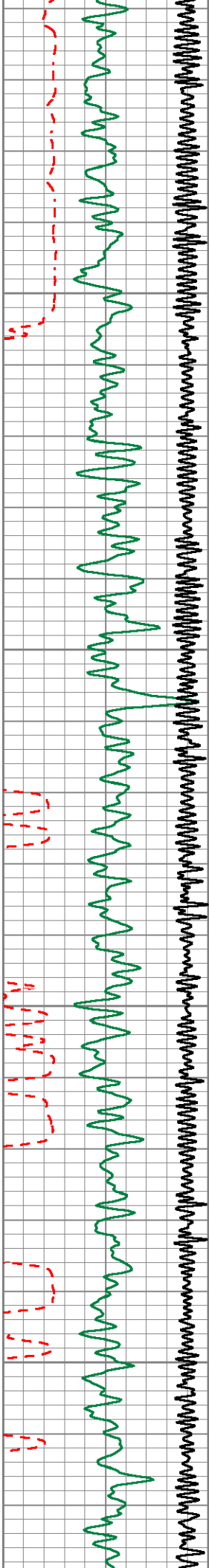


4500

4600

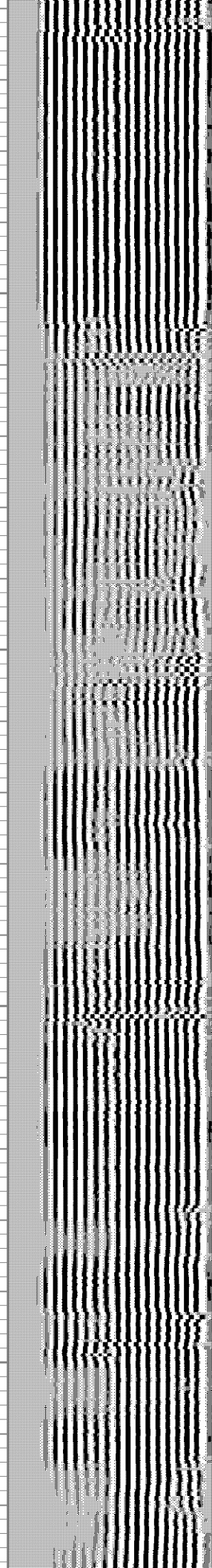
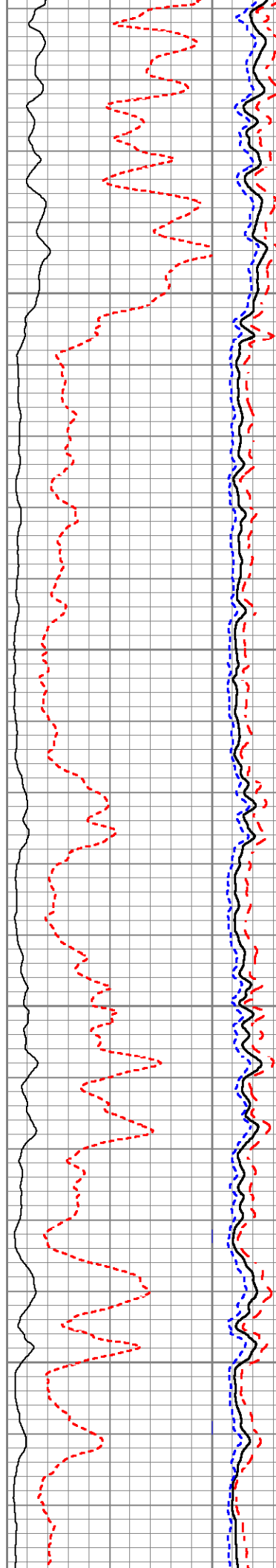
4700

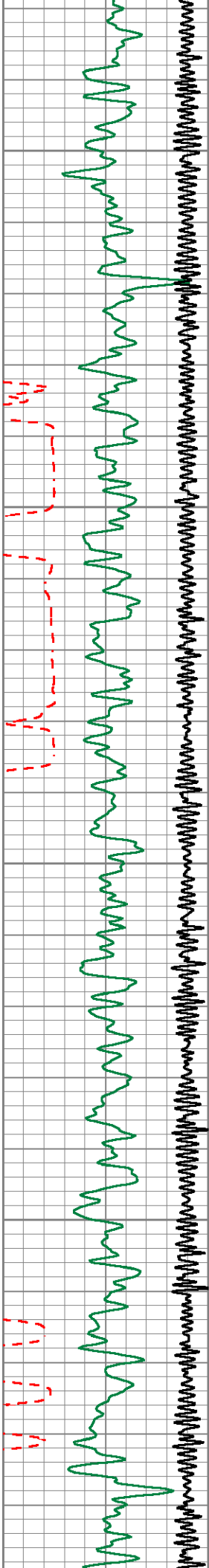




4800

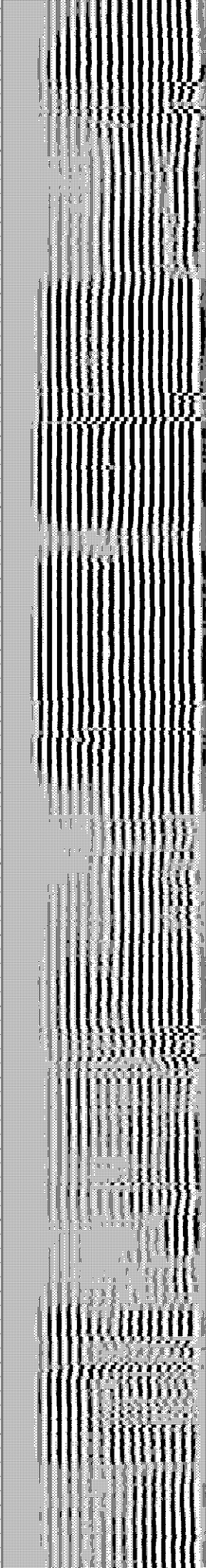
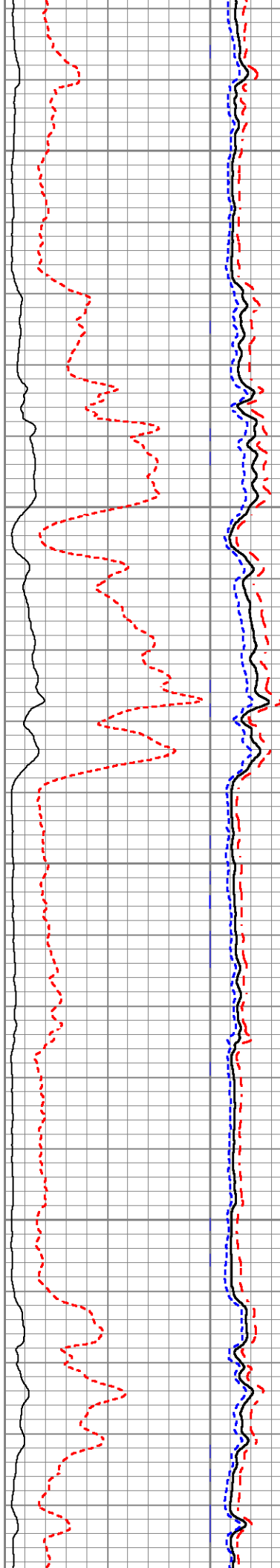
4900

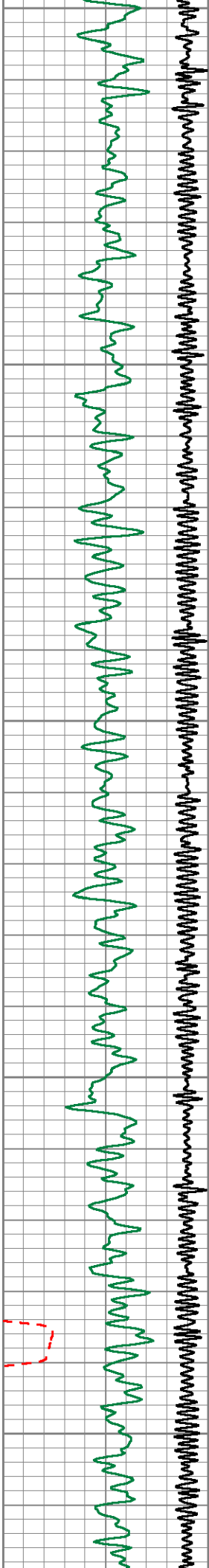




5000

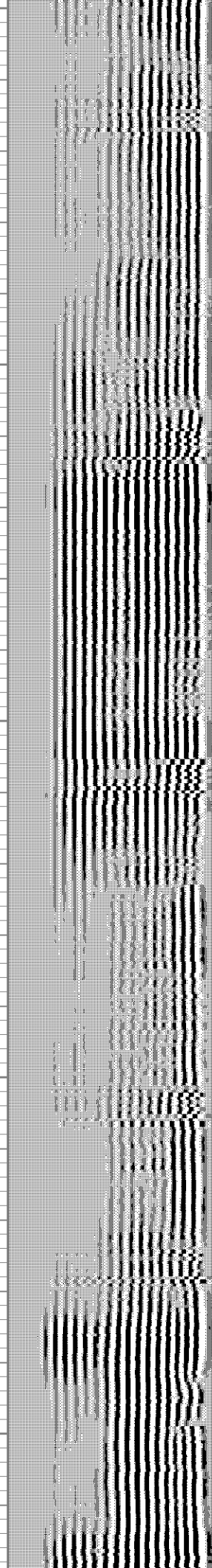
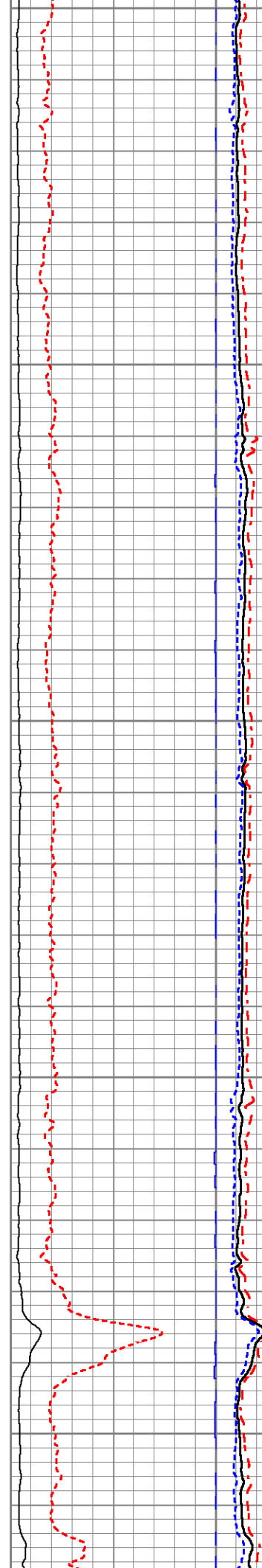
5100

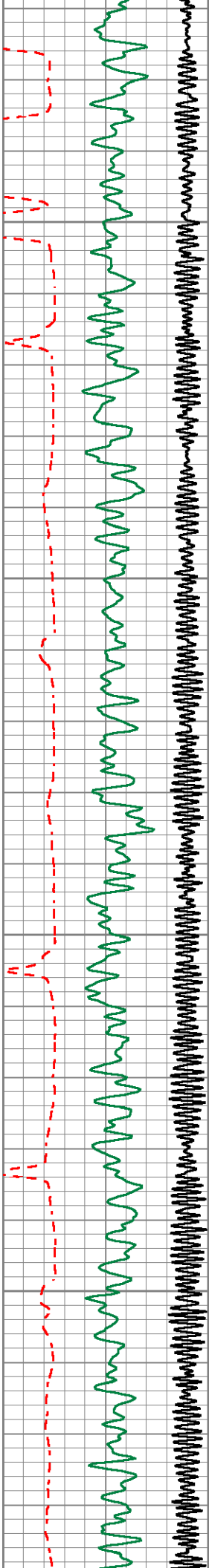




5200

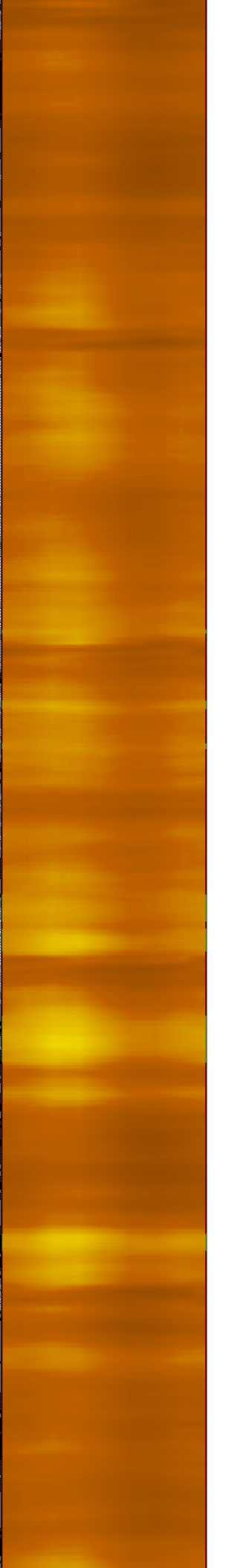
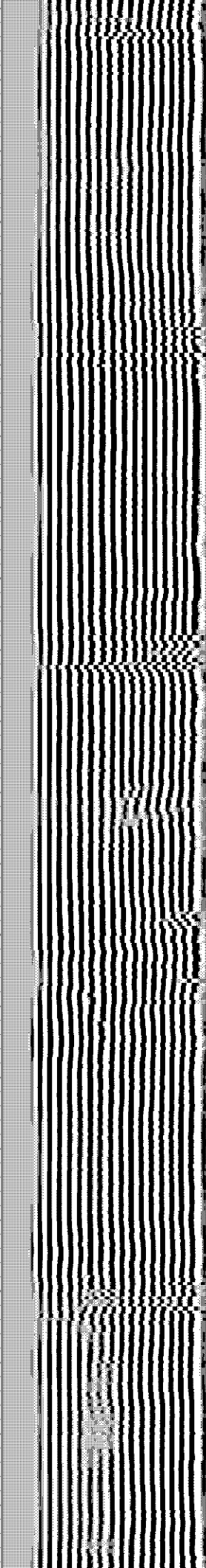
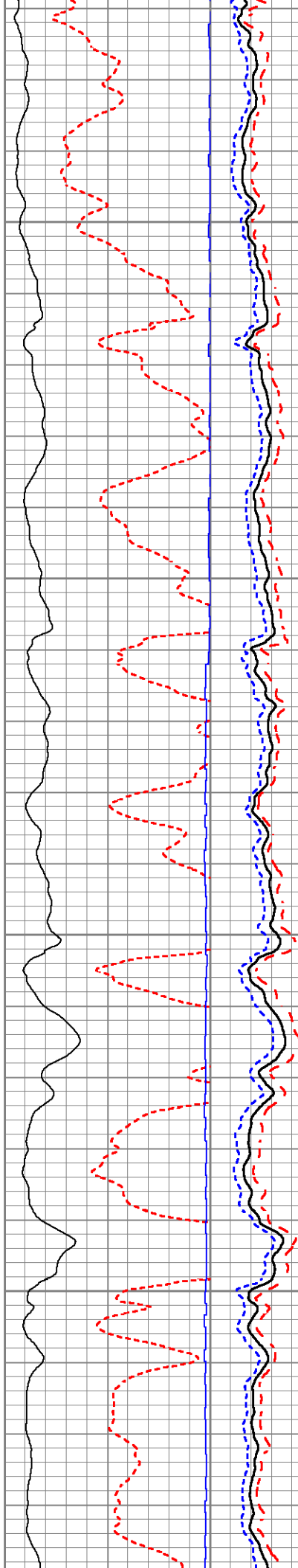
5300

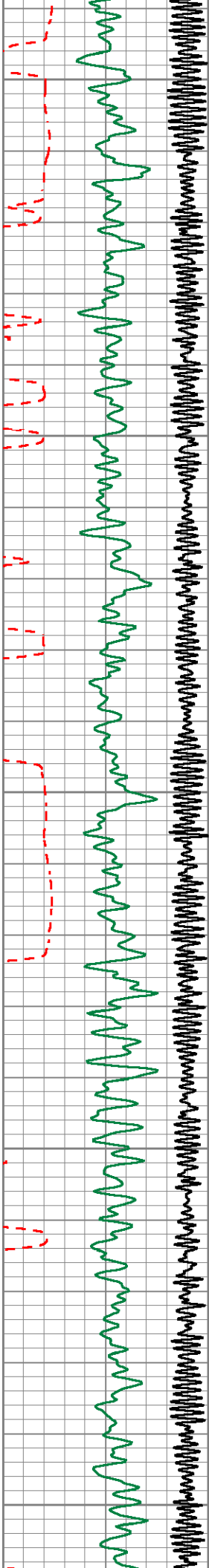




5400

5500

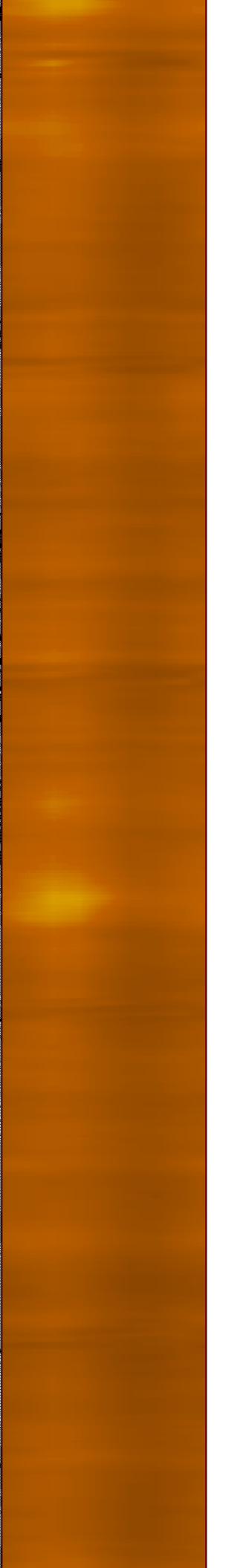
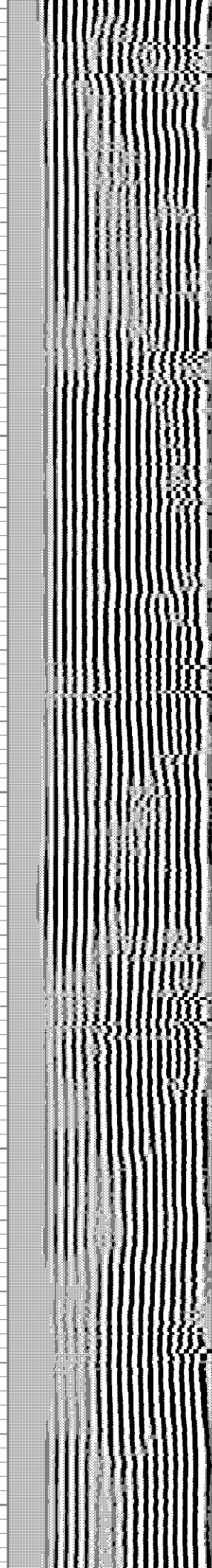
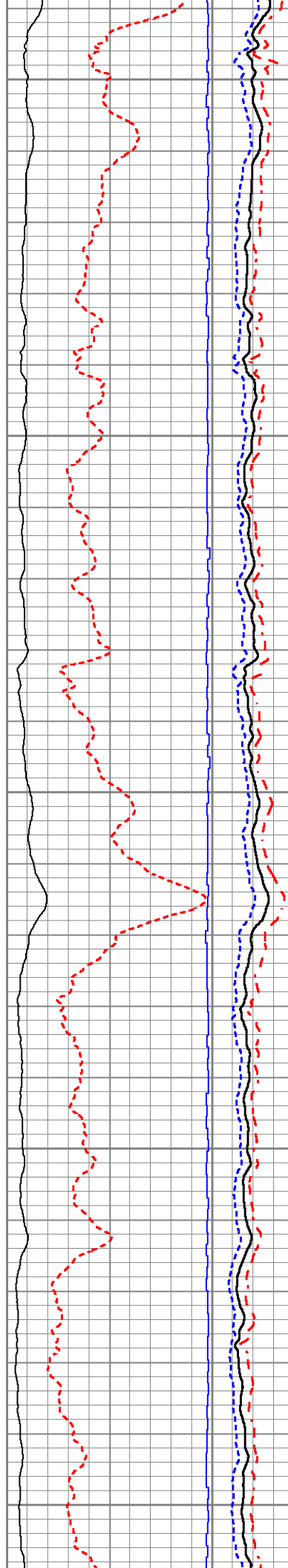


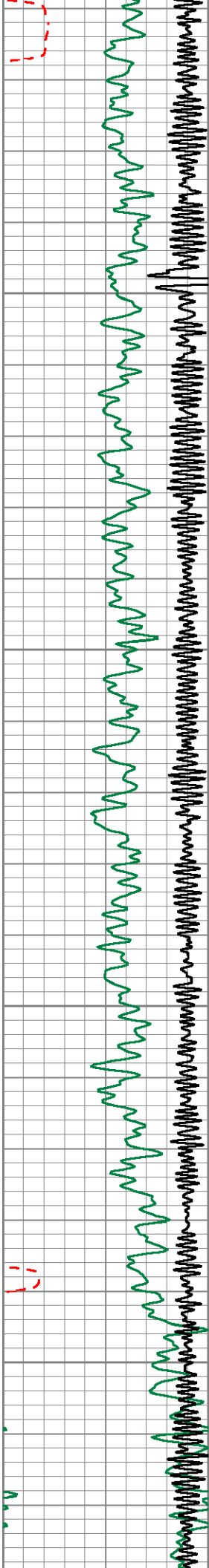


5600

5700

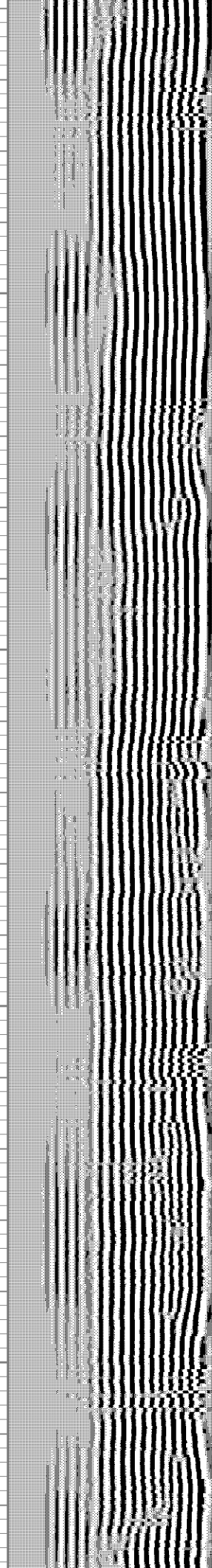
5800

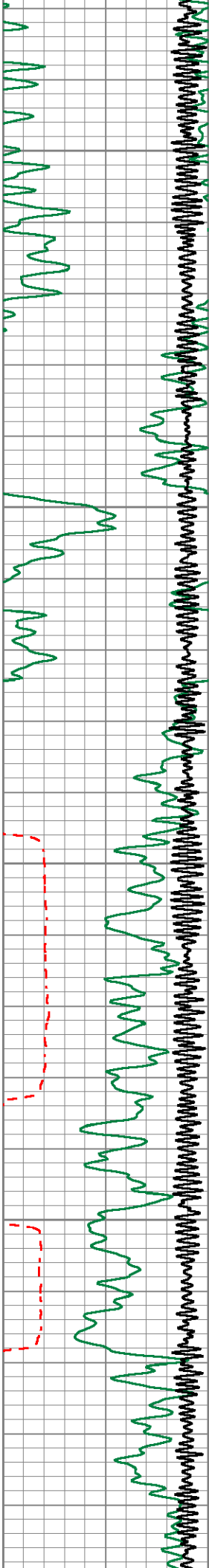




5900

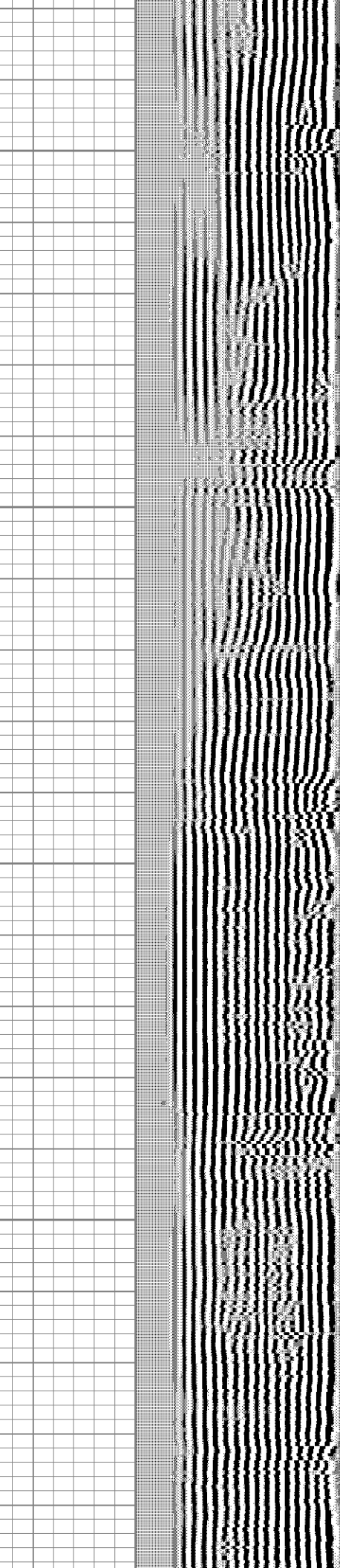
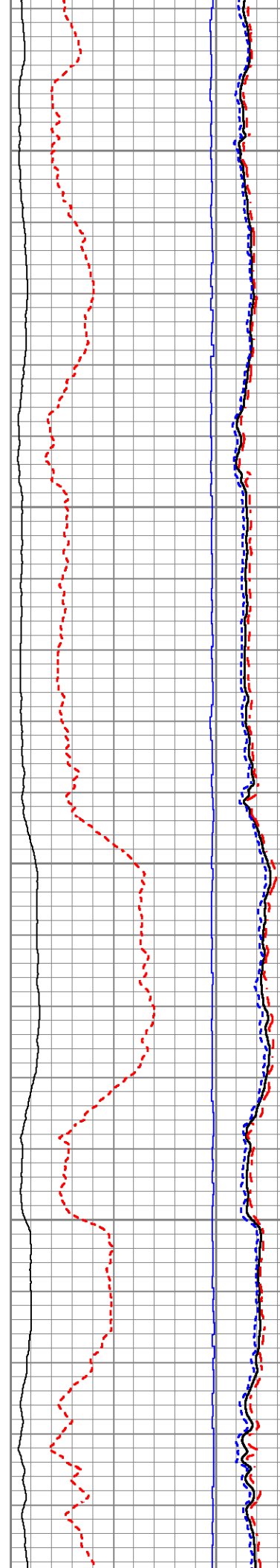
6000

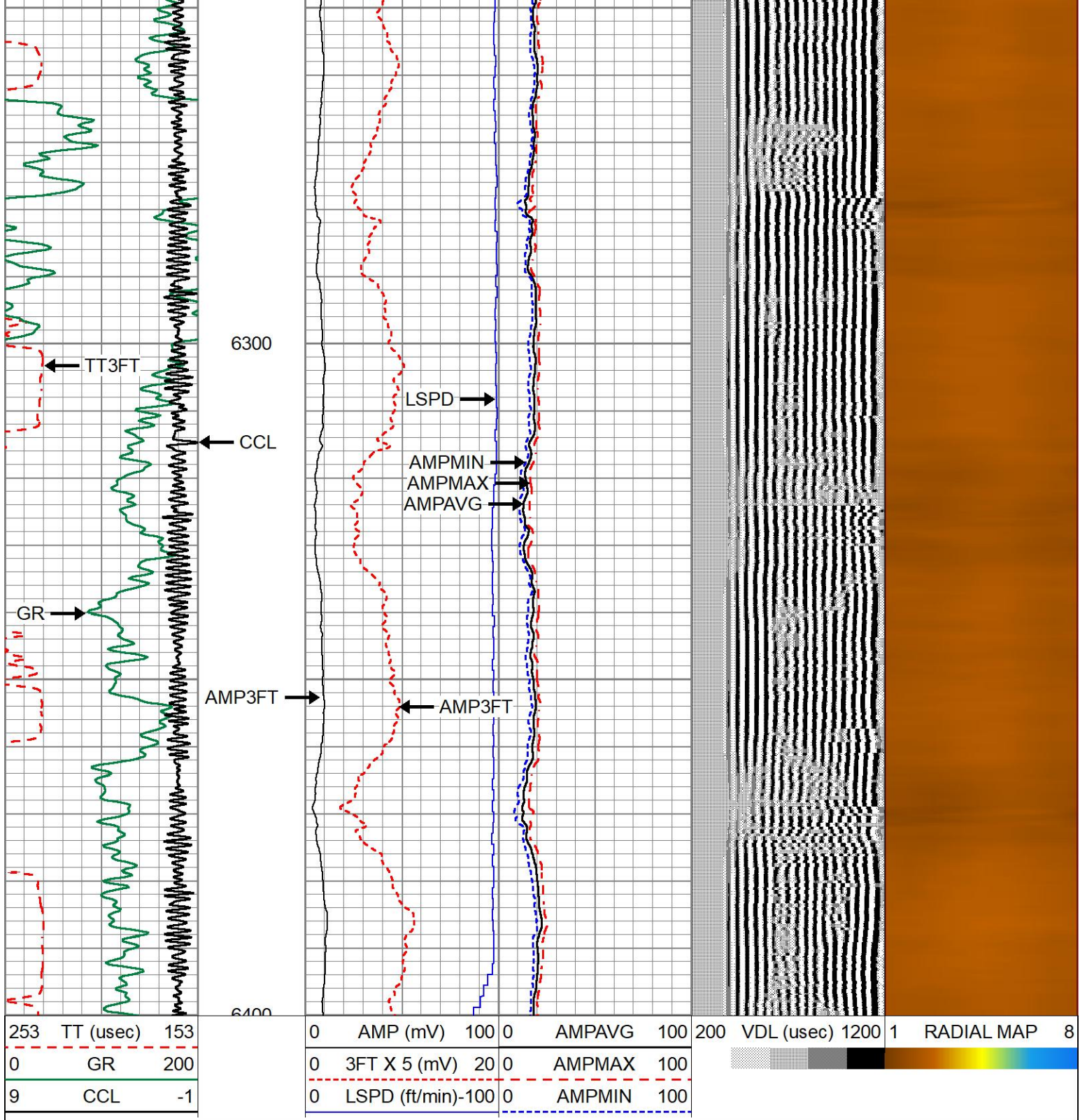




6100

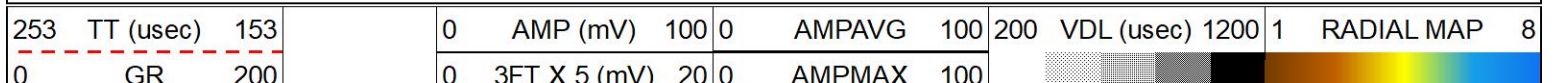
6200



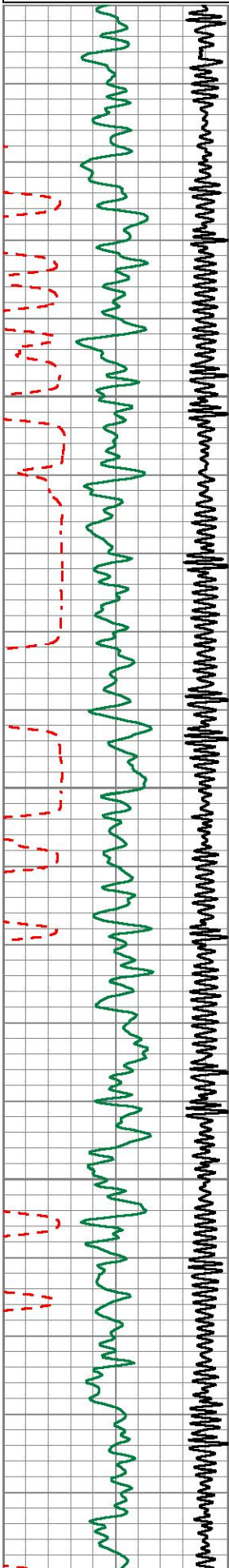


REPEAT PASS

Database File verdadresources_timbro fed 1931 07h_0512351204_061422_scbl.db
 Dataset Pathname pass3
 Presentation Format 1patriotradii
 Dataset Creation Tue Jun 14 16:46:43 2022
 Charted by Depth in Feet scaled 1:240

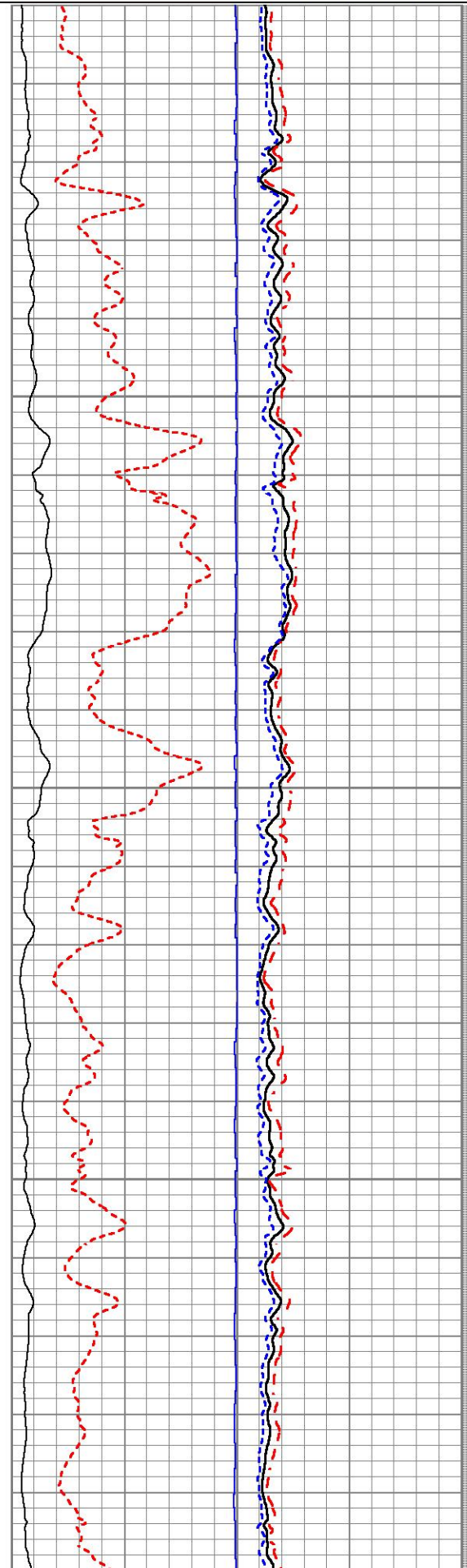


9 CCL -1

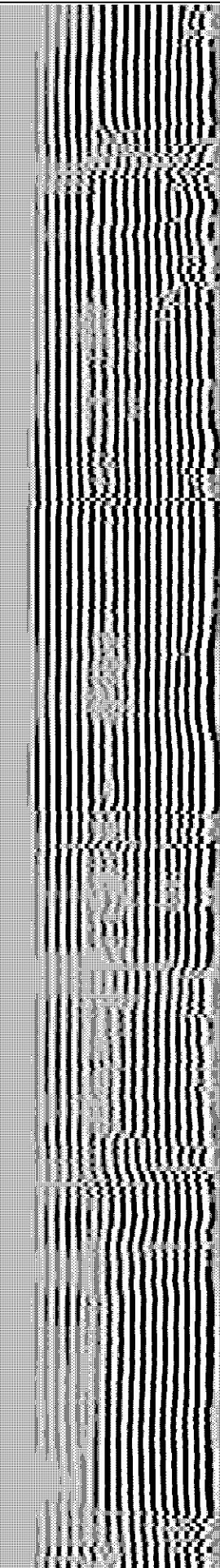


253 TT (usec) 153
 0 GR 200
 0 CCL -1

0 LSPD (ft/min)-100 0 AMPMIN 100



0 AMP (mV) 100 0 AMPAVG 100
 0 3FT X 5 (mV) 20 0 AMPMAX 100
 0 LSPD (ft/min) 100 0 AMPMIN 100



200 VDL (usec) 1200 1



RADIAL MAP 8

Calibration Report

Database File verdadresources_timbro fed 1931 07h_0512351204_061422_scbl.db
 Dataset Pathname pass5
 Dataset Creation Tue Jun 14 17:03:48 2022

Gamma Ray Calibration Report

Serial Number: 234GR4-267
 Tool Model: Tek-Co 2 3/4
 Performed: (Not Performed)
 Calibrator Value: 1.0
 Background Reading: 0.0 cps
 Calibrator Reading: 1.0 cps
 Sensitivity: 1.0000 /cps

Segmented Cement Bond Log Calibration Report

Serial Number: 234RIBT-2096
 Tool Model: 275 Temp JS
 Calibration Casing Diameter: 5.500 in
 Calibration Depth: 171.417 ft

Master Calibration, performed Mon Jun 13 12:16:42 2022:

	Raw (v)		Calibrated (mv)		Results	
	Zero	Cal	Zero	Cal	Gain	Offset
3'	0.000	1.865	0.000	71.921	38.558	0.000
CAL	0.000	1.109				
5'	0.000	2.395	0.000	71.921	30.026	0.000
SUM						
S1	0.000	1.812	0.000	71.921	39.684	0.000
S2	0.000	1.865	0.000	71.921	38.555	0.000
S3	0.000	1.952	0.000	71.921	36.837	0.000
S4	0.000	2.178	0.000	71.921	33.028	0.000
S5	0.000	2.414	0.000	71.921	29.793	0.000
S6	0.000	2.441	0.000	71.921	29.465	0.000
S7	0.000	2.159	0.000	71.921	33.317	0.000
S8	0.000	1.648	0.000	71.921	43.650	0.000

Internal Reference Calibration, performed (Not Performed):

	Raw (v)		Calibrated (v)		Results	
	Zero	Cal	Zero	Cal	Gain	Offset
CAL	0.000	0.000	0.000	1.109	1.000	0.000

Air Zero Calibration, performed Mon May 9 07:31:51 2022:

	Raw (v)		Calibrated (v)		Results	
	Zero		Zero			Offset
3'	0.000		0.000			0.000
5'	0.000		0.000			0.000
SUM						

S1	0.000	0.000	0.000
S2	0.000	0.000	0.000
S3	0.000	0.000	0.000
S4	0.000	0.000	0.000
S5	0.000	0.000	0.000
S6	0.000	0.000	0.000
S7	0.000	0.000	0.000
S8	0.000	0.000	0.000

Temperature Calibration Report

Serial Number: 234RIBT-2096
Tool Model: 275 Temp JS
Performed: (Not Performed)

	Reference		Reading	
Low Reference:	0.00	degF	0.00	usec
High Reference:	1.00	degF	1.00	usec
Gain:	1.00			
Offset:	0.00			
Delta Spacing	1			



Company	VERDAD RESOURCES LLC.		
Well	TIMBRO FED. 1931 07H		
Field	WILDCAT		
County	WELD		
State	CO	Country	USA