

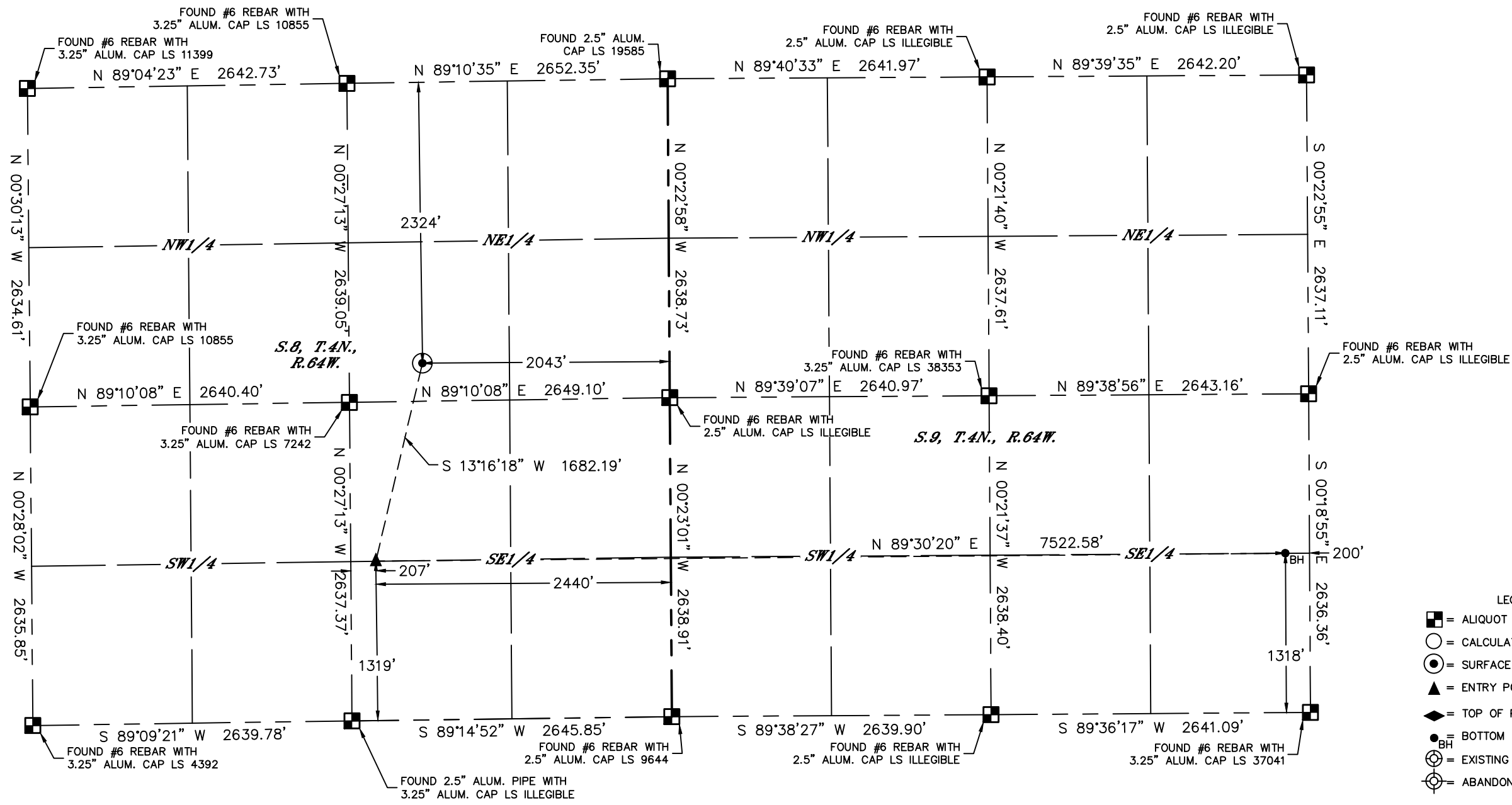


Lat40°, Inc. 6250 W. 10th Street, Unit 2, Greeley, CO 970-515-5294

# WELL LOCATION CERTIFICATE

HEN 17N  
PDC ENERGY

SECTION: 8  
TOWNSHIP: 4N  
RANGE: 64W  
6TH. P.M.  
WELD COUNTY, CO

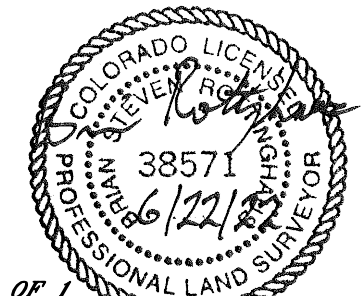
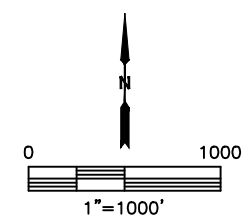


- LEGEND
- = ALIQUOT MONUMENT AS DESCRIBED
  - = CALCULATED POSITION
  - ⊙ = SURFACE HOLE LOCATION (SHL)
  - ▲ = ENTRY POINT LOCATION (EP)
  - ◆ = TOP OF PRODUCTIVE ZONE (PZONE)
  - = BOTTOM HOLE LOCATION (BHL)
  - ⊕ = EXISTING WELL
  - ⊗ = ABANDONED WELL

CLIENT: PDC ENERGY, INC.				LANDMAN: DARIN SPITZER					
INSTRUMENT OPERATOR: CASEY KOHOUT				SURVEY DATE: 10/14/2020					
SURFACE USE: RANGELAND									
SHL FOOTAGE	SHL LAT °	SHL LONG °	SHL PDOP	SHL ELEV (FT.)	SHL 1/4/1/4	SHLS-T-R			
2324	FNL	2043	FEL	40.32776	-104.57234	1.2	4779	SWNE	8-4-64

BHL FOOTAGE	BHL LAT °	BHL LONG °	BHL S-T-R	EP LAT °	EP LONG °	EP S-T-R			
1318	FSL	200	FEL	40.32323	-104.54682	9-4-64	40.32328	-104.57379	8-4-64

- NOTE:
- 1) Bearings shown are Grid Bearings of the Colorado State Plane Coordinate System, North Zone, North American Datum 1983. The lined dimensions as contained herein are based upon the "U.S. Survey Foot."
  - 2) Distances to section lines measured at 90 degrees from said section lines.
  - 3) Ground elevations are based on an observed GPS elevation (NAVD 1988 DATUM).
  - 4) Latitude and Longitude shown are (NAD 83 DATUM).
  - 5) IMPROVEMENTS: See LOCATION DRAWING for all visible improvements within 500' of oil and gas location.
  - 6) This map does not represent a boundary survey.



**SHEET 1 OF 1**  
 Brian S. Rottinghaus—On behalf of Lat40°, Inc.  
 Colorado Licensed Professional Land Surveyor No. 38571 DATE: 06/22/2022  
 PROJECT#: 2019090