

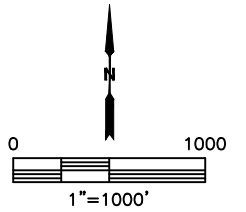
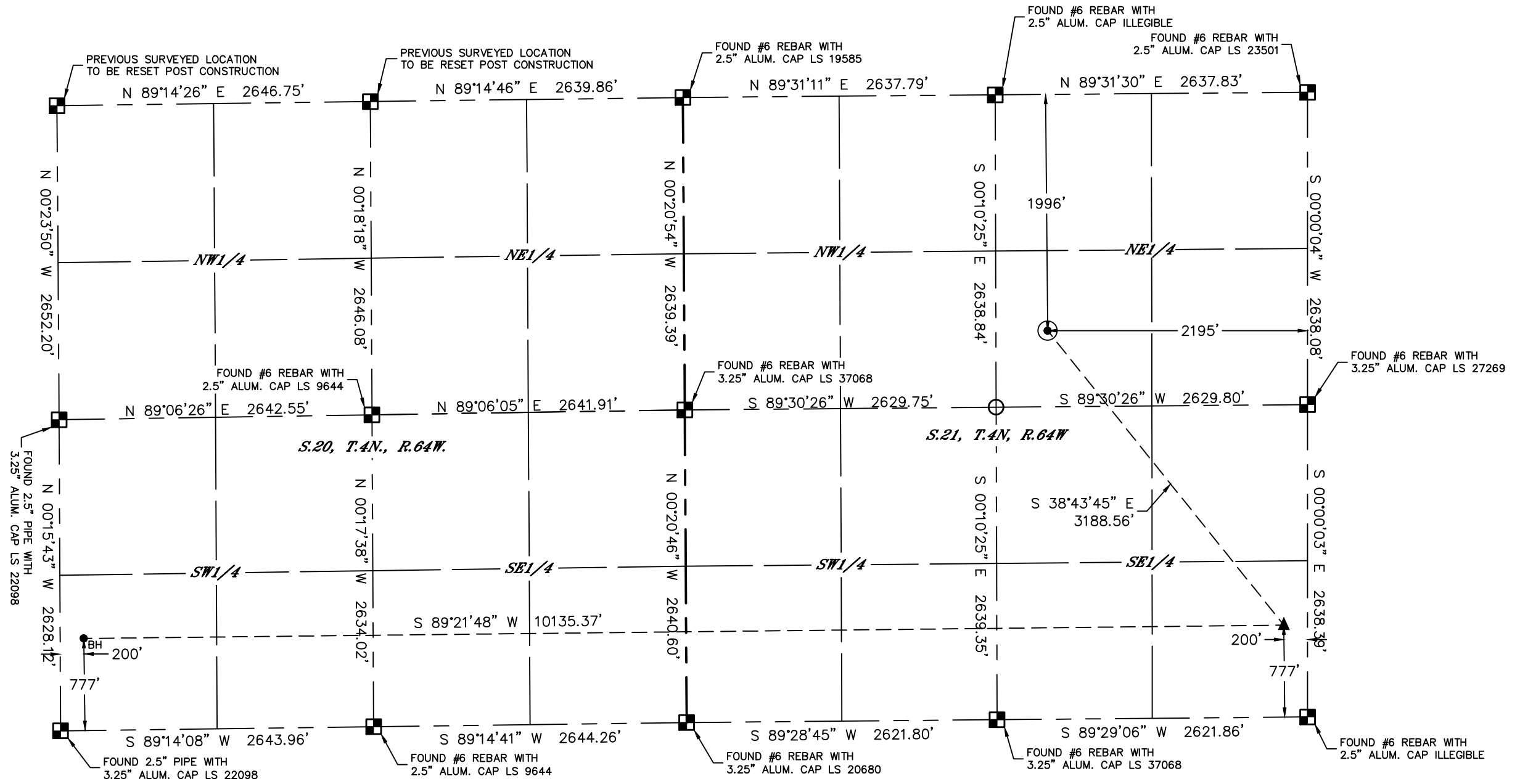


Lat40°, Inc. 6250 W. 10th Street, Unit 2, Greeley, CO 970-515-5294

WELL LOCATION CERTIFICATE

GEORGE 21N
PDC ENERGY

SECTION: 21
TOWNSHIP: 4N
RANGE: 64W
6TH. P.M.
WELD COUNTY, CO



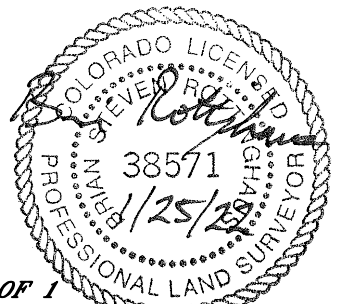
LEGEND

- = ALIQUOT MONUMENT AS DESCRIBED
- = CALCULATED POSITION
- = SURFACE HOLE LOCATION (SHL)
- ▲ = ENTRY POINT LOCATION (EP)
- ◆ = TOP OF PRODUCTIVE ZONE (PZONE)
- _{BH} = BOTTOM HOLE LOCATION (BHL)
- ⊕ = EXISTING WELL
- ⊖ = ABANDONED WELL

CLIENT: PDC ENERGY, INC.				LANDMAN: MAC NEUMANN					
INSTRUMENT OPERATOR: SCOTT SHERARD				SURVEY DATE: 5/5/2021		SURFACE USE: CROPLAND			
SHL FOOTAGE	SHL LAT°	SHL LONG°	SHL PDOP	SHL ELEV (FT.)	SHL 1/4/1/4	SHL S-T-R			
1996	FNL	2195	FEL	40.29969	-104.55418	1.6	4718	SWNE	21-4-64
BHL FOOTAGE	BHL LAT°	BHL LONG°	BHL S-T-R	EP LAT°	EP LONG°	EP S-T-R			
777	FSL	200	FWL	40.29279	-104.58345	20-4-64	40.29280	-104.54712	21-4-64

NOTE:

- 1) Bearings shown are Grid Bearings of the Colorado State Plane Coordinate System, North Zone, North American Datum 1983. The lineal dimensions as contained herein are based upon the "U.S. Survey Foot."
- 2) Distances to section lines measured at 90 degrees from said section lines.
- 3) Ground elevations are based on an observed GPS elevation (NAVD 1988 DATUM).
- 4) Latitude and Longitude shown are (NAD 83 DATUM).
- 5) IMPROVEMENTS: See LOCATION DRAWING for all visible improvements.
- 6) This map does not represent a boundary survey.



SHEET 1 OF 1
 Brian S. Rottinghaus—On behalf of Lat40°, Inc.
 Colorado Licensed Professional Land Surveyor No. 38571
 DATE: 01/25/2022
 PROJECT#: 2019049