

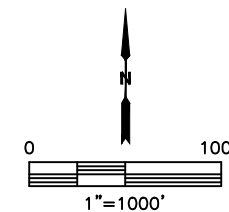
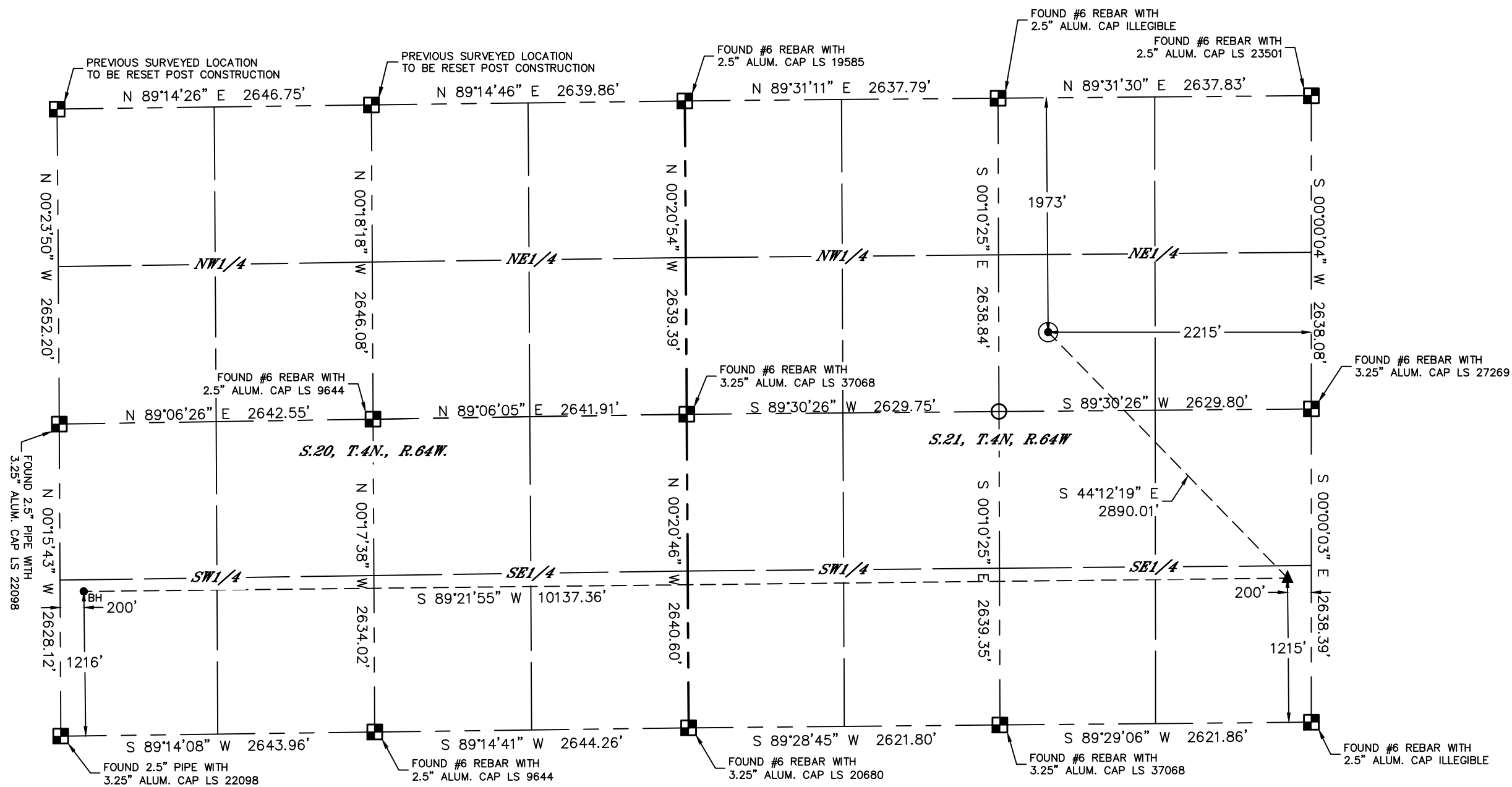


Lat40°, Inc. 6250 W. 10th Street, Unit 2, Greeley, CO 970-515-5294

# WELL LOCATION CERTIFICATE

**GEORGE 19NA**  
**PDC ENERGY**

SECTION: 21  
TOWNSHIP: 4N  
RANGE: 64W  
6TH. P.M.  
WELD COUNTY, CO



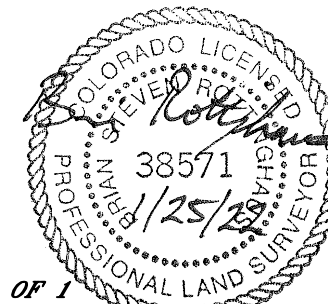
### LEGEND

- = ALIQUOT MONUMENT AS DESCRIBED
- = CALCULATED POSITION
- = SURFACE HOLE LOCATION (SHL)
- ▲ = ENTRY POINT LOCATION (EP)
- ◆ = TOP OF PRODUCTIVE ZONE (PZONE)
- <sub>BH</sub> = BOTTOM HOLE LOCATION (BHL)
- ⊕ = EXISTING WELL
- ⊖ = ABANDONED WELL

CLIENT: PDC ENERGY, INC.						LANDMAN: MAC NEUMANN			
INSTRUMENT OPERATOR: SCOTT SHERARD						SURVEY DATE: 5/5/2021			
SURFACE USE: CROPLAND									
SHL FOOTAGE	SHL LAT °	SHL LONG °	SHL PDOP	SHL ELEV (FT.)	SHL 1/4/1/4	SHL S-T-R			
1973	FNL	2215	FEL	40.29975	-104.55425	1.6	4718	SWNE	21-4-64
BHL FOOTAGE	BHL LAT °	BHL LONG °	BHL S-T-R	EP LAT °	EP LONG °	EP S-T-R			
1216	FSL	200	FWL	40.29399	-104.58344	20-4-64	40.29401	-104.54711	21-4-64

### NOTE:

- 1) Bearings shown are Grid Bearings of the Colorado State Plane Coordinate System, North Zone, North American Datum 1983. The lineal dimensions as contained herein are based upon the "U.S. Survey Foot."
- 2) Distances to section lines measured at 90 degrees from said section lines.
- 3) Ground elevations are based on an observed GPS elevation (NAVD 1988 DATUM).
- 4) Latitude and Longitude shown are (NAD 83 DATUM).
- 5) IMPROVEMENTS: See LOCATION DRAWING for all visible improvements.
- 6) This map does not represent a boundary survey.



**SHEET 1 OF 1**  
 Brian S. Rottinghaus—On behalf of Lat40°, Inc.  
 Colorado Licensed Professional Land Surveyor No. 38571  
 DATE: 01/25/2022  
 PROJECT#: 2019049