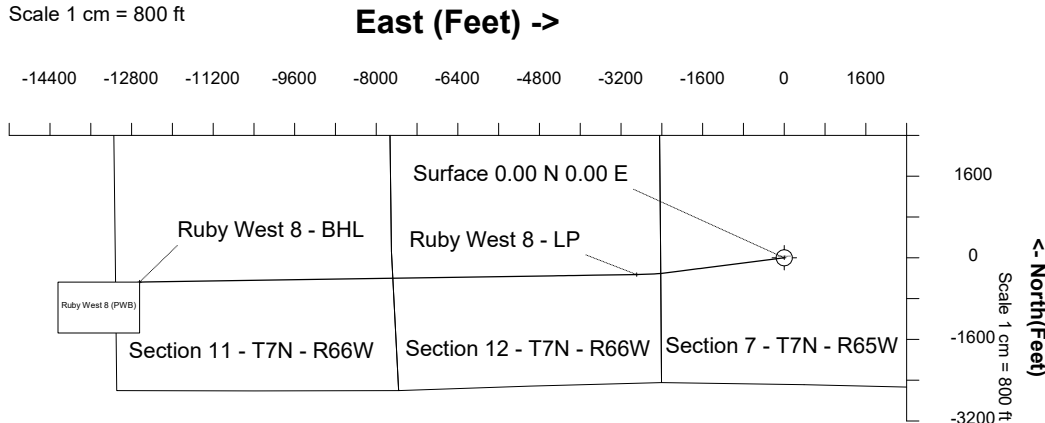
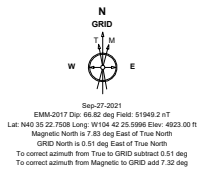


# BAYSWATER E&P, LLC

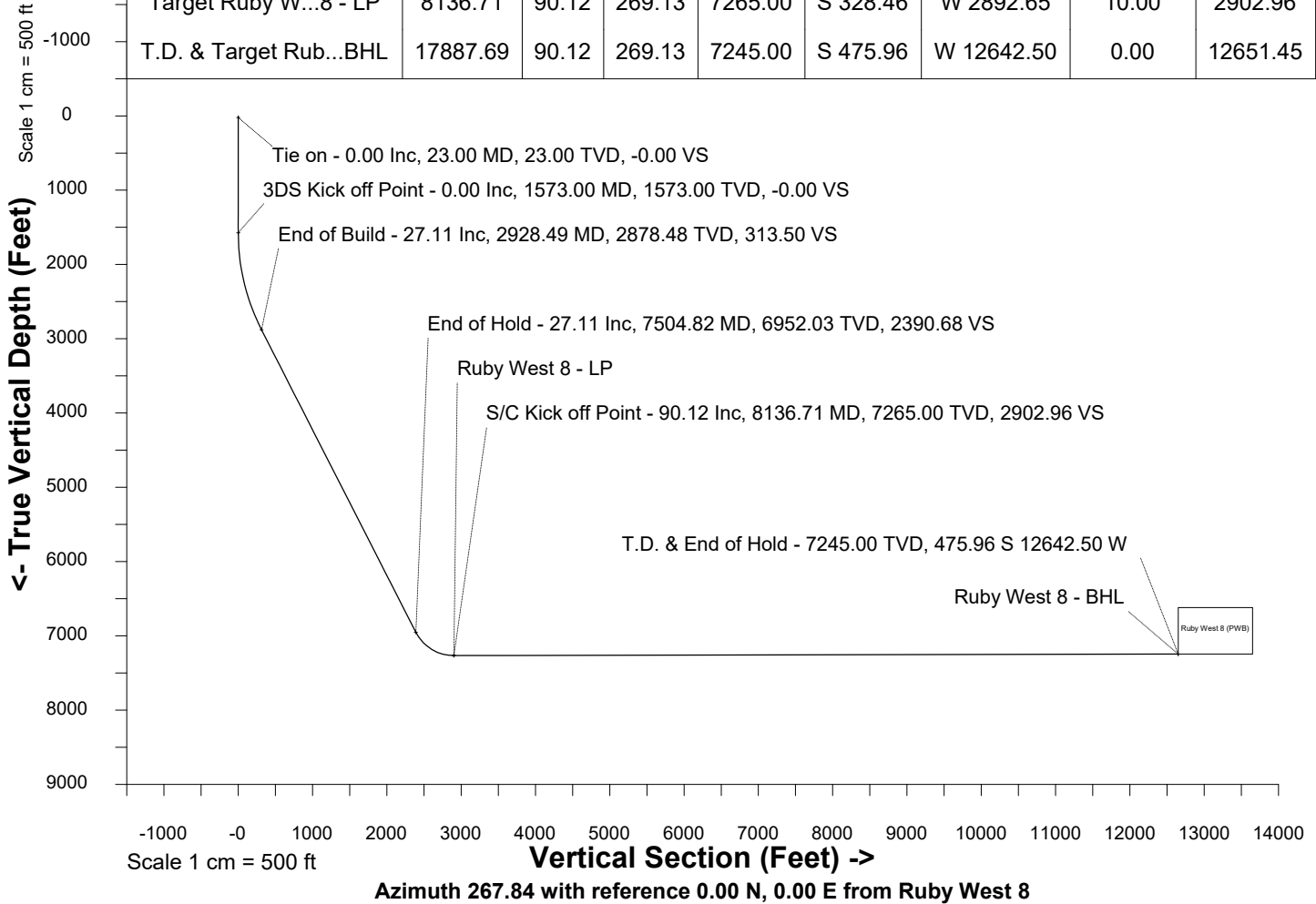
<b>Location</b> Weld County, CO	<b>Slot</b> Ruby West 8
<b>Field</b> WATTENBERG	<b>Well</b> Ruby West 8
<b>Installation</b> Ruby 7-J Pad	<b>Wellbore</b> Ruby West 8 (PWB)

Created by sean.dolfinger  
 Date plotted 28-Sep-2021  
 Plot reference is Ruby West 8 (PWB).  
 Ref wellpath is Ruby West 8 (PWP#1).  
 Coordinates are in Feet reference Ruby West 8.  
 True Vertical Depths are reference Rig Datum.  
 Measured Depths are reference Rig Datum.  
 Rig Datum: Planned Datum #1  
 Rig Datum to Mean Sea Level: 4945.00 ft.  
 Plot North is aligned to GRID North.



## WELL PROFILE DATA

Point	MD	Inc	Azi	TVD	North	East	deg/100ft	V. Sect
Tie on	23.00	0.00	0.00	23.00	S 0.00	W 0.00		-0.00
KOP	1573.00	0.00	262.75	1573.00	S 0.00	W 0.00	0.00	-0.00
End of Build	2928.49	27.11	262.75	2878.48	S 39.72	W 312.22	2.00	313.50
End of Hold	7504.82	27.11	262.75	6952.03	S 302.87	W 2380.98	0.00	2390.68
Target Ruby W...8 - LP	8136.71	90.12	269.13	7265.00	S 328.46	W 2892.65	10.00	2902.96
T.D. & Target Rub...BHL	17887.69	90.12	269.13	7245.00	S 475.96	W 12642.50	0.00	12651.45



SYSDRILL  
Well Design Combined Report  
Wellbore: Ruby West 8 (PWB)



Wellhead Details							
Name	Latitude	Longitude	Northing	Easting	North	East	Slot Elevation Above Ground
Ruby West 8	40.58936500	-104.70711500	1458531.5206	3220206.9064	104.93S	0.17W	0.00

Declination		
Date	Source	Time
Sep-27-2021	EMM-2017	13:43

Installation Details						
Name	Installation Position (Latitude)	Installation Position (Longitude)	Northing	Easting	Coord System Name	North Alignment
Ruby 7-J Pad	40.58965300	-104.70711100	1458636.4488	3220207.0791	NAD83 Colorado State Planes, North Zone, US Foot	Grid

Summary Wellpath								
MD[ft]	Inc[deg]	Azi[deg]	TVD[ft]	Vertical Depth SS	North[ft]	East[ft]	Dogleg [deg/100ft]	Vertical Section[ft]
23.00	0.00	0.00	23.00	-4922.00	0.00N	0.00E		0.00
1573.00	0.00	262.75	1573.00	-3372.00	0.00N	0.00E	==>	0.00
2928.49	27.11	262.75	2878.48	-2066.52	39.72S	312.22W	2.00	313.50
7504.82	27.11	262.75	6952.03	2007.03	302.87S	2380.98W	==>	2390.68
8136.71	90.12	269.13	7265.00	2320.00	328.46S	2892.65W	10.00	2902.96
17887.69	90.12	269.13	7245.00	2300.00	475.96S	12642.50W	==>	12651.45

Interpolated Wellpath									
MD[ft]	Inc[deg]	Azi[deg]	TVD[ft]	North[ft]	East[ft]	Dogleg [deg/100ft]	Vertical Section[ft]	Station Position (Latitude)	Station Position (Longitude)
0.00	0.00	0.00	0.00	0.00N	0.00E		0.00	40.58936500	-104.70711500
23.00	0.00	0.00	23.00	0.00N	0.00E	==>	0.00	40.58936500	-104.70711500
100.00	0.00	0.00	100.00	0.00N	0.00E	==>	0.00	40.58936500	-104.70711500
200.00	0.00	0.00	200.00	0.00N	0.00E	==>	0.00	40.58936500	-104.70711500
300.00	0.00	0.00	300.00	0.00N	0.00E	==>	0.00	40.58936500	-104.70711500
400.00	0.00	0.00	400.00	0.00N	0.00E	==>	0.00	40.58936500	-104.70711500
500.00	0.00	0.00	500.00	0.00N	0.00E	==>	0.00	40.58936500	-104.70711500
600.00	0.00	0.00	600.00	0.00N	0.00E	==>	0.00	40.58936500	-104.70711500
700.00	0.00	0.00	700.00	0.00N	0.00E	==>	0.00	40.58936500	-104.70711500
800.00	0.00	0.00	800.00	0.00N	0.00E	==>	0.00	40.58936500	-104.70711500
900.00	0.00	0.00	900.00	0.00N	0.00E	==>	0.00	40.58936500	-104.70711500
1000.00	0.00	0.00	1000.00	0.00N	0.00E	==>	0.00	40.58936500	-104.70711500
1100.00	0.00	0.00	1100.00	0.00N	0.00E	==>	0.00	40.58936500	-104.70711500
1200.00	0.00	0.00	1200.00	0.00N	0.00E	==>	0.00	40.58936500	-104.70711500
1300.00	0.00	0.00	1300.00	0.00N	0.00E	==>	0.00	40.58936500	-104.70711500
1400.00	0.00	0.00	1400.00	0.00N	0.00E	==>	0.00	40.58936500	-104.70711500
1500.00	0.00	0.00	1500.00	0.00N	0.00E	==>	0.00	40.58936500	-104.70711500
1573.00	0.00	262.75	1573.00	0.00N	0.00E	==>	0.00	40.58936500	-104.70711500
1673.00	2.00	262.75	1672.98	0.22S	1.73W	2.00	1.74	40.58936444	-104.70712124
1773.00	4.00	262.75	1772.84	0.88S	6.92W	2.00	6.95	40.58936275	-104.70713995
1873.00	6.00	262.75	1872.45	1.98S	15.57W	2.00	15.63	40.58935995	-104.70717111
1973.00	8.00	262.75	1971.70	3.52S	27.66W	2.00	27.77	40.58935602	-104.70721469
2073.00	10.00	262.75	2070.47	5.49S	43.17W	2.00	43.35	40.58935099	-104.70727062
2173.00	12.00	262.75	2168.62	7.90S	62.10W	2.00	62.36	40.58934484	-104.70733884
2273.00	14.00	262.75	2266.06	10.74S	84.42W	2.00	84.76	40.58933760	-104.70741927
2373.00	16.00	262.75	2362.64	14.00S	110.09W	2.00	110.54	40.58932927	-104.70751181
2473.00	18.00	262.75	2458.27	17.69S	139.09W	2.00	139.66	40.58931985	-104.70761635
2573.00	20.00	262.75	2552.82	21.80S	171.39W	2.00	172.09	40.58930937	-104.70773275
2673.00	22.00	262.75	2646.17	26.32S	206.94W	2.00	207.78	40.58929783	-104.70786089
2773.00	24.00	262.75	2738.21	31.25S	245.69W	2.00	246.70	40.58928525	-104.70800059
2873.00	26.00	262.75	2828.84	36.59S	287.62W	2.00	288.79	40.58927164	-104.70815169
2928.49	27.11	262.75	2878.48	39.72S	312.22W	2.00	313.50	40.58926365	-104.70824039

All data is in Feet unless otherwise stated  
Coordinates are from Slot MD's are from Rig and TVD's are from Rig ( Planned Datum #1 4945.0ft above Mean Sea Level )  
Vertical Section is from 0.00N 0.00E on azimuth 267.84 degrees  
Bottom hole distance is 12651.45 Feet on azimuth 267.84 degrees from Wellhead  
Calculation method uses Minimum Curvature method  
Prepared by  
Date Printed: 28-Sep-2021



Interpolated Wellpath									
MD[ft]	Inc[deg]	Azi[deg]	TVD[ft]	North[ft]	East[ft]	Dogleg [deg/100ft]	Vertical Section[ft]	Station Position (Latitude)	Station Position (Longitude)
2973.00	27.11	262.75	2918.10	42.28S	332.35W	==>	333.70	40.58925712	-104.70831292
3073.00	27.11	262.75	3007.11	48.03S	377.55W	==>	379.09	40.58924244	-104.70847586
3173.00	27.11	262.75	3096.12	53.78S	422.76W	==>	424.48	40.58922777	-104.70863880
3273.00	27.11	262.75	3185.14	59.53S	467.96W	==>	469.87	40.58921309	-104.70880174
3373.00	27.11	262.75	3274.15	65.28S	513.17W	==>	515.26	40.58919842	-104.70896468
3473.00	27.11	262.75	3363.16	71.03S	558.37W	==>	560.65	40.58918374	-104.70912762
3573.00	27.11	262.75	3452.18	76.78S	603.58W	==>	606.04	40.58916906	-104.70929055
3673.00	27.11	262.75	3541.19	82.53S	648.78W	==>	651.43	40.58915439	-104.70945349
3773.00	27.11	262.75	3630.20	88.28S	693.99W	==>	696.82	40.58913971	-104.70961643
3873.00	27.11	262.75	3719.22	94.03S	739.19W	==>	742.21	40.58912503	-104.70977937
3973.00	27.11	262.75	3808.23	99.78S	784.40W	==>	787.60	40.58911036	-104.70994231
4073.00	27.11	262.75	3897.24	105.53S	829.61W	==>	832.99	40.58909568	-104.71010525
4173.00	27.11	262.75	3986.26	111.28S	874.81W	==>	878.38	40.58908100	-104.71026819
4273.00	27.11	262.75	4075.27	117.03S	920.02W	==>	923.77	40.58906633	-104.71043113
4373.00	27.11	262.75	4164.29	122.78S	965.22W	==>	969.16	40.58905165	-104.71059407
4473.00	27.11	262.75	4253.30	128.53S	1010.43W	==>	1014.55	40.58903697	-104.71075701
4573.00	27.11	262.75	4342.31	134.28S	1055.63W	==>	1059.94	40.58902229	-104.71091994
4673.00	27.11	262.75	4431.33	140.03S	1100.84W	==>	1105.33	40.58900761	-104.71108288
4773.00	27.11	262.75	4520.34	145.78S	1146.04W	==>	1150.72	40.58899293	-104.71124582
4873.00	27.11	262.75	4609.35	151.53S	1191.25W	==>	1196.11	40.58897825	-104.71140876
4973.00	27.11	262.75	4698.37	157.28S	1236.45W	==>	1241.50	40.58896357	-104.71157170
5073.00	27.11	262.75	4787.38	163.03S	1281.66W	==>	1286.89	40.58894890	-104.71173464
5173.00	27.11	262.75	4876.39	168.78S	1326.87W	==>	1332.28	40.58893422	-104.71189757
5273.00	27.11	262.75	4965.41	174.53S	1372.07W	==>	1377.67	40.58891954	-104.71206051
5373.00	27.11	262.75	5054.42	180.28S	1417.28W	==>	1423.05	40.58890486	-104.71222345
5473.00	27.11	262.75	5143.43	186.03S	1462.48W	==>	1468.44	40.58889017	-104.71238639
5573.00	27.11	262.75	5232.45	191.78S	1507.69W	==>	1513.83	40.58887549	-104.71254933
5673.00	27.11	262.75	5321.46	197.53S	1552.89W	==>	1559.22	40.58886081	-104.71271226
5773.00	27.11	262.75	5410.47	203.28S	1598.10W	==>	1604.61	40.58884613	-104.71287520
5873.00	27.11	262.75	5499.49	209.03S	1643.30W	==>	1650.00	40.58883145	-104.71303814
5973.00	27.11	262.75	5588.50	214.78S	1688.51W	==>	1695.39	40.58881677	-104.71320108
6073.00	27.11	262.75	5677.51	220.53S	1733.71W	==>	1740.78	40.58880209	-104.71336402
6173.00	27.11	262.75	5766.53	226.28S	1778.92W	==>	1786.17	40.58878740	-104.71352695
6273.00	27.11	262.75	5855.54	232.03S	1824.12W	==>	1831.56	40.58877272	-104.71368989
6373.00	27.11	262.75	5944.56	237.78S	1869.33W	==>	1876.95	40.58875804	-104.71385283
6473.00	27.11	262.75	6033.57	243.53S	1914.54W	==>	1922.34	40.58874336	-104.71401577
6573.00	27.11	262.75	6122.58	249.28S	1959.74W	==>	1967.73	40.58872867	-104.71417870
6673.00	27.11	262.75	6211.60	255.03S	2004.95W	==>	2013.12	40.58871399	-104.71434164
6773.00	27.11	262.75	6300.61	260.78S	2050.15W	==>	2058.51	40.58869931	-104.71450458
6873.00	27.11	262.75	6389.62	266.53S	2095.36W	==>	2103.90	40.58868462	-104.71466751
6973.00	27.11	262.75	6478.64	272.28S	2140.56W	==>	2149.29	40.58866994	-104.71483045
7073.00	27.11	262.75	6567.65	278.03S	2185.77W	==>	2194.68	40.58865526	-104.71499339
7173.00	27.11	262.75	6656.66	283.78S	2230.97W	==>	2240.07	40.58864057	-104.71515632
7273.00	27.11	262.75	6745.68	289.53S	2276.18W	==>	2285.46	40.58862589	-104.71531926
7373.00	27.11	262.75	6834.69	295.29S	2321.38W	==>	2330.85	40.58861120	-104.71548220
7473.00	27.11	262.75	6923.70	301.04S	2366.59W	==>	2376.24	40.58859652	-104.71564513
7504.82	27.11	262.75	6952.03	302.87S	2380.98W	==>	2390.68	40.58859184	-104.71569698
7573.00	33.88	264.27	7010.74	306.73S	2415.34W	10.00	2425.17	40.58858208	-104.71582082
7673.00	43.84	265.73	7088.51	312.10S	2477.77W	10.00	2487.76	40.58856884	-104.71604577
7773.00	53.81	266.74	7154.26	316.98S	2552.79W	10.00	2562.91	40.58855726	-104.71631601
7873.00	63.79	267.52	7205.99	321.23S	2638.11W	10.00	2648.33	40.58854769	-104.71662334
7973.00	73.77	268.18	7242.14	324.70S	2731.15W	10.00	2741.43	40.58854041	-104.71695842
8073.00	83.76	268.77	7261.60	327.30S	2829.08W	10.00	2839.39	40.58853565	-104.71731106
8136.71	90.12	269.13	7265.00	328.46S	2892.65W	10.00	2902.96	40.58853400	-104.71754000
8173.00	90.12	269.13	7264.93	329.01S	2928.94W	==>	2939.24	40.58853337	-104.71767065
8273.00	90.12	269.13	7264.72	330.52S	3028.93W	==>	3039.22	40.58853164	-104.71803068
8373.00	90.12	269.13	7264.52	332.03S	3128.91W	==>	3139.19	40.58852991	-104.71839072
8473.00	90.12	269.13	7264.31	333.55S	3228.90W	==>	3239.16	40.58852818	-104.71875075

All data is in Feet unless otherwise stated  
Coordinates are from Slot MD's are from Rig and TVD's are from Rig ( Planned Datum #1 4945.0ft above Mean Sea Level )  
Vertical Section is from 0.00N 0.00E on azimuth 267.84 degrees  
Bottom hole distance is 12651.45 Feet on azimuth 267.84 degrees from Wellhead  
Calculation method uses Minimum Curvature method  
Prepared by  
Date Printed: 28-Sep-2021

SYS DRILL  
Well Design Combined Report  
Wellbore: Ruby West 8 (PWB)



Interpolated Wellpath									
MD[ft]	Inc[deg]	Azi[deg]	TVD[ft]	North[ft]	East[ft]	Dogleg [deg/100ft]	Vertical Section[ft]	Station Position (Latitude)	Station Position (Longitude)
8573.00	90.12	269.13	7264.11	335.06S	3328.89W	==>	3339.14	40.58852644	-104.71911079
8673.00	90.12	269.13	7263.90	336.57S	3428.88W	==>	3439.11	40.58852471	-104.71947083
8773.00	90.12	269.13	7263.69	338.09S	3528.87W	==>	3539.09	40.58852297	-104.71983086
8873.00	90.12	269.13	7263.49	339.60S	3628.86W	==>	3639.06	40.58852123	-104.72019090
8973.00	90.12	269.13	7263.28	341.11S	3728.84W	==>	3739.04	40.58851949	-104.72055094
9073.00	90.12	269.13	7263.08	342.62S	3828.83W	==>	3839.01	40.58851775	-104.72091097
9173.00	90.12	269.13	7262.87	344.14S	3928.82W	==>	3938.99	40.58851601	-104.72127101
9273.00	90.12	269.13	7262.67	345.65S	4028.81W	==>	4038.96	40.58851427	-104.72163105
9373.00	90.12	269.13	7262.46	347.16S	4128.80W	==>	4138.94	40.58851253	-104.72199108
9473.00	90.12	269.13	7262.26	348.67S	4228.79W	==>	4238.91	40.58851078	-104.72235112
9573.00	90.12	269.13	7262.05	350.19S	4328.77W	==>	4338.88	40.58850904	-104.72271115
9673.00	90.12	269.13	7261.85	351.70S	4428.76W	==>	4438.86	40.58850729	-104.72307119
9773.00	90.12	269.13	7261.64	353.21S	4528.75W	==>	4538.83	40.58850554	-104.72343123
9873.00	90.12	269.13	7261.44	354.72S	4628.74W	==>	4638.81	40.58850379	-104.72379126
9973.00	90.12	269.13	7261.23	356.24S	4728.73W	==>	4738.78	40.58850204	-104.72415130
10073.00	90.12	269.13	7261.03	357.75S	4828.72W	==>	4838.76	40.58850029	-104.72451134
10173.00	90.12	269.13	7260.82	359.26S	4928.70W	==>	4938.73	40.58849854	-104.72487137
10273.00	90.12	269.13	7260.62	360.78S	5028.69W	==>	5038.71	40.58849679	-104.72523141
10373.00	90.12	269.13	7260.41	362.29S	5128.68W	==>	5138.68	40.58849503	-104.72559144
10473.00	90.12	269.13	7260.21	363.80S	5228.67W	==>	5238.65	40.58849328	-104.72595148
10573.00	90.12	269.13	7260.00	365.31S	5328.66W	==>	5338.63	40.58849152	-104.72631152
10673.00	90.12	269.13	7259.80	366.83S	5428.65W	==>	5438.60	40.58848976	-104.72667155
10773.00	90.12	269.13	7259.59	368.34S	5528.63W	==>	5538.58	40.58848800	-104.72703159
10873.00	90.12	269.13	7259.39	369.85S	5628.62W	==>	5638.55	40.58848624	-104.72739162
10973.00	90.12	269.13	7259.18	371.36S	5728.61W	==>	5738.53	40.58848448	-104.72775166
11073.00	90.12	269.13	7258.98	372.88S	5828.60W	==>	5838.50	40.58848272	-104.72811170
11173.00	90.12	269.13	7258.77	374.39S	5928.59W	==>	5938.48	40.58848096	-104.72847173
11273.00	90.12	269.13	7258.57	375.90S	6028.58W	==>	6038.45	40.58847919	-104.72883177
11373.00	90.12	269.13	7258.36	377.41S	6128.56W	==>	6138.42	40.58847743	-104.72919180
11473.00	90.12	269.13	7258.16	378.93S	6228.55W	==>	6238.40	40.58847566	-104.72955184
11573.00	90.12	269.13	7257.95	380.44S	6328.54W	==>	6338.37	40.58847389	-104.72991188
11673.00	90.12	269.13	7257.75	381.95S	6428.53W	==>	6438.35	40.58847212	-104.73027191
11773.00	90.12	269.13	7257.54	383.46S	6528.52W	==>	6538.32	40.58847035	-104.73063195
11873.00	90.12	269.13	7257.34	384.98S	6628.51W	==>	6638.30	40.58846858	-104.73099198
11973.00	90.12	269.13	7257.13	386.49S	6728.49W	==>	6738.27	40.58846681	-104.73135202
12073.00	90.12	269.13	7256.93	388.00S	6828.48W	==>	6838.25	40.58846503	-104.73171206
12173.00	90.12	269.13	7256.72	389.52S	6928.47W	==>	6938.22	40.58846326	-104.73207209
12273.00	90.12	269.13	7256.52	391.03S	7028.46W	==>	7038.19	40.58846148	-104.73243213
12373.00	90.12	269.13	7256.31	392.54S	7128.45W	==>	7138.17	40.58845971	-104.73279216
12473.00	90.12	269.13	7256.11	394.05S	7228.44W	==>	7238.14	40.58845793	-104.73315220
12573.00	90.12	269.13	7255.90	395.57S	7328.42W	==>	7338.12	40.58845615	-104.73351223
12673.00	90.12	269.13	7255.70	397.08S	7428.41W	==>	7438.09	40.58845437	-104.73387227
12773.00	90.12	269.13	7255.49	398.59S	7528.40W	==>	7538.07	40.58845259	-104.73423231
12873.00	90.12	269.13	7255.29	400.10S	7628.39W	==>	7638.04	40.58845081	-104.73459234
12973.00	90.12	269.13	7255.08	401.62S	7728.38W	==>	7738.02	40.58844902	-104.73495238
13073.00	90.12	269.13	7254.88	403.13S	7828.37W	==>	7837.99	40.58844724	-104.73531241
13173.00	90.12	269.13	7254.67	404.64S	7928.35W	==>	7937.96	40.58844545	-104.73567245
13273.00	90.12	269.13	7254.47	406.15S	8028.34W	==>	8037.94	40.58844367	-104.73603248
13373.00	90.12	269.13	7254.26	407.67S	8128.33W	==>	8137.91	40.58844188	-104.73639252
13473.00	90.12	269.13	7254.05	409.18S	8228.32W	==>	8237.89	40.58844009	-104.73675255
13573.00	90.12	269.13	7253.85	410.69S	8328.31W	==>	8337.86	40.58843830	-104.73711259
13673.00	90.12	269.13	7253.64	412.21S	8428.30W	==>	8437.84	40.58843651	-104.73747263
13773.00	90.12	269.13	7253.44	413.72S	8528.28W	==>	8537.81	40.58843472	-104.73783266
13873.00	90.12	269.13	7253.23	415.23S	8628.27W	==>	8637.79	40.58843292	-104.73819270
13973.00	90.12	269.13	7253.03	416.74S	8728.26W	==>	8737.76	40.58843113	-104.73855273
14073.00	90.12	269.13	7252.82	418.26S	8828.25W	==>	8837.74	40.58842933	-104.73891277
14173.00	90.12	269.13	7252.62	419.77S	8928.24W	==>	8937.71	40.58842754	-104.73927280
14273.00	90.12	269.13	7252.41	421.28S	9028.23W	==>	9037.68	40.58842574	-104.73963284
14373.00	90.12	269.13	7252.21	422.79S	9128.21W	==>	9137.66	40.58842394	-104.73999287

All data is in Feet unless otherwise stated  
Coordinates are from Slot MD's are from Rig and TVD's are from Rig ( Planned Datum #1 4945.0ft above Mean Sea Level )  
Vertical Section is from 0.00N 0.00E on azimuth 267.84 degrees  
Bottom hole distance is 12651.45 Feet on azimuth 267.84 degrees from Wellhead  
Calculation method uses Minimum Curvature method  
Prepared by  
Date Printed: 28-Sep-2021

SYSDRILL  
Well Design Combined Report  
Wellbore: Ruby West 8 (PWB)



Interpolated Wellpath									
MD[ft]	Inc[deg]	Azi[deg]	TVD[ft]	North[ft]	East[ft]	Dogleg [deg/100ft]	Vertical Section[ft]	Station Position (Latitude)	Station Position (Longitude)
14473.00	90.12	269.13	7252.00	424.31S	9228.20W	==>	9237.63	40.58842214	-104.74035291
14573.00	90.12	269.13	7251.80	425.82S	9328.19W	==>	9337.61	40.58842034	-104.74071294
14673.00	90.12	269.13	7251.59	427.33S	9428.18W	==>	9437.58	40.58841853	-104.74107298
14773.00	90.12	269.13	7251.39	428.84S	9528.17W	==>	9537.56	40.58841673	-104.74143301
14873.00	90.12	269.13	7251.18	430.36S	9628.16W	==>	9637.53	40.58841493	-104.74179305
14973.00	90.12	269.13	7250.98	431.87S	9728.14W	==>	9737.51	40.58841312	-104.74215309
15073.00	90.12	269.13	7250.77	433.38S	9828.13W	==>	9837.48	40.58841131	-104.74251312
15173.00	90.12	269.13	7250.57	434.90S	9928.12W	==>	9937.45	40.58840951	-104.74287316
15273.00	90.12	269.13	7250.36	436.41S	10028.11W	==>	10037.43	40.58840770	-104.74323319
15373.00	90.12	269.13	7250.16	437.92S	10128.10W	==>	10137.40	40.58840589	-104.74359323
15473.00	90.12	269.13	7249.95	439.43S	10228.09W	==>	10237.38	40.58840408	-104.74395326
15573.00	90.12	269.13	7249.75	440.95S	10328.07W	==>	10337.35	40.58840226	-104.74431330
15673.00	90.12	269.13	7249.54	442.46S	10428.06W	==>	10437.33	40.58840045	-104.74467333
15773.00	90.12	269.13	7249.34	443.97S	10528.05W	==>	10537.30	40.58839864	-104.74503337
15873.00	90.12	269.13	7249.13	445.48S	10628.04W	==>	10637.28	40.58839682	-104.74539340
15973.00	90.12	269.13	7248.93	447.00S	10728.03W	==>	10737.25	40.58839500	-104.74575344
16073.00	90.12	269.13	7248.72	448.51S	10828.02W	==>	10837.22	40.58839318	-104.74611347
16173.00	90.12	269.13	7248.52	450.02S	10928.01W	==>	10937.20	40.58839137	-104.74647351
16273.00	90.12	269.13	7248.31	451.53S	11027.99W	==>	11037.17	40.58838955	-104.74683354
16373.00	90.12	269.13	7248.11	453.05S	11127.98W	==>	11137.15	40.58838772	-104.74719358
16473.00	90.12	269.13	7247.90	454.56S	11227.97W	==>	11237.12	40.58838590	-104.74755361
16573.00	90.12	269.13	7247.70	456.07S	11327.96W	==>	11337.10	40.58838408	-104.74791365
16673.00	90.12	269.13	7247.49	457.59S	11427.95W	==>	11437.07	40.58838225	-104.74827368
16773.00	90.12	269.13	7247.29	459.10S	11527.94W	==>	11537.05	40.58838043	-104.74863372
16873.00	90.12	269.13	7247.08	460.61S	11627.92W	==>	11637.02	40.58837860	-104.74899375
16973.00	90.12	269.13	7246.88	462.12S	11727.91W	==>	11736.99	40.58837677	-104.74935379
17073.00	90.12	269.13	7246.67	463.64S	11827.90W	==>	11836.97	40.58837494	-104.74971382
17173.00	90.12	269.13	7246.47	465.15S	11927.89W	==>	11936.94	40.58837311	-104.75007386
17273.00	90.12	269.13	7246.26	466.66S	12027.88W	==>	12036.92	40.58837128	-104.75043389
17373.00	90.12	269.13	7246.06	468.17S	12127.87W	==>	12136.89	40.58836945	-104.75079393
17473.00	90.12	269.13	7245.85	469.69S	12227.85W	==>	12236.87	40.58836762	-104.75115396
17573.00	90.12	269.13	7245.65	471.20S	12327.84W	==>	12336.84	40.58836578	-104.75151399
17673.00	90.12	269.13	7245.44	472.71S	12427.83W	==>	12436.82	40.58836395	-104.75187403
17773.00	90.12	269.13	7245.24	474.22S	12527.82W	==>	12536.79	40.58836211	-104.75223406
17873.00	90.12	269.13	7245.03	475.74S	12627.81W	==>	12636.77	40.58836027	-104.75259410
17887.69	90.12	269.13	7245.00	475.96S	12642.50W	==>	12651.45	40.58836000	-104.75264700

All data is in Feet unless otherwise stated  
Coordinates are from Slot MD's are from Rig and TVD's are from Rig ( Planned Datum #1 4945.0ft above Mean Sea Level )  
Vertical Section is from 0.00N 0.00E on azimuth 267.84 degrees  
Bottom hole distance is 12651.45 Feet on azimuth 267.84 degrees from Wellhead  
Calculation method uses Minimum Curvature method  
Prepared by  
Date Printed: 28-Sep-2021



Targets							
Name	North[ft]	East[ft]	TVD[ft]	Latitude	Longitude	Northing	Easting
Ruby West 8 - LP	328.46S	2892.65W	7265.00	40.58853400	-104.71754000	1458203.07	3217314.33
Ruby West 8 - BHL	475.96S	12642.50W	7245.00	40.58836000	-104.75264700	1458055.57	3207564.76

Survey Tool Program						
Reference	Survey Name	MD[ft]	TVD[ft]	Survey Tool	Error Model	
1026542	Planned	1573.00	1573.00	WdW Rate Gyro	Standard	
1026541	Planned	17887.69	7245.00	ISWWSA MWD	Rev 4 + SAG + FLT	

Notes