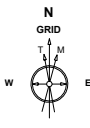


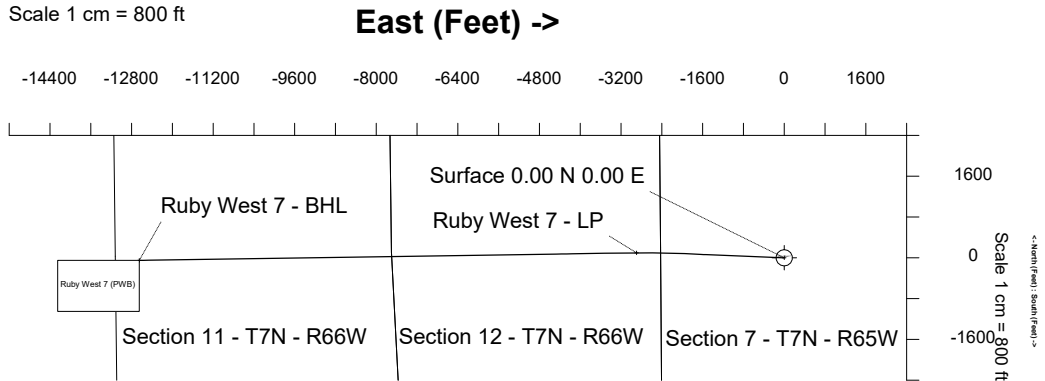
BAYSWATER E&P, LLC

Location	Weld County, CO	Slot	Ruby West 7
Field	WATTENBERG	Well	Ruby West 7
Installation	Ruby 7-J Pad	Wellbore	Ruby West 7 (PWB)

Created by sean.dolfinger
 Date plotted 28-Sep-2021
 Plot reference is Ruby West 7 (PWB).
 Ref wellpath is Ruby West 7 (PWP#1).
 Coordinates are in Feet reference Ruby West 7.
 True Vertical Depths are reference Rig Datum.
 Measured Depths are reference Rig Datum.
 Rig Datum: Planned Datum #1
 Rig Datum to Mean Sea Level: 4945.00 ft.
 Plot North is aligned to GRID North.

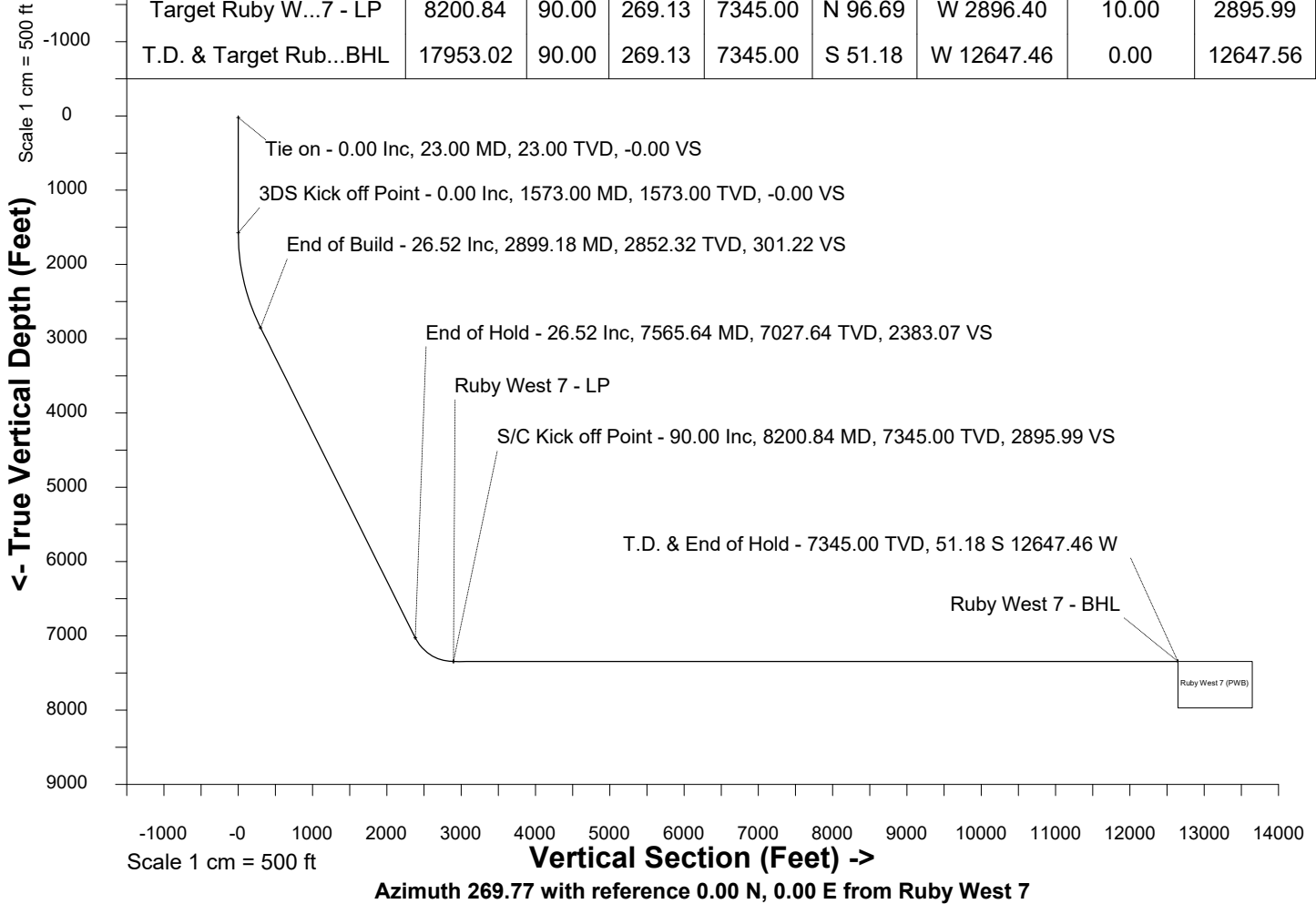


Sep-27-2021
 EMM-2017 Dip: 66.82 deg Field: 51949.2 nT
 Lat: N40 35 22.7508 Long: W104 42 25.5996 Elev: 4923.00 ft
 Magnetic North is 7.83 deg East of True North
 GRID North is 0.51 deg East of True North
 To correct azimuth from True to GRID subtract 0.51 deg
 To correct azimuth from Magnetic to GRID add 7.32 deg



WELL PROFILE DATA

Point	MD	Inc	Azi	TVD	North	East	deg/100ft	V. Sect
Tie on	23.00	0.00	0.00	23.00	S 0.00	W 0.00		-0.00
KOP	1573.00	0.00	272.30	1573.00	S 0.00	W 0.00	0.00	-0.00
End of Build	2899.18	26.52	272.30	2852.32	N 12.10	W 301.27	2.00	301.22
End of Hold	7565.64	26.52	272.30	7027.64	N 95.71	W 2383.48	0.00	2383.07
Target Ruby W...7 - LP	8200.84	90.00	269.13	7345.00	N 96.69	W 2896.40	10.00	2895.99
T.D. & Target Rub...BHL	17953.02	90.00	269.13	7345.00	S 51.18	W 12647.46	0.00	12647.56



SYSDRILL
Well Design Combined Report
Wellbore: Ruby West 7 (PWB)



Wellhead Details							
Name	Latitude	Longitude	Northing	Easting	North	East	Slot Elevation Above Ground
Ruby West 7	40.58940600	-104.70711400	1458546.4594	3220207.0505	89.99S	0.03W	0.00

Declination		
Date	Source	Time
Sep-27-2021	EMM-2017	13:43

Installation Details						
Name	Installation Position (Latitude)	Installation Position (Longitude)	Northing	Easting	Coord System Name	North Alignment
Ruby 7-J Pad	40.58965300	-104.70711100	1458636.4488	3220207.0791	NAD83 Colorado State Planes, North Zone, US Foot	Grid

Summary Wellpath								
MD[ft]	Inc[deg]	Azi[deg]	TVD[ft]	Vertical Depth SS	North[ft]	East[ft]	Dogleg [deg/100ft]	Vertical Section[ft]
23.00	0.00	0.00	23.00	-4922.00	0.00N	0.00E		0.00
1573.00	0.00	272.30	1573.00	-3372.00	0.00N	0.00E	==>	0.00
2899.18	26.52	272.30	2852.32	-2092.68	12.10N	301.27W	2.00	301.22
7565.64	26.52	272.30	7027.64	2082.64	95.71N	2383.48W	==>	2383.07
8200.84	90.00	269.13	7345.00	2400.00	96.69N	2896.40W	10.00	2895.99
17953.02	90.00	269.13	7345.00	2400.00	51.18S	12647.46W	==>	12647.56

Interpolated Wellpath									
MD[ft]	Inc[deg]	Azi[deg]	TVD[ft]	North[ft]	East[ft]	Dogleg [deg/100ft]	Vertical Section[ft]	Station Position (Latitude)	Station Position (Longitude)
0.00	0.00	0.00	0.00	0.00N	0.00E		0.00	40.58940600	-104.70711400
23.00	0.00	0.00	23.00	0.00N	0.00E	==>	0.00	40.58940600	-104.70711400
100.00	0.00	0.00	100.00	0.00N	0.00E	==>	0.00	40.58940600	-104.70711400
200.00	0.00	0.00	200.00	0.00N	0.00E	==>	0.00	40.58940600	-104.70711400
300.00	0.00	0.00	300.00	0.00N	0.00E	==>	0.00	40.58940600	-104.70711400
400.00	0.00	0.00	400.00	0.00N	0.00E	==>	0.00	40.58940600	-104.70711400
500.00	0.00	0.00	500.00	0.00N	0.00E	==>	0.00	40.58940600	-104.70711400
600.00	0.00	0.00	600.00	0.00N	0.00E	==>	0.00	40.58940600	-104.70711400
700.00	0.00	0.00	700.00	0.00N	0.00E	==>	0.00	40.58940600	-104.70711400
800.00	0.00	0.00	800.00	0.00N	0.00E	==>	0.00	40.58940600	-104.70711400
900.00	0.00	0.00	900.00	0.00N	0.00E	==>	0.00	40.58940600	-104.70711400
1000.00	0.00	0.00	1000.00	0.00N	0.00E	==>	0.00	40.58940600	-104.70711400
1100.00	0.00	0.00	1100.00	0.00N	0.00E	==>	0.00	40.58940600	-104.70711400
1200.00	0.00	0.00	1200.00	0.00N	0.00E	==>	0.00	40.58940600	-104.70711400
1300.00	0.00	0.00	1300.00	0.00N	0.00E	==>	0.00	40.58940600	-104.70711400
1400.00	0.00	0.00	1400.00	0.00N	0.00E	==>	0.00	40.58940600	-104.70711400
1500.00	0.00	0.00	1500.00	0.00N	0.00E	==>	0.00	40.58940600	-104.70711400
1573.00	0.00	272.30	1573.00	0.00N	0.00E	==>	0.00	40.58940600	-104.70711400
1673.00	2.00	272.30	1672.98	0.07N	1.74W	2.00	1.74	40.58940624	-104.70712028
1773.00	4.00	272.30	1772.84	0.28N	6.97W	2.00	6.97	40.58940694	-104.70713910
1873.00	6.00	272.30	1872.45	0.63N	15.68W	2.00	15.68	40.58940811	-104.70717044
1973.00	8.00	272.30	1971.70	1.12N	27.86W	2.00	27.85	40.58940975	-104.70721426
2073.00	10.00	272.30	2070.47	1.75N	43.49W	2.00	43.48	40.58941186	-104.70727051
2173.00	12.00	272.30	2168.62	2.51N	62.55W	2.00	62.54	40.58941443	-104.70733913
2273.00	14.00	272.30	2266.06	3.41N	85.03W	2.00	85.01	40.58941746	-104.70742002
2373.00	16.00	272.30	2362.64	4.45N	110.89W	2.00	110.87	40.58942094	-104.70751309
2473.00	18.00	272.30	2458.27	5.63N	140.10W	2.00	140.08	40.58942488	-104.70761823
2573.00	20.00	272.30	2552.82	6.93N	172.63W	2.00	172.60	40.58942926	-104.70773530
2673.00	22.00	272.30	2646.17	8.37N	208.43W	2.00	208.40	40.58943409	-104.70786417
2773.00	24.00	272.30	2738.21	9.94N	247.47W	2.00	247.43	40.58943935	-104.70800467
2873.00	26.00	272.30	2828.84	11.63N	289.70W	2.00	289.65	40.58944504	-104.70815665
2899.18	26.52	272.30	2852.32	12.10N	301.27W	2.00	301.22	40.58944659	-104.70819831

All data is in Feet unless otherwise stated
Coordinates are from Slot MD's are from Rig and TVD's are from Rig (Planned Datum #1 4945.0ft above Mean Sea Level)
Vertical Section is from 0.00N 0.00E on azimuth 269.77 degrees
Bottom hole distance is 12647.56 Feet on azimuth 269.77 degrees from Wellhead
Calculation method uses Minimum Curvature method
Prepared by
Date Printed: 28-Sep-2021

SYSDRILL
Well Design Combined Report
Wellbore: Ruby West 7 (PWB)



Interpolated Wellpath									
MD[ft]	Inc[deg]	Azi[deg]	TVD[ft]	North[ft]	East[ft]	Dogleg [deg/100ft]	Vertical Section[ft]	Station Position (Latitude)	Station Position (Longitude)
2973.00	26.52	272.30	2918.37	13.42N	334.21W	==>	334.16	40.58945103	-104.70831685
3073.00	26.52	272.30	3007.84	15.21N	378.83W	==>	378.77	40.58945704	-104.70847745
3173.00	26.52	272.30	3097.32	17.00N	423.46W	==>	423.38	40.58946305	-104.70863804
3273.00	26.52	272.30	3186.79	18.80N	468.08W	==>	468.00	40.58946907	-104.70879863
3373.00	26.52	272.30	3276.27	20.59N	512.70W	==>	512.61	40.58947508	-104.70895922
3473.00	26.52	272.30	3365.74	22.38N	557.32W	==>	557.22	40.58948109	-104.70911982
3573.00	26.52	272.30	3455.22	24.17N	601.94W	==>	601.84	40.58948710	-104.70928041
3673.00	26.52	272.30	3544.69	25.96N	646.56W	==>	646.45	40.58949311	-104.70944100
3773.00	26.52	272.30	3634.17	27.76N	691.18W	==>	691.06	40.58949912	-104.70960160
3873.00	26.52	272.30	3723.64	29.55N	735.80W	==>	735.67	40.58950513	-104.70976219
3973.00	26.52	272.30	3813.12	31.34N	780.42W	==>	780.29	40.58951114	-104.70992278
4073.00	26.52	272.30	3902.59	33.13N	825.04W	==>	824.90	40.58951714	-104.71008337
4173.00	26.52	272.30	3992.07	34.92N	869.66W	==>	869.51	40.58952315	-104.71024397
4273.00	26.52	272.30	4081.54	36.71N	914.28W	==>	914.13	40.58952916	-104.71040456
4373.00	26.52	272.30	4171.02	38.51N	958.90W	==>	958.74	40.58953517	-104.71056515
4473.00	26.52	272.30	4260.49	40.30N	1003.52W	==>	1003.35	40.58954118	-104.71072574
4573.00	26.52	272.30	4349.97	42.09N	1048.14W	==>	1047.97	40.58954719	-104.71088634
4673.00	26.52	272.30	4439.44	43.88N	1092.77W	==>	1092.58	40.58955319	-104.71104693
4773.00	26.52	272.30	4528.92	45.67N	1137.39W	==>	1137.19	40.58955920	-104.71120752
4873.00	26.52	272.30	4618.39	47.47N	1182.01W	==>	1181.81	40.58956521	-104.71136812
4973.00	26.52	272.30	4707.87	49.26N	1226.63W	==>	1226.42	40.58957122	-104.71152871
5073.00	26.52	272.30	4797.34	51.05N	1271.25W	==>	1271.03	40.58957722	-104.71168930
5173.00	26.52	272.30	4886.82	52.84N	1315.87W	==>	1315.64	40.58958323	-104.71184990
5273.00	26.52	272.30	4976.29	54.63N	1360.49W	==>	1360.26	40.58958924	-104.71201049
5373.00	26.52	272.30	5065.77	56.42N	1405.11W	==>	1404.87	40.58959524	-104.71217108
5473.00	26.52	272.30	5155.25	58.22N	1449.73W	==>	1449.48	40.58960125	-104.71233168
5573.00	26.52	272.30	5244.72	60.01N	1494.35W	==>	1494.10	40.58960725	-104.71249227
5673.00	26.52	272.30	5334.20	61.80N	1538.97W	==>	1538.71	40.58961326	-104.71265286
5773.00	26.52	272.30	5423.67	63.59N	1583.59W	==>	1583.32	40.58961926	-104.71281346
5873.00	26.52	272.30	5513.15	65.38N	1628.21W	==>	1627.94	40.58962527	-104.71297405
5973.00	26.52	272.30	5602.62	67.17N	1672.83W	==>	1672.55	40.58963127	-104.71313464
6073.00	26.52	272.30	5692.10	68.97N	1717.46W	==>	1717.16	40.58963728	-104.71329524
6173.00	26.52	272.30	5781.57	70.76N	1762.08W	==>	1761.78	40.58964328	-104.71345583
6273.00	26.52	272.30	5871.05	72.55N	1806.70W	==>	1806.39	40.58964929	-104.71361642
6373.00	26.52	272.30	5960.52	74.34N	1851.32W	==>	1851.00	40.58965529	-104.71377702
6473.00	26.52	272.30	6050.00	76.13N	1895.94W	==>	1895.61	40.58966130	-104.71393761
6573.00	26.52	272.30	6139.47	77.93N	1940.56W	==>	1940.23	40.58966730	-104.71409820
6673.00	26.52	272.30	6228.95	79.72N	1985.18W	==>	1984.84	40.58967330	-104.71425880
6773.00	26.52	272.30	6318.42	81.51N	2029.80W	==>	2029.45	40.58967931	-104.71441939
6873.00	26.52	272.30	6407.90	83.30N	2074.42W	==>	2074.07	40.58968531	-104.71457998
6973.00	26.52	272.30	6497.37	85.09N	2119.04W	==>	2118.68	40.58969131	-104.71474058
7073.00	26.52	272.30	6586.85	86.88N	2163.66W	==>	2163.29	40.58969731	-104.71490117
7173.00	26.52	272.30	6676.32	88.68N	2208.28W	==>	2207.91	40.58970332	-104.71506176
7273.00	26.52	272.30	6765.80	90.47N	2252.90W	==>	2252.52	40.58970932	-104.71522236
7373.00	26.52	272.30	6855.27	92.26N	2297.52W	==>	2297.13	40.58971532	-104.71538295
7473.00	26.52	272.30	6944.75	94.05N	2342.14W	==>	2341.75	40.58972132	-104.71554355
7565.64	26.52	272.30	7027.64	95.71N	2383.48W	==>	2383.07	40.58972688	-104.71569232
7573.00	27.26	272.20	7034.20	95.84N	2386.81W	10.00	2386.40	40.58972732	-104.71570429
7673.00	37.24	271.21	7118.66	97.36N	2440.08W	10.00	2439.67	40.58973279	-104.71589604
7773.00	47.24	270.59	7192.60	98.39N	2507.21W	10.00	2506.79	40.58973723	-104.71613771
7873.00	57.23	270.15	7253.77	98.88N	2586.16W	10.00	2585.74	40.58974049	-104.71642194
7973.00	67.23	269.79	7300.31	98.82N	2674.53W	10.00	2674.11	40.58974247	-104.71674009
8073.00	77.22	269.49	7330.80	98.22N	2769.63W	10.00	2769.21	40.58974313	-104.71708252
8173.00	87.22	269.21	7344.32	97.09N	2868.58W	10.00	2868.16	40.58974243	-104.71743880
8200.84	90.00	269.13	7345.00	96.69N	2896.40W	10.00	2895.99	40.58974200	-104.71753900
8273.00	90.00	269.13	7345.00	95.59N	2968.56W	==>	2968.14	40.58974074	-104.71779880
8373.00	90.00	269.13	7345.00	94.08N	3068.54W	==>	3068.14	40.58973900	-104.71815885
8473.00	90.00	269.13	7345.00	92.56N	3168.53W	==>	3168.13	40.58973726	-104.71851889

All data is in Feet unless otherwise stated
Coordinates are from Slot MD's are from Rig and TVD's are from Rig (Planned Datum #1 4945.0ft above Mean Sea Level)
Vertical Section is from 0.00N 0.00E on azimuth 269.77 degrees
Bottom hole distance is 12647.56 Feet on azimuth 269.77 degrees from Wellhead
Calculation method uses Minimum Curvature method
Prepared by
Date Printed: 28-Sep-2021

SYSDRILL
Well Design Combined Report
Wellbore: Ruby West 7 (PWB)



Interpolated Wellpath									
MD[ft]	Inc[deg]	Azi[deg]	TVD[ft]	North[ft]	East[ft]	Dogleg [deg/100ft]	Vertical Section[ft]	Station Position (Latitude)	Station Position (Longitude)
8573.00	90.00	269.13	7345.00	91.05N	3268.52W	==>	3268.13	40.58973552	-104.71887893
8673.00	90.00	269.13	7345.00	89.53N	3368.51W	==>	3368.12	40.58973377	-104.71923898
8773.00	90.00	269.13	7345.00	88.01N	3468.50W	==>	3468.11	40.58973203	-104.71959902
8873.00	90.00	269.13	7345.00	86.50N	3568.49W	==>	3568.11	40.58973028	-104.71995907
8973.00	90.00	269.13	7345.00	84.98N	3668.47W	==>	3668.10	40.58972853	-104.72031911
9073.00	90.00	269.13	7345.00	83.46N	3768.46W	==>	3768.09	40.58972678	-104.72067915
9173.00	90.00	269.13	7345.00	81.95N	3868.45W	==>	3868.09	40.58972503	-104.72103920
9273.00	90.00	269.13	7345.00	80.43N	3968.44W	==>	3968.08	40.58972328	-104.72139924
9373.00	90.00	269.13	7345.00	78.92N	4068.43W	==>	4068.08	40.58972153	-104.72175928
9473.00	90.00	269.13	7345.00	77.40N	4168.42W	==>	4168.07	40.58971977	-104.72211933
9573.00	90.00	269.13	7345.00	75.88N	4268.41W	==>	4268.06	40.58971802	-104.72247937
9673.00	90.00	269.13	7345.00	74.37N	4368.39W	==>	4368.06	40.58971626	-104.72283941
9773.00	90.00	269.13	7345.00	72.85N	4468.38W	==>	4468.05	40.58971450	-104.72319946
9873.00	90.00	269.13	7345.00	71.33N	4568.37W	==>	4568.05	40.58971275	-104.72355950
9973.00	90.00	269.13	7345.00	69.82N	4668.36W	==>	4668.04	40.58971099	-104.72391954
10073.00	90.00	269.13	7345.00	68.30N	4768.35W	==>	4768.03	40.58970923	-104.72427959
10173.00	90.00	269.13	7345.00	66.79N	4868.34W	==>	4868.03	40.58970747	-104.72463963
10273.00	90.00	269.13	7345.00	65.27N	4968.33W	==>	4968.02	40.58970570	-104.72499967
10373.00	90.00	269.13	7345.00	63.75N	5068.31W	==>	5068.01	40.58970394	-104.72535972
10473.00	90.00	269.13	7345.00	62.24N	5168.30W	==>	5168.01	40.58970217	-104.72571976
10573.00	90.00	269.13	7345.00	60.72N	5268.29W	==>	5268.00	40.58970041	-104.72607980
10673.00	90.00	269.13	7345.00	59.20N	5368.28W	==>	5368.00	40.58969864	-104.72643985
10773.00	90.00	269.13	7345.00	57.69N	5468.27W	==>	5467.99	40.58969687	-104.72679989
10873.00	90.00	269.13	7345.00	56.17N	5568.26W	==>	5567.98	40.58969510	-104.72715993
10973.00	90.00	269.13	7345.00	54.65N	5668.24W	==>	5667.98	40.58969333	-104.72751998
11073.00	90.00	269.13	7345.00	53.14N	5768.23W	==>	5767.97	40.58969156	-104.72788002
11173.00	90.00	269.13	7345.00	51.62N	5868.22W	==>	5867.96	40.58968979	-104.72824006
11273.00	90.00	269.13	7345.00	50.11N	5968.21W	==>	5967.96	40.58968801	-104.72860010
11373.00	90.00	269.13	7345.00	48.59N	6068.20W	==>	6067.95	40.58968624	-104.72896015
11473.00	90.00	269.13	7345.00	47.07N	6168.19W	==>	6167.95	40.58968446	-104.72932019
11573.00	90.00	269.13	7345.00	45.56N	6268.18W	==>	6267.94	40.58968269	-104.72968023
11673.00	90.00	269.13	7345.00	44.04N	6368.16W	==>	6367.93	40.58968091	-104.73004028
11773.00	90.00	269.13	7345.00	42.52N	6468.15W	==>	6467.93	40.58967913	-104.73040032
11873.00	90.00	269.13	7345.00	41.01N	6568.14W	==>	6567.92	40.58967735	-104.73076036
11973.00	90.00	269.13	7345.00	39.49N	6668.13W	==>	6667.92	40.58967557	-104.73112041
12073.00	90.00	269.13	7345.00	37.98N	6768.12W	==>	6767.91	40.58967378	-104.73148045
12173.00	90.00	269.13	7345.00	36.46N	6868.11W	==>	6867.90	40.58967200	-104.73184049
12273.00	90.00	269.13	7345.00	34.94N	6968.10W	==>	6967.90	40.58967022	-104.73220053
12373.00	90.00	269.13	7345.00	33.43N	7068.08W	==>	7067.89	40.58966843	-104.73256058
12473.00	90.00	269.13	7345.00	31.91N	7168.07W	==>	7167.88	40.58966664	-104.73292062
12573.00	90.00	269.13	7345.00	30.39N	7268.06W	==>	7267.88	40.58966485	-104.73328066
12673.00	90.00	269.13	7345.00	28.88N	7368.05W	==>	7367.87	40.58966306	-104.73364071
12773.00	90.00	269.13	7345.00	27.36N	7468.04W	==>	7467.87	40.58966127	-104.73400075
12873.00	90.00	269.13	7345.00	25.84N	7568.03W	==>	7567.86	40.58965948	-104.73436079
12973.00	90.00	269.13	7345.00	24.33N	7668.01W	==>	7667.85	40.58965769	-104.73472083
13073.00	90.00	269.13	7345.00	22.81N	7768.00W	==>	7767.85	40.58965590	-104.73508088
13173.00	90.00	269.13	7345.00	21.30N	7867.99W	==>	7867.84	40.58965410	-104.73544092
13273.00	90.00	269.13	7345.00	19.78N	7967.98W	==>	7967.84	40.58965230	-104.73580096
13373.00	90.00	269.13	7345.00	18.26N	8067.97W	==>	8067.83	40.58965051	-104.73616100
13473.00	90.00	269.13	7345.00	16.75N	8167.96W	==>	8167.82	40.58964871	-104.73652105
13573.00	90.00	269.13	7345.00	15.23N	8267.95W	==>	8267.82	40.58964691	-104.73688109
13673.00	90.00	269.13	7345.00	13.71N	8367.93W	==>	8367.81	40.58964511	-104.73724113
13773.00	90.00	269.13	7345.00	12.20N	8467.92W	==>	8467.80	40.58964331	-104.73760117
13873.00	90.00	269.13	7345.00	10.68N	8567.91W	==>	8567.80	40.58964150	-104.73796122
13973.00	90.00	269.13	7345.00	9.17N	8667.90W	==>	8667.79	40.58963970	-104.73832126
14073.00	90.00	269.13	7345.00	7.65N	8767.89W	==>	8767.79	40.58963790	-104.73868130
14173.00	90.00	269.13	7345.00	6.13N	8867.88W	==>	8867.78	40.58963609	-104.73904134
14273.00	90.00	269.13	7345.00	4.62N	8967.87W	==>	8967.77	40.58963428	-104.73940139
14373.00	90.00	269.13	7345.00	3.10N	9067.85W	==>	9067.77	40.58963247	-104.73976143

All data is in Feet unless otherwise stated
Coordinates are from Slot MD's are from Rig and TVD's are from Rig (Planned Datum #1 4945.0ft above Mean Sea Level)
Vertical Section is from 0.00N 0.00E on azimuth 269.77 degrees
Bottom hole distance is 12647.56 Feet on azimuth 269.77 degrees from Wellhead
Calculation method uses Minimum Curvature method
Prepared by
Date Printed: 28-Sep-2021

SYSDRILL
Well Design Combined Report
Wellbore: Ruby West 7 (PWB)



Interpolated Wellpath									
MD[ft]	Inc[deg]	Azi[deg]	TVD[ft]	North[ft]	East[ft]	Dogleg [deg/100ft]	Vertical Section[ft]	Station Position (Latitude)	Station Position (Longitude)
14473.00	90.00	269.13	7345.00	1.58N	9167.84W	==>	9167.76	40.58963066	-104.74012147
14573.00	90.00	269.13	7345.00	0.07N	9267.83W	==>	9267.75	40.58962885	-104.74048151
14673.00	90.00	269.13	7345.00	1.45S	9367.82W	==>	9367.75	40.58962704	-104.74084156
14773.00	90.00	269.13	7345.00	2.97S	9467.81W	==>	9467.74	40.58962523	-104.74120160
14873.00	90.00	269.13	7345.00	4.48S	9567.80W	==>	9567.74	40.58962342	-104.74156164
14973.00	90.00	269.13	7345.00	6.00S	9667.79W	==>	9667.73	40.58962160	-104.74192168
15073.00	90.00	269.13	7345.00	7.51S	9767.77W	==>	9767.72	40.58961978	-104.74228173
15173.00	90.00	269.13	7345.00	9.03S	9867.76W	==>	9867.72	40.58961797	-104.74264177
15273.00	90.00	269.13	7345.00	10.55S	9967.75W	==>	9967.71	40.58961615	-104.74300181
15373.00	90.00	269.13	7345.00	12.06S	10067.74W	==>	10067.71	40.58961433	-104.74336185
15473.00	90.00	269.13	7345.00	13.58S	10167.73W	==>	10167.70	40.58961251	-104.74372190
15573.00	90.00	269.13	7345.00	15.10S	10267.72W	==>	10267.69	40.58961069	-104.74408194
15673.00	90.00	269.13	7345.00	16.61S	10367.70W	==>	10367.69	40.58960886	-104.74444198
15773.00	90.00	269.13	7345.00	18.13S	10467.69W	==>	10467.68	40.58960704	-104.74480202
15873.00	90.00	269.13	7345.00	19.64S	10567.68W	==>	10567.67	40.58960521	-104.74516206
15973.00	90.00	269.13	7345.00	21.16S	10667.67W	==>	10667.67	40.58960339	-104.74552211
16073.00	90.00	269.13	7345.00	22.68S	10767.66W	==>	10767.66	40.58960156	-104.74588215
16173.00	90.00	269.13	7345.00	24.19S	10867.65W	==>	10867.66	40.58959973	-104.74624219
16273.00	90.00	269.13	7345.00	25.71S	10967.64W	==>	10967.65	40.58959790	-104.74660223
16373.00	90.00	269.13	7345.00	27.23S	11067.62W	==>	11067.64	40.58959607	-104.74696228
16473.00	90.00	269.13	7345.00	28.74S	11167.61W	==>	11167.64	40.58959424	-104.74732232
16573.00	90.00	269.13	7345.00	30.26S	11267.60W	==>	11267.63	40.58959241	-104.74768236
16673.00	90.00	269.13	7345.00	31.78S	11367.59W	==>	11367.63	40.58959057	-104.74804240
16773.00	90.00	269.13	7345.00	33.29S	11467.58W	==>	11467.62	40.58958874	-104.74840244
16873.00	90.00	269.13	7345.00	34.81S	11567.57W	==>	11567.61	40.58958690	-104.74876249
16973.00	90.00	269.13	7345.00	36.32S	11667.56W	==>	11667.61	40.58958507	-104.74912253
17073.00	90.00	269.13	7345.00	37.84S	11767.54W	==>	11767.60	40.58958323	-104.74948257
17173.00	90.00	269.13	7345.00	39.36S	11867.53W	==>	11867.59	40.58958139	-104.74984261
17273.00	90.00	269.13	7345.00	40.87S	11967.52W	==>	11967.59	40.58957955	-104.75020265
17373.00	90.00	269.13	7345.00	42.39S	12067.51W	==>	12067.58	40.58957770	-104.75056270
17473.00	90.00	269.13	7345.00	43.91S	12167.50W	==>	12167.58	40.58957586	-104.75092274
17573.00	90.00	269.13	7345.00	45.42S	12267.49W	==>	12267.57	40.58957402	-104.75128278
17673.00	90.00	269.13	7345.00	46.94S	12367.47W	==>	12367.56	40.58957217	-104.75164282
17773.00	90.00	269.13	7345.00	48.45S	12467.46W	==>	12467.56	40.58957033	-104.75200286
17873.00	90.00	269.13	7345.00	49.97S	12567.45W	==>	12567.55	40.58956848	-104.75236290
17953.02	90.00	269.13	7345.00	51.18S	12647.46W	==>	12647.56	40.58956700	-104.75265100

All data is in Feet unless otherwise stated
Coordinates are from Slot MD's are from Rig and TVD's are from Rig (Planned Datum #1 4945.0ft above Mean Sea Level)
Vertical Section is from 0.00N 0.00E on azimuth 269.77 degrees
Bottom hole distance is 12647.56 Feet on azimuth 269.77 degrees from Wellhead
Calculation method uses Minimum Curvature method
Prepared by
Date Printed: 28-Sep-2021



Targets							
Name	North[ft]	East[ft]	TVD[ft]	Latitude	Longitude	Northing	Easting
Ruby West 7 - LP	96.69N	2896.40W	7345.00	40.58974200	-104.71753900	1458643.15	3217310.73
Ruby West 7 - BHL	51.18S	12647.46W	7345.00	40.58956700	-104.75265100	1458495.28	3207559.94

Survey Tool Program						
Reference	Survey Name	MD[ft]	TVD[ft]	Survey Tool	Error Model	
1026521	Planned	1573.00	1573.00	WdW Rate Gyro	Standard	
1026520	Planned	17953.02	7345.00	ISWWSA MWD	Rev 4 + SAG + FLT	

Notes