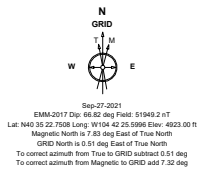


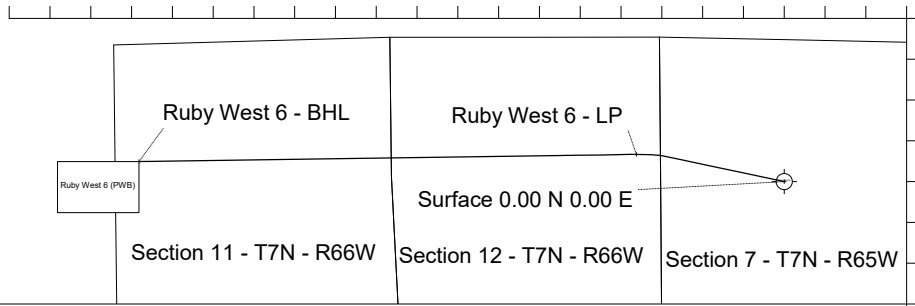
BAYSWATER E&P, LLC

Location	Weld County, CO	Slot	Ruby West 6
Field	WATTENBERG	Well	Ruby West 6
Installation	Ruby 7-J Pad	Wellbore	Ruby West 6 (PWB)

Created by sean.dolfinger
 Date plotted 28-Sep-2021
 Plot reference is Ruby West 6 (PWB).
 Ref wellpath is Ruby West 6 (PWP#1).
 Coordinates are in Feet reference Ruby West 6.
 True Vertical Depths are reference Rig Datum.
 Measured Depths are reference Rig Datum.
 Rig Datum: Planned Datum #1
 Rig Datum to Mean Sea Level: 4945.00 ft.
 Plot North is aligned to GRID North.



Scale 1 cm = 800 ft
East (Feet) ->
 -14400 -12800 -11200 -9600 -8000 -6400 -4800 -3200 -1600 0 1600

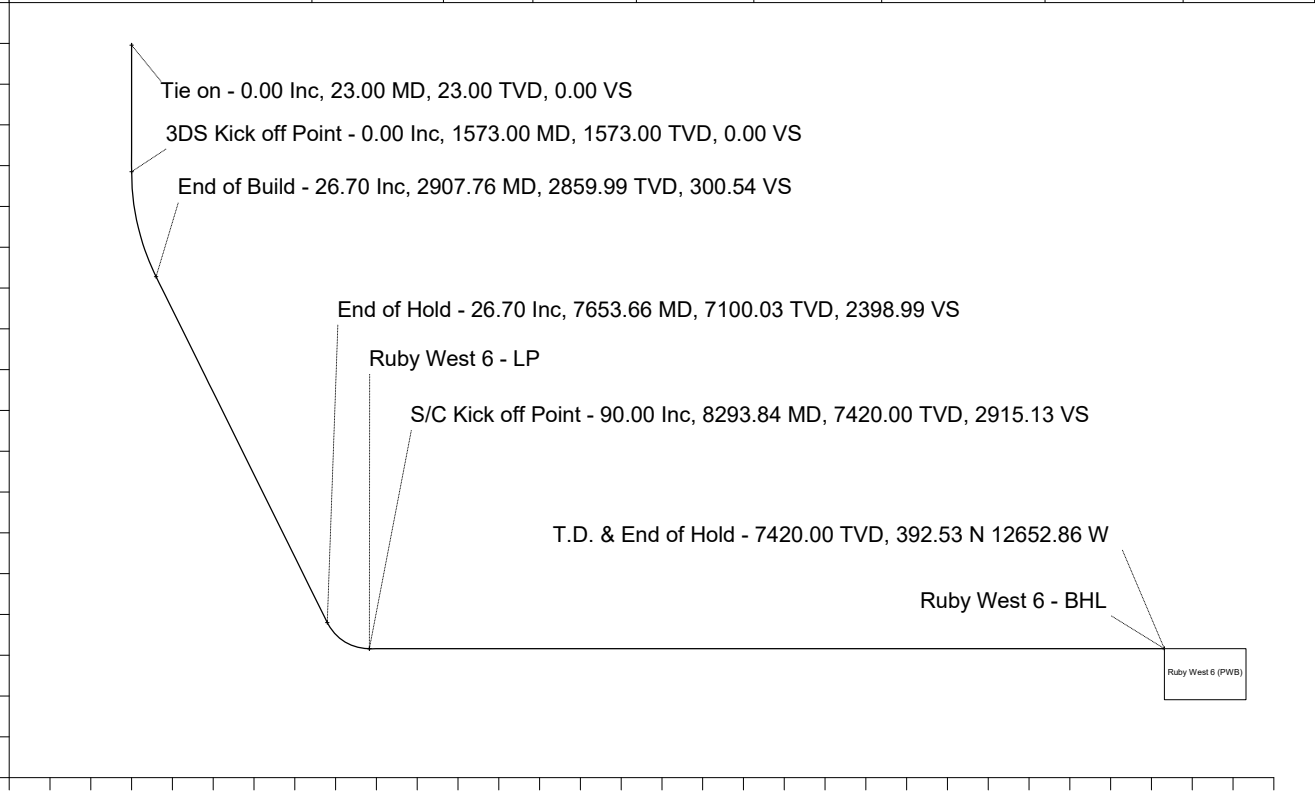


<- North(Feet)
 3200
 1600
 0
 -1600
 Scale 1 cm = 800 ft

WELL PROFILE DATA

Point	MD	Inc	Azi	TVD	North	East	deg/100ft	V. Sect
Tie on	23.00	0.00	0.00	23.00	S 0.00	W 0.00		0.00
KOP	1573.00	0.00	281.97	1573.00	S 0.00	W 0.00	0.00	0.00
End of Build	2907.76	26.70	281.97	2859.99	N 63.31	W 298.72	2.00	300.54
End of Hold	7653.66	26.70	281.97	7100.03	N 505.32	W 2384.47	0.00	2398.99
Target Ruby W...6 - LP	8293.84	90.00	269.17	7420.00	N 533.50	W 2899.98	10.00	2915.13
T.D. & Target Rub...BHL	18047.74	90.00	269.17	7420.00	N 392.53	W 12652.86	0.00	12658.95

<- True Vertical Depth (Feet)
 Scale 1 cm = 500 ft



Scale 1 cm = 500 ft
Vertical Section (Feet) ->
 -1000 0 1000 2000 3000 4000 5000 6000 7000 8000 9000 10000 11000 12000 13000 14000
 Azimuth 271.78 with reference 0.00 N, 0.00 E from Ruby West 6



Wellhead Details							
Name	Latitude	Longitude	Northing	Easting	North	East	Slot Elevation Above Ground
Ruby West 6	40.58944700	-104.70711400	1458561.3957	3220206.9170	75.06S	0.16W	0.00

Declination		
Date	Source	Time
Sep-27-2021	EMM-2017	13:43

Installation Details						
Name	Installation Position (Latitude)	Installation Position (Longitude)	Northing	Easting	Coord System Name	North Alignment
Ruby 7-J Pad	40.58965300	-104.70711100	1458636.4488	3220207.0791	NAD83 Colorado State Planes, North Zone, US Foot	Grid

Summary Wellpath								
MD[ft]	Inc[deg]	Azi[deg]	TVD[ft]	Vertical Depth SS	North[ft]	East[ft]	Dogleg [deg/100ft]	Vertical Section[ft]
23.00	0.00	0.00	23.00	-4922.00	0.00N	0.00E		0.00
1573.00	0.00	281.97	1573.00	-3372.00	0.00N	0.00E	==>	0.00
2907.76	26.70	281.97	2859.99	-2085.01	63.31N	298.72W	2.00	300.54
7653.66	26.70	281.97	7100.03	2155.03	505.32N	2384.47W	==>	2398.99
8293.84	90.00	269.17	7420.00	2475.00	533.50N	2899.98W	10.00	2915.13
18047.74	90.00	269.17	7420.00	2475.00	392.53N	12652.86W	==>	12658.95

Interpolated Wellpath									
MD[ft]	Inc[deg]	Azi[deg]	TVD[ft]	North[ft]	East[ft]	Dogleg [deg/100ft]	Vertical Section[ft]	Station Position (Latitude)	Station Position (Longitude)
0.00	0.00	0.00	0.00	0.00N	0.00E		0.00	40.58944700	-104.70711400
23.00	0.00	0.00	23.00	0.00N	0.00E	==>	0.00	40.58944700	-104.70711400
100.00	0.00	0.00	100.00	0.00N	0.00E	==>	0.00	40.58944700	-104.70711400
200.00	0.00	0.00	200.00	0.00N	0.00E	==>	0.00	40.58944700	-104.70711400
300.00	0.00	0.00	300.00	0.00N	0.00E	==>	0.00	40.58944700	-104.70711400
400.00	0.00	0.00	400.00	0.00N	0.00E	==>	0.00	40.58944700	-104.70711400
500.00	0.00	0.00	500.00	0.00N	0.00E	==>	0.00	40.58944700	-104.70711400
600.00	0.00	0.00	600.00	0.00N	0.00E	==>	0.00	40.58944700	-104.70711400
700.00	0.00	0.00	700.00	0.00N	0.00E	==>	0.00	40.58944700	-104.70711400
800.00	0.00	0.00	800.00	0.00N	0.00E	==>	0.00	40.58944700	-104.70711400
900.00	0.00	0.00	900.00	0.00N	0.00E	==>	0.00	40.58944700	-104.70711400
1000.00	0.00	0.00	1000.00	0.00N	0.00E	==>	0.00	40.58944700	-104.70711400
1100.00	0.00	0.00	1100.00	0.00N	0.00E	==>	0.00	40.58944700	-104.70711400
1200.00	0.00	0.00	1200.00	0.00N	0.00E	==>	0.00	40.58944700	-104.70711400
1300.00	0.00	0.00	1300.00	0.00N	0.00E	==>	0.00	40.58944700	-104.70711400
1400.00	0.00	0.00	1400.00	0.00N	0.00E	==>	0.00	40.58944700	-104.70711400
1500.00	0.00	0.00	1500.00	0.00N	0.00E	==>	0.00	40.58944700	-104.70711400
1573.00	0.00	281.97	1573.00	0.00N	0.00E	==>	0.00	40.58944700	-104.70711400
1673.00	2.00	281.97	1672.98	0.36N	1.71W	2.00	1.72	40.58944803	-104.70712014
1773.00	4.00	281.97	1772.84	1.45N	6.83W	2.00	6.87	40.58945114	-104.70713853
1873.00	6.00	281.97	1872.45	3.25N	15.35W	2.00	15.45	40.58945631	-104.70716917
1973.00	8.00	281.97	1971.70	5.78N	27.27W	2.00	27.44	40.58946353	-104.70721201
2073.00	10.00	281.97	2070.47	9.02N	42.58W	2.00	42.84	40.58947281	-104.70726700
2173.00	12.00	281.97	2168.62	12.98N	61.24W	2.00	61.62	40.58948413	-104.70733408
2273.00	14.00	281.97	2266.06	17.64N	83.25W	2.00	83.75	40.58949746	-104.70741315
2373.00	16.00	281.97	2362.64	23.01N	108.57W	2.00	109.23	40.58951281	-104.70750414
2473.00	18.00	281.97	2458.27	29.07N	137.17W	2.00	138.00	40.58953015	-104.70760691
2573.00	20.00	281.97	2552.82	35.82N	169.01W	2.00	170.04	40.58954946	-104.70772136
2673.00	22.00	281.97	2646.17	43.25N	204.07W	2.00	205.31	40.58957071	-104.70784734
2773.00	24.00	281.97	2738.21	51.35N	242.29W	2.00	243.77	40.58959388	-104.70798469
2873.00	26.00	281.97	2828.84	60.11N	283.63W	2.00	285.36	40.58961894	-104.70813325
2907.76	26.70	281.97	2859.99	63.31N	298.72W	2.00	300.54	40.58962808	-104.70818748

All data is in Feet unless otherwise stated
Coordinates are from Slot MD's are from Rig and TVD's are from Rig (Planned Datum #1 4945.0ft above Mean Sea Level)
Vertical Section is from 0.00N 0.00E on azimuth 271.78 degrees
Bottom hole distance is 12658.95 Feet on azimuth 271.78 degrees from Wellhead
Calculation method uses Minimum Curvature method
Prepared by
Date Printed: 28-Sep-2021



Interpolated Wellpath									
MD[ft]	Inc[deg]	Azi[deg]	TVD[ft]	North[ft]	East[ft]	Dogleg [deg/100ft]	Vertical Section[ft]	Station Position (Latitude)	Station Position (Longitude)
2973.00	26.70	281.97	2918.28	69.38N	327.40W	==>	329.39	40.58964546	-104.70829052
3073.00	26.70	281.97	3007.62	78.70N	371.35W	==>	373.61	40.58967210	-104.70844845
3173.00	26.70	281.97	3096.96	88.01N	415.29W	==>	417.82	40.58969874	-104.70860638
3273.00	26.70	281.97	3186.30	97.32N	459.24W	==>	462.04	40.58972538	-104.70876431
3373.00	26.70	281.97	3275.64	106.64N	503.19W	==>	506.26	40.58975202	-104.70892224
3473.00	26.70	281.97	3364.98	115.95N	547.14W	==>	550.47	40.58977866	-104.70908017
3573.00	26.70	281.97	3454.32	125.26N	591.09W	==>	594.69	40.58980530	-104.70923810
3673.00	26.70	281.97	3543.66	134.58N	635.04W	==>	638.90	40.58983194	-104.70939603
3773.00	26.70	281.97	3633.00	143.89N	678.98W	==>	683.12	40.58985858	-104.70955396
3873.00	26.70	281.97	3722.34	153.20N	722.93W	==>	727.34	40.58988521	-104.70971189
3973.00	26.70	281.97	3811.69	162.52N	766.88W	==>	771.55	40.58991185	-104.70986983
4073.00	26.70	281.97	3901.03	171.83N	810.83W	==>	815.77	40.58993849	-104.71002776
4173.00	26.70	281.97	3990.37	181.15N	854.78W	==>	859.98	40.58996513	-104.71018569
4273.00	26.70	281.97	4079.71	190.46N	898.73W	==>	904.20	40.58999176	-104.71034362
4373.00	26.70	281.97	4169.05	199.77N	942.67W	==>	948.42	40.59001840	-104.71050155
4473.00	26.70	281.97	4258.39	209.09N	986.62W	==>	992.63	40.59004504	-104.71065948
4573.00	26.70	281.97	4347.73	218.40N	1030.57W	==>	1036.85	40.59007167	-104.71081742
4673.00	26.70	281.97	4437.07	227.71N	1074.52W	==>	1081.06	40.59009831	-104.71097535
4773.00	26.70	281.97	4526.41	237.03N	1118.47W	==>	1125.28	40.59012495	-104.71113328
4873.00	26.70	281.97	4615.75	246.34N	1162.42W	==>	1169.49	40.59015158	-104.71129121
4973.00	26.70	281.97	4705.10	255.65N	1206.36W	==>	1213.71	40.59017822	-104.71144915
5073.00	26.70	281.97	4794.44	264.97N	1250.31W	==>	1257.93	40.59020485	-104.71160708
5173.00	26.70	281.97	4883.78	274.28N	1294.26W	==>	1302.14	40.59023149	-104.71176501
5273.00	26.70	281.97	4973.12	283.59N	1338.21W	==>	1346.36	40.59025812	-104.71192294
5373.00	26.70	281.97	5062.46	292.91N	1382.16W	==>	1390.57	40.59028476	-104.71208088
5473.00	26.70	281.97	5151.80	302.22N	1426.10W	==>	1434.79	40.59031139	-104.71223881
5573.00	26.70	281.97	5241.14	311.54N	1470.05W	==>	1479.01	40.59033803	-104.71239674
5673.00	26.70	281.97	5330.48	320.85N	1514.00W	==>	1523.22	40.59036466	-104.71255468
5773.00	26.70	281.97	5419.82	330.16N	1557.95W	==>	1567.44	40.59039130	-104.71271261
5873.00	26.70	281.97	5509.16	339.48N	1601.90W	==>	1611.65	40.59041793	-104.71287054
5973.00	26.70	281.97	5598.50	348.79N	1645.85W	==>	1655.87	40.59044456	-104.71302848
6073.00	26.70	281.97	5687.85	358.10N	1689.79W	==>	1700.09	40.59047120	-104.71318641
6173.00	26.70	281.97	5777.19	367.42N	1733.74W	==>	1744.30	40.59049783	-104.71334435
6273.00	26.70	281.97	5866.53	376.73N	1777.69W	==>	1788.52	40.59052446	-104.71350228
6373.00	26.70	281.97	5955.87	386.04N	1821.64W	==>	1832.73	40.59055110	-104.71366022
6473.00	26.70	281.97	6045.21	395.36N	1865.59W	==>	1876.95	40.59057773	-104.71381815
6573.00	26.70	281.97	6134.55	404.67N	1909.54W	==>	1921.17	40.59060436	-104.71397608
6673.00	26.70	281.97	6223.89	413.98N	1953.48W	==>	1965.38	40.59063099	-104.71413402
6773.00	26.70	281.97	6313.23	423.30N	1997.43W	==>	2009.60	40.59065763	-104.71429195
6873.00	26.70	281.97	6402.57	432.61N	2041.38W	==>	2053.81	40.59068426	-104.71444989
6973.00	26.70	281.97	6491.91	441.92N	2085.33W	==>	2098.03	40.59071089	-104.71460782
7073.00	26.70	281.97	6581.26	451.24N	2129.28W	==>	2142.25	40.59073752	-104.71476576
7173.00	26.70	281.97	6670.60	460.55N	2173.23W	==>	2186.46	40.59076415	-104.71492369
7273.00	26.70	281.97	6759.94	469.87N	2217.17W	==>	2230.68	40.59079078	-104.71508163
7373.00	26.70	281.97	6849.28	479.18N	2261.12W	==>	2274.89	40.59081741	-104.71523957
7473.00	26.70	281.97	6938.62	488.49N	2305.07W	==>	2319.11	40.59084404	-104.71539750
7573.00	26.70	281.97	7027.96	497.81N	2349.02W	==>	2363.32	40.59087067	-104.71555544
7653.66	26.70	281.97	7100.03	505.32N	2384.47W	==>	2398.99	40.59089215	-104.71568284
7673.00	28.57	280.97	7117.16	507.10N	2393.26W	10.00	2407.83	40.59089725	-104.71571442
7773.00	38.37	277.26	7200.48	515.59N	2447.66W	10.00	2462.47	40.59092188	-104.71591001
7873.00	48.23	274.88	7273.18	522.70N	2515.77W	10.00	2530.77	40.59094305	-104.71615503
7973.00	58.14	273.14	7333.03	528.21N	2595.53W	10.00	2610.67	40.59096012	-104.71644203
8073.00	68.06	271.74	7378.22	531.96N	2684.52W	10.00	2699.72	40.59097256	-104.71676230
8173.00	77.99	270.53	7407.38	533.83N	2780.02W	10.00	2795.24	40.59098000	-104.71710609
8273.00	87.93	269.40	7419.62	533.76N	2879.14W	10.00	2894.31	40.59098221	-104.71746297
8293.84	90.00	269.17	7420.00	533.50N	2899.98W	10.00	2915.13	40.59098200	-104.71753800
8373.00	90.00	269.17	7420.00	532.36N	2979.13W	==>	2994.20	40.59098078	-104.71782300
8473.00	90.00	269.17	7420.00	530.91N	3079.12W	==>	3094.10	40.59097923	-104.71818306

All data is in Feet unless otherwise stated
Coordinates are from Slot MD's are from Rig and TVD's are from Rig (Planned Datum #1 4945.0ft above Mean Sea Level)
Vertical Section is from 0.00N 0.00E on azimuth 271.78 degrees
Bottom hole distance is 12658.95 Feet on azimuth 271.78 degrees from Wellhead
Calculation method uses Minimum Curvature method
Prepared by
Date Printed: 28-Sep-2021

SYS DRILL
Well Design Combined Report
Wellbore: Ruby West 6 (PWB)



Interpolated Wellpath									
MD[ft]	Inc[deg]	Azi[deg]	TVD[ft]	North[ft]	East[ft]	Dogleg [deg/100ft]	Vertical Section[ft]	Station Position (Latitude)	Station Position (Longitude)
8573.00	90.00	269.17	7420.00	529.46N	3179.11W	==>	3194.00	40.59097768	-104.71854311
8673.00	90.00	269.17	7420.00	528.02N	3279.10W	==>	3293.89	40.59097613	-104.71890316
8773.00	90.00	269.17	7420.00	526.57N	3379.09W	==>	3393.79	40.59097458	-104.71926321
8873.00	90.00	269.17	7420.00	525.13N	3479.08W	==>	3493.69	40.59097303	-104.71962326
8973.00	90.00	269.17	7420.00	523.68N	3579.06W	==>	3593.58	40.59097148	-104.71998331
9073.00	90.00	269.17	7420.00	522.24N	3679.05W	==>	3693.48	40.59096993	-104.72034337
9173.00	90.00	269.17	7420.00	520.79N	3779.04W	==>	3793.38	40.59096837	-104.72070342
9273.00	90.00	269.17	7420.00	519.35N	3879.03W	==>	3893.27	40.59096682	-104.72106347
9373.00	90.00	269.17	7420.00	517.90N	3979.02W	==>	3993.17	40.59096526	-104.72142352
9473.00	90.00	269.17	7420.00	516.46N	4079.01W	==>	4093.07	40.59096370	-104.72178357
9573.00	90.00	269.17	7420.00	515.01N	4179.00W	==>	4192.96	40.59096215	-104.72214362
9673.00	90.00	269.17	7420.00	513.57N	4278.99W	==>	4292.86	40.59096059	-104.72250367
9773.00	90.00	269.17	7420.00	512.12N	4378.98W	==>	4392.76	40.59095903	-104.72286373
9873.00	90.00	269.17	7420.00	510.68N	4478.97W	==>	4492.65	40.59095746	-104.72322378
9973.00	90.00	269.17	7420.00	509.23N	4578.96W	==>	4592.55	40.59095590	-104.72358383
10073.00	90.00	269.17	7420.00	507.79N	4678.95W	==>	4692.45	40.59095434	-104.72394388
10173.00	90.00	269.17	7420.00	506.34N	4778.94W	==>	4792.34	40.59095277	-104.72430393
10273.00	90.00	269.17	7420.00	504.90N	4878.93W	==>	4892.24	40.59095120	-104.72466398
10373.00	90.00	269.17	7420.00	503.45N	4978.92W	==>	4992.14	40.59094964	-104.72502404
10473.00	90.00	269.17	7420.00	502.01N	5078.91W	==>	5092.03	40.59094807	-104.72538409
10573.00	90.00	269.17	7420.00	500.56N	5178.90W	==>	5191.93	40.59094650	-104.72574414
10673.00	90.00	269.17	7420.00	499.11N	5278.89W	==>	5291.83	40.59094493	-104.72610419
10773.00	90.00	269.17	7420.00	497.67N	5378.88W	==>	5391.72	40.59094335	-104.72646424
10873.00	90.00	269.17	7420.00	496.22N	5478.87W	==>	5491.62	40.59094178	-104.72682429
10973.00	90.00	269.17	7420.00	494.78N	5578.86W	==>	5591.52	40.59094021	-104.72718434
11073.00	90.00	269.17	7420.00	493.33N	5678.85W	==>	5691.41	40.59093863	-104.72754439
11173.00	90.00	269.17	7420.00	491.89N	5778.84W	==>	5791.31	40.59093705	-104.72790445
11273.00	90.00	269.17	7420.00	490.44N	5878.82W	==>	5891.21	40.59093548	-104.72826450
11373.00	90.00	269.17	7420.00	489.00N	5978.81W	==>	5991.10	40.59093390	-104.72862455
11473.00	90.00	269.17	7420.00	487.55N	6078.80W	==>	6091.00	40.59093232	-104.72898460
11573.00	90.00	269.17	7420.00	486.11N	6178.79W	==>	6190.90	40.59093074	-104.72934465
11673.00	90.00	269.17	7420.00	484.66N	6278.78W	==>	6290.79	40.59092916	-104.72970470
11773.00	90.00	269.17	7420.00	483.22N	6378.77W	==>	6390.69	40.59092757	-104.73006475
11873.00	90.00	269.17	7420.00	481.77N	6478.76W	==>	6490.59	40.59092599	-104.73042480
11973.00	90.00	269.17	7420.00	480.33N	6578.75W	==>	6590.48	40.59092440	-104.73078486
12073.00	90.00	269.17	7420.00	478.88N	6678.74W	==>	6690.38	40.59092282	-104.73114491
12173.00	90.00	269.17	7420.00	477.44N	6778.73W	==>	6790.28	40.59092123	-104.73150496
12273.00	90.00	269.17	7420.00	475.99N	6878.72W	==>	6890.17	40.59091964	-104.73186501
12373.00	90.00	269.17	7420.00	474.55N	6978.71W	==>	6990.07	40.59091805	-104.73222506
12473.00	90.00	269.17	7420.00	473.10N	7078.70W	==>	7089.97	40.59091646	-104.73258511
12573.00	90.00	269.17	7420.00	471.66N	7178.69W	==>	7189.86	40.59091487	-104.73294516
12673.00	90.00	269.17	7420.00	470.21N	7278.68W	==>	7289.76	40.59091327	-104.73330521
12773.00	90.00	269.17	7420.00	468.77N	7378.67W	==>	7389.66	40.59091168	-104.73366526
12873.00	90.00	269.17	7420.00	467.32N	7478.66W	==>	7489.55	40.59091008	-104.73402532
12973.00	90.00	269.17	7420.00	465.87N	7578.65W	==>	7589.45	40.59090849	-104.73438537
13073.00	90.00	269.17	7420.00	464.43N	7678.64W	==>	7689.35	40.59090689	-104.73474542
13173.00	90.00	269.17	7420.00	462.98N	7778.63W	==>	7789.24	40.59090529	-104.73510547
13273.00	90.00	269.17	7420.00	461.54N	7878.62W	==>	7889.14	40.59090369	-104.73546552
13373.00	90.00	269.17	7420.00	460.09N	7978.61W	==>	7989.04	40.59090209	-104.73582557
13473.00	90.00	269.17	7420.00	458.65N	8078.59W	==>	8088.93	40.59090049	-104.73618562
13573.00	90.00	269.17	7420.00	457.20N	8178.58W	==>	8188.83	40.59089888	-104.73654567
13673.00	90.00	269.17	7420.00	455.76N	8278.57W	==>	8288.73	40.59089728	-104.73690572
13773.00	90.00	269.17	7420.00	454.31N	8378.56W	==>	8388.62	40.59089567	-104.73726577
13873.00	90.00	269.17	7420.00	452.87N	8478.55W	==>	8488.52	40.59089407	-104.73762582
13973.00	90.00	269.17	7420.00	451.42N	8578.54W	==>	8588.42	40.59089246	-104.73798588
14073.00	90.00	269.17	7420.00	449.98N	8678.53W	==>	8688.31	40.59089085	-104.73834593
14173.00	90.00	269.17	7420.00	448.53N	8778.52W	==>	8788.21	40.59088924	-104.73870598
14273.00	90.00	269.17	7420.00	447.09N	8878.51W	==>	8888.11	40.59088763	-104.73906603
14373.00	90.00	269.17	7420.00	445.64N	8978.50W	==>	8988.00	40.59088602	-104.73942608

All data is in Feet unless otherwise stated
Coordinates are from Slot MD's are from Rig and TVD's are from Rig (Planned Datum #1 4945.0ft above Mean Sea Level)
Vertical Section is from 0.00N 0.00E on azimuth 271.78 degrees
Bottom hole distance is 12658.95 Feet on azimuth 271.78 degrees from Wellhead
Calculation method uses Minimum Curvature method
Prepared by
Date Printed: 28-Sep-2021

SYS DRILL
Well Design Combined Report
Wellbore: Ruby West 6 (PWB)



Interpolated Wellpath									
MD[ft]	Inc[deg]	Azi[deg]	TVD[ft]	North[ft]	East[ft]	Dogleg [deg/100ft]	Vertical Section[ft]	Station Position (Latitude)	Station Position (Longitude)
14473.00	90.00	269.17	7420.00	444.20N	9078.49W	==>	9087.90	40.59088440	-104.73978613
14573.00	90.00	269.17	7420.00	442.75N	9178.48W	==>	9187.80	40.59088279	-104.74014618
14673.00	90.00	269.17	7420.00	441.31N	9278.47W	==>	9287.69	40.59088117	-104.74050623
14773.00	90.00	269.17	7420.00	439.86N	9378.46W	==>	9387.59	40.59087956	-104.74086628
14873.00	90.00	269.17	7420.00	438.42N	9478.45W	==>	9487.49	40.59087794	-104.74122633
14973.00	90.00	269.17	7420.00	436.97N	9578.44W	==>	9587.38	40.59087632	-104.74158638
15073.00	90.00	269.17	7420.00	435.52N	9678.43W	==>	9687.28	40.59087470	-104.74194643
15173.00	90.00	269.17	7420.00	434.08N	9778.42W	==>	9787.18	40.59087308	-104.74230648
15273.00	90.00	269.17	7420.00	432.63N	9878.41W	==>	9887.07	40.59087146	-104.74266653
15373.00	90.00	269.17	7420.00	431.19N	9978.40W	==>	9986.97	40.59086983	-104.74302659
15473.00	90.00	269.17	7420.00	429.74N	10078.39W	==>	10086.87	40.59086821	-104.74338664
15573.00	90.00	269.17	7420.00	428.30N	10178.38W	==>	10186.76	40.59086658	-104.74374669
15673.00	90.00	269.17	7420.00	426.85N	10278.37W	==>	10286.66	40.59086496	-104.74410674
15773.00	90.00	269.17	7420.00	425.41N	10378.35W	==>	10386.56	40.59086333	-104.74446679
15873.00	90.00	269.17	7420.00	423.96N	10478.34W	==>	10486.45	40.59086170	-104.74482684
15973.00	90.00	269.17	7420.00	422.52N	10578.33W	==>	10586.35	40.59086007	-104.74518689
16073.00	90.00	269.17	7420.00	421.07N	10678.32W	==>	10686.25	40.59085844	-104.74554694
16173.00	90.00	269.17	7420.00	419.63N	10778.31W	==>	10786.14	40.59085681	-104.74590699
16273.00	90.00	269.17	7420.00	418.18N	10878.30W	==>	10886.04	40.59085517	-104.74626704
16373.00	90.00	269.17	7420.00	416.74N	10978.29W	==>	10985.94	40.59085354	-104.74662709
16473.00	90.00	269.17	7420.00	415.29N	11078.28W	==>	11085.83	40.59085190	-104.74698714
16573.00	90.00	269.17	7420.00	413.85N	11178.27W	==>	11185.73	40.59085027	-104.74734719
16673.00	90.00	269.17	7420.00	412.40N	11278.26W	==>	11285.63	40.59084863	-104.74770724
16773.00	90.00	269.17	7420.00	410.96N	11378.25W	==>	11385.52	40.59084699	-104.74806729
16873.00	90.00	269.17	7420.00	409.51N	11478.24W	==>	11485.42	40.59084535	-104.74842734
16973.00	90.00	269.17	7420.00	408.07N	11578.23W	==>	11585.32	40.59084371	-104.74878739
17073.00	90.00	269.17	7420.00	406.62N	11678.22W	==>	11685.21	40.59084207	-104.74914744
17173.00	90.00	269.17	7420.00	405.17N	11778.21W	==>	11785.11	40.59084042	-104.74950749
17273.00	90.00	269.17	7420.00	403.73N	11878.20W	==>	11885.00	40.59083878	-104.74986754
17373.00	90.00	269.17	7420.00	402.28N	11978.19W	==>	11984.90	40.59083713	-104.75022759
17473.00	90.00	269.17	7420.00	400.84N	12078.18W	==>	12084.80	40.59083549	-104.75058764
17573.00	90.00	269.17	7420.00	399.39N	12178.17W	==>	12184.69	40.59083384	-104.75094769
17673.00	90.00	269.17	7420.00	397.95N	12278.16W	==>	12284.59	40.59083219	-104.75130774
17773.00	90.00	269.17	7420.00	396.50N	12378.15W	==>	12384.49	40.59083054	-104.75166779
17873.00	90.00	269.17	7420.00	395.06N	12478.14W	==>	12484.38	40.59082889	-104.75202784
17973.00	90.00	269.17	7420.00	393.61N	12578.12W	==>	12584.28	40.59082724	-104.75238789
18047.74	90.00	269.17	7420.00	392.53N	12652.86W	==>	12658.95	40.59082600	-104.75265700

All data is in Feet unless otherwise stated
Coordinates are from Slot MD's are from Rig and TVD's are from Rig (Planned Datum #1 4945.0ft above Mean Sea Level)
Vertical Section is from 0.00N 0.00E on azimuth 271.78 degrees
Bottom hole distance is 12658.95 Feet on azimuth 271.78 degrees from Wellhead
Calculation method uses Minimum Curvature method
Prepared by
Date Printed: 28-Sep-2021



Targets							
Name	North[ft]	East[ft]	TVD[ft]	Latitude	Longitude	Northing	Easting
Ruby West 6 - LP	533.50N	2899.98W	7420.00	40.59098200	-104.71753800	1459094.88	3217307.02
Ruby West 6 - BHL	392.53N	12652.86W	7420.00	40.59082600	-104.75265700	1458953.92	3207554.41

Survey Tool Program						
Reference	Survey Name	MD[ft]	TVD[ft]	Survey Tool	Error Model	
1026500	Planned	1573.00	1573.00	WdW Rate Gyro	Standard	
1026499	Planned	18047.74	7420.00	ISWWSA MWD	Rev 4 + SAG + FLT	

Notes