

BAYSWATER E&P, LLC

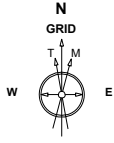
| | | | |
|---------------------|------------------------|-----------------|--------------------------|
| Location | Weld County, CO | Slot | Ruby West 1 |
| Field | WATTENBERG | Well | Ruby West 1 |
| Installation | Ruby 7-J Pad | Wellbore | Ruby West 1 (PWB) |

Created by sean.dolfinger
 Date plotted 28-Sep-2021
 Plot reference is Ruby West 1 (PWB).
 Ref wellpath is Ruby West 1 (PWP#1).
 Coordinates are in Feet reference Ruby West 1.
 True Vertical Depths are reference Rig Datum.
 Measured Depths are reference Rig Datum.
 Rig Datum: Planned Datum #1
 Rig Datum to Mean Sea Level: 4947.00 ft.
 Plot North is aligned to GRID North.

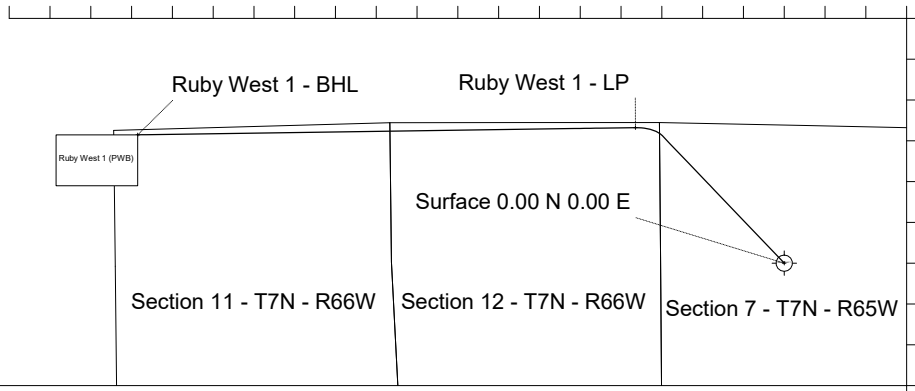
Scale 1 cm = 800 ft

East (Feet) ->

-14400 -12800 -11200 -9600 -8000 -6400 -4800 -3200 -1600 0 1600



Sep-27-2021
 EMM-2017 Dip: 66.82 deg Field: 51949.2 nT
 Lat: N40 35 22.7508 Long: W104 42 25.5996 Elev: 4923.00 ft
 Magnetic North is 7.83 deg East of True North
 GRID North is 0.51 deg East of True North
 To correct azimuth from True to GRID subtract 0.51 deg
 To correct azimuth from Magnetic to GRID add 7.32 deg

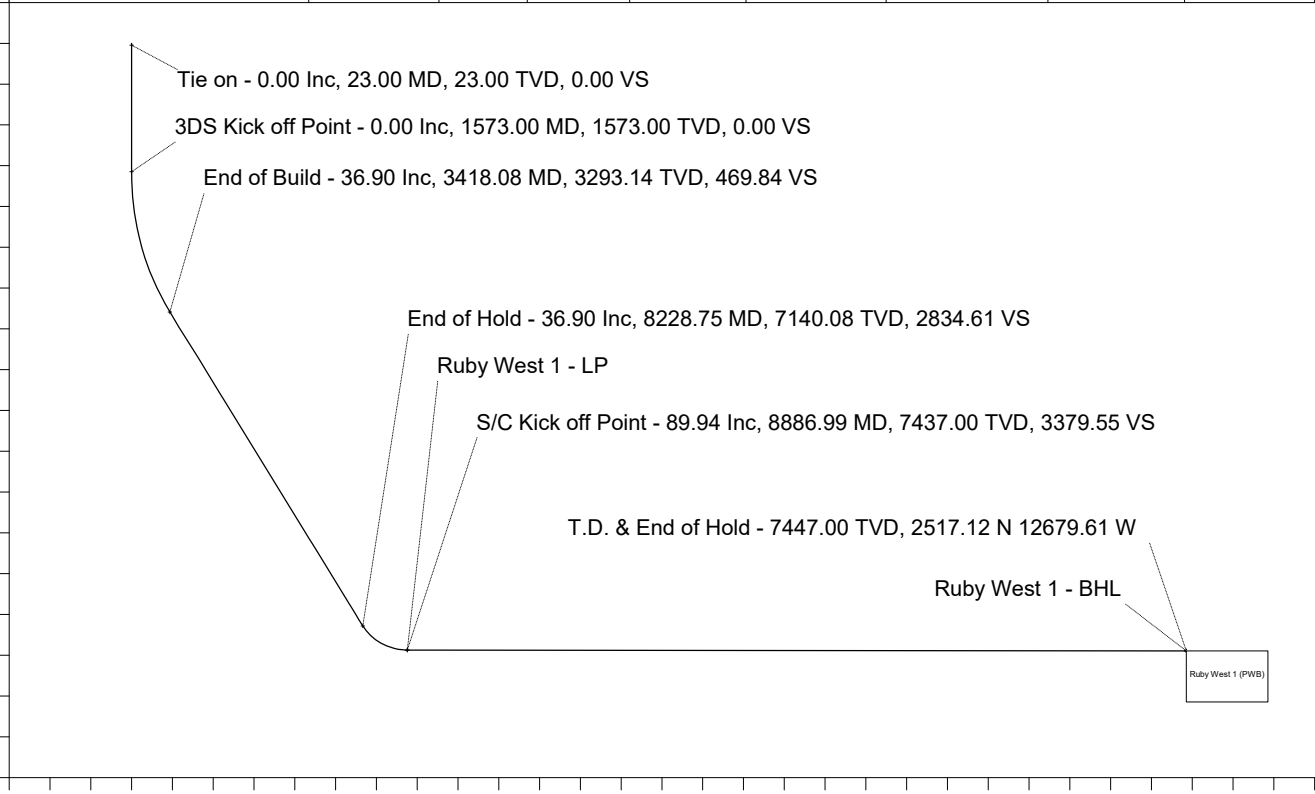


4800
3200
1600
0
-1600
North (Feet)
Scale 1 cm = 800 ft

WELL PROFILE DATA

| Point | MD | Inc | Azi | TVD | North | East | deg/100ft | V. Sect |
|-------------------------|----------|-------|--------|---------|-----------|------------|-----------|----------|
| Tie on | 23.00 | 0.00 | 0.00 | 23.00 | S 0.00 | W 0.00 | | 0.00 |
| KOP | 1573.00 | 0.00 | 316.28 | 1573.00 | S 0.00 | W 0.00 | 0.00 | 0.00 |
| End of Build | 3418.08 | 36.90 | 316.28 | 3293.14 | N 414.75 | W 396.68 | 2.00 | 469.84 |
| End of Hold | 8228.75 | 36.90 | 316.28 | 7140.08 | N 2502.23 | W 2393.19 | 0.00 | 2834.61 |
| Target Ruby W...1 - LP | 8886.99 | 89.94 | 269.17 | 7437.00 | N 2657.80 | W 2917.88 | 10.00 | 3379.55 |
| T.D. & Target Rub...BHL | 18649.74 | 89.94 | 269.17 | 7447.00 | N 2517.12 | W 12679.61 | 0.00 | 12927.04 |

Scale 1 cm = 500 ft
 True Vertical Depth (Feet)



-1000 -0 1000 2000 3000 4000 5000 6000 7000 8000 9000 10000 11000 12000 13000 14000

Scale 1 cm = 500 ft

Vertical Section (Feet) ->

Azimuth 281.23 with reference 0.00 N, 0.00 E from Ruby West 1



Wellhead Details

| Name | Latitude | Longitude | Northing | Easting | North | East | Slot Elevation Above Ground |
|-------------|-------------|---------------|--------------|--------------|-------|-------|-----------------------------|
| Ruby West 1 | 40.58965300 | -104.70711100 | 1458636.4488 | 3220207.0791 | 0.00N | 0.00E | 0.00 |

Declination

| Date | Source | Time |
|-------------|----------|-------|
| Sep-27-2021 | EMM-2017 | 13:43 |

Installation Details

| Name | Installation Position (Latitude) | Installation Position (Longitude) | Northing | Easting | Coord System Name | North Alignment |
|--------------|----------------------------------|-----------------------------------|--------------|--------------|--|-----------------|
| Ruby 7-J Pad | 40.58965300 | -104.70711100 | 1458636.4488 | 3220207.0791 | NAD83 Colorado State Planes, North Zone, US Foot | Grid |

Summary Wellpath

| MD[ft] | Inc[deg] | Azi[deg] | TVD[ft] | Vertical Depth SS | North[ft] | East[ft] | Dogleg [deg/100ft] | Vertical Section[ft] |
|----------|----------|----------|---------|-------------------|-----------|-----------|--------------------|----------------------|
| 23.00 | 0.00 | 0.00 | 23.00 | -4924.00 | 0.00N | 0.00E | | 0.00 |
| 1573.00 | 0.00 | 316.28 | 1573.00 | -3374.00 | 0.00N | 0.00E | ==> | 0.00 |
| 3418.08 | 36.90 | 316.28 | 3293.14 | -1653.86 | 414.75N | 396.68W | 2.00 | 469.84 |
| 8228.75 | 36.90 | 316.28 | 7140.08 | 2193.08 | 2502.23N | 2393.19W | ==> | 2834.61 |
| 8886.99 | 89.94 | 269.17 | 7437.00 | 2490.00 | 2657.80N | 2917.88W | 10.00 | 3379.55 |
| 18649.74 | 89.94 | 269.17 | 7447.00 | 2500.00 | 2517.12N | 12679.61W | ==> | 12927.04 |

Interpolated Wellpath

| MD[ft] | Inc[deg] | Azi[deg] | TVD[ft] | North[ft] | East[ft] | Dogleg [deg/100ft] | Vertical Section[ft] | Station Position (Latitude) | Station Position (Longitude) |
|---------|----------|----------|---------|-----------|----------|--------------------|----------------------|-----------------------------|------------------------------|
| 0.00 | 0.00 | 0.00 | 0.00 | 0.00N | 0.00E | | 0.00 | 40.58965300 | -104.70711100 |
| 23.00 | 0.00 | 0.00 | 23.00 | 0.00N | 0.00E | ==> | 0.00 | 40.58965300 | -104.70711100 |
| 100.00 | 0.00 | 0.00 | 100.00 | 0.00N | 0.00E | ==> | 0.00 | 40.58965300 | -104.70711100 |
| 200.00 | 0.00 | 0.00 | 200.00 | 0.00N | 0.00E | ==> | 0.00 | 40.58965300 | -104.70711100 |
| 300.00 | 0.00 | 0.00 | 300.00 | 0.00N | 0.00E | ==> | 0.00 | 40.58965300 | -104.70711100 |
| 400.00 | 0.00 | 0.00 | 400.00 | 0.00N | 0.00E | ==> | 0.00 | 40.58965300 | -104.70711100 |
| 500.00 | 0.00 | 0.00 | 500.00 | 0.00N | 0.00E | ==> | 0.00 | 40.58965300 | -104.70711100 |
| 600.00 | 0.00 | 0.00 | 600.00 | 0.00N | 0.00E | ==> | 0.00 | 40.58965300 | -104.70711100 |
| 700.00 | 0.00 | 0.00 | 700.00 | 0.00N | 0.00E | ==> | 0.00 | 40.58965300 | -104.70711100 |
| 800.00 | 0.00 | 0.00 | 800.00 | 0.00N | 0.00E | ==> | 0.00 | 40.58965300 | -104.70711100 |
| 900.00 | 0.00 | 0.00 | 900.00 | 0.00N | 0.00E | ==> | 0.00 | 40.58965300 | -104.70711100 |
| 1000.00 | 0.00 | 0.00 | 1000.00 | 0.00N | 0.00E | ==> | 0.00 | 40.58965300 | -104.70711100 |
| 1100.00 | 0.00 | 0.00 | 1100.00 | 0.00N | 0.00E | ==> | 0.00 | 40.58965300 | -104.70711100 |
| 1200.00 | 0.00 | 0.00 | 1200.00 | 0.00N | 0.00E | ==> | 0.00 | 40.58965300 | -104.70711100 |
| 1300.00 | 0.00 | 0.00 | 1300.00 | 0.00N | 0.00E | ==> | 0.00 | 40.58965300 | -104.70711100 |
| 1400.00 | 0.00 | 0.00 | 1400.00 | 0.00N | 0.00E | ==> | 0.00 | 40.58965300 | -104.70711100 |
| 1500.00 | 0.00 | 0.00 | 1500.00 | 0.00N | 0.00E | ==> | 0.00 | 40.58965300 | -104.70711100 |
| 1573.00 | 0.00 | 316.28 | 1573.00 | 0.00N | 0.00E | ==> | 0.00 | 40.58965300 | -104.70711100 |
| 1673.00 | 2.00 | 316.28 | 1672.98 | 1.26N | 1.21W | 2.00 | 1.43 | 40.58965649 | -104.70711530 |
| 1773.00 | 4.00 | 316.28 | 1772.84 | 5.04N | 4.82W | 2.00 | 5.71 | 40.58966696 | -104.70712820 |
| 1873.00 | 6.00 | 316.28 | 1872.45 | 11.34N | 10.85W | 2.00 | 12.85 | 40.58968440 | -104.70714969 |
| 1973.00 | 8.00 | 316.28 | 1971.70 | 20.15N | 19.27W | 2.00 | 22.82 | 40.58970877 | -104.70717973 |
| 2073.00 | 10.00 | 316.28 | 2070.47 | 31.45N | 30.08W | 2.00 | 35.63 | 40.58974007 | -104.70721829 |
| 2173.00 | 12.00 | 316.28 | 2168.62 | 45.24N | 43.27W | 2.00 | 51.25 | 40.58977824 | -104.70726533 |
| 2273.00 | 14.00 | 316.28 | 2266.06 | 61.50N | 58.82W | 2.00 | 69.67 | 40.58982324 | -104.70732078 |
| 2373.00 | 16.00 | 316.28 | 2362.64 | 80.20N | 76.71W | 2.00 | 90.85 | 40.58987501 | -104.70738459 |
| 2473.00 | 18.00 | 316.28 | 2458.27 | 101.33N | 96.91W | 2.00 | 114.79 | 40.58993349 | -104.70745666 |
| 2573.00 | 20.00 | 316.28 | 2552.82 | 124.86N | 119.41W | 2.00 | 141.44 | 40.58999862 | -104.70753692 |
| 2673.00 | 22.00 | 316.28 | 2646.17 | 150.75N | 144.18W | 2.00 | 170.78 | 40.59007031 | -104.70762526 |
| 2773.00 | 24.00 | 316.28 | 2738.21 | 178.99N | 171.19W | 2.00 | 202.76 | 40.59014847 | -104.70772158 |
| 2873.00 | 26.00 | 316.28 | 2828.84 | 209.53N | 200.40W | 2.00 | 237.36 | 40.59023301 | -104.70782576 |
| 2973.00 | 28.00 | 316.28 | 2917.94 | 242.34N | 231.78W | 2.00 | 274.53 | 40.59032382 | -104.70793768 |

All data is in Feet unless otherwise stated
 Coordinates are from Slot MD's are from Rig and TVD's are from Rig (Planned Datum #1 4947.0ft above Mean Sea Level)
 Vertical Section is from 0.00N 0.00E on azimuth 281.23 degrees
 Bottom hole distance is 12927.04 Feet on azimuth 281.23 degrees from Wellhead
 Calculation method uses Minimum Curvature method
 Prepared by
 Date Printed: 28-Sep-2021

SYSDRILL
Well Design Combined Report
Wellbore: Ruby West 1 (PWB)



| Interpolated Wellpath | | | | | | | | | |
|-----------------------|----------|----------|---------|-----------|----------|--------------------|----------------------|-----------------------------|------------------------------|
| MD[ft] | Inc[deg] | Azi[deg] | TVD[ft] | North[ft] | East[ft] | Dogleg [deg/100ft] | Vertical Section[ft] | Station Position (Latitude) | Station Position (Longitude) |
| 3073.00 | 30.00 | 316.28 | 3005.39 | 277.37N | 265.28W | 2.00 | 314.21 | 40.59042080 | -104.70805720 |
| 3173.00 | 32.00 | 316.28 | 3091.11 | 314.59N | 300.88W | 2.00 | 356.38 | 40.59052383 | -104.70818416 |
| 3273.00 | 34.00 | 316.28 | 3174.97 | 353.95N | 338.52W | 2.00 | 400.96 | 40.59063278 | -104.70831843 |
| 3373.00 | 36.00 | 316.28 | 3256.88 | 395.40N | 378.17W | 2.00 | 447.92 | 40.59074752 | -104.70845982 |
| 3418.08 | 36.90 | 316.28 | 3293.14 | 414.75N | 396.68W | 2.00 | 469.84 | 40.59080110 | -104.70852585 |
| 3473.00 | 36.90 | 316.28 | 3337.06 | 438.58N | 419.47W | ==> | 496.84 | 40.59086706 | -104.70860715 |
| 3573.00 | 36.90 | 316.28 | 3417.03 | 481.98N | 460.97W | ==> | 546.00 | 40.59098718 | -104.70875518 |
| 3673.00 | 36.90 | 316.28 | 3496.99 | 525.37N | 502.47W | ==> | 595.15 | 40.59110730 | -104.70890321 |
| 3773.00 | 36.90 | 316.28 | 3576.96 | 568.76N | 543.98W | ==> | 644.31 | 40.59122741 | -104.70905124 |
| 3873.00 | 36.90 | 316.28 | 3656.93 | 612.15N | 585.48W | ==> | 693.47 | 40.59134753 | -104.70919927 |
| 3973.00 | 36.90 | 316.28 | 3736.89 | 655.55N | 626.98W | ==> | 742.62 | 40.59146764 | -104.70934730 |
| 4073.00 | 36.90 | 316.28 | 3816.86 | 698.94N | 668.48W | ==> | 791.78 | 40.59158776 | -104.70949534 |
| 4173.00 | 36.90 | 316.28 | 3896.83 | 742.33N | 709.98W | ==> | 840.94 | 40.59170787 | -104.70964337 |
| 4273.00 | 36.90 | 316.28 | 3976.79 | 785.72N | 751.48W | ==> | 890.09 | 40.59182799 | -104.70979140 |
| 4373.00 | 36.90 | 316.28 | 4056.76 | 829.12N | 792.99W | ==> | 939.25 | 40.59194810 | -104.70993944 |
| 4473.00 | 36.90 | 316.28 | 4136.73 | 872.51N | 834.49W | ==> | 988.41 | 40.59206822 | -104.71008747 |
| 4573.00 | 36.90 | 316.28 | 4216.69 | 915.90N | 875.99W | ==> | 1037.56 | 40.59218833 | -104.71023551 |
| 4673.00 | 36.90 | 316.28 | 4296.66 | 959.30N | 917.49W | ==> | 1086.72 | 40.59230845 | -104.71038354 |
| 4773.00 | 36.90 | 316.28 | 4376.63 | 1002.69N | 958.99W | ==> | 1135.88 | 40.59242856 | -104.71053158 |
| 4873.00 | 36.90 | 316.28 | 4456.59 | 1046.08N | 1000.49W | ==> | 1185.03 | 40.59254867 | -104.71067961 |
| 4973.00 | 36.90 | 316.28 | 4536.56 | 1089.47N | 1042.00W | ==> | 1234.19 | 40.59266879 | -104.71082765 |
| 5073.00 | 36.90 | 316.28 | 4616.53 | 1132.87N | 1083.50W | ==> | 1283.35 | 40.59278890 | -104.71097569 |
| 5173.00 | 36.90 | 316.28 | 4696.49 | 1176.26N | 1125.00W | ==> | 1332.50 | 40.59290902 | -104.71112373 |
| 5273.00 | 36.90 | 316.28 | 4776.46 | 1219.65N | 1166.50W | ==> | 1381.66 | 40.59302913 | -104.71127176 |
| 5373.00 | 36.90 | 316.28 | 4856.43 | 1263.04N | 1208.00W | ==> | 1430.82 | 40.59314924 | -104.71141980 |
| 5473.00 | 36.90 | 316.28 | 4936.39 | 1306.44N | 1249.50W | ==> | 1479.97 | 40.59326935 | -104.71156784 |
| 5573.00 | 36.90 | 316.28 | 5016.36 | 1349.83N | 1291.01W | ==> | 1529.13 | 40.59338947 | -104.71171588 |
| 5673.00 | 36.90 | 316.28 | 5096.33 | 1393.22N | 1332.51W | ==> | 1578.29 | 40.59350958 | -104.71186392 |
| 5773.00 | 36.90 | 316.28 | 5176.29 | 1436.61N | 1374.01W | ==> | 1627.44 | 40.59362969 | -104.71201197 |
| 5873.00 | 36.90 | 316.28 | 5256.26 | 1480.01N | 1415.51W | ==> | 1676.60 | 40.59374980 | -104.71216001 |
| 5973.00 | 36.90 | 316.28 | 5336.23 | 1523.40N | 1457.01W | ==> | 1725.76 | 40.59386991 | -104.71230805 |
| 6073.00 | 36.90 | 316.28 | 5416.20 | 1566.79N | 1498.51W | ==> | 1774.91 | 40.59399003 | -104.71245609 |
| 6173.00 | 36.90 | 316.28 | 5496.16 | 1610.19N | 1540.02W | ==> | 1824.07 | 40.59411014 | -104.71260414 |
| 6273.00 | 36.90 | 316.28 | 5576.13 | 1653.58N | 1581.52W | ==> | 1873.23 | 40.59423025 | -104.71275218 |
| 6373.00 | 36.90 | 316.28 | 5656.10 | 1696.97N | 1623.02W | ==> | 1922.38 | 40.59435036 | -104.71290022 |
| 6473.00 | 36.90 | 316.28 | 5736.06 | 1740.36N | 1664.52W | ==> | 1971.54 | 40.59447047 | -104.71304827 |
| 6573.00 | 36.90 | 316.28 | 5816.03 | 1783.76N | 1706.02W | ==> | 2020.70 | 40.59459058 | -104.71319631 |
| 6673.00 | 36.90 | 316.28 | 5896.00 | 1827.15N | 1747.52W | ==> | 2069.85 | 40.59471069 | -104.71334436 |
| 6773.00 | 36.90 | 316.28 | 5975.96 | 1870.54N | 1789.03W | ==> | 2119.01 | 40.59483080 | -104.71349241 |
| 6873.00 | 36.90 | 316.28 | 6055.93 | 1913.93N | 1830.53W | ==> | 2168.17 | 40.59495091 | -104.71364045 |
| 6973.00 | 36.90 | 316.28 | 6135.90 | 1957.33N | 1872.03W | ==> | 2217.32 | 40.59507102 | -104.71378850 |
| 7073.00 | 36.90 | 316.28 | 6215.86 | 2000.72N | 1913.53W | ==> | 2266.48 | 40.59519113 | -104.71393655 |
| 7173.00 | 36.90 | 316.28 | 6295.83 | 2044.11N | 1955.03W | ==> | 2315.64 | 40.59531124 | -104.71408460 |
| 7273.00 | 36.90 | 316.28 | 6375.80 | 2087.50N | 1996.53W | ==> | 2364.79 | 40.59543135 | -104.71423265 |
| 7373.00 | 36.90 | 316.28 | 6455.76 | 2130.90N | 2038.04W | ==> | 2413.95 | 40.59555146 | -104.71438070 |
| 7473.00 | 36.90 | 316.28 | 6535.73 | 2174.29N | 2079.54W | ==> | 2463.11 | 40.59567157 | -104.71452875 |
| 7573.00 | 36.90 | 316.28 | 6615.70 | 2217.68N | 2121.04W | ==> | 2512.26 | 40.59579168 | -104.71467680 |
| 7673.00 | 36.90 | 316.28 | 6695.66 | 2261.08N | 2162.54W | ==> | 2561.42 | 40.59591179 | -104.71482485 |
| 7773.00 | 36.90 | 316.28 | 6775.63 | 2304.47N | 2204.04W | ==> | 2610.58 | 40.59603189 | -104.71497290 |
| 7873.00 | 36.90 | 316.28 | 6855.60 | 2347.86N | 2245.54W | ==> | 2659.73 | 40.59615200 | -104.71512095 |
| 7973.00 | 36.90 | 316.28 | 6935.56 | 2391.25N | 2287.05W | ==> | 2708.89 | 40.59627211 | -104.71526901 |
| 8073.00 | 36.90 | 316.28 | 7015.53 | 2434.65N | 2328.55W | ==> | 2758.05 | 40.59639222 | -104.71541706 |
| 8173.00 | 36.90 | 316.28 | 7095.50 | 2478.04N | 2370.05W | ==> | 2807.20 | 40.59651232 | -104.71556511 |
| 8228.75 | 36.90 | 316.28 | 7140.08 | 2502.23N | 2393.19W | ==> | 2834.61 | 40.59657928 | -104.71564765 |
| 8273.00 | 39.68 | 310.71 | 7174.82 | 2521.05N | 2413.09W | 10.00 | 2857.79 | 40.59663143 | -104.71571871 |
| 8373.00 | 46.74 | 300.33 | 7247.75 | 2560.36N | 2468.86W | 10.00 | 2920.15 | 40.59674067 | -104.71591826 |
| 8473.00 | 54.54 | 292.22 | 7311.18 | 2594.24N | 2538.16W | 10.00 | 2994.72 | 40.59683533 | -104.71616674 |
| 8573.00 | 62.79 | 285.58 | 7363.19 | 2621.65N | 2618.90W | 10.00 | 3079.25 | 40.59691253 | -104.71645659 |

All data is in Feet unless otherwise stated
Coordinates are from Slot MD's are from Rig and TVD's are from Rig (Planned Datum #1 4947.0ft above Mean Sea Level)
Vertical Section is from 0.00N 0.00E on azimuth 281.23 degrees
Bottom hole distance is 12927.04 Feet on azimuth 281.23 degrees from Wellhead
Calculation method uses Minimum Curvature method
Prepared by
Date Printed: 28-Sep-2021

SYSDRILL
Well Design Combined Report
Wellbore: Ruby West 1 (PWB)



| Interpolated Wellpath | | | | | | | | | |
|-----------------------|----------|----------|---------|-----------|----------|--------------------|----------------------|-----------------------------|------------------------------|
| MD[ft] | Inc[deg] | Azi[deg] | TVD[ft] | North[ft] | East[ft] | Dogleg [deg/100ft] | Vertical Section[ft] | Station Position (Latitude) | Station Position (Longitude) |
| 8673.00 | 71.30 | 279.88 | 7402.18 | 2641.77N | 2708.62W | 10.00 | 3171.17 | 40.59696993 | -104.71677900 |
| 8773.00 | 79.97 | 274.73 | 7426.98 | 2653.98N | 2804.59W | 10.00 | 3267.68 | 40.59700578 | -104.71712418 |
| 8873.00 | 88.72 | 269.85 | 7436.84 | 2657.92N | 2903.90W | 10.00 | 3365.86 | 40.59701899 | -104.71748164 |
| 8886.99 | 89.94 | 269.17 | 7437.00 | 2657.80N | 2917.88W | 10.00 | 3379.55 | 40.59701900 | -104.71753200 |
| 8973.00 | 89.94 | 269.17 | 7437.09 | 2656.56N | 3003.89W | ==> | 3463.67 | 40.59701768 | -104.71784172 |
| 9073.00 | 89.94 | 269.17 | 7437.19 | 2655.12N | 3103.88W | ==> | 3561.46 | 40.59701615 | -104.71820180 |
| 9173.00 | 89.94 | 269.17 | 7437.29 | 2653.68N | 3203.87W | ==> | 3659.26 | 40.59701461 | -104.71856188 |
| 9273.00 | 89.94 | 269.17 | 7437.40 | 2652.24N | 3303.85W | ==> | 3757.05 | 40.59701307 | -104.71892197 |
| 9373.00 | 89.94 | 269.17 | 7437.50 | 2650.80N | 3403.84W | ==> | 3854.85 | 40.59701154 | -104.71928205 |
| 9473.00 | 89.94 | 269.17 | 7437.60 | 2649.36N | 3503.83W | ==> | 3952.64 | 40.59701000 | -104.71964214 |
| 9573.00 | 89.94 | 269.17 | 7437.70 | 2647.92N | 3603.82W | ==> | 4050.44 | 40.59700846 | -104.72000222 |
| 9673.00 | 89.94 | 269.17 | 7437.81 | 2646.47N | 3703.81W | ==> | 4148.23 | 40.59700691 | -104.72036230 |
| 9773.00 | 89.94 | 269.17 | 7437.91 | 2645.03N | 3803.80W | ==> | 4246.03 | 40.59700537 | -104.72072239 |
| 9873.00 | 89.94 | 269.17 | 7438.01 | 2643.59N | 3903.79W | ==> | 4343.82 | 40.59700383 | -104.72108247 |
| 9973.00 | 89.94 | 269.17 | 7438.11 | 2642.15N | 4003.78W | ==> | 4441.62 | 40.59700228 | -104.72144255 |
| 10073.00 | 89.94 | 269.17 | 7438.21 | 2640.71N | 4103.77W | ==> | 4539.42 | 40.59700074 | -104.72180264 |
| 10173.00 | 89.94 | 269.17 | 7438.32 | 2639.27N | 4203.76W | ==> | 4637.21 | 40.59699919 | -104.72216272 |
| 10273.00 | 89.94 | 269.17 | 7438.42 | 2637.83N | 4303.75W | ==> | 4735.01 | 40.59699764 | -104.72252280 |
| 10373.00 | 89.94 | 269.17 | 7438.52 | 2636.39N | 4403.74W | ==> | 4832.80 | 40.59699609 | -104.72288289 |
| 10473.00 | 89.94 | 269.17 | 7438.62 | 2634.95N | 4503.73W | ==> | 4930.60 | 40.59699454 | -104.72324297 |
| 10573.00 | 89.94 | 269.17 | 7438.73 | 2633.51N | 4603.72W | ==> | 5028.39 | 40.59699299 | -104.72360306 |
| 10673.00 | 89.94 | 269.17 | 7438.83 | 2632.06N | 4703.71W | ==> | 5126.19 | 40.59699144 | -104.72396314 |
| 10773.00 | 89.94 | 269.17 | 7438.93 | 2630.62N | 4803.70W | ==> | 5223.98 | 40.59698988 | -104.72432322 |
| 10873.00 | 89.94 | 269.17 | 7439.03 | 2629.18N | 4903.69W | ==> | 5321.78 | 40.59698833 | -104.72468331 |
| 10973.00 | 89.94 | 269.17 | 7439.14 | 2627.74N | 5003.68W | ==> | 5419.57 | 40.59698677 | -104.72504339 |
| 11073.00 | 89.94 | 269.17 | 7439.24 | 2626.30N | 5103.67W | ==> | 5517.37 | 40.59698522 | -104.72540347 |
| 11173.00 | 89.94 | 269.17 | 7439.34 | 2624.86N | 5203.66W | ==> | 5615.16 | 40.59698366 | -104.72576356 |
| 11273.00 | 89.94 | 269.17 | 7439.44 | 2623.42N | 5303.65W | ==> | 5712.96 | 40.59698210 | -104.72612364 |
| 11373.00 | 89.94 | 269.17 | 7439.55 | 2621.98N | 5403.64W | ==> | 5810.75 | 40.59698054 | -104.72648372 |
| 11473.00 | 89.94 | 269.17 | 7439.65 | 2620.54N | 5503.63W | ==> | 5908.55 | 40.59697898 | -104.72684381 |
| 11573.00 | 89.94 | 269.17 | 7439.75 | 2619.10N | 5603.61W | ==> | 6006.34 | 40.59697741 | -104.72720389 |
| 11673.00 | 89.94 | 269.17 | 7439.85 | 2617.66N | 5703.60W | ==> | 6104.14 | 40.59697585 | -104.72756397 |
| 11773.00 | 89.94 | 269.17 | 7439.96 | 2616.21N | 5803.59W | ==> | 6201.93 | 40.59697429 | -104.72792406 |
| 11873.00 | 89.94 | 269.17 | 7440.06 | 2614.77N | 5903.58W | ==> | 6299.73 | 40.59697272 | -104.72828414 |
| 11973.00 | 89.94 | 269.17 | 7440.16 | 2613.33N | 6003.57W | ==> | 6397.52 | 40.59697115 | -104.72864422 |
| 12073.00 | 89.94 | 269.17 | 7440.26 | 2611.89N | 6103.56W | ==> | 6495.32 | 40.59696958 | -104.72900431 |
| 12173.00 | 89.94 | 269.17 | 7440.37 | 2610.45N | 6203.55W | ==> | 6593.11 | 40.59696802 | -104.72936439 |
| 12273.00 | 89.94 | 269.17 | 7440.47 | 2609.01N | 6303.54W | ==> | 6690.91 | 40.59696644 | -104.72972447 |
| 12373.00 | 89.94 | 269.17 | 7440.57 | 2607.57N | 6403.53W | ==> | 6788.70 | 40.59696487 | -104.73008456 |
| 12473.00 | 89.94 | 269.17 | 7440.67 | 2606.13N | 6503.52W | ==> | 6886.50 | 40.59696330 | -104.73044464 |
| 12573.00 | 89.94 | 269.17 | 7440.78 | 2604.69N | 6603.51W | ==> | 6984.29 | 40.59696173 | -104.73080472 |
| 12673.00 | 89.94 | 269.17 | 7440.88 | 2603.25N | 6703.50W | ==> | 7082.09 | 40.59696015 | -104.73116481 |
| 12773.00 | 89.94 | 269.17 | 7440.98 | 2601.80N | 6803.49W | ==> | 7179.88 | 40.59695858 | -104.73152489 |
| 12873.00 | 89.94 | 269.17 | 7441.08 | 2600.36N | 6903.48W | ==> | 7277.68 | 40.59695700 | -104.73188497 |
| 12973.00 | 89.94 | 269.17 | 7441.19 | 2598.92N | 7003.47W | ==> | 7375.47 | 40.59695542 | -104.73224506 |
| 13073.00 | 89.94 | 269.17 | 7441.29 | 2597.48N | 7103.46W | ==> | 7473.27 | 40.59695384 | -104.73260514 |
| 13173.00 | 89.94 | 269.17 | 7441.39 | 2596.04N | 7203.45W | ==> | 7571.06 | 40.59695226 | -104.73296522 |
| 13273.00 | 89.94 | 269.17 | 7441.49 | 2594.60N | 7303.44W | ==> | 7668.86 | 40.59695068 | -104.73332531 |
| 13373.00 | 89.94 | 269.17 | 7441.60 | 2593.16N | 7403.43W | ==> | 7766.65 | 40.59694910 | -104.73368539 |
| 13473.00 | 89.94 | 269.17 | 7441.70 | 2591.72N | 7503.42W | ==> | 7864.45 | 40.59694751 | -104.73404547 |
| 13573.00 | 89.94 | 269.17 | 7441.80 | 2590.28N | 7603.41W | ==> | 7962.24 | 40.59694593 | -104.73440555 |
| 13673.00 | 89.94 | 269.17 | 7441.90 | 2588.84N | 7703.40W | ==> | 8060.04 | 40.59694434 | -104.73476564 |
| 13773.00 | 89.94 | 269.17 | 7442.00 | 2587.39N | 7803.39W | ==> | 8157.83 | 40.59694275 | -104.73512572 |
| 13873.00 | 89.94 | 269.17 | 7442.11 | 2585.95N | 7903.37W | ==> | 8255.63 | 40.59694117 | -104.73548580 |
| 13973.00 | 89.94 | 269.17 | 7442.21 | 2584.51N | 8003.36W | ==> | 8353.42 | 40.59693958 | -104.73584589 |
| 14073.00 | 89.94 | 269.17 | 7442.31 | 2583.07N | 8103.35W | ==> | 8451.22 | 40.59693799 | -104.73620597 |
| 14173.00 | 89.94 | 269.17 | 7442.41 | 2581.63N | 8203.34W | ==> | 8549.02 | 40.59693639 | -104.73656605 |
| 14273.00 | 89.94 | 269.17 | 7442.52 | 2580.19N | 8303.33W | ==> | 8646.81 | 40.59693480 | -104.73692614 |
| 14373.00 | 89.94 | 269.17 | 7442.62 | 2578.75N | 8403.32W | ==> | 8744.61 | 40.59693321 | -104.73728622 |

All data is in Feet unless otherwise stated
Coordinates are from Slot MD's are from Rig and TVD's are from Rig (Planned Datum #1 4947.0ft above Mean Sea Level)
Vertical Section is from 0.00N 0.00E on azimuth 281.23 degrees
Bottom hole distance is 12927.04 Feet on azimuth 281.23 degrees from Wellhead
Calculation method uses Minimum Curvature method
Prepared by
Date Printed: 28-Sep-2021

SYS DRILL
Well Design Combined Report
Wellbore: Ruby West 1 (PWB)



| Interpolated Wellpath | | | | | | | | | |
|-----------------------|----------|----------|---------|-----------|-----------|--------------------|----------------------|-----------------------------|------------------------------|
| MD[ft] | Inc[deg] | Azi[deg] | TVD[ft] | North[ft] | East[ft] | Dogleg [deg/100ft] | Vertical Section[ft] | Station Position (Latitude) | Station Position (Longitude) |
| 14473.00 | 89.94 | 269.17 | 7442.72 | 2577.31N | 8503.31W | ==> | 8842.40 | 40.59693161 | -104.73764630 |
| 14573.00 | 89.94 | 269.17 | 7442.82 | 2575.87N | 8603.30W | ==> | 8940.20 | 40.59693002 | -104.73800638 |
| 14673.00 | 89.94 | 269.17 | 7442.93 | 2574.43N | 8703.29W | ==> | 9037.99 | 40.59692842 | -104.73836647 |
| 14773.00 | 89.94 | 269.17 | 7443.03 | 2572.99N | 8803.28W | ==> | 9135.79 | 40.59692682 | -104.73872655 |
| 14873.00 | 89.94 | 269.17 | 7443.13 | 2571.54N | 8903.27W | ==> | 9233.58 | 40.59692522 | -104.73908663 |
| 14973.00 | 89.94 | 269.17 | 7443.23 | 2570.10N | 9003.26W | ==> | 9331.38 | 40.59692362 | -104.73944672 |
| 15073.00 | 89.94 | 269.17 | 7443.34 | 2568.66N | 9103.25W | ==> | 9429.17 | 40.59692202 | -104.73980680 |
| 15173.00 | 89.94 | 269.17 | 7443.44 | 2567.22N | 9203.24W | ==> | 9526.97 | 40.59692042 | -104.74016688 |
| 15273.00 | 89.94 | 269.17 | 7443.54 | 2565.78N | 9303.23W | ==> | 9624.76 | 40.59691881 | -104.74052696 |
| 15373.00 | 89.94 | 269.17 | 7443.64 | 2564.34N | 9403.22W | ==> | 9722.56 | 40.59691721 | -104.74088705 |
| 15473.00 | 89.94 | 269.17 | 7443.75 | 2562.90N | 9503.21W | ==> | 9820.35 | 40.59691560 | -104.74124713 |
| 15573.00 | 89.94 | 269.17 | 7443.85 | 2561.46N | 9603.20W | ==> | 9918.15 | 40.59691399 | -104.74160721 |
| 15673.00 | 89.94 | 269.17 | 7443.95 | 2560.02N | 9703.19W | ==> | 10015.94 | 40.59691239 | -104.74196729 |
| 15773.00 | 89.94 | 269.17 | 7444.05 | 2558.58N | 9803.18W | ==> | 10113.74 | 40.59691078 | -104.74232738 |
| 15873.00 | 89.94 | 269.17 | 7444.16 | 2557.13N | 9903.17W | ==> | 10211.53 | 40.59690917 | -104.74268746 |
| 15973.00 | 89.94 | 269.17 | 7444.26 | 2555.69N | 10003.16W | ==> | 10309.33 | 40.59690755 | -104.74304754 |
| 16073.00 | 89.94 | 269.17 | 7444.36 | 2554.25N | 10103.15W | ==> | 10407.12 | 40.59690594 | -104.74340763 |
| 16173.00 | 89.94 | 269.17 | 7444.46 | 2552.81N | 10203.13W | ==> | 10504.92 | 40.59690433 | -104.74376771 |
| 16273.00 | 89.94 | 269.17 | 7444.57 | 2551.37N | 10303.12W | ==> | 10602.71 | 40.59690271 | -104.74412779 |
| 16373.00 | 89.94 | 269.17 | 7444.67 | 2549.93N | 10403.11W | ==> | 10700.51 | 40.59690110 | -104.74448787 |
| 16473.00 | 89.94 | 269.17 | 7444.77 | 2548.49N | 10503.10W | ==> | 10798.30 | 40.59689948 | -104.74484796 |
| 16573.00 | 89.94 | 269.17 | 7444.87 | 2547.05N | 10603.09W | ==> | 10896.10 | 40.59689786 | -104.74520804 |
| 16673.00 | 89.94 | 269.17 | 7444.98 | 2545.61N | 10703.08W | ==> | 10993.89 | 40.59689624 | -104.74556812 |
| 16773.00 | 89.94 | 269.17 | 7445.08 | 2544.17N | 10803.07W | ==> | 11091.69 | 40.59689462 | -104.74592820 |
| 16873.00 | 89.94 | 269.17 | 7445.18 | 2542.73N | 10903.06W | ==> | 11189.48 | 40.59689300 | -104.74628829 |
| 16973.00 | 89.94 | 269.17 | 7445.28 | 2541.28N | 11003.05W | ==> | 11287.28 | 40.59689138 | -104.74664837 |
| 17073.00 | 89.94 | 269.17 | 7445.38 | 2539.84N | 11103.04W | ==> | 11385.07 | 40.59688975 | -104.74700845 |
| 17173.00 | 89.94 | 269.17 | 7445.49 | 2538.40N | 11203.03W | ==> | 11482.87 | 40.59688813 | -104.74736853 |
| 17273.00 | 89.94 | 269.17 | 7445.59 | 2536.96N | 11303.02W | ==> | 11580.66 | 40.59688650 | -104.74772862 |
| 17373.00 | 89.94 | 269.17 | 7445.69 | 2535.52N | 11403.01W | ==> | 11678.46 | 40.59688487 | -104.74808870 |
| 17473.00 | 89.94 | 269.17 | 7445.79 | 2534.08N | 11503.00W | ==> | 11776.25 | 40.59688325 | -104.74844878 |
| 17573.00 | 89.94 | 269.17 | 7445.90 | 2532.64N | 11602.99W | ==> | 11874.05 | 40.59688162 | -104.74880886 |
| 17673.00 | 89.94 | 269.17 | 7446.00 | 2531.20N | 11702.98W | ==> | 11971.84 | 40.59687999 | -104.74916895 |
| 17773.00 | 89.94 | 269.17 | 7446.10 | 2529.76N | 11802.97W | ==> | 12069.64 | 40.59687835 | -104.74952903 |
| 17873.00 | 89.94 | 269.17 | 7446.20 | 2528.32N | 11902.96W | ==> | 12167.43 | 40.59687672 | -104.74988911 |
| 17973.00 | 89.94 | 269.17 | 7446.31 | 2526.87N | 12002.95W | ==> | 12265.23 | 40.59687509 | -104.75024919 |
| 18073.00 | 89.94 | 269.17 | 7446.41 | 2525.43N | 12102.94W | ==> | 12363.02 | 40.59687345 | -104.75060927 |
| 18173.00 | 89.94 | 269.17 | 7446.51 | 2523.99N | 12202.93W | ==> | 12460.82 | 40.59687182 | -104.75096936 |
| 18273.00 | 89.94 | 269.17 | 7446.61 | 2522.55N | 12302.92W | ==> | 12558.61 | 40.59687018 | -104.75132944 |
| 18373.00 | 89.94 | 269.17 | 7446.72 | 2521.11N | 12402.91W | ==> | 12656.41 | 40.59686854 | -104.75168952 |
| 18473.00 | 89.94 | 269.17 | 7446.82 | 2519.67N | 12502.89W | ==> | 12754.21 | 40.59686690 | -104.75204960 |
| 18573.00 | 89.94 | 269.17 | 7446.92 | 2518.23N | 12602.88W | ==> | 12852.00 | 40.59686526 | -104.75240969 |
| 18649.74 | 89.94 | 269.17 | 7447.00 | 2517.12N | 12679.61W | ==> | 12927.04 | 40.59686400 | -104.75268600 |

All data is in Feet unless otherwise stated
Coordinates are from Slot MD's are from Rig and TVD's are from Rig (Planned Datum #1 4947.0ft above Mean Sea Level)
Vertical Section is from 0.00N 0.00E on azimuth 281.23 degrees
Bottom hole distance is 12927.04 Feet on azimuth 281.23 degrees from Wellhead
Calculation method uses Minimum Curvature method
Prepared by
Date Printed: 28-Sep-2021



| Targets | | | | | | | |
|-------------------|-----------|-----------|---------|-------------|---------------|------------|------------|
| Name | North[ft] | East[ft] | TVD[ft] | Latitude | Longitude | Northing | Easting |
| Ruby West 1 - LP | 2657.80N | 2917.88W | 7437.00 | 40.59701900 | -104.71753200 | 1461294.18 | 3217289.28 |
| Ruby West 1 - BHL | 2517.12N | 12679.61W | 7447.00 | 40.59686400 | -104.75268600 | 1461153.50 | 3207527.82 |

| Survey Tool Program | | | | | | |
|---------------------|-------------|----------|---------|---------------|-------------------|--|
| Reference | Survey Name | MD[ft] | TVD[ft] | Survey Tool | Error Model | |
| 1026395 | Planned | 1573.00 | 1573.00 | WdW Rate Gyro | Standard | |
| 1026394 | Planned | 18649.74 | 7447.00 | ISWWSA MWD | Rev 4 + SAG + FLT | |

Notes