

BAYSWATER E&P, LLC

Location	Weld County, CO	Slot	Ruby East 2
Field	WATTENBERG	Well	Ruby East 2
Installation	Ruby 7-J Pad	Wellbore	Ruby East 2 (PWB)

Created by sean.dolfinger
 Date plotted 28-Sep-2021
 Plot reference is Ruby East 2 (PWB).
 Ref wellpath is Ruby East 2 (PWP#1).
 Coordinates are in Feet reference Ruby East 2.
 True Vertical Depths are reference Rig Datum.
 Measured Depths are reference Rig Datum.
 Rig Datum: Planned Datum #1
 Rig Datum to Mean Sea Level: 4948.00 ft.
 Plot North is aligned to GRID North.

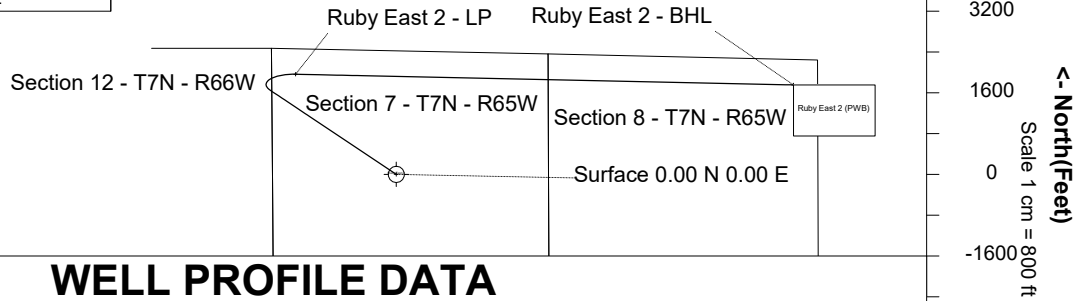
Scale 1 cm = 800 ft

East (Feet) ->

-4800 -3200 -1600 0 1600 3200 4800 6400 8000 9600



Sep-27-2021
 EMM-2017 Dip: 66.82 deg Field: 51949.2 nT
 Lat: N40 35 22.7508 Long: W104 42 35.5996 Elev: 4923.00 ft
 Magnetic North is 7.83 deg East of True North
 GRID North is 0.51 deg East of True North
 To correct azimuth from True to GRID subtract 0.51 deg
 To correct azimuth from Magnetic to GRID add 7.32 deg

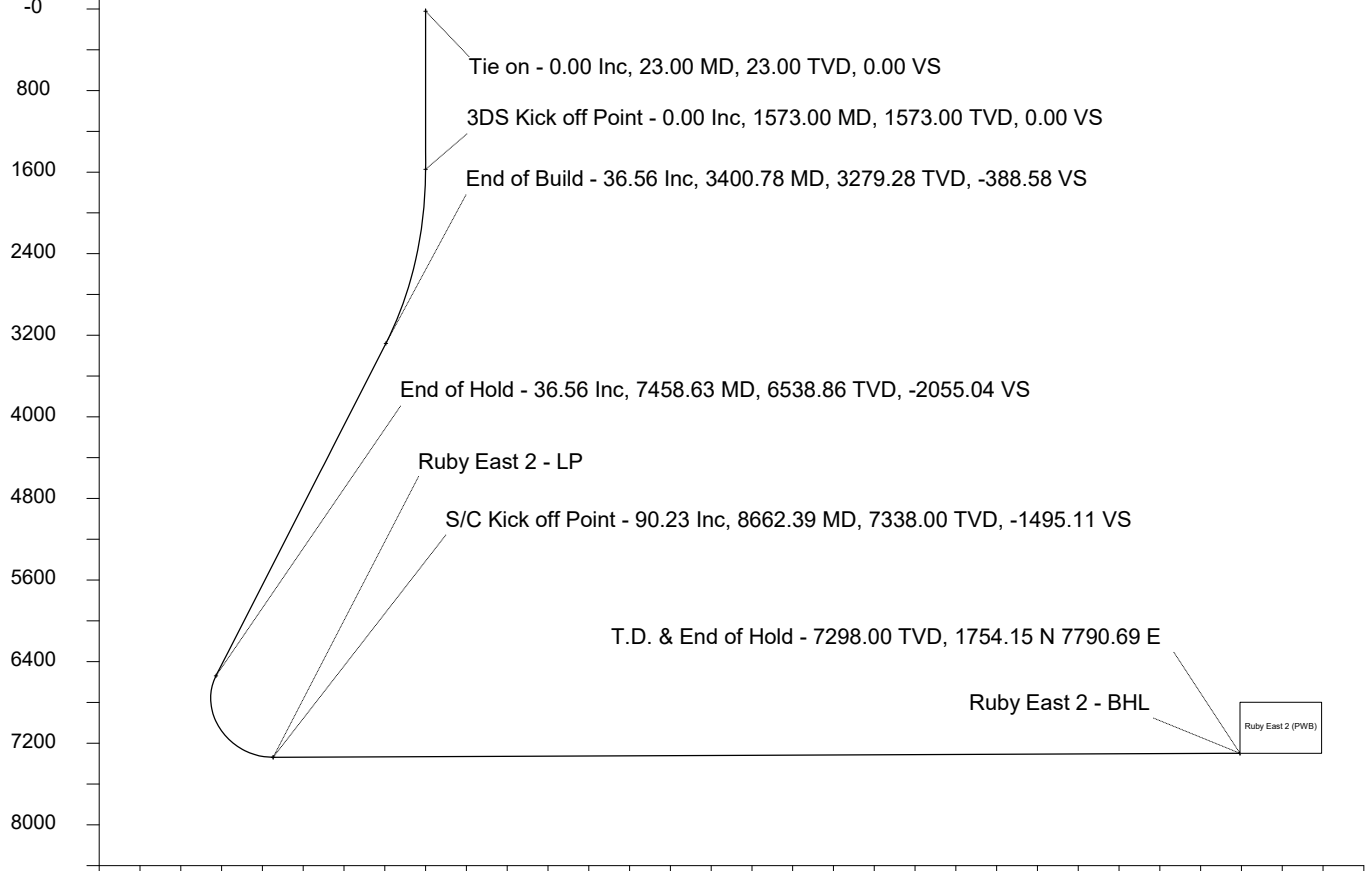


WELL PROFILE DATA

Point	MD	Inc	Azi	TVD	North	East	deg/100ft	V. Sect
Tie on	23.00	0.00	0.00	23.00	S 0.00	W 0.00		0.00
KOP	1573.00	0.00	303.72	1573.00	S 0.00	W 0.00	0.00	0.00
End of Build	3400.78	36.56	303.72	3279.28	N 312.85	W 468.75	2.00	-388.58
End of Hold	7458.63	36.56	303.72	6538.86	N 1654.53	W 2479.02	0.00	-2055.04
Target Ruby E...2 - LP	8662.39	90.23	91.23	7338.00	N 1963.70	W 1974.68	10.00	-1495.11
T.D. & Target Rub...BHL	18430.09	90.23	91.23	7298.00	N 1754.15	E 7790.69	0.00	7985.73

Scale 1 cm = 400 ft

<- True Vertical Depth (Feet)



-3200 -2400 -1600 -800 0 800 1600 2400 3200 4000 4800 5600 6400 7200 8000 8800

Scale 1 cm = 400 ft

Vertical Section (Feet) ->

Azimuth 77.31 with reference 0.00 N, 0.00 E from Ruby East 2



Wellhead Details							
Name	Latitude	Longitude	Northing	Easting	North	East	Slot Elevation Above Ground
Ruby East 2	40.59043500	-104.70710200	1458921.3533	3220207.0312	284.91N	0.05W	0.00

Declination		
Date	Source	Time
Sep-27-2021	EMM-2017	13:43

Installation Details						
Name	Installation Position (Latitude)	Installation Position (Longitude)	Northing	Easting	Coord System Name	North Alignment
Ruby 7-J Pad	40.58965300	-104.70711100	1458636.4488	3220207.0791	NAD83 Colorado State Planes, North Zone, US Foot	Grid

Summary Wellpath								
MD[ft]	Inc[deg]	Azi[deg]	TVD[ft]	Vertical Depth SS	North[ft]	East[ft]	Dogleg [deg/100ft]	Vertical Section[ft]
23.00	0.00	0.00	23.00	-4925.00	0.00N	0.00E		0.00
1573.00	0.00	303.72	1573.00	-3375.00	0.00N	0.00E	==>	0.00
3400.78	36.56	303.72	3279.28	-1668.72	312.85N	468.75W	2.00	-388.58
7458.63	36.56	303.72	6538.86	1590.86	1654.53N	2479.02W	==>	-2055.04
8662.39	90.23	91.23	7338.00	2390.00	1963.70N	1974.68W	10.00	-1495.11
18430.09	90.23	91.23	7298.00	2350.00	1754.15N	7790.69E	==>	7985.73

Interpolated Wellpath									
MD[ft]	Inc[deg]	Azi[deg]	TVD[ft]	North[ft]	East[ft]	Dogleg [deg/100ft]	Vertical Section[ft]	Station Position (Latitude)	Station Position (Longitude)
0.00	0.00	0.00	0.00	0.00N	0.00E		0.00	40.59043500	-104.70710200
23.00	0.00	0.00	23.00	0.00N	0.00E	==>	0.00	40.59043500	-104.70710200
100.00	0.00	0.00	100.00	0.00N	0.00E	==>	0.00	40.59043500	-104.70710200
200.00	0.00	0.00	200.00	0.00N	0.00E	==>	0.00	40.59043500	-104.70710200
300.00	0.00	0.00	300.00	0.00N	0.00E	==>	0.00	40.59043500	-104.70710200
400.00	0.00	0.00	400.00	0.00N	0.00E	==>	0.00	40.59043500	-104.70710200
500.00	0.00	0.00	500.00	0.00N	0.00E	==>	0.00	40.59043500	-104.70710200
600.00	0.00	0.00	600.00	0.00N	0.00E	==>	0.00	40.59043500	-104.70710200
700.00	0.00	0.00	700.00	0.00N	0.00E	==>	0.00	40.59043500	-104.70710200
800.00	0.00	0.00	800.00	0.00N	0.00E	==>	0.00	40.59043500	-104.70710200
900.00	0.00	0.00	900.00	0.00N	0.00E	==>	0.00	40.59043500	-104.70710200
1000.00	0.00	0.00	1000.00	0.00N	0.00E	==>	0.00	40.59043500	-104.70710200
1100.00	0.00	0.00	1100.00	0.00N	0.00E	==>	0.00	40.59043500	-104.70710200
1200.00	0.00	0.00	1200.00	0.00N	0.00E	==>	0.00	40.59043500	-104.70710200
1300.00	0.00	0.00	1300.00	0.00N	0.00E	==>	0.00	40.59043500	-104.70710200
1400.00	0.00	0.00	1400.00	0.00N	0.00E	==>	0.00	40.59043500	-104.70710200
1500.00	0.00	0.00	1500.00	0.00N	0.00E	==>	0.00	40.59043500	-104.70710200
1573.00	0.00	303.72	1573.00	0.00N	0.00E	==>	0.00	40.59043500	-104.70710200
1673.00	2.00	303.72	1672.98	0.97N	1.45W	2.00	-1.20	40.59043769	-104.70710719
1773.00	4.00	303.72	1772.84	3.87N	5.80W	2.00	-4.81	40.59044578	-104.70712277
1873.00	6.00	303.72	1872.45	8.71N	13.05W	2.00	-10.82	40.59045923	-104.70714872
1973.00	8.00	303.72	1971.70	15.48N	23.19W	2.00	-19.22	40.59047805	-104.70718499
2073.00	10.00	303.72	2070.47	24.16N	36.20W	2.00	-30.01	40.59050220	-104.70723156
2173.00	12.00	303.72	2168.62	34.75N	52.07W	2.00	-43.16	40.59053166	-104.70728836
2273.00	14.00	303.72	2266.06	47.24N	70.78W	2.00	-58.67	40.59056640	-104.70735532
2373.00	16.00	303.72	2362.64	61.61N	92.31W	2.00	-76.52	40.59060636	-104.70743236
2473.00	18.00	303.72	2458.27	77.84N	116.62W	2.00	-96.68	40.59065150	-104.70751939
2573.00	20.00	303.72	2552.82	95.91N	143.70W	2.00	-119.13	40.59070177	-104.70761630
2673.00	22.00	303.72	2646.17	115.80N	173.51W	2.00	-143.83	40.59075710	-104.70772297
2773.00	24.00	303.72	2738.21	137.49N	206.01W	2.00	-170.77	40.59081743	-104.70783928
2873.00	26.00	303.72	2828.84	160.95N	241.16W	2.00	-199.91	40.59088268	-104.70796508
2973.00	28.00	303.72	2917.94	186.15N	278.92W	2.00	-231.21	40.59095277	-104.70810022

All data is in Feet unless otherwise stated
Coordinates are from Slot MD's are from Rig and TVD's are from Rig (Planned Datum #1 4948.0ft above Mean Sea Level)
Vertical Section is from 0.00N 0.00E on azimuth 77.31 degrees
Bottom hole distance is 7985.73 Feet on azimuth 77.31 degrees from Wellhead
Calculation method uses Minimum Curvature method
Prepared by
Date Printed: 28-Sep-2021

SYSDRILL
Well Design Combined Report
Wellbore: Ruby East 2 (PWB)



Interpolated Wellpath									
MD[ft]	Inc[deg]	Azi[deg]	TVD[ft]	North[ft]	East[ft]	Dogleg [deg/100ft]	Vertical Section[ft]	Station Position (Latitude)	Station Position (Longitude)
3073.00	30.00	303.72	3005.39	213.06N	319.24W	2.00	-264.64	40.59102763	-104.70824454
3173.00	32.00	303.72	3091.11	241.65N	362.08W	2.00	-300.15	40.59110715	-104.70839785
3273.00	34.00	303.72	3174.97	271.89N	407.37W	2.00	-337.70	40.59119124	-104.70855997
3373.00	36.00	303.72	3256.88	303.73N	455.08W	2.00	-377.25	40.59127979	-104.70873071
3400.78	36.56	303.72	3279.28	312.85N	468.75W	2.00	-388.58	40.59130518	-104.70877965
3473.00	36.56	303.72	3337.29	336.73N	504.53W	==>	-418.24	40.59137159	-104.70890769
3573.00	36.56	303.72	3417.62	369.79N	554.07W	==>	-459.31	40.59146355	-104.70908500
3673.00	36.56	303.72	3497.94	402.86N	603.61W	==>	-500.38	40.59155552	-104.70926230
3773.00	36.56	303.72	3578.27	435.92N	653.15W	==>	-541.44	40.59164748	-104.70943961
3873.00	36.56	303.72	3658.60	468.98N	702.69W	==>	-582.51	40.59173944	-104.70961692
3973.00	36.56	303.72	3738.93	502.05N	752.23W	==>	-623.58	40.59183140	-104.70979422
4073.00	36.56	303.72	3819.26	535.11N	801.77W	==>	-664.65	40.59192336	-104.70997153
4173.00	36.56	303.72	3899.58	568.18N	851.31W	==>	-705.71	40.59201532	-104.71014884
4273.00	36.56	303.72	3979.91	601.24N	900.85W	==>	-746.78	40.59210729	-104.71032615
4373.00	36.56	303.72	4060.24	634.30N	950.39W	==>	-787.85	40.59219925	-104.71050346
4473.00	36.56	303.72	4140.57	667.37N	999.93W	==>	-828.91	40.59229121	-104.71068077
4573.00	36.56	303.72	4220.89	700.43N	1049.47W	==>	-869.98	40.59238317	-104.71085808
4673.00	36.56	303.72	4301.22	733.49N	1099.01W	==>	-911.05	40.59247513	-104.71103539
4773.00	36.56	303.72	4381.55	766.56N	1148.55W	==>	-952.12	40.59256709	-104.71121270
4873.00	36.56	303.72	4461.88	799.62N	1198.09W	==>	-993.18	40.59265905	-104.71139001
4973.00	36.56	303.72	4542.21	832.69N	1247.63W	==>	-1034.25	40.59275101	-104.71156732
5073.00	36.56	303.72	4622.53	865.75N	1297.17W	==>	-1075.32	40.59284296	-104.71174463
5173.00	36.56	303.72	4702.86	898.81N	1346.71W	==>	-1116.39	40.59293492	-104.71192195
5273.00	36.56	303.72	4783.19	931.88N	1396.25W	==>	-1157.45	40.59302688	-104.71209926
5373.00	36.56	303.72	4863.52	964.94N	1445.79W	==>	-1198.52	40.59311884	-104.71227657
5473.00	36.56	303.72	4943.85	998.00N	1495.33W	==>	-1239.59	40.59321080	-104.71245389
5573.00	36.56	303.72	5024.17	1031.07N	1544.87W	==>	-1280.66	40.59330275	-104.71263120
5673.00	36.56	303.72	5104.50	1064.13N	1594.41W	==>	-1321.72	40.59339471	-104.71280852
5773.00	36.56	303.72	5184.83	1097.20N	1643.95W	==>	-1362.79	40.59348667	-104.71298583
5873.00	36.56	303.72	5265.16	1130.26N	1693.49W	==>	-1403.86	40.59357863	-104.71316315
5973.00	36.56	303.72	5345.48	1163.32N	1743.03W	==>	-1444.93	40.59367058	-104.71334047
6073.00	36.56	303.72	5425.81	1196.39N	1792.57W	==>	-1485.99	40.59376254	-104.71351778
6173.00	36.56	303.72	5506.14	1229.45N	1842.11W	==>	-1527.06	40.59385449	-104.71369510
6273.00	36.56	303.72	5586.47	1262.51N	1891.65W	==>	-1568.13	40.59394645	-104.71387242
6373.00	36.56	303.72	5666.80	1295.58N	1941.19W	==>	-1609.20	40.59403840	-104.71404974
6473.00	36.56	303.72	5747.12	1328.64N	1990.73W	==>	-1650.26	40.59413036	-104.71422706
6573.00	36.56	303.72	5827.45	1361.71N	2040.27W	==>	-1691.33	40.59422231	-104.71440438
6673.00	36.56	303.72	5907.78	1394.77N	2089.81W	==>	-1732.40	40.59431427	-104.71458170
6773.00	36.56	303.72	5988.11	1427.83N	2139.35W	==>	-1773.47	40.59440622	-104.71475902
6873.00	36.56	303.72	6068.44	1460.90N	2188.89W	==>	-1814.53	40.59449818	-104.71493634
6973.00	36.56	303.72	6148.76	1493.96N	2238.43W	==>	-1855.60	40.59459013	-104.71511366
7073.00	36.56	303.72	6229.09	1527.02N	2287.97W	==>	-1896.67	40.59468208	-104.71529098
7173.00	36.56	303.72	6309.42	1560.09N	2337.51W	==>	-1937.73	40.59477404	-104.71546830
7273.00	36.56	303.72	6389.75	1593.15N	2387.05W	==>	-1978.80	40.59486599	-104.71564563
7373.00	36.56	303.72	6470.07	1626.22N	2436.59W	==>	-2019.87	40.59495794	-104.71582295
7458.63	36.56	303.72	6538.86	1654.53N	2479.02W	==>	-2055.04	40.59503668	-104.71597479
7473.00	35.44	305.26	6550.49	1659.31N	2485.98W	10.00	-2060.78	40.59504997	-104.71599971
7573.00	28.39	318.77	6635.42	1694.01N	2525.42W	10.00	-2091.63	40.59514619	-104.71614062
7673.00	23.36	338.75	6725.54	1730.46N	2548.33W	10.00	-2105.98	40.59524678	-104.71622195
7773.00	21.80	4.68	6818.10	1767.54N	2554.02W	10.00	-2103.38	40.59534869	-104.71624125
7873.00	24.40	29.48	6910.29	1804.13N	2542.31W	10.00	-2083.92	40.59544882	-104.71619792
7973.00	30.10	47.59	6999.31	1839.11N	2513.55W	10.00	-2048.18	40.59554414	-104.71609327
8073.00	37.49	59.77	7082.45	1871.42N	2468.63W	10.00	-1997.26	40.59563174	-104.71593049
8173.00	45.77	68.26	7157.19	1900.09N	2408.91W	10.00	-1932.70	40.59570897	-104.71571453
8273.00	54.52	74.60	7221.25	1924.23N	2336.19W	10.00	-1856.45	40.59577348	-104.71545194
8373.00	63.53	79.67	7272.70	1943.13N	2252.70W	10.00	-1770.85	40.59582330	-104.71515070
8473.00	72.69	83.99	7309.96	1956.19N	2160.96W	10.00	-1678.48	40.59585692	-104.71481996
8573.00	81.94	87.89	7331.90	1963.03N	2063.77W	10.00	-1582.16	40.59587333	-104.71446979

All data is in Feet unless otherwise stated
Coordinates are from Slot MD's are from Rig and TVD's are from Rig (Planned Datum #1 4948.0ft above Mean Sea Level)
Vertical Section is from 0.00N 0.00E on azimuth 77.31 degrees
Bottom hole distance is 7985.73 Feet on azimuth 77.31 degrees from Wellhead
Calculation method uses Minimum Curvature method
Prepared by
Date Printed: 28-Sep-2021

SYS DRILL
Well Design Combined Report
Wellbore: Ruby East 2 (PWB)



Interpolated Wellpath									
MD[ft]	Inc[deg]	Azi[deg]	TVD[ft]	North[ft]	East[ft]	Dogleg [deg/100ft]	Vertical Section[ft]	Station Position (Latitude)	Station Position (Longitude)
8662.39	90.23	91.23	7338.00	1963.70N	1974.68W	10.00	-1495.11	40.59587300	-104.71414900
8673.00	90.23	91.23	7337.96	1963.47N	1964.07W	==>	-1484.81	40.59587212	-104.71411080
8773.00	90.23	91.23	7337.55	1961.32N	1864.10W	==>	-1387.74	40.59586380	-104.71375088
8873.00	90.23	91.23	7337.14	1959.18N	1764.12W	==>	-1290.68	40.59585547	-104.71339097
8973.00	90.23	91.23	7336.73	1957.03N	1664.14W	==>	-1193.62	40.59584715	-104.71303105
9073.00	90.23	91.23	7336.32	1954.89N	1564.17W	==>	-1096.55	40.59583883	-104.71267114
9173.00	90.23	91.23	7335.91	1952.74N	1464.19W	==>	-999.49	40.59583050	-104.71231122
9273.00	90.23	91.23	7335.50	1950.60N	1364.21W	==>	-902.43	40.59582218	-104.71195131
9373.00	90.23	91.23	7335.09	1948.45N	1264.24W	==>	-805.36	40.59581385	-104.71159140
9473.00	90.23	91.23	7334.68	1946.31N	1164.26W	==>	-708.30	40.59580552	-104.71123148
9573.00	90.23	91.23	7334.27	1944.16N	1064.29W	==>	-611.24	40.59579719	-104.71087157
9673.00	90.23	91.23	7333.86	1942.01N	964.31W	==>	-514.17	40.59578886	-104.71051165
9773.00	90.23	91.23	7333.45	1939.87N	864.33W	==>	-417.11	40.59578053	-104.71015174
9873.00	90.23	91.23	7333.04	1937.72N	764.36W	==>	-320.05	40.59577219	-104.70979182
9973.00	90.23	91.23	7332.63	1935.58N	664.38W	==>	-222.99	40.59576386	-104.70943191
10073.00	90.23	91.23	7332.22	1933.43N	564.41W	==>	-125.92	40.59575552	-104.70907200
10173.00	90.23	91.23	7331.81	1931.29N	464.43W	==>	-28.86	40.59574719	-104.70871208
10273.00	90.23	91.23	7331.40	1929.14N	364.45W	==>	68.20	40.59573885	-104.70835217
10373.00	90.23	91.23	7330.99	1927.00N	264.48W	==>	165.27	40.59573051	-104.70799226
10473.00	90.23	91.23	7330.59	1924.85N	164.50W	==>	262.33	40.59572217	-104.70763234
10573.00	90.23	91.23	7330.18	1922.71N	64.52W	==>	359.39	40.59571383	-104.70727243
10673.00	90.23	91.23	7329.77	1920.56N	35.45E	==>	456.46	40.59570549	-104.70691251
10773.00	90.23	91.23	7329.36	1918.42N	135.43E	==>	553.52	40.59569715	-104.70655260
10873.00	90.23	91.23	7328.95	1916.27N	235.40E	==>	650.58	40.59568880	-104.70619269
10973.00	90.23	91.23	7328.54	1914.13N	335.38E	==>	747.65	40.59568046	-104.70583278
11073.00	90.23	91.23	7328.13	1911.98N	435.36E	==>	844.71	40.59567212	-104.70547286
11173.00	90.23	91.23	7327.72	1909.83N	535.33E	==>	941.77	40.59566376	-104.70511295
11273.00	90.23	91.23	7327.31	1907.69N	635.31E	==>	1038.84	40.59565541	-104.70475304
11373.00	90.23	91.23	7326.90	1905.54N	735.28E	==>	1135.90	40.59564706	-104.70439312
11473.00	90.23	91.23	7326.49	1903.40N	835.26E	==>	1232.96	40.59563871	-104.70403321
11573.00	90.23	91.23	7326.08	1901.25N	935.24E	==>	1330.02	40.59563036	-104.70367330
11673.00	90.23	91.23	7325.67	1899.11N	1035.21E	==>	1427.09	40.59562201	-104.70331339
11773.00	90.23	91.23	7325.26	1896.96N	1135.19E	==>	1524.15	40.59561365	-104.70295347
11873.00	90.23	91.23	7324.85	1894.82N	1235.17E	==>	1621.21	40.59560530	-104.70259356
11973.00	90.23	91.23	7324.44	1892.67N	1335.14E	==>	1718.28	40.59559694	-104.70223365
12073.00	90.23	91.23	7324.03	1890.53N	1435.12E	==>	1815.34	40.59558858	-104.70187374
12173.00	90.23	91.23	7323.62	1888.38N	1535.09E	==>	1912.40	40.59558023	-104.70151383
12273.00	90.23	91.23	7323.21	1886.24N	1635.07E	==>	2009.47	40.59557187	-104.70115391
12373.00	90.23	91.23	7322.80	1884.09N	1735.05E	==>	2106.53	40.59556350	-104.70079400
12473.00	90.23	91.23	7322.40	1881.95N	1835.02E	==>	2203.59	40.59555514	-104.70043409
12573.00	90.23	91.23	7321.99	1879.80N	1935.00E	==>	2300.66	40.59554678	-104.70007418
12673.00	90.23	91.23	7321.58	1877.65N	2034.97E	==>	2397.72	40.59553842	-104.69971427
12773.00	90.23	91.23	7321.17	1875.51N	2134.95E	==>	2494.78	40.59553005	-104.69935436
12873.00	90.23	91.23	7320.76	1873.36N	2234.93E	==>	2591.85	40.59552168	-104.69899444
12973.00	90.23	91.23	7320.35	1871.22N	2334.90E	==>	2688.91	40.59551332	-104.69863453
13073.00	90.23	91.23	7319.94	1869.07N	2434.88E	==>	2785.97	40.59550495	-104.69827462
13173.00	90.23	91.23	7319.53	1866.93N	2534.86E	==>	2883.03	40.59549658	-104.69791471
13273.00	90.23	91.23	7319.12	1864.78N	2634.83E	==>	2980.10	40.59548821	-104.69755480
13373.00	90.23	91.23	7318.71	1862.64N	2734.81E	==>	3077.16	40.59547983	-104.69719489
13473.00	90.23	91.23	7318.30	1860.49N	2834.78E	==>	3174.22	40.59547146	-104.69683498
13573.00	90.23	91.23	7317.89	1858.35N	2934.76E	==>	3271.29	40.59546309	-104.69647507
13673.00	90.23	91.23	7317.48	1856.20N	3034.74E	==>	3368.35	40.59545471	-104.69611516
13773.00	90.23	91.23	7317.07	1854.06N	3134.71E	==>	3465.41	40.59544633	-104.69575525
13873.00	90.23	91.23	7316.66	1851.91N	3234.69E	==>	3562.48	40.59543796	-104.69539533
13973.00	90.23	91.23	7316.25	1849.77N	3334.66E	==>	3659.54	40.59542958	-104.69503542
14073.00	90.23	91.23	7315.84	1847.62N	3434.64E	==>	3756.60	40.59542120	-104.69467551
14173.00	90.23	91.23	7315.43	1845.47N	3534.62E	==>	3853.67	40.59541282	-104.69431560
14273.00	90.23	91.23	7315.02	1843.33N	3634.59E	==>	3950.73	40.59540444	-104.69395569
14373.00	90.23	91.23	7314.61	1841.18N	3734.57E	==>	4047.79	40.59539605	-104.69359578

All data is in Feet unless otherwise stated
Coordinates are from Slot MD's are from Rig and TVD's are from Rig (Planned Datum #1 4948.0ft above Mean Sea Level)
Vertical Section is from 0.00N 0.00E on azimuth 77.31 degrees
Bottom hole distance is 7985.73 Feet on azimuth 77.31 degrees from Wellhead
Calculation method uses Minimum Curvature method
Prepared by
Date Printed: 28-Sep-2021

SYS DRILL
Well Design Combined Report
Wellbore: Ruby East 2 (PWB)



Interpolated Wellpath									
MD[ft]	Inc[deg]	Azi[deg]	TVD[ft]	North[ft]	East[ft]	Dogleg [deg/100ft]	Vertical Section[ft]	Station Position (Latitude)	Station Position (Longitude)
14473.00	90.23	91.23	7314.20	1839.04N	3834.54E	==>	4144.86	40.59538767	-104.69323587
14573.00	90.23	91.23	7313.80	1836.89N	3934.52E	==>	4241.92	40.59537928	-104.69287596
14673.00	90.23	91.23	7313.39	1834.75N	4034.50E	==>	4338.98	40.59537090	-104.69251605
14773.00	90.23	91.23	7312.98	1832.60N	4134.47E	==>	4436.04	40.59536251	-104.69215614
14873.00	90.23	91.23	7312.57	1830.46N	4234.45E	==>	4533.11	40.59535412	-104.69179624
14973.00	90.23	91.23	7312.16	1828.31N	4334.43E	==>	4630.17	40.59534573	-104.69143633
15073.00	90.23	91.23	7311.75	1826.17N	4434.40E	==>	4727.23	40.59533734	-104.69107642
15173.00	90.23	91.23	7311.34	1824.02N	4534.38E	==>	4824.30	40.59532895	-104.69071651
15273.00	90.23	91.23	7310.93	1821.88N	4634.35E	==>	4921.36	40.59532055	-104.69035660
15373.00	90.23	91.23	7310.52	1819.73N	4734.33E	==>	5018.42	40.59531216	-104.68999669
15473.00	90.23	91.23	7310.11	1817.59N	4834.31E	==>	5115.49	40.59530376	-104.68963678
15573.00	90.23	91.23	7309.70	1815.44N	4934.28E	==>	5212.55	40.59529537	-104.68927687
15673.00	90.23	91.23	7309.29	1813.30N	5034.26E	==>	5309.61	40.59528697	-104.68891696
15773.00	90.23	91.23	7308.88	1811.15N	5134.23E	==>	5406.68	40.59527857	-104.68855705
15873.00	90.23	91.23	7308.47	1809.00N	5234.21E	==>	5503.74	40.59527017	-104.68819714
15973.00	90.23	91.23	7308.06	1806.86N	5334.19E	==>	5600.80	40.59526177	-104.68783724
16073.00	90.23	91.23	7307.65	1804.71N	5434.16E	==>	5697.87	40.59525337	-104.68747733
16173.00	90.23	91.23	7307.24	1802.57N	5534.14E	==>	5794.93	40.59524496	-104.68711742
16273.00	90.23	91.23	7306.83	1800.42N	5634.12E	==>	5891.99	40.59523656	-104.68675751
16373.00	90.23	91.23	7306.42	1798.28N	5734.09E	==>	5989.05	40.59522815	-104.68639760
16473.00	90.23	91.23	7306.01	1796.13N	5834.07E	==>	6086.12	40.59521975	-104.68603769
16573.00	90.23	91.23	7305.61	1793.99N	5934.04E	==>	6183.18	40.59521134	-104.68567779
16673.00	90.23	91.23	7305.20	1791.84N	6034.02E	==>	6280.24	40.59520293	-104.68531788
16773.00	90.23	91.23	7304.79	1789.70N	6134.00E	==>	6377.31	40.59519452	-104.68495797
16873.00	90.23	91.23	7304.38	1787.55N	6233.97E	==>	6474.37	40.59518611	-104.68459806
16973.00	90.23	91.23	7303.97	1785.41N	6333.95E	==>	6571.43	40.59517770	-104.68423815
17073.00	90.23	91.23	7303.56	1783.26N	6433.92E	==>	6668.50	40.59516929	-104.68387825
17173.00	90.23	91.23	7303.15	1781.12N	6533.90E	==>	6765.56	40.59516087	-104.68351834
17273.00	90.23	91.23	7302.74	1778.97N	6633.88E	==>	6862.62	40.59515246	-104.68315843
17373.00	90.23	91.23	7302.33	1776.82N	6733.85E	==>	6959.69	40.59514404	-104.68279852
17473.00	90.23	91.23	7301.92	1774.68N	6833.83E	==>	7056.75	40.59513562	-104.68243862
17573.00	90.23	91.23	7301.51	1772.53N	6933.81E	==>	7153.81	40.59512720	-104.68207871
17673.00	90.23	91.23	7301.10	1770.39N	7033.78E	==>	7250.88	40.59511878	-104.68171880
17773.00	90.23	91.23	7300.69	1768.24N	7133.76E	==>	7347.94	40.59511036	-104.68135890
17873.00	90.23	91.23	7300.28	1766.10N	7233.73E	==>	7445.00	40.59510194	-104.68099899
17973.00	90.23	91.23	7299.87	1763.95N	7333.71E	==>	7542.06	40.59509352	-104.68063908
18073.00	90.23	91.23	7299.46	1761.81N	7433.69E	==>	7639.13	40.59508509	-104.68027918
18173.00	90.23	91.23	7299.05	1759.66N	7533.66E	==>	7736.19	40.59507667	-104.67991927
18273.00	90.23	91.23	7298.64	1757.52N	7633.64E	==>	7833.25	40.59506824	-104.67955936
18373.00	90.23	91.23	7298.23	1755.37N	7733.61E	==>	7930.32	40.59505981	-104.67919946
18430.09	90.23	91.23	7298.00	1754.15N	7790.69E	==>	7985.73	40.59505500	-104.67899400

All data is in Feet unless otherwise stated
Coordinates are from Slot MD's are from Rig and TVD's are from Rig (Planned Datum #1 4948.0ft above Mean Sea Level)
Vertical Section is from 0.00N 0.00E on azimuth 77.31 degrees
Bottom hole distance is 7985.73 Feet on azimuth 77.31 degrees from Wellhead
Calculation method uses Minimum Curvature method
Prepared by
Date Printed: 28-Sep-2021



Targets							
Name	North[ft]	East[ft]	TVD[ft]	Latitude	Longitude	Northing	Easting
Ruby East 2 - LP	1963.70N	1974.68W	7338.00	40.59587300	-104.71414900	1460884.99	3218232.40
Ruby East 2 - BHL	1754.15N	7790.69E	7298.00	40.59505500	-104.67899400	1460675.45	3227997.50

Survey Tool Program						
Reference	Survey Name	MD[ft]	TVD[ft]	Survey Tool	Error Model	
1026269	Planned	1573.00	1573.00	WdW Rate Gyro	Standard	
1026268	Planned	18430.09	7298.00	ISWWSA MWD	Rev 4 + SAG + FLT	

Notes