

# BAYSWATER E&P, LLC

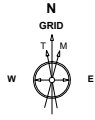
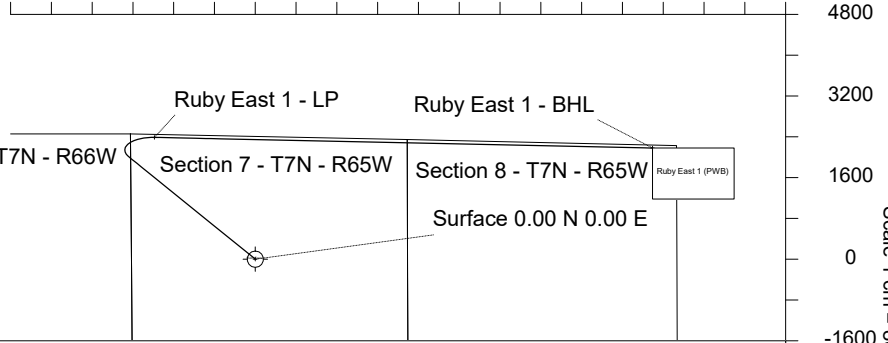
<b>Location</b>	Weld County, CO	<b>Slot</b>	Ruby East 1
<b>Field</b>	WATTENBERG	<b>Well</b>	Ruby East 1
<b>Installation</b>	Ruby 7-J Pad	<b>Wellbore</b>	Ruby East 1 (PWB)

Created by sean.dolfinger  
 Date plotted 28-Sep-2021  
 Plot reference is Ruby East 1 (PWB).  
 Ref wellpath is Ruby East 1 (PWP#1).  
 Coordinates are in Feet reference Ruby East 1.  
 True Vertical Depths are reference Rig Datum.  
 Measured Depths are reference Rig Datum.  
 Rig Datum: Planned Datum #1  
 Rig Datum to Mean Sea Level: 4948.00 ft.  
 Plot North is aligned to GRID North.

Scale 1 cm = 800 ft

East (Feet) ->

-4800 -3200 -1600 0 1600 3200 4800 6400 8000 9600



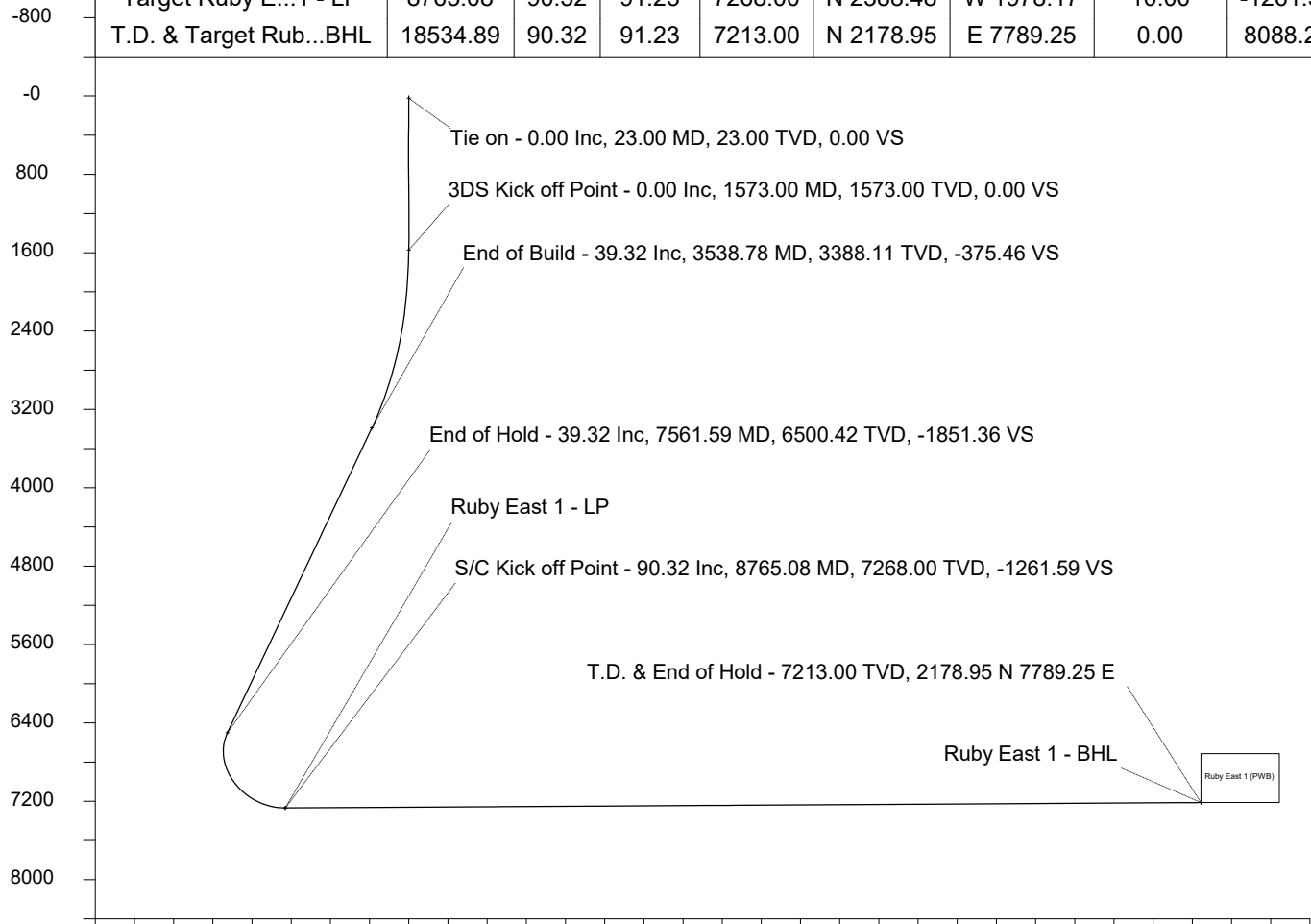
Sep-27-2021  
 EMM-2017 Dip: 66.82 deg Field: 51949.2 nT  
 Lat: N40.35 22.7508 Long: W104.42 25.5996 Elev: 4923.00 ft  
 Magnetic North is 7.23 deg East of True North  
 GRID North is 0.51 deg East of True North  
 To correct azimuth from True to GRID subtract 0.51 deg  
 To correct azimuth from Magnetic to GRID add 7.32 deg

## WELL PROFILE DATA

Point	MD	Inc	Azi	TVD	North	East	deg/100ft	V. Sect
Tie on	23.00	0.00	0.00	23.00	S 0.00	W 0.00		0.00
KOP	1573.00	0.00	308.99	1573.00	S 0.00	W 0.00	0.00	0.00
End of Build	3538.78	39.32	308.99	3388.11	N 407.94	W 503.99	2.00	-375.46
End of Hold	7561.59	39.32	308.99	6500.42	N 2011.53	W 2485.14	0.00	-1851.36
Target Ruby E...1 - LP	8765.08	90.32	91.23	7268.00	N 2388.48	W 1978.17	10.00	-1261.59
T.D. & Target Rub...BHL	18534.89	90.32	91.23	7213.00	N 2178.95	E 7789.25	0.00	8088.28

Scale 1 cm = 400 ft

<- True Vertical Depth (Feet)



-3200 -2400 -1600 -800 0 800 1600 2400 3200 4000 4800 5600 6400 7200 8000 8800

Scale 1 cm = 400 ft

Vertical Section (Feet) ->

Azimuth 74.37 with reference 0.00 N, 0.00 E from Ruby East 1

SYSDRILL  
Well Design Combined Report  
Wellbore: Ruby East 1 (PWB)



Wellhead Details							
Name	Latitude	Longitude	Northing	Easting	North	East	Slot Elevation Above Ground
Ruby East 1	40.59047700	-104.70710200	1458936.6539	3220206.8944	300.21N	0.18W	0.00

Declination		
Date	Source	Time
Sep-27-2021	EMM-2017	13:43

Installation Details						
Name	Installation Position (Latitude)	Installation Position (Longitude)	Northing	Easting	Coord System Name	North Alignment
Ruby 7-J Pad	40.58965300	-104.70711100	1458636.4488	3220207.0791	NAD83 Colorado State Planes, North Zone, US Foot	Grid

Summary Wellpath								
MD[ft]	Inc[deg]	Azi[deg]	TVD[ft]	Vertical Depth SS	North[ft]	East[ft]	Dogleg [deg/100ft]	Vertical Section[ft]
23.00	0.00	0.00	23.00	-4925.00	0.00N	0.00E		0.00
1573.00	0.00	308.99	1573.00	-3375.00	0.00N	0.00E	==>	0.00
3538.78	39.32	308.99	3388.11	-1559.89	407.94N	503.99W	2.00	-375.46
7561.59	39.32	308.99	6500.42	1552.42	2011.53N	2485.14W	==>	-1851.36
8765.08	90.32	91.23	7268.00	2320.00	2388.48N	1978.17W	10.00	-1261.59
18534.89	90.32	91.23	7213.00	2265.00	2178.95N	7789.25E	==>	8088.28

Interpolated Wellpath									
MD[ft]	Inc[deg]	Azi[deg]	TVD[ft]	North[ft]	East[ft]	Dogleg [deg/100ft]	Vertical Section[ft]	Station Position (Latitude)	Station Position (Longitude)
0.00	0.00	0.00	0.00	0.00N	0.00E		0.00	40.59047700	-104.70710200
23.00	0.00	0.00	23.00	0.00N	0.00E	==>	0.00	40.59047700	-104.70710200
100.00	0.00	0.00	100.00	0.00N	0.00E	==>	0.00	40.59047700	-104.70710200
200.00	0.00	0.00	200.00	0.00N	0.00E	==>	0.00	40.59047700	-104.70710200
300.00	0.00	0.00	300.00	0.00N	0.00E	==>	0.00	40.59047700	-104.70710200
400.00	0.00	0.00	400.00	0.00N	0.00E	==>	0.00	40.59047700	-104.70710200
500.00	0.00	0.00	500.00	0.00N	0.00E	==>	0.00	40.59047700	-104.70710200
600.00	0.00	0.00	600.00	0.00N	0.00E	==>	0.00	40.59047700	-104.70710200
700.00	0.00	0.00	700.00	0.00N	0.00E	==>	0.00	40.59047700	-104.70710200
800.00	0.00	0.00	800.00	0.00N	0.00E	==>	0.00	40.59047700	-104.70710200
900.00	0.00	0.00	900.00	0.00N	0.00E	==>	0.00	40.59047700	-104.70710200
1000.00	0.00	0.00	1000.00	0.00N	0.00E	==>	0.00	40.59047700	-104.70710200
1100.00	0.00	0.00	1100.00	0.00N	0.00E	==>	0.00	40.59047700	-104.70710200
1200.00	0.00	0.00	1200.00	0.00N	0.00E	==>	0.00	40.59047700	-104.70710200
1300.00	0.00	0.00	1300.00	0.00N	0.00E	==>	0.00	40.59047700	-104.70710200
1400.00	0.00	0.00	1400.00	0.00N	0.00E	==>	0.00	40.59047700	-104.70710200
1500.00	0.00	0.00	1500.00	0.00N	0.00E	==>	0.00	40.59047700	-104.70710200
1573.00	0.00	308.99	1573.00	0.00N	0.00E	==>	0.00	40.59047700	-104.70710200
1673.00	2.00	308.99	1672.98	1.10N	1.36W	2.00	-1.01	40.59048005	-104.70710685
1773.00	4.00	308.99	1772.84	4.39N	5.42W	2.00	-4.04	40.59048918	-104.70712139
1873.00	6.00	308.99	1872.45	9.87N	12.20W	2.00	-9.09	40.59050440	-104.70714560
1973.00	8.00	308.99	1971.70	17.54N	21.67W	2.00	-16.14	40.59052568	-104.70717946
2073.00	10.00	308.99	2070.47	27.38N	33.83W	2.00	-25.20	40.59055299	-104.70722292
2173.00	12.00	308.99	2168.62	39.39N	48.66W	2.00	-36.25	40.59058630	-104.70727593
2273.00	14.00	308.99	2266.06	53.54N	66.14W	2.00	-49.28	40.59062557	-104.70733842
2373.00	16.00	308.99	2362.64	69.82N	86.26W	2.00	-64.26	40.59067076	-104.70741033
2473.00	18.00	308.99	2458.27	88.21N	108.99W	2.00	-81.19	40.59072180	-104.70749155
2573.00	20.00	308.99	2552.82	108.70N	134.29W	2.00	-100.04	40.59077864	-104.70758200
2673.00	22.00	308.99	2646.17	131.24N	162.14W	2.00	-120.79	40.59084120	-104.70768156
2773.00	24.00	308.99	2738.21	155.82N	192.51W	2.00	-143.42	40.59090941	-104.70779011
2873.00	26.00	308.99	2828.84	182.41N	225.36W	2.00	-167.89	40.59098319	-104.70790752
2973.00	28.00	308.99	2917.94	210.97N	260.65W	2.00	-194.17	40.59106245	-104.70803365

All data is in Feet unless otherwise stated  
Coordinates are from Slot MD's are from Rig and TVD's are from Rig ( Planned Datum #1 4948.0ft above Mean Sea Level )  
Vertical Section is from 0.00N 0.00E on azimuth 74.37 degrees  
Bottom hole distance is 8088.28 Feet on azimuth 74.37 degrees from Wellhead  
Calculation method uses Minimum Curvature method  
Prepared by  
Date Printed: 28-Sep-2021

SYSDRILL  
Well Design Combined Report  
Wellbore: Ruby East 1 (PWB)



Interpolated Wellpath									
MD[ft]	Inc[deg]	Azi[deg]	TVD[ft]	North[ft]	East[ft]	Dogleg [deg/100ft]	Vertical Section[ft]	Station Position (Latitude)	Station Position (Longitude)
3073.00	30.00	308.99	3005.39	241.47N	298.33W	2.00	-222.25	40.59114709	-104.70816834
3173.00	32.00	308.99	3091.11	273.88N	338.36W	2.00	-252.07	40.59123700	-104.70831143
3273.00	34.00	308.99	3174.97	308.14N	380.69W	2.00	-283.60	40.59133209	-104.70846274
3373.00	36.00	308.99	3256.88	344.22N	425.27W	2.00	-316.82	40.59143222	-104.70862209
3473.00	38.00	308.99	3336.74	382.09N	472.05W	2.00	-351.66	40.59153728	-104.70878929
3538.78	39.32	308.99	3388.11	407.94N	503.99W	2.00	-375.46	40.59160903	-104.70890346
3573.00	39.32	308.99	3414.58	421.58N	520.84W	==>	-388.01	40.59164687	-104.70896369
3673.00	39.32	308.99	3491.95	461.44N	570.09W	==>	-424.70	40.59175749	-104.70913973
3773.00	39.32	308.99	3569.31	501.30N	619.33W	==>	-461.39	40.59186811	-104.70931576
3873.00	39.32	308.99	3646.68	541.17N	668.58W	==>	-498.08	40.59197872	-104.70949180
3973.00	39.32	308.99	3724.05	581.03N	717.83W	==>	-534.77	40.59208934	-104.70966784
4073.00	39.32	308.99	3801.41	620.89N	767.08W	==>	-571.45	40.59219995	-104.70984388
4173.00	39.32	308.99	3878.78	660.75N	816.33W	==>	-608.14	40.59231057	-104.71001991
4273.00	39.32	308.99	3956.15	700.62N	865.58W	==>	-644.83	40.59242118	-104.71019595
4373.00	39.32	308.99	4033.51	740.48N	914.82W	==>	-681.52	40.59253180	-104.71037199
4473.00	39.32	308.99	4110.88	780.34N	964.07W	==>	-718.21	40.59264241	-104.71054804
4573.00	39.32	308.99	4188.25	820.20N	1013.32W	==>	-754.90	40.59275302	-104.71072408
4673.00	39.32	308.99	4265.61	860.07N	1062.57W	==>	-791.59	40.59286364	-104.71090012
4773.00	39.32	308.99	4342.98	899.93N	1111.82W	==>	-828.27	40.59297425	-104.71107616
4873.00	39.32	308.99	4420.35	939.79N	1161.06W	==>	-864.96	40.59308486	-104.71125220
4973.00	39.32	308.99	4497.71	979.65N	1210.31W	==>	-901.65	40.59319548	-104.71142825
5073.00	39.32	308.99	4575.08	1019.52N	1259.56W	==>	-938.34	40.59330609	-104.71160429
5173.00	39.32	308.99	4652.45	1059.38N	1308.81W	==>	-975.03	40.59341670	-104.71178034
5273.00	39.32	308.99	4729.81	1099.24N	1358.06W	==>	-1011.72	40.59352731	-104.71195638
5373.00	39.32	308.99	4807.18	1139.10N	1407.30W	==>	-1048.40	40.59363793	-104.71213243
5473.00	39.32	308.99	4884.55	1178.97N	1456.55W	==>	-1085.09	40.59374854	-104.71230847
5573.00	39.32	308.99	4961.91	1218.83N	1505.80W	==>	-1121.78	40.59385915	-104.71248452
5673.00	39.32	308.99	5039.28	1258.69N	1555.05W	==>	-1158.47	40.59396976	-104.71266057
5773.00	39.32	308.99	5116.65	1298.55N	1604.30W	==>	-1195.16	40.59408037	-104.71283662
5873.00	39.32	308.99	5194.01	1338.42N	1653.54W	==>	-1231.85	40.59419098	-104.71301267
5973.00	39.32	308.99	5271.38	1378.28N	1702.79W	==>	-1268.54	40.59430159	-104.71318871
6073.00	39.32	308.99	5348.75	1418.14N	1752.04W	==>	-1305.22	40.59441220	-104.71336476
6173.00	39.32	308.99	5426.11	1458.00N	1801.29W	==>	-1341.91	40.59452281	-104.71354082
6273.00	39.32	308.99	5503.48	1497.87N	1850.54W	==>	-1378.60	40.59463342	-104.71371687
6373.00	39.32	308.99	5580.85	1537.73N	1899.79W	==>	-1415.29	40.59474403	-104.71389292
6473.00	39.32	308.99	5658.21	1577.59N	1949.03W	==>	-1451.98	40.59485464	-104.71406897
6573.00	39.32	308.99	5735.58	1617.45N	1998.28W	==>	-1488.67	40.59496525	-104.71424502
6673.00	39.32	308.99	5812.95	1657.32N	2047.53W	==>	-1525.36	40.59507585	-104.71442108
6773.00	39.32	308.99	5890.32	1697.18N	2096.78W	==>	-1562.04	40.59518646	-104.71459713
6873.00	39.32	308.99	5967.68	1737.04N	2146.03W	==>	-1598.73	40.59529707	-104.71477318
6973.00	39.32	308.99	6045.05	1776.90N	2195.27W	==>	-1635.42	40.59540768	-104.71494924
7073.00	39.32	308.99	6122.42	1816.77N	2244.52W	==>	-1672.11	40.59551828	-104.71512530
7173.00	39.32	308.99	6199.78	1856.63N	2293.77W	==>	-1708.80	40.59562889	-104.71530135
7273.00	39.32	308.99	6277.15	1896.49N	2343.02W	==>	-1745.49	40.59573950	-104.71547741
7373.00	39.32	308.99	6354.52	1936.35N	2392.27W	==>	-1782.18	40.59585010	-104.71565347
7473.00	39.32	308.99	6431.88	1976.22N	2441.51W	==>	-1818.86	40.59596071	-104.71582952
7561.59	39.32	308.99	6500.42	2011.53N	2485.14W	==>	-1851.36	40.59605869	-104.71598549
7573.00	38.52	310.29	6509.30	2016.10N	2490.66W	10.00	-1855.45	40.59607138	-104.71600522
7673.00	32.29	323.86	6590.89	2057.91N	2530.27W	10.00	-1882.33	40.59618710	-104.71614650
7773.00	28.04	341.97	6677.51	2101.95N	2553.36W	10.00	-1892.70	40.59630852	-104.71622823
7873.00	26.74	3.63	6766.52	2146.86N	2559.22W	10.00	-1886.25	40.59643194	-104.71624791
7973.00	28.79	24.75	6855.22	2191.30N	2547.68W	10.00	-1863.17	40.59655362	-104.71620497
8073.00	33.59	41.78	6940.91	2233.90N	2519.10W	10.00	-1824.16	40.59666986	-104.71610069
8173.00	40.14	54.43	7020.99	2273.38N	2474.34W	10.00	-1770.42	40.59677712	-104.71593824
8273.00	47.73	63.85	7093.02	2308.53N	2414.75W	10.00	-1703.57	40.59687215	-104.71572257
8373.00	55.93	71.16	7154.82	2338.29N	2342.16W	10.00	-1625.64	40.59695207	-104.71546023
8473.00	64.47	77.16	7204.51	2361.75N	2258.76W	10.00	-1539.00	40.59701443	-104.71515918
8573.00	73.23	82.34	7240.57	2378.19N	2167.09W	10.00	-1446.29	40.59705735	-104.71482858

All data is in Feet unless otherwise stated  
Coordinates are from Slot MD's are from Rig and TVD's are from Rig ( Planned Datum #1 4948.0ft above Mean Sea Level )  
Vertical Section is from 0.00N 0.00E on azimuth 74.37 degrees  
Bottom hole distance is 8088.28 Feet on azimuth 74.37 degrees from Wellhead  
Calculation method uses Minimum Curvature method  
Prepared by  
Date Printed: 28-Sep-2021

SYSDRILL  
Well Design Combined Report  
Wellbore: Ruby East 1 (PWB)



Interpolated Wellpath									
MD[ft]	Inc[deg]	Azi[deg]	TVD[ft]	North[ft]	East[ft]	Dogleg [deg/100ft]	Vertical Section[ft]	Station Position (Latitude)	Station Position (Longitude)
8673.00	82.10	87.06	7261.92	2387.13N	2069.93W	10.00	-1350.32	40.59707952	-104.71447847
8765.08	90.32	91.23	7268.00	2388.48N	1978.17W	10.00	-1261.59	40.59708100	-104.71414800
8773.00	90.32	91.23	7267.96	2388.31N	1970.25W	==>	-1254.00	40.59708034	-104.71411948
8873.00	90.32	91.23	7267.39	2386.17N	1870.27W	==>	-1158.30	40.59707202	-104.71375956
8973.00	90.32	91.23	7266.83	2384.02N	1770.29W	==>	-1062.60	40.59706370	-104.71339964
9073.00	90.32	91.23	7266.27	2381.88N	1670.32W	==>	-966.90	40.59705538	-104.71303972
9173.00	90.32	91.23	7265.70	2379.74N	1570.34W	==>	-871.19	40.59704706	-104.71267980
9273.00	90.32	91.23	7265.14	2377.59N	1470.37W	==>	-775.49	40.59703873	-104.71231988
9373.00	90.32	91.23	7264.58	2375.45N	1370.39W	==>	-679.79	40.59703041	-104.71195996
9473.00	90.32	91.23	7264.01	2373.30N	1270.42W	==>	-584.09	40.59702208	-104.71160005
9573.00	90.32	91.23	7263.45	2371.16N	1170.44W	==>	-488.39	40.59701376	-104.71124013
9673.00	90.32	91.23	7262.89	2369.01N	1070.47W	==>	-392.69	40.59700543	-104.71088021
9773.00	90.32	91.23	7262.33	2366.87N	970.49W	==>	-296.99	40.59699710	-104.71052029
9873.00	90.32	91.23	7261.76	2364.72N	870.52W	==>	-201.28	40.59698877	-104.71016037
9973.00	90.32	91.23	7261.20	2362.58N	770.54W	==>	-105.58	40.59698044	-104.70980046
10073.00	90.32	91.23	7260.64	2360.43N	670.57W	==>	-9.88	40.59697211	-104.70944054
10173.00	90.32	91.23	7260.07	2358.29N	570.59W	==>	85.82	40.59696377	-104.70908062
10273.00	90.32	91.23	7259.51	2356.14N	470.61W	==>	181.52	40.59695544	-104.70872070
10373.00	90.32	91.23	7258.95	2354.00N	370.64W	==>	277.22	40.59694710	-104.70836079
10473.00	90.32	91.23	7258.39	2351.85N	270.66W	==>	372.92	40.59693877	-104.70800087
10573.00	90.32	91.23	7257.82	2349.71N	170.69W	==>	468.63	40.59693043	-104.70764095
10673.00	90.32	91.23	7257.26	2347.57N	70.71W	==>	564.33	40.59692209	-104.70728103
10773.00	90.32	91.23	7256.70	2345.42N	29.26E	==>	660.03	40.59691375	-104.70692112
10873.00	90.32	91.23	7256.13	2343.28N	129.24E	==>	755.73	40.59690541	-104.70656120
10973.00	90.32	91.23	7255.57	2341.13N	229.21E	==>	851.43	40.59689707	-104.70620128
11073.00	90.32	91.23	7255.01	2338.99N	329.19E	==>	947.13	40.59688872	-104.70584137
11173.00	90.32	91.23	7254.44	2336.84N	429.16E	==>	1042.83	40.59688038	-104.70548145
11273.00	90.32	91.23	7253.88	2334.70N	529.14E	==>	1138.54	40.59687203	-104.70512153
11373.00	90.32	91.23	7253.32	2332.55N	629.11E	==>	1234.24	40.59686369	-104.70476162
11473.00	90.32	91.23	7252.76	2330.41N	729.09E	==>	1329.94	40.59685534	-104.70440170
11573.00	90.32	91.23	7252.19	2328.26N	829.07E	==>	1425.64	40.59684699	-104.70404178
11673.00	90.32	91.23	7251.63	2326.12N	929.04E	==>	1521.34	40.59683864	-104.70368187
11773.00	90.32	91.23	7251.07	2323.97N	1029.02E	==>	1617.04	40.59683029	-104.70332195
11873.00	90.32	91.23	7250.50	2321.83N	1128.99E	==>	1712.75	40.59682193	-104.70296203
11973.00	90.32	91.23	7249.94	2319.68N	1228.97E	==>	1808.45	40.59681358	-104.70260212
12073.00	90.32	91.23	7249.38	2317.54N	1328.94E	==>	1904.15	40.59680523	-104.70224220
12173.00	90.32	91.23	7248.81	2315.40N	1428.92E	==>	1999.85	40.59679687	-104.70188229
12273.00	90.32	91.23	7248.25	2313.25N	1528.89E	==>	2095.55	40.59678851	-104.70152237
12373.00	90.32	91.23	7247.69	2311.11N	1628.87E	==>	2191.25	40.59678016	-104.70116245
12473.00	90.32	91.23	7247.13	2308.96N	1728.84E	==>	2286.95	40.59677180	-104.70080254
12573.00	90.32	91.23	7246.56	2306.82N	1828.82E	==>	2382.66	40.59676344	-104.70044262
12673.00	90.32	91.23	7246.00	2304.67N	1928.80E	==>	2478.36	40.59675508	-104.70008271
12773.00	90.32	91.23	7245.44	2302.53N	2028.77E	==>	2574.06	40.59674671	-104.69972279
12873.00	90.32	91.23	7244.87	2300.38N	2128.75E	==>	2669.76	40.59673835	-104.69936288
12973.00	90.32	91.23	7244.31	2298.24N	2228.72E	==>	2765.46	40.59672999	-104.69900296
13073.00	90.32	91.23	7243.75	2296.09N	2328.70E	==>	2861.16	40.59672162	-104.69864305
13173.00	90.32	91.23	7243.19	2293.95N	2428.67E	==>	2956.86	40.59671325	-104.69828313
13273.00	90.32	91.23	7242.62	2291.80N	2528.65E	==>	3052.57	40.59670488	-104.69792322
13373.00	90.32	91.23	7242.06	2289.66N	2628.62E	==>	3148.27	40.59669652	-104.69756330
13473.00	90.32	91.23	7241.50	2287.51N	2728.60E	==>	3243.97	40.59668815	-104.69720339
13573.00	90.32	91.23	7240.93	2285.37N	2828.57E	==>	3339.67	40.59667977	-104.69684347
13673.00	90.32	91.23	7240.37	2283.23N	2928.55E	==>	3435.37	40.59667140	-104.69648356
13773.00	90.32	91.23	7239.81	2281.08N	3028.52E	==>	3531.07	40.59666303	-104.69612364
13873.00	90.32	91.23	7239.24	2278.94N	3128.50E	==>	3626.78	40.59665465	-104.69576373
13973.00	90.32	91.23	7238.68	2276.79N	3228.48E	==>	3722.48	40.59664628	-104.69540381
14073.00	90.32	91.23	7238.12	2274.65N	3328.45E	==>	3818.18	40.59663790	-104.69504390
14173.00	90.32	91.23	7237.56	2272.50N	3428.43E	==>	3913.88	40.59662952	-104.69468399
14273.00	90.32	91.23	7236.99	2270.36N	3528.40E	==>	4009.58	40.59662114	-104.69432407
14373.00	90.32	91.23	7236.43	2268.21N	3628.38E	==>	4105.28	40.59661276	-104.69396416

All data is in Feet unless otherwise stated  
Coordinates are from Slot MD's are from Rig and TVD's are from Rig ( Planned Datum #1 4948.0ft above Mean Sea Level )  
Vertical Section is from 0.00N 0.00E on azimuth 74.37 degrees  
Bottom hole distance is 8088.28 Feet on azimuth 74.37 degrees from Wellhead  
Calculation method uses Minimum Curvature method  
Prepared by  
Date Printed: 28-Sep-2021

SYS DRILL  
Well Design Combined Report  
Wellbore: Ruby East 1 (PWB)



Interpolated Wellpath									
MD[ft]	Inc[deg]	Azi[deg]	TVD[ft]	North[ft]	East[ft]	Dogleg [deg/100ft]	Vertical Section[ft]	Station Position (Latitude)	Station Position (Longitude)
14473.00	90.32	91.23	7235.87	2266.07N	3728.35E	==>	4200.98	40.59660438	-104.69360424
14573.00	90.32	91.23	7235.30	2263.92N	3828.33E	==>	4296.69	40.59659600	-104.69324433
14673.00	90.32	91.23	7234.74	2261.78N	3928.30E	==>	4392.39	40.59658762	-104.69288442
14773.00	90.32	91.23	7234.18	2259.63N	4028.28E	==>	4488.09	40.59657923	-104.69252450
14873.00	90.32	91.23	7233.61	2257.49N	4128.25E	==>	4583.79	40.59657085	-104.69216459
14973.00	90.32	91.23	7233.05	2255.34N	4228.23E	==>	4679.49	40.59656246	-104.69180468
15073.00	90.32	91.23	7232.49	2253.20N	4328.21E	==>	4775.19	40.59655407	-104.69144476
15173.00	90.32	91.23	7231.93	2251.06N	4428.18E	==>	4870.89	40.59654568	-104.69108485
15273.00	90.32	91.23	7231.36	2248.91N	4528.16E	==>	4966.60	40.59653729	-104.69072494
15373.00	90.32	91.23	7230.80	2246.77N	4628.13E	==>	5062.30	40.59652890	-104.69036502
15473.00	90.32	91.23	7230.24	2244.62N	4728.11E	==>	5158.00	40.59652051	-104.69000511
15573.00	90.32	91.23	7229.67	2242.48N	4828.08E	==>	5253.70	40.59651211	-104.68964520
15673.00	90.32	91.23	7229.11	2240.33N	4928.06E	==>	5349.40	40.59650372	-104.68928528
15773.00	90.32	91.23	7228.55	2238.19N	5028.03E	==>	5445.10	40.59649532	-104.68892537
15873.00	90.32	91.23	7227.99	2236.04N	5128.01E	==>	5540.80	40.59648693	-104.68856546
15973.00	90.32	91.23	7227.42	2233.90N	5227.98E	==>	5636.51	40.59647853	-104.68820555
16073.00	90.32	91.23	7226.86	2231.75N	5327.96E	==>	5732.21	40.59647013	-104.68784563
16173.00	90.32	91.23	7226.30	2229.61N	5427.93E	==>	5827.91	40.59646173	-104.68748572
16273.00	90.32	91.23	7225.73	2227.46N	5527.91E	==>	5923.61	40.59645333	-104.68712581
16373.00	90.32	91.23	7225.17	2225.32N	5627.89E	==>	6019.31	40.59644493	-104.68676590
16473.00	90.32	91.23	7224.61	2223.17N	5727.86E	==>	6115.01	40.59643652	-104.68640599
16573.00	90.32	91.23	7224.04	2221.03N	5827.84E	==>	6210.72	40.59642812	-104.68604607
16673.00	90.32	91.23	7223.48	2218.89N	5927.81E	==>	6306.42	40.59641971	-104.68568616
16773.00	90.32	91.23	7222.92	2216.74N	6027.79E	==>	6402.12	40.59641130	-104.68532625
16873.00	90.32	91.23	7222.36	2214.60N	6127.76E	==>	6497.82	40.59640290	-104.68496634
16973.00	90.32	91.23	7221.79	2212.45N	6227.74E	==>	6593.52	40.59639449	-104.68460643
17073.00	90.32	91.23	7221.23	2210.31N	6327.71E	==>	6689.22	40.59638608	-104.68424652
17173.00	90.32	91.23	7220.67	2208.16N	6427.69E	==>	6784.92	40.59637767	-104.68388660
17273.00	90.32	91.23	7220.10	2206.02N	6527.66E	==>	6880.63	40.59636925	-104.68352669
17373.00	90.32	91.23	7219.54	2203.87N	6627.64E	==>	6976.33	40.59636084	-104.68316678
17473.00	90.32	91.23	7218.98	2201.73N	6727.62E	==>	7072.03	40.59635242	-104.68280687
17573.00	90.32	91.23	7218.42	2199.58N	6827.59E	==>	7167.73	40.59634401	-104.68244696
17673.00	90.32	91.23	7217.85	2197.44N	6927.57E	==>	7263.43	40.59633559	-104.68208705
17773.00	90.32	91.23	7217.29	2195.29N	7027.54E	==>	7359.13	40.59632717	-104.68172714
17873.00	90.32	91.23	7216.73	2193.15N	7127.52E	==>	7454.83	40.59631875	-104.68136723
17973.00	90.32	91.23	7216.16	2191.00N	7227.49E	==>	7550.54	40.59631033	-104.68100732
18073.00	90.32	91.23	7215.60	2188.86N	7327.47E	==>	7646.24	40.59630191	-104.68064740
18173.00	90.32	91.23	7215.04	2186.72N	7427.44E	==>	7741.94	40.59629349	-104.68028749
18273.00	90.32	91.23	7214.47	2184.57N	7527.42E	==>	7837.64	40.59628507	-104.67992758
18373.00	90.32	91.23	7213.91	2182.43N	7627.39E	==>	7933.34	40.59627664	-104.67956767
18473.00	90.32	91.23	7213.35	2180.28N	7727.37E	==>	8029.04	40.59626822	-104.67920776
18534.89	90.32	91.23	7213.00	2178.95N	7789.25E	==>	8088.28	40.59626300	-104.67898500

All data is in Feet unless otherwise stated  
Coordinates are from Slot MD's are from Rig and TVD's are from Rig ( Planned Datum #1 4948.0ft above Mean Sea Level )  
Vertical Section is from 0.00N 0.00E on azimuth 74.37 degrees  
Bottom hole distance is 8088.28 Feet on azimuth 74.37 degrees from Wellhead  
Calculation method uses Minimum Curvature method  
Prepared by  
Date Printed: 28-Sep-2021



Targets							
Name	North[ft]	East[ft]	TVD[ft]	Latitude	Longitude	Northing	Easting
Ruby East 1 - LP	2388.48N	1978.17W	7268.00	40.59708100	-104.71414800	1461325.07	3218228.78
Ruby East 1 - BHL	2178.95N	7789.25E	7213.00	40.59626300	-104.67898500	1461115.55	3227995.93

Survey Tool Program						
Reference	Survey Name	MD[ft]	TVD[ft]	Survey Tool	Error Model	
1026248	Planned	1573.00	1573.00	WdW Rate Gyro	Standard	
1026247	Planned	18534.89	7213.00	ISCSWA MWD	Rev 4 + SAG + FLT	

Notes