

T4S, R96W, 6th P.M.

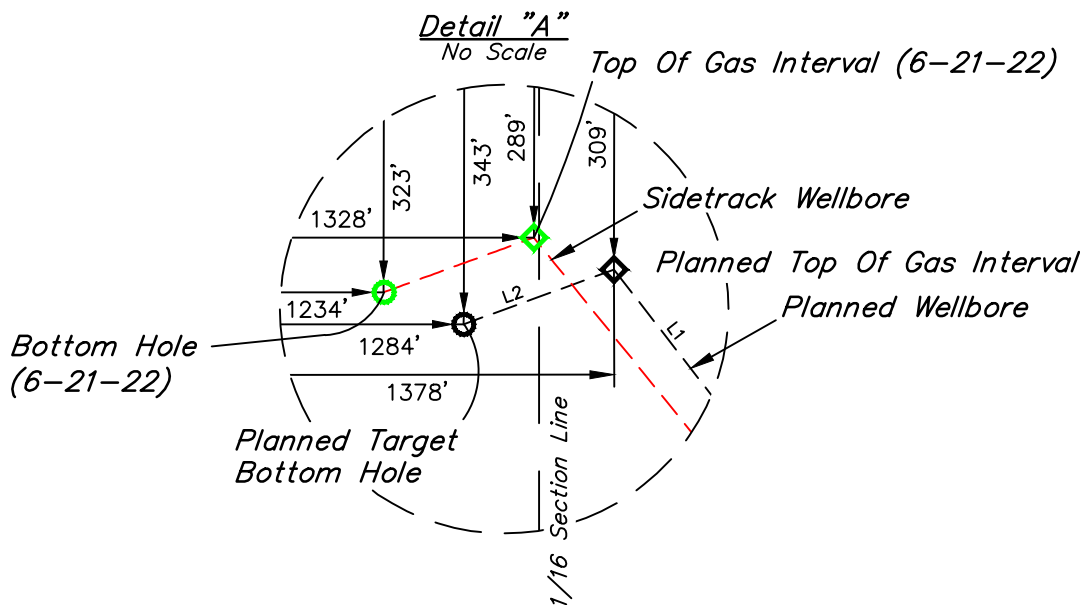
- NOTE:

Distances referenced
on plat to section lines
are perpendicular.



NAD 83 (SIDETRACK BOTTOM HOLE)
LATITUDE = 39°40'46.86" (39.679682)
LONGITUDE = 108°08'27.60" (108.141001)
NAD 27 (BOTTOM HOLE)
LATITUDE = 39°40'46.94" (39.679707)
LONGITUDE = 108°08'25.31" (108.140365)
UTM NAD 27 (ZONE 12)
N: 14422244.89 E: 2445072.63

LINE TABLE		
LINE	DIRECTION	LENGTH
L1	N37°44'47"W	943.88'
L2	S69°59'15"W	99.93'



CERTIFICAT

THIS IS TO CERTIFY THAT THE ABOVE PLAT WAS PREPARED AND
LOCATION AS SHOWN WAS STAKED ON THE GROUND FROM FIELD NOTES
OF ACTUAL SURVEYS MADE BY ME OR UNDER MY SUPERVISION AND THAT
THE SAME ARE TRUE AND CORRECT TO THE BEST OF MY KNOWLEDGE AND
BELIEF.

REGISTERED LAND SURVEYOR
REGISTRATION NO. 38130
STATE OF COLORADO
06-21-22

BASIS OF BEARINGS

BEARINGS ARE BASED ON THE ASSUMPTION THAT THE WEST LINE OF THE NORTHWEST 1/4 OF SECTION 26 BEARS N00°02'31"W. MONUMENTS DESCRIBED HEREON.

BASIS OF ELEVATION

BENCH MARK (H79) LOCATED IN THE NE 1/4 OF SECTION 35, T4S, R98W, 6th P.M., TAKEN FROM THE BULL FORK QUADRANGLE, COLORADO, 7.5 MINUTE SERIES. (TOPOGRAPHIC MAP) PUBLISHED BY THE UNITED STATES DEPARTMENT OF THE INTERIOR. GEOLOGICAL SURVEY. SAID ELEVATION IS MARKED AS BEING 8535 FEET.



UELS, LLC
Corporate Office * 85 South 200 East
Vernal, UT 84078 * (435) 789-1017

**Caerus Oil & Gas LLC**

**AS-DRILLED BJU B26 FED 11B-26 496
NE 1/4 NW 1/4, SECTION 26, T4S, R96W, 6th P.M.
GARFIELD COUNTY, COLORADO**

SURVEYED BY	DAYTON SLAUGH	11-05-21	SCALE
DRAWN BY	T.L.L.	06-21-22	1" = 1000'

WELL LOCATION PLAT