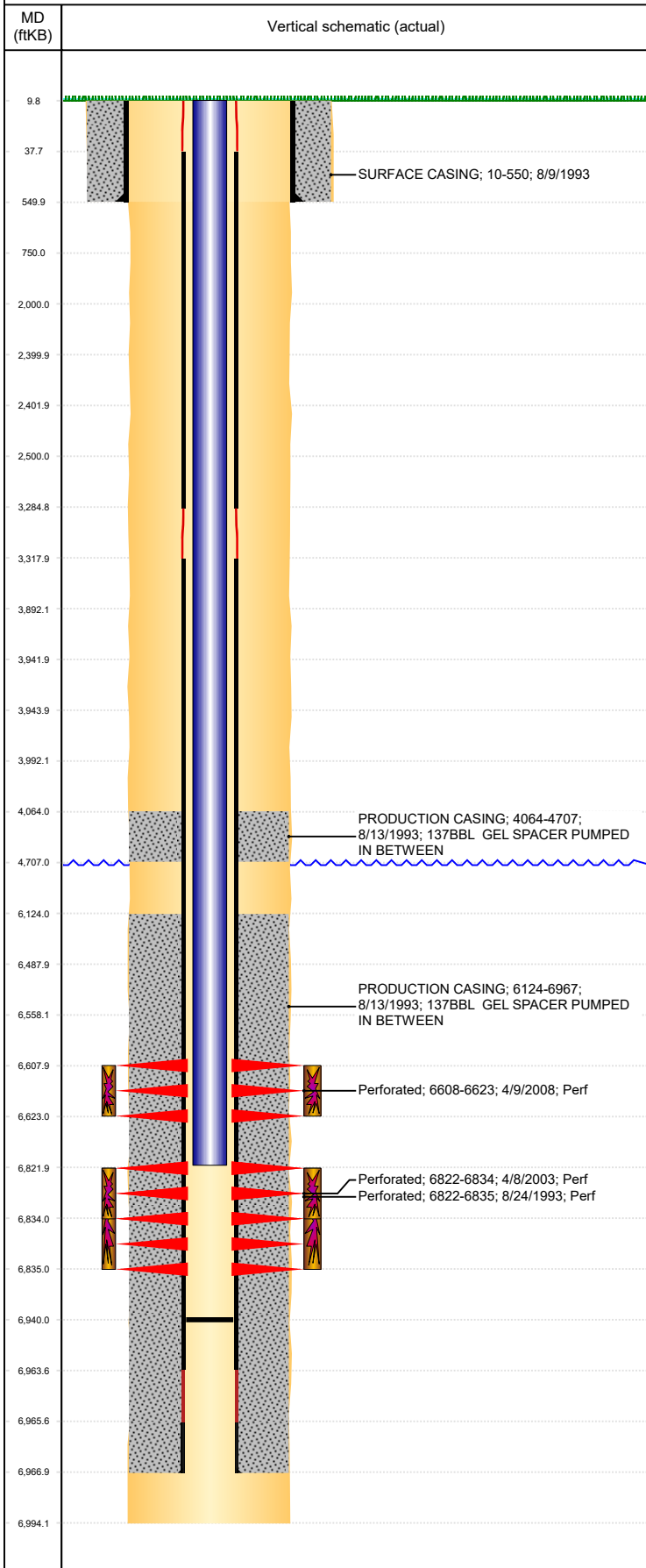




P&A Wellbore For State

Well Name: SPIKE STATE D12-03

Land, Original Hole, 6/20/2022 6:44:26 PM



Well Header

Surface UWI 0512317225	Business Unit Rockies	Gov Auth Dist	Prod Tree Loc Land
Orig. KB to Gnd (ft) 10.00	Original Spud Date 8/8/1993	Abandon Date	Well Sub-Status PR
Comment st lse # 70-7882-S			

Surface Location (Congressional)

Qtr 3 NE	Qtr 4 NW	Section 12	Twtnshp 3	Twtnsh... N	Range 64	Rng E/... W	Latitude (°) 40.24530526 1	Longitude (°) -104.50185102
-------------	-------------	---------------	--------------	----------------	-------------	----------------	----------------------------------	--------------------------------

Wellbore Sections

Section Des	Hole Size (in)	Act Top (ftKB)	Act Btm (ftKB)
SURFACE	12 1/4	10.0	550.0
PRODUCTION	7 7/8	550.0	6,994.0

Casing Strings

Csg Des	Run Date	OD (in)	Wt/Len (lb/ft)	Grade	Top Depth (MD) (ftKB)	Set Depth (MD) (ftKB)
Surface	8/9/1993	8 5/8	24.00		10	550
Production Casing	8/12/1993	2 7/8	6.50	N80	9.9	6967

Cement

Des	Start Date	Top (ftKB)	Btm (ftKB)
SURFACE CASING	8/9/1993	10.0	550.0
PRODUCTION CASING	8/13/1993	4,064.0	4,707.0
PRODUCTION CASING	8/13/1993	6,124.0	6,967.0

Zone Statuses

Zone Name	Status Date	Status	Fluid Type	Job	Prod Method
CODELL	4/30/2008	PR		RECOMPLETION, 4/7/2008 06:00	
CODELL	2/22/2010	PR			Flowing
NIOBRARA	2/22/2010	PR			Flowing
NIOBRARA	10/26/2017	PR			

Perforation Data

Linked Zone	Explosive Type	Entered Shot Total	Top (ftKB)	Btm (ftKB)	Date
NIOBRARA, Original Hole		60	6,608.0	6,623.0	4/9/2008
CODELL, Original Hole		50	6,822.0	6,835.0	8/24/1993
CODELL, Original Hole		52	6,822.0	6,834.0	4/8/2003

Stimulation Intervals

Zone	Start Date	Top (ftKB)	Btm (ftKB)
NIOBRARA, Original Hole	4/23/2008	6,608.0	6,623.0
CODELL, Original Hole	4/16/2003	6,822.0	6,834.0
CODELL, Original Hole	8/24/1993	6,822.0	6,835.0

Other In Hole

Run Date	Des	Make	OD (in)	Top (ftKB)	Btm (ftKB)

Logs

Date	Type	Depth Top (MD) (ftKB)	Btm (ftKB)
8/13/1993	COMPENSATED DENSITY GAMMA RAY	3,800	7,008.6
8/13/1993	DUAL INDUCTION GUARD LOG	3,800	7,008.6
8/23/1993	GAMMA SEISMOGRAM CEMENT BOND LOG	4,000	6,940.0

Plug Back Total Depths

Date	Type	Com	PBTD (ftKB)
4/8/2008	PLUG		6,660
4/25/2008	FILL	CLEANED OUT SAND PLUG.	6,940