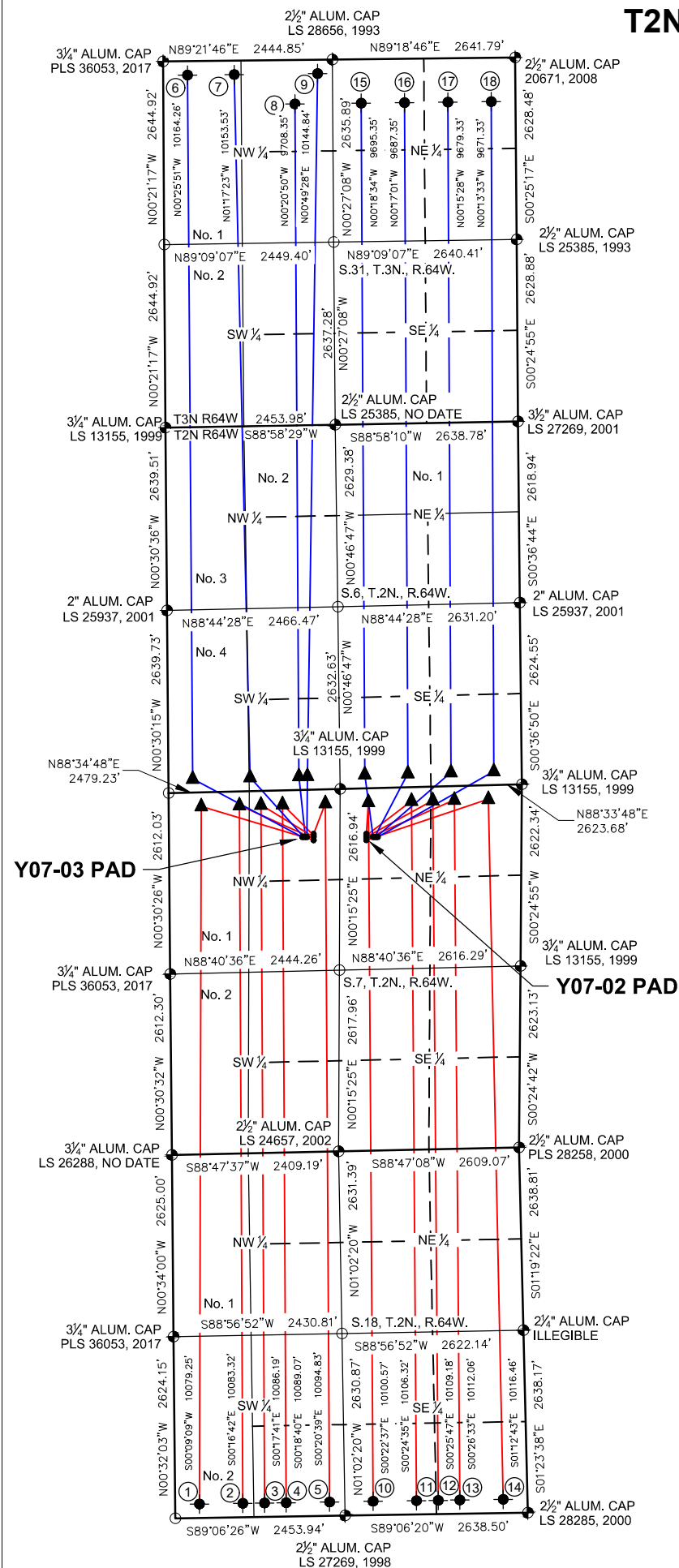
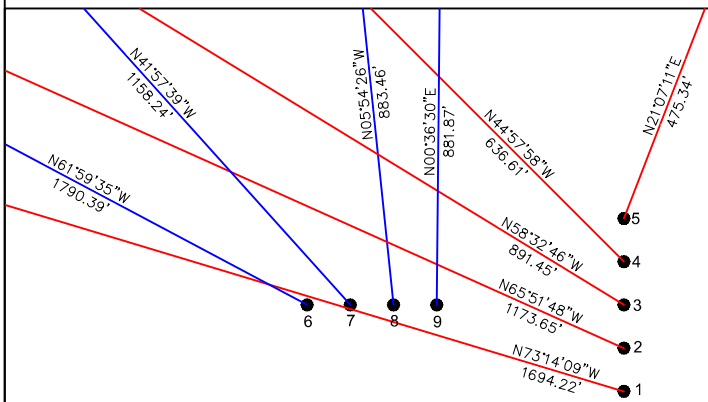


Y07-03 PAD & Y07-02 PAD
MULTI-WELL LOCATION PLAT / MULTI-WELL PLAN
T2N R64W SECTION 7



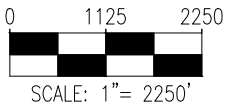
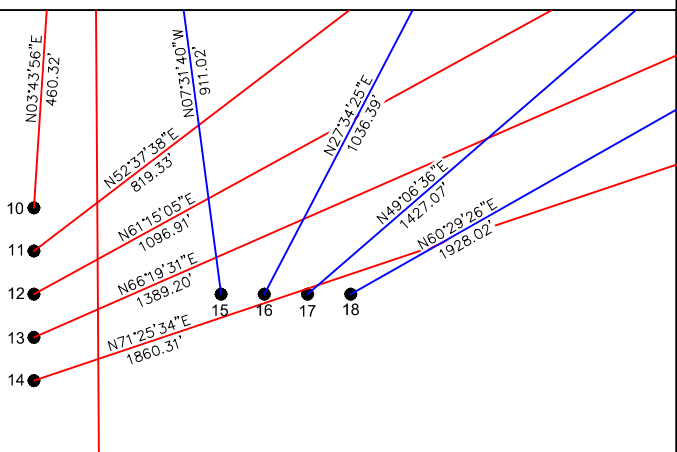
PROPOSED WELLBORE DIRECTION DATA

Y07-03 PAD
SLOTS 1-9



PROPOSED WELLBORE DIRECTION DATA

Y07-02 PAD
SLOTS 10-18





LEGEND

- = FOUND MONUMENT
- = CALCULATED POSITION
- = PROPOSED WELL
- ◆ = BOTTOM HOLE
- ▲ = TOP OF PRODUCTIVE ZONE
- ◆ = EXISTING WELL

Notes:

- 1) All bearings are Grid Bearings of the Colorado State Plane Coordinate System, North Zone, North American Datum 1983/2011. The lineal dimensions as shown herein are grid distances based upon the "U.S. Survey Foot." To get ground distances multiply shown distance by 1.000271.
- 2) Distances are measured at 90° from section line of the Sixth Principal Meridian, County of Weld, State of Colorado.
- 3) Ground elevations are based on an observed GPS elevation (NAVD 1988 DATUM).
- 4) Surface use: "RANGELAND"
- 5) Instrument Operator: Dominick Davis
- 6) This map does not represent a boundary survey.

DISCLAIMER:
THIS PLOT DOES NOT REPRESENT A MONUMENTED LAND SURVEY AND SHOULD NOT BE RELIED UPON TO DETERMINE BOUNDARY LINES, PROPERTY OWNERSHIP OR OTHER PROPERTY INTERESTS. PARCEL LINES, IF DEPICTED HAVE NOT BEEN FIELD VERIFIED AND MAY BE BASED UPON PUBLICLY AVAILABLE DATA THAT ALSO HAS NOT BEEN INDEPENDENTLY VERIFIED.

| SURFACE HOLE LOCATION | | | | | | | | | TOP OF PRODUCTIVE ZONE | | BOTTOM HOLE LOCATION | |
|--|-----------------|-------------------------|---------------------------|---|-----------|---------|---|------|------------------------|-----------|---|-----------|
| SLOT | WELL NAME | LATITUDE | LONGITUDE | FOOTAGE | | QTR-QTR | ELEV. | PDOP | FOOTAGE | | FOOTAGE | |
| 1 | PIONEER Y18-785 | 40.15795°N | 104.59545°W | 729' FNL | 2088' FWL | NENW | 4886' | 1.4 | 200' FNL | 470' FWL | 200' FSL | 350' FWL |
| 2 | PIONEER Y18-775 | 40.15801°N | 104.59545°W | 706' FNL | 2088' FWL | NENW | 4885' | 1.3 | 200' FNL | 1021' FWL | 200' FSL | 977' FWL |
| 3 | PIONEER Y18-770 | 40.15807°N | 104.59544°W | 684' FNL | 2088' FWL | NENW | 4884' | 1.5 | 200' FNL | 1332' FWL | 200' FSL | 1291' FWL |
| 4 | PIONEER Y18-766 | 40.15813°N | 104.59544°W | 661' FNL | 2088' FWL | NENW | 4884' | 1.3 | 200' FNL | 1643' FWL | 200' FSL | 1604' FWL |
| 5 | PIONEER Y18-756 | 40.15820°N | 104.59544°W | 639' FNL | 2089' FWL | NENW | 4883' | 1.4 | 200' FNL | 2264' FWL | 200' FSL | 2231' FWL |
| 6 | PIONEER D31-785 | 40.15808°N | 104.59604°W | 680' FNL | 1923' FWL | NENW | 4887' | 1.7 | 200' FSL | 350' FWL | 200' FNL | 350' FWL |
| 7 | PIONEER D31-775 | 40.15808°N | 104.59595°W | 680' FNL | 1946' FWL | NENW | 4887' | 1.7 | 200' FSL | 1179' FWL | 200' FNL | 1027' FWL |
| 8 | PIONEER D31-761 | 40.15808°N | 104.59587°W | 681' FNL | 1968' FWL | NENW | 4887' | 1.4 | 200' FSL | 1885' FWL | 635' FNL | 1900' FWL |
| 9 | PIONEER D31-756 | 40.15808°N | 104.59579°W | 681' FNL | 1991' FWL | NENW | 4886' | 1.7 | 200' FSL | 2008' FWL | 200' FNL | 2230' FWL |
| 10 | PIONEER Y18-744 | 40.15817°N | 104.59272°W | 658' FNL | 2240' FEL | NWNE | 4885' | 1.7 | 200' FNL | 2213' FEL | 200' FSL | 2231' FEL |
| 11 | PIONEER Y18-735 | 40.15811°N | 104.59272°W | 681' FNL | 2240' FEL | NWNE | 4885' | 1.7 | 200' FNL | 1592' FEL | 200' FSL | 1604' FEL |
| 12 | PIONEER Y18-730 | 40.15805°N | 104.59272°W | 703' FNL | 2239' FEL | NWNE | 4884' | 1.5 | 200' FNL | 1282' FEL | 200' FSL | 1290' FEL |
| 13 | PIONEER Y18-725 | 40.15799°N | 104.59272°W | 726' FNL | 2239' FEL | NWNE | 4884' | 1.6 | 200' FNL | 971' FEL | 200' FSL | 977' FEL |
| 14 | PIONEER Y18-715 | 40.15793°N | 104.59272°W | 748' FNL | 2239' FEL | NWNE | 4883' | 1.6 | 200' FNL | 480' FEL | 200' FSL | 350' FEL |
| 15 | PIONEER D31-744 | 40.15805°N | 104.59237°W | 706' FNL | 2142' FEL | NWNE | 4881' | 1.6 | 200' FSL | 2265' FEL | 635' FNL | 2230' FEL |
| 16 | PIONEER D31-735 | 40.15805°N | 104.59229°W | 706' FNL | 2119' FEL | NWNE | 4881' | 1.6 | 200' FSL | 1643' FEL | 635' FNL | 1603' FEL |
| 17 | PIONEER D31-725 | 40.15805°N | 104.59221°W | 707' FNL | 2097' FEL | NWNE | 4881' | 1.6 | 200' FSL | 1022' FEL | 635' FNL | 977' FEL |
| 18 | PIONEER D31-716 | 40.15805°N | 104.59213°W | 707' FNL | 2074' FEL | NWNE | 4880' | 1.4 | 200' FSL | 400' FEL | 635' FNL | 350' FEL |
| <div><div><div><div>8620 Wolff Court Westminster, CO 80031 (303) 928-7128 www.ascentgeomatics.com</div></div></div></div> | | FIELD DATE: 09-22-18 | DRAWING DATE: 06-17-22 | SURFACE LOCATION: SEC. 7, T2N, R64W, 6TH P.M. WELD COUNTY, COLORADO | | | PUBLICLY AVAILABLE DATA SOURCES HAVE NOT BEEN INDEPENDENTLY VERIFIED BY ASCENT. | | | |  | |
| | | DRAWN BY: IJM | CHECKED BY: CSG | | | | | | | | | |