



# **Bison Oil & Gas III**

## **PLUG & ABANDON POST JOB REPORT**

Alice Nay 1 (05651) 05-123-05651  
S:14 T:9N R:58W Weld CO

CallSheet #: 81301  
Proposal #: 59646

## Job Details & Summary

### Geometry

| Type      | Function | OD (in) | ID (in) | Weight (lb/ft) | Top (ft) | Bottom (ft) | Excess (%) |
|-----------|----------|---------|---------|----------------|----------|-------------|------------|
| Casing    | Outer    | 10.75   | 10.192  | 32.75          | 0        | 156         | 0          |
| Open Hole | Outer    |         | 9       |                | 156      | 5408        | 0          |
| Tubing    | Inner    | 2.875   | 2.441   | 6.4            | 0        | 5408        | 0          |

### Equipment / People

| Unit Type            | Unit         | Power Unit   |
|----------------------|--------------|--------------|
| Cement Trailer Float | CTF-002      | TRC(TRB)-110 |
| Cement Trailer Float | CTF-408      | TRC(TRB)-108 |
| Cement Pump Float    | CPF-182      | TRS-107      |
| Cement Utility Float | CUF(FIF)-159 | LDV-013      |

### Timing

| Event           | Date/Time      |
|-----------------|----------------|
| Call Out        | 5/1/2022 08:00 |
| Depart Facility | 5/1/2022 11:30 |
| On Location     | 5/1/2022 13:00 |
| Rig Up Iron     | 5/1/2022 13:30 |
| Job Started     | 5/1/2022 14:47 |
| Job Completed   | 5/2/2022 04:30 |
| Rig Down Iron   | 5/2/2022 04:45 |
| Depart Location | 5/2/2022 07:00 |

### General Job Information

| Metrics                 | Value      |
|-------------------------|------------|
| Well Fluid Density      | 8.5 lb/gal |
| Well Fluid Type         | WBM        |
| Rig Circulation Vol     | N/A bbls   |
| Rig Circulation Time    | N/A hours  |
| Calculated Displacement | 19 bbls    |
| Actual Displacement     | 19 bbls    |
| Total Spacer to Surface | 0 bbls     |
| Total CMT to Surface    | 0 bbls     |
| Well Topped Out         | No         |

### Job Details

| Metrics                        | Value      |
|--------------------------------|------------|
| Flare Prior to Job             | No         |
| Flare Prior to Job             | 0 units    |
| Flare During Job               | No         |
| Flare During Job               | 0 units    |
| Flare at End of Job            | No         |
| Flare at End of Job            | 0 units    |
| Well Full Prior to Job         | Yes        |
| Well Fluid Density Into Well   | 8.5 lb/gal |
| Well Fluid Density Out of Well | 8.5 lb/gal |

### Job Details (cont.)

| Metrics | Value  |
|---------|--------|
| BHCT    | 165 °F |
| BHST    | 198 °F |

### Water Analysis

| Metrics          | Value     | Recommended |
|------------------|-----------|-------------|
| Water Source     | Flat Tank |             |
| Temperature      | 55 °F     | 50-80 °F    |
| pH Level         | 7         | 5.5-8.5     |
| Chlorides        | 0 mg/L    | 0-3000 mg/L |
| Total Alkalinity | 140       | 0-1000      |
| Total Hardness   | 250 mg/L  | 0-500 mg/L  |
| Carbonates       | 40 mg/L   | 0-100 mg/L  |
| Sulfates         | <200 mg/L | 0-1500 mg/L |
| Potassium        | 0 mg/L    | 0-3000 mg/L |
| Iron             | 0 mg/L    | 0-300 mg/L  |

### Circulation

| Lost Circulation Experienced |
|------------------------------|
| No                           |

## Job Execution Information

| Fluid | Product                 | Function          | Density (lb/gal) | Yield (ft <sup>3</sup> /sk) | Water Rq. (gal/sk) | Water Rq. (gal/bbl) | Volume (sks) | Volume (bbl) | Designed Top (ft) |
|-------|-------------------------|-------------------|------------------|-----------------------------|--------------------|---------------------|--------------|--------------|-------------------|
| 1     | Flush Ahead Plug-1      | Flush             | 8.34             |                             |                    | 42.00               |              | 20.00        | 0                 |
| 2     | Plug-1: (4553'-4703')   | Plug              | 15.80            | 1.16                        | 5.01               |                     | 120.00       | 24.89        | 0                 |
| 3     | Plug-1 Displacement     | Displacement      | 8.34             |                             |                    | 42.00               |              | 30.00        | 0                 |
| 4     | Flush Ahead Plug-2      | Flush             | 8.34             |                             |                    | 42.00               |              | 20.00        | 0                 |
| 5     | Plug-2: (1550' - 1700') | Plug              | 15.80            | 1.16                        | 5.00               |                     | 150.00       | 30.96        | 0                 |
| 6     | Plug-2 Displacement     | Displacement      | 8.34             |                             |                    | 42.00               |              | 8.00         | 0                 |
| 7     | Flush Ahead Plug-3      | Flush             | 8.34             |                             |                    | 42.00               |              | 20.00        | 0                 |
| 8     | Plug-3: (0'-500')       | Plug              | 15.80            | 1.16                        | 5.00               |                     | 375.00       | 77.41        | 0                 |
| 9     | Plug-3 Displacement     | DisplacementFinal | 8.34             |                             |                    | 42.00               |              | 1.00         | 0                 |

## Job Fluid Details

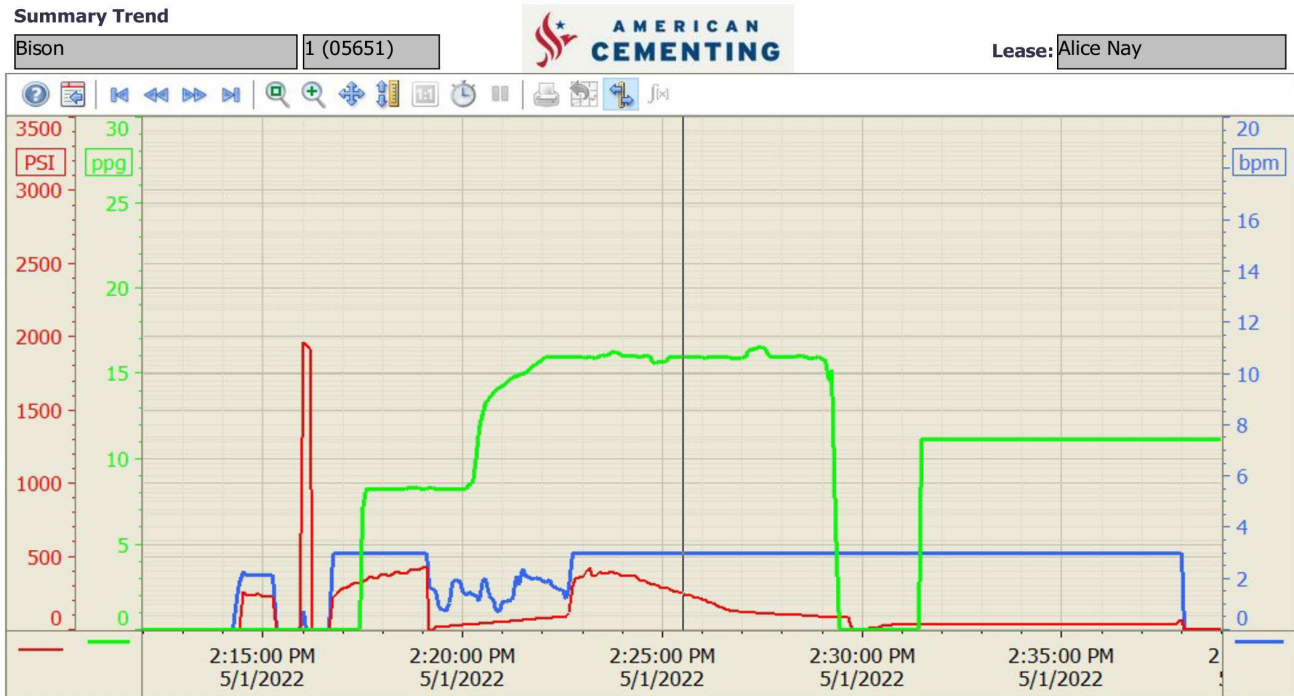
| Fluid | Type | Fluid                   | Product | Function    | Conc.  | Uom   |
|-------|------|-------------------------|---------|-------------|--------|-------|
| 2     | Plug | Plug-1: (4553'-4703')   | CLASS G | Cement      | 100.00 | %     |
| 5     | Plug | Plug-2: (1550' - 1700') | CLASS G | Cement      | 100.00 | %     |
| 5     | Plug | Plug-2: (1550' - 1700') | A-7P    | Accelerator | 2.00   | %BWOW |
| 8     | Plug | Plug-3: (0'-500')       | CLASS G | Cement      | 100.00 | %     |
| 8     | Plug | Plug-3: (0'-500')       | A-7P    | Accelerator | 3.00   | %BWOW |

## Job Logs

| Line | Event               | Date (MM/DD/YY) | Time (HH:MM) | Density (lb/gal) | Pump Rate (bpm) | Pump Volume (bbls) | Pipe Pressure (psi) | Comment  |
|------|---------------------|-----------------|--------------|------------------|-----------------|--------------------|---------------------|--|
| 1    | Callout             | 5/1/2022        | 08:00        |                  |                 |                    |                     | Crew called out requested on location for 1300                             |
| 2    | Depart For Location | 5/1/2022        | 11:00        |                  |                 |                    |                     | Crew departed for location   |
| 3    | Arrive On Location  | 5/1/2022        | 13:00        |                  |                 |                    |                     | Crew arrived on location   |
| 4    | Safety Meeting      | 5/1/2022        | 13:15        |                  |                 |                    |                     | Safety meeting   |
| 5    | Rig Up Iron         | 5/1/2022        | 13:30        |                  |                 |                    |                     | Spotted and rigged up all equipment  |
| 6    | Safety Meeting      | 5/1/2022        | 14:15        |                  |                 |                    |                     | Safety meeting   |
| 7    | Fill Lines          | 5/1/2022        | 14:47        | 8.34             | 2               | 2                  | 400                 | Fill lines with 2 bbls water   |
| 8    | Pressure Test Lines | 5/1/2022        | 14:48        |                  |                 |                    |                     | Pressure test lines to 2000 psi  |
| 9    | Pump Spacer         | 5/1/2022        | 14:49        | 8.34             | 3               | 7.25               | 200                 | Pump 7.25 bbls water spacer  |
| 10   | Pump Cement         | 5/1/2022        | 14:55        | 15.8             | 3               | 24.5               | 100                 | Pump 24.5 bbls cement @ 15.8 ppg (120 sks, 1.15 Y, 5.0 gal/sk)             |
| 11   | Pump Spacer         | 5/1/2022        | 15:03        | 8.34             | 3               | 0.75               | 100                 | Pump 0.75 bbls water spacer  |
| 12   | Pump Displacement   | 5/1/2022        | 15:04        | 8.5              | 3               | 19                 | 100                 | Pump 19 bbls mud displacement  |
| 13   | Shutdown            | 5/1/2022        | 15:11        |                  |                 |                    |                     | Shutdown   |
| 14   | Pull Out Of Hole    | 5/1/2022        | 15:13        |                  |                 |                    |                     | POOH to ~4419' @60'/min  |
| 15   | Waiting             | 5/1/2022        | 15:15        |                  |                 |                    |                     | Waiting on rig to POOH   |
| 16   | Safety Meeting      | 5/1/2022        | 16:45        |                  |                 |                    |                     | Safety meeting   |
| 17   | Pump Spacer         | 5/1/2022        | 17:09        | 8.34             | 3               | 9.25               | 200                 | Pump 9.25 bbls water spacer  |
| 18   | Pump Cement         | 5/1/2022        | 17:19        | 15.8             | 3               | 30.9               | 100                 | Pump 30.9 bbls cement @ 15.8 ppg (150 sks, 1.16 Y, 5.01 gal/sk 2% CC BWOB) |
| 19   | Pump Spacer         | 5/1/2022        | 17:31        | 8.34             | 3               | 0.75               | 100                 | Pump 0.75 bbls water spacer  |
| 20   | Pump Displacement   | 5/1/2022        | 17:32        | 8.5              | 3               | 5                  | 100                 | Pump 5 bbls mud displacement   |
| 21   | Shutdown            | 5/1/2022        | 17:34        |                  |                 |                    |                     | Shutdown   |
| 22   | Pull Out Of Hole    | 5/1/2022        | 17:36        |                  |                 |                    |                     | POOH to ~1513' @60'/min  |
| 23   | Waiting             | 5/1/2022        | 17:45        |                  |                 |                    |                     | Waiting on rig to tag plug   |
| 24   | Safety Meeting      | 5/1/2022        | 22:15        |                  |                 |                    |                     | Safety meeting   |
| 25   | Pump Spacer         | 5/1/2022        | 22:46        | 8.34             | 3               | 20                 | 100                 | Pump 20 bbls water spacer  |
| 26   | Pump Cement         | 5/1/2022        | 23:00        | 15.8             | 3               | 78.1               | 100                 | Pump 78.1bbls cement @ 15.8 ppg (375 sks, 1.17 Y, 5.01 gal/sk 3% CC BWOB)  |
| 27   | Pump Spacer         | 5/1/2022        | 23:29        | 8.34             | 3               | 1                  | 100                 | Pump 1 bbls water spacer   |
| 28   | Shutdown            | 5/1/2022        | 23:30        |                  |                 |                    |                     | Shutdown   |
| 29   | Pull Out Of Hole    | 5/1/2022        | 23:37        |                  |                 |                    |                     | POOH   |
| 30   | Waiting             | 5/1/2022        | 23:40        |                  |                 |                    |                     | Waiting on rig to tag plug, after 4 hrs rig tagged cement at 15'           |
| 31   | Safety Meeting      | 5/2/2022        | 04:30        |                  |                 |                    |                     | Safety meeting   |
| 32   | Rig Down Iron       | 5/2/2022        | 04:45        |                  |                 |                    |                     | Rigged down all equipment safely   |
| 33   | Depart Location     | 5/2/2022        | 07:00        |                  |                 |                    |                     | Crew departed from location  |

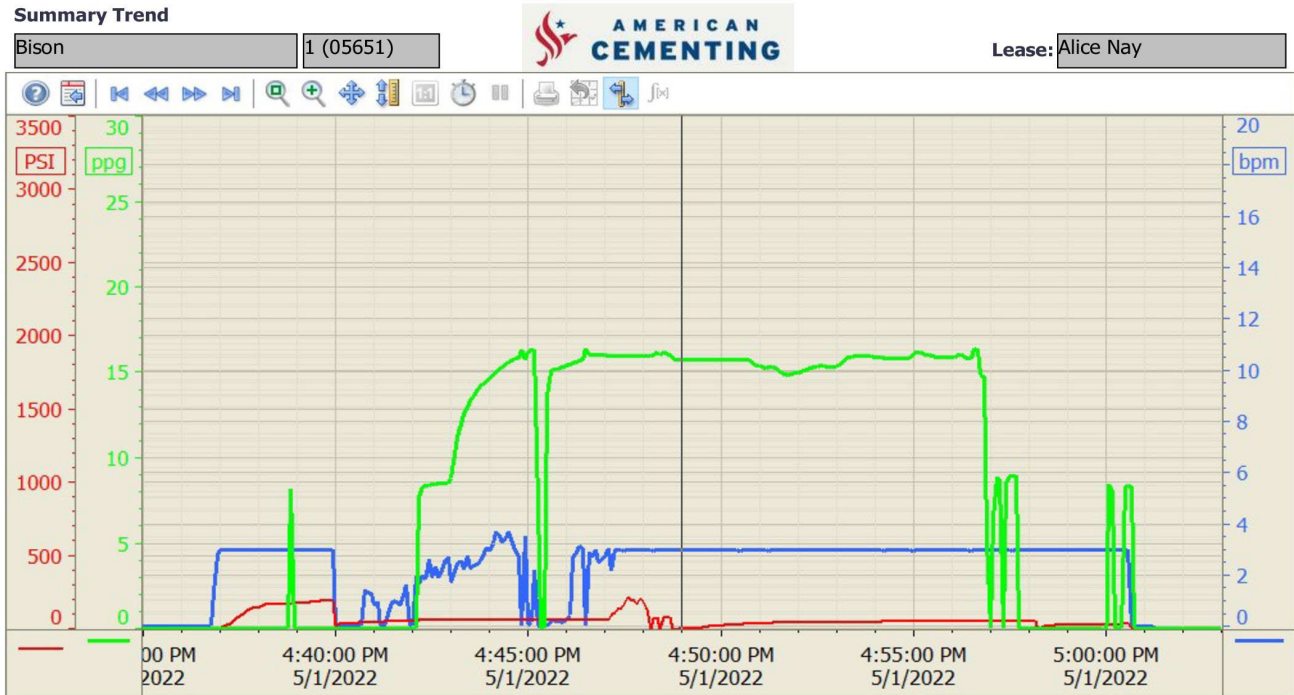
## Pump Diagrams

Plug 1:



5/1/2022 3:05:10 PM

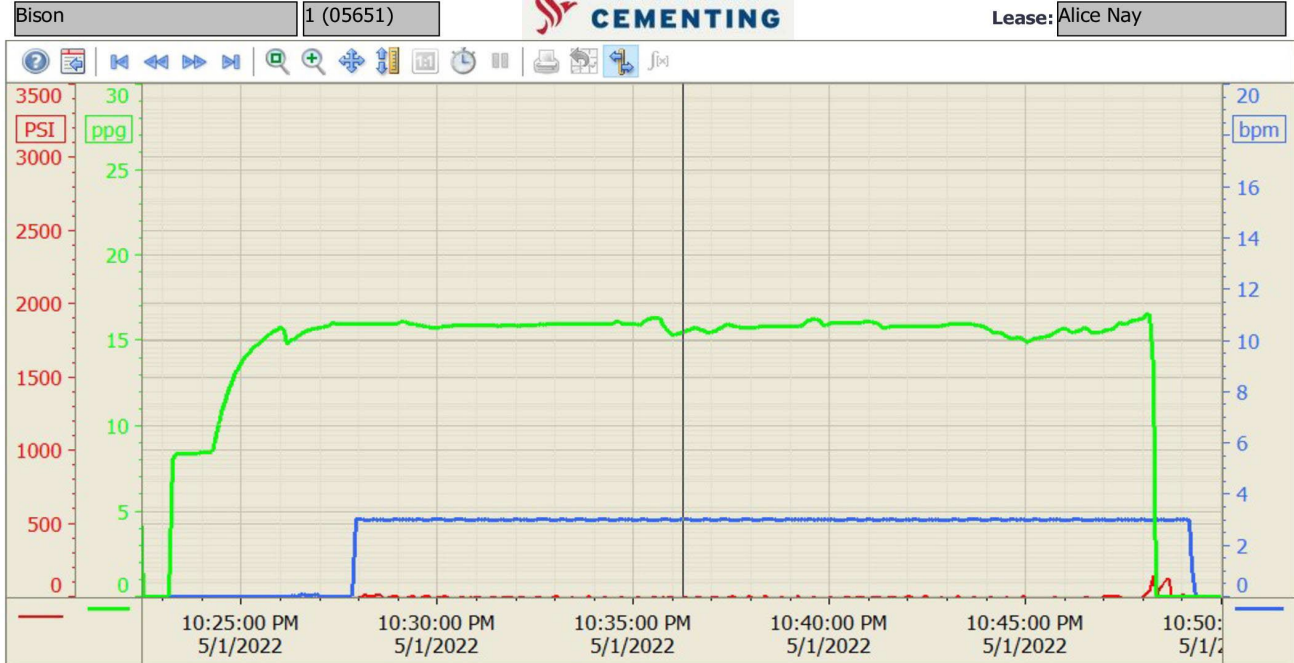
Plug 2:



5/1/2022 6:44:40 PM

Plug 3:

### Summary Trend



5/1/2022 11:33:28 PM