



# **Bison Oil & Gas III PLUG & ABANDON POST JOB REPORT**

NAY 1 05-123-05660  
S:14 T:9N R:58W Weld CO

CallSheet #: 81030  
Proposal #: 59220

## Job Details & Summary

### Geometry

Type	Function	OD (in)	ID (in)	Weight (lb/ft)	Top (ft)	Bottom (ft)	Excess (%)
Casing	Outer	10.75	10.192	32.75	0	154	0
Open Hole	Outer		8.875		154	2500	0
Casing	Outer	5.5	4.892	17	2500	6310	0
Tubing	Inner	2.875	2.441	6.4	0	2521	0

### Equipment / People

Unit Type	Unit
Cement Pump Float	CPF-182
Cement Trailer Float	CTF-193
Cement Trailer Float	CTF-009
Cement Utility Float	CUF(FIF)-161

### Timing

Event	Date/Time
Call Out	4/11/2022 19:00
Depart Facility	4/11/2022 21:00
On Location	4/11/2022 23:30
Rig Up Iron	4/11/2022 23:45
Job Started	4/12/2022 02:12
Job Completed	4/12/2022 18:45
Rig Down Iron	4/12/2022 19:00
Depart Location	4/12/2022 19:30

### General Job Information

Metrics	Value
Well Fluid Density	9.5 lb/gal
Well Fluid Type	WBM
Rig Circulation Vol	n/a bbls
Rig Circulation Time	4 hours
Calculated Displacement	13 bbls
Actual Displacement	13 bbls
Total Spacer to Surface	n/a bbls
Total CMT to Surface	8 bbls
Well Topped Out	Yes
Top Out Volume	4 bbls

### Job Details

Metrics	Value
Flare Prior to Job	No
Flare Prior to Job	0 units
Flare During Job	No
Flare During Job	0 units
Flare at End of Job	No
Flare at End of Job	0 units
Well Full Prior to Job	Yes
Well Fluid Density Into Well	9.5 lb/gal
Well Fluid Density Out of Well	9.5 lb/gal

### Job Details (cont.)

Metrics	Value
BHCT	166 °F
BHST	200 °F

### Water Analysis

Metrics	Value	Recommended
Water Source	None	
Temperature	60 °F	50-80 °F
pH Level	7	5.5-8.5
Chlorides	1500 mg/L	0-3000 mg/L
Total Alkalinity	500	0-1000
Total Hardness	200 mg/L	0-500 mg/L
Carbonates	50 mg/L	0-100 mg/L
Sulfates	1200 mg/L	0-1500 mg/L
Potassium	1700 mg/L	0-3000 mg/L
Iron	100 mg/L	0-300 mg/L

### Circulation

Lost Circulation Experienced
No

### Job Execution Information

Fluid	Product	Function	Density (lb/gal)	Yield (ft <sup>3</sup> /sk)	Water Rq. (gal/sk)	Water Rq. (gal/bbl)	Volume (sks)	Volume (bbl)	Designed Top (ft)
1	Flush Ahead Plug-1	Flush	8.45			41.36		20.00	0
2	Plug-1: Top of Prod Casing	Plug	15.80	1.16	5.00		120.00	24.77	0
3	Plug-1 Displacement	Displacement	8.34			42.00		13.00	0
4	Flush Ahead Plug-2	Flush	8.45			41.36		20.00	0
5	Plug-2: Pierre (1850' - 1700')	Plug	15.80	1.16	5.00		120.00	24.77	0
6	Plug-2 Displacement	Displacement	8.34			42.00		9.00	0
7	Flush Ahead Plug-3	Flush	8.45			41.36		20.00	0
8	Plug-3: Surface (500' - 0')	Plug	15.80	1.16	5.00		300.00	61.93	0
9	Plug-3 Displacement	DisplacementFinal	8.34			42.00		1.00	0

### Job Fluid Details

Fluid	Type	Fluid	Product	Function	Conc.	Uom
1	Flush	Flush Ahead Plug-1	SAPP	Surfactant	10.00	lb/bbl
2	Plug	Plug-1: Top of Prod Casing	CLASS G	Cement	100.00	%
2	Plug	Plug-1: Top of Prod Casing	A-7P	Accelerator	3.00	%BWOW
4	Flush	Flush Ahead Plug-2	SAPP	Surfactant	10.00	lb/bbl
5	Plug	Plug-2: Pierre (1850' - 1700')	CLASS G	Cement	100.00	%
5	Plug	Plug-2: Pierre (1850' - 1700')	A-7P	Accelerator	3.00	%BWOW
7	Flush	Flush Ahead Plug-3	SAPP	Surfactant	10.00	lb/bbl
8	Plug	Plug-3: Surface (500' - 0')	CLASS G	Cement	100.00	%
8	Plug	Plug-3: Surface (500' - 0')	A-7P	Accelerator	3.00	%BWOW

## Job Logs

Line	Event	Date (MM/DD/YY)	Time (HH:MM)	Density (lb/gal)	Pump Rate (bpm)	Pump Volume (bbls)	Pipe Pressure (psi)	Comment
1	call out	4/11/2022	19:00					crew called out to location
2	on location	4/11/2022	23:30					crew on location, spot equipment
3	rig up	4/11/2022	23:50					rig up equipment
4	safety meeting	4/12/2022	01:45					safety meeting with company man and rig crew / as per company man calculate plugs with 9 1/2 hole
5	pressure test	4/12/2022	02:12	8.34	0.2	0.2	2800	pressure test lines to 2800 psi
6	first plug	4/12/2022	02:14	15.8	4	24.8	400	first plug: @ 2521' / 20 bbl SAPP ahead of cement, 120 sk / 24.8 bbl slurry @ 15.8 # , 1.5 bbl SAPP behind and 11.5 bbl mud displacement, wet sample taken and weight verified, will give 4 hrs for cement to set
7	pull pipe	4/12/2022	02:30					pulling pipe out, and circulate
8	tag plug	4/12/2022	06:40					tag plug @ 1996'
9	second plug	4/12/2022	07:24	15.8	4	24.8	400	second plug: @ 1865' / 20 bbl SAPP ahead of cement / 120 sk / 24.8 bbl slurry, 1.5 bbl SAPP behind and 7.6 bbl mud displacement, wet sample taken and weight verified, will wait 4 hrs to set
10	pull pipe	4/12/2022	08:04					rig pulling pipe and circulate
11	try to tag	4/12/2022	12:36					try to tag going down to 1865', didn't tag, came back out to give it more time
12	tag plug	4/12/2022	15:33					tag plug @ 1575'
13	pressure test	4/12/2022	16:38	8.34	0.2	0.2	2800	pressure test lines to 2800 psi
14	third plug	4/12/2022	16:42	15.8	4	67	170	surface plug from 515' / 325 sk / 67 bbl slurry / wait for rig crew to rig down BOP to tap out well
15	tap out	4/12/2022	18:45	15.8	3	4	0	tap out well / 20 sk / 4 bbl slurry
16	rig down	4/12/2022	19:00					rig down equipment
17		4/12/2022	00:00					thanks

## Pump Diagrams

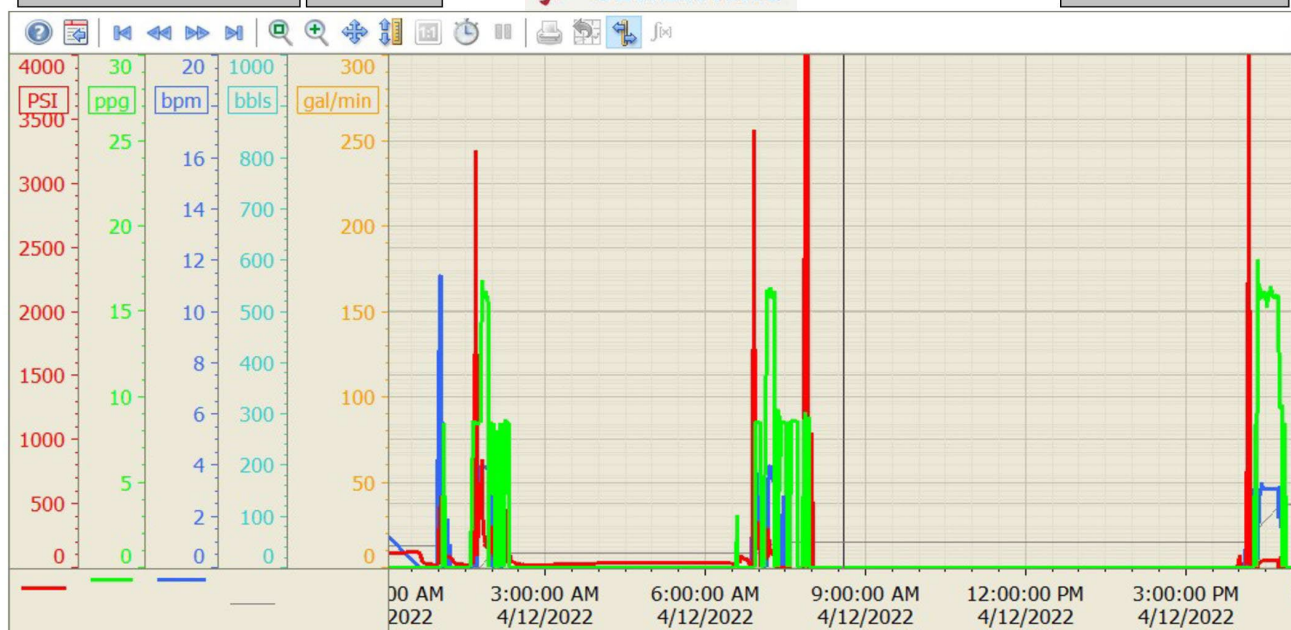
### Summary Trend

Bison Oil & Gas III

1



Lease: NAY



4/12/2022 6:43:00 PM

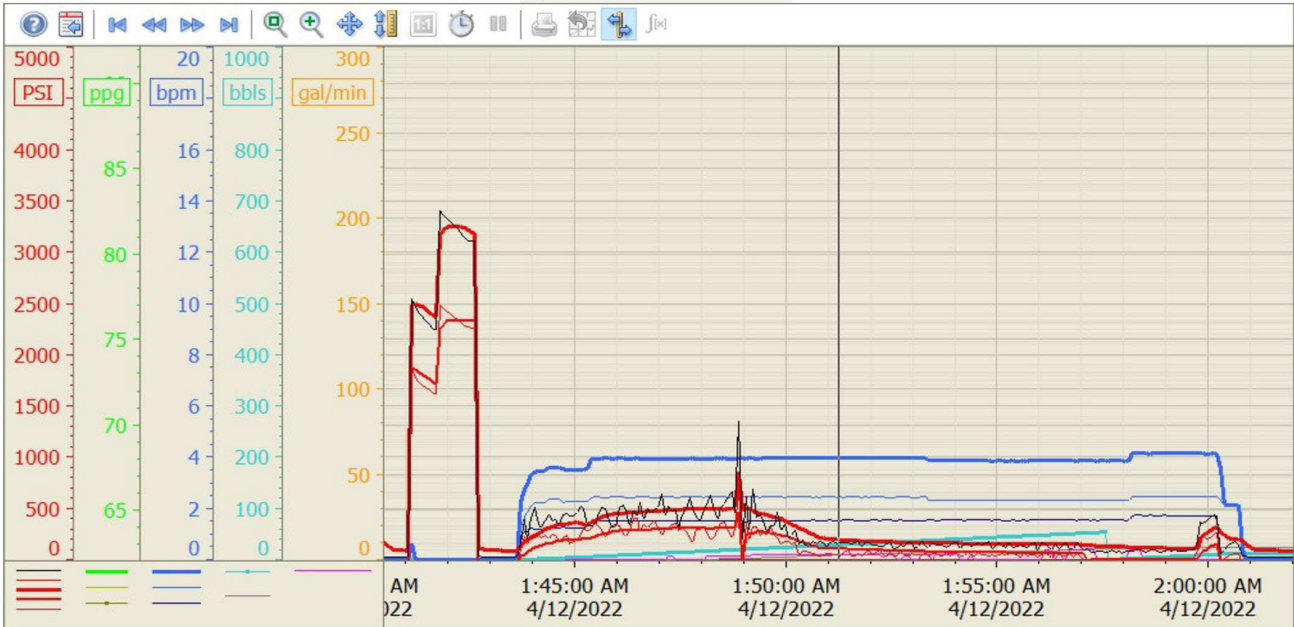
Summary Trend

Bison Oil & Gas III

1



Lease: NAY



4/12/2022 2:22:02 AM

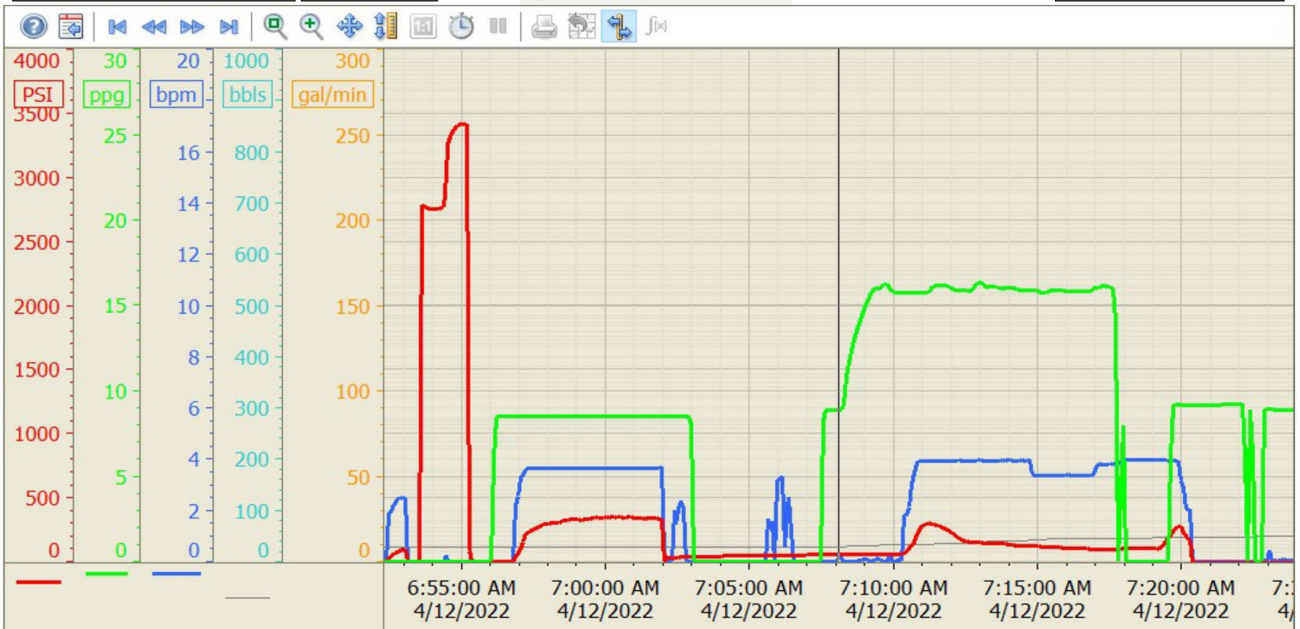
Summary Trend

Bison Oil & Gas III

1



Lease: NAY



4/12/2022 3:35:08 PM



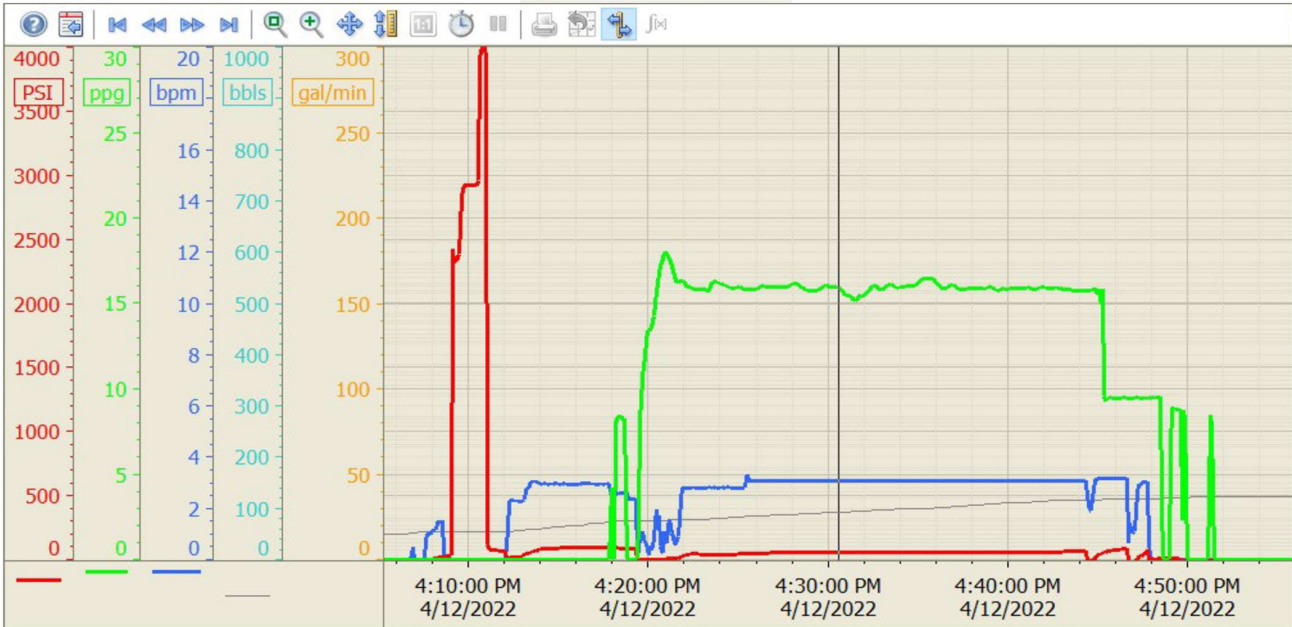
Summary Trend

Bison Oil & Gas III

1



Lease: NAY



4/12/2022 5:42:20 PM