

Company: Occidental Petroleum

Well: Bierig-UPRR 42-35

Field: Wattenberg

County: Weld State: Colorado

Isolation Scanner

VDL Wide

Gamma Ray - CCL

County: Weld
 Field: Wattenberg
 Location: SENE S35 T4N R66W
 Well: Bierig-UPRR 42-35
 Company: Occidental Petroleum

Location:	SENE S35 T4N R66W	Elev.:	K.B.	4816.00 ft
	1980' FNL & 780' FSL		G.L.	4806.00 ft
Permanent Datum:		Ground Level		4806.00 f
Log Measured From:		Kelly Bushing	10.00 ft	above Perm.Datum
Drilling Measured From:		Kelly Bushing		
API Serial No.	05-123-12700	Section:	35	Township:
				4N
				Range:
				66W

Logging Date	31-Mar-2022
Run Number	One
Depth Driller	7386.00 ft
Schlumberger Depth	7386.00 ft
Bottom Log Interval	6890.00 ft
Top Log Interval	55.00 ft
Casing Fluid Type	Water
Salinity	
Density	9 lbm/gal
Fluid Level	8.00 ft
BIT/CASING/TUBING STRING	
Bit Size	7.88 in
From	360.00 ft
To	7386.00 ft
Casing/Tubing Size	4.5 in
Weight	12.75 lbm/ft
Grade	N/A
From	0.00 ft
To	7384.00 ft
Max Recorded Temperatures	220 degF
Logger on Bottom	31-Mar-2002
Time	09:02:00
Unit Number	9801
Location:	Ft. Morgan
Recorded By	L. Engels
Witnessed By	Nate Windholz

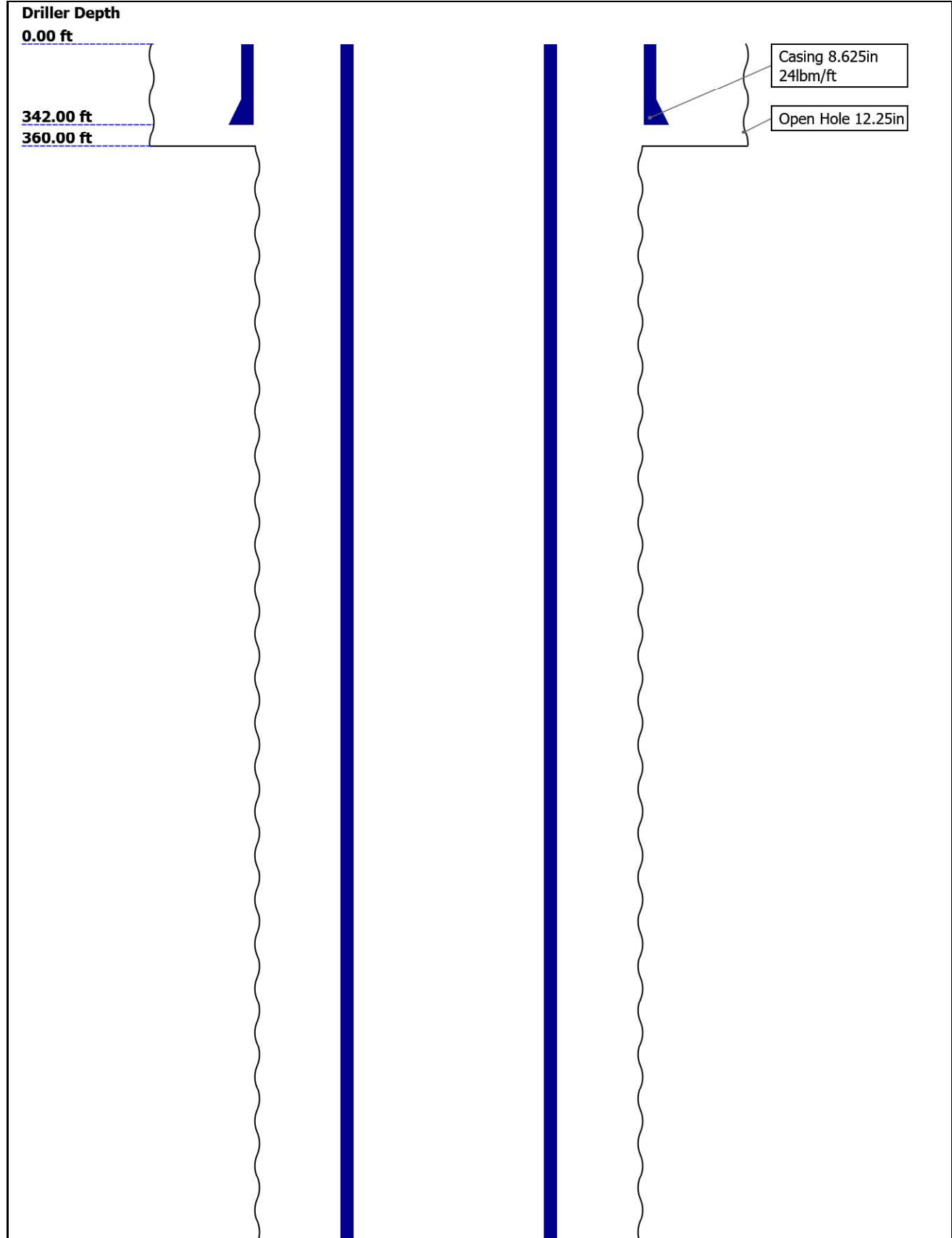
Disclaimer

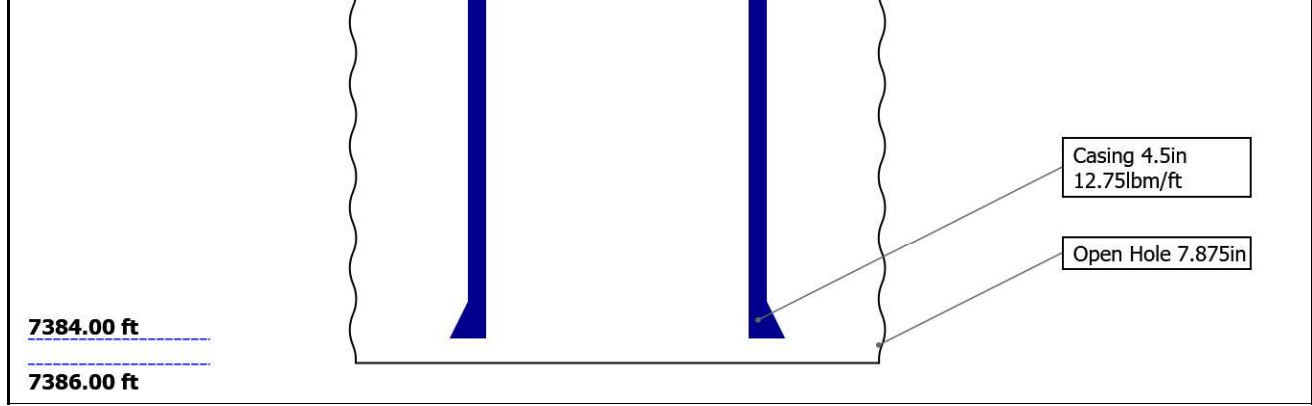
THE USE OF AND RELIANCE UPON THIS RECORDED-DATA BY THE HEREIN NAMED COMPANY (AND ANY OF ITS AFFILIATES, PARTNERS, REPRESENTATIVES, AGENTS, CONSULTANTS AND EMPLOYEES) IS SUBJECT TO THE TERMS AND CONDITIONS AGREED UPON BETWEEN SCHLUMBERGER AND THE COMPANY, INCLUDING: (a) RESTRICTIONS ON USE OF THE RECORDED-DATA; (b) DISCLAIMERS AND WAIVERS OF WARRANTIES AND REPRESENTATIONS REGARDING COMPANY'S USE AND RELIANCE UPON THE RECORDED-DATA; AND (c) CUSTOMER'S FULL AND SOLE RESPONSIBILITY FOR ANY INFERENCE DRAWN OR DECISION MADE IN CONNECTION WITH THE USE OF THIS RECORDED-DATA.

Contents

1. Header
2. Disclaimer
3. Contents
4. Well Sketch
5. Borehole Size/Casing/Tubing Record
6. Remarks and Equipment Summary
7. Depth Summary
8. IBC Fluid Properties Measurement
9. One IBC VDL WIDE
 - 9.1 Integration Summary
 - 9.2 Composite Summary
 - 9.3 Log (IBC VDL WIDE)
10. One IBC VDL Wide
 - 10.1 Integration Summary
 - 10.2 Composite Summary
 - 10.3 Log (IBC VDL WIDE)
11. Tail

Well Sketch





Borehole Size/Casing/Tubing Record

Bit					
Bit Size (in)	12.25	7.875			
Top Driller (ft)	0	360			
Top Logger (ft)	0	360			
Bottom Driller (ft)	360	7386			
Bottom Logger (ft)	360	7386			
Casing					
Size (in)	8.625	4.5			
Weight (lbm/ft)	24	12.75			
Inner Diameter (in)	8.097	3.947			
Grade	N/A	N/A			
Top Driller (ft)	0	0			
Top Logger (ft)	0	0			
Bottom Driller (ft)	342	7384			
Bottom Logger (ft)	342	7384			

Remarks and Equipment Summary

One: Toolstring

One: Remarks

Equip name length
LEH-QT 49.07
 LEH-QT

MP name Offset

EDTC-B: 45.58
8412

EDTH-B:
 8983

EDTG-A
 EDTC-B:
 8412

ASLT-B: 39.08
8073

ASLT-BB
 :8073



CTEM 42.08
 ACCZ 0.00
 HV 0.00
 Gamma Ray
 TelStar 39.08
 tus

CBL_U 32.55
 P

Main Pass logged in 10deg 6" resolution

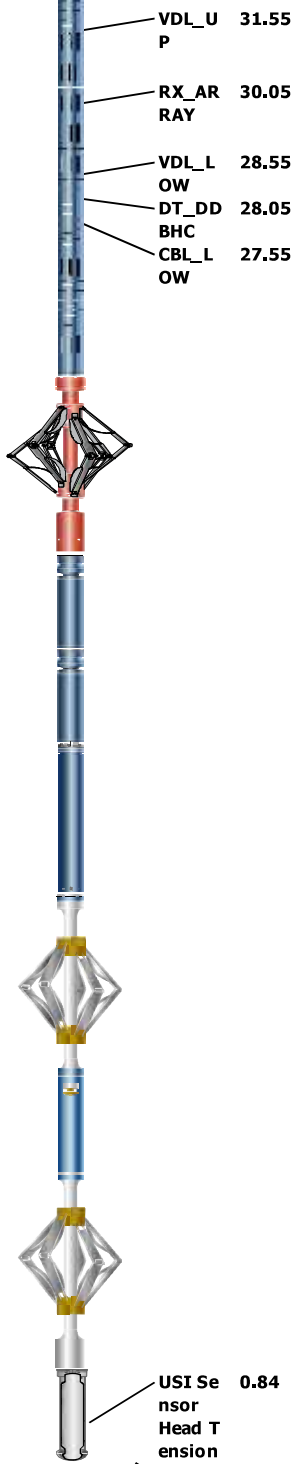
Repeat Pass logged 10deg 1.5" resolution

Log recorded without surface induced pressure from TD to 500 ft, 500 psi from 500 ft

Tool was run as per tool sketch

All logging intervals as per client request

Log run for cement evaluation purposes



CME-AF 24.43

AH-184 20.64
[2]

AH-184 18.64
[1]

USIT-E:9 16.64
00

ECH-MFA
:1818
USAC-A:
900
USIS-A:2
735
USSC-B
IBCS-A:8
15
FAR-SEN
SOR:4775
IBC-TX
NEAR-SE
NSOR:48
25
IBC-TX
USI-SEN
SOR:4825
IBC-TX
EMITTER
-SENSOR
:4776
IBC-TX

USI Se 0.84
nsor
Head T
ension
TOOL_ZERO

Lengths are in ft
Maximum Outer Diameter = 3.800 in
Line: Sensor Location, Value: Gating Offset
All measurements are relative to TOOL_ZERO

Depth Summary

One

Depth Measuring Device

Type	IDW-B
Serial Number	
Calibration Date	
Calibrator Serial Number	
Calibration Cable Type	
Wheel Correction 1	0
Wheel Correction 2	0

Tension Device

Type	CMTD-B/A		
Serial Number			
Calibration Date			
Calibrator Serial Number			
Number of Calibration Points	0		

Logging Cable			
Type	7-39PI-XXS		
Serial Number	Shop		
Length	28000.00 ft		
Conveyance Type	Wireline		
Rig Type			

One:Depth Control Parameters		Depth Control Remarks
Log Sequence	First Log In the Well	Schlumberger depth control procedures followed
Rig Up Length At Surface		IDW used as primary depth control system
Rig Up Length At Bottom		Z-Chart used as secondary depth control system
Rig Up Length Correction		
Stretch Correction		
Tool Zero Check At Surface		

USIT - Fluid Properties Measurement

Run Name	Pass Name	Start Depth(ft)	Stop Depth(ft)
Run 1	Log[4]:Up	6884.91	60.51

Fluid Velocity = "Automatic".
CFVL equals DFSL channel

Start Depth(ft)	Stop Depth(ft)	Start Value(us/ft)	End Value(us/ft)
-----------------	----------------	--------------------	------------------

Mud Impedance = "FreePipe Norm."
Free Pipe normalization zone is : 110.13m(361.32ft) to 112.10m(367.78ft)
MUD_N_FRP = 1.10
DFD = 1.08g/cm3(9.00lbm/gal)
CZMD median computed in free pipe normalization interval = 1.65 MRayl

Start Depth(ft)	Stop Depth(ft)	Start Value(Mrayl)	End Value(Mrayl)
-----------------	----------------	--------------------	------------------

One

IBC VDL WIDE

Pass Summary

Run Name	Pass Objective	Direction	Top	Bottom	Start	Stop	DSC Mode	Depth Shift	Include Parallel Data
One	Log[4]:Up	Up	60.51 ft	6884.91 ft	31-Mar-2022 9:02:27 AM	31-Mar-2022 10:56:37 AM	OFF	5.73 ft	Yes

All depths are referenced to toolstring zero

Log	Company: Occidental Petroleum	Well: Bierig-UPRR 42-35
	One: Log[4]:Up:S007	

Description: USI IBC VDL WIDE Format: Log (IBC VDL WIDE) Index Scale: 2 in per 100 ft Index Unit: ft Index Type: Measured Depth Creation Date: 31-Mar-2022 20:52:38

TIME_1900 - Time Marked every 60.00 (s)

Gamma Ray
(ECGR_EDT
C) EDTC-B
0 gAPI 150

Casing Collar
Locator

Locator
Ultrasonic
(CCLU)
USIT-E

-19 in 1

Annulus
Thickness
Minimum
(UATN)
USIT-E

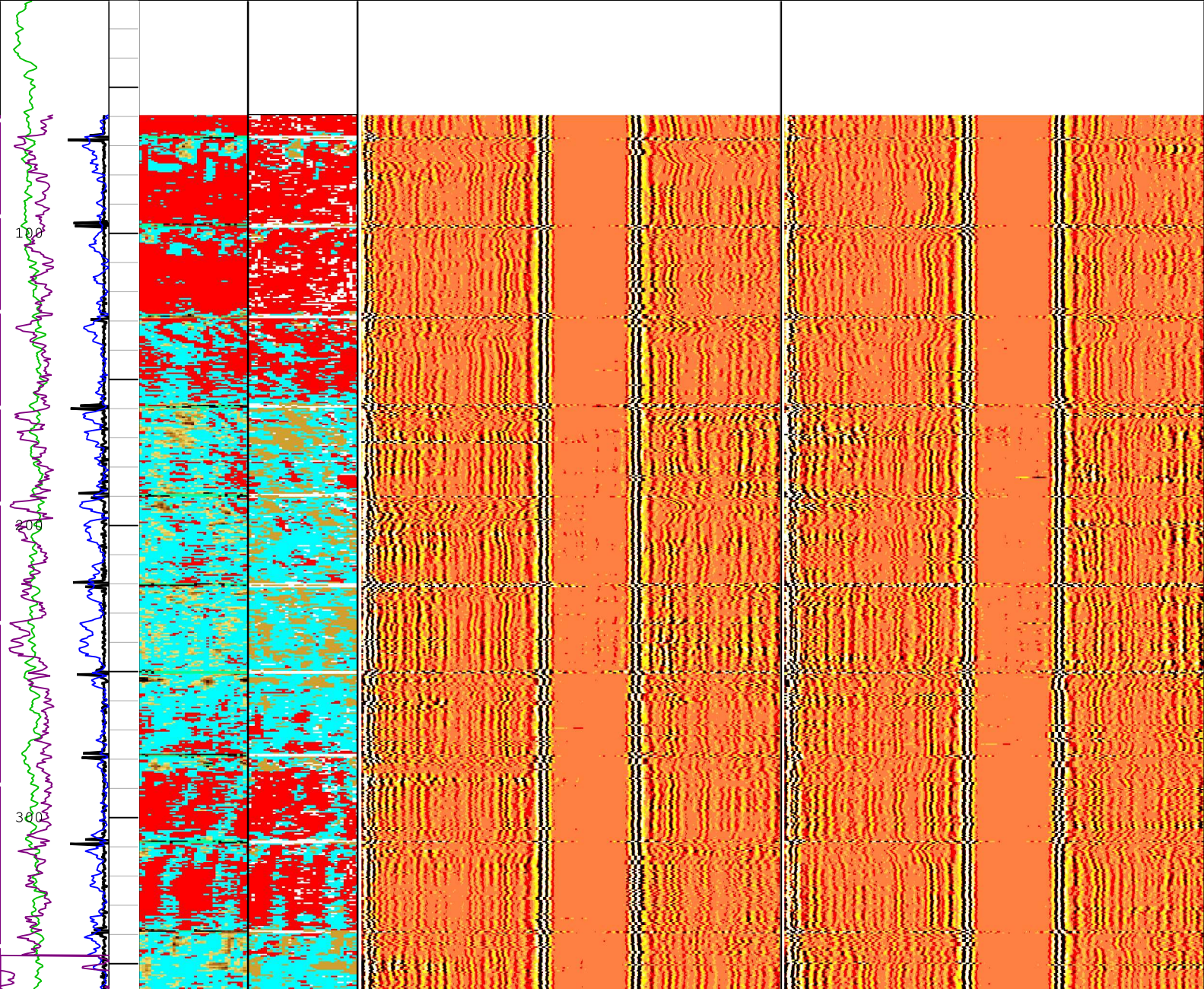
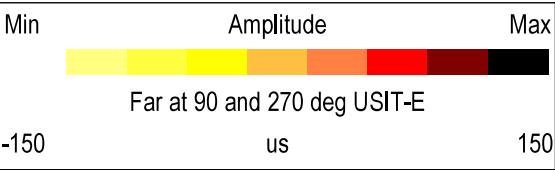
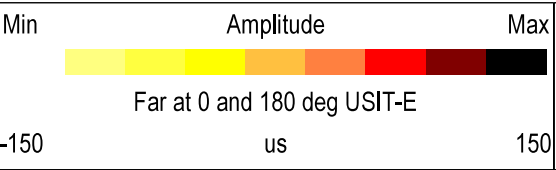
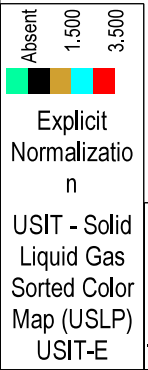
0 ft 100

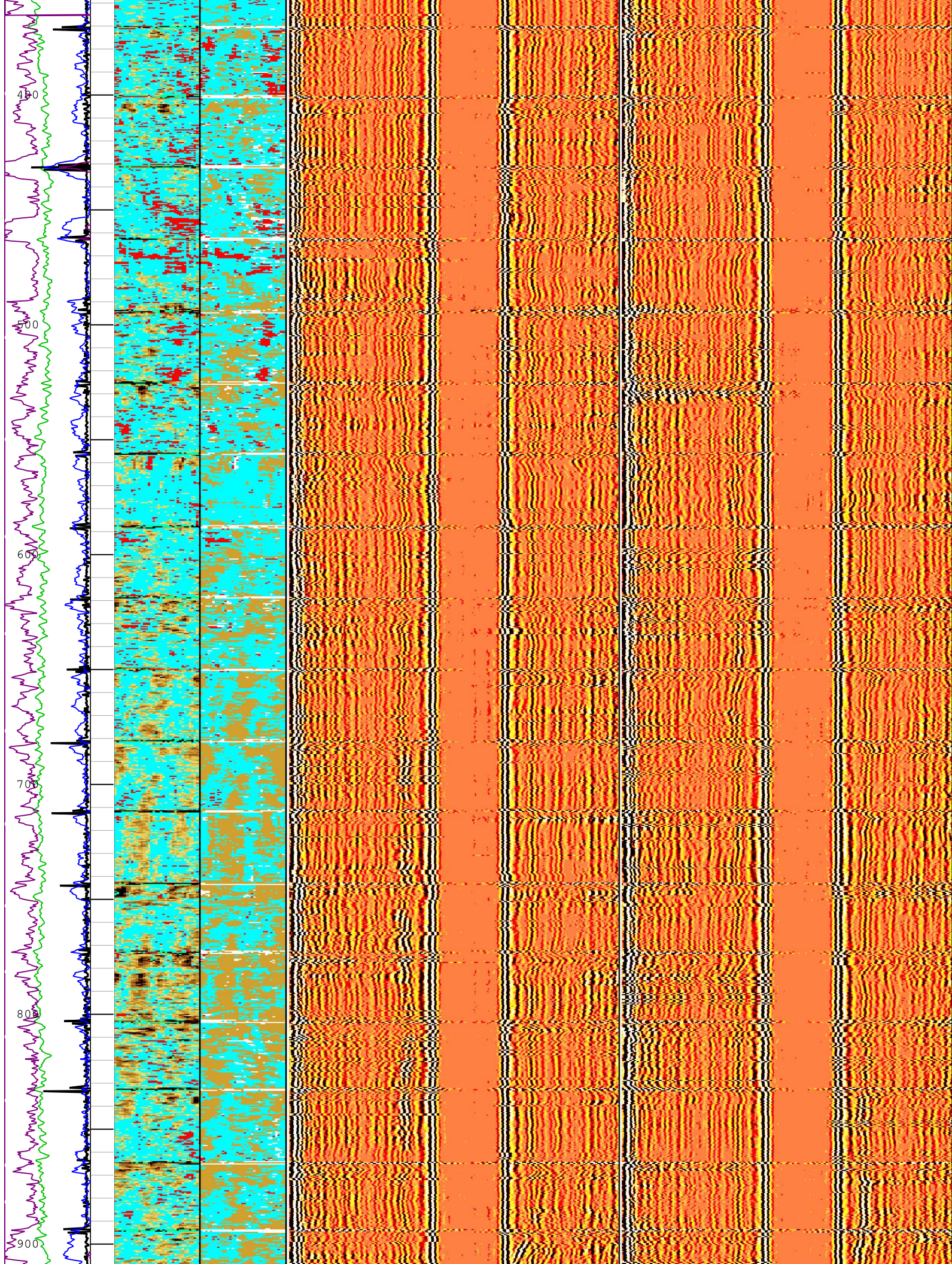
Casing
Centering
Percentage
(U-USIT_UC
CP) USIT-E

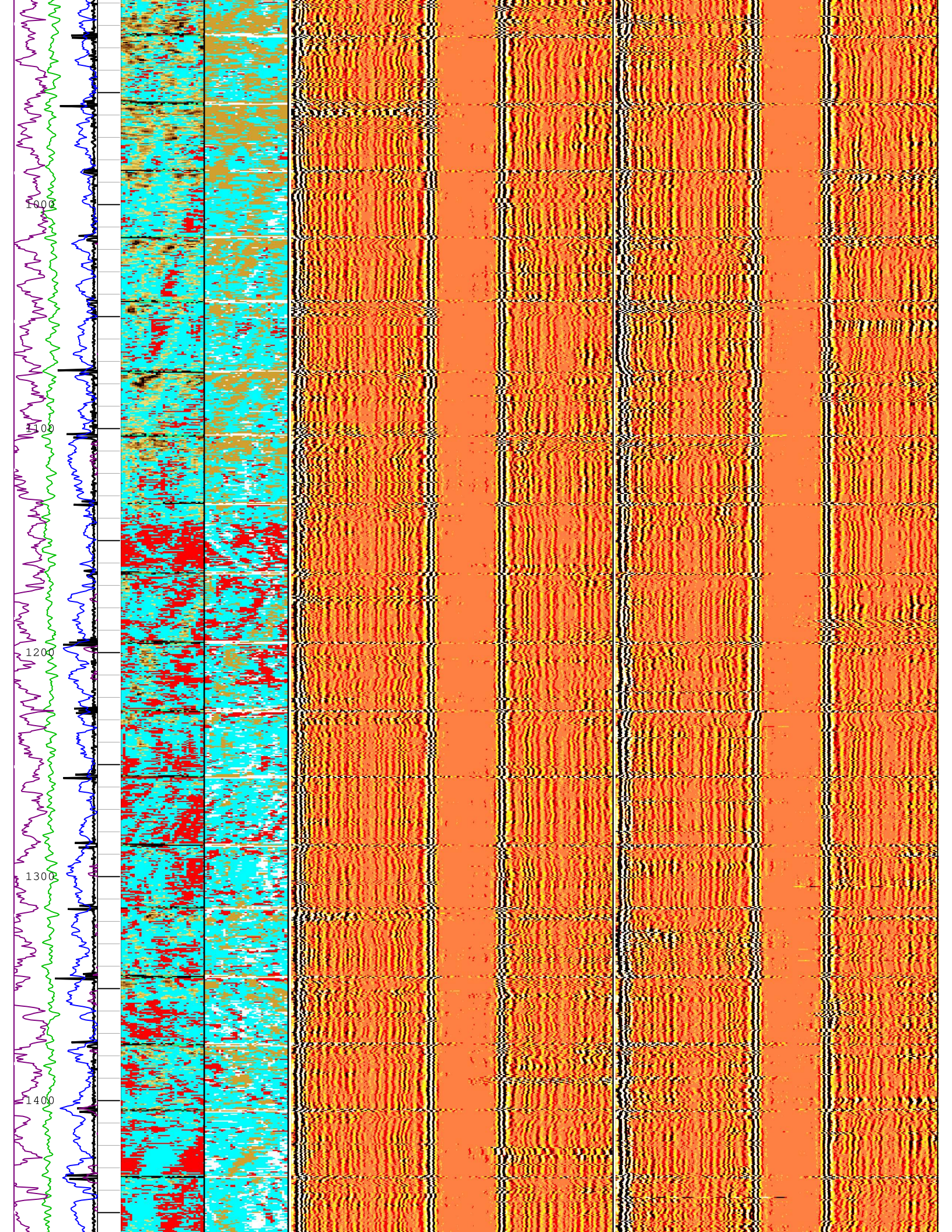
0 % 100

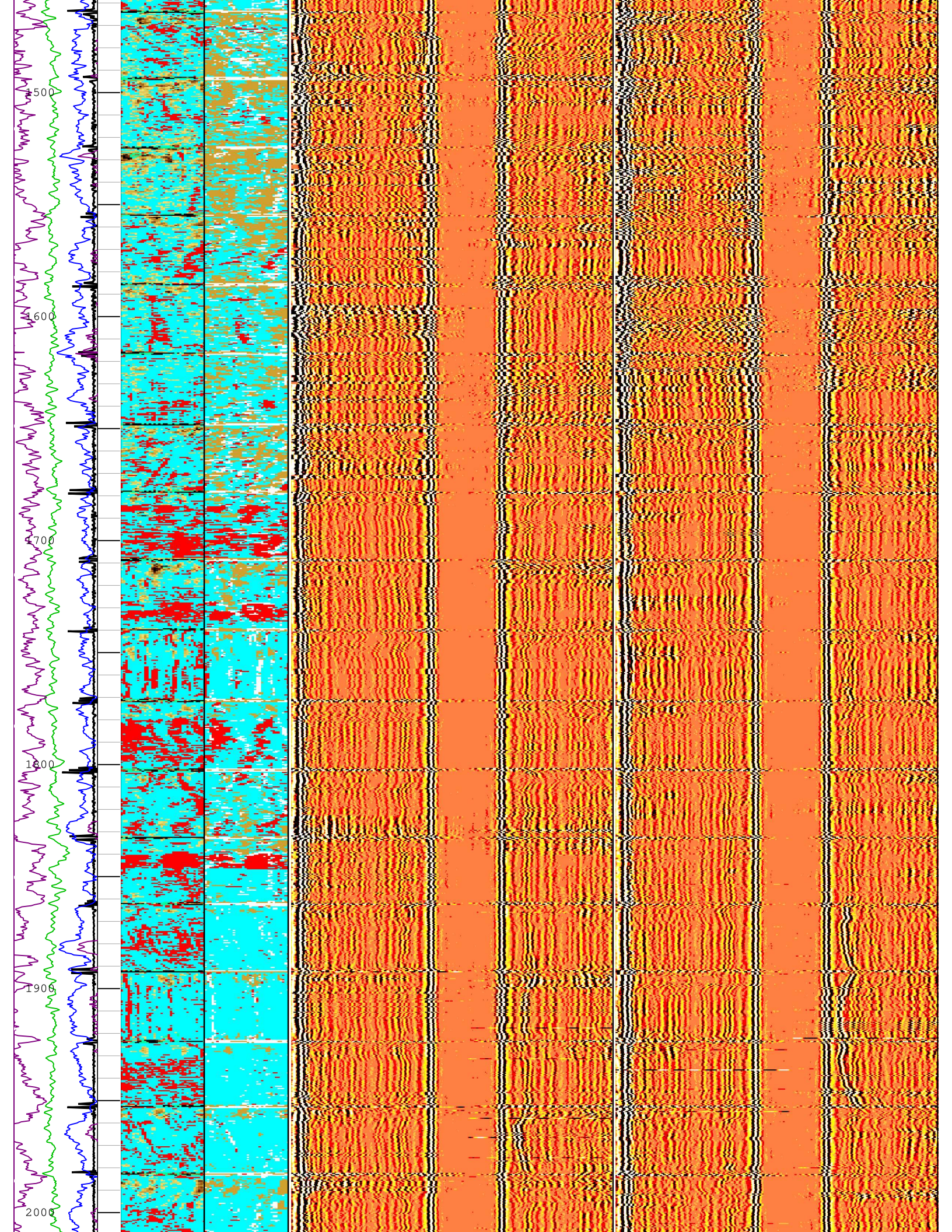
Annulus
Thickness
Minimum
(UATN)
USIT-E

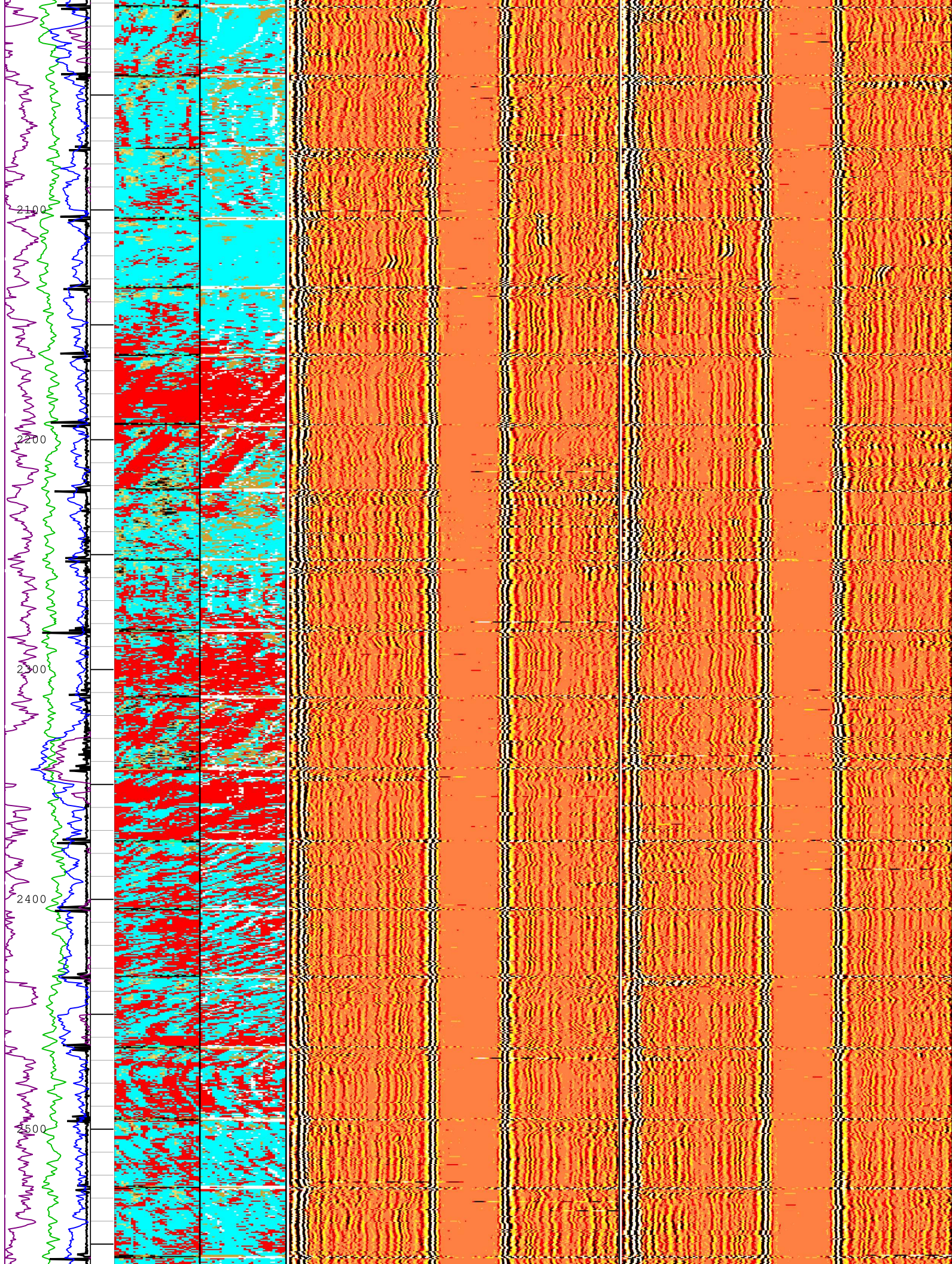
0 ft 0.1

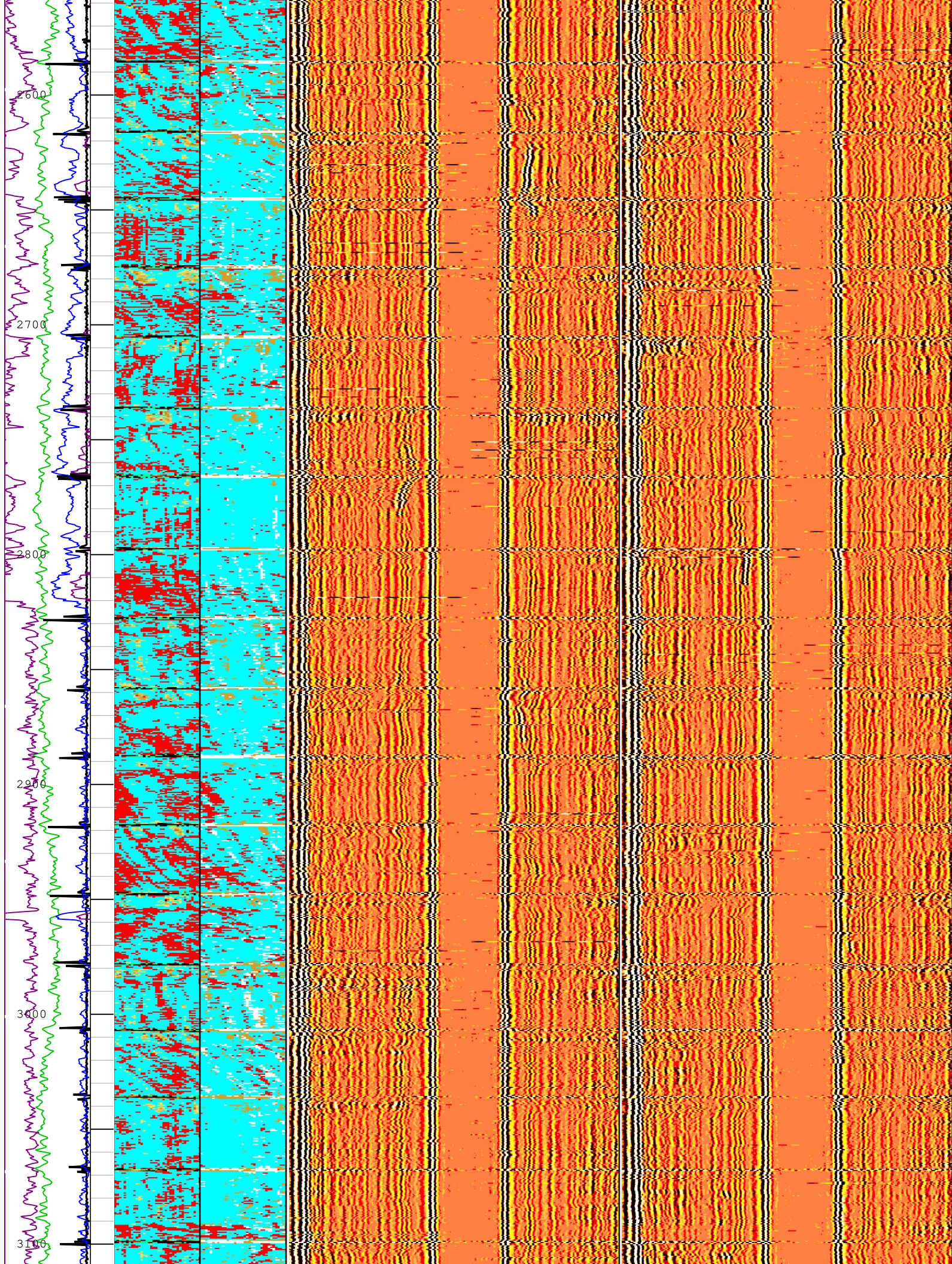


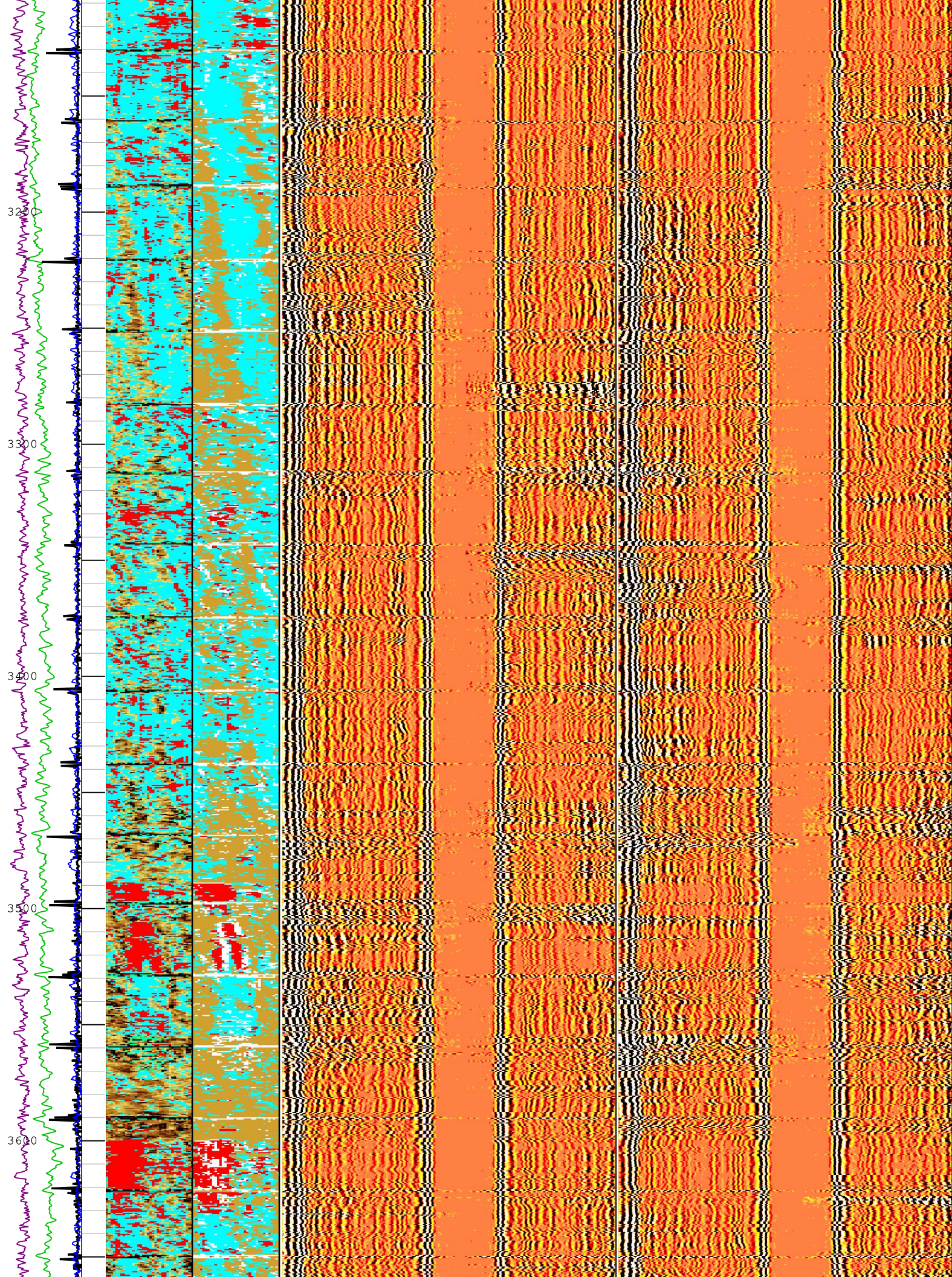


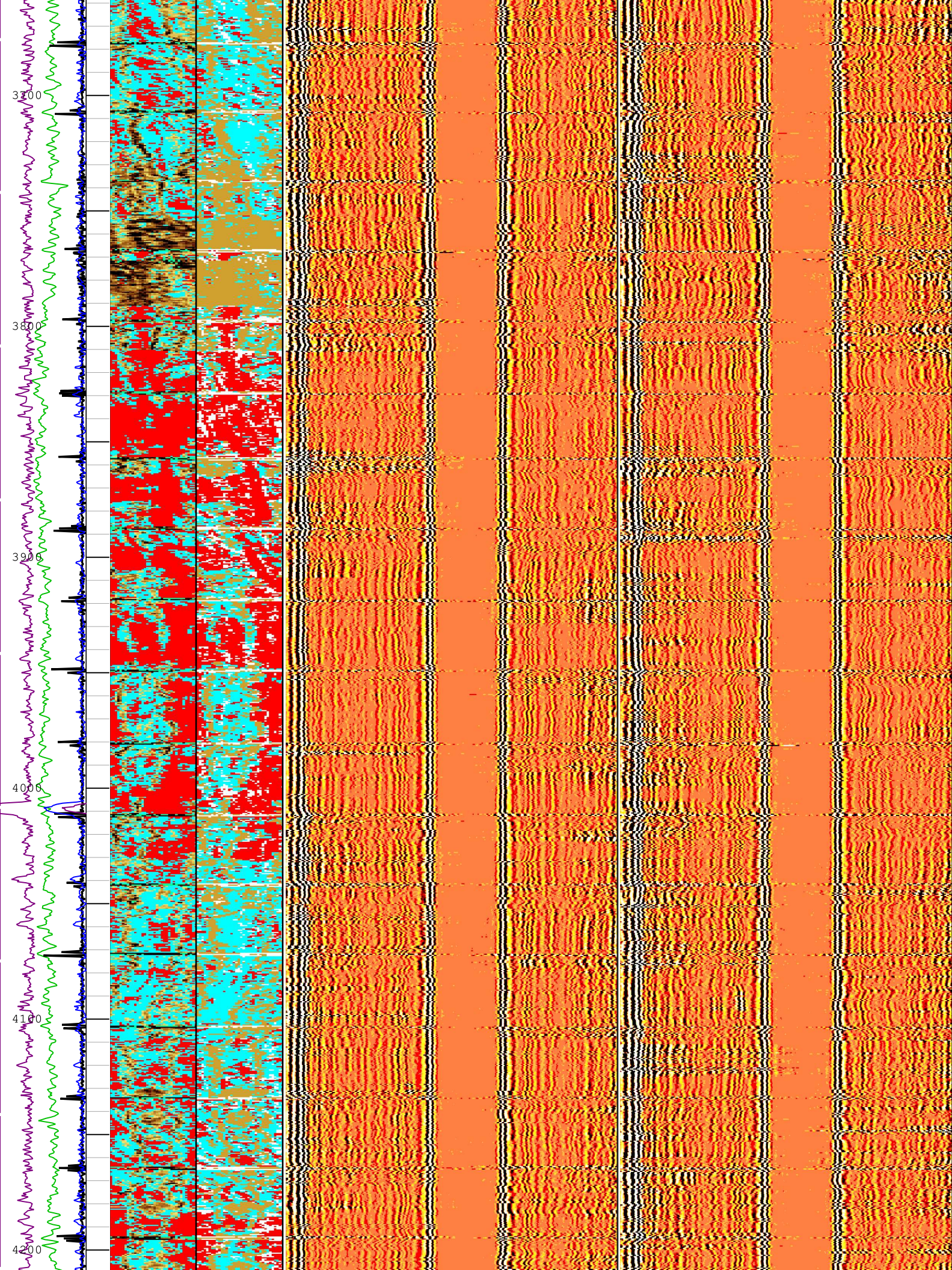


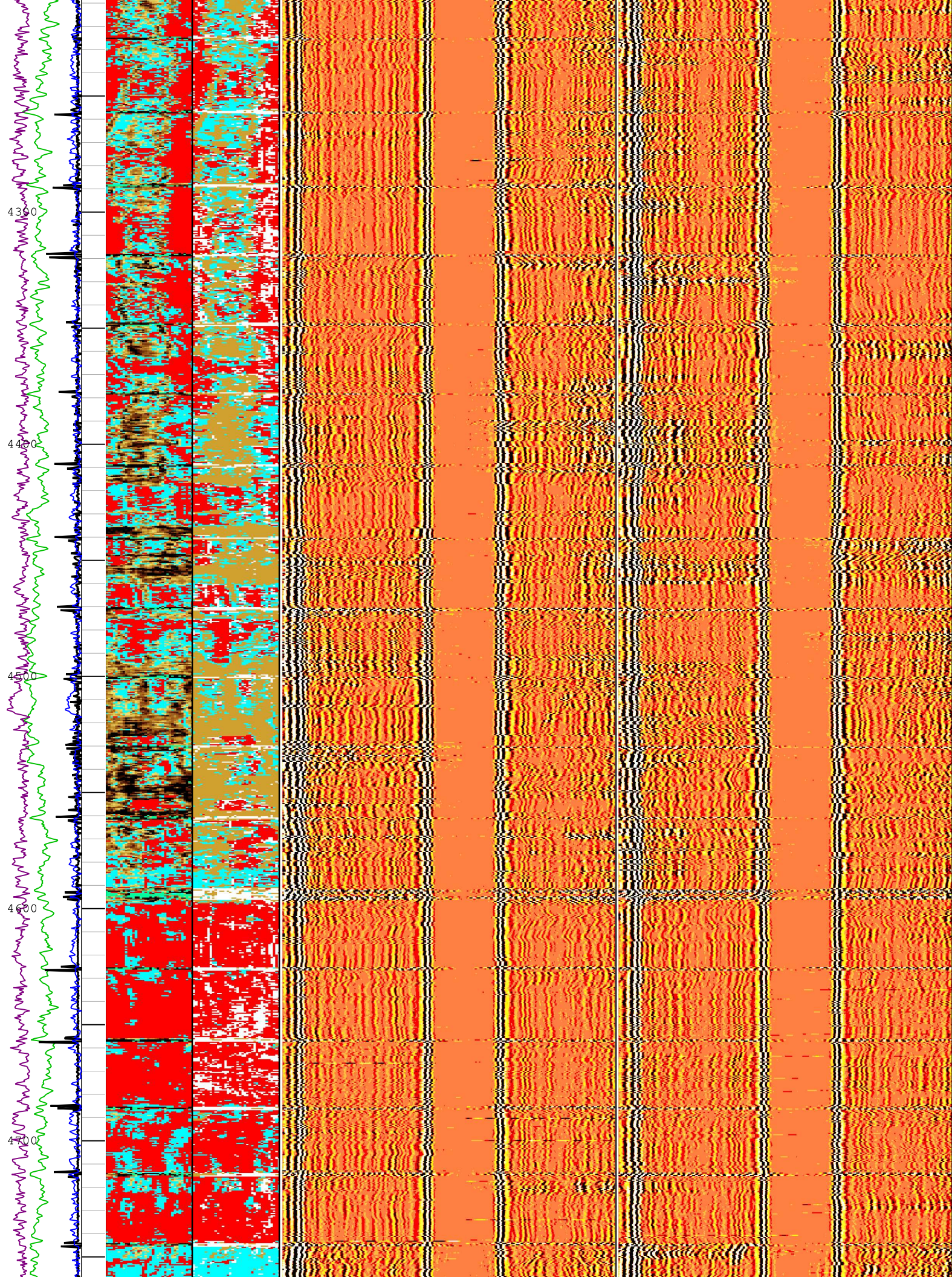


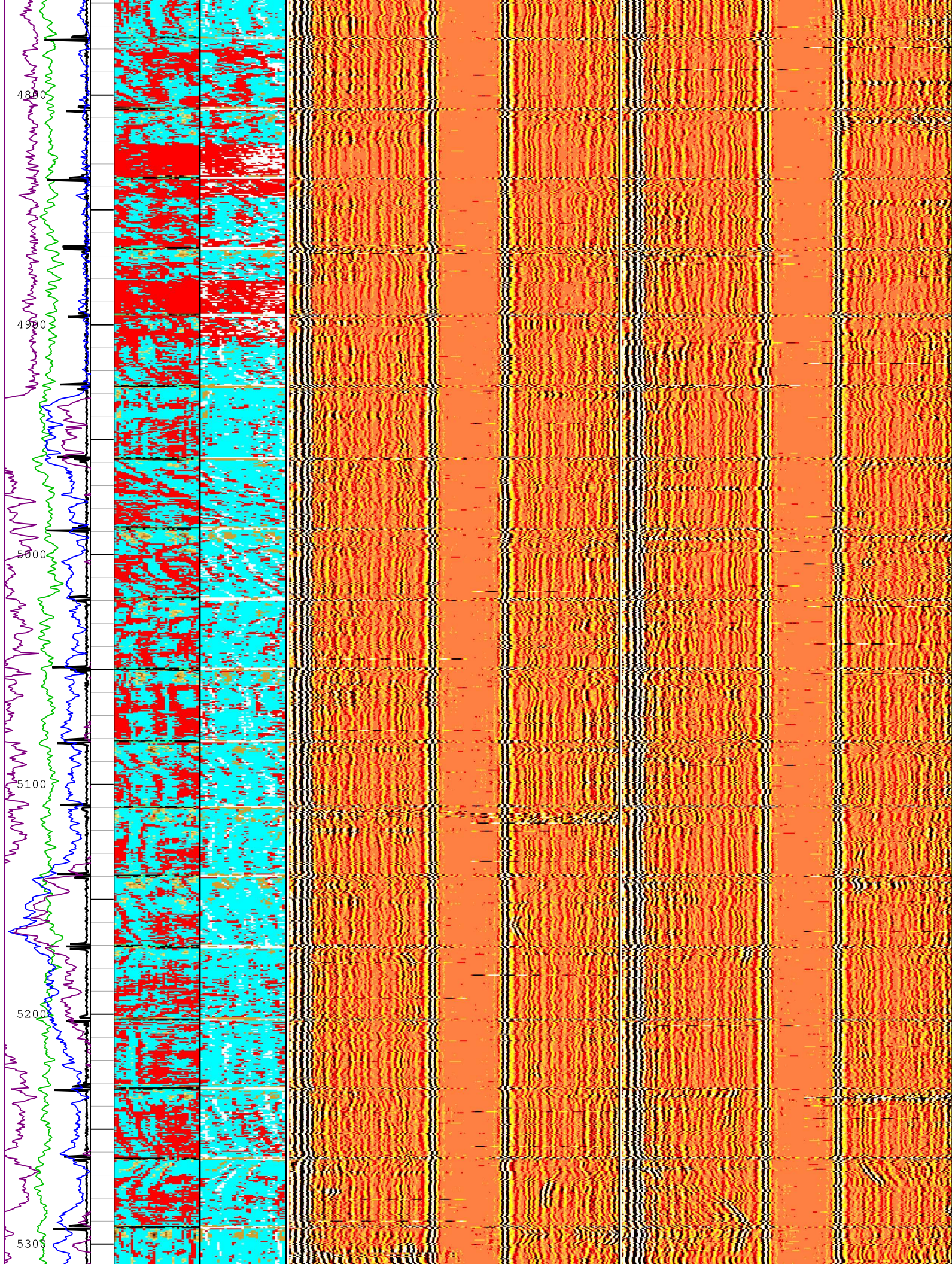


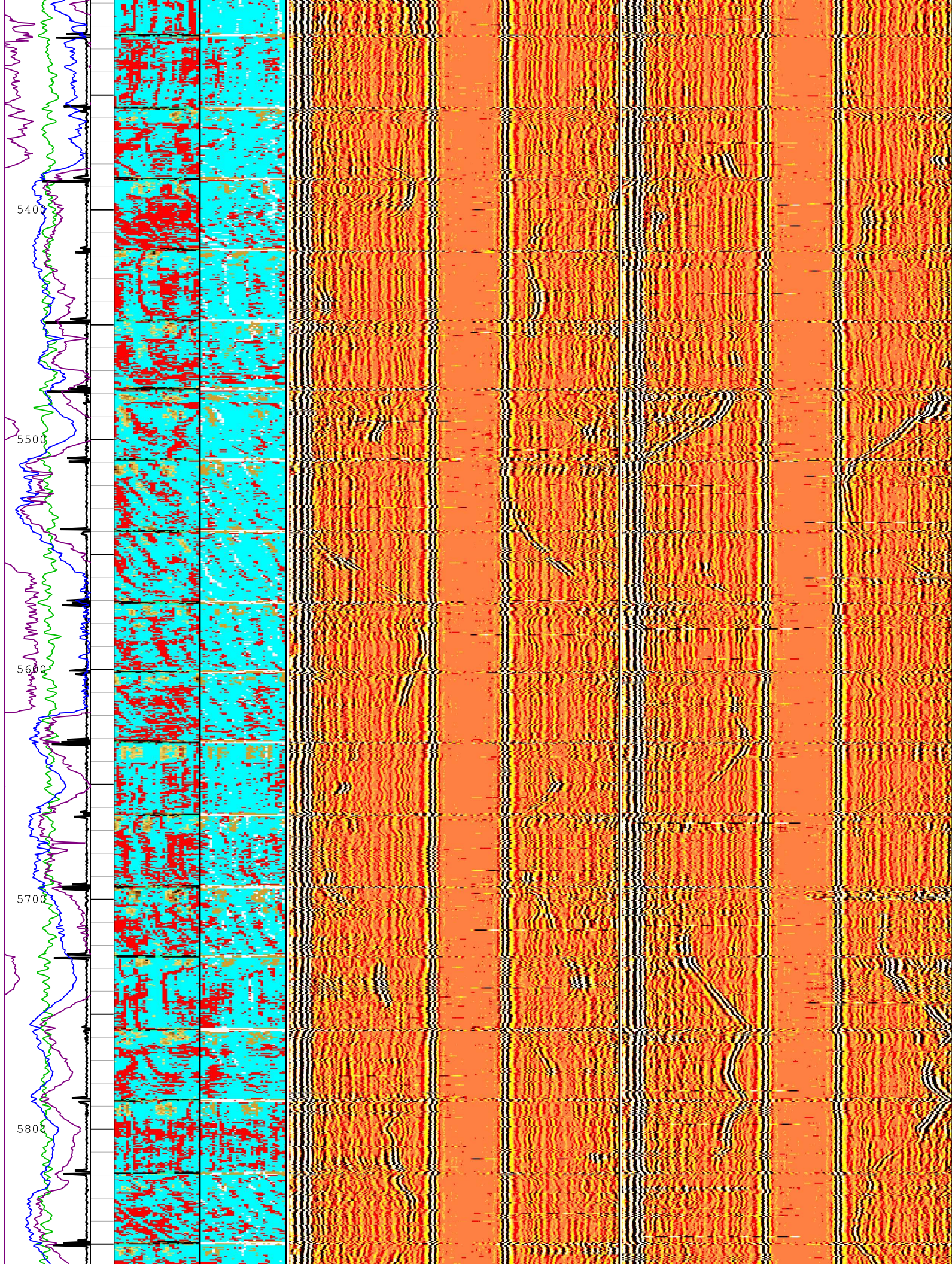


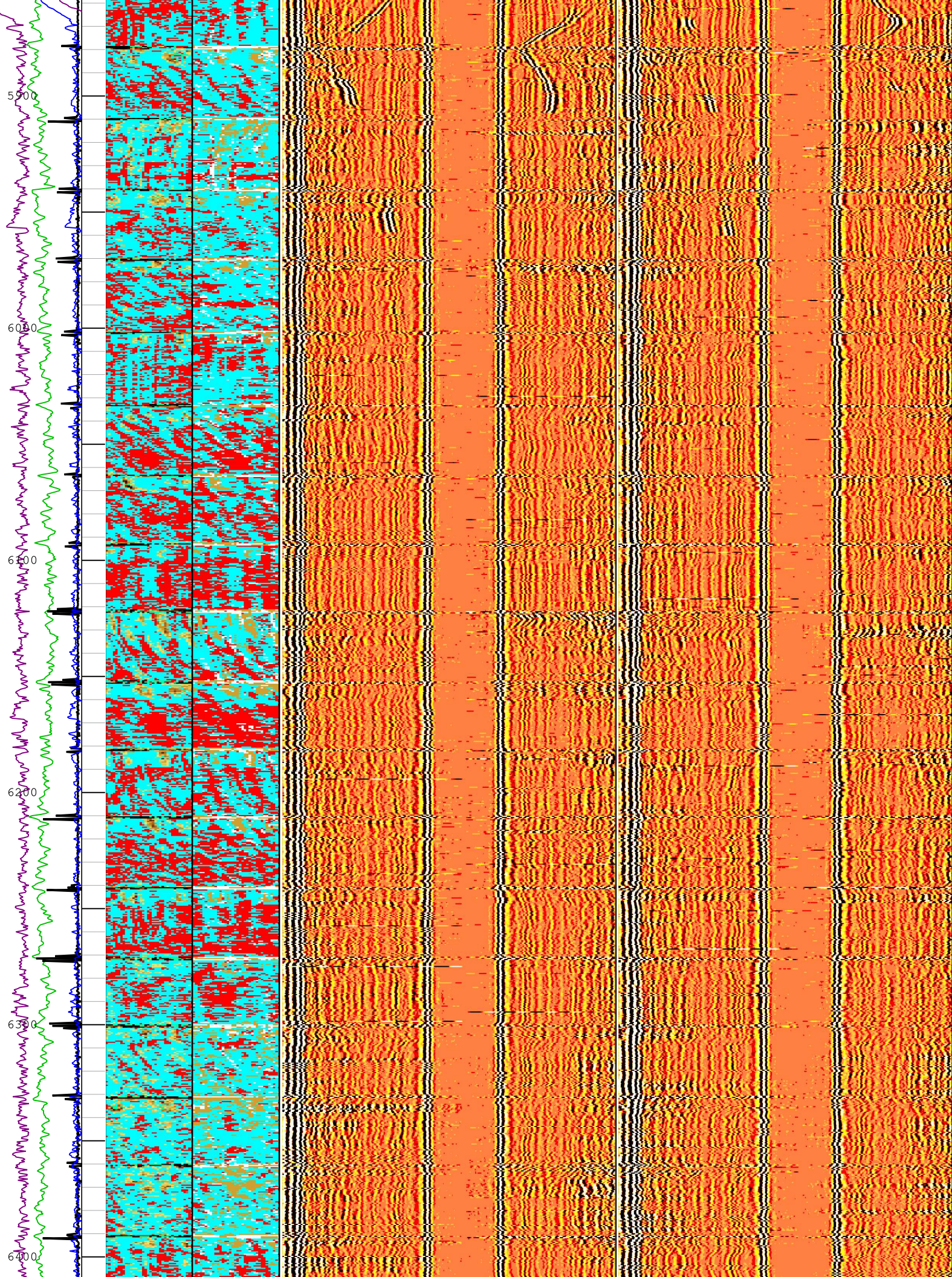


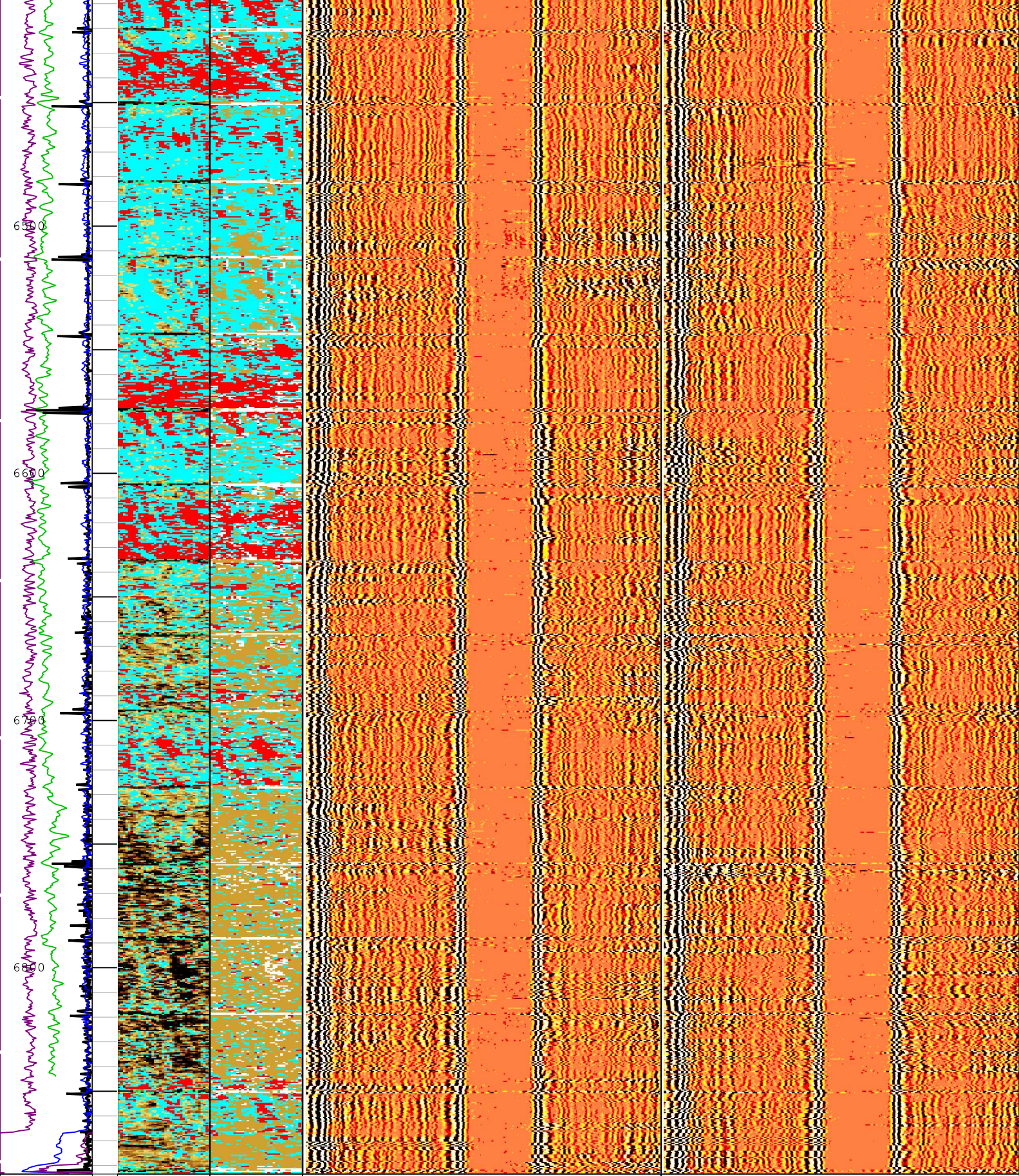












Gamma Ray
(ECGR_EDT
C) EDTC-B
0 gAPI 150

Absent
3.090
5.054
7.018
Custom
Normalizatio
n
USIT -
Acoustic

Absent
1.500
3.500
Explicit
Normalizatio
n
USIT - Solid
Liquid Gas
Sorted Color

Min Amplitude Max
Far at 0 and 180 deg USIT-E
-150 us 150

Min Amplitude Max
Far at 90 and 270 deg USIT-E
-150 us 150

Casing Collar
Locator
Ultrasonic
(CCLU)

USIT -
Acoustic

USIT - Solid
Liquid Gas
Sorted Color

USIT-E
-19 in 1
Annulus Thickness Minimum (UATN) USIT-E
0 ft 100
Casing Centering Percentage (U-USIT_UC CP) USIT-E
0 % 100
Annulus Thickness Minimum (UATN) USIT-E
0 ft 0.1

Impedance (AIBK) USIT-E
Mrayl
Cased Hole Map (USLP) USIT-E

TIME_1900 - Time Marked every 60.00 (s)

Description: USI IBC VDL WIDE Format: Log (IBC VDL WIDE) Index Scale: 2 in per 100 ft Index Unit: ft Index Type: Measured Depth Creation Date: 31-Mar-2022 20:52:38

One
IBC VDL Wide

Pass Summary

Run Name	Pass Objective	Direction	Top	Bottom	Start	Stop	DSC Mode	Depth Shift	Include Parallel Data
One	Log[2]:Up	Up	751.97 ft	1009.08 ft	31-Mar-2022 8:16:44 AM	31-Mar-2022 8:25:43 AM	OFF	1.74 ft	Yes

All depths are referenced to toolstring zero

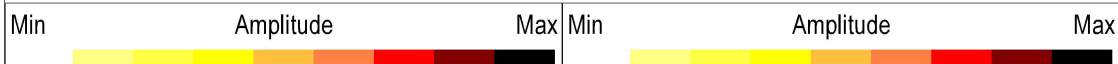
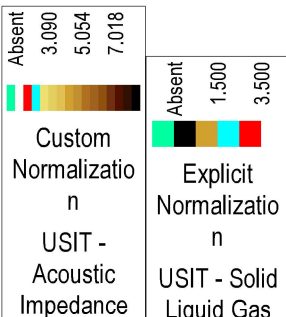
Log Company: Occidental Petroleum Well: Bierig-UPRR 42-35 One: Log[2]:Up:S007

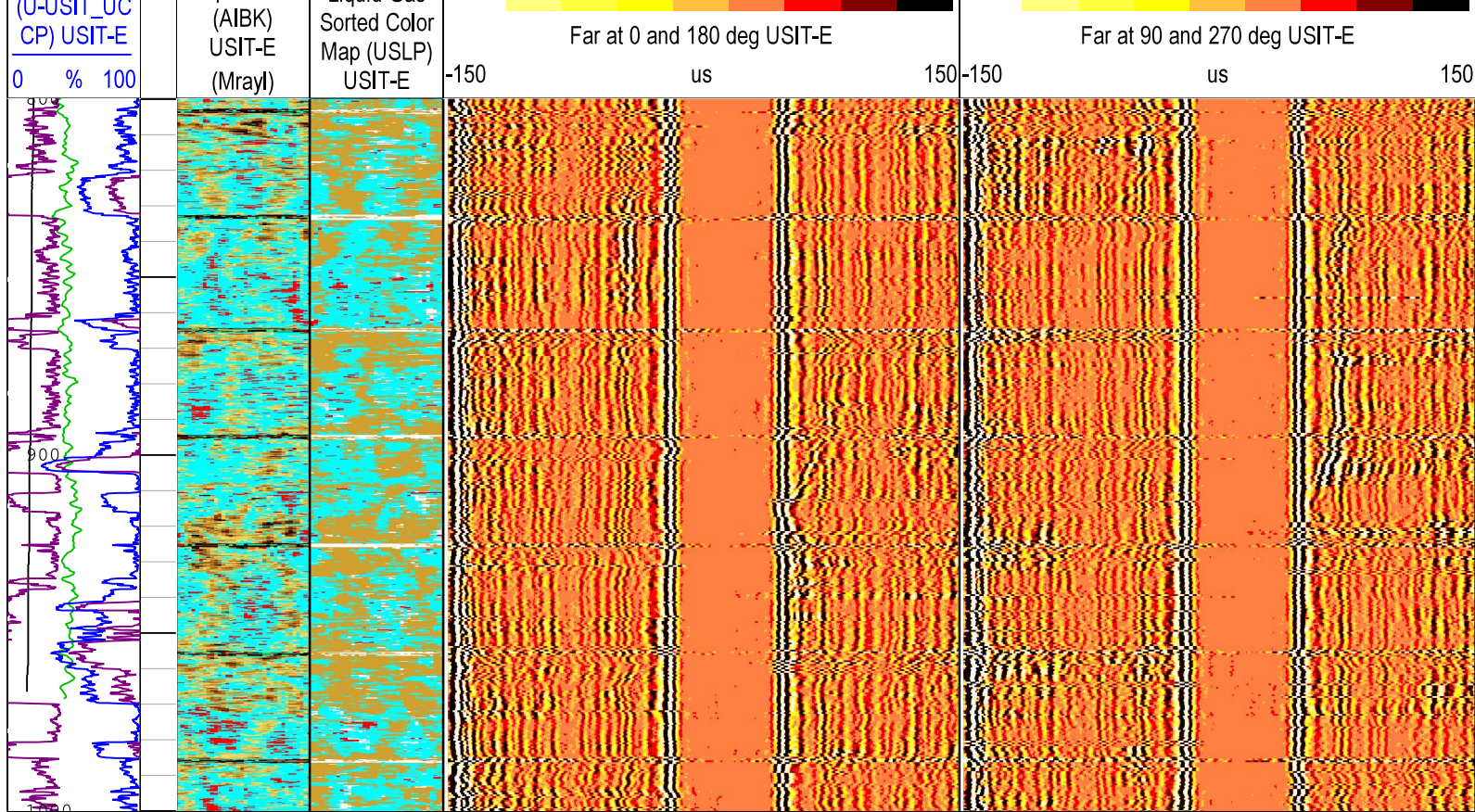
Description: USI IBC VDL WIDE Format: Log (IBC VDL WIDE) Index Scale: 2 in per 100 ft Index Unit: ft Index Type: Measured Depth Creation Date: 31-Mar-2022 20:52:44

TIME_1900 - Time Marked every 60.00 (s)

Gamma Ray (ECGR_EDT C) EDTC-B
0 gAPI 150
Cartridge Temperature (CTEM) EDTC-B
20 degF 220

Annulus Thickness Minimum (UATN) USIT-E
0 ft 0.1
Casing Centering Percentage (U-USIT_UC CP) USIT-E





Gamma Ray
(ECGR_EDT
C) EDTC-B
0 gAPI 150

Cartridge
Temperature
(CTEM)
EDTC-B
20 degF 220

Annulus
Thickness
Minimum
(UATN)
USIT-E
0 ft 0.1

Casing
Centering
Percentage
(U-USIT_UC
CP) USIT-E
0 % 100

Absent 3.090 5.054 7.018

Custom Normalization

USIT - Acoustic Impedance (AIBK) USIT-E (Mrayl)

Absent 1.500 3.500

Explicit Normalization

USIT - Solid Liquid Gas Sorted Color Map (USLP) USIT-E

TIME_1900 - Time Marked every 60.00 (s)

Company: Occidental Petroleum

Schlumberger

Well: Bierig-UPRR 42-35

Field: Wattenberg

County: Weld

State: Colorado

Isolation Scanner

VDL Wide

Gamma Ray - CCL