

City and County of Denver

Date: 6/26/2020
 Prepared by: RAB
 Well Name: Kallsen 7
 Field: Third Creek
 Legal: SWNE Sec. 18 T2S R65W

Note: Paraffin is heavy black

Geological tops
 D sd 8190
 J Sand 8,244

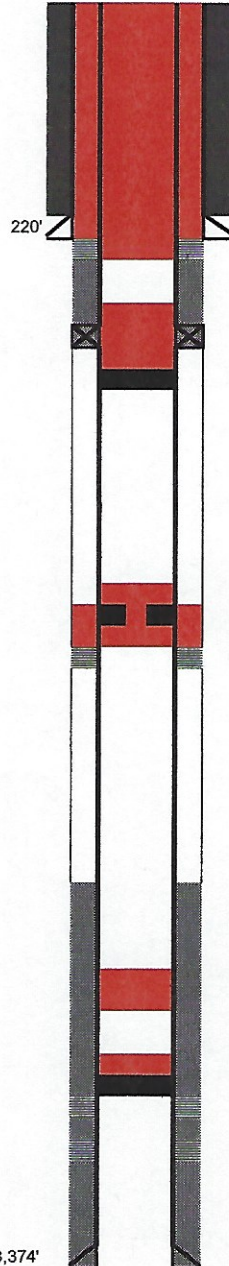
County: Denver
 State: Colorado
 GL: 5,259'
 KB: 5,267'
 Stick up: 1.5'
 KBC: 6.5'

Hole Size: 12 1/4"
 Surface Casing: 8 5/8" 24# ST&C
 Cement Volume: 150 sx G +3% CaCl

API: 05-031-06433
 Spud date: 2/10/1972
 Completion date: 3/15/1972
 Producing zone: J Sand
 MIT: Jul-20

WH: 7 1/16" 2M
 Top flange: TH68

Surface Casing Shoe



Perf TOC pump cmt inside and outside of csg (min 100 sx)

TOC ? Will Run CBL

Howco DV 1635'

Cement
 2nd stage 350 sx 50/50/ Poz w/ 2% gel & 10% salt

CICR 3,220'
 Pump 40 sx thru and leave 10 sx on top
 Perf 3,270'

Hole Size 7 7/8 "

Production Casing

260 jts 5 1/2 17# N-80 8rd

Cement
 1st stage 150 sx 50/50/ Poz w/ 2% gel & 10% salt 1% CFR-2

TOC ? Will Run CBL

15 sx 7,350 - 7,450' if cement in annulus
 Otherwise, will perf 7,450', set CICR 7,400'
 pump 40 sx thru ret and leave 15 sx on top

CIBP 8,150' w/ 2 sx cmt

Treatment

acid - 1000 gal 15% MCA
 Dowell frac
 6,000 gal crude oil pad
 30,000 gelled condensate w/
 9,000# 20/40 sd
 11,500# 10/20 sd
 2,500# 12/20 Ucar Pac
 flush w condensate

Perforations

J Sand 8,250 - 8,280'
 2 SPF

AIR-41 bpm
 ATP-4600 psia
 ISIP-3600 psia
 15 min-3200 psia

Csg pt 8,374'
 TD 8,375'

PBTD 8,330'