

July 8, 2021

Kathy Vertiz
Contract EHS Specialist
Caerus Oil and Gas
143 Diamond Avenue
Parachute, CO 81635

RE: P32 1096 Well Pad Final Reclamation Status

Dear Kathy,

Per your request, WestWater biologists have completed vegetation monitoring for the above referenced reclaimed location. We utilized the Bureau of Land Management's (BLM) Assessment, Inventory, and Monitoring (AIM) strategy for data collection and the resulting data has been entered into the Database for Inventory, Monitoring and Assessment (DIMA). In addition to monitoring the reclaimed area we selected and inventoried a reference site for this location.

Attached you will find the results summary and photos of the reclaim and reference areas. Based on the information we collected this year and our understanding of BLM and Colorado Oil & Gas Conservation Commission (COGCC) final reclamation requirements, this site meets the 80% reference criteria for Final Abandonment Notice.

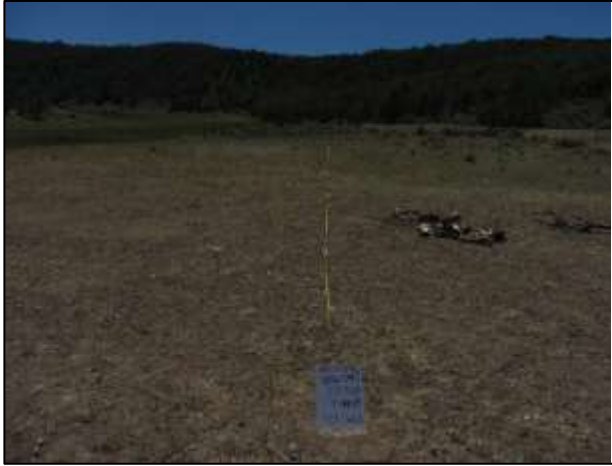
If there is any additional information we can provide or clarify please contact me.

Sincerely,



Environmental Scientist/Project Manager

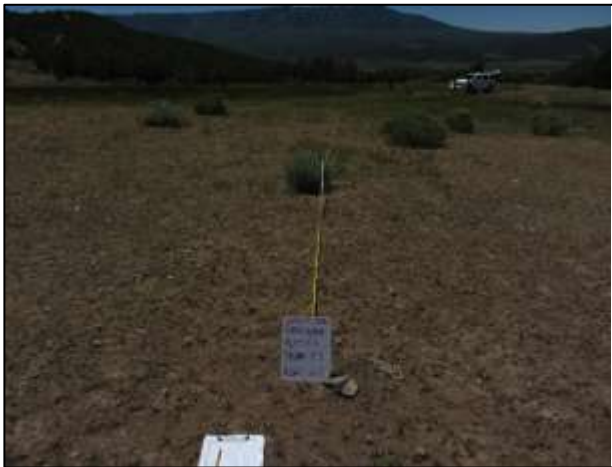
P32 1096 Well Pad



Reclaim Transect 1



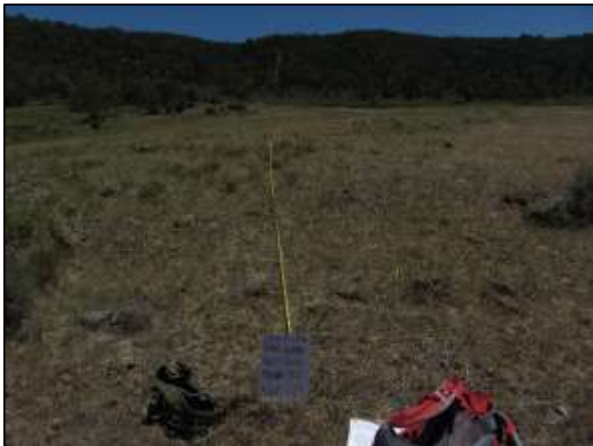
Reclaim Transect 2



Reclaim Transect 3



Reference Transect 1



Reference Transect 2

Percent Cover Summary Table		
	Reference Site	Reclaim Site
% Foliar Cover	47.0	56.0
% Basal Cover	1.0	0.0
% Bare ground	41.3	36.7
% Desirable Foliar Cover	23.5	28.0
% Desirable of Reference Site		119
80% Desirable of Reference?	Site meets 80% of reference criteria	

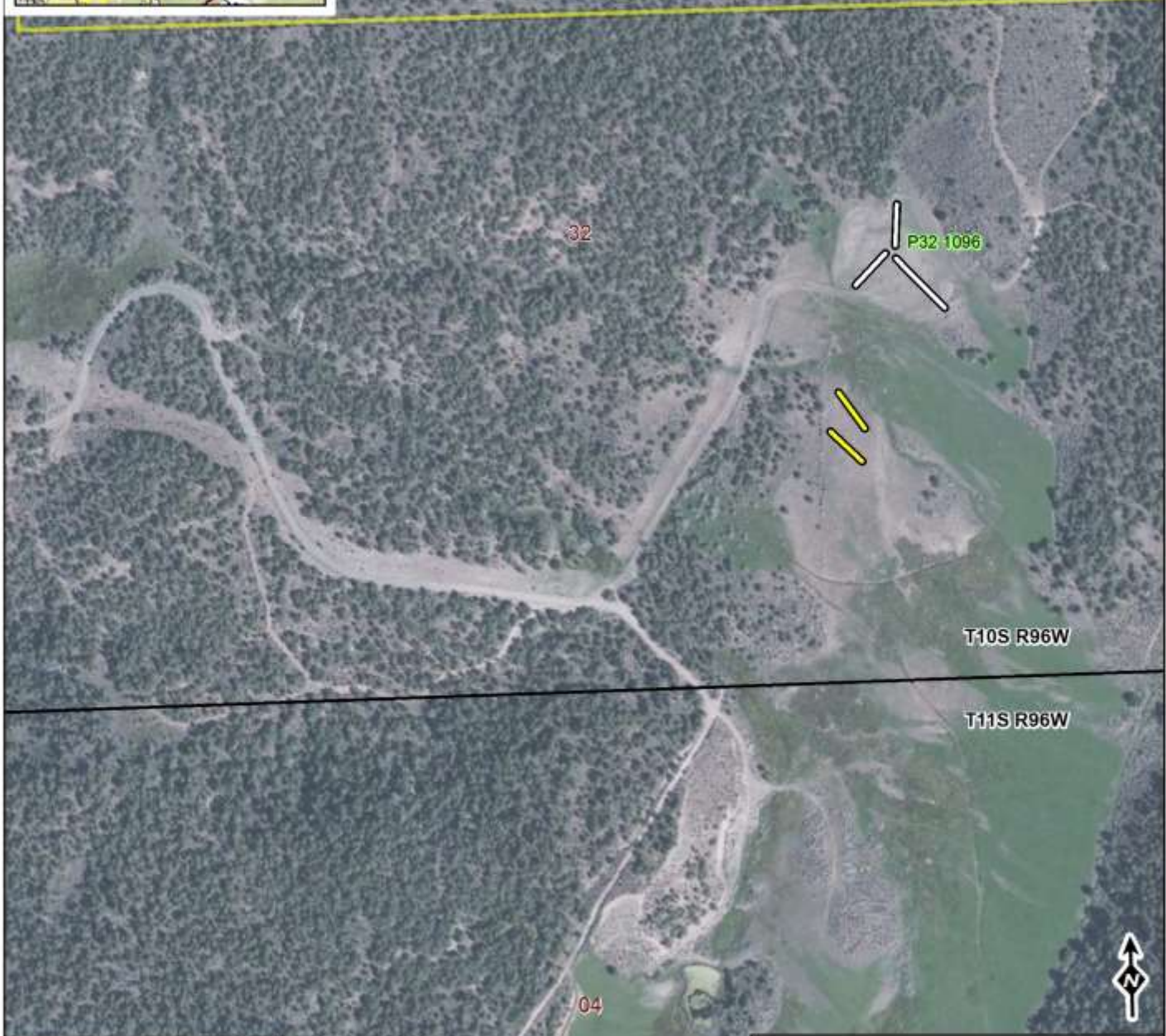
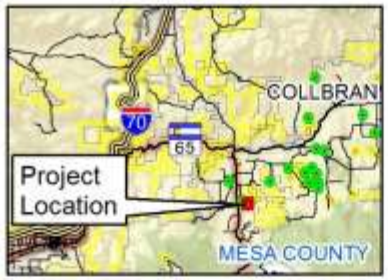
*Percent Foliar Cover represents all points hit along transect of specific species including lower canopy layers; thus, in some cases percent foliar cover can exceed 100%.

Final Reclamation Site Percent Foliar Cover by Species			
Caerus Oil and Gas			
Location:	P32 1096		
Date:	6/14/2021		
Plot:	Final Reclamation		
Scientific Name	Common Name	Foliar Cover	Basal Cover
Graminoids			
Aegilops cylindrica	jointed goatgrass	1.3	0
Agropyron desertorum	desert wheatgrass	3.3	0
Bromus inermis	smooth brome	10.0	0
Pascopyrum smithii	western wheatgrass	7.3	0.0
Poa bulbosa	bulbous bluegrass	18.0	0.0
Thinopyrum intermedium	intermediate wheatgrass	2.7	0
Grass cover subtotal		42.6	0
Desirable grass cover subtotal		23.3	0
Forbs/Succulents			
Alyssum alyssoides	pale madwort	3.3	0
Ceratocephala testiculata	curvseed butterwort	0.7	0
Chorispora tenella	crossflower	1.3	0
Convolvulus arvensis	field bindweed	0.7	0
Grindelia squarrosa	curlycup gumweed	2.7	0
Lepidium perfoliatum	clasping pepperweed	0.7	0
Scorzonera laciniata	cutleaf vipergrass	2.0	0
Forb cover subtotal		11.4	0
Desirable forb cover subtotal		2.7	0
Subshrubs/Shrubs			
Artemisia tridentata	big sagebrush	0.7	0
Ericameria nauseosa	rubber rabbitbrush	1.3	0
Shrub cover subtotal		2.0	0
Desirable shrub cover subtotal		2.0	0
Trees			
Desirable trees cover subtotal		0	

Bold = Desirable Species or Semi-desirable Species

Final Reclamation Site Percent Foliar Cover by Species			
Caerus Oil and Gas			
Location:	P32 1096		
Date:	6/14/2021		
Plot:	Reference		
Scientific Name	Common Name	Foliar Cover	Basal Cover
Graminoids			
Agropyron desertorum	desert wheatgrass	13.5	0
Bromus arvensis	field brome	4.0	0
Poa bulbosa	bulbous bluegrass	4.0	0
Thinopyrum intermedium	intermediate wheatgrass	3.0	0
Grass cover subtotal		24.5	0
Desirable grass cover subtotal		16.5	
Forbs/Succulents			
Alyssum alyssoides	pale madwort	5.0	0
Grindelia squarrosa	curlycup gumweed	4.0	0
Sarcobatus vermiculatus	greasewood	1.0	0
Scorzonera laciniata	cutleaf vipergrass	10.5	0
Forb cover subtotal		20.5	0
Desirable forb cover subtotal		5	0
Subshrubs/Shrubs			
Gutierrezia sarothrae	broom snakeweed	2.0	1
Shrub cover subtotal		2.0	0
Desirable shrub cover subtotal		2.0	0
Trees			
Desirable trees cover subtotal			0

Bold = Desirable Species or Semi-desirable Species



Legend

- Pad Transect
- Reference Transect

Pad Status

- Final Reclamation Monitoring
- Interim Reclamation Monitoring

BLM Field Office

P32 1096

Caerus Oil & Gas

Vegetation Monitoring 2021

WestWater Engineering
Consulting Engineers & Scientists

0 200 400 600
Feet