

Company: Occidental Petroleum Inc

Well: Camenisch 2-15

Field: Wattenberg

County: Weld State: Colorado

Isolation Scanner
VDL Wide
Gamma Ray - CCL

County: Weld
Field: Wattenberg
Location: NWNE Sec 15, T2N, R68W
Well: Camenisch 2-15
Company: Occidental Petroleum Inc

Location:	NWNE Sec 15, T2N, R68W	Elev.:	K.B. 4877.00 ft
	SHL: 470' FNL X 1795' FEL		G.L. 4865.00 ft
			D.F. 4876.00 ft
Permanent Datum:		Ground Level	Elev.: 4865.00 f
Log Measured From:		Kelly Bushing	12.00 ft above Perm. Datum
Drilling Measured From:		Kelly Bushing	
API Serial No.	05-123-23296	Section:	15
		Township:	2N
		Range:	68W

Logging Date	07-Apr-2022
Run Number	One
Depth Driller	8120.00 ft
Schlumberger Depth	8120.00 ft
Bottom Log Interval	7200.00 ft
Top Log Interval	50.00 ft
Casing Fluid Type	Water
Salinity	
Density	8.3 lbm/gal
Fluid Level	8.00 ft
BIT/CASING/TUBING STRING	
Bit Size	7.88 in
From	750.00 ft
To	8120.00 ft
Casing/Tubing Size	4.5 in
Weight	11.6 lbm/ft
Grade	L80
From	0.00 ft
To	8053.00 ft
Max Recorded Temperatures	205 degF
Logger on Bottom	Time 11-Apr-2022 10:00:00
Unit Number	Location: 9108 Ft Morgan
Recorded By	Ruobing Wu
Witnessed By	Oscar Molinar

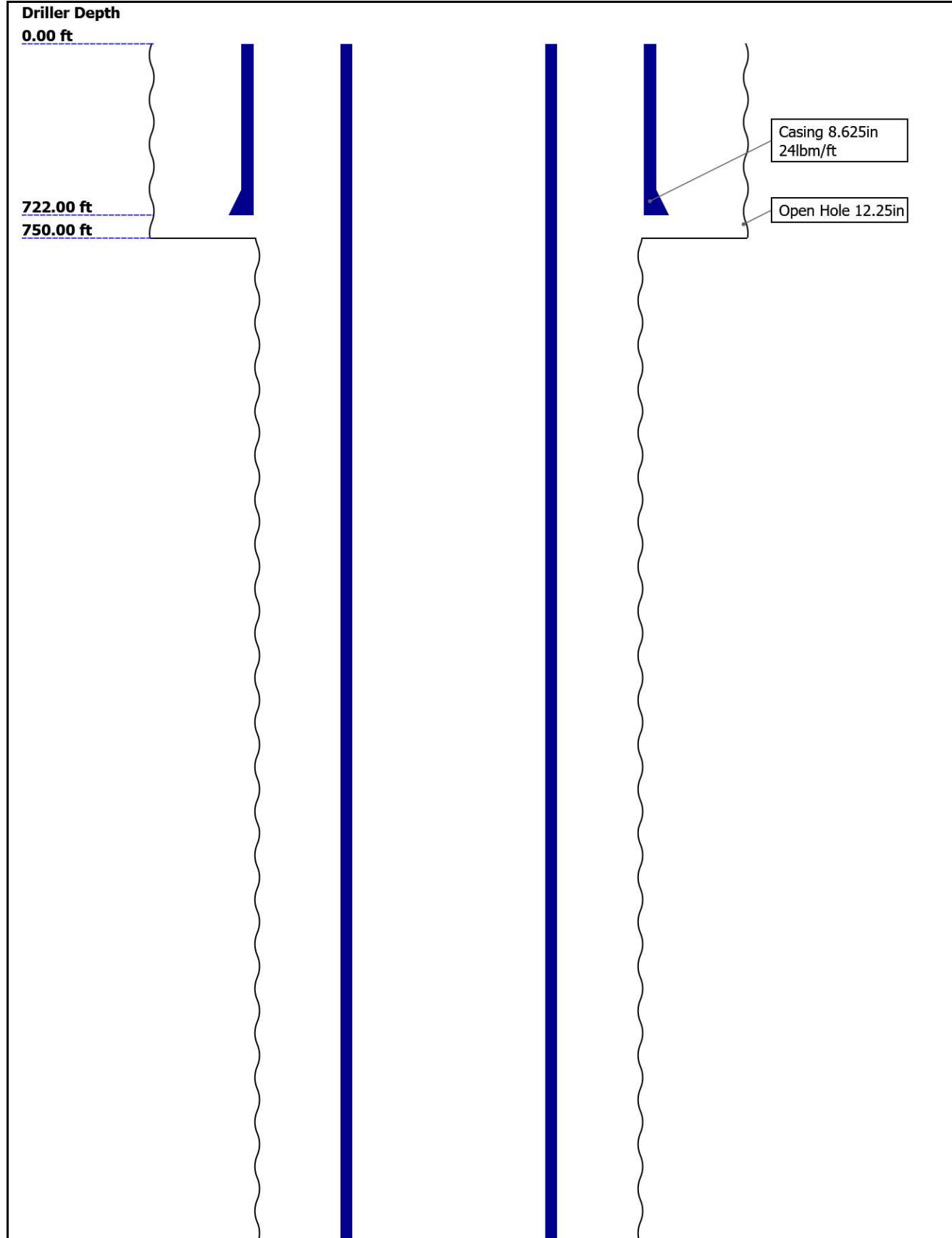
Disclaimer

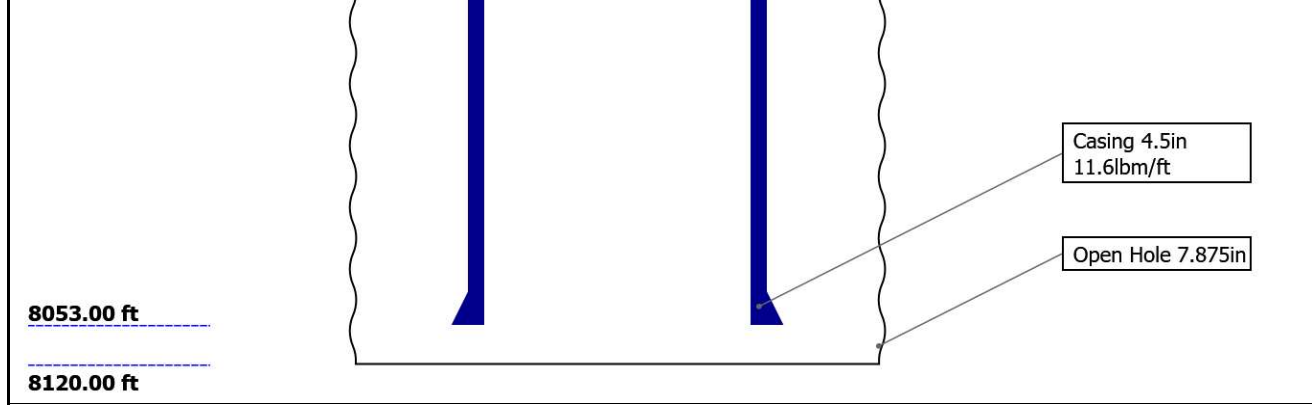
THE USE OF AND RELIANCE UPON THIS RECORDED-DATA BY THE HEREIN NAMED COMPANY (AND ANY OF ITS AFFILIATES, PARTNERS, REPRESENTATIVES, AGENTS, CONSULTANTS AND EMPLOYEES) IS SUBJECT TO THE TERMS AND CONDITIONS AGREED UPON BETWEEN SCHLUMBERGER AND THE COMPANY, INCLUDING: (a) RESTRICTIONS ON USE OF THE RECORDED-DATA; (b) DISCLAIMERS AND WAIVERS OF WARRANTIES AND REPRESENTATIONS REGARDING COMPANY'S USE AND RELIANCE UPON THE RECORDED-DATA; AND (c) CUSTOMER'S FULL AND SOLE RESPONSIBILITY FOR ANY INFERENCE DRAWN OR DECISION MADE IN CONNECTION WITH THE USE OF THIS RECORDED-DATA.

Contents

1. Header
2. Disclaimer
3. Contents
4. Well Sketch
5. Borehole Size/Casing/Tubing Record
6. Remarks and Equipment Summary
7. Depth Summary
8. IBC Fluid Properties Measurement
9. One IBC VDL WIDE
 - 9.1 Integration Summary
 - 9.2 Composite Summary
 - 9.3 Log (IBC VDL WIDE)
10. One IBC VDL Wide
 - 10.1 Integration Summary
 - 10.2 Composite Summary
 - 10.3 Log (IBC VDL WIDE)
11. Tail

Well Sketch





Borehole Size/Casing/Tubing Record

Bit					
Bit Size (in)	12.25	7.875			
Top Driller (ft)	0	750			
Top Logger (ft)	0	750			
Bottom Driller (ft)	750	8120			
Bottom Logger (ft)	750	8120			
Casing					
Size (in)	8.625	4.5			
Weight (lbm/ft)	24	11.6			
Inner Diameter (in)	8.097	4			
Grade	J55	L80			
Top Driller (ft)	0	0			
Top Logger (ft)	0	0			
Bottom Driller (ft)	722	8053			
Bottom Logger (ft)	722	8053			

Remarks and Equipment Summary

One: Toolstring

One: Remarks

Equip name length
LEH-QT 55.47
LEH-QT

MP name Offset



EDTC-B: 51.98
8397
EDTH-B:
9046
EDTG-A:
79136
EDTC-B:
8397

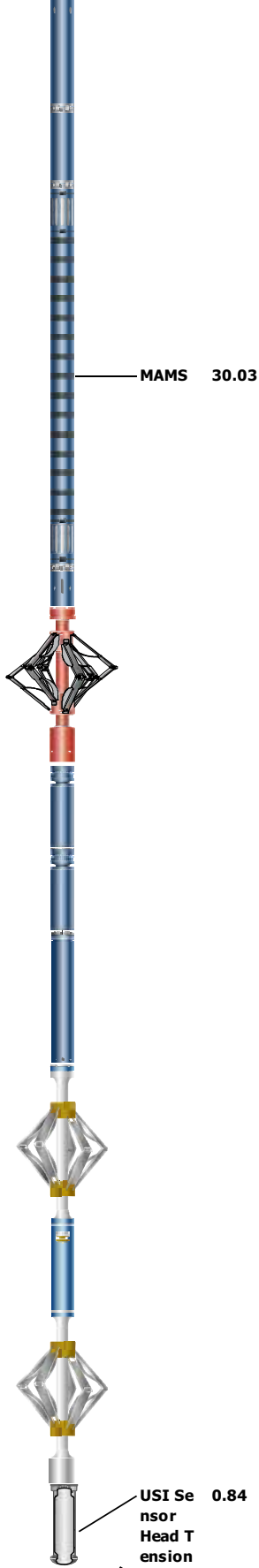
CTEM 48.48
ACCZ 0.00
HV 0.00
Gamma Ray 46.61
TelStar 45.48

MAST-B 45.48
:8574
ECH-SF:
8453
MAPC-BA
:8473
MAMS-BA
:8574

Main pass logged with 1000psi of surface induced pressure from TD to surface, Repeat pass logged without pressure

Tool was run as per tool sketch

All logging intervals as per client request



Lengths are in ft
 Maximum Outer Diameter = 3.800 in
 Line: Sensor Location, Value: Gating Offset
 All measurements are relative to TOOL_ZERO

Depth Summary

	One		
Depth Measuring Device			
Type	IDW-B		

Serial Number			
Calibration Date			
Calibrator Serial Number			
Calibration Cable Type			
Wheel Correction 1	0		
Wheel Correction 2	0		

Tension Device

Type	CMTD-B/A		
Serial Number			
Calibration Date			
Calibrator Serial Number			
Number of Calibration Points	0		

Logging Cable

Type	7-46A-XS		
Serial Number	F721083		
Length	28000.00 ft		
Conveyance Type	Wireline		
Rig Type			

One:Depth Control Parameters **Depth Control Remarks**

Log Sequence	First Log In the Well	Schlumberger depth control procedures followed
Rig Up Length At Surface		IDW used as primary depth control system
Rig Up Length At Bottom		Z-Chart used as secondary depth control system
Rig Up Length Correction		
Stretch Correction		
Tool Zero Check At Surface		

USIT - Fluid Properties Measurement

Run Name	Pass Name	Start Depth(ft)	Stop Depth(ft)
Run 1	Log[8]:Up	7211.67	74.76

Fluid Velocity = "Automatic".
CFVL equals DFSL channel

Start Depth(ft)	Stop Depth(ft)	Start Value(us/ft)	End Value(us/ft)
-----------------	----------------	--------------------	------------------

Mud Impedance = "FreePipe Norm."
Free Pipe normalization zone is : 123.29m(404.50ft) to 125.45m(411.58ft)
MUD_N_FRP = 1.14
DFD = 0.99g/cm3(8.30lbm/gal)
CZMD median computed in free pipe normalization interval = 1.58 MRayl

Start Depth(ft)	Stop Depth(ft)	Start Value(Mrayl)	End Value(Mrayl)
-----------------	----------------	--------------------	------------------

One

IBC VDL WIDE

Pass Summary

Run Name	Pass Objective	Direction	Top	Bottom	Start	Stop	DSC Mode	Depth Shift	Include Parallel Data
One	Log[8]:Up	Up	74.76 ft	7211.67 ft	11-Apr-2022 9:54:47 AM	11-Apr-2022 11:46:21 AM	ON	4.95 ft	Yes

All depths are referenced to toolstring zero

TIME_1900 - Time Marked every 60.00 (s)

Gamma Ray
(ECGR_EDT
C) EDTC-B
0 gAPI 150

Casing Collar
Locator
Ultrasonic
(CCLU)
USIT-E
-19 in 1

Casing
Centering
Percentage
(U-USIT_UC
CP) USIT-E
0 % 100

Annulus
Thickness
Minimum
(UATN)
USIT-E
0 ft 0.1

Custom Normalization

USIT - Acoustic Impedance (AIBK) USIT-E (Mrayl)

Absent 3.090 5.054 7.018

Explicit Normalization

USIT - Solid Liquid Gas Sorted Color Map (USLP) USIT-E

Absent 1.500 3.500

Amplitude

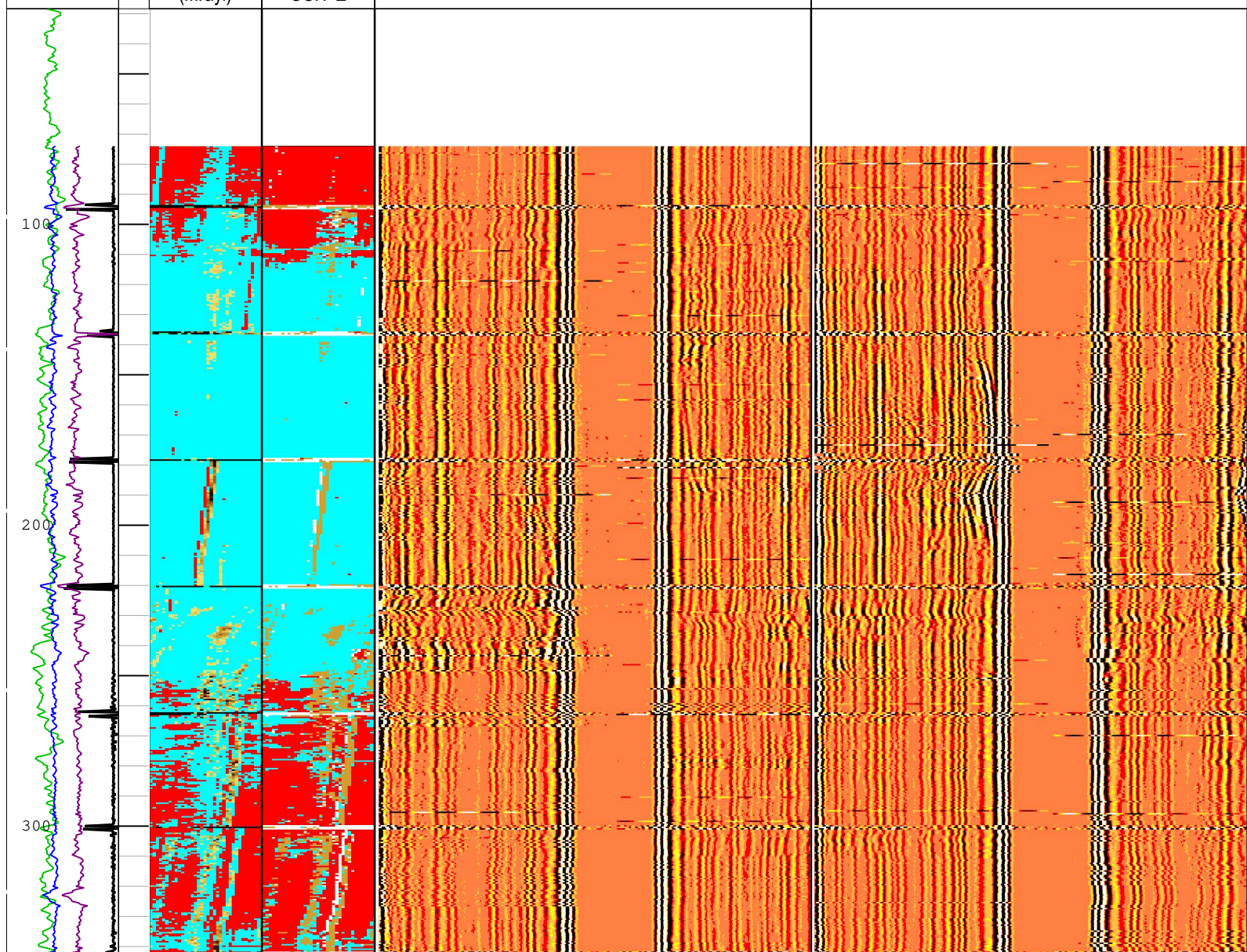
Far at 0 and 180 deg USIT-E

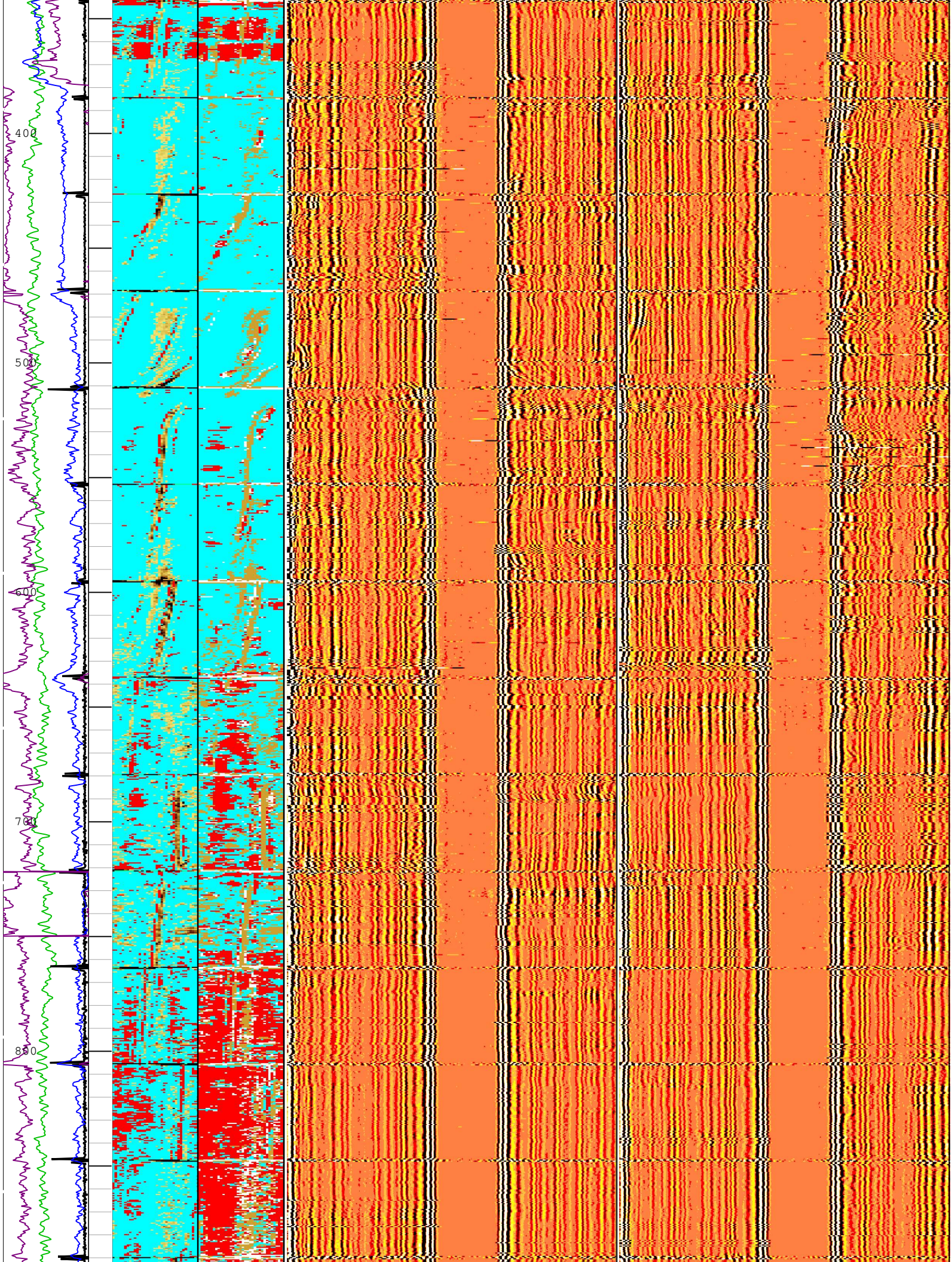
Min -150 us Max 150

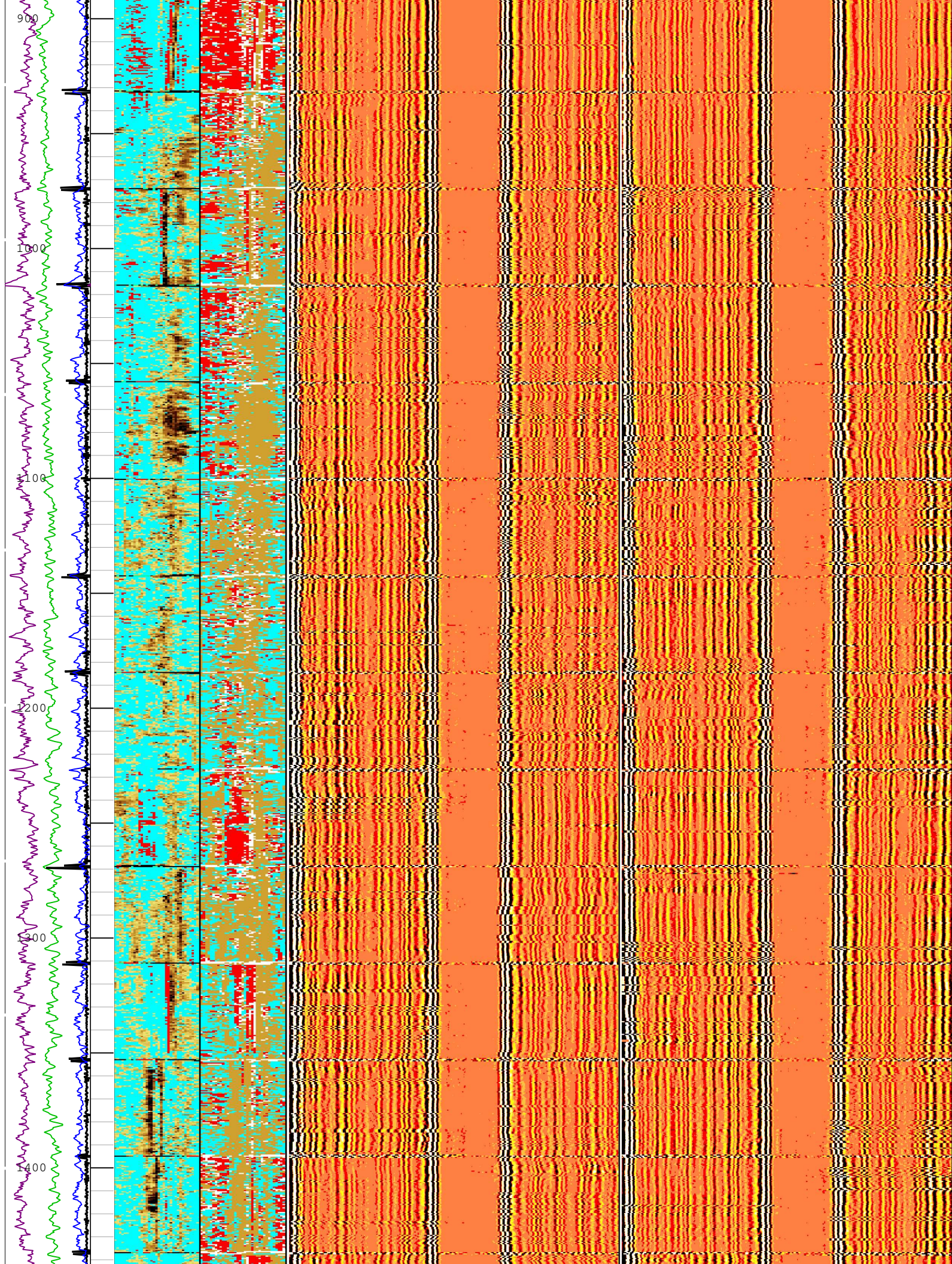
Amplitude

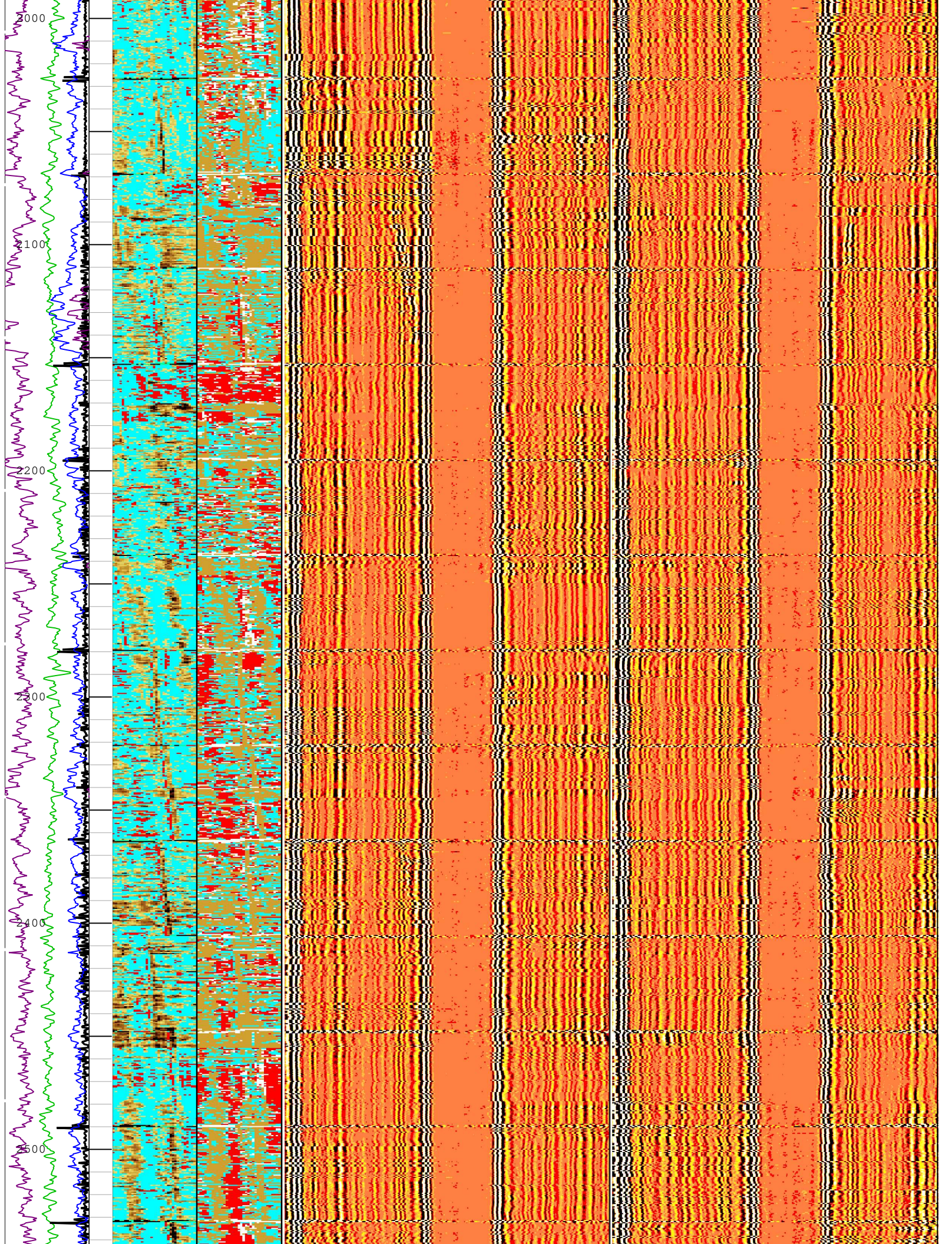
Far at 90 and 270 deg USIT-E

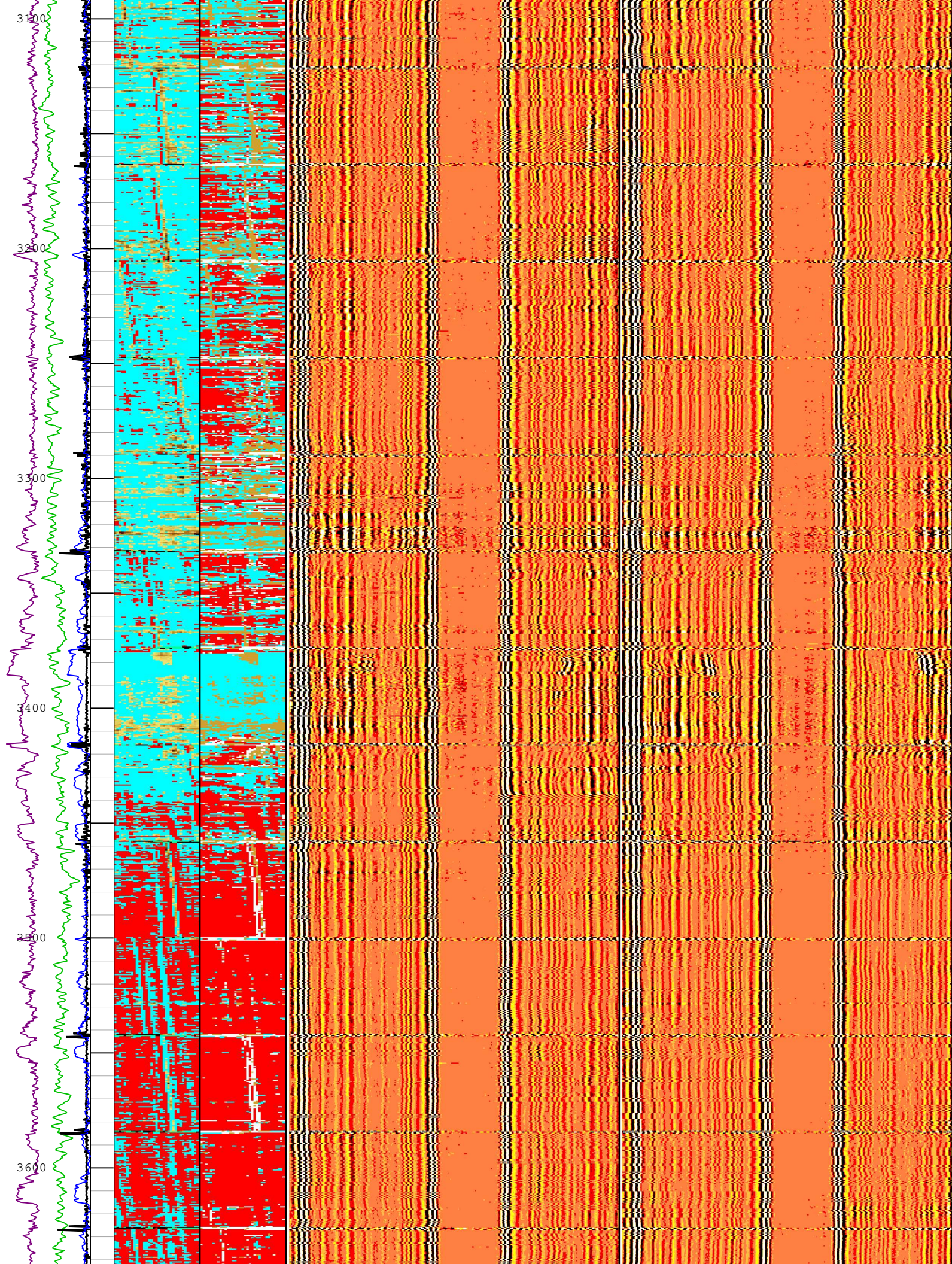
Min -150 us Max 150

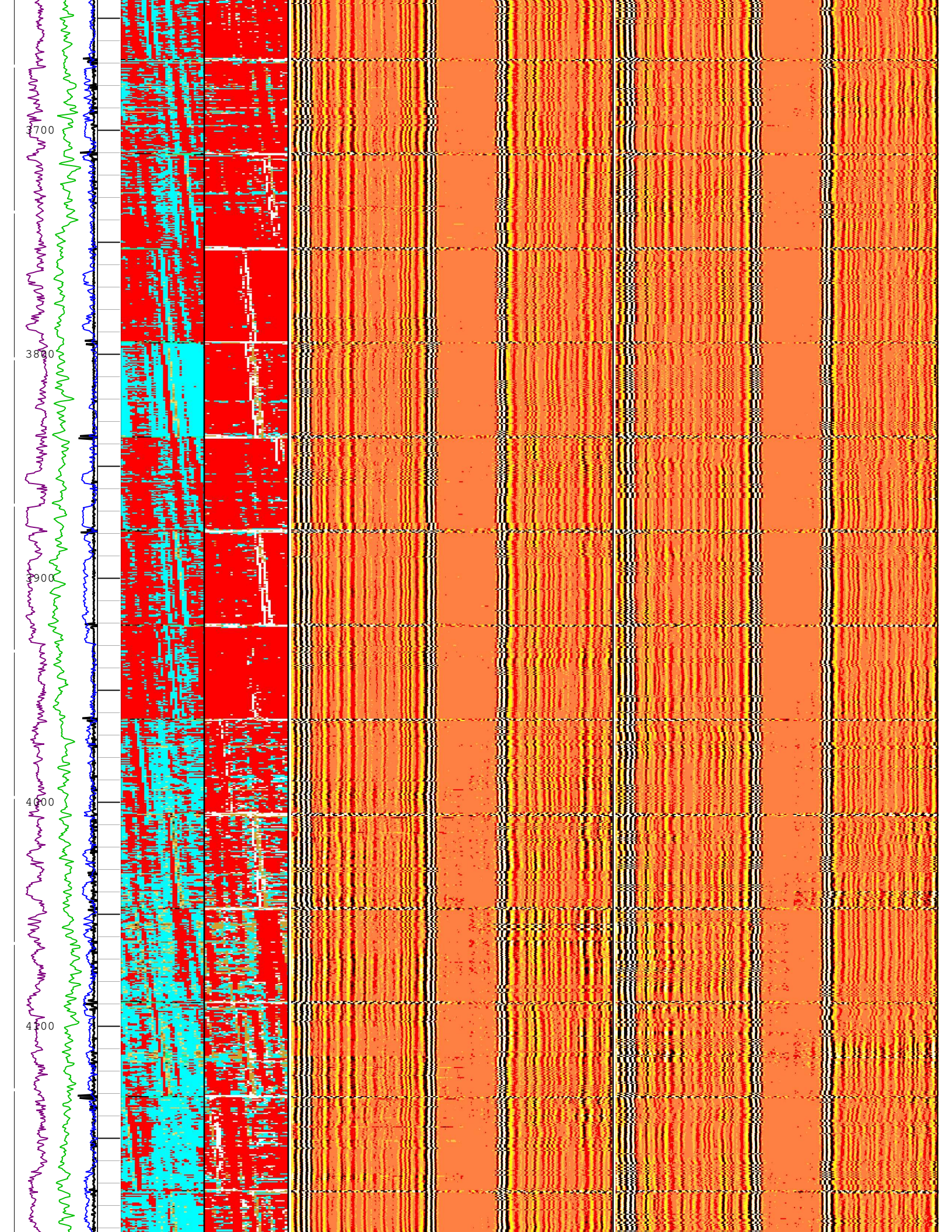


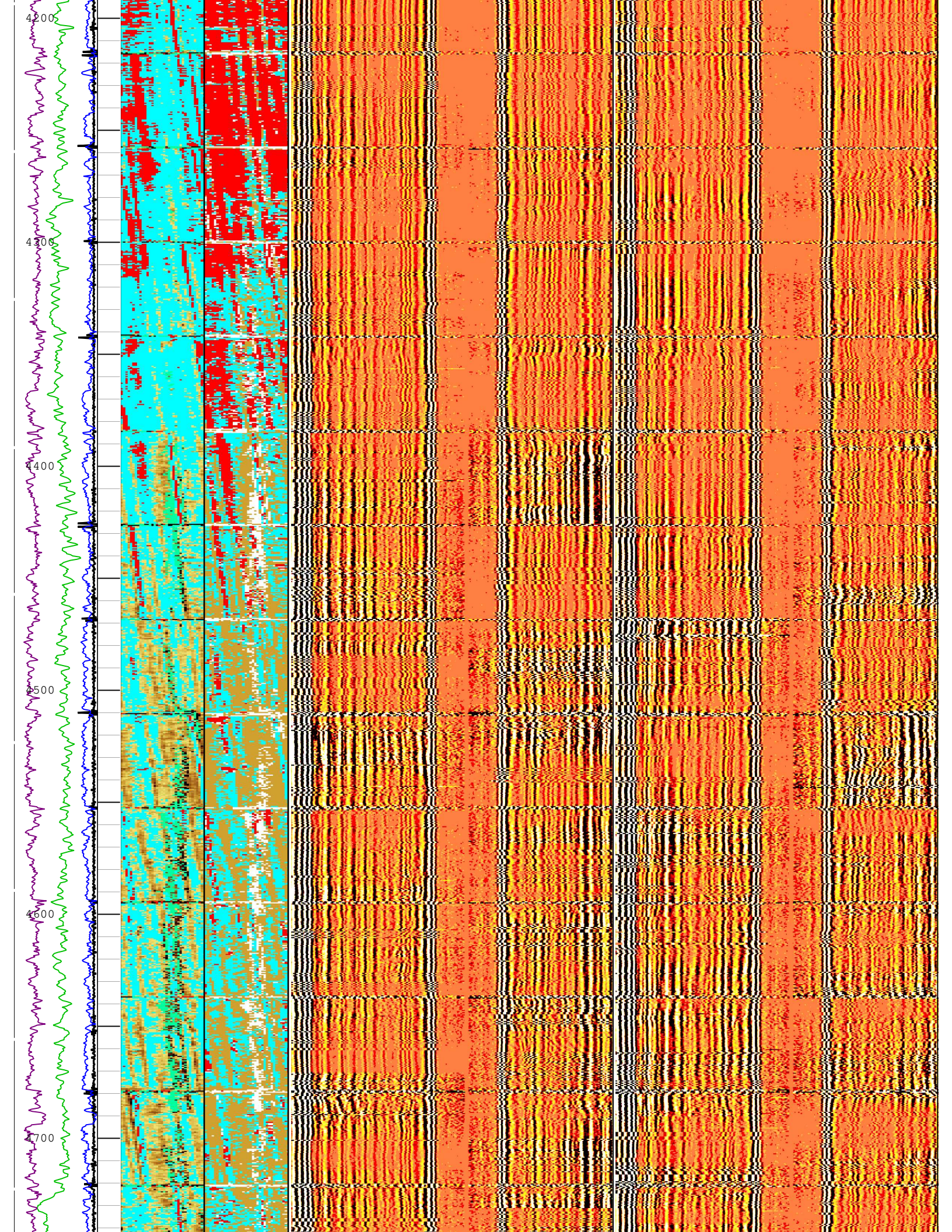


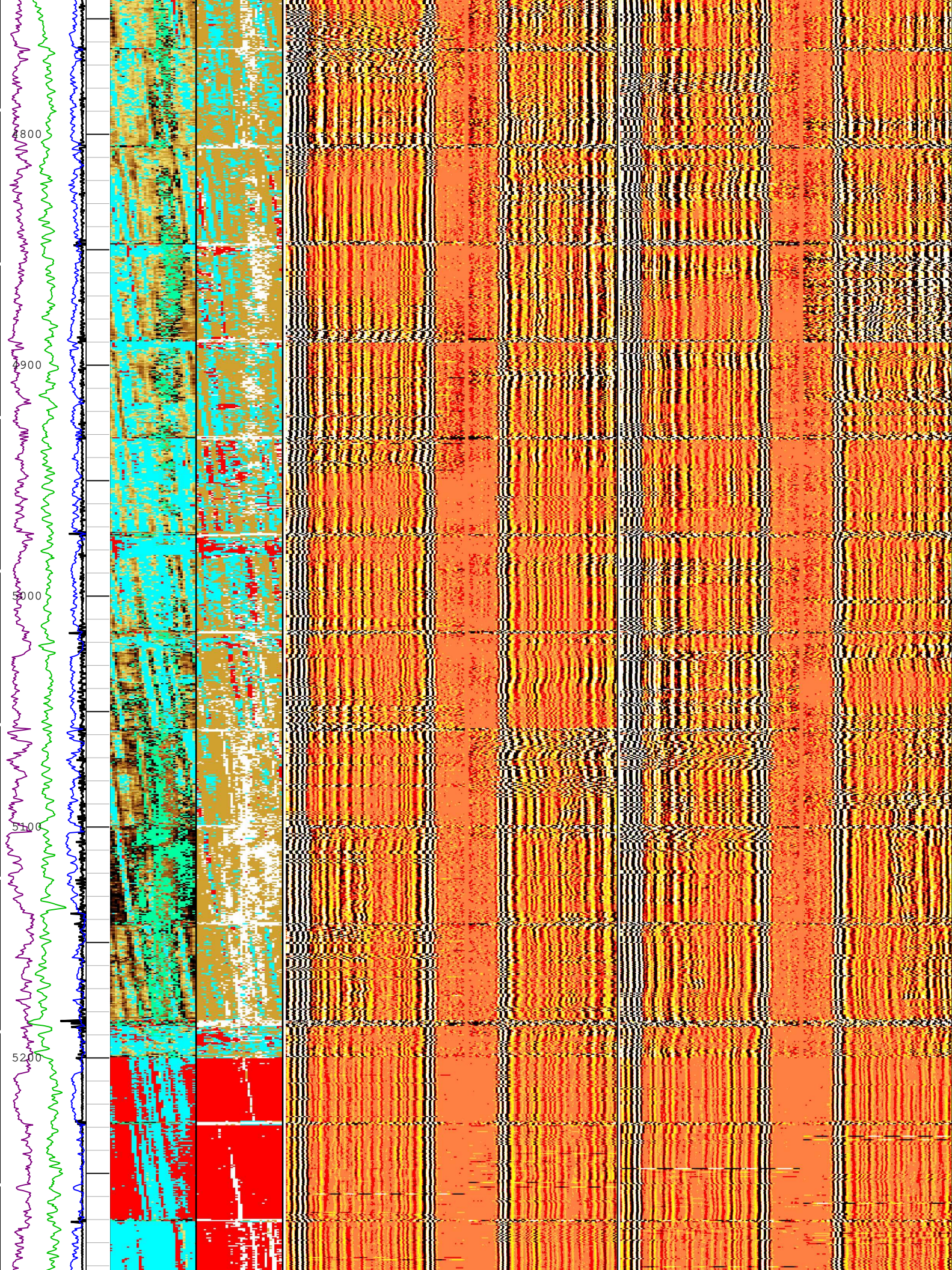


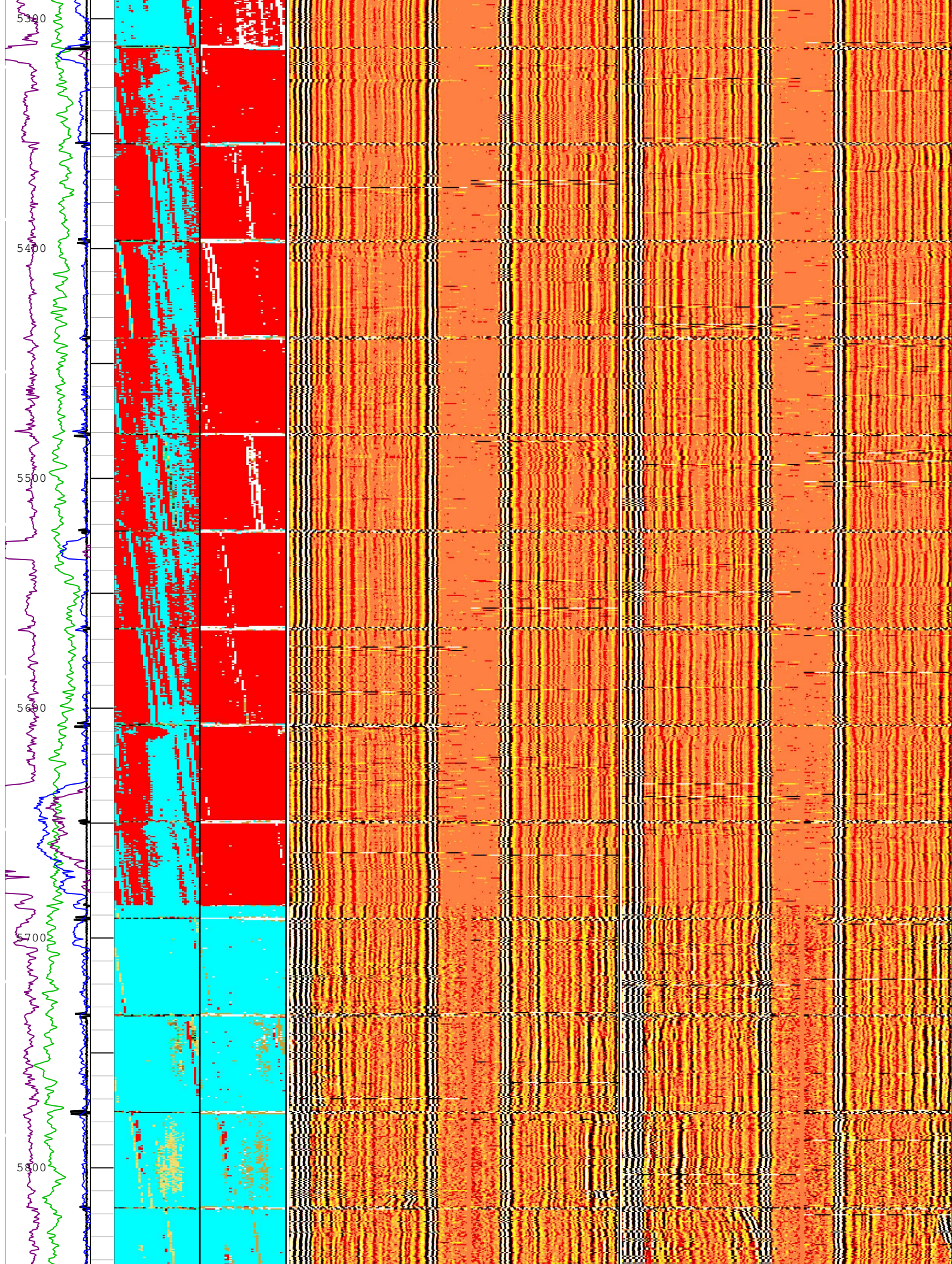


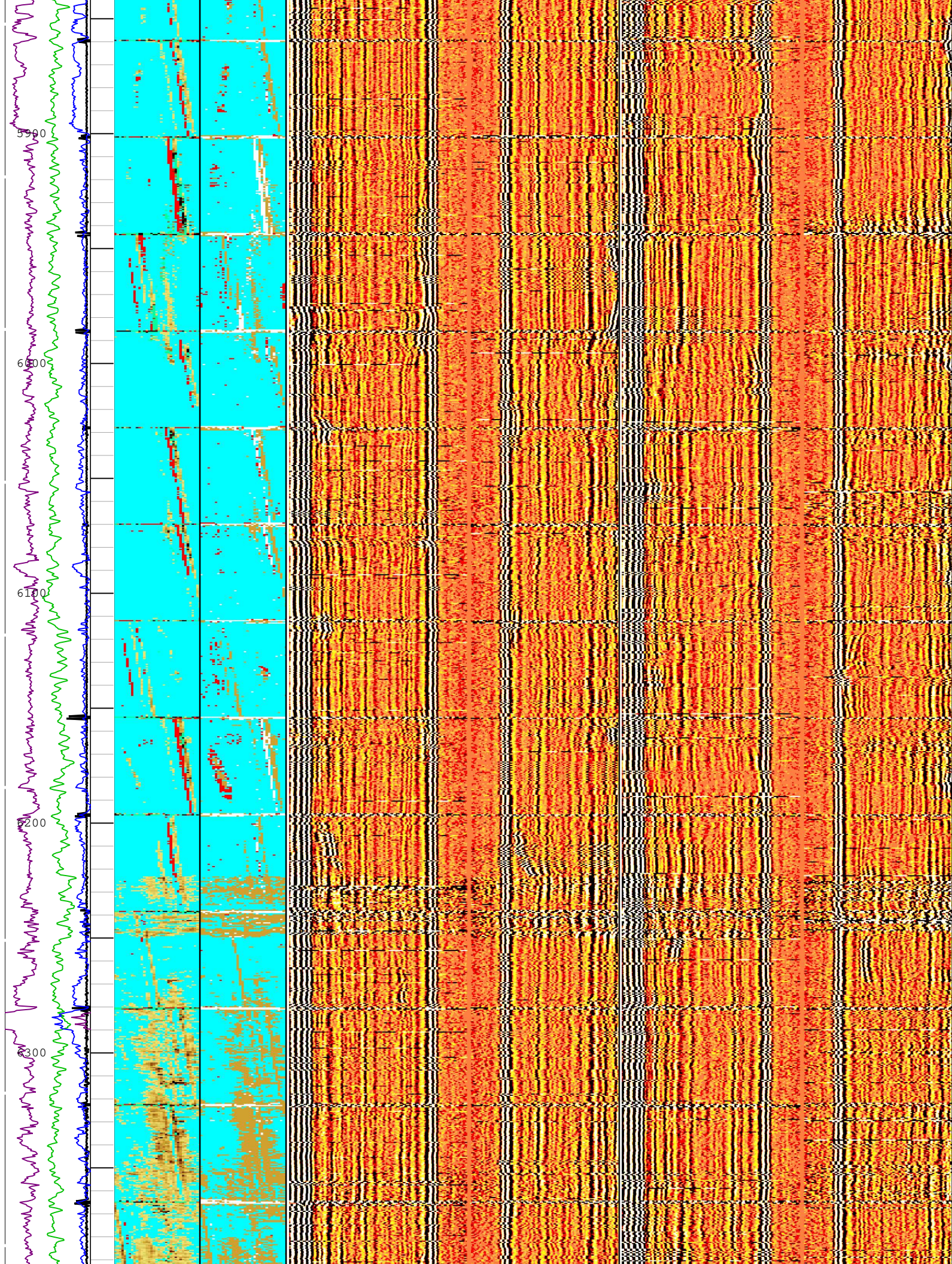


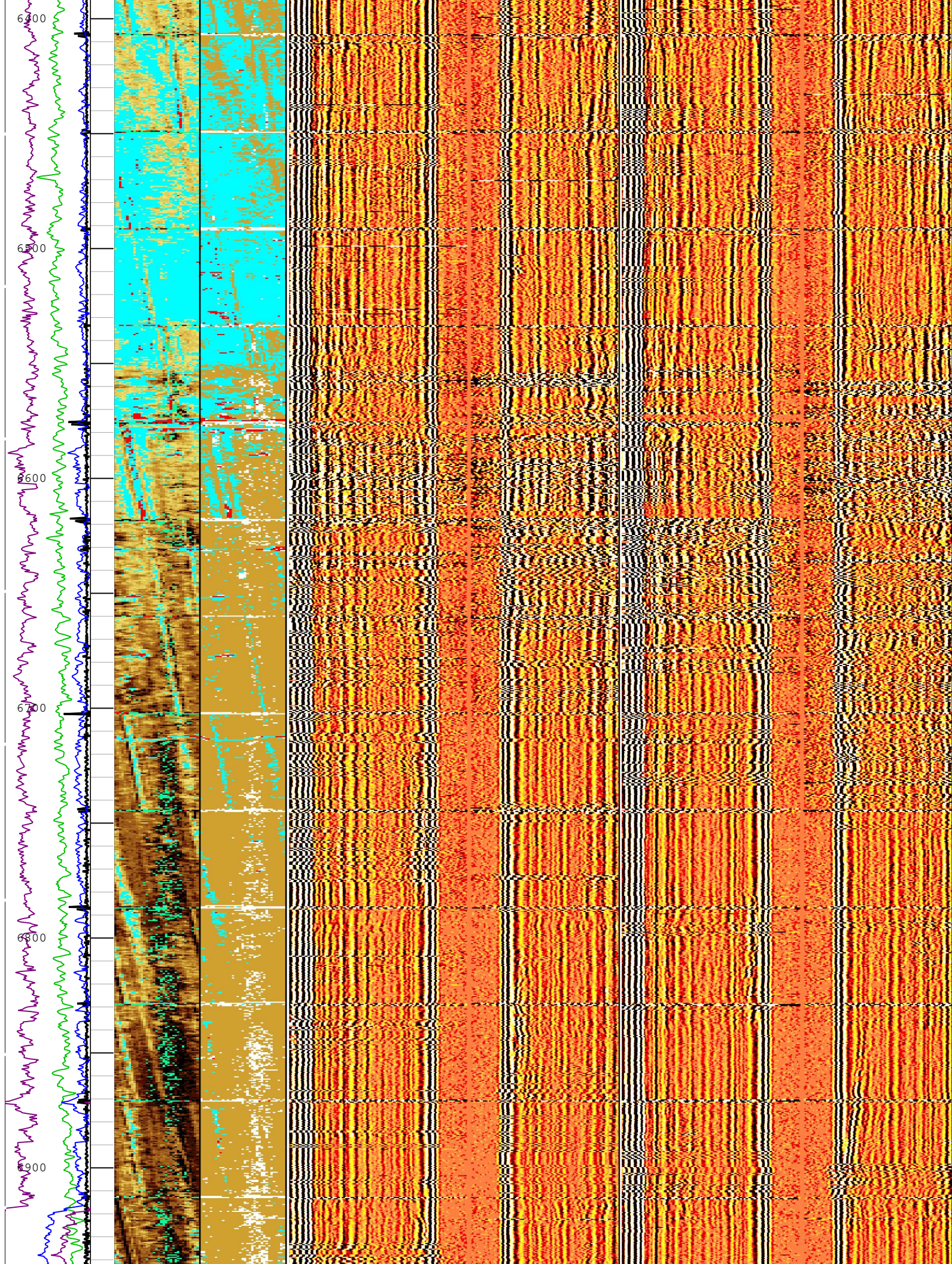


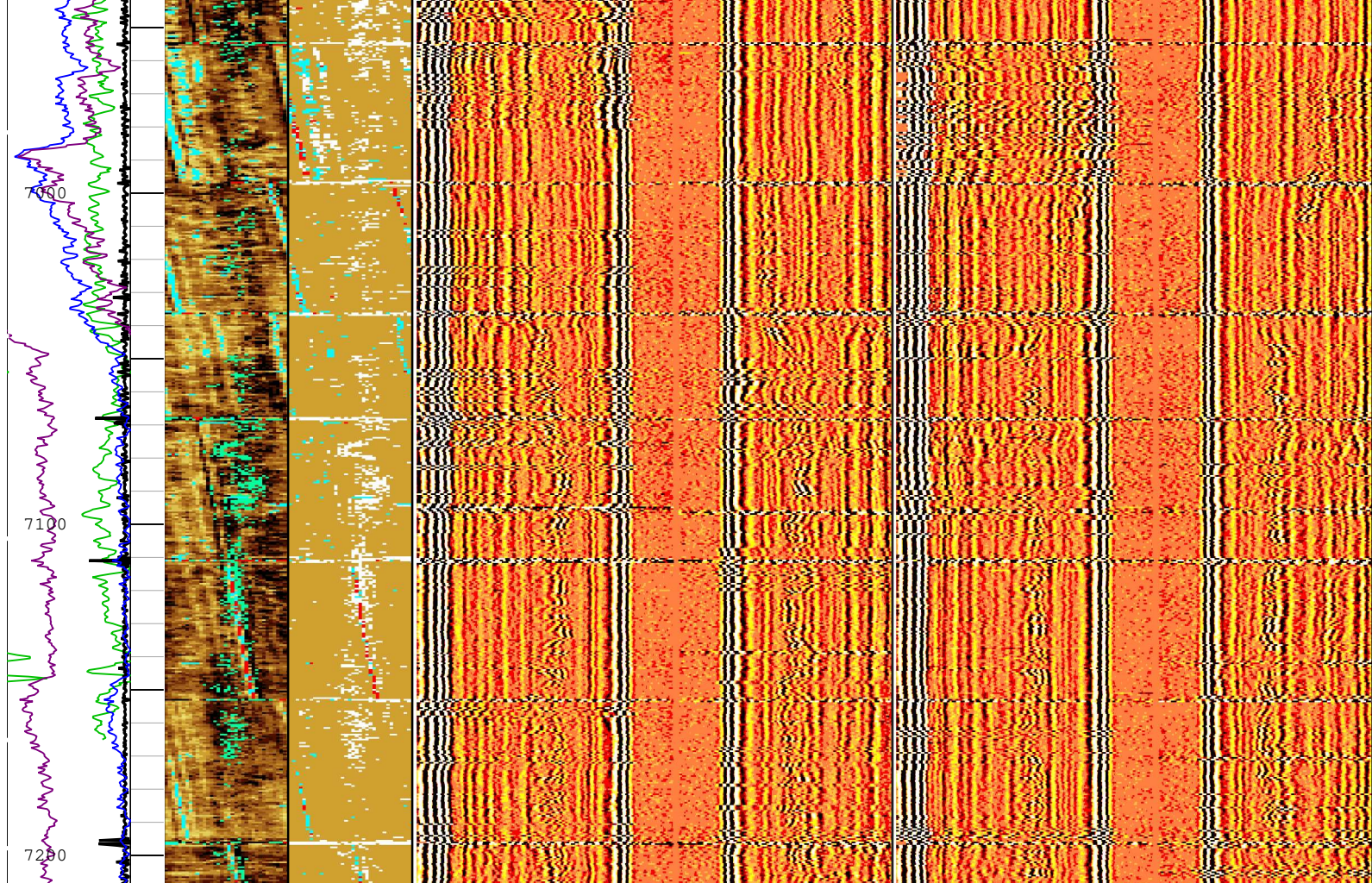












Gamma Ray
(ECGR_EDT
C) EDTC-B
0 gAPI 150

Absent 3.090 5.054 7.018
Custom Normalization
USIT - Acoustic Impedance (AIBK) USIT-E (Mrayl)

Absent 1.500 3.500
Explicit Normalization
USIT - Solid Liquid Gas Sorted Color Map (USLP) USIT-E

Casing Collar
Locator
Ultrasonic
(CCLU)
USIT-E
-19 in 1

Casing
Centering
Percentage
(U-USIT_UC
CP) USIT-E
0 % 100

Annulus
Thickness
Minimum
(UATN)
USIT-E
0 ft 0.1

Min Amplitude Max
Far at 0 and 180 deg USIT-E
-150 us 150

Min Amplitude Max
Far at 90 and 270 deg USIT-E
-150 us 150

TIME_1900 - Time Marked every 60.00 (s)

Description: USI IBC VDL WIDE Format: Log (IBC VDL WIDE) Index Scale: 2 in per 100 ft Index Unit: ft Index Type: Measured Depth Creation Date: 11-Apr-2022 12:45:49

Pass Summary

Run Name	Pass Objective	Direction	Top	Bottom	Start	Stop	DSC Mode	Depth Shift	Include Parallel Data
One	Log[5]:Up	Up	3173.53 ft	3455.15 ft	11-Apr-2022 9:18:10 AM	11-Apr-2022 9:26:29 AM	ON	1.82 ft	Yes

All depths are referenced to toolstring zero

Log	Company: Occidental Petroleum Inc	Well: Camenisch 2-15
	One: Log[5]:Up:S014	

Description: USI IBC VDL WIDE Format: Log (IBC VDL WIDE) Index Scale: 2 in per 100 ft Index Unit: ft Index Type: Measured Depth Creation Date: 11-Apr-2022 12:45:59

TIME_1900 - Time Marked every 60.00 (s)

Gamma Ray
(ECGR_EDT
C) EDTC-B
0 gAPI 150

Annulus
Thickness
Minimum
(UATN)
USIT-E
0 ft 0.1

Casing
Centering
Percentage
(U-USIT_UC
CP) USIT-E
0 % 100

Casing Collar
Locator
Ultrasonic
(CCLU)
USIT-E
-19 in 1

Absent 3.090 5.054 7.018

Custom Normalization

USIT - Acoustic Impedance (AIBK) USIT-E (Mrayl)

Absent 1.500 3.500

Explicit Normalization

USIT - Solid Liquid Gas Sorted Color Map (USLP) USIT-E

Min Amplitude Max

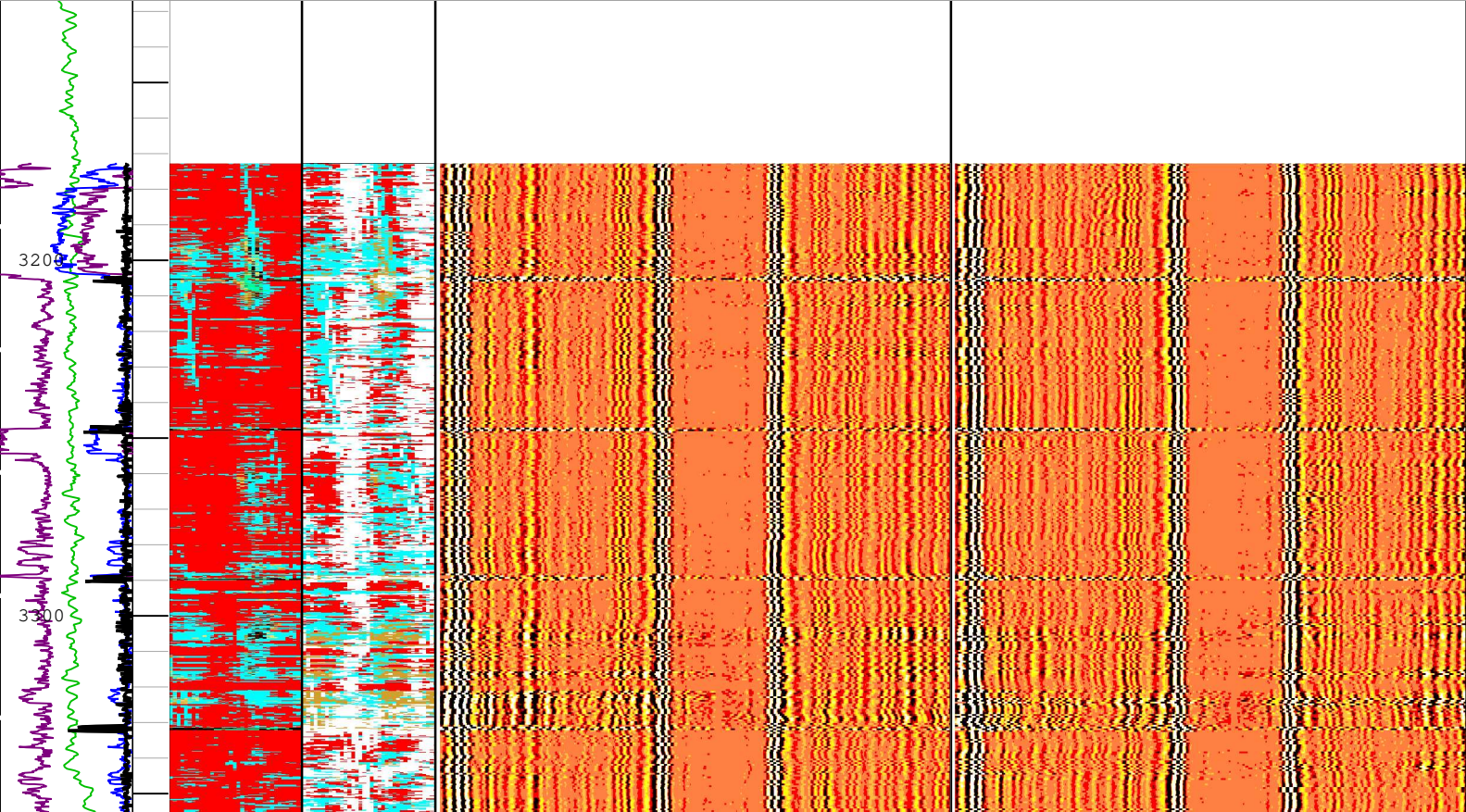
Far at 0 and 180 deg USIT-E

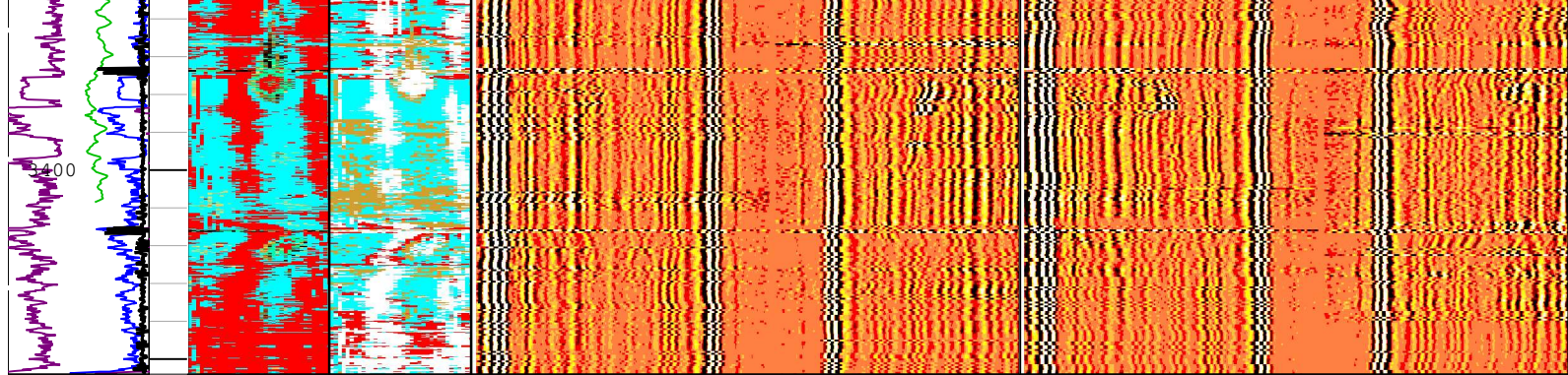
-150 us 150

Min Amplitude Max

Far at 90 and 270 deg USIT-E

-150 us 150





Gamma Ray
(ECGR_EDT
C) EDTC-B
0 gAPI 150

Absent 3.090 5.054 7.018
Custom Normalization
USIT - Acoustic Impedance (AIBK) USIT-E (Mrayl)

Absent 1.500 3.500
Explicit Normalization
USIT - Solid Liquid Gas Sorted Color Map (USLP) USIT-E

Min Amplitude Max
Far at 0 and 180 deg USIT-E
-150 us 150

Min Amplitude Max
Far at 90 and 270 deg USIT-E
-150 us 150

Annulus Thickness Minimum (UATN) USIT-E
0 ft 0.1

Casing Centering Percentage (U-USIT_UC CP) USIT-E
0 % 100

Casing Collar Locator Ultrasonic (CCLU) USIT-E
-19 in 1

TIME_1900 - Time Marked every 60.00 (s)

Description: USI IBC VDL WIDE Format: Log (IBC VDL WIDE) Index Scale: 2 in per 100 ft Index Unit: ft Index Type: Measured Depth Creation Date: 11-Apr-2022 12:45:59

Company: Occidental Petroleum Inc

Schlumberger

Well: Camenisch 2-15

Field: Wattenberg

County: Weld

State: Colorado

Isolation Scanner

VDL Wide

Gamma Ray - CCL