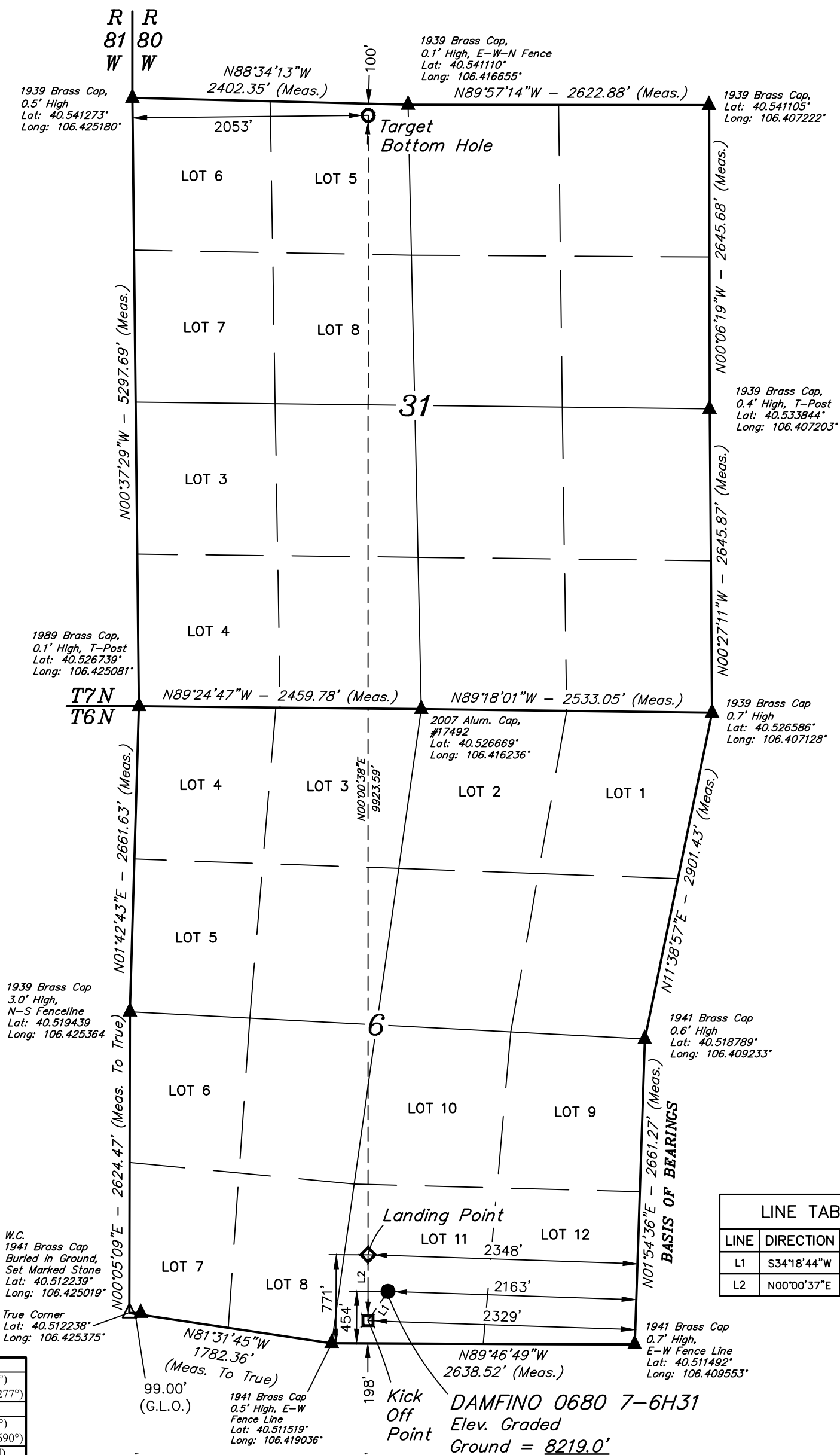


T6N, R80W, 6th P.M.

- = PROPOSED WELLHEAD.
- = KICK OFF POINT.
- ◆ = LANDING POINT.
- = TARGET BOTTOM HOLE.
- ▲ = SECTION CORNERS LOCATED. (NAD 83)
- △ = SECTION CORNERS RE-ESTABLISHED. (Not Set on Ground.) (NAD 83)

NOTE:
Distances referenced
on plat to section lines
are perpendicular.



LINE TABLE		
LINE	DIRECTION	LENGTH
L1	S34°18'44"W	308.81'
L2	N00°00'37"E	573.30'

PDOP = 1.5

NAD 83 (SURFACE LOCATION)
LATITUDE = 40°30'45.93" (40.512758°)
LONGITUDE = 106°25'02.20" (106.417277°)
NAD 27 (SURFACE LOCATION)
LATITUDE = 40°30'46.00" (40.512777°)
LONGITUDE = 106°25'00.08" (106.416690°)
STATE PLANE NAD 83 (CO. NORTH)
N: 1430957.42' E: 2744958.23'
STATE PLANE NAD 27 (CO. NORTH)
N: 430955.17' E: 17451.745'

NAD 83 (KICK OFF POINT)	NAD 83 (LANDING POINT)	NAD 83 (TARGET BOTTOM HOLE)
LATITUDE = 40°30'43.41" (40.512058°)	LATITUDE = 40°30'49.07" (40.513631°)	LATITUDE = 40°32'27.09" (40.540859°)
LONGITUDE = 106°25'04.45" (106.417903°)	LONGITUDE = 106°25'04.45" (106.417903°)	LONGITUDE = 106°25'04.45" (106.417903°)
NAD 27 (KICK OFF POINT)	NAD 27 (LANDING POINT)	NAD 27 (TARGET BOTTOM HOLE)
LATITUDE = 40°30'43.48" (40.512077°)	LATITUDE = 40°30'49.14" (40.513650°)	LATITUDE = 40°32'27.16" (40.540879°)
LONGITUDE = 106°25'02.34" (106.417316°)	LONGITUDE = 106°25'02.34" (106.417316°)	LONGITUDE = 106°25'02.34" (106.417316°)
STATE PLANE NAD 83 (CO. NORTH)	STATE PLANE NAD 83 (CO. NORTH)	STATE PLANE NAD 83 (CO. NORTH)
N: 1430704.24' E: 2744781.64'	N: 1431277.26' E: 2744787.57'	N: 1441196.10' E: 2744890.25'
STATE PLANE NAD 27 (CO. NORTH)	STATE PLANE NAD 27 (CO. NORTH)	STATE PLANE NAD 27 (CO. NORTH)
N: 430701.98' E: 1744938.16'	N: 431275.01' E: 1744944.09'	N: 441193.90' E: 1745046.68'

THIS IS TO CERTIFY THAT THE ABOVE WAS PREPARED FROM FIELD
NOTES OF ACTUAL SURVEYS MADE BY ME OR UNDER MY SUPERVISION
AND THAT THE SAME ARE TRUE AND CORRECT TO THE BEST OF MY
KNOWLEDGE AND BELIEF.

REGISTERED LAND SURVEYOR
REGISTRATION NO. 28285
STATE OF COLORADO

BASIS OF BEARINGS

BEARINGS ARE A BASED ASSUMPTION THAT THE EAST LINE OF THE SOUTHEAST 1/4 OF SECTION 6 BEARS N01°54'36"E. MONUMENTS DESCRIBED HEREON.

BASIS OF ELEVATION

SPOT ELEVATION AT THE SOUTHEAST CORNER OF SECTION 29, T7N, R80W, 6th P.M., TAKEN FROM THE COALMONT, QUADRANGLE, COLORADO, JACKSON COUNTY, 7.5 MINUTE QUAD. (TOPOGRAPHIC MAP) PUBLISHED BY THE UNITED STATES DEPARTMENT OF THE INTERIOR, GEOLOGICAL SURVEY. SAID ELEVATION IS MARKED AS BEING 8156 FEET.

UELS, LLC

**Corporate Office * 85 South 200 East
Vernal, UT 84078 * (435) 789-1017**



D90 ENERGY, LLC

DAMFINO 0680 7-6H31
LOT 11, SECTION 6, T6N, R80W, 6th P.M.
JACKSON COUNTY, COLORADO

SURVEYED BY	GREG WEIMER	05-02-22	SCALE
DRAWN BY	T.L.L.	05-31-22	1" = 1000'

WELL LOCATION PLAT