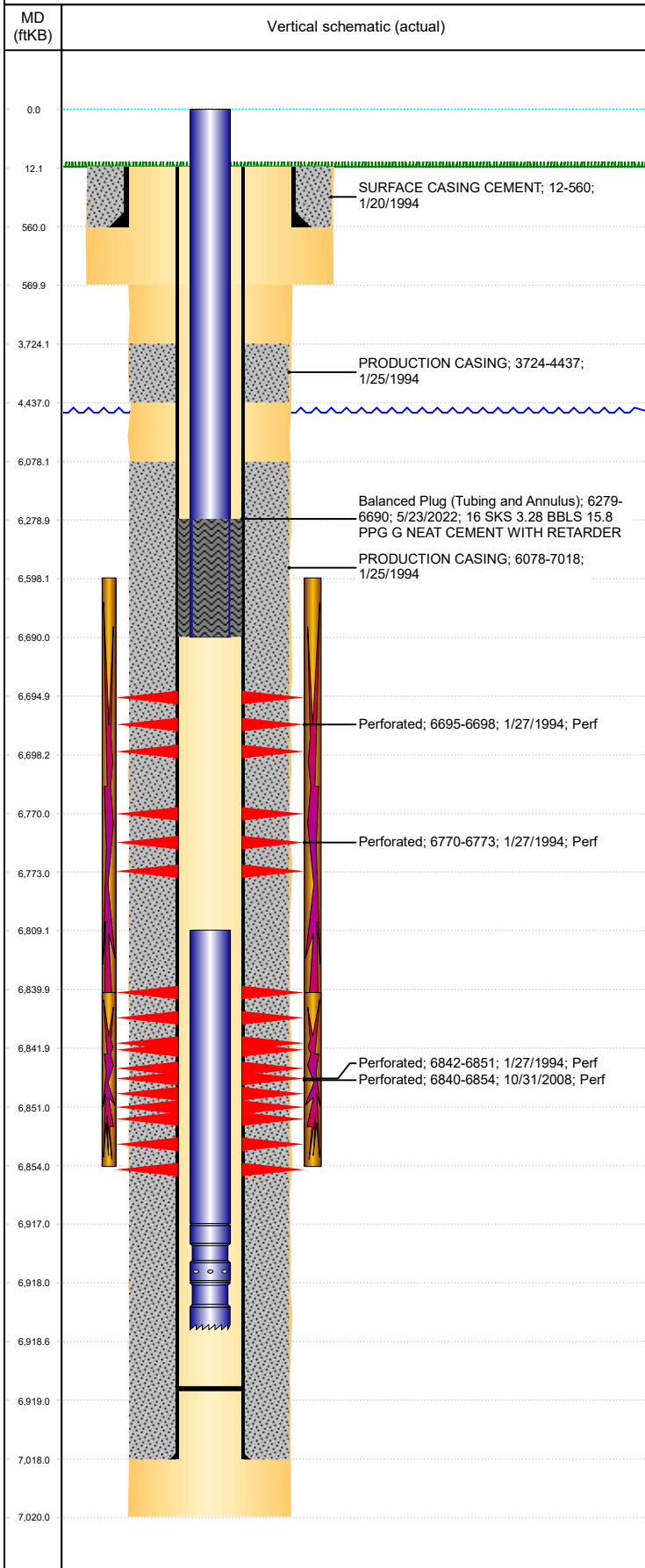




P&A Wellbore For State

Well Name: STATE 36-0614

Land, Original Hole, 6/7/2022 10:42:00 PM



Well Header									
Surface UWI 0512317797			Business Unit Rockies			Gov Auth Dist		Prod Tree Loc Land	
Orig. KB to Gnd (ft) 12.00		Original Spud Date 1/20/1994		Abandon Date		Well Sub-Status TA			High... N
Comment WELL FILE DATA SKETCHY.									
Surface Location (Congressional)									
Qtr 3 SE	Qtr 4 NW	Section 36	Twنشp 4	Twنش... N	Range 64	Rng E/... W	Latitude (°) 40.27129990 5	Longitude (°) -104.501632229	
Wellbore Sections									
Section Des			Hole Size (in)			Act Top (ftKB)		Act Btm (ftKB)	
SURFACE			12 1/4			12.0		570.0	
PRODUCTION			7 7/8			570.0		7,020.0	
Casing Strings									
Csg Des			Run Date		OD (in)	Wt/Len (lb/ft)	Grade	Top Depth (MD) (ftKB)	Set Depth (MD) (ftKB)
Surface			1/20/1994		8 5/8	23.00	M-50	12	560
Production Casing			1/25/1994		3 1/2	7.70	B-70	12	7018
Cement									
Des					Start Date		Top (ftKB)		Btm (ftKB)
SURFACE CASING CEMENT					1/20/1994		12.0		560.0
PRODUCTION CASING					1/25/1994		3,724.0		4,437.0
PRODUCTION CASING					1/25/1994		6,078.0		7,018.0
Balanced Plug (Tubing and Annulus)					5/23/2022		6,279.0		6,690.0
Zone Statuses									
Zone Name		Status Date	Status	Fluid Type	Job			Prod Method	
NIORARA-CO...		9/6/2017	PR	Water	SET CEMENT PLUG, 4/20/2022 00:00			Flowing	
NIORARA-CO...		5/23/2022	Closed						
CODELL		7/10/2009	PR						
CODELL		5/23/2022	Closed	Water	SET CEMENT PLUG, 4/20/2022 00:00			Flowing	
NIORARA		7/10/2009	PR						
NIORARA		5/23/2022	Closed						
SET CEMENT PLUG, 4/20/2022 00:00									
Perforation Data									
Linked Zone			Explosive Type	Entered Shot Total	Top (ftKB)		Btm (ftKB)		Date
NIORARA, Original Hole				3	6,695.0		6,698.0		1/27/1994
NIORARA, Original Hole				3	6,770.0		6,773.0		1/27/1994
CODELL, Original Hole				56	6,840.0		6,854.0		10/31/2008
CODELL, Original Hole				9	6,842.0		6,851.0		1/27/1994
Stimulation Intervals									
Zone				Start Date		Top (ftKB)		Btm (ftKB)	
NIORARA-CODELL, Original Hole				1/28/1994		6,598.0		6,854.0	
CODELL, Original Hole				11/18/2008		6,840.0		6,854.0	
Other In Hole									
Run Date		Des			Make		OD (in)	Top (ftKB)	Btm (ftKB)
Logs									
Date		Type					Depth Top (MD) (ftKB)	Btm (ftKB)	
1/24/1994		Compensated Density					4,150	6,982.0	
1/24/1994		Induction					560	6,982.0	
1/27/1994		Cement Bond					3,600	6,952.0	
Plug Back Total Depths									
Date		Type			Com				PBTD (ftKB)
1/27/1994		CEMENT PLUG							6,957
11/21/2008		FILL							6,919