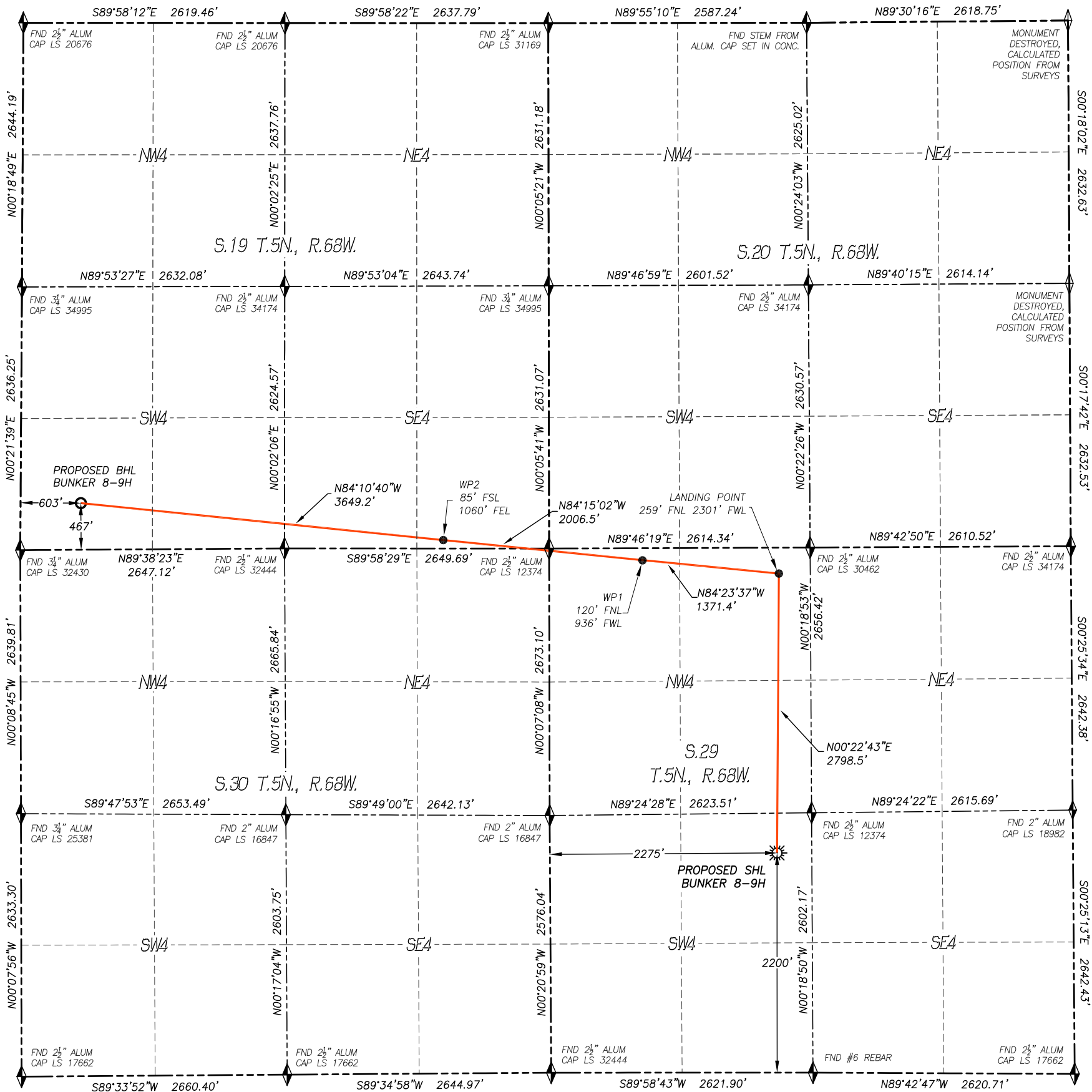


WELL LOCATION CERTIFICATE
BUNKER 8-9H

SECTION 29, TOWNSHIP 5 NORTH, RANGE 68 WEST OF THE 6TH P.M.

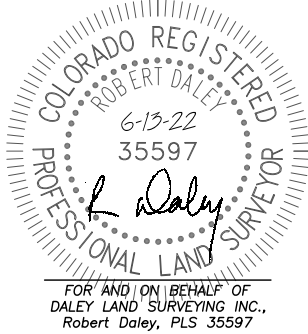


IN ACCORDANCE WITH A REQUEST FROM MAGPIE OIL AND GAS, DALEY LAND SURVEYING, INC. HAS DETERMINED THE SURFACE LOCATION OF THE BUNKER 8-9H WELL TO BE 2200' FSL, 2275' FWL, AS MEASURED AT NINETY (90) DEGREES FROM THE SECTION LINES OF SECTION 29, TOWNSHIP 5 NORTH, RANGE 68 WEST AND THE BOTTOM HOLE LOCATION TO BE 467' FSL, 603' FWL, AS MEASURED AT NINETY (90) DEGREES FROM THE SECTION LINES OF SECTION 19, TOWNSHIP 5 NORTH, RANGE 68 WEST, OF THE 6TH PRINCIPAL MERIDIAN, LARIMER COUNTY, COLORADO.

I HEREBY STATE THAT THIS WELL LOCATION CERTIFICATE WAS PREPARED BY ME OR UNDER MY DIRECT SUPERVISION, THAT THE WORK WAS COMPLETED ON 9/10/2018 FOR AND ON BEHALF OF MAGPIE OIL AND GAS, AND THAT THIS MAP DOES NOT REPRESENT A BOUNDARY SURVEY, IT IS NOT A LAND SURVEY PLAT OR AN IMPROVEMENT SURVEY PLAT AND IT IS NOT TO BE RELIED UPON FOR THE ESTABLISHMENT OF FENCE, BUILDING OR OTHER FUTURE IMPROVEMENT LINES.

NOTES:

- BEARINGS FOR THIS MAP ARE ASSUMED AND BASED UPON GPS OBSERVATIONS MADE BETWEEN MONUMENTS LOCATED AT THE SOUTH QUARTER CORNER AND THE SOUTHWEST CORNER OF SECTION 29, T.5N., R.68W.
- HORIZONTAL DATUM IS NAD83.
- VERTICAL DATUM IS NAVD88 AND ORIGINATES FROM THE LOCAL C.O.R.S. NETWORK, UTILIZING THE GEOID12A MODEL.
- SEE LOCATION DRAWING FOR VISIBLE IMPROVEMENTS WITHIN 500' OF PROPOSED DISTURBED AREA.
- SURFACE USE: WELL PAD/AGRICULTURAL.
- INST. OPERATOR: KYLE DALEY.



NEAREST CULTURAL ITEMS:

RESIDENTIAL BUILDING UNIT:
BUILDING UNIT: 1988'± SE
BUILDING: 1973'± NW
HIGH OCC. BLD. UNIT: 5280'+
DES. OUTSIDE ACTIVITY AREA: 5280'+
PUBLIC ROAD: 2199'± S
ABOVE GROUND UTILITY: 2228'± W
RAILROAD: 5280'+
PROPERTY LINE: 348'± E
SCHOOL FACILITY: 5280'+
SCHOOL PROPERTY LINE: 5280'+
CHILD CARE CENTER: 5280'+

NAD 83 LATITUDE AND LONGITUDE

SURFACE LOCATION:

LATITUDE: N40.36989°
LONGITUDE: W105.03201°
ELEV: 4982'
PDOP: 1.8
QTR/QTR: NE4/SW4

LANDING POINT/TPZ:

LATITUDE: N40.37757°
LONGITUDE: W105.03190°

WP1:

LATITUDE: N40.37796°
LONGITUDE: W105.03679°

WP2:

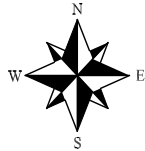
LATITUDE: N40.37854°
LONGITUDE: W105.04395°

BOTTOM HOLE:

LATITUDE: N40.37961°
LONGITUDE: W105.05697°

LEGEND

- FOUND MONUMENT
- CALCULATED POSITION
- PROPOSED WELL
- BOTTOM HOLE
- ABANDONED WELL
- EXISTING WELL
- TPZ TOP PRODUCING ZONE



0 1200
SCALE: 1" = 1200'

DALEY LAND
SURVEYING, INC.
17011 LINCOLN AVE. #301
PARKER, CO 303.953.9841