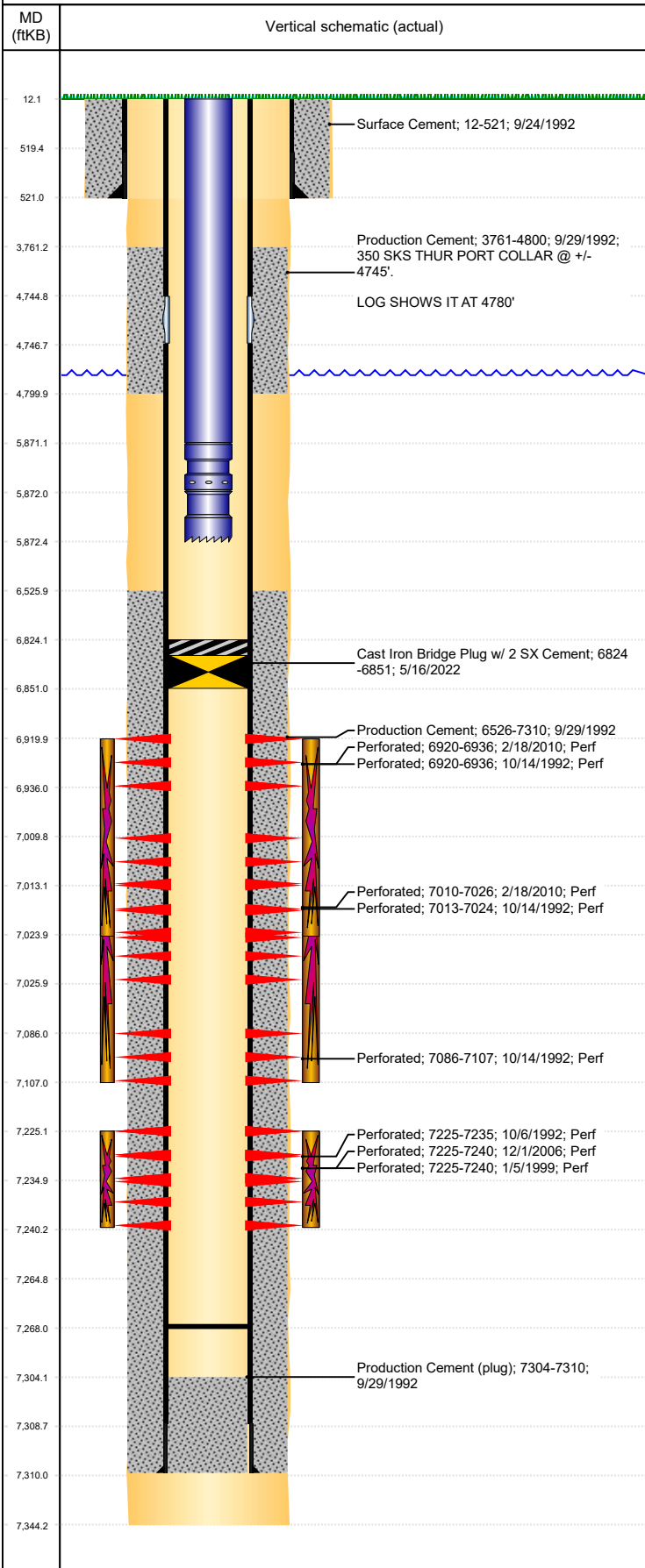




# P&A Wellbore For State

Well Name: SCHMIDT 25-01F

Land, Original Hole, 6/6/2022 8:50:06 AM



Well Header									
Surface UWI 0512316147			Business Unit Rockies			Gov Auth Dist		Prod Tree Loc Land	
Orig. KB to Gnd (ft) 12.00		Original Spud Date 9/24/1992		Abandon Date		Well Sub-Status TA		High...	
Comment STAGE TOOL @ +/- 4745' CSG PSI TEST FAILED (05/16/2022)									
Surface Location (Congressional)									
Qtr 3 NE	Qtr 4 NE	Section 25	Twshp 4	Twshp...	Range 66	Rng E/...	Latitude (°) 40.28831424 4	Longitude (°) -104.717533988	
Wellbore Sections									
Section Des		Hole Size (in)		Act Top (ftKB)		Act Btm (ftKB)			
SURFACE		12 1/4		12.0		521.0			
PRODUCTION		7 7/8		521.0		7,344.0			
Casing Strings									
Csg Des		Run Date		OD (in)	Wt/Len (lb/ft)	Grade	Top Depth (MD) (ftKB)	Set Depth (MD) (ftKB)	
Surface		9/24/1992		8 5/8	23.00	WC-50	12	521	
Production Casing		9/29/1992		4 1/2	11.60	M-75	12	7310	
Cement									
Des			Start Date		Top (ftKB)		Btm (ftKB)		
Surface Cement			9/24/1992		12.0		521.0		
Production Cement			9/29/1992		3,761.0		4,800.0		
Production Cement			9/29/1992		6,526.0		7,310.0		
Zone Statuses									
Zone Name		Status Date	Status	Fluid Type	Job			Prod Method	
NIOBRARA		11/18/2014	TA	Gas	HORIZONTAL WELL PREP, 11/12/2014 05:00				
NIOBRARA		3/12/2015	PR	Gas	HORIZONTAL WELL PREP, 11/12/2014 05:00				
CODELL		10/27/2016	SI						
CODELL		11/23/2017	PR						
Perforation Data									
Linked Zone		Explosive Type	Entered Shot Total	Top (ftKB)	Btm (ftKB)	Date			
NIOBRARA, Original Hole		A	10	6,920.0	6,936.0	10/14/1992			
NIOBRARA, Original Hole		A	32	6,920.0	6,936.0	2/18/2010			
NIOBRARA, Original Hole		B	32	7,010.0	7,026.0	2/18/2010			
NIOBRARA, Original Hole		B	10	7,013.0	7,024.0	10/14/1992			
NIOBRARA, Original Hole		C	8	7,086.0	7,107.0	10/14/1992			
CODELL, Original Hole			31	7,225.0	7,235.0	10/6/1992			
CODELL, Original Hole			30	7,225.0	7,240.0	12/1/2006			
CODELL, Original Hole			20	7,225.0	7,240.0	1/5/1999			
Stimulation Intervals									
Zone			Start Date		Top (ftKB)		Btm (ftKB)		
NIOBRARA, Original Hole			3/1/2010		6,920.0		7,024.0		
NIOBRARA, Original Hole			10/19/1992		6,920.0		7,107.0		
CODELL, Original Hole			10/7/1992		7,225.0		7,235.0		
CODELL, Original Hole			1/7/1999		7,225.0		7,240.0		
CODELL, Original Hole			12/12/2006		7,225.0		7,240.0		
Other In Hole									
Run Date		Des			Make	OD (in)	Top (ftKB)	Btm (ftKB)	
5/16/2022		Cast Iron Bridge Plug w/ 2 SX Cement				3.99	6,824.0	6,851.0	
Logs									
Date		Type				Depth Top (MD) (ftKB)	Btm (ftKB)		
9/29/1992		COMPENSATED DENSITY				3,700	7,346.0		
9/29/1992		INDUCTION				521	7,346.0		
10/6/1992		CEMENT BOND				3,550	7,267.0		
1/4/2013		GYRO				12	7,100.0		
Plug Back Total Depths									
Date		Type		Com			PBTD (ftKB)		
2/18/2010		PLUG		WIRELINE MEASUREMENT.			7,050		
3/22/2010		FILL					7,268		