

NOBLE ENERGY, INC



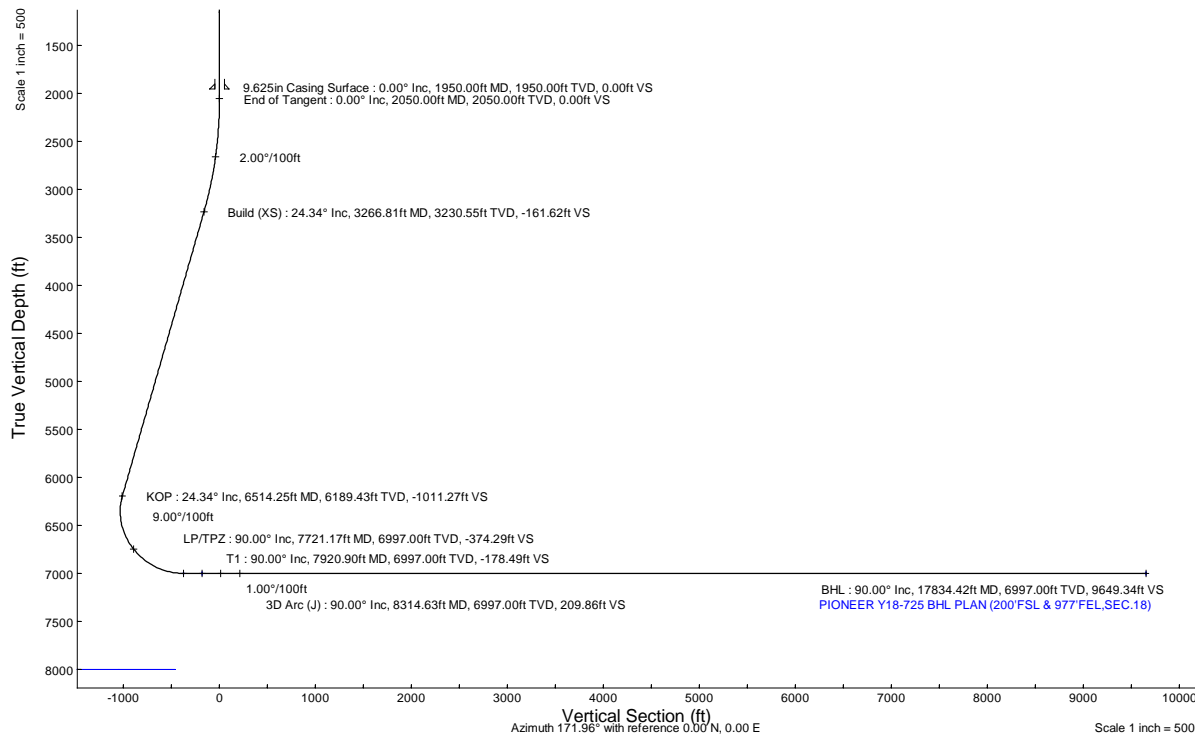
Location:	COLORADO	Slot:	SLOT#19 PIONEER Y18-725 (726°FNL & 2239°FEL, SEC.07)
Field:	WELD COUNTY (NOBLE NAD 83 GRID)	Well:	PIONEER Y18-725
Facility:	SEC.07-T02N-R64W	Wellbore:	PIONEER Y18-725 PWB

Plot reference wellpath is PIONEER Y18-725 (REV-1.0) PWP	Grid System: NAD83 / Lambert Colorado SP, Northern Zone (501), US feet
True vertical depths are referenced to (4884 GL+30 KB @ 4914 RKB) (RKB)	North Reference: Grid north
Reference wellpath measured depths are referenced to (4884 GL+30 KB @ 4914 RKB) (RKB)	Scale: True distance
(4884 GL+30 KB @ 4914 RKB) (RKB) to Mean Sea Level: 4914 feet	Coordinates are in feet referenced to Slot
Mean Sea Level to Mud line (At Slot: SLOT#19 PIONEER Y18-725 (726°FNL & 2239°FEL, SEC.07)): 0 feet	Depths are in feet
Offset wellpath MDs are referenced to each path's default MD datum	Created by: gualaler on 2022-05-23; Database: WA_Denver

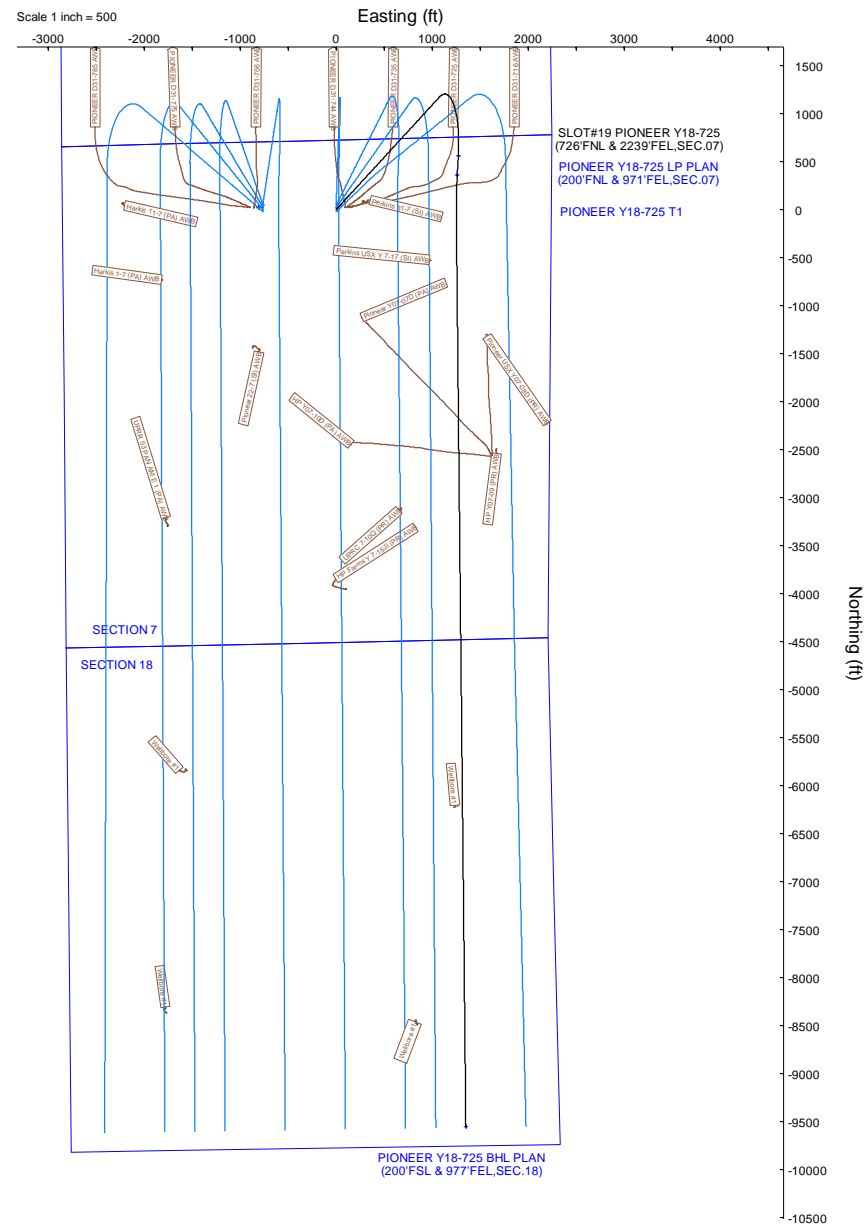
Location Information					
Facility Name		Grid East (US ft)	Grid North (US ft)	Latitude	Longitude
SEC.07-T02N-R64W		3252659.032	1301719.599	40°09'29.0880"N	104°35'45.7080"W
Slot	Local N (ft)	Local E (ft)	Grid East (US ft)	Grid North (US ft)	Latitude
SLOT#19 PIONEER Y18-725 (726°FNL & 2239°FEL, SEC.07)	-24.06	926.33	3253685.324	1301695.544	40°09'28.7568"N
(4884 GL+30 KB @ 4914 RKB) (RKB) to Mud line (At Slot: SLOT#19 PIONEER Y18-725 (726°FNL & 2239°FEL, SEC.07))					4914 ft
Mean Sea Level to Mud line (At Slot: SLOT#19 PIONEER Y18-725 (726°FNL & 2239°FEL, SEC.07))					0 ft
(4884 GL+30 KB @ 4914 RKB) (RKB) to Mean Sea Level					4914 ft

Targets							
Name	MD (ft)	TVD (ft)	Local N (ft)	Local E (ft)	Grid East (US ft)	Grid North (US ft)	Latitude
PIONEER Y18-725 SECTION 18	N/A	-1.00	21.61	-808.90	3252776.45	1301717.15	40°09'29.0520"N
PIONEER Y18-725 SECTION 7	N/A	-1.00	21.61	-808.90	3252776.45	1301717.15	40°09'29.0520"N
PIONEER Y18-725 BHL PLAN (200°FSL & 977°FEL, SEC.18)	17834.42	6997.00	-9554.39	1350.35	3254935.61	1292141.58	40°07'54.2078"N
PIONEER Y18-725 LP PLAN (200°FSL & 971°FEL, SEC.07)	7721.17	6997.00	557.82	1272.25	3254857.52	1302253.34	40°09'34.1399"N
PIONEER Y18-725 T1	7920.90	6997.00	358.43	1260.61	3254845.88	1302053.95	40°09'32.1708"N
SECTION LINES - SEC.06-T02N-R64W	N/A	7997.00	5934.25	-2903.29	3250682.16	1307629.53	40°10'27.6881"N
SECTION LINES - SEC.31-T02N-R64W	N/A	7997.00	11224.21	-2936.04	3250649.42	1312819.26	40°11'19.9642"N

Bottom Hole Location									
MD (ft)	Inc (°)	Az (°)	TVD (ft)	Local N (ft)	Local E (ft)	Grid East (US ft)	Grid North (US ft)	Latitude	Longitude
17834.42	90.000	179.403	6997.00	-9554.39	1350.35	3254935.61	1292141.58	40°07'54.2078"N	104°35'17.6557"W



Well Profile Data								
Design Comment	MD (ft)	Inc (°)	Az (°)	TVD (ft)	Local N (ft)	Local E (ft)	DLS (°/100ft)	VS (ft)
SHL	30.00	0.000	42.542	30.00	0.00	0.00	0.00	0.00
End of Tangent	2050.00	0.000	42.542	2050.00	0.00	0.00	0.00	0.00
Build (XS)	3266.81	24.336	42.542	3230.55	187.55	172.11	2.00	-161.62
KOP	6514.25	24.336	42.542	6189.43	1173.53	1076.94	0.00	-1011.27
LP/TPZ	7721.17	90.000	183.340	6997.00	557.82	1272.25	9.00	-374.29
T1	7920.90	90.000	183.340	6997.00	358.43	1260.61	0.00	-178.49
3D Arc (J)	8314.63	90.000	179.403	6997.00	-35.11	1251.19	1.00	209.86
BHL	17834.42	90.000	179.403	6997.00	-9554.39	1350.35	0.00	9649.34





Planned Wellpath Report

PIONEER Y18-725 (REV-1.0) PWP

Page 1 of 8



REFERENCE WELLPATH IDENTIFICATION			
Operator	NOBLE ENERGY, INC	Well	PIONEER Y18-725
Field	WELD COUNTY (NOBLE NAD 83 GRID)	API/Legal	
Facility	SEC.07-T02N-R64W	Wellbore	PIONEER Y18-725 PWB
Slot	SLOT#19 PIONEER Y18-725 (726'FNL & 2239'FEL,SEC.07)		

REPORT SETUP INFORMATION			
Projection System	NAD83 / Lambert Colorado SP, Northern Zone (501), US feet	Software System	WellArchitect® 6.0
North Reference	Grid	User	Guenaler
Scale	0.999958	Report Generated	5/23/2022 at 7:30:34 AM
Convergence at slot	0.59° East	Database	WellArchitectDB

WELLPATH LOCATION						
	Local coordinates		Grid coordinates		Geographic coordinates	
	North[ft]	East[ft]	Easting[US ft]	Northing[US ft]	Latitude	Longitude
Slot Location	-24.06	926.33	3253585.32	1301695.54	40°09'28.7568"N	104°35'33.7812"W
Facility Reference Pt			3252659.03	1301719.60	40°09'29.0880"N	104°35'45.7080"W
Field Reference Pt			3000000.00	4454105.15	48°46'34.3150"N	105°30'0.0000"W

WELLPATH DATUM			
Calculation method	Minimum curvature	(4884'GL+30'KB@4914'RKB) (RKB) to Facility Vertical Datum	4914.00ft
Horizontal Reference Pt	Slot	(4884'GL+30'KB@4914'RKB) (RKB) to Mean Sea Level	4914.00ft
Vertical Reference Pt	(4884'GL+30'KB@4914'RKB) (RKB)	(4884'GL+30'KB@4914'RKB) (RKB) to Mud Line at Slot (SLOT#19 PIONEER Y18-725 (726'FNL & 2239'FEL,SEC.07))	4914.00ft
MD Reference Pt	(4884'GL+30'KB@4914'RKB) (RKB)	Section Origin	N 0.00, E 0.00 ft
Field Vertical Reference	Mean Sea Level	Section Azimuth	171.96°



Planned Wellpath Report
PIONEER Y18-725 (REV-1.0) PWP
Page 2 of 8



REFERENCE WELLPATH IDENTIFICATION			
Operator	NOBLE ENERGY, INC	Well	PIONEER Y18-725
Field	WELD COUNTY (NOBLE NAD 83 GRID)	API/Legal	
Facility	SEC.07-T02N-R64W	Wellbore	PIONEER Y18-725 PWB
Slot	SLOT#19 PIONEER Y18-725 (726'FNL & 2239'FEL,SEC.07)		

WELLPATH DATA (187 stations) † = interpolated, ‡ = extrapolated station										
MD [ft]	Inclination [°]	Azimuth [°]	TVD [ft]	Vert Sect [ft]	North [ft]	East [ft]	Latitude	Longitude	DLS [°/100ft]	Comments
0.00†	0.000	42.542	0.00	0.00	0.00	0.00	40°09'28.7568"N	104°35'33.7812"W	0.00	
30.00	0.000	42.542	30.00	0.00	0.00	0.00	40°09'28.7568"N	104°35'33.7812"W	0.00	SHL
130.00†	0.000	42.542	130.00	0.00	0.00	0.00	40°09'28.7568"N	104°35'33.7812"W	0.00	
230.00†	0.000	42.542	230.00	0.00	0.00	0.00	40°09'28.7568"N	104°35'33.7812"W	0.00	
330.00†	0.000	42.542	330.00	0.00	0.00	0.00	40°09'28.7568"N	104°35'33.7812"W	0.00	
430.00†	0.000	42.542	430.00	0.00	0.00	0.00	40°09'28.7568"N	104°35'33.7812"W	0.00	
530.00†	0.000	42.542	530.00	0.00	0.00	0.00	40°09'28.7568"N	104°35'33.7812"W	0.00	
630.00†	0.000	42.542	630.00	0.00	0.00	0.00	40°09'28.7568"N	104°35'33.7812"W	0.00	
730.00†	0.000	42.542	730.00	0.00	0.00	0.00	40°09'28.7568"N	104°35'33.7812"W	0.00	
830.00†	0.000	42.542	830.00	0.00	0.00	0.00	40°09'28.7568"N	104°35'33.7812"W	0.00	
930.00†	0.000	42.542	930.00	0.00	0.00	0.00	40°09'28.7568"N	104°35'33.7812"W	0.00	
1030.00†	0.000	42.542	1030.00	0.00	0.00	0.00	40°09'28.7568"N	104°35'33.7812"W	0.00	
1130.00†	0.000	42.542	1130.00	0.00	0.00	0.00	40°09'28.7568"N	104°35'33.7812"W	0.00	
1230.00†	0.000	42.542	1230.00	0.00	0.00	0.00	40°09'28.7568"N	104°35'33.7812"W	0.00	
1330.00†	0.000	42.542	1330.00	0.00	0.00	0.00	40°09'28.7568"N	104°35'33.7812"W	0.00	
1430.00†	0.000	42.542	1430.00	0.00	0.00	0.00	40°09'28.7568"N	104°35'33.7812"W	0.00	
1530.00†	0.000	42.542	1530.00	0.00	0.00	0.00	40°09'28.7568"N	104°35'33.7812"W	0.00	
1630.00†	0.000	42.542	1630.00	0.00	0.00	0.00	40°09'28.7568"N	104°35'33.7812"W	0.00	
1730.00†	0.000	42.542	1730.00	0.00	0.00	0.00	40°09'28.7568"N	104°35'33.7812"W	0.00	
1830.00†	0.000	42.542	1830.00	0.00	0.00	0.00	40°09'28.7568"N	104°35'33.7812"W	0.00	
1930.00†	0.000	42.542	1930.00	0.00	0.00	0.00	40°09'28.7568"N	104°35'33.7812"W	0.00	
2030.00†	0.000	42.542	2030.00	0.00	0.00	0.00	40°09'28.7568"N	104°35'33.7812"W	0.00	
2050.00	0.000	42.542	2050.00	0.00	0.00	0.00	40°09'28.7568"N	104°35'33.7812"W	0.00	End of Tangent
2130.00†	1.600	42.542	2129.99	-0.71	0.82	0.76	40°09'28.7649"N	104°35'33.7714"W	2.00	
2230.00†	3.600	42.542	2229.88	-3.59	4.17	3.82	40°09'28.7976"N	104°35'33.7314"W	2.00	
2330.00†	5.600	42.542	2329.55	-8.68	10.07	9.24	40°09'28.8554"N	104°35'33.6608"W	2.00	
2430.00†	7.600	42.542	2428.89	-15.98	18.54	17.02	40°09'28.9383"N	104°35'33.5596"W	2.00	
2530.00†	9.600	42.542	2527.76	-25.47	29.56	27.13	40°09'29.0461"N	104°35'33.4280"W	2.00	
2630.00†	11.600	42.542	2626.05	-37.15	43.11	39.56	40°09'29.1788"N	104°35'33.2660"W	2.00	
2730.00†	13.600	42.542	2723.63	-51.00	59.18	54.31	40°09'29.3361"N	104°35'33.0739"W	2.00	
2830.00†	15.600	42.542	2820.40	-67.00	77.75	71.35	40°09'29.5179"N	104°35'32.8520"W	2.00	
2930.00†	17.600	42.542	2916.23	-85.14	98.80	90.67	40°09'29.7239"N	104°35'32.6005"W	2.00	
3030.00†	19.600	42.542	3011.00	-105.39	122.30	112.23	40°09'29.9540"N	104°35'32.3197"W	2.00	
3130.00†	21.600	42.542	3104.60	-127.73	148.22	136.02	40°09'30.2077"N	104°35'32.0099"W	2.00	
3230.00†	23.600	42.542	3196.92	-152.13	176.53	162.00	40°09'30.4848"N	104°35'31.6715"W	2.00	
3266.81	24.336	42.542	3230.55	-161.62	187.55	172.11	40°09'30.5927"N	104°35'31.5399"W	2.00	Build (XS)
3330.00†	24.336	42.542	3288.13	-178.15	206.74	189.72	40°09'30.7805"N	104°35'31.3106"W	0.00	
3430.00†	24.336	42.542	3379.24	-204.32	237.10	217.58	40°09'31.0777"N	104°35'30.9477"W	0.00	
3530.00†	24.336	42.542	3470.36	-230.48	267.46	245.45	40°09'31.3749"N	104°35'30.5849"W	0.00	
3630.00†	24.336	42.542	3561.47	-256.64	297.82	273.31	40°09'31.6721"N	104°35'30.2220"W	0.00	
3730.00†	24.336	42.542	3652.58	-282.81	328.18	301.17	40°09'31.9693"N	104°35'29.8592"W	0.00	
3830.00†	24.336	42.542	3743.70	-308.97	358.55	329.03	40°09'32.2665"N	104°35'29.4964"W	0.00	
3930.00†	24.336	42.542	3834.81	-335.14	388.91	356.90	40°09'32.5637"N	104°35'29.1335"W	0.00	
4030.00†	24.336	42.542	3925.93	-361.30	419.27	384.76	40°09'32.8609"N	104°35'28.7707"W	0.00	
4130.00†	24.336	42.542	4017.04	-387.46	449.63	412.62	40°09'33.1581"N	104°35'28.4078"W	0.00	



Planned Wellpath Report
PIONEER Y18-725 (REV-1.0) PWP
Page 3 of 8



REFERENCE WELLPATH IDENTIFICATION			
Operator	NOBLE ENERGY, INC	Well	PIONEER Y18-725
Field	WELD COUNTY (NOBLE NAD 83 GRID)	API/Legal	
Facility	SEC.07-T02N-R64W	Wellbore	PIONEER Y18-725 PWB
Slot	SLOT#19 PIONEER Y18-725 (726'FNL & 2239'FEL,SEC.07)		

WELLPATH DATA (187 stations) † = interpolated, ‡ = extrapolated station										
MD [ft]	Inclination [°]	Azimuth [°]	TVD [ft]	Vert Sect [ft]	North [ft]	East [ft]	Latitude	Longitude	DLS [°/100ft]	Comments
4230.00†	24.336	42.542	4108.16	-413.63	479.99	440.49	40°09'33.4553"N	104°35'28.0450"W	0.00	
4330.00†	24.336	42.542	4199.27	-439.79	510.36	468.35	40°09'33.7525"N	104°35'27.6821"W	0.00	
4430.00†	24.336	42.542	4290.38	-465.96	540.72	496.21	40°09'34.0497"N	104°35'27.3193"W	0.00	
4530.00†	24.336	42.542	4381.50	-492.12	571.08	524.07	40°09'34.3469"N	104°35'26.9564"W	0.00	
4630.00†	24.336	42.542	4472.61	-518.28	601.44	551.94	40°09'34.6441"N	104°35'26.5936"W	0.00	
4730.00†	24.336	42.542	4563.73	-544.45	631.80	579.80	40°09'34.9413"N	104°35'26.2307"W	0.00	
4830.00†	24.336	42.542	4654.84	-570.61	662.16	607.66	40°09'35.2385"N	104°35'25.8678"W	0.00	
4930.00†	24.336	42.542	4745.96	-596.77	692.53	635.52	40°09'35.5357"N	104°35'25.5050"W	0.00	
5030.00†	24.336	42.542	4837.07	-622.94	722.89	663.39	40°09'35.8329"N	104°35'25.1421"W	0.00	
5130.00†	24.336	42.542	4928.18	-649.10	753.25	691.25	40°09'36.1301"N	104°35'24.7793"W	0.00	
5230.00†	24.336	42.542	5019.30	-675.27	783.61	719.11	40°09'36.4273"N	104°35'24.4164"W	0.00	
5330.00†	24.336	42.542	5110.41	-701.43	813.97	746.98	40°09'36.7245"N	104°35'24.0535"W	0.00	
5430.00†	24.336	42.542	5201.53	-727.59	844.34	774.84	40°09'37.0217"N	104°35'23.6907"W	0.00	
5530.00†	24.336	42.542	5292.64	-753.76	874.70	802.70	40°09'37.3189"N	104°35'23.3278"W	0.00	
5630.00†	24.336	42.542	5383.76	-779.92	905.06	830.56	40°09'37.6161"N	104°35'22.9650"W	0.00	
5730.00†	24.336	42.542	5474.87	-806.09	935.42	858.43	40°09'37.9132"N	104°35'22.6021"W	0.00	
5830.00†	24.336	42.542	5565.99	-832.25	965.78	886.29	40°09'38.2104"N	104°35'22.2392"W	0.00	
5930.00†	24.336	42.542	5657.10	-858.41	996.14	914.15	40°09'38.5076"N	104°35'21.8764"W	0.00	
6030.00†	24.336	42.542	5748.21	-884.58	1026.51	942.02	40°09'38.8048"N	104°35'21.5135"W	0.00	
6130.00†	24.336	42.542	5839.33	-910.74	1056.87	969.88	40°09'39.1020"N	104°35'21.1506"W	0.00	
6230.00†	24.336	42.542	5930.44	-936.90	1087.23	997.74	40°09'39.3992"N	104°35'20.7878"W	0.00	
6330.00†	24.336	42.542	6021.56	-963.07	1117.59	1025.60	40°09'39.6964"N	104°35'20.4249"W	0.00	
6430.00†	24.336	42.542	6112.67	-989.23	1147.95	1053.47	40°09'39.9936"N	104°35'20.0620"W	0.00	
6514.25	24.336	42.542	6189.43	-1011.27	1173.53	1076.94	40°09'40.2440"N	104°35'19.7563"W	0.00	KOP
6530.00†	23.298	44.934	6203.84	-1015.21	1178.13	1081.33	40°09'40.2890"N	104°35'19.6991"W	9.00	
6630.00†	17.891	65.658	6297.54	-1031.46	1198.50	1109.35	40°09'40.4874"N	104°35'19.3355"W	9.00	
6730.00†	15.973	96.230	6393.39	-1032.38	1203.35	1137.08	40°09'40.5325"N	104°35'18.9778"W	9.00	
6830.00†	18.653	125.474	6489.03	-1017.95	1192.55	1163.84	40°09'40.4231"N	104°35'18.6346"W	9.00	
6930.00†	24.465	144.416	6582.11	-988.52	1166.38	1188.96	40°09'40.1619"N	104°35'18.3145"W	9.00	
7030.00†	31.728	155.802	6670.33	-944.81	1125.47	1211.84	40°09'39.7554"N	104°35'18.0253"W	9.00	
7130.00†	39.651	163.163	6751.52	-887.90	1070.84	1231.90	40°09'39.2134"N	104°35'17.7742"W	9.00	
7230.00†	47.904	168.374	6823.68	-819.20	1003.82	1248.65	40°09'38.5495"N	104°35'17.5673"W	9.00	
7330.00†	56.337	172.366	6885.04	-740.40	926.07	1261.68	40°09'37.7799"N	104°35'17.4097"W	9.00	
7430.00†	64.876	175.637	6934.09	-653.43	839.51	1270.68	40°09'36.9236"N	104°35'17.3054"W	9.00	
7530.00†	73.477	178.476	6969.61	-560.44	746.26	1275.40	40°09'36.0017"N	104°35'17.2568"W	9.00	
7630.00†	82.113	181.071	6990.73	-463.71	648.62	1275.75	40°09'35.0369"N	104°35'17.2653"W	9.00	
7721.17	90.000	183.340	6997.00 ¹	-374.29	557.82	1272.25	40°09'34.1399"N	104°35'17.3224"W	9.00	LP/TPZ
7730.00†	90.000	183.340	6997.00	-365.63	549.00	1271.73	40°09'34.0529"N	104°35'17.3302"W	0.00	
7830.00†	90.000	183.340	6997.00	-267.60	449.17	1265.91	40°09'33.0670"N	104°35'17.4185"W	0.00	
7920.90	90.000	183.340	6997.00 ²	-178.49	358.43	1260.61	40°09'32.1708"N	104°35'17.4987"W	0.00	T1
7930.00†	90.000	183.249	6997.00	-169.56	349.34	1260.09	40°09'32.0811"N	104°35'17.5067"W	1.00	
8030.00†	90.000	182.249	6997.00	-71.33	249.46	1255.29	40°09'31.0946"N	104°35'17.5817"W	1.00	
8130.00†	90.000	181.249	6997.00	27.21	149.50	1252.24	40°09'30.1072"N	104°35'17.6342"W	1.00	
8230.00†	90.000	180.249	6997.00	126.03	49.51	1250.93	40°09'29.1193"N	104°35'17.6643"W	1.00	
8314.63	90.000	179.403	6997.00	209.86	-35.11	1251.19	40°09'28.2830"N	104°35'17.6722"W	1.00	3D Arc (J)



Planned Wellpath Report
PIONEER Y18-725 (REV-1.0) PWP
Page 4 of 8



REFERENCE WELLPATH IDENTIFICATION			
Operator	NOBLE ENERGY, INC	Well	PIONEER Y18-725
Field	WELD COUNTY (NOBLE NAD 83 GRID)	API/Legal	
Facility	SEC.07-T02N-R64W	Wellbore	PIONEER Y18-725 PWB
Slot	SLOT#19 PIONEER Y18-725 (726'FNL & 2239'FEL,SEC.07)		

WELLPATH DATA (187 stations) † = interpolated, ‡ = extrapolated station										
MD [ft]	Inclination [°]	Azimuth [°]	TVD [ft]	Vert Sect [ft]	North [ft]	East [ft]	Latitude	Longitude	DLS [°/100ft]	Comments
8330.00†	90.000	179.403	6997.00	225.10	-50.48	1251.35	40°09'28.1311"N	104°35'17.6722"W	0.00	
8430.00†	90.000	179.403	6997.00	324.26	-150.48	1252.39	40°09'27.1429"N	104°35'17.6720"W	0.00	
8530.00†	90.000	179.403	6997.00	423.42	-250.47	1253.43	40°09'26.1547"N	104°35'17.6718"W	0.00	
8630.00†	90.000	179.403	6997.00	522.57	-350.47	1254.47	40°09'25.1665"N	104°35'17.6717"W	0.00	
8730.00†	90.000	179.403	6997.00	621.73	-450.46	1255.51	40°09'24.1783"N	104°35'17.6715"W	0.00	
8830.00†	90.000	179.403	6997.00	720.89	-550.46	1256.55	40°09'23.1901"N	104°35'17.6713"W	0.00	
8930.00†	90.000	179.403	6997.00	820.04	-650.45	1257.60	40°09'22.2019"N	104°35'17.6711"W	0.00	
9030.00†	90.000	179.403	6997.00	919.20	-750.45	1258.64	40°09'21.2137"N	104°35'17.6710"W	0.00	
9130.00†	90.000	179.403	6997.00	1018.35	-850.44	1259.68	40°09'20.2255"N	104°35'17.6708"W	0.00	
9230.00†	90.000	179.403	6997.00	1117.51	-950.44	1260.72	40°09'19.2373"N	104°35'17.6706"W	0.00	
9330.00†	90.000	179.403	6997.00	1216.67	-1050.43	1261.76	40°09'18.2491"N	104°35'17.6705"W	0.00	
9430.00†	90.000	179.403	6997.00	1315.82	-1150.42	1262.80	40°09'17.2608"N	104°35'17.6703"W	0.00	
9530.00†	90.000	179.403	6997.00	1414.98	-1250.42	1263.85	40°09'16.2726"N	104°35'17.6701"W	0.00	
9630.00†	90.000	179.403	6997.00	1514.14	-1350.41	1264.89	40°09'15.2844"N	104°35'17.6699"W	0.00	
9730.00†	90.000	179.403	6997.00	1613.29	-1450.41	1265.93	40°09'14.2962"N	104°35'17.6698"W	0.00	
9830.00†	90.000	179.403	6997.00	1712.45	-1550.40	1266.97	40°09'13.3080"N	104°35'17.6696"W	0.00	
9930.00†	90.000	179.403	6997.00	1811.61	-1650.40	1268.01	40°09'12.3198"N	104°35'17.6694"W	0.00	
10030.00†	90.000	179.403	6997.00	1910.76	-1750.39	1269.05	40°09'11.3316"N	104°35'17.6692"W	0.00	
10130.00†	90.000	179.403	6997.00	2009.92	-1850.39	1270.10	40°09'10.3434"N	104°35'17.6691"W	0.00	
10230.00†	90.000	179.403	6997.00	2109.07	-1950.38	1271.14	40°09'9.3552"N	104°35'17.6689"W	0.00	
10330.00†	90.000	179.403	6997.00	2208.23	-2050.38	1272.18	40°09'8.3670"N	104°35'17.6687"W	0.00	
10430.00†	90.000	179.403	6997.00	2307.39	-2150.37	1273.22	40°09'7.3788"N	104°35'17.6685"W	0.00	
10530.00†	90.000	179.403	6997.00	2406.54	-2250.36	1274.26	40°09'6.3906"N	104°35'17.6684"W	0.00	
10630.00†	90.000	179.403	6997.00	2505.70	-2350.36	1275.30	40°09'5.4024"N	104°35'17.6682"W	0.00	
10730.00†	90.000	179.403	6997.00	2604.86	-2450.35	1276.35	40°09'4.4142"N	104°35'17.6680"W	0.00	
10830.00†	90.000	179.403	6997.00	2704.01	-2550.35	1277.39	40°09'3.4260"N	104°35'17.6678"W	0.00	
10930.00†	90.000	179.403	6997.00	2803.17	-2650.34	1278.43	40°09'2.4378"N	104°35'17.6677"W	0.00	
11030.00†	90.000	179.403	6997.00	2902.33	-2750.34	1279.47	40°09'1.4496"N	104°35'17.6675"W	0.00	
11130.00†	90.000	179.403	6997.00	3001.48	-2850.33	1280.51	40°09'0.4613"N	104°35'17.6673"W	0.00	
11230.00†	90.000	179.403	6997.00	3100.64	-2950.33	1281.55	40°08'59.4731"N	104°35'17.6672"W	0.00	
11330.00†	90.000	179.403	6997.00	3199.79	-3050.32	1282.60	40°08'58.4849"N	104°35'17.6670"W	0.00	
11430.00†	90.000	179.403	6997.00	3298.95	-3150.32	1283.64	40°08'57.4967"N	104°35'17.6668"W	0.00	
11530.00†	90.000	179.403	6997.00	3398.11	-3250.31	1284.68	40°08'56.5085"N	104°35'17.6666"W	0.00	
11630.00†	90.000	179.403	6997.00	3497.26	-3350.31	1285.72	40°08'55.5203"N	104°35'17.6665"W	0.00	
11730.00†	90.000	179.403	6997.00	3596.42	-3450.30	1286.76	40°08'54.5321"N	104°35'17.6663"W	0.00	
11830.00†	90.000	179.403	6997.00	3695.58	-3550.29	1287.80	40°08'53.5439"N	104°35'17.6661"W	0.00	
11930.00†	90.000	179.403	6997.00	3794.73	-3650.29	1288.85	40°08'52.5557"N	104°35'17.6659"W	0.00	
12030.00†	90.000	179.403	6997.00	3893.89	-3750.28	1289.89	40°08'51.5675"N	104°35'17.6658"W	0.00	
12130.00†	90.000	179.403	6997.00	3993.05	-3850.28	1290.93	40°08'50.5793"N	104°35'17.6656"W	0.00	
12230.00†	90.000	179.403	6997.00	4092.20	-3950.27	1291.97	40°08'49.5911"N	104°35'17.6654"W	0.00	
12330.00†	90.000	179.403	6997.00	4191.36	-4050.27	1293.01	40°08'48.6029"N	104°35'17.6652"W	0.00	
12430.00†	90.000	179.403	6997.00	4290.51	-4150.26	1294.05	40°08'47.6147"N	104°35'17.6651"W	0.00	
12530.00†	90.000	179.403	6997.00	4389.67	-4250.26	1295.10	40°08'46.6265"N	104°35'17.6649"W	0.00	
12630.00†	90.000	179.403	6997.00	4488.83	-4350.25	1296.14	40°08'45.6382"N	104°35'17.6647"W	0.00	
12730.00†	90.000	179.403	6997.00	4587.98	-4450.25	1297.18	40°08'44.6500"N	104°35'17.6646"W	0.00	



Planned Wellpath Report

PIONEER Y18-725 (REV-1.0) PWP

Page 5 of 8



REFERENCE WELLPATH IDENTIFICATION			
Operator	NOBLE ENERGY, INC	Well	PIONEER Y18-725
Field	WELD COUNTY (NOBLE NAD 83 GRID)	API/Legal	
Facility	SEC.07-T02N-R64W	Wellbore	PIONEER Y18-725 PWB
Slot	SLOT#19 PIONEER Y18-725 (726'FNL & 2239'FEL,SEC.07)		

WELLPATH DATA (187 stations) † = interpolated, ‡ = extrapolated station										
MD [ft]	Inclination [°]	Azimuth [°]	TVD [ft]	Vert Sect [ft]	North [ft]	East [ft]	Latitude	Longitude	DLS [°/100ft]	Comments
12830.00†	90.000	179.403	6997.00	4687.14	-4550.24	1298.22	40°08'43.6618"N	104°35'17.6644"W	0.00	
12930.00†	90.000	179.403	6997.00	4786.30	-4650.23	1299.26	40°08'42.6736"N	104°35'17.6642"W	0.00	
13030.00†	90.000	179.403	6997.00	4885.45	-4750.23	1300.30	40°08'41.6854"N	104°35'17.6640"W	0.00	
13130.00†	90.000	179.403	6997.00	4984.61	-4850.22	1301.35	40°08'40.6972"N	104°35'17.6639"W	0.00	
13230.00†	90.000	179.403	6997.00	5083.77	-4950.22	1302.39	40°08'39.7090"N	104°35'17.6637"W	0.00	
13330.00†	90.000	179.403	6997.00	5182.92	-5050.21	1303.43	40°08'38.7208"N	104°35'17.6635"W	0.00	
13430.00†	90.000	179.403	6997.00	5282.08	-5150.21	1304.47	40°08'37.7326"N	104°35'17.6633"W	0.00	
13530.00†	90.000	179.403	6997.00	5381.23	-5250.20	1305.51	40°08'36.7444"N	104°35'17.6632"W	0.00	
13630.00†	90.000	179.403	6997.00	5480.39	-5350.20	1306.55	40°08'35.7562"N	104°35'17.6630"W	0.00	
13730.00†	90.000	179.403	6997.00	5579.55	-5450.19	1307.60	40°08'34.7680"N	104°35'17.6628"W	0.00	
13830.00†	90.000	179.403	6997.00	5678.70	-5550.19	1308.64	40°08'33.7798"N	104°35'17.6626"W	0.00	
13930.00†	90.000	179.403	6997.00	5777.86	-5650.18	1309.68	40°08'32.7916"N	104°35'17.6625"W	0.00	
14030.00†	90.000	179.403	6997.00	5877.02	-5750.17	1310.72	40°08'31.8033"N	104°35'17.6623"W	0.00	
14130.00†	90.000	179.403	6997.00	5976.17	-5850.17	1311.76	40°08'30.8151"N	104°35'17.6621"W	0.00	
14230.00†	90.000	179.403	6997.00	6075.33	-5950.16	1312.80	40°08'29.8269"N	104°35'17.6620"W	0.00	
14330.00†	90.000	179.403	6997.00	6174.49	-6050.16	1313.85	40°08'28.8387"N	104°35'17.6618"W	0.00	
14430.00†	90.000	179.403	6997.00	6273.64	-6150.15	1314.89	40°08'27.8505"N	104°35'17.6616"W	0.00	
14530.00†	90.000	179.403	6997.00	6372.80	-6250.15	1315.93	40°08'26.8623"N	104°35'17.6614"W	0.00	
14630.00†	90.000	179.403	6997.00	6471.95	-6350.14	1316.97	40°08'25.8741"N	104°35'17.6613"W	0.00	
14730.00†	90.000	179.403	6997.00	6571.11	-6450.14	1318.01	40°08'24.8859"N	104°35'17.6611"W	0.00	
14830.00†	90.000	179.403	6997.00	6670.27	-6550.13	1319.05	40°08'23.8977"N	104°35'17.6609"W	0.00	
14930.00†	90.000	179.403	6997.00	6769.42	-6650.13	1320.10	40°08'22.9095"N	104°35'17.6607"W	0.00	
15030.00†	90.000	179.403	6997.00	6868.58	-6750.12	1321.14	40°08'21.9213"N	104°35'17.6606"W	0.00	
15130.00†	90.000	179.403	6997.00	6967.74	-6850.12	1322.18	40°08'20.9331"N	104°35'17.6604"W	0.00	
15230.00†	90.000	179.403	6997.00	7066.89	-6950.11	1323.22	40°08'19.9449"N	104°35'17.6602"W	0.00	
15330.00†	90.000	179.403	6997.00	7166.05	-7050.10	1324.26	40°08'18.9566"N	104°35'17.6601"W	0.00	
15430.00†	90.000	179.403	6997.00	7265.21	-7150.10	1325.30	40°08'17.9684"N	104°35'17.6599"W	0.00	
15530.00†	90.000	179.403	6997.00	7364.36	-7250.09	1326.35	40°08'16.9802"N	104°35'17.6597"W	0.00	
15630.00†	90.000	179.403	6997.00	7463.52	-7350.09	1327.39	40°08'15.9920"N	104°35'17.6595"W	0.00	
15730.00†	90.000	179.403	6997.00	7562.67	-7450.08	1328.43	40°08'15.0038"N	104°35'17.6594"W	0.00	
15830.00†	90.000	179.403	6997.00	7661.83	-7550.08	1329.47	40°08'14.0156"N	104°35'17.6592"W	0.00	
15930.00†	90.000	179.403	6997.00	7760.99	-7650.07	1330.51	40°08'13.0274"N	104°35'17.6590"W	0.00	
16030.00†	90.000	179.403	6997.00	7860.14	-7750.07	1331.55	40°08'12.0392"N	104°35'17.6588"W	0.00	
16130.00†	90.000	179.403	6997.00	7959.30	-7850.06	1332.60	40°08'11.0510"N	104°35'17.6587"W	0.00	
16230.00†	90.000	179.403	6997.00	8058.46	-7950.06	1333.64	40°08'10.0628"N	104°35'17.6585"W	0.00	
16330.00†	90.000	179.403	6997.00	8157.61	-8050.05	1334.68	40°08'9.0746"N	104°35'17.6583"W	0.00	
16430.00†	90.000	179.403	6997.00	8256.77	-8150.04	1335.72	40°08'8.0864"N	104°35'17.6581"W	0.00	
16530.00†	90.000	179.403	6997.00	8355.93	-8250.04	1336.76	40°08'7.0982"N	104°35'17.6580"W	0.00	
16630.00†	90.000	179.403	6997.00	8455.08	-8350.03	1337.80	40°08'6.1099"N	104°35'17.6578"W	0.00	
16730.00†	90.000	179.403	6997.00	8554.24	-8450.03	1338.85	40°08'5.1217"N	104°35'17.6576"W	0.00	
16830.00†	90.000	179.403	6997.00	8653.39	-8550.02	1339.89	40°08'4.1335"N	104°35'17.6575"W	0.00	
16930.00†	90.000	179.403	6997.00	8752.55	-8650.02	1340.93	40°08'3.1453"N	104°35'17.6573"W	0.00	
17030.00†	90.000	179.403	6997.00	8851.71	-8750.01	1341.97	40°08'2.1571"N	104°35'17.6571"W	0.00	
17130.00†	90.000	179.403	6997.00	8950.86	-8850.01	1343.01	40°08'1.1689"N	104°35'17.6569"W	0.00	
17230.00†	90.000	179.403	6997.00	9050.02	-8950.00	1344.05	40°08'0.1807"N	104°35'17.6568"W	0.00	



Planned Wellpath Report

PIONEER Y18-725 (REV-1.0) PWP

Page 6 of 8



REFERENCE WELLPATH IDENTIFICATION

Operator	NOBLE ENERGY, INC	Well	PIONEER Y18-725
Field	WELD COUNTY (NOBLE NAD 83 GRID)	API/Legal	
Facility	SEC.07-T02N-R64W	Wellbore	PIONEER Y18-725 PWB
Slot	SLOT#19 PIONEER Y18-725 (726'FNL & 2239'FEL,SEC.07)		

WELLPATH DATA (187 stations) † = interpolated, ‡ = extrapolated station

MD [ft]	Inclination [°]	Azimuth [°]	TVD [ft]	Vert Sect [ft]	North [ft]	East [ft]	Latitude	Longitude	DLS [°/100ft]	Comments
17330.00†	90.000	179.403	6997.00	9149.18	-9050.00	1345.09	40°07'59.1925"N	104°35'17.6566"W	0.00	
17430.00†	90.000	179.403	6997.00	9248.33	-9149.99	1346.14	40°07'58.2043"N	104°35'17.6564"W	0.00	
17530.00†	90.000	179.403	6997.00	9347.49	-9249.98	1347.18	40°07'57.2161"N	104°35'17.6562"W	0.00	
17630.00†	90.000	179.403	6997.00	9446.65	-9349.98	1348.22	40°07'56.2279"N	104°35'17.6561"W	0.00	
17730.00†	90.000	179.403	6997.00	9545.80	-9449.97	1349.26	40°07'55.2396"N	104°35'17.6559"W	0.00	
17830.00†	90.000	179.403	6997.00	9644.96	-9549.97	1350.30	40°07'54.2514"N	104°35'17.6557"W	0.00	
17834.42	90.000	179.403	6997.00 ³	9649.34	-9554.39	1350.35	40°07'54.2078"N	104°35'17.6557"W	0.00	BHL

HOLE & CASING SECTIONS - Ref Wellbore: PIONEER Y18-725 PWB Ref Wellpath: PIONEER Y18-725 (REV-1.0) PWP

String/Diameter	Start MD [ft]	End MD [ft]	Interval [ft]	Start TVD [ft]	End TVD [ft]	Start N/S [ft]	Start E/W [ft]	End N/S [ft]	End E/W [ft]
9.625in Casing Surface	30.00	1950.00	1920.00	30.00	1950.00	0.00	0.00	0.00	0.00

TARGETS

Name	MD [ft]	TVD [ft]	North [ft]	East [ft]	Grid East [US ft]	Grid North [US ft]	Latitude	Longitude	Shape
PIONEER Y18-785 SECTION 18	N/A	-1.00	21.61	-808.90	3252776.45	1301717.15	40°09'29.0520"N	104°35'44.1960"W	polygon
	2D Polygon: dimensions not calculated								
PIONEER Y18-785 SECTION 7	N/A	-1.00	21.61	-808.90	3252776.45	1301717.15	40°09'29.0520"N	104°35'44.1960"W	polygon
	2D Polygon: dimensions not calculated								
3) PIONEER Y18-725 BHL PLAN (200'FSL & 977'FEL,SEC.18)	17834.42	6997.00	-9554.39	1350.35	3254935.61	1292141.58	40°07'54.2078"N	104°35'17.6557"W	point
1) PIONEER Y18-725 LP PLAN (200'FNL & 971'FEL,SEC.07)	7721.17	6997.00	557.82	1272.25	3254857.52	1302253.34	40°09'34.1399"N	104°35'17.3224"W	point
2) PIONEER Y18-725 T1	7920.90	6997.00	358.43	1260.61	3254845.88	1302053.95	40°09'32.1708"N	104°35'17.4987"W	point
SECTION LINES - SEC.06-T02N-R64W	N/A	7997.00	5934.25	-2903.29	3250682.16	1307629.53	40°10'27.6881"N	104°36'10.3986"W	polygon
	2D Polygon: dimensions not calculated								
SECTION LINES - SEC.31-T03N-R64W	N/A	7997.00	11224.21	-2936.04	3250649.42	1312919.26	40°11'19.9642"N	104°36'10.1310"W	polygon
	2D Polygon: dimensions not calculated								



Planned Wellpath Report

PIONEER Y18-725 (REV-1.0) PWP

Page 7 of 8



REFERENCE WELLPATH IDENTIFICATION			
Operator	NOBLE ENERGY, INC	Well	PIONEER Y18-725
Field	WELD COUNTY (NOBLE NAD 83 GRID)	API/Legal	
Facility	SEC.07-T02N-R64W	Wellbore	PIONEER Y18-725 PWB
Slot	SLOT#19 PIONEER Y18-725 (726'FNL & 2239'FEL,SEC.07)		

SURVEY PROGRAM - Ref Wellbore: PIONEER Y18-725 PWB Ref Wellpath: PIONEER Y18-725 (REV-1.0) PWP				
Start MD [ft]	End MD [ft]	Positional Uncertainty Model	Log Name/Comment	Wellbore
30.00	1950.00	Gyrodata 2015 - GC+DROP+COND		PIONEER Y18-725 PWB
1950.00	17867.84	OWSG MWD rev2 (MS+IFR1)		PIONEER Y18-725 PWB



Planned Wellpath Report
PIONEER Y18-725 (REV-1.0) PWP
Page 8 of 8



REFERENCE WELLPATH IDENTIFICATION			
Operator	NOBLE ENERGY, INC	Well	PIONEER Y18-725
Field	WELD COUNTY (NOBLE NAD 83 GRID)	API/Legal	
Facility	SEC.07-T02N-R64W	Wellbore	PIONEER Y18-725 PWB
Slot	SLOT#19 PIONEER Y18-725 (726'FNL & 2239'FEL,SEC.07)		

DESIGN COMMENTS				
MD [ft]	Inclination [°]	Azimuth [°]	TVD [ft]	Comment
30.00	0.000	42.542	30.00	SHL
2050.00	0.000	42.542	2050.00	End of Tangent
3266.81	24.336	42.542	3230.55	Build (XS)
6514.25	24.336	42.542	6189.43	KOP
7721.17	90.000	183.340	6997.00	LP/TPZ
7920.90	90.000	183.340	6997.00	T1
8314.63	90.000	179.403	6997.00	3D Arc (J)
17834.42	90.000	179.403	6997.00	BHL



Closest Approach Clearance Summary Report

PIONEER Y18-725 (REV-1.0) PWP - SPE WPTS Stop Drilling HSE Risk (2017)

Page 1 of 4



REFERENCE WELLPATH IDENTIFICATION			
Operator	NOBLE ENERGY, INC	Well	PIONEER Y18-725
Field	WELD COUNTY (NOBLE NAD 83 GRID)	API/Legal	
Facility	SEC.07-T02N-R64W	Wellbore	PIONEER Y18-725 PWB
Slot	SLOT#19 PIONEER Y18-725 (726'FNL & 2239'FEL,SEC.07)		

REPORT SETUP INFORMATION			
Projection System	NAD83 / Lambert Colorado SP, Northern Zone (501), US feet	Software System	WellArchitect® 6.0
North Reference	Grid	User	Guenaler
Scale	0.999958	Report Generated	5/23/2022 at 8:00:04 AM
Convergence at slot	0.59° East	Database	WellArchitectDB

WELLPATH LOCATION						
	Local coordinates		Grid coordinates		Geographic coordinates	
	North[ft]	East[ft]	Easting[US ft]	Northing[US ft]	Latitude	Longitude
Slot Location	-24.06	926.33	3253585.32	1301695.54	40°09'28.7568"N	104°35'33.7812"W
Facility Reference Pt			3252659.03	1301719.60	40°09'29.0880"N	104°35'45.7080"W
Field Reference Pt			3000000.00	4454105.15	48°46'34.3150"N	105°30'0.0000"W

WELLPATH DATUM			
Calculation method	Minimum Curvature	(4884'GL+30'KB@4914'RKB) (RKB) to Facility Vertical Datum	4914.00ft
Horizontal Reference Pt	Slot	(4884'GL+30'KB@4914'RKB) (RKB) to Mean Sea Level	4914.00ft
Vertical Reference Pt	(4884'GL+30'KB@4914'RKB) (RKB)	(4884'GL+30'KB@4914'RKB) (RKB) to Mud Line at Slot (SLOT#19 PIONEER Y18-725 (726'FNL & 2239'FEL,SEC.07))	4914.00ft
MD Reference Pt	(4884'GL+30'KB@4914'RKB) (RKB)		
Field Vertical Reference	Mean Sea Level		

POSITIONAL UNCERTAINTY CALCULATION SETTINGS					
Ellipse Confidence Limit	3.50 Std Dev	Ellipse Start MD	30.00ft	Surface Position Uncertainty	included
Declination	7.73° East of TN	Dip Angle	66.45°	Mag Field Strength	51798 nT
Slot Surface Uncertainty @1SD		Horizontal	0.100ft	Vertical	1.000ft
Facility Surface Uncertainty @1SD		Horizontal	8.200ft	Vertical	3.000ft
Positional Uncertainty values in the WELLPATH DATA table are the projection of the ellipsoid of uncertainty onto the vertical and horizontal planes					



Closest Approach Clearance Summary Report

PIONEER Y18-725 (REV-1.0) PWP - SPE WPTS Stop Drilling HSE Risk (2017)

Page 2 of 4



REFERENCE WELLPATH IDENTIFICATION			
Operator	NOBLE ENERGY, INC	Well	PIONEER Y18-725
Field	WELD COUNTY (NOBLE NAD 83 GRID)	API/Legal	
Facility	SEC.07-T02N-R64W	Wellbore	PIONEER Y18-725 PWB
Slot	SLOT#19 PIONEER Y18-725 (726'FNL & 2239'FEL,SEC.07)		

PROXIMITY-SCAN RULE			
Rule Name	SPE WPTS Stop Drilling HSE Risk (2017)	Rule Based On	Ratio
Plane of Rule	Closest Approach	Threshold Value	1.00
Include Casing & Hole Size	yes	Apply Cone of Safety	no

HOLE & CASING SECTIONS - Ref Wellbore: PIONEER Y18-725 PWB Ref Wellpath: PIONEER Y18-725 (REV-1.0) PWP									
String/Diameter	Start MD [ft]	End MD [ft]	Interval [ft]	Start TVD [ft]	End TVD [ft]	Start N/S [ft]	Start E/W [ft]	End N/S [ft]	End E/W [ft]
9.625in Casing Surface	30.00	1950.00	1920.00	30.00	1950.00	0.00	0.00	0.00	0.00

SURVEY PROGRAM - Ref Wellbore: PIONEER Y18-725 PWB Ref Wellpath: PIONEER Y18-725 (REV-1.0) PWP				
Start MD [ft]	End MD [ft]	Positional Uncertainty Model	Log Name/Comment	Wellbore
30.00	1950.00	Gyrodata 2015 - GC+DROP+COND		PIONEER Y18-725 PWB
1950.00	17867.84	OWSG MWD rev2 (MS+IFR1)		PIONEER Y18-725 PWB



Closest Approach Clearance Summary Report

PIONEER Y18-725 (REV-1.0) PWP - SPE WPTS Stop Drilling HSE Risk (2017)

Page 3 of 4



REFERENCE WELLPATH IDENTIFICATION			
Operator	NOBLE ENERGY, INC	Well	PIONEER Y18-725
Field	WELD COUNTY (NOBLE NAD 83 GRID)	API/Legal	
Facility	SEC.07-T02N-R64W	Wellbore	PIONEER Y18-725 PWB
Slot	SLOT#19 PIONEER Y18-725 (726'FNL & 2239'FEL,SEC.07)		

CALCULATION RANGE & CUTOFF		
From: 30.00ft MD	To: 17834.42ft MD	C-C Cutoff: (none)

OFFSET WELL CLEARANCE SUMMARY (32 Offset Wellpaths selected) Ratios are calculated in Closest Approach plane												
Offset Facility	Offset Slot	Offset Well	Offset Wellbore	Offset Wellpath	Wellbore Status	C-C Clearance Distance			Rule Separation Ratio			
						Ref MD [ft]	Min C-C Clear Dist [ft]	Diverging from MD [ft]	Ref MD of Min Ratio [ft]	Min Ratio	Min Ratio Dvrg from [ft]	Rule Status
Y Section 18	(Lyle V Cooksey Gas Unit 1 (PR))	Lyle V Cooksey Gas Unit 1 (PR)	Wellbore #1	Wellbore #1\Gyro Surveys	Drilling	14498.19	80.75	14498.19	14474.04	0.37	14474.04	FAIL
SEC.07-T02N-R64W	SLOT#20 PIONEER Y18-730 (703'FNL & 2239'FEL,SEC.07)	Pioneer Y18-730	Pioneer Y18-730 PWB	PIONEER Y18-730 (REV-1.0) PWP	Planned	2392.69	16.26	8230.00	2407.38	0.61	17834.42	FAIL
SEC.07-T02N-R64W	SLOT#18 PIONEER Y18-715 (748'FNL & 2239'FEL,SEC.07)	Pioneer Y18-715	Pioneer Y18-715 PWB	PIONEER Y18-715 (REV-1.0) PWP	Planned	30.00	22.59	4230.00	2067.91	1.01	17834.42	WARN
SEC.07-T02N-R64W	SLOT#07 PIONEER D31-725 (707'FNL & 2097'FEL, SEC.07)	PIONEER D31-725	PIONEER D31-725 AWB	PIONEER D31-725 AWP	Drilling	7561.03	59.51	7561.03	7554.49	1.05	7554.49	WARN
SEC.07-T02N-R64W	SLOT#21 PIONEER Y18-735 (681'FNL & 2240'FEL,SEC.07)	Pioneer Y18-735	Pioneer Y18-735 PWB	Pioneer Y18-735 (REV-1.0) PWP	Planned	2461.59	36.77	8314.63	2478.81	1.79	17834.42	PASS
Y Section 18	(HSR Harkis 15-18 (PR))	HSR Harkis 15-18 (PR)	Wellbore #1	Wellbore #1\As-Drilled	Drilling	16716.12	508.91	16716.12	16827.64	2.45	16827.64	PASS
SEC.07-T02N-R64W	SLOT#05 PIONEER D31-744 (706'FNL & 2142'FEL, SEC.07)	PIONEER D31-744	PIONEER D31-744 AWB	PIONEER D31-744 AWP	Drilling	2740.53	48.77	7920.90	2747.50	2.49	7130.00	PASS
SEC.07-T02N-R64W	SLOT#22 PIONEER Y18-744 (658'FNL & 2240'FEL,SEC.07)	Pioneer Y18-744	Pioneer Y18-744 PWB	Pioneer Y18-744 (REV-1.0) PWP	Planned	2439.96	58.19	8314.63	2455.86	2.96	17834.42	PASS
SEC.07-T02N-R64W	SLOT#16 Pioneer USX Y07-08D (PR)	Pioneer USX Y07-08D (PR)	Pioneer USX Y07-08D (PR) AWB	Pioneer USX Y07-08D (PR) AWP	Drilling	9593.79	299.81	9593.79	9606.33	3.29	9606.33	PASS
SEC.07-T02N-R64W	SLOT#06 PIONEER D31-735 (706'FNL & 2219'FEL, SEC.07)	PIONEER D31-735	PIONEER D31-735 AWB	PIONEER D31-735 AWP	Drilling	3014.25	78.72	7330.00	3042.17	3.86	7330.00	PASS
SEC.07-T02N-R64W	SLOT#14 Perkins USX Y 7-17 (SI)	Perkins USX Y 7-17 (SI)	Perkins USX Y 7-17 (SI) AWB	Perkins USX Y 7-17 (SI) AWP	Drilling	8804.93	276.30	8804.93	8794.53	5.83	8794.53	PASS
SEC.07-T02N-R64W	SLOT#11 HP Y07-09 (PR)	HP Y07-09 (PR)	HP Y07-09 (PR) AWB	HP Y07-09 (PR) AWP	Drilling	10804.72	391.68	10804.72	10849.55	6.16	10849.55	PASS
SEC.07-T02N-R64W	SLOT#13 Perkins 31-7 (SI)	Perkins 31-7 (SI)	Perkins 31-7 (SI) AWB	Perkins 31-7 (SI) AWP	Drilling	3267.46	138.94	8230.00	3310.34	7.19	8130.00	PASS
SEC.07-T02N-R64W	SLOT#04 PIONEER D31-716 (707'FNL & 2074'FEL, SEC.07)	PIONEER D31-716	PIONEER D31-716 AWB	PIONEER D31-716 AWP	Drilling	2390.48	157.13	7830.00	2453.55	8.61	7830.00	PASS
SEC.07-T02N-R64W	SLOT#28 UPRC 7-10Q (PR)	UPRC 7-10Q (PR)	UPRC 7-10Q (PR) AWB	UPRC 7-10Q (PR) AWP	Drilling	11382.39	605.50	11382.39	11373.22	8.82	11373.22	PASS
SEC.07-T02N-R64W	SLOT#23 PIONEER Y18-756 (639'FNL & 2089'FWL,SEC.07)	Pioneer Y18-756	Pioneer Y18-756 PWB	PIONEER Y18-756 (REV-1.0) PWP	Planned	30.00	765.72	8314.63	17834.42	8.87	17834.42	PASS
SEC.07-T02N-R64W	SLOT#24 PIONEER Y18-766 (661'FNL & 2088'FWL,SEC.07)	Pioneer Y18-766	Pioneer Y18-766 PWB	Pioneer Y18-766 (REV-1.0) PWP	Planned	30.00	763.82	8314.63	17834.42	11.84	17834.42	PASS
SEC.07-T02N-R64W	SLOT#25 PIONEER Y18-770 (684'FNL & 2088'FWL,SEC.07)	PIONEER Y18-770	PIONEER Y18-770 PWB	PIONEER Y18-770 (REV-1.0) PWP	Planned	30.00	762.86	8314.63	17834.42	13.41	17834.42	PASS
SEC.07-T02N-R64W	SLOT#26 PIONEER Y18-775 (706'FNL & 2088'FWL,SEC.07)	Pioneer Y18-775	Pioneer Y18-775 PWB	PIONEER Y18-775 (REV-1.0) PWP	Planned	30.00	762.56	8314.63	17834.42	14.80	17834.42	PASS
Y Section 18	(Charles R Milliken Unit 1 (PR))	Charles R Milliken Unit 1 (PR)	Wellbore #1	Wellbore #1\Gyro Surveys	Drilling	16567.48	3116.77	16567.48	17449.42	15.68	17449.42	PASS
SEC.07-T02N-R64W	SLOT#10 HP Farms Y 7-15JI (PR)	HP Farms Y 7-15JI (PR)	HP Farms Y 7-15JI (PR) AWB	HP Farms Y 7-15JI (PR) AWP	Drilling	12120.40	1299.74	12120.40	12192.68	16.74	12192.68	PASS
SEC.07-T02N-R64W	SLOT#12 HP Y07-10D (PA)	HP Y07-10D (PA)	HP Y07-10D (PA) AWB	HP Y07-10D (PA) AWP	Drilling	10711.42	1124.61	10711.42	10756.90	17.45	10756.90	PASS
SEC.07-T02N-R64W	SLOT#27 PIONEER Y18-785 (729'FNL & 2088'FWL,SEC.07)	Pioneer Y18-785	Pioneer Y18-785 PWB	PIONEER Y18-785 (REV-1.0) PWP_AC	Planned	30.00	762.93	2050.00	17834.42	17.79	17834.42	PASS
SEC.07-T02N-R64W	SLOT#17 Pioneer Y07-07D (PA)	Pioneer Y07-07D (PA)	Pioneer Y07-07D (PA) AWB	Pioneer Y07-07D (PA) AWP	Drilling	9394.29	996.36	9394.29	9469.84	18.54	17630.00	PASS
Y Section 18	(ADA Harkins Unit A1 (PA))	ADA Harkins Unit A1 (PA)	Wellbore #1	Wellbore #1\Gyro Surveys	Drilling	14098.33	2930.21	14098.33	14313.73	24.14	14313.73	PASS



Closest Approach Clearance Summary Report

PIONEER Y18-725 (REV-1.0) PWP - SPE WPTS Stop Drilling HSE Risk (2017)

Page 4 of 4



REFERENCE WELLPATH IDENTIFICATION			
Operator	NOBLE ENERGY, INC	Well	PIONEER Y18-725
Field	WELD COUNTY (NOBLE NAD 83 GRID)	API/Legal	
Facility	SEC.07-T02N-R64W	Wellbore	PIONEER Y18-725 PWB
Slot	SLOT#19 PIONEER Y18-725 (726'FNL & 2239'FEL,SEC.07)		

CALCULATION RANGE & CUTOFF		
From: 30.00ft MD	To: 17834.42ft MD	C-C Cutoff: (none)

OFFSET WELL CLEARANCE SUMMARY (32 Offset Wellpaths selected) Ratios are calculated in Closest Approach plane												
Offset Facility	Offset Slot	Offset Well	Offset Wellbore	Offset Wellpath	Wellbore Status	C-C Clearance Distance			Rule Separation Ratio			
						Ref MD [ft]	Min C-C Clear Dist [ft]	Diverging from MD [ft]	Ref MD of Min Ratio [ft]	Min Ratio	Min Ratio Dvrg from [ft]	Rule Status
SEC.07-T02N-R64W	SLOT#15 Pioneer 22-7 (SI)	Pioneer 22-7 (SI)	Pioneer 22-7 (SI) AWB	Pioneer 22-7 (SI) AWP	Drilling	2091.42	1672.19	9730.00	10044.13	37.98	10044.13	PASS
SEC.07-T02N-R64W	SLOT#03 PIONEER D31-756 (681'FNL & 1991'FWL,SEC.07)	PIONEER D31-756	PIONEER D31-756 AWB	PIONEER D31-756 AWP	Drilling	1949.02	858.07	7930.00	7030.00	38.87	7030.00	PASS
SEC.07-T02N-R64W	SLOT#29 UPRR 53 PAN AM E 1 (PA)	UPRR 53 PAN AM E 1 (PA)	UPRR 53 PAN AM E 1 (PA) AWB	UPRR 53 PAN AM E 1 (PA) AWP	Drilling	11464.83	3053.88	11464.83	12191.14	41.56	12191.14	PASS
SEC.07-T02N-R64W	SLOT#02 PIONEER D31-775 (680'FNL & 1946'FWL, SEC.07)	PIONEER D31-775	PIONEER D31-775 AWB	PIONEER D31-775 AWP	Drilling	1986.93	897.23	8130.00	2205.86	50.47	7920.90	PASS
SEC.07-T02N-R64W	SLOT#01 PIONEER D31-785 (680'FNL & 1923'FWL, SEC.07)	PIONEER D31-785	PIONEER D31-785 AWB	PIONEER D31-785 AWP	Drilling	30.00	926.66	8130.00	2199.79	52.30	9330.00	PASS
SEC.07-T02N-R64W	SLOT#08 Harkis 1-7 (PA)	Harkis 1-7 (PA)	Harkis 1-7 (PA) AWB	Harkis 1-7 (PA) AWP	Drilling	1147.34	1981.43	8930.00	9792.44	62.16	9792.44	PASS
SEC.07-T02N-R64W	SLOT#09 Harkis 11-7 (PA)	Harkis 11-7 (PA)	Harkis 11-7 (PA) AWB	Harkis 11-7 (PA) AWP	Drilling	2017.55	2208.92	8230.00	9164.36	75.45	9164.36	PASS