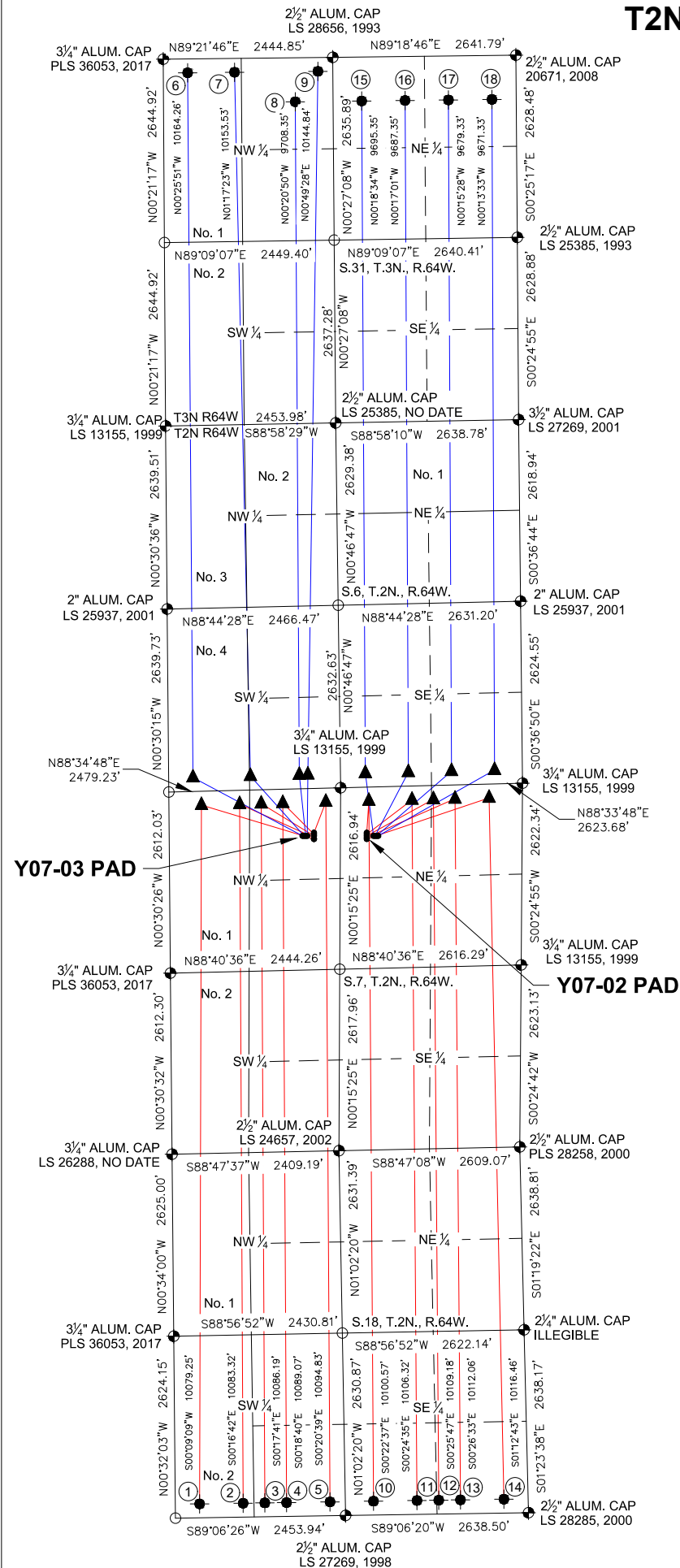
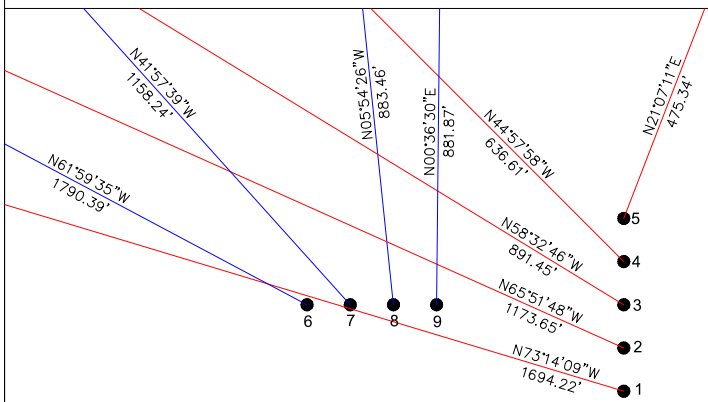


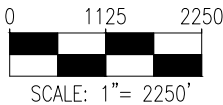
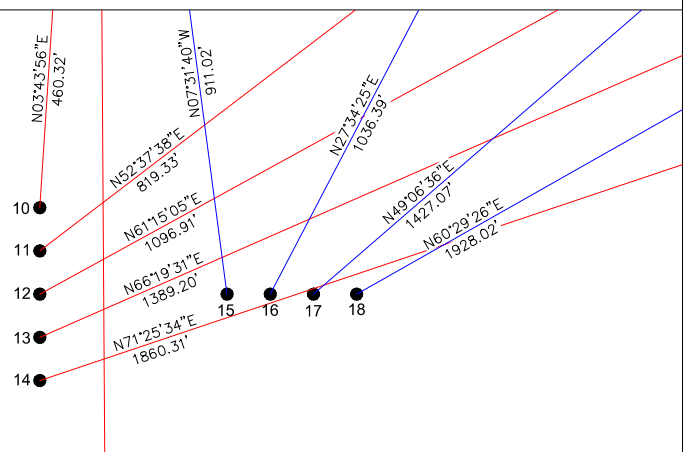
Y07-03 PAD & Y07-02 PAD
MULTI-WELL LOCATION PLAT / MULTI-WELL PLAN
T2N R64W SECTION 7



PROPOSED WELLBORE DIRECTION DATA
Y07-03 PAD
SLOTS 1-9



PROPOSED WELLBORE DIRECTION DATA
Y07-02 PAD
SLOTS 10-18



LEGEND


- = FOUND MONUMENT
- = CALCULATED POSITION
- = PROPOSED WELL
- ◆ = EXISTING WELL
- ▲ = TOP OF PRODUCTIVE ZONE
- = BOTTOM HOLE

Notes:

- 1) All bearings are Grid Bearings of the Colorado State Plane Coordinate System, North Zone, North American Datum 1983/2011. The lineal dimensions as shown herein are grid distances based upon the "U.S. Survey Foot." To get ground distances multiply shown distance by 1.000271.
- 2) Distances are measured at 90° from section line of the Sixth Principal Meridian, County of Weld, State of Colorado.
- 3) Ground elevations are based on an observed GPS elevation (NAVD 1988 DATUM).
- 4) Surface use: "RANGELAND"
- 5) Instrument Operator: Dominick Davis
- 6) This map does not represent a boundary survey.

DISCLAIMER:
THIS PLOT DOES NOT REPRESENT A MONUMENTED LAND SURVEY AND SHOULD NOT BE RELIED UPON TO DETERMINE BOUNDARY LINES, PROPERTY OWNERSHIP OR OTHER PROPERTY INTERESTS. PARCEL LINES, IF DEPICTED HAVE NOT BEEN FIELD VERIFIED AND MAY BE BASED UPON PUBLICLY AVAILABLE DATA THAT ALSO HAS NOT BEEN INDEPENDENTLY VERIFIED.

SURFACE HOLE LOCATION								TOP OF PRODUCTIVE ZONE		BOTTOM HOLE LOCATION		
SLOT	WELL NAME	LATITUDE	LONGITUDE	FOOTAGE		QTR-QTR	ELEV.	PDOP	FOOTAGE		FOOTAGE	
1	PIONEER Y18-785	40.15795°N	104.59545°W	729' FNL	2088' FWL	NENW	4886'	1.4	200' FNL	470' FWL	200' FSL	350' FWL
2	PIONEER Y18-775	40.15801°N	104.59545°W	706' FNL	2088' FWL	NENW	4885'	1.3	200' FNL	1021' FWL	200' FSL	977' FWL
3	PIONEER Y18-770	40.15807°N	104.59544°W	684' FNL	2088' FWL	NENW	4884'	1.5	200' FNL	1332' FWL	200' FSL	1291' FWL
4	PIONEER Y18-766	40.15813°N	104.59544°W	661' FNL	2088' FWL	NENW	4884'	1.3	200' FNL	1643' FWL	200' FSL	1604' FWL
5	PIONEER Y18-756	40.15820°N	104.59544°W	639' FNL	2089' FWL	NENW	4883'	1.4	200' FNL	2264' FWL	200' FSL	2231' FWL
6	PIONEER D31-785	40.15808°N	104.59604°W	680' FNL	1923' FWL	NENW	4887'	1.7	200' FSL	350' FWL	200' FNL	350' FWL
7	PIONEER D31-775	40.15808°N	104.59595°W	680' FNL	1946' FWL	NENW	4887'	1.7	200' FSL	1179' FWL	200' FNL	1027' FWL
8	PIONEER D31-761	40.15808°N	104.59587°W	681' FNL	1968' FWL	NENW	4887'	1.4	200' FSL	1885' FWL	635' FNL	1900' FWL
9	PIONEER D31-756	40.15808°N	104.59579°W	681' FNL	1991' FWL	NENW	4886'	1.7	200' FSL	2008' FWL	200' FNL	2230' FWL
10	PIONEER Y18-744	40.15817°N	104.59272°W	658' FNL	2240' FEL	NWNE	4885'	1.7	200' FNL	2213' FEL	200' FSL	2231' FEL
11	PIONEER Y18-735	40.15811°N	104.59272°W	681' FNL	2240' FEL	NWNE	4885'	1.7	200' FNL	1592' FEL	200' FSL	1604' FEL
12	PIONEER Y18-730	40.15805°N	104.59272°W	703' FNL	2239' FEL	NWNE	4884'	1.5	200' FNL	1282' FEL	200' FSL	1290' FEL
13	PIONEER Y18-725	40.15799°N	104.59272°W	726' FNL	2239' FEL	NWNE	4884'	1.6	200' FNL	971' FEL	200' FSL	977' FEL
14	PIONEER Y18-715	40.15793°N	104.59272°W	748' FNL	2139' FEL	NWNE	4883'	1.6	200' FNL	480' FEL	200' FSL	350' FEL
15	PIONEER D31-744	40.15805°N	104.59237°W	706' FNL	2142' FEL	NWNE	4881'	1.6	200' FSL	2265' FEL	635' FNL	2230' FEL
16	PIONEER D31-735	40.15805°N	104.59229°W	706' FNL	2119' FEL	NWNE	4881'	1.6	200' FSL	1643' FEL	635' FNL	1603' FEL
17	PIONEER D31-725	40.15805°N	104.59221°W	707' FNL	2097' FEL	NWNE	4881'	1.6	200' FSL	1022' FEL	635' FNL	977' FEL
18	PIONEER D31-716	40.15805°N	104.59213°W	707' FNL	2074' FEL	NWNE	4880'	1.4	200' FSL	400' FEL	635' FNL	350' FEL



8620 Wolff Court
Westminster, CO 80031
(303) 928-7128
www.ascentgeomatics.com

FIELD DATE:
09-22-18

DRAWN BY:
IJM

DRAWING DATE:
06-02-22

CHECKED BY:
CSG

SURFACE LOCATION:
SEC. 7, T2N, R64W, 6TH P.M.
WELD COUNTY, COLORADO

PUBLICLY AVAILABLE DATA SOURCES HAVE NOT
BEEN INDEPENDENTLY VERIFIED BY ASCENT.

