

NOBLE ENERGY, INC



Location: COLORADO Slot: SLOT#22 PIONEER Y18-744 (658°FNL & 2240°FEL, SEC.07)

Field: WELD COUNTY (NOBLE NAD 83 GRID) Well: Pioneer Y18-744

Facility: SEC.07-T02N-R64W Wellbore: Pioneer Y18-744 PWB

Plot reference wellpath is Pioneer Y18-744 (REV-1.0) PWP

Grid System: NAD83 / Lambert Colorado SP, Northern Zone (501), US feet

True vertical depths are referenced to (4885GL+30KB@4915RKB) (RKB)

North Reference: Grid north

Reference wellpath measured depths are referenced to (4885GL+30KB@4915RKB) (RKB)

Scale: True distance

(4885GL+30KB@4915RKB) (RKB) to Mean Sea Level: 4915 feet

Coordinates are in feet referenced to Slot

Mean Sea Level to Mud line (At Slot: SLOT#22 PIONEER Y18-744 (658°FNL & 2240°FEL, SEC.07)): 0 feet

Depths are in feet

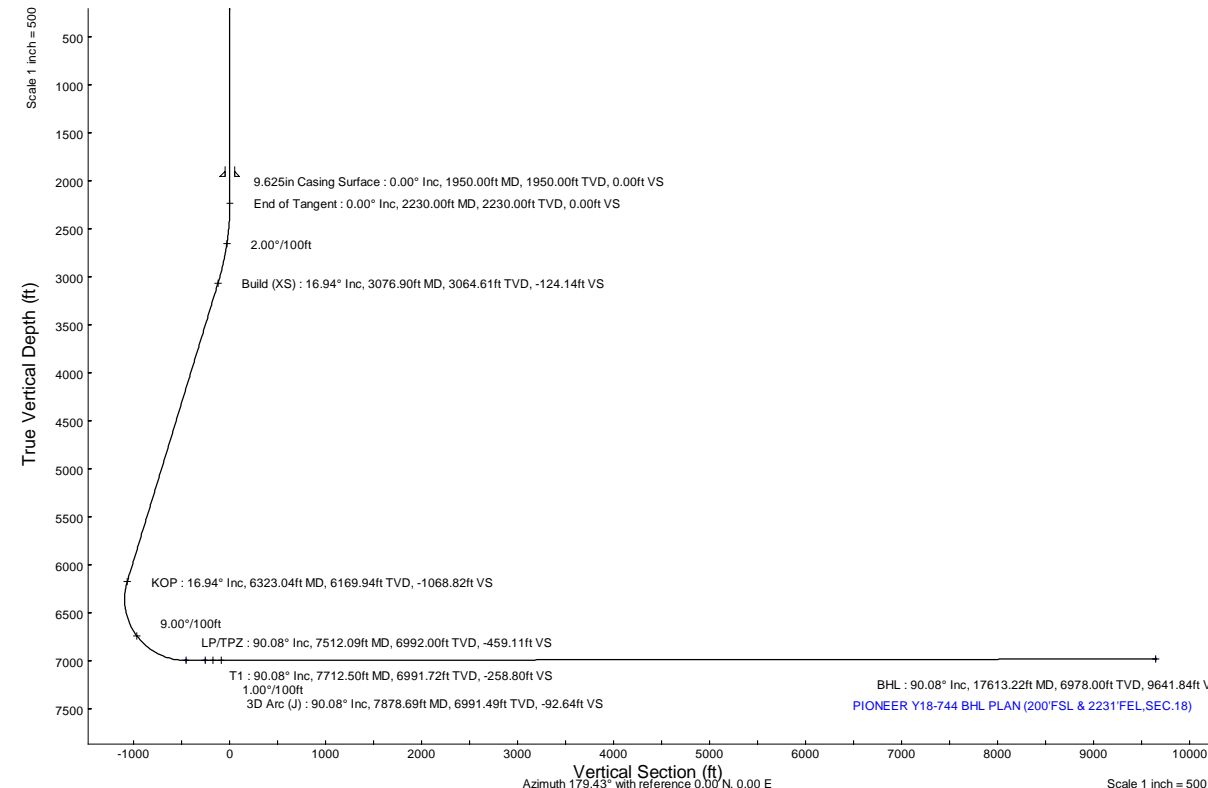
Offset wellpath MDs are referenced to each path's default MD datum

Created by: gualaner on 2022-05-23; Database: WA_Denver

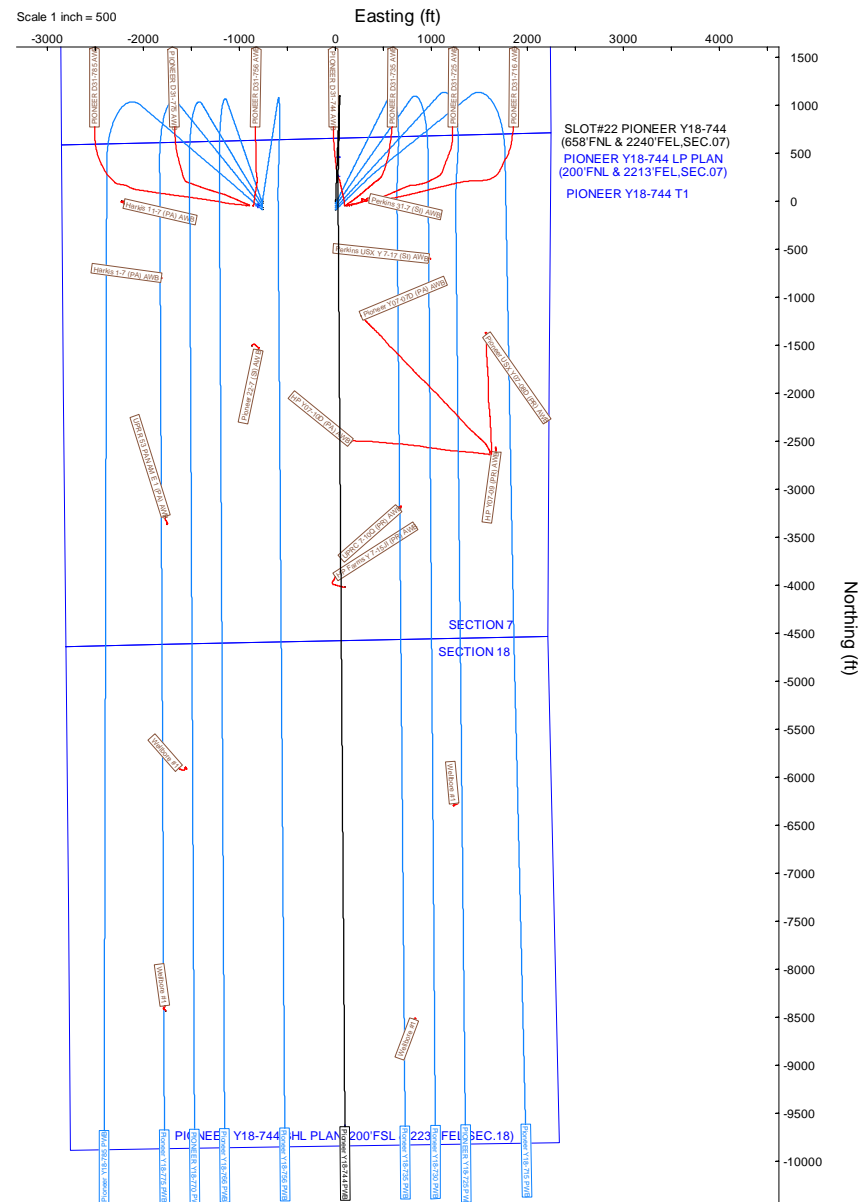
Location Information						
Facility Name			Grid East (US ft)	Grid North (US ft)	Latitude	Longitude
SEC.07-T02N-R64W			3252659.032	1301719.599	40°09'29.0880"N	104°35'45.7080"W
Slot	Local N (ft)	Local E (ft)	Grid East (US ft)	Grid North (US ft)	Latitude	Longitude
SLOT#22 PIONEER Y18-744 (658°FNL & 2240°FEL, SEC.07)	43.34	928.20	3253685.194	1301762.938	40°09'29.4228"N	104°35'33.7740"W
(4885GL+30KB@4915RKB) (RKB) to Mud line (At Slot: SLOT#22 PIONEER Y18-744 (658°FNL & 2240°FEL, SEC.07))					4915ft	
Mean Sea Level to Mud line (At Slot: SLOT#22 PIONEER Y18-744 (658°FNL & 2240°FEL, SEC.07))					0ft	
(4885GL+30KB@4915RKB) (RKB) to Mean Sea Level					4915ft	

Targets						
Name	MD (ft)	TVD (ft)	Local N (ft)	Local E (ft)	Grid East (US ft)	Grid North (US ft)
PIONEER Y18-785 SECTION 18	N/A	0.00	-45.79	-808.77	3252776.45	1301717.15
PIONEER Y18-785 SECTION 7	N/A	0.00	-45.79	-808.77	3252776.45	1301717.15
PIONEER Y18-744 BHL PLAN (200°FSL & 2231°FEL, SEC.18)	17613.22	6978.00	-9641.36	96.46	3253681.65	1292122.00
PIONEER Y18-744 T1	7712.50	6991.72	259.07	25.68	3253610.87	1302022.00
PIONEER Y18-744 LP PLAN (200°FNL & 2213°FEL, SEC.07)	7512.09	6992.00	459.43	30.01	3253615.20	1302222.35
SECTION LINES - SEC.06-T02N-R64W	N/A	7998.00	5866.85	-2903.16	3250682.16	1307629.53
						40°10'27.6881"N
						104°36'10.3986"W

Bottom Hole Location									
MD (ft)	Inc (°)	Az (°)	TVD (ft)	Local N (ft)	Local E (ft)	Grid East (US ft)	Grid North (US ft)	Latitude	Longitude
17613.22	90.079	179.576	6978.00	-9641.36	96.46	3253681.65	1292122.00	40°07'54.1414"N	104°35'33.8022"W



Well Profile Data								
Design Comment	MD (ft)	Inc (°)	Az (°)	TVD (ft)	Local N (ft)	Local E (ft)	DLS (°/100ft)	VS (ft)
SHL	30.00	0.000	2.109	30.00	0.00	0.00	0.00	0.00
End of Tangent	2230.00	0.000	2.109	2230.00	0.00	0.00	0.00	0.00
Build (XS)	3076.90	16.938	2.109	3064.61	124.19	4.57	2.00	-124.14
KOP	6323.04	16.938	2.109	6169.94	1069.26	39.38	0.00	-1068.82
LP/TPZ	7512.09	90.079	181.238	6992.00	459.43	30.01	9.00	-459.11
T1	7712.50	90.079	181.238	6991.72	259.07	25.68	0.00	-258.80
3D Arc (J)	7878.69	90.079	179.576	6991.49	92.89	24.50	1.00	-92.64
BHL	17613.22	90.079	179.576	6978.00	-9641.36	96.46	0.00	9641.84





Planned Wellpath Report
Pioneer Y18-744 (REV-1.0) PWP
Page 1 of 7



REFERENCE WELLPATH IDENTIFICATION			
Operator	NOBLE ENERGY, INC	Well	Pioneer Y18-744
Field	WELD COUNTY (NOBLE NAD 83 GRID)	API/Legal	
Facility	SEC.07-T02N-R64W	Wellbore	Pioneer Y18-744 PWB
Slot	SLOT#22 PIONEER Y18-744 (658'FNL & 2240'FEL,SEC.07)		

REPORT SETUP INFORMATION			
Projection System	NAD83 / Lambert Colorado SP, Northern Zone (501), US feet	Software System	WellArchitect® 6.0
North Reference	Grid	User	Guenaler
Scale	0.999958	Report Generated	5/23/2022 at 7:44:22 AM
Convergence at slot	0.59° East	Database	WellArchitectDB

WELLPATH LOCATION						
	Local coordinates		Grid coordinates		Geographic coordinates	
	North[ft]	East[ft]	Easting[US ft]	Northing[US ft]	Latitude	Longitude
Slot Location	43.34	926.20	3253585.19	1301762.94	40°09'29.4228"N	104°35'33.7740"W
Facility Reference Pt			3252659.03	1301719.60	40°09'29.0880"N	104°35'45.7080"W
Field Reference Pt			3000000.00	4454105.15	48°46'34.3150"N	105°30'0.0000"W

WELLPATH DATUM			
Calculation method	Minimum curvature	(4885'GL+30'KB@4915'RKB) (RKB) to Facility Vertical Datum	4915.00ft
Horizontal Reference Pt	Slot	(4885'GL+30'KB@4915'RKB) (RKB) to Mean Sea Level	4915.00ft
Vertical Reference Pt	(4885'GL+30'KB@4915'RKB) (RKB)	(4885'GL+30'KB@4915'RKB) (RKB) to Mud Line at Slot (SLOT#22 PIONEER Y18-744 (658'FNL & 2240'FEL,SEC.07))	4915.00ft
MD Reference Pt	(4885'GL+30'KB@4915'RKB) (RKB)	Section Origin	N 0.00, E 0.00 ft
Field Vertical Reference	Mean Sea Level	Section Azimuth	179.43°



Planned Wellpath Report
Pioneer Y18-744 (REV-1.0) PWP
Page 2 of 7



REFERENCE WELLPATH IDENTIFICATION			
Operator	NOBLE ENERGY, INC	Well	Pioneer Y18-744
Field	WELD COUNTY (NOBLE NAD 83 GRID)	API/Legal	
Facility	SEC.07-T02N-R64W	Wellbore	Pioneer Y18-744 PWB
Slot	SLOT#22 PIONEER Y18-744 (658'FNL & 2240'FEL,SEC.07)		

WELLPATH DATA (183 stations) † = interpolated, ‡ = extrapolated station										
MD [ft]	Inclination [°]	Azimuth [°]	TVD [ft]	Vert Sect [ft]	North [ft]	East [ft]	Latitude	Longitude	DLS [°/100ft]	Comments
0.00†	0.000	2.109	0.00	0.00	0.00	0.00	40°09'29.4228"N	104°35'33.7740"W	0.00	
30.00	0.000	2.109	30.00	0.00	0.00	0.00	40°09'29.4228"N	104°35'33.7740"W	0.00	SHL
130.00†	0.000	2.109	130.00	0.00	0.00	0.00	40°09'29.4228"N	104°35'33.7740"W	0.00	
230.00†	0.000	2.109	230.00	0.00	0.00	0.00	40°09'29.4228"N	104°35'33.7740"W	0.00	
330.00†	0.000	2.109	330.00	0.00	0.00	0.00	40°09'29.4228"N	104°35'33.7740"W	0.00	
430.00†	0.000	2.109	430.00	0.00	0.00	0.00	40°09'29.4228"N	104°35'33.7740"W	0.00	
530.00†	0.000	2.109	530.00	0.00	0.00	0.00	40°09'29.4228"N	104°35'33.7740"W	0.00	
630.00†	0.000	2.109	630.00	0.00	0.00	0.00	40°09'29.4228"N	104°35'33.7740"W	0.00	
730.00†	0.000	2.109	730.00	0.00	0.00	0.00	40°09'29.4228"N	104°35'33.7740"W	0.00	
830.00†	0.000	2.109	830.00	0.00	0.00	0.00	40°09'29.4228"N	104°35'33.7740"W	0.00	
930.00†	0.000	2.109	930.00	0.00	0.00	0.00	40°09'29.4228"N	104°35'33.7740"W	0.00	
1030.00†	0.000	2.109	1030.00	0.00	0.00	0.00	40°09'29.4228"N	104°35'33.7740"W	0.00	
1130.00†	0.000	2.109	1130.00	0.00	0.00	0.00	40°09'29.4228"N	104°35'33.7740"W	0.00	
1230.00†	0.000	2.109	1230.00	0.00	0.00	0.00	40°09'29.4228"N	104°35'33.7740"W	0.00	
1330.00†	0.000	2.109	1330.00	0.00	0.00	0.00	40°09'29.4228"N	104°35'33.7740"W	0.00	
1430.00†	0.000	2.109	1430.00	0.00	0.00	0.00	40°09'29.4228"N	104°35'33.7740"W	0.00	
1530.00†	0.000	2.109	1530.00	0.00	0.00	0.00	40°09'29.4228"N	104°35'33.7740"W	0.00	
1630.00†	0.000	2.109	1630.00	0.00	0.00	0.00	40°09'29.4228"N	104°35'33.7740"W	0.00	
1730.00†	0.000	2.109	1730.00	0.00	0.00	0.00	40°09'29.4228"N	104°35'33.7740"W	0.00	
1830.00†	0.000	2.109	1830.00	0.00	0.00	0.00	40°09'29.4228"N	104°35'33.7740"W	0.00	
1930.00†	0.000	2.109	1930.00	0.00	0.00	0.00	40°09'29.4228"N	104°35'33.7740"W	0.00	
2030.00†	0.000	2.109	2030.00	0.00	0.00	0.00	40°09'29.4228"N	104°35'33.7740"W	0.00	
2130.00†	0.000	2.109	2130.00	0.00	0.00	0.00	40°09'29.4228"N	104°35'33.7740"W	0.00	
2230.00	0.000	2.109	2230.00	0.00	0.00	0.00	40°09'29.4228"N	104°35'33.7740"W	0.00	End of Tangent
2330.00†	2.000	2.109	2329.98	-1.74	1.74	0.06	40°09'29.4400"N	104°35'33.7729"W	2.00	
2430.00†	4.000	2.109	2429.84	-6.97	6.97	0.26	40°09'29.4917"N	104°35'33.7698"W	2.00	
2530.00†	6.000	2.109	2529.45	-15.68	15.68	0.58	40°09'29.5777"N	104°35'33.7645"W	2.00	
2630.00†	8.000	2.109	2628.70	-27.85	27.86	1.03	40°09'29.6980"N	104°35'33.7571"W	2.00	
2730.00†	10.000	2.109	2727.47	-43.47	43.49	1.60	40°09'29.8524"N	104°35'33.7476"W	2.00	
2830.00†	12.000	2.109	2825.62	-62.53	62.56	2.30	40°09'30.0408"N	104°35'33.7361"W	2.00	
2930.00†	14.000	2.109	2923.06	-85.00	85.04	3.13	40°09'30.2628"N	104°35'33.7225"W	2.00	
3030.00†	16.000	2.109	3019.64	-110.86	110.90	4.08	40°09'30.5183"N	104°35'33.7068"W	2.00	
3076.90	16.938	2.109	3064.61	-124.14	124.19	4.57	40°09'30.6495"N	104°35'33.6987"W	2.00	Build (XS)
3130.00†	16.938	2.109	3115.41	-139.59	139.65	5.14	40°09'30.8022"N	104°35'33.6894"W	0.00	
3230.00†	16.938	2.109	3211.08	-168.69	168.76	6.22	40°09'31.0898"N	104°35'33.6717"W	0.00	
3330.00†	16.938	2.109	3306.74	-197.79	197.88	7.29	40°09'31.3774"N	104°35'33.6541"W	0.00	
3430.00†	16.938	2.109	3402.40	-226.89	226.99	8.36	40°09'31.6650"N	104°35'33.6364"W	0.00	
3530.00†	16.938	2.109	3498.06	-256.00	256.10	9.43	40°09'31.9525"N	104°35'33.6188"W	0.00	
3630.00†	16.938	2.109	3593.73	-285.10	285.22	10.50	40°09'32.2401"N	104°35'33.6011"W	0.00	
3730.00†	16.938	2.109	3689.39	-314.20	314.33	11.58	40°09'32.5277"N	104°35'33.5835"W	0.00	
3830.00†	16.938	2.109	3785.05	-343.30	343.44	12.65	40°09'32.8153"N	104°35'33.5658"W	0.00	
3930.00†	16.938	2.109	3880.71	-372.40	372.56	13.72	40°09'33.1029"N	104°35'33.5482"W	0.00	
4030.00†	16.938	2.109	3976.37	-401.50	401.67	14.79	40°09'33.3904"N	104°35'33.5305"W	0.00	
4130.00†	16.938	2.109	4072.04	-430.61	430.79	15.87	40°09'33.6780"N	104°35'33.5129"W	0.00	
4230.00†	16.938	2.109	4167.70	-459.71	459.90	16.94	40°09'33.9656"N	104°35'33.4953"W	0.00	



Planned Wellpath Report

Pioneer Y18-744 (REV-1.0) PWP

Page 3 of 7



REFERENCE WELLPATH IDENTIFICATION			
Operator	NOBLE ENERGY, INC	Well	Pioneer Y18-744
Field	WELD COUNTY (NOBLE NAD 83 GRID)	API/Legal	
Facility	SEC.07-T02N-R64W	Wellbore	Pioneer Y18-744 PWB
Slot	SLOT#22 PIONEER Y18-744 (658'FNL & 2240'FEL,SEC.07)		

WELLPATH DATA (183 stations) † = interpolated, ‡ = extrapolated station										
MD [ft]	Inclination [°]	Azimuth [°]	TVD [ft]	Vert Sect [ft]	North [ft]	East [ft]	Latitude	Longitude	DLS [°/100ft]	Comments
4330.00†	16.938	2.109	4263.36	-488.81	489.01	18.01	40°09'34.2532"N	104°35'33.4776"W	0.00	
4430.00†	16.938	2.109	4359.02	-517.91	518.13	19.08	40°09'34.5408"N	104°35'33.4600"W	0.00	
4530.00†	16.938	2.109	4454.68	-547.01	547.24	20.15	40°09'34.8283"N	104°35'33.4423"W	0.00	
4630.00†	16.938	2.109	4550.35	-576.11	576.36	21.23	40°09'35.1159"N	104°35'33.4247"W	0.00	
4730.00†	16.938	2.109	4646.01	-605.22	605.47	22.30	40°09'35.4035"N	104°35'33.4070"W	0.00	
4830.00†	16.938	2.109	4741.67	-634.32	634.58	23.37	40°09'35.6911"N	104°35'33.3894"W	0.00	
4930.00†	16.938	2.109	4837.33	-663.42	663.70	24.44	40°09'35.9787"N	104°35'33.3717"W	0.00	
5030.00†	16.938	2.109	4932.99	-692.52	692.81	25.52	40°09'36.2662"N	104°35'33.3541"W	0.00	
5130.00†	16.938	2.109	5028.66	-721.62	721.92	26.59	40°09'36.5538"N	104°35'33.3364"W	0.00	
5230.00†	16.938	2.109	5124.32	-750.72	751.04	27.66	40°09'36.8414"N	104°35'33.3188"W	0.00	
5330.00†	16.938	2.109	5219.98	-779.83	780.15	28.73	40°09'37.1290"N	104°35'33.3011"W	0.00	
5430.00†	16.938	2.109	5315.64	-808.93	809.27	29.80	40°09'37.4166"N	104°35'33.2835"W	0.00	
5530.00†	16.938	2.109	5411.31	-838.03	838.38	30.88	40°09'37.7042"N	104°35'33.2659"W	0.00	
5630.00†	16.938	2.109	5506.97	-867.13	867.49	31.95	40°09'37.9917"N	104°35'33.2482"W	0.00	
5730.00†	16.938	2.109	5602.63	-896.23	896.61	33.02	40°09'38.2793"N	104°35'33.2306"W	0.00	
5830.00†	16.938	2.109	5698.29	-925.33	925.72	34.09	40°09'38.5669"N	104°35'33.2129"W	0.00	
5930.00†	16.938	2.109	5793.95	-954.44	954.83	35.17	40°09'38.8545"N	104°35'33.1953"W	0.00	
6030.00†	16.938	2.109	5889.62	-983.54	983.95	36.24	40°09'39.1421"N	104°35'33.1776"W	0.00	
6130.00†	16.938	2.109	5985.28	-1012.64	1013.06	37.31	40°09'39.4296"N	104°35'33.1600"W	0.00	
6230.00†	16.938	2.109	6080.94	-1041.74	1042.18	38.38	40°09'39.7172"N	104°35'33.1423"W	0.00	
6323.04	16.938	2.109	6169.94	-1068.82	1069.26	39.38	40°09'39.9848"N	104°35'33.1259"W	0.00	KOP
6330.00†	16.311	2.145	6176.61	-1070.81	1071.25	39.45	40°09'40.0044"N	104°35'33.1247"W	9.00	
6430.00†	7.314	3.305	6274.39	-1091.23	1091.68	40.35	40°09'40.2062"N	104°35'33.1105"W	9.00	
6530.00†	1.711	172.322	6374.17	-1096.10	1096.57	40.92	40°09'40.2544"N	104°35'33.1025"W	9.00	
6630.00†	10.694	179.833	6473.48	-1085.32	1085.79	41.14	40°09'40.1479"N	104°35'33.1010"W	9.00	
6730.00†	19.692	180.497	6569.89	-1059.14	1059.61	41.02	40°09'39.8892"N	104°35'33.1060"W	9.00	
6830.00†	28.692	180.753	6661.01	-1018.22	1018.67	40.56	40°09'39.4848"N	104°35'33.1174"W	9.00	
6930.00†	37.692	180.895	6744.61	-963.55	963.99	39.77	40°09'38.9445"N	104°35'33.1348"W	9.00	
7030.00†	46.691	180.988	6818.63	-896.48	896.91	38.66	40°09'38.2817"N	104°35'33.1579"W	9.00	
7130.00†	55.691	181.057	6881.23	-818.66	819.08	37.27	40°09'37.5128"N	104°35'33.1861"W	9.00	
7230.00†	64.691	181.113	6930.89	-732.02	732.41	35.62	40°09'36.6566"N	104°35'33.2187"W	9.00	
7330.00†	73.691	181.160	6966.38	-638.68	639.05	33.77	40°09'35.7342"N	104°35'33.2548"W	9.00	
7430.00†	82.691	181.204	6986.83	-540.94	541.29	31.75	40°09'34.7683"N	104°35'33.2937"W	9.00	
7512.09	90.079	181.238	6992.00 ¹	-459.11	459.43	30.01	40°09'33.9597"N	104°35'33.3270"W	9.00	LP/TPZ
7530.00†	90.079	181.238	6991.98	-441.21	441.53	29.62	40°09'33.7828"N	104°35'33.3343"W	0.00	
7630.00†	90.079	181.238	6991.84	-341.26	341.55	27.46	40°09'32.7951"N	104°35'33.3753"W	0.00	
7712.50	90.079	181.238	6991.72 ²	-258.80	259.07	25.68	40°09'31.9802"N	104°35'33.4092"W	0.00	T1
7730.00†	90.079	181.063	6991.70	-241.31	241.58	25.33	40°09'31.8074"N	104°35'33.4160"W	1.00	
7830.00†	90.079	180.063	6991.56	-141.33	141.58	24.34	40°09'30.8194"N	104°35'33.4418"W	1.00	
7878.69	90.079	179.576	6991.49	-92.64	92.89	24.50	40°09'30.3382"N	104°35'33.4463"W	1.00	3D Arc (J)
7930.00†	90.079	179.576	6991.42	-41.33	41.59	24.88	40°09'29.8312"N	104°35'33.4482"W	0.00	
8030.00†	90.079	179.576	6991.28	58.67	-58.41	25.61	40°09'28.8430"N	104°35'33.4518"W	0.00	
8130.00†	90.079	179.576	6991.15	158.66	-158.41	26.35	40°09'27.8548"N	104°35'33.4555"W	0.00	
8230.00†	90.079	179.576	6991.01	258.66	-258.41	27.09	40°09'26.8666"N	104°35'33.4591"W	0.00	
8330.00†	90.079	179.576	6990.87	358.66	-358.40	27.83	40°09'25.8784"N	104°35'33.4628"W	0.00	



Planned Wellpath Report

Pioneer Y18-744 (REV-1.0) PWP

Page 4 of 7



REFERENCE WELLPATH IDENTIFICATION			
Operator	NOBLE ENERGY, INC	Well	Pioneer Y18-744
Field	WELD COUNTY (NOBLE NAD 83 GRID)	API/Legal	
Facility	SEC.07-T02N-R64W	Wellbore	Pioneer Y18-744 PWB
Slot	SLOT#22 PIONEER Y18-744 (658'FNL & 2240'FEL,SEC.07)		

WELLPATH DATA (183 stations) † = interpolated, ‡ = extrapolated station										
MD [ft]	Inclination [°]	Azimuth [°]	TVD [ft]	Vert Sect [ft]	North [ft]	East [ft]	Latitude	Longitude	DLS [°/100ft]	Comments
8430.00†	90.079	179.576	6990.73	458.66	-458.40	28.57	40°09'24.8902"N	104°35'33.4664"W	0.00	
8530.00†	90.079	179.576	6990.59	558.66	-558.40	29.31	40°09'23.9020"N	104°35'33.4701"W	0.00	
8630.00†	90.079	179.576	6990.45	658.66	-658.39	30.05	40°09'22.9138"N	104°35'33.4738"W	0.00	
8730.00†	90.079	179.576	6990.31	758.66	-758.39	30.79	40°09'21.9256"N	104°35'33.4774"W	0.00	
8830.00†	90.079	179.576	6990.18	858.66	-858.39	31.53	40°09'20.9374"N	104°35'33.4811"W	0.00	
8930.00†	90.079	179.576	6990.04	958.66	-958.39	32.27	40°09'19.9492"N	104°35'33.4847"W	0.00	
9030.00†	90.079	179.576	6989.90	1058.66	-1058.38	33.01	40°09'18.9610"N	104°35'33.4884"W	0.00	
9130.00†	90.079	179.576	6989.76	1158.66	-1158.38	33.75	40°09'17.9728"N	104°35'33.4920"W	0.00	
9230.00†	90.079	179.576	6989.62	1258.66	-1258.38	34.49	40°09'16.9846"N	104°35'33.4957"W	0.00	
9330.00†	90.079	179.576	6989.48	1358.66	-1358.38	35.22	40°09'15.9964"N	104°35'33.4994"W	0.00	
9430.00†	90.079	179.576	6989.34	1458.66	-1458.37	35.96	40°09'15.0082"N	104°35'33.5030"W	0.00	
9530.00†	90.079	179.576	6989.20	1558.66	-1558.37	36.70	40°09'14.0200"N	104°35'33.5067"W	0.00	
9630.00†	90.079	179.576	6989.07	1658.66	-1658.37	37.44	40°09'13.0318"N	104°35'33.5103"W	0.00	
9730.00†	90.079	179.576	6988.93	1758.66	-1758.36	38.18	40°09'12.0436"N	104°35'33.5140"W	0.00	
9830.00†	90.079	179.576	6988.79	1858.66	-1858.36	38.92	40°09'11.0554"N	104°35'33.5176"W	0.00	
9930.00†	90.079	179.576	6988.65	1958.66	-1958.36	39.66	40°09'10.0672"N	104°35'33.5213"W	0.00	
10030.00†	90.079	179.576	6988.51	2058.66	-2058.36	40.40	40°09'9.0790"N	104°35'33.5250"W	0.00	
10130.00†	90.079	179.576	6988.37	2158.66	-2158.35	41.14	40°09'8.0908"N	104°35'33.5286"W	0.00	
10230.00†	90.079	179.576	6988.23	2258.66	-2258.35	41.88	40°09'7.1026"N	104°35'33.5323"W	0.00	
10330.00†	90.079	179.576	6988.10	2358.66	-2358.35	42.62	40°09'6.1144"N	104°35'33.5359"W	0.00	
10430.00†	90.079	179.576	6987.96	2458.65	-2458.34	43.36	40°09'5.1262"N	104°35'33.5396"W	0.00	
10530.00†	90.079	179.576	6987.82	2558.65	-2558.34	44.10	40°09'4.1380"N	104°35'33.5432"W	0.00	
10630.00†	90.079	179.576	6987.68	2658.65	-2658.34	44.84	40°09'3.1498"N	104°35'33.5469"W	0.00	
10730.00†	90.079	179.576	6987.54	2758.65	-2758.34	45.57	40°09'2.1616"N	104°35'33.5506"W	0.00	
10830.00†	90.079	179.576	6987.40	2858.65	-2858.33	46.31	40°09'1.1734"N	104°35'33.5542"W	0.00	
10930.00†	90.079	179.576	6987.26	2958.65	-2958.33	47.05	40°09'0.1852"N	104°35'33.5579"W	0.00	
11030.00†	90.079	179.576	6987.13	3058.65	-3058.33	47.79	40°08'59.1970"N	104°35'33.5615"W	0.00	
11130.00†	90.079	179.576	6986.99	3158.65	-3158.32	48.53	40°08'58.2088"N	104°35'33.5652"W	0.00	
11230.00†	90.079	179.576	6986.85	3258.65	-3258.32	49.27	40°08'57.2206"N	104°35'33.5688"W	0.00	
11330.00†	90.079	179.576	6986.71	3358.65	-3358.32	50.01	40°08'56.2324"N	104°35'33.5725"W	0.00	
11430.00†	90.079	179.576	6986.57	3458.65	-3458.32	50.75	40°08'55.2442"N	104°35'33.5762"W	0.00	
11530.00†	90.079	179.576	6986.43	3558.65	-3558.31	51.49	40°08'54.2560"N	104°35'33.5798"W	0.00	
11630.00†	90.079	179.576	6986.29	3658.65	-3658.31	52.23	40°08'53.2678"N	104°35'33.5835"W	0.00	
11730.00†	90.079	179.576	6986.16	3758.65	-3758.31	52.97	40°08'52.2796"N	104°35'33.5871"W	0.00	
11830.00†	90.079	179.576	6986.02	3858.65	-3858.30	53.71	40°08'51.2914"N	104°35'33.5908"W	0.00	
11930.00†	90.079	179.576	6985.88	3958.65	-3958.30	54.45	40°08'50.3032"N	104°35'33.5944"W	0.00	
12030.00†	90.079	179.576	6985.74	4058.65	-4058.30	55.19	40°08'49.3150"N	104°35'33.5981"W	0.00	
12130.00†	90.079	179.576	6985.60	4158.65	-4158.30	55.92	40°08'48.3268"N	104°35'33.6018"W	0.00	
12230.00†	90.079	179.576	6985.46	4258.65	-4258.29	56.66	40°08'47.3386"N	104°35'33.6054"W	0.00	
12330.00†	90.079	179.576	6985.32	4358.65	-4358.29	57.40	40°08'46.3504"N	104°35'33.6091"W	0.00	
12430.00†	90.079	179.576	6985.18	4458.65	-4458.29	58.14	40°08'45.3622"N	104°35'33.6127"W	0.00	
12530.00†	90.079	179.576	6985.05	4558.65	-4558.28	58.88	40°08'44.3740"N	104°35'33.6164"W	0.00	
12630.00†	90.079	179.576	6984.91	4658.65	-4658.28	59.62	40°08'43.3858"N	104°35'33.6200"W	0.00	
12730.00†	90.079	179.576	6984.77	4758.64	-4758.28	60.36	40°08'42.3976"N	104°35'33.6237"W	0.00	
12830.00†	90.079	179.576	6984.63	4858.64	-4858.28	61.10	40°08'41.4094"N	104°35'33.6273"W	0.00	



Planned Wellpath Report
Pioneer Y18-744 (REV-1.0) PWP
Page 5 of 7



REFERENCE WELLPATH IDENTIFICATION			
Operator	NOBLE ENERGY, INC	Well	Pioneer Y18-744
Field	WELD COUNTY (NOBLE NAD 83 GRID)	API/Legal	
Facility	SEC.07-T02N-R64W	Wellbore	Pioneer Y18-744 PWB
Slot	SLOT#22 PIONEER Y18-744 (658'FNL & 2240'FEL,SEC.07)		

WELLPATH DATA (183 stations) † = interpolated, ‡ = extrapolated station										
MD [ft]	Inclination [°]	Azimuth [°]	TVD [ft]	Vert Sect [ft]	North [ft]	East [ft]	Latitude	Longitude	DLS [°/100ft]	Comments
12930.00†	90.079	179.576	6984.49	4958.64	-4958.27	61.84	40°08'40.4212"N	104°35'33.6310"W	0.00	
13030.00†	90.079	179.576	6984.35	5058.64	-5058.27	62.58	40°08'39.4330"N	104°35'33.6347"W	0.00	
13130.00†	90.079	179.576	6984.21	5158.64	-5158.27	63.32	40°08'38.4447"N	104°35'33.6383"W	0.00	
13230.00†	90.079	179.576	6984.08	5258.64	-5258.26	64.06	40°08'37.4565"N	104°35'33.6420"W	0.00	
13330.00†	90.079	179.576	6983.94	5358.64	-5358.26	64.80	40°08'36.4683"N	104°35'33.6456"W	0.00	
13430.00†	90.079	179.576	6983.80	5458.64	-5458.26	65.53	40°08'35.4801"N	104°35'33.6493"W	0.00	
13530.00†	90.079	179.576	6983.66	5558.64	-5558.26	66.27	40°08'34.4919"N	104°35'33.6529"W	0.00	
13630.00†	90.079	179.576	6983.52	5658.64	-5658.25	67.01	40°08'33.5037"N	104°35'33.6566"W	0.00	
13730.00†	90.079	179.576	6983.38	5758.64	-5758.25	67.75	40°08'32.5155"N	104°35'33.6603"W	0.00	
13830.00†	90.079	179.576	6983.24	5858.64	-5858.25	68.49	40°08'31.5273"N	104°35'33.6639"W	0.00	
13930.00†	90.079	179.576	6983.11	5958.64	-5958.24	69.23	40°08'30.5391"N	104°35'33.6676"W	0.00	
14030.00†	90.079	179.576	6982.97	6058.64	-6058.24	69.97	40°08'29.5509"N	104°35'33.6712"W	0.00	
14130.00†	90.079	179.576	6982.83	6158.64	-6158.24	70.71	40°08'28.5627"N	104°35'33.6749"W	0.00	
14230.00†	90.079	179.576	6982.69	6258.64	-6258.24	71.45	40°08'27.5745"N	104°35'33.6785"W	0.00	
14330.00†	90.079	179.576	6982.55	6358.64	-6358.23	72.19	40°08'26.5863"N	104°35'33.6822"W	0.00	
14430.00†	90.079	179.576	6982.41	6458.64	-6458.23	72.93	40°08'25.5981"N	104°35'33.6858"W	0.00	
14530.00†	90.079	179.576	6982.27	6558.64	-6558.23	73.67	40°08'24.6099"N	104°35'33.6895"W	0.00	
14630.00†	90.079	179.576	6982.14	6658.64	-6658.23	74.41	40°08'23.6217"N	104°35'33.6932"W	0.00	
14730.00†	90.079	179.576	6982.00	6758.64	-6758.22	75.15	40°08'22.6335"N	104°35'33.6968"W	0.00	
14830.00†	90.079	179.576	6981.86	6858.64	-6858.22	75.88	40°08'21.6453"N	104°35'33.7005"W	0.00	
14930.00†	90.079	179.576	6981.72	6958.63	-6958.22	76.62	40°08'20.6571"N	104°35'33.7041"W	0.00	
15030.00†	90.079	179.576	6981.58	7058.63	-7058.21	77.36	40°08'19.6689"N	104°35'33.7078"W	0.00	
15130.00†	90.079	179.576	6981.44	7158.63	-7158.21	78.10	40°08'18.6807"N	104°35'33.7114"W	0.00	
15230.00†	90.079	179.576	6981.30	7258.63	-7258.21	78.84	40°08'17.6925"N	104°35'33.7151"W	0.00	
15330.00†	90.079	179.576	6981.16	7358.63	-7358.21	79.58	40°08'16.7043"N	104°35'33.7187"W	0.00	
15430.00†	90.079	179.576	6981.03	7458.63	-7458.20	80.32	40°08'15.7161"N	104°35'33.7224"W	0.00	
15530.00†	90.079	179.576	6980.89	7558.63	-7558.20	81.06	40°08'14.7279"N	104°35'33.7261"W	0.00	
15630.00†	90.079	179.576	6980.75	7658.63	-7658.20	81.80	40°08'13.7397"N	104°35'33.7297"W	0.00	
15730.00†	90.079	179.576	6980.61	7758.63	-7758.19	82.54	40°08'12.7515"N	104°35'33.7334"W	0.00	
15830.00†	90.079	179.576	6980.47	7858.63	-7858.19	83.28	40°08'11.7633"N	104°35'33.7370"W	0.00	
15930.00†	90.079	179.576	6980.33	7958.63	-7958.19	84.02	40°08'10.7751"N	104°35'33.7407"W	0.00	
16030.00†	90.079	179.576	6980.19	8058.63	-8058.19	84.76	40°08'9.7869"N	104°35'33.7443"W	0.00	
16130.00†	90.079	179.576	6980.06	8158.63	-8158.18	85.49	40°08'8.7987"N	104°35'33.7480"W	0.00	
16230.00†	90.079	179.576	6979.92	8258.63	-8258.18	86.23	40°08'7.8105"N	104°35'33.7516"W	0.00	
16330.00†	90.079	179.576	6979.78	8358.63	-8358.18	86.97	40°08'6.8223"N	104°35'33.7553"W	0.00	
16430.00†	90.079	179.576	6979.64	8458.63	-8458.17	87.71	40°08'5.8341"N	104°35'33.7590"W	0.00	
16530.00†	90.079	179.576	6979.50	8558.63	-8558.17	88.45	40°08'4.8459"N	104°35'33.7626"W	0.00	
16630.00†	90.079	179.576	6979.36	8658.63	-8658.17	89.19	40°08'3.8576"N	104°35'33.7663"W	0.00	
16730.00†	90.079	179.576	6979.22	8758.63	-8758.17	89.93	40°08'2.8694"N	104°35'33.7699"W	0.00	
16830.00†	90.079	179.576	6979.09	8858.63	-8858.16	90.67	40°08'1.8812"N	104°35'33.7736"W	0.00	
16930.00†	90.079	179.576	6978.95	8958.63	-8958.16	91.41	40°08'0.8930"N	104°35'33.7772"W	0.00	
17030.00†	90.079	179.576	6978.81	9058.63	-9058.16	92.15	40°07'59.9048"N	104°35'33.7809"W	0.00	
17130.00†	90.079	179.576	6978.67	9158.63	-9158.15	92.89	40°07'58.9166"N	104°35'33.7845"W	0.00	
17230.00†	90.079	179.576	6978.53	9258.62	-9258.15	93.63	40°07'57.9284"N	104°35'33.7882"W	0.00	
17330.00†	90.079	179.576	6978.39	9358.62	-9358.15	94.37	40°07'56.9402"N	104°35'33.7918"W	0.00	



Planned Wellpath Report

Pioneer Y18-744 (REV-1.0) PWP

Page 6 of 7



REFERENCE WELLPATH IDENTIFICATION			
Operator	NOBLE ENERGY, INC	Well	Pioneer Y18-744
Field	WELD COUNTY (NOBLE NAD 83 GRID)	API/Legal	
Facility	SEC.07-T02N-R64W	Wellbore	Pioneer Y18-744 PWB
Slot	SLOT#22 PIONEER Y18-744 (658'FNL & 2240'FEL,SEC.07)		

WELLPATH DATA (183 stations) † = interpolated, ‡ = extrapolated station										
MD [ft]	Inclination [°]	Azimuth [°]	TVD [ft]	Vert Sect [ft]	North [ft]	East [ft]	Latitude	Longitude	DLS [°/100ft]	Comments
17430.00†	90.079	179.576	6978.25	9458.62	-9458.15	95.11	40°07'55.9520"N	104°35'33.7955"W	0.00	
17530.00†	90.079	179.576	6978.12	9558.62	-9558.14	95.84	40°07'54.9638"N	104°35'33.7992"W	0.00	
17613.22	90.079	179.576	6978.00 ³	9641.84	-9641.36	96.46	40°07'54.1414"N	104°35'33.8022"W	0.00	BHL

HOLE & CASING SECTIONS - Ref Wellbore: Pioneer Y18-744 PWB Ref Wellpath: Pioneer Y18-744 (REV-1.0) PWP									
String/Diameter	Start MD [ft]	End MD [ft]	Interval [ft]	Start TVD [ft]	End TVD [ft]	Start N/S [ft]	Start E/W [ft]	End N/S [ft]	End E/W [ft]
9.625in Casing Surface	30.00	1950.00	1920.00	30.00	1950.00	0.00	0.00	0.00	0.00

TARGETS									
Name	MD [ft]	TVD [ft]	North [ft]	East [ft]	Grid East [US ft]	Grid North [US ft]	Latitude	Longitude	Shape
PIONEER Y18-785 SECTION 18	N/A	0.00	-45.79	-808.77	3252776.45	1301717.15	40°09'29.0520"N	104°35'44.1960"W	polygon
	2D Polygon: dimensions not calculated								
PIONEER Y18-785 SECTION 7	N/A	0.00	-45.79	-808.77	3252776.45	1301717.15	40°09'29.0520"N	104°35'44.1960"W	polygon
	2D Polygon: dimensions not calculated								
3) PIONEER Y18-744 BHL PLAN (200'FSL & 2231'FEL,SEC.18)	17613.22	6978.00	-9641.36	96.46	3253681.65	1292122.00	40°07'54.1414"N	104°35'33.8022"W	point
2) PIONEER Y18-744 T1	7712.50	6991.72	259.07	25.68	3253610.87	1302022.00	40°09'31.9802"N	104°35'33.4091"W	point
1) PIONEER Y18-744 LP PLAN (200'FNL & 2213'FEL,SEC.07)	7512.09	6992.00	459.43	30.01	3253615.20	1302222.35	40°09'33.9597"N	104°35'33.3270"W	point
SECTION LINES - SEC.06-T02N-R64W	N/A	7998.00	5866.85	-2903.16	3250682.16	1307629.53	40°10'27.6881"N	104°36'10.3986"W	polygon
	2D Polygon: dimensions not calculated								

SURVEY PROGRAM - Ref Wellbore: Pioneer Y18-744 PWB Ref Wellpath: Pioneer Y18-744 (REV-1.0) PWP				
Start MD [ft]	End MD [ft]	Positional Uncertainty Model	Log Name/Comment	Wellbore
30.00	1950.00	Gyrodata 2015 - GC+DROP+COND		Pioneer Y18-744 PWB
1950.00	17627.41	OWSG MWD rev2 (MS+IFR1)		Pioneer Y18-744 PWB



Planned Wellpath Report
Pioneer Y18-744 (REV-1.0) PWP
Page 7 of 7



REFERENCE WELLPATH IDENTIFICATION			
Operator	NOBLE ENERGY, INC	Well	Pioneer Y18-744
Field	WELD COUNTY (NOBLE NAD 83 GRID)	API/Legal	
Facility	SEC.07-T02N-R64W	Wellbore	Pioneer Y18-744 PWB
Slot	SLOT#22 PIONEER Y18-744 (658'FNL & 2240'FEL,SEC.07)		

DESIGN COMMENTS				
MD [ft]	Inclination [°]	Azimuth [°]	TVD [ft]	Comment
30.00	0.000	2.109	30.00	SHL
2230.00	0.000	2.109	2230.00	End of Tangent
3076.90	16.938	2.109	3064.61	Build (XS)
6323.04	16.938	2.109	6169.94	KOP
7512.09	90.079	181.238	6992.00	LP/TPZ
7712.50	90.079	181.238	6991.72	T1
7878.69	90.079	179.576	6991.49	3D Arc (J)
17613.22	90.079	179.576	6978.00	BHL



Closest Approach Clearance Summary Report

Pioneer Y18-744 (REV-1.0) PWP - SPE WPTS Stop Drilling HSE Risk (2017)

Page 1 of 4



REFERENCE WELLPATH IDENTIFICATION			
Operator	NOBLE ENERGY, INC	Well	Pioneer Y18-744
Field	WELD COUNTY (NOBLE NAD 83 GRID)	API/Legal	
Facility	SEC.07-T02N-R64W	Wellbore	Pioneer Y18-744 PWB
Slot	SLOT#22 PIONEER Y18-744 (658'FNL & 2240'FEL,SEC.07)		

REPORT SETUP INFORMATION			
Projection System	NAD83 / Lambert Colorado SP, Northern Zone (501), US feet	Software System	WellArchitect® 6.0
North Reference	Grid	User	Guenaler
Scale	0.999958	Report Generated	5/23/2022 at 7:44:35 AM
Convergence at slot	0.59° East	Database	WellArchitectDB

WELLPATH LOCATION						
	Local coordinates		Grid coordinates		Geographic coordinates	
	North[ft]	East[ft]	Easting[US ft]	Northing[US ft]	Latitude	Longitude
Slot Location	43.34	926.20	3253585.19	1301762.94	40°09'29.4228"N	104°35'33.7740"W
Facility Reference Pt			3252659.03	1301719.60	40°09'29.0880"N	104°35'45.7080"W
Field Reference Pt			3000000.00	4454105.15	48°46'34.3150"N	105°30'0.0000"W

WELLPATH DATUM			
Calculation method	Minimum Curvature	(4885'GL+30'KB@4915'RKB) (RKB) to Facility Vertical Datum	4915.00ft
Horizontal Reference Pt	Slot	(4885'GL+30'KB@4915'RKB) (RKB) to Mean Sea Level	4915.00ft
Vertical Reference Pt	(4885'GL+30'KB@4915'RKB) (RKB)	(4885'GL+30'KB@4915'RKB) (RKB) to Mud Line at Slot (SLOT#22 PIONEER Y18-744 (658'FNL & 2240'FEL,SEC.07))	4915.00ft
MD Reference Pt	(4885'GL+30'KB@4915'RKB) (RKB)		
Field Vertical Reference	Mean Sea Level		

POSITIONAL UNCERTAINTY CALCULATION SETTINGS					
Ellipse Confidence Limit	3.50 Std Dev	Ellipse Start MD	30.00ft	Surface Position Uncertainty	included
Declination	7.73° East of TN	Dip Angle	66.45°	Mag Field Strength	51798 nT
Slot Surface Uncertainty @1SD		Horizontal	0.100ft	Vertical	1.000ft
Facility Surface Uncertainty @1SD		Horizontal	8.200ft	Vertical	3.000ft
Positional Uncertainty values in the WELLPATH DATA table are the projection of the ellipsoid of uncertainty onto the vertical and horizontal planes					



Closest Approach Clearance Summary Report

Pioneer Y18-744 (REV-1.0) PWP - SPE WPTS Stop Drilling HSE Risk (2017)

Page 2 of 4



REFERENCE WELLPATH IDENTIFICATION			
Operator	NOBLE ENERGY, INC	Well	Pioneer Y18-744
Field	WELD COUNTY (NOBLE NAD 83 GRID)	API/Legal	
Facility	SEC.07-T02N-R64W	Wellbore	Pioneer Y18-744 PWB
Slot	SLOT#22 PIONEER Y18-744 (658'FNL & 2240'FEL,SEC.07)		

PROXIMITY-SCAN RULE			
Rule Name	SPE WPTS Stop Drilling HSE Risk (2017)	Rule Based On	Ratio
Plane of Rule	Closest Approach	Threshold Value	1.00
Include Casing & Hole Size	yes	Apply Cone of Safety	no

HOLE & CASING SECTIONS - Ref Wellbore: Pioneer Y18-744 PWB Ref Wellpath: Pioneer Y18-744 (REV-1.0) PWP									
String/Diameter	Start MD [ft]	End MD [ft]	Interval [ft]	Start TVD [ft]	End TVD [ft]	Start N/S [ft]	Start E/W [ft]	End N/S [ft]	End E/W [ft]
9.625in Casing Surface	30.00	1950.00	1920.00	30.00	1950.00	0.00	0.00	0.00	0.00

SURVEY PROGRAM - Ref Wellbore: Pioneer Y18-744 PWB Ref Wellpath: Pioneer Y18-744 (REV-1.0) PWP				
Start MD [ft]	End MD [ft]	Positional Uncertainty Model	Log Name/Comment	Wellbore
30.00	1950.00	Gyrodata 2015 - GC+DROP+COND		Pioneer Y18-744 PWB
1950.00	17627.41	OWSG MWD rev2 (MS+IFR1)		Pioneer Y18-744 PWB



Closest Approach Clearance Summary Report

Pioneer Y18-744 (REV-1.0) PWP - SPE WPTS Stop Drilling HSE Risk (2017)

Page 3 of 4



REFERENCE WELLPATH IDENTIFICATION			
Operator	NOBLE ENERGY, INC	Well	Pioneer Y18-744
Field	WELD COUNTY (NOBLE NAD 83 GRID)	API/Legal	
Facility	SEC.07-T02N-R64W	Wellbore	Pioneer Y18-744 PWB
Slot	SLOT#22 PIONEER Y18-744 (658'FNL & 2240'FEL,SEC.07)		

CALCULATION RANGE & CUTOFF		
From: 30.00ft MD	To: 17613.22ft MD	C-C Cutoff: (none)

OFFSET WELL CLEARANCE SUMMARY (32 Offset Wellpaths selected) Ratios are calculated in Closest Approach plane												
Offset Facility	Offset Slot	Offset Well	Offset Wellbore	Offset Wellpath	Wellbore Status	C-C Clearance Distance			Rule Separation Ratio			
						Ref MD [ft]	Min C-C Clear Dist [ft]	Diverging from MD [ft]	Ref MD of Min Ratio [ft]	Min Ratio	Min Ratio Dvrg from [ft]	Rule Status
SEC.07-T02N-R64W	SLOT#10 HP Farms Y 7-15JI (PR)	HP Farms Y 7-15JI (PR)	HP Farms Y 7-15JI (PR) AWB	HP Farms Y 7-15JI (PR) AWP	Drilling	11893.23	62.94	11893.23	11893.93	0.77	11893.93	FAIL
SEC.07-T02N-R64W	SLOT#21 PIONEER Y18-735 (681'FNL & 2240'FEL,SEC.07)	Pioneer Y18-735	Pioneer Y18-735 PWB	Pioneer Y18-735 (REV-1.0) PWP	Planned	2395.32	21.54	8030.00	2408.83	0.96	17613.22	FAIL
SEC.07-T02N-R64W	SLOT#05 PIONEER D31-744 (706'FNL & 2142'FEL, SEC.07)	PIONEER D31-744	PIONEER D31-744 AWB	PIONEER D31-744 AWP	Drilling	7379.53	50.79	7379.53	7375.05	1.00	7375.05	WARN
SEC.07-T02N-R64W	SLOT#12 HP Y07-10D (PA)	HP Y07-10D (PA)	HP Y07-10D (PA) AWB	HP Y07-10D (PA) AWP	Drilling	10483.23	107.93	10483.23	10484.59	1.65	10484.59	PASS
SEC.07-T02N-R64W	SLOT#20 PIONEER Y18-730 (703'FNL & 2239'FEL,SEC.07)	Pioneer Y18-730	Pioneer Y18-730 PWB	PIONEER Y18-730 (REV-1.0) PWP	Planned	2345.91	44.18	2345.91	2444.83	2.00	17613.22	PASS
SEC.07-T02N-R64W	SLOT#23 PIONEER Y18-756 (639'FNL & 2089'FWL,SEC.07)	Pioneer Y18-756	Pioneer Y18-756 PWB	PIONEER Y18-756 (REV-1.0) PWP	Planned	7355.16	619.93	7355.16	17613.22	2.94	17613.22	PASS
SEC.07-T02N-R64W	SLOT#19 PIONEER Y18-725 (726'FNL & 2239'FEL,SEC.07)	PIONEER Y18-725	PIONEER Y18-725 PWB	PIONEER Y18-725 (REV-1.0) PWP	Planned	2436.00	58.19	8030.00	2454.25	2.96	17613.22	PASS
Y Section 18	(HSR Harkis 15-18 (PR))	HSR Harkis 15-18 (PR)	Wellbore #1	Wellbore #1\As-Drilled	Drilling	16486.16	741.98	16486.16	16332.06	3.59	16332.06	PASS
SEC.07-T02N-R64W	SLOT#17 Pioneer Y07-07D (PA)	Pioneer Y07-07D (PA)	Pioneer Y07-07D (PA) AWB	Pioneer Y07-07D (PA) AWP	Drilling	9165.83	232.28	9165.83	9160.70	4.42	9160.70	PASS
SEC.07-T02N-R64W	SLOT#18 PIONEER Y18-715 (748'FNL & 2239'FEL,SEC.07)	Pioneer Y18-715	Pioneer Y18-715 PWB	PIONEER Y18-715 (REV-1.0) PWP	Planned	30.00	89.99	2230.00	2295.14	4.43	17613.22	PASS
Y Section 18	(Lyle V Cooksey Gas Unit 1 (PR))	Lyle V Cooksey Gas Unit 1 (PR)	Wellbore #1	Wellbore #1\Gyro Surveys	Drilling	14267.62	1163.04	14267.62	14645.37	5.56	14645.37	PASS
SEC.07-T02N-R64W	SLOT#24 PIONEER Y18-766 (661'FNL & 2088'FWL,SEC.07)	Pioneer Y18-766	Pioneer Y18-766 PWB	Pioneer Y18-766 (REV-1.0) PWP	Planned	30.00	762.65	7878.69	17613.22	5.90	17613.22	PASS
SEC.07-T02N-R64W	SLOT#06 PIONEER D31-735 (706'FNL & 2219'FEL, SEC.07)	PIONEER D31-735	PIONEER D31-735 AWB	PIONEER D31-735 AWP	Drilling	2088.40	120.68	7530.00	2234.74	6.70	7430.00	PASS
SEC.07-T02N-R64W	SLOT#13 Perkins 31-7 (SI)	Perkins 31-7 (SI)	Perkins 31-7 (SI) AWB	Perkins 31-7 (SI) AWP	Drilling	30.00	272.60	7930.00	7960.14	7.15	7960.14	PASS
SEC.07-T02N-R64W	SLOT#07 PIONEER D31-725 (707'FNL & 2097'FEL, SEC.07)	PIONEER D31-725	PIONEER D31-725 AWB	PIONEER D31-725 AWP	Drilling	2191.38	139.19	7630.00	2220.27	7.74	7530.00	PASS
SEC.07-T02N-R64W	SLOT#25 PIONEER Y18-770 (684'FNL & 2088'FWL,SEC.07)	PIONEER Y18-770	PIONEER Y18-770 PWB	PIONEER Y18-770 (REV-1.0) PWP	Planned	30.00	763.69	7830.00	17613.22	7.76	17613.22	PASS
SEC.07-T02N-R64W	SLOT#26 PIONEER Y18-775 (706'FNL & 2088'FWL,SEC.07)	Pioneer Y18-775	Pioneer Y18-775 PWB	PIONEER Y18-775 (REV-1.0) PWP	Planned	30.00	765.39	7878.69	17613.22	8.86	17613.22	PASS
SEC.07-T02N-R64W	SLOT#28 UPRC 7-10Q (PR)	UPRC 7-10Q (PR)	UPRC 7-10Q (PR) AWB	UPRC 7-10Q (PR) AWP	Drilling	11152.75	629.16	11152.75	11196.78	9.23	11196.78	PASS
SEC.07-T02N-R64W	SLOT#04 PIONEER D31-716 (707'FNL & 2074'FEL, SEC.07)	PIONEER D31-716	PIONEER D31-716 AWB	PIONEER D31-716 AWP	Drilling	2001.68	165.87	7730.00	2208.68	9.26	8030.00	PASS
Y Section 18	(Charles R Milliken Unit 1 (PR))	Charles R Milliken Unit 1 (PR)	Wellbore #1	Wellbore #1\Gyro Surveys	Drilling	16345.75	1866.61	16345.75	16846.67	9.43	16846.67	PASS
SEC.07-T02N-R64W	SLOT#27 PIONEER Y18-785 (729'FNL & 2088'FWL,SEC.07)	Pioneer Y18-785	Pioneer Y18-785 PWB	PIONEER Y18-785 (REV-1.0) PWP_AC	Planned	30.00	767.71	2230.00	17613.22	11.81	17613.22	PASS
Y Section 18	(ADA Harkins Unit A1 (PA))	ADA Harkins Unit A1 (PA)	Wellbore #1	Wellbore #1\Gyro Surveys	Drilling	13875.52	1687.48	13875.52	13952.38	13.83	13952.38	PASS
SEC.07-T02N-R64W	SLOT#15 Pioneer 22-7 (SI)	Pioneer 22-7 (SI)	Pioneer 22-7 (SI) AWB	Pioneer 22-7 (SI) AWP	Drilling	9499.21	838.26	9499.21	9578.98	15.99	9578.98	PASS
SEC.07-T02N-R64W	SLOT#16 Pioneer USX Y07-08D (PR)	Pioneer USX Y07-08D (PR)	Pioneer USX Y07-08D (PR) AWB	Pioneer USX Y07-08D (PR) AWP	Drilling	9361.08	1528.90	9361.08	9468.25	17.16	9468.25	PASS
SEC.07-T02N-R64W	SLOT#03 PIONEER D31-756 (681'FNL & 1991'FWL,SEC.07)	PIONEER D31-756	PIONEER D31-756 AWB	PIONEER D31-756 AWP	Drilling	2246.16	858.87	7512.09	7413.17	17.58	7413.17	PASS



Closest Approach Clearance Summary Report

Pioneer Y18-744 (REV-1.0) PWP - SPE WPTS Stop Drilling HSE Risk (2017)

Page 4 of 4



REFERENCE WELLPATH IDENTIFICATION			
Operator	NOBLE ENERGY, INC	Well	Pioneer Y18-744
Field	WELD COUNTY (NOBLE NAD 83 GRID)	API/Legal	
Facility	SEC.07-T02N-R64W	Wellbore	Pioneer Y18-744 PWB
Slot	SLOT#22 PIONEER Y18-744 (658'FNL & 2240'FEL,SEC.07)		

CALCULATION RANGE & CUTOFF		
From: 30.00ft MD	To: 17613.22ft MD	C-C Cutoff: (none)

OFFSET WELL CLEARANCE SUMMARY (32 Offset Wellpaths selected) Ratios are calculated in Closest Approach plane												
Offset Facility	Offset Slot	Offset Well	Offset Wellbore	Offset Wellpath	Wellbore Status	C-C Clearance Distance			Rule Separation Ratio			
						Ref MD [ft]	Min C-C Clear Dist [ft]	Diverging from MD [ft]	Ref MD of Min Ratio [ft]	Min Ratio	Min Ratio Dvrg from [ft]	Rule Status
SEC.07-T02N-R64W	SLOT#14 Perkins USX Y 7-17 (SI)	Perkins USX Y 7-17 (SI)	Perkins USX Y 7-17 (SI) AWB	Perkins USX Y 7-17 (SI) AWP	Drilling	8574.26	950.55	8574.26	8672.73	21.17	8672.73	PASS
SEC.07-T02N-R64W	SLOT#29 UPRR 53 PAN AM E 1 (PA)	UPRR 53 PAN AM E 1 (PA)	UPRR 53 PAN AM E 1 (PA) AWB	UPRR 53 PAN AM E 1 (PA) AWP	Drilling	11242.65	1818.98	11242.65	11595.94	25.39	11595.94	PASS
SEC.07-T02N-R64W	SLOT#11 HP Y07-09 (PR)	HP Y07-09 (PR)	HP Y07-09 (PR) AWB	HP Y07-09 (PR) AWP	Drilling	10571.39	1624.44	10571.39	10869.56	25.91	10869.56	PASS
SEC.07-T02N-R64W	SLOT#02 PIONEER D31-775 (680'FNL & 1946'FWL, SEC.07)	PIONEER D31-775	PIONEER D31-775 AWB	PIONEER D31-775 AWP	Drilling	1988.50	898.05	7730.00	7646.79	33.68	7646.79	PASS
SEC.07-T02N-R64W	SLOT#08 Harkis 1-7 (PA)	Harkis 1-7 (PA)	Harkis 1-7 (PA) AWB	Harkis 1-7 (PA) AWP	Drilling	8756.36	1847.55	8756.36	9167.15	39.47	9167.15	PASS
SEC.07-T02N-R64W	SLOT#01 PIONEER D31-785 (680'FNL & 1923'FWL, SEC.07)	PIONEER D31-785	PIONEER D31-785 AWB	PIONEER D31-785 AWP	Drilling	30.00	927.24	7830.00	8270.96	47.92	8270.96	PASS
SEC.07-T02N-R64W	SLOT#09 Harkis 11-7 (PA)	Harkis 11-7 (PA)	Harkis 11-7 (PA) AWB	Harkis 11-7 (PA) AWP	Drilling	2018.88	2207.84	7930.00	8475.78	51.87	8475.78	PASS