

# NOBLE ENERGY, INC



Location: COLORADO Slot: SLOT#26 PIONEER Y18-775 (706°FNL & 2088°FWL, SEC.07)

Field: WELD COUNTY (NOBLE NAD 83 GRID) Well: Pioneer Y18-775

Facility: SEC.07-T02N-R64W Wellbore: Pioneer Y18-775 PWB

Plot reference wellpath is PIONEER Y18-775 (REV-1.0) PWP

Grid System: NAD83 / Lambert Colorado SP, Northern Zone (501), US feet

True vertical depths are referenced to (4885 GL+30 KB @ 4915 RKB) (RKB)

North Reference: Grid north

Reference wellpath measured depths are referenced to (4885 GL+30 KB @ 4915 RKB) (RKB)

Scale: True distance

(4885 GL+30 KB @ 4915 RKB) (RKB) to Mean Sea Level: 4915 feet

Coordinates are in feet referenced to Slot

Mean Sea Level to Mud line (At Slot: SLOT#26 PIONEER Y18-775 (706°FNL & 2088°FWL, SEC.07)): 0 feet

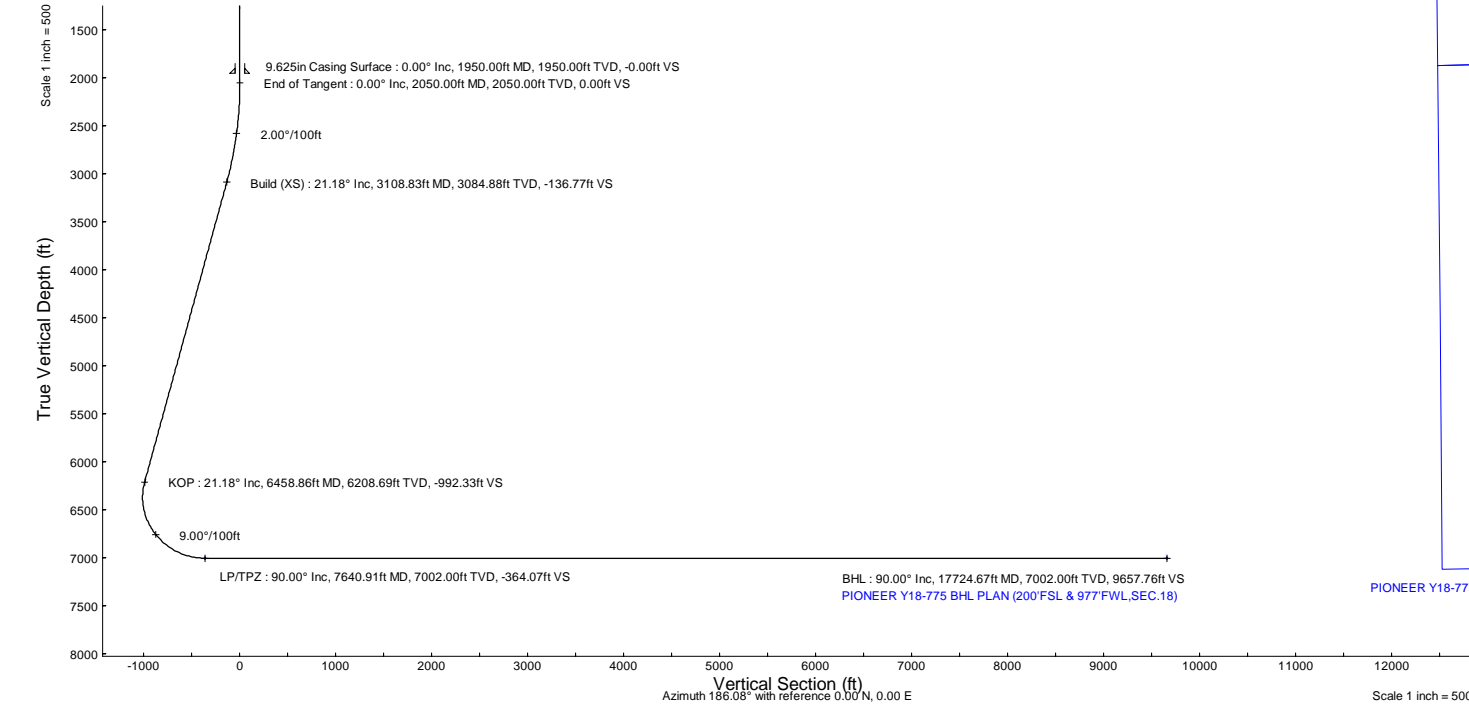
Depths are in feet

Created by: gusnater on 2022-05-23; Database: WA\_Denver

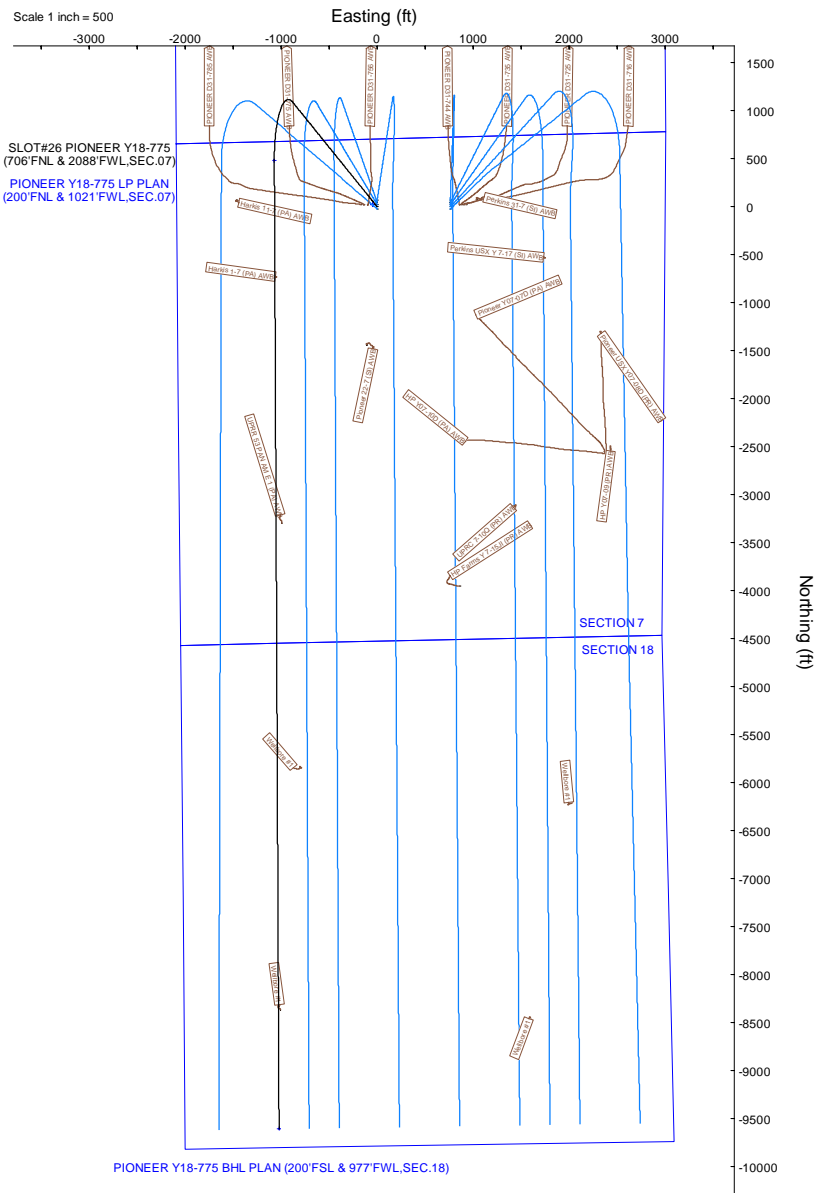
Location Information						
Facility Name			Grid East (US ft)	Grid North (US ft)	Latitude	Longitude
SEC.07-T02N-R64W			3252658.032	1301719.599	40°09'29.0880"N	104°35'45.7080"W
Slot			Grid East (US ft)	Grid North (US ft)	Latitude	Longitude
SLOT#26 PIONEER Y18-775 (706°FNL & 2088°FWL, SEC.07)	Local N (ft)	Local E (ft)	3252822.794	1301695.768	40°09'29.8360"N	104°35'43.6020"W
(4885 GL+30 KB @ 4915 RKB) (RKB) to Mud line (At Slot: SLOT#26 PIONEER Y18-775 (706°FNL & 2088°FWL, SEC.07))			4915 ft			
Mean Sea Level to Mud line (At Slot: SLOT#26 PIONEER Y18-775 (706°FNL & 2088°FWL, SEC.07))			0 ft			
(4885 GL+30 KB @ 4915 RKB) (RKB) to Mean Sea Level			4915 ft			

Targets						
Name	MD (ft)	TVD (ft)	Local N (ft)	Local E (ft)	Grid East (US ft)	Grid North (US ft)
PIONEER Y18-785 SECTION 18	N/A	0.00	21.39	-46.34	3252776.45	1301717.15
PIONEER Y18-785 SECTION 7	N/A	0.00	21.39	-46.34	3252776.45	1301717.15
PIONEER Y18-775 BHL PLAN (200°FSL & 977°FWL, SEC.18)	17724.67	7002.00	-9603.51	-1022.14	3251800.70	1292092.68
PIONEER Y18-775 LP PLAN (200°FNL & 1021°FWL, SEC.07)	7640.91	7002.00	480.13	-1071.11	3251751.73	1302175.87
SECTION LINES - SEC.06-T02N-R64W	N/A	7996.00	5934.02	-2140.73	3250682.16	1307629.53

Bottom Hole Location									
MD (ft)	Inc (°)	Az (°)	TVD (ft)	Local N (ft)	Local E (ft)	Grid East (US ft)	Grid North (US ft)	Latitude	Longitude
17724.67	90.000	179.722	7002.00	-9603.51	-1022.14	3251800.70	1292092.68	40°07'54.0411"N	104°35'58.0219"W



Well Profile Data								
Design Comment	MD (ft)	Inc (°)	Az (°)	TVD (ft)	Local N (ft)	Local E (ft)	DLS (°/100ft)	VS (ft)
SHL	30.00	0.000	321.064	30.00	0.00	0.00	0.00	0.00
End of Tangent	2050.00	0.000	321.064	2050.00	0.00	0.00	0.00	0.00
Build (XS)	3108.83	21.177	321.064	3084.88	150.48	-121.58	2.00	-136.77
KOP	6458.86	21.177	321.064	6208.69	1091.82	-882.11	0.00	-992.33
LP/TPZ	7640.91	90.000	179.722	7002.00	480.13	-1071.11	9.00	-364.07
BHL	17724.67	90.000	179.722	7002.00	-9603.51	-1022.14	0.00	9657.76





Planned Wellpath Report  
PIONEER Y18-775 (REV-1.0) PWP  
Page 1 of 7



REFERENCE WELLPATH IDENTIFICATION			
Operator	NOBLE ENERGY, INC	Well	Pioneer Y18-775
Field	WELD COUNTY (NOBLE NAD 83 GRID)	API/Legal	
Facility	SEC.07-T02N-R64W	Wellbore	Pioneer Y18-775 PWB
Slot	SLOT#26 PIONEER Y18-775 (706'FNL & 2088'FWL,SEC.07)		

REPORT SETUP INFORMATION			
Projection System	NAD83 / Lambert Colorado SP, Northern Zone (501), US feet	Software System	WellArchitect® 6.0
North Reference	Grid	User	Guenaler
Scale	0.999958	Report Generated	5/23/2022 at 10:08:32 AM
Convergence at slot	0.58° East	Database	WA_Denver

WELLPATH LOCATION						
	Local coordinates		Grid coordinates		Geographic coordinates	
	North[ft]	East[ft]	Easting[US ft]	Northing[US ft]	Latitude	Longitude
Slot Location	-23.83	163.77	3252822.79	1301695.77	40°09'28.8360"N	104°35'43.6020"W
Facility Reference Pt			3252659.03	1301719.60	40°09'29.0880"N	104°35'45.7080"W
Field Reference Pt			3000000.00	4454105.15	48°46'34.3150"N	105°30'0.0000"W

WELLPATH DATUM			
Calculation method	Minimum curvature	(4885'GL+30'KB@4915'RKB) (RKB) to Facility Vertical Datum	4915.00ft
Horizontal Reference Pt	Slot	(4885'GL+30'KB@4915'RKB) (RKB) to Mean Sea Level	4915.00ft
Vertical Reference Pt	(4885'GL+30'KB@4915'RKB) (RKB)	(4885'GL+30'KB@4915'RKB) (RKB) to Mud Line at Slot (SLOT#26 PIONEER Y18-775 (706'FNL & 2088'FWL,SEC.07))	4915.00ft
MD Reference Pt	(4885'GL+30'KB@4915'RKB) (RKB)	Section Origin	N 0.00, E 0.00 ft
Field Vertical Reference	Mean Sea Level	Section Azimuth	186.08°



Planned Wellpath Report  
PIONEER Y18-775 (REV-1.0) PWP  
Page 2 of 7



REFERENCE WELLPATH IDENTIFICATION			
Operator	NOBLE ENERGY, INC	Well	Pioneer Y18-775
Field	WELD COUNTY (NOBLE NAD 83 GRID)	API/Legal	
Facility	SEC.07-T02N-R64W	Wellbore	Pioneer Y18-775 PWB
Slot	SLOT#26 PIONEER Y18-775 (706'FNL & 2088'FWL,SEC.07)		

WELLPATH DATA (183 stations) † = interpolated, ‡ = extrapolated station										
MD [ft]	Inclination [°]	Azimuth [°]	TVD [ft]	Vert Sect [ft]	North [ft]	East [ft]	Latitude	Longitude	DLS [°/100ft]	Comments
0.00†	0.000	321.064	0.00	0.00	0.00	0.00	40°09'28.8360"N	104°35'43.6020"W	0.00	
30.00	0.000	321.064	30.00	0.00	0.00	0.00	40°09'28.8360"N	104°35'43.6020"W	0.00	SHL
130.00†	0.000	321.064	130.00	0.00	0.00	0.00	40°09'28.8360"N	104°35'43.6020"W	0.00	
230.00†	0.000	321.064	230.00	0.00	0.00	0.00	40°09'28.8360"N	104°35'43.6020"W	0.00	
330.00†	0.000	321.064	330.00	0.00	0.00	0.00	40°09'28.8360"N	104°35'43.6020"W	0.00	
430.00†	0.000	321.064	430.00	0.00	0.00	0.00	40°09'28.8360"N	104°35'43.6020"W	0.00	
530.00†	0.000	321.064	530.00	0.00	0.00	0.00	40°09'28.8360"N	104°35'43.6020"W	0.00	
630.00†	0.000	321.064	630.00	0.00	0.00	0.00	40°09'28.8360"N	104°35'43.6020"W	0.00	
730.00†	0.000	321.064	730.00	0.00	0.00	0.00	40°09'28.8360"N	104°35'43.6020"W	0.00	
830.00†	0.000	321.064	830.00	0.00	0.00	0.00	40°09'28.8360"N	104°35'43.6020"W	0.00	
930.00†	0.000	321.064	930.00	0.00	0.00	0.00	40°09'28.8360"N	104°35'43.6020"W	0.00	
1030.00†	0.000	321.064	1030.00	0.00	0.00	0.00	40°09'28.8360"N	104°35'43.6020"W	0.00	
1130.00†	0.000	321.064	1130.00	0.00	0.00	0.00	40°09'28.8360"N	104°35'43.6020"W	0.00	
1230.00†	0.000	321.064	1230.00	0.00	0.00	0.00	40°09'28.8360"N	104°35'43.6020"W	0.00	
1330.00†	0.000	321.064	1330.00	0.00	0.00	0.00	40°09'28.8360"N	104°35'43.6020"W	0.00	
1430.00†	0.000	321.064	1430.00	0.00	0.00	0.00	40°09'28.8360"N	104°35'43.6020"W	0.00	
1530.00†	0.000	321.064	1530.00	0.00	0.00	0.00	40°09'28.8360"N	104°35'43.6020"W	0.00	
1630.00†	0.000	321.064	1630.00	0.00	0.00	0.00	40°09'28.8360"N	104°35'43.6020"W	0.00	
1730.00†	0.000	321.064	1730.00	0.00	0.00	0.00	40°09'28.8360"N	104°35'43.6020"W	0.00	
1830.00†	0.000	321.064	1830.00	0.00	0.00	0.00	40°09'28.8360"N	104°35'43.6020"W	0.00	
1930.00†	0.000	321.064	1930.00	0.00	0.00	0.00	40°09'28.8360"N	104°35'43.6020"W	0.00	
2030.00†	0.000	321.064	2030.00	0.00	0.00	0.00	40°09'28.8360"N	104°35'43.6020"W	0.00	
2050.00	0.000	321.064	2050.00	0.00	0.00	0.00	40°09'28.8360"N	104°35'43.6020"W	0.00	End of Tangent
2130.00†	1.600	321.064	2129.99	-0.79	0.87	-0.70	40°09'28.8447"N	104°35'43.6109"W	2.00	
2230.00†	3.600	321.064	2229.88	-4.00	4.40	-3.55	40°09'28.8798"N	104°35'43.6472"W	2.00	
2330.00†	5.600	321.064	2329.55	-9.67	10.64	-8.59	40°09'28.9420"N	104°35'43.7113"W	2.00	
2430.00†	7.600	321.064	2428.89	-17.79	19.58	-15.82	40°09'29.0310"N	104°35'43.8031"W	2.00	
2530.00†	9.600	321.064	2527.76	-28.36	31.21	-25.21	40°09'29.1469"N	104°35'43.9226"W	2.00	
2630.00†	11.600	321.064	2626.05	-41.37	45.51	-36.77	40°09'29.2895"N	104°35'44.0696"W	2.00	
2730.00†	13.600	321.064	2723.63	-56.79	62.48	-50.48	40°09'29.4585"N	104°35'44.2439"W	2.00	
2830.00†	15.600	321.064	2820.40	-74.61	82.09	-66.32	40°09'29.6538"N	104°35'44.4453"W	2.00	
2930.00†	17.600	321.064	2916.23	-94.80	104.31	-84.27	40°09'29.8752"N	104°35'44.6736"W	2.00	
3030.00†	19.600	321.064	3011.00	-117.35	129.12	-104.32	40°09'30.1224"N	104°35'44.9285"W	2.00	
3108.83	21.177	321.064	3084.88	-136.77	150.48	-121.58	40°09'30.3352"N	104°35'45.1480"W	2.00	Build (XS)
3130.00†	21.177	321.064	3104.63	-142.17	156.43	-126.38	40°09'30.3945"N	104°35'45.2091"W	0.00	
3230.00†	21.177	321.064	3197.87	-167.71	184.53	-149.08	40°09'30.6744"N	104°35'45.4978"W	0.00	
3330.00†	21.177	321.064	3291.12	-193.25	212.63	-171.79	40°09'30.9544"N	104°35'45.7865"W	0.00	
3430.00†	21.177	321.064	3384.37	-218.79	240.73	-194.49	40°09'31.2343"N	104°35'46.0752"W	0.00	
3530.00†	21.177	321.064	3477.62	-244.33	268.83	-217.19	40°09'31.5143"N	104°35'46.3638"W	0.00	
3630.00†	21.177	321.064	3570.86	-269.87	296.93	-239.89	40°09'31.7942"N	104°35'46.6525"W	0.00	
3730.00†	21.177	321.064	3664.11	-295.41	325.02	-262.60	40°09'32.0742"N	104°35'46.9412"W	0.00	
3830.00†	21.177	321.064	3757.36	-320.95	353.12	-285.30	40°09'32.3542"N	104°35'47.2299"W	0.00	
3930.00†	21.177	321.064	3850.60	-346.48	381.22	-308.00	40°09'32.6341"N	104°35'47.5186"W	0.00	
4030.00†	21.177	321.064	3943.85	-372.02	409.32	-330.70	40°09'32.9141"N	104°35'47.8073"W	0.00	
4130.00†	21.177	321.064	4037.10	-397.56	437.42	-353.40	40°09'33.1940"N	104°35'48.0960"W	0.00	



Planned Wellpath Report  
PIONEER Y18-775 (REV-1.0) PWP  
Page 3 of 7



REFERENCE WELLPATH IDENTIFICATION			
Operator	NOBLE ENERGY, INC	Well	Pioneer Y18-775
Field	WELD COUNTY (NOBLE NAD 83 GRID)	API/Legal	
Facility	SEC.07-T02N-R64W	Wellbore	Pioneer Y18-775 PWB
Slot	SLOT#26 PIONEER Y18-775 (706'FNL & 2088'FWL,SEC.07)		

WELLPATH DATA (183 stations) † = interpolated, ‡ = extrapolated station										
MD [ft]	Inclination [°]	Azimuth [°]	TVD [ft]	Vert Sect [ft]	North [ft]	East [ft]	Latitude	Longitude	DLS [°/100ft]	Comments
4230.00†	21.177	321.064	4130.35	-423.10	465.52	-376.11	40°09'33.4740"N	104°35'48.3847"W	0.00	
4330.00†	21.177	321.064	4223.59	-448.64	493.62	-398.81	40°09'33.7539"N	104°35'48.6734"W	0.00	
4430.00†	21.177	321.064	4316.84	-474.18	521.72	-421.51	40°09'34.0339"N	104°35'48.9621"W	0.00	
4530.00†	21.177	321.064	4410.09	-499.72	549.82	-444.21	40°09'34.3138"N	104°35'49.2508"W	0.00	
4630.00†	21.177	321.064	4503.34	-525.26	577.92	-466.91	40°09'34.5938"N	104°35'49.5395"W	0.00	
4730.00†	21.177	321.064	4596.58	-550.80	606.02	-489.62	40°09'34.8737"N	104°35'49.8282"W	0.00	
4830.00†	21.177	321.064	4689.83	-576.33	634.12	-512.32	40°09'35.1537"N	104°35'50.1169"W	0.00	
4930.00†	21.177	321.064	4783.08	-601.87	662.22	-535.02	40°09'35.4336"N	104°35'50.4056"W	0.00	
5030.00†	21.177	321.064	4876.32	-627.41	690.32	-557.72	40°09'35.7135"N	104°35'50.6943"W	0.00	
5130.00†	21.177	321.064	4969.57	-652.95	718.42	-580.43	40°09'35.9935"N	104°35'50.9830"W	0.00	
5230.00†	21.177	321.064	5062.82	-678.49	746.52	-603.13	40°09'36.2734"N	104°35'51.2717"W	0.00	
5330.00†	21.177	321.064	5156.07	-704.03	774.61	-625.83	40°09'36.5534"N	104°35'51.5604"W	0.00	
5430.00†	21.177	321.064	5249.31	-729.57	802.71	-648.53	40°09'36.8333"N	104°35'51.8491"W	0.00	
5530.00†	21.177	321.064	5342.56	-755.11	830.81	-671.23	40°09'37.1133"N	104°35'52.1378"W	0.00	
5630.00†	21.177	321.064	5435.81	-780.65	858.91	-693.94	40°09'37.3932"N	104°35'52.4265"W	0.00	
5730.00†	21.177	321.064	5529.05	-806.18	887.01	-716.64	40°09'37.6732"N	104°35'52.7152"W	0.00	
5830.00†	21.177	321.064	5622.30	-831.72	915.11	-739.34	40°09'37.9531"N	104°35'53.0039"W	0.00	
5930.00†	21.177	321.064	5715.55	-857.26	943.21	-762.04	40°09'38.2331"N	104°35'53.2926"W	0.00	
6030.00†	21.177	321.064	5808.80	-882.80	971.31	-784.75	40°09'38.5130"N	104°35'53.5813"W	0.00	
6130.00†	21.177	321.064	5902.04	-908.34	999.41	-807.45	40°09'38.7930"N	104°35'53.8700"W	0.00	
6230.00†	21.177	321.064	5995.29	-933.88	1027.51	-830.15	40°09'39.0729"N	104°35'54.1587"W	0.00	
6330.00†	21.177	321.064	6088.54	-959.42	1055.61	-852.85	40°09'39.3529"N	104°35'54.4474"W	0.00	
6430.00†	21.177	321.064	6181.78	-984.96	1083.71	-875.55	40°09'39.6328"N	104°35'54.7361"W	0.00	
6458.86	21.177	321.064	6208.69	-992.33	1091.82	-882.11	40°09'39.7136"N	104°35'54.8194"W	0.00	KOP
6530.00†	16.817	306.530	6275.98	-1006.64	1107.95	-898.47	40°09'39.8747"N	104°35'55.0281"W	9.00	
6630.00†	13.639	273.891	6372.63	-1013.54	1117.39	-921.90	40°09'39.9702"N	104°35'55.3286"W	9.00	
6730.00†	15.752	238.806	6469.54	-1004.85	1111.14	-945.32	40°09'39.9109"N	104°35'55.6311"W	9.00	
6830.00†	21.660	217.263	6564.33	-980.79	1089.38	-968.16	40°09'39.6981"N	104°35'55.9280"W	9.00	
6930.00†	29.138	205.450	6654.66	-941.96	1052.63	-989.84	40°09'39.3372"N	104°35'56.2121"W	9.00	
7030.00†	37.250	198.278	6738.30	-889.30	1001.81	-1009.83	40°09'38.8370"N	104°35'56.4763"W	9.00	
7130.00†	45.657	193.402	6813.20	-824.12	938.15	-1027.65	40°09'38.2098"N	104°35'56.7140"W	9.00	
7230.00†	54.219	189.766	6877.52	-748.02	863.24	-1042.85	40°09'37.4710"N	104°35'56.9196"W	9.00	
7330.00†	62.868	186.845	6929.66	-662.87	778.91	-1055.06	40°09'36.6390"N	104°35'57.0879"W	9.00	
7430.00†	71.570	184.347	6968.35	-570.77	687.24	-1063.98	40°09'35.7340"N	104°35'57.2147"W	9.00	
7530.00†	80.301	182.092	6992.63	-474.00	590.49	-1069.38	40°09'34.7785"N	104°35'57.2970"W	9.00	
7630.00†	89.045	179.953	7001.91	-374.92	491.04	-1071.14	40°09'33.7960"N	104°35'57.3327"W	9.00	
7640.91	90.000	179.722	7002.00 <sup>1</sup>	-364.07	480.13	-1071.11	40°09'33.6881"N	104°35'57.3337"W	9.00	LP/TPZ
7730.00†	90.000	179.722	7002.00	-275.53	391.04	-1070.68	40°09'32.8078"N	104°35'57.3398"W	0.00	
7830.00†	90.000	179.722	7002.00	-176.14	291.04	-1070.20	40°09'31.8196"N	104°35'57.3467"W	0.00	
7930.00†	90.000	179.722	7002.00	-76.76	191.04	-1069.71	40°09'30.8314"N	104°35'57.3535"W	0.00	
8030.00†	90.000	179.722	7002.00	22.63	91.05	-1069.22	40°09'29.8432"N	104°35'57.3603"W	0.00	
8130.00†	90.000	179.722	7002.00	122.01	-8.95	-1068.74	40°09'28.8550"N	104°35'57.3671"W	0.00	
8230.00†	90.000	179.722	7002.00	221.40	-108.95	-1068.25	40°09'27.8668"N	104°35'57.3740"W	0.00	
8330.00†	90.000	179.722	7002.00	320.79	-208.95	-1067.77	40°09'26.8787"N	104°35'57.3808"W	0.00	
8430.00†	90.000	179.722	7002.00	420.17	-308.95	-1067.28	40°09'25.8905"N	104°35'57.3876"W	0.00	



Planned Wellpath Report  
PIONEER Y18-775 (REV-1.0) PWP  
Page 4 of 7



REFERENCE WELLPATH IDENTIFICATION			
Operator	NOBLE ENERGY, INC	Well	Pioneer Y18-775
Field	WELD COUNTY (NOBLE NAD 83 GRID)	API/Legal	
Facility	SEC.07-T02N-R64W	Wellbore	Pioneer Y18-775 PWB
Slot	SLOT#26 PIONEER Y18-775 (706'FNL & 2088'FWL,SEC.07)		

WELLPATH DATA (183 stations) † = interpolated, ‡ = extrapolated station										
MD [ft]	Inclination [°]	Azimuth [°]	TVD [ft]	Vert Sect [ft]	North [ft]	East [ft]	Latitude	Longitude	DLS [°/100ft]	Comments
8530.00†	90.000	179.722	7002.00	519.56	-408.95	-1066.80	40°09'24.9023"N	104°35'57.3944"W	0.00	
8630.00†	90.000	179.722	7002.00	618.94	-508.95	-1066.31	40°09'23.9141"N	104°35'57.4013"W	0.00	
8730.00†	90.000	179.722	7002.00	718.33	-608.95	-1065.82	40°09'22.9259"N	104°35'57.4081"W	0.00	
8830.00†	90.000	179.722	7002.00	817.71	-708.94	-1065.34	40°09'21.9377"N	104°35'57.4149"W	0.00	
8930.00†	90.000	179.722	7002.00	917.10	-808.94	-1064.85	40°09'20.9495"N	104°35'57.4217"W	0.00	
9030.00†	90.000	179.722	7002.00	1016.49	-908.94	-1064.37	40°09'19.9613"N	104°35'57.4286"W	0.00	
9130.00†	90.000	179.722	7002.00	1115.87	-1008.94	-1063.88	40°09'18.9731"N	104°35'57.4354"W	0.00	
9230.00†	90.000	179.722	7002.00	1215.26	-1108.94	-1063.40	40°09'17.9849"N	104°35'57.4422"W	0.00	
9330.00†	90.000	179.722	7002.00	1314.64	-1208.94	-1062.91	40°09'16.9967"N	104°35'57.4491"W	0.00	
9430.00†	90.000	179.722	7002.00	1414.03	-1308.94	-1062.42	40°09'16.0085"N	104°35'57.4559"W	0.00	
9530.00†	90.000	179.722	7002.00	1513.41	-1408.94	-1061.94	40°09'15.0204"N	104°35'57.4627"W	0.00	
9630.00†	90.000	179.722	7002.00	1612.80	-1508.94	-1061.45	40°09'14.0322"N	104°35'57.4695"W	0.00	
9730.00†	90.000	179.722	7002.00	1712.19	-1608.93	-1060.97	40°09'13.0440"N	104°35'57.4764"W	0.00	
9830.00†	90.000	179.722	7002.00	1811.57	-1708.93	-1060.48	40°09'12.0558"N	104°35'57.4832"W	0.00	
9930.00†	90.000	179.722	7002.00	1910.96	-1808.93	-1060.00	40°09'11.0676"N	104°35'57.4900"W	0.00	
10030.00†	90.000	179.722	7002.00	2010.34	-1908.93	-1059.51	40°09'10.0794"N	104°35'57.4968"W	0.00	
10130.00†	90.000	179.722	7002.00	2109.73	-2008.93	-1059.02	40°09'9.0912"N	104°35'57.5037"W	0.00	
10230.00†	90.000	179.722	7002.00	2209.12	-2108.93	-1058.54	40°09'8.1030"N	104°35'57.5105"W	0.00	
10330.00†	90.000	179.722	7002.00	2308.50	-2208.93	-1058.05	40°09'7.1148"N	104°35'57.5173"W	0.00	
10430.00†	90.000	179.722	7002.00	2407.89	-2308.93	-1057.57	40°09'6.1266"N	104°35'57.5241"W	0.00	
10530.00†	90.000	179.722	7002.00	2507.27	-2408.92	-1057.08	40°09'5.1384"N	104°35'57.5310"W	0.00	
10630.00†	90.000	179.722	7002.00	2606.66	-2508.92	-1056.60	40°09'4.1502"N	104°35'57.5378"W	0.00	
10730.00†	90.000	179.722	7002.00	2706.04	-2608.92	-1056.11	40°09'3.1620"N	104°35'57.5446"W	0.00	
10830.00†	90.000	179.722	7002.00	2805.43	-2708.92	-1055.62	40°09'2.1739"N	104°35'57.5514"W	0.00	
10930.00†	90.000	179.722	7002.00	2904.82	-2808.92	-1055.14	40°09'1.1857"N	104°35'57.5583"W	0.00	
11030.00†	90.000	179.722	7002.00	3004.20	-2908.92	-1054.65	40°09'0.1975"N	104°35'57.5651"W	0.00	
11130.00†	90.000	179.722	7002.00	3103.59	-3008.92	-1054.17	40°08'59.2093"N	104°35'57.5719"W	0.00	
11230.00†	90.000	179.722	7002.00	3202.97	-3108.92	-1053.68	40°08'58.2211"N	104°35'57.5787"W	0.00	
11330.00†	90.000	179.722	7002.00	3302.36	-3208.92	-1053.20	40°08'57.2329"N	104°35'57.5856"W	0.00	
11430.00†	90.000	179.722	7002.00	3401.74	-3308.91	-1052.71	40°08'56.2447"N	104°35'57.5924"W	0.00	
11530.00†	90.000	179.722	7002.00	3501.13	-3408.91	-1052.22	40°08'55.2565"N	104°35'57.5992"W	0.00	
11630.00†	90.000	179.722	7002.00	3600.52	-3508.91	-1051.74	40°08'54.2683"N	104°35'57.6060"W	0.00	
11730.00†	90.000	179.722	7002.00	3699.90	-3608.91	-1051.25	40°08'53.2801"N	104°35'57.6129"W	0.00	
11830.00†	90.000	179.722	7002.00	3799.29	-3708.91	-1050.77	40°08'52.2919"N	104°35'57.6197"W	0.00	
11930.00†	90.000	179.722	7002.00	3898.67	-3808.91	-1050.28	40°08'51.3037"N	104°35'57.6265"W	0.00	
12030.00†	90.000	179.722	7002.00	3998.06	-3908.91	-1049.80	40°08'50.3155"N	104°35'57.6333"W	0.00	
12130.00†	90.000	179.722	7002.00	4097.45	-4008.91	-1049.31	40°08'49.3274"N	104°35'57.6402"W	0.00	
12230.00†	90.000	179.722	7002.00	4196.83	-4108.90	-1048.82	40°08'48.3392"N	104°35'57.6470"W	0.00	
12330.00†	90.000	179.722	7002.00	4296.22	-4208.90	-1048.34	40°08'47.3510"N	104°35'57.6538"W	0.00	
12430.00†	90.000	179.722	7002.00	4395.60	-4308.90	-1047.85	40°08'46.3628"N	104°35'57.6606"W	0.00	
12530.00†	90.000	179.722	7002.00	4494.99	-4408.90	-1047.37	40°08'45.3746"N	104°35'57.6675"W	0.00	
12630.00†	90.000	179.722	7002.00	4594.37	-4508.90	-1046.88	40°08'44.3864"N	104°35'57.6743"W	0.00	
12730.00†	90.000	179.722	7002.00	4693.76	-4608.90	-1046.40	40°08'43.3982"N	104°35'57.6811"W	0.00	
12830.00†	90.000	179.722	7002.00	4793.15	-4708.90	-1045.91	40°08'42.4100"N	104°35'57.6879"W	0.00	
12930.00†	90.000	179.722	7002.00	4892.53	-4808.90	-1045.42	40°08'41.4218"N	104°35'57.6948"W	0.00	





Planned Wellpath Report  
PIONEER Y18-775 (REV-1.0) PWP  
Page 5 of 7



REFERENCE WELLPATH IDENTIFICATION			
Operator	NOBLE ENERGY, INC	Well	Pioneer Y18-775
Field	WELD COUNTY (NOBLE NAD 83 GRID)	API/Legal	
Facility	SEC.07-T02N-R64W	Wellbore	Pioneer Y18-775 PWB
Slot	SLOT#26 PIONEER Y18-775 (706'FNL & 2088'FWL,SEC.07)		

WELLPATH DATA (183 stations) † = interpolated, ‡ = extrapolated station										
MD [ft]	Inclination [°]	Azimuth [°]	TVD [ft]	Vert Sect [ft]	North [ft]	East [ft]	Latitude	Longitude	DLS [°/100ft]	Comments
13030.00†	90.000	179.722	7002.00	4991.92	-4908.90	-1044.94	40°08'40.4336"N	104°35'57.7016"W	0.00	
13130.00†	90.000	179.722	7002.00	5091.30	-5008.89	-1044.45	40°08'39.4454"N	104°35'57.7084"W	0.00	
13230.00†	90.000	179.722	7002.00	5190.69	-5108.89	-1043.97	40°08'38.4572"N	104°35'57.7152"W	0.00	
13330.00†	90.000	179.722	7002.00	5290.07	-5208.89	-1043.48	40°08'37.4690"N	104°35'57.7221"W	0.00	
13430.00†	90.000	179.722	7002.00	5389.46	-5308.89	-1043.00	40°08'36.4808"N	104°35'57.7289"W	0.00	
13530.00†	90.000	179.722	7002.00	5488.85	-5408.89	-1042.51	40°08'35.4926"N	104°35'57.7357"W	0.00	
13630.00†	90.000	179.722	7002.00	5588.23	-5508.89	-1042.02	40°08'34.5045"N	104°35'57.7425"W	0.00	
13730.00†	90.000	179.722	7002.00	5687.62	-5608.89	-1041.54	40°08'33.5163"N	104°35'57.7494"W	0.00	
13830.00†	90.000	179.722	7002.00	5787.00	-5708.89	-1041.05	40°08'32.5281"N	104°35'57.7562"W	0.00	
13930.00†	90.000	179.722	7002.00	5886.39	-5808.88	-1040.57	40°08'31.5399"N	104°35'57.7630"W	0.00	
14030.00†	90.000	179.722	7002.00	5985.77	-5908.88	-1040.08	40°08'30.5517"N	104°35'57.7698"W	0.00	
14130.00†	90.000	179.722	7002.00	6085.16	-6008.88	-1039.60	40°08'29.5635"N	104°35'57.7766"W	0.00	
14230.00†	90.000	179.722	7002.00	6184.55	-6108.88	-1039.11	40°08'28.5753"N	104°35'57.7835"W	0.00	
14330.00†	90.000	179.722	7002.00	6283.93	-6208.88	-1038.62	40°08'27.5871"N	104°35'57.7903"W	0.00	
14430.00†	90.000	179.722	7002.00	6383.32	-6308.88	-1038.14	40°08'26.5989"N	104°35'57.7971"W	0.00	
14530.00†	90.000	179.722	7002.00	6482.70	-6408.88	-1037.65	40°08'25.6107"N	104°35'57.8039"W	0.00	
14630.00†	90.000	179.722	7002.00	6582.09	-6508.88	-1037.17	40°08'24.6225"N	104°35'57.8108"W	0.00	
14730.00†	90.000	179.722	7002.00	6681.48	-6608.88	-1036.68	40°08'23.6343"N	104°35'57.8176"W	0.00	
14830.00†	90.000	179.722	7002.00	6780.86	-6708.87	-1036.20	40°08'22.6461"N	104°35'57.8244"W	0.00	
14930.00†	90.000	179.722	7002.00	6880.25	-6808.87	-1035.71	40°08'21.6579"N	104°35'57.8312"W	0.00	
15030.00†	90.000	179.722	7002.00	6979.63	-6908.87	-1035.22	40°08'20.6697"N	104°35'57.8381"W	0.00	
15130.00†	90.000	179.722	7002.00	7079.02	-7008.87	-1034.74	40°08'19.6815"N	104°35'57.8449"W	0.00	
15230.00†	90.000	179.722	7002.00	7178.40	-7108.87	-1034.25	40°08'18.6934"N	104°35'57.8517"W	0.00	
15330.00†	90.000	179.722	7002.00	7277.79	-7208.87	-1033.77	40°08'17.7052"N	104°35'57.8585"W	0.00	
15430.00†	90.000	179.722	7002.00	7377.18	-7308.87	-1033.28	40°08'16.7170"N	104°35'57.8654"W	0.00	
15530.00†	90.000	179.722	7002.00	7476.56	-7408.87	-1032.80	40°08'15.7288"N	104°35'57.8722"W	0.00	
15630.00†	90.000	179.722	7002.00	7575.95	-7508.86	-1032.31	40°08'14.7406"N	104°35'57.8790"W	0.00	
15730.00†	90.000	179.722	7002.00	7675.33	-7608.86	-1031.82	40°08'13.7524"N	104°35'57.8858"W	0.00	
15830.00†	90.000	179.722	7002.00	7774.72	-7708.86	-1031.34	40°08'12.7642"N	104°35'57.8926"W	0.00	
15930.00†	90.000	179.722	7002.00	7874.10	-7808.86	-1030.85	40°08'11.7760"N	104°35'57.8995"W	0.00	
16030.00†	90.000	179.722	7002.00	7973.49	-7908.86	-1030.37	40°08'10.7878"N	104°35'57.9063"W	0.00	
16130.00†	90.000	179.722	7002.00	8072.88	-8008.86	-1029.88	40°08'9.7996"N	104°35'57.9131"W	0.00	
16230.00†	90.000	179.722	7002.00	8172.26	-8108.86	-1029.40	40°08'8.8114"N	104°35'57.9199"W	0.00	
16330.00†	90.000	179.722	7002.00	8271.65	-8208.86	-1028.91	40°08'7.8232"N	104°35'57.9268"W	0.00	
16430.00†	90.000	179.722	7002.00	8371.03	-8308.86	-1028.42	40°08'6.8350"N	104°35'57.9336"W	0.00	
16530.00†	90.000	179.722	7002.00	8470.42	-8408.85	-1027.94	40°08'5.8468"N	104°35'57.9404"W	0.00	
16630.00†	90.000	179.722	7002.00	8569.81	-8508.85	-1027.45	40°08'4.8586"N	104°35'57.9472"W	0.00	
16730.00†	90.000	179.722	7002.00	8669.19	-8608.85	-1026.97	40°08'3.8704"N	104°35'57.9540"W	0.00	
16830.00†	90.000	179.722	7002.00	8768.58	-8708.85	-1026.48	40°08'2.8822"N	104°35'57.9609"W	0.00	
16930.00†	90.000	179.722	7002.00	8867.96	-8808.85	-1026.00	40°08'1.8940"N	104°35'57.9677"W	0.00	
17030.00†	90.000	179.722	7002.00	8967.35	-8908.85	-1025.51	40°08'0.9059"N	104°35'57.9745"W	0.00	
17130.00†	90.000	179.722	7002.00	9066.73	-9008.85	-1025.02	40°07'59.9177"N	104°35'57.9813"W	0.00	
17230.00†	90.000	179.722	7002.00	9166.12	-9108.85	-1024.54	40°07'58.9295"N	104°35'57.9882"W	0.00	
17330.00†	90.000	179.722	7002.00	9265.51	-9208.84	-1024.05	40°07'57.9413"N	104°35'57.9950"W	0.00	
17430.00†	90.000	179.722	7002.00	9364.89	-9308.84	-1023.57	40°07'56.9531"N	104°35'58.0018"W	0.00	



Planned Wellpath Report

PIONEER Y18-775 (REV-1.0) PWP

Page 6 of 7



REFERENCE WELLPATH IDENTIFICATION			
Operator	NOBLE ENERGY, INC	Well	Pioneer Y18-775
Field	WELD COUNTY (NOBLE NAD 83 GRID)	API/Legal	
Facility	SEC.07-T02N-R64W	Wellbore	Pioneer Y18-775 PWB
Slot	SLOT#26 PIONEER Y18-775 (706'FNL & 2088'FWL,SEC.07)		

WELLPATH DATA (183 stations) † = interpolated, ‡ = extrapolated station										
MD [ft]	Inclination [°]	Azimuth [°]	TVD [ft]	Vert Sect [ft]	North [ft]	East [ft]	Latitude		Longitude	
17530.00†	90.000	179.722	7002.00	9464.28	-9408.84	-1023.08	40°07'55.9649"N		104°35'58.0086"W	
17630.00†	90.000	179.722	7002.00	9563.66	-9508.84	-1022.60	40°07'54.9767"N		104°35'58.0154"W	
17724.67	90.000	179.722	7002.00‡	9657.76	-9603.51	-1022.14	40°07'54.0411"N		104°35'58.0219"W	
									0.00	
									0.00	
									0.00	
									BHL	

HOLE & CASING SECTIONS - Ref Wellbore: Pioneer Y18-775 PWB    Ref Wellpath: PIONEER Y18-775 (REV-1.0) PWP									
String/Diameter	Start MD [ft]	End MD [ft]	Interval [ft]	Start TVD [ft]	End TVD [ft]	Start N/S [ft]	Start E/W [ft]	End N/S [ft]	End E/W [ft]
9.625in Casing Surface	30.00	1950.00	1920.00	30.00	1950.00	0.00	0.00	0.00	0.00

TARGETS									
Name	MD [ft]	TVD [ft]	North [ft]	East [ft]	Grid East [US ft]	Grid North [US ft]	Latitude	Longitude	Shape
PIONEER Y18-785 SECTION 18	N/A	0.00	21.39	-46.34	3252776.45	1301717.15	40°09'29.0520"N	104°35'44.1960"W	polygon
	2D Polygon: dimensions not calculated								
PIONEER Y18-785 SECTION 7	N/A	0.00	21.39	-46.34	3252776.45	1301717.15	40°09'29.0520"N	104°35'44.1960"W	polygon
	2D Polygon: dimensions not calculated								
2) PIONEER Y18-775 BHL PLAN (200'FSL & 977'FWL,SEC.18)	17724.67	7002.00	-9603.51	-1022.14	3251800.70	1292092.68	40°07'54.0411"N	104°35'58.0219"W	point
1) PIONEER Y18-775 LP PLAN (200'FNL & 1021'FWL,SEC.07)	7640.91	7002.00	480.13	-1071.11	3251751.73	1302175.87	40°09'33.6881"N	104°35'57.3337"W	point
SECTION LINES - SEC.06-T02N-R64W	N/A	7998.00	5934.02	-2140.73	3250682.16	1307629.53	40°10'27.6881"N	104°36'10.3986"W	polygon
	2D Polygon: dimensions not calculated								

SURVEY PROGRAM - Ref Wellbore: Pioneer Y18-775 PWB    Ref Wellpath: PIONEER Y18-775 (REV-1.0) PWP				
Start MD [ft]	End MD [ft]	Positional Uncertainty Model		
30.00	1950.00	Gyrodata 2015 - GC+DROP+COND		
1950.00	17735.22	OWSG MWD rev2 (MS+IFR1)		
				Log Name/Comment
				Pioneer Y18-775 PWB
				Pioneer Y18-775 PWB



Planned Wellpath Report

PIONEER Y18-775 (REV-1.0) PWP

Page 7 of 7



REFERENCE WELLPATH IDENTIFICATION			
Operator	NOBLE ENERGY, INC	Well	Pioneer Y18-775
Field	WELD COUNTY (NOBLE NAD 83 GRID)	API/Legal	
Facility	SEC.07-T02N-R64W	Wellbore	Pioneer Y18-775 PWB
Slot	SLOT#26 PIONEER Y18-775 (706'FNL & 2088'FWL,SEC.07)		

DESIGN COMMENTS				
MD [ft]	Inclination [°]	Azimuth [°]	TVD [ft]	Comment
30.00	0.000	321.064	30.00	SHL
2050.00	0.000	321.064	2050.00	End of Tangent
3108.83	21.177	321.064	3084.88	Build (XS)
6458.86	21.177	321.064	6208.69	KOP
7640.91	90.000	179.722	7002.00	LP/TPZ
17724.67	90.000	179.722	7002.00	BHL





Closest Approach Clearance Summary Report

PIONEER Y18-775 (REV-1.0) PWP - SPE WPTS Stop Drilling HSE Risk (2017)

Page 1 of 4



REFERENCE WELLPATH IDENTIFICATION			
Operator	NOBLE ENERGY, INC	Well	Pioneer Y18-775
Field	WELD COUNTY (NOBLE NAD 83 GRID)	API/Legal	
Facility	SEC.07-T02N-R64W	Wellbore	Pioneer Y18-775 PWB
Slot	SLOT#26 PIONEER Y18-775 (706'FNL & 2088'FWL,SEC.07)		

REPORT SETUP INFORMATION			
Projection System	NAD83 / Lambert Colorado SP, Northern Zone (501), US feet	Software System	WellArchitect® 6.0
North Reference	Grid	User	Guenaler
Scale	0.999958	Report Generated	5/23/2022 at 10:08:46 AM
Convergence at slot	0.58° East	Database	WA_Denver

WELLPATH LOCATION						
	Local coordinates		Grid coordinates		Geographic coordinates	
	North[ft]	East[ft]	Easting[US ft]	Northing[US ft]	Latitude	Longitude
Slot Location	-23.83	163.77	3252822.79	1301695.77	40°09'28.8360"N	104°35'43.6020"W
Facility Reference Pt			3252659.03	1301719.60	40°09'29.0880"N	104°35'45.7080"W
Field Reference Pt			3000000.00	4454105.15	48°46'34.3150"N	105°30'0.0000"W

WELLPATH DATUM			
Calculation method	Minimum Curvature	(4885'GL+30'KB@4915'RKB) (RKB) to Facility Vertical Datum	4915.00ft
Horizontal Reference Pt	Slot	(4885'GL+30'KB@4915'RKB) (RKB) to Mean Sea Level	4915.00ft
Vertical Reference Pt	(4885'GL+30'KB@4915'RKB) (RKB)	(4885'GL+30'KB@4915'RKB) (RKB) to Mud Line at Slot (SLOT#26 PIONEER Y18-775 (706'FNL & 2088'FWL,SEC.07))	4915.00ft
MD Reference Pt	(4885'GL+30'KB@4915'RKB) (RKB)		
Field Vertical Reference	Mean Sea Level		

POSITIONAL UNCERTAINTY CALCULATION SETTINGS					
Ellipse Confidence Limit	3.50 Std Dev	Ellipse Start MD	30.00ft	Surface Position Uncertainty	included
Declination	7.73° East of TN	Dip Angle	66.45°	Mag Field Strength	51798 nT
Slot Surface Uncertainty @1SD		Horizontal	0.100ft	Vertical	1.000ft
Facility Surface Uncertainty @1SD		Horizontal	8.200ft	Vertical	3.000ft
Positional Uncertainty values in the WELLPATH DATA table are the projection of the ellipsoid of uncertainty onto the vertical and horizontal planes					



Closest Approach Clearance Summary Report

PIONEER Y18-775 (REV-1.0) PWP - SPE WPTS Stop Drilling HSE Risk (2017)

Page 2 of 4



REFERENCE WELLPATH IDENTIFICATION			
Operator	NOBLE ENERGY, INC	Well	Pioneer Y18-775
Field	WELD COUNTY (NOBLE NAD 83 GRID)	API/Legal	
Facility	SEC.07-T02N-R64W	Wellbore	Pioneer Y18-775 PWB
Slot	SLOT#26 PIONEER Y18-775 (706'FNL & 2088'FWL,SEC.07)		

PROXIMITY-SCAN RULE			
Rule Name	SPE WPTS Stop Drilling HSE Risk (2017)	Rule Based On	Ratio
Plane of Rule	Closest Approach	Threshold Value	1.00
Include Casing & Hole Size	yes	Apply Cone of Safety	no

HOLE & CASING SECTIONS - Ref Wellbore: Pioneer Y18-775 PWB      Ref Wellpath: PIONEER Y18-775 (REV-1.0) PWP									
String/Diameter	Start MD [ft]	End MD [ft]	Interval [ft]	Start TVD [ft]	End TVD [ft]	Start N/S [ft]	Start E/W [ft]	End N/S [ft]	End E/W [ft]
9.625in Casing Surface	30.00	1950.00	1920.00	30.00	1950.00	0.00	0.00	0.00	0.00

SURVEY PROGRAM - Ref Wellbore: Pioneer Y18-775 PWB      Ref Wellpath: PIONEER Y18-775 (REV-1.0) PWP				
Start MD [ft]	End MD [ft]	Positional Uncertainty Model	Log Name/Comment	Wellbore
30.00	1950.00	Gyrodatta 2015 - GC+DROP+COND		Pioneer Y18-775 PWB
1950.00	17735.22	OWSG MWD rev2 (MS+IFR1)		Pioneer Y18-775 PWB



Closest Approach Clearance Summary Report

PIONEER Y18-775 (REV-1.0) PWP - SPE WPTS Stop Drilling HSE Risk (2017)

Page 3 of 4



REFERENCE WELLPATH IDENTIFICATION			
Operator	NOBLE ENERGY, INC	Well	Pioneer Y18-775
Field	WELD COUNTY (NOBLE NAD 83 GRID)	API/Legal	
Facility	SEC.07-T02N-R64W	Wellbore	Pioneer Y18-775 PWB
Slot	SLOT#26 PIONEER Y18-775 (706'FNL & 2088'FWL,SEC.07)		

CALCULATION RANGE & CUTOFF		
From: 30.00ft MD	To: 17724.67ft MD	C-C Cutoff: (none)

OFFSET WELL CLEARANCE SUMMARY (32 Offset Wellpaths selected) Ratios are calculated in Closest Approach plane												
Offset Facility	Offset Slot	Offset Well	Offset Wellbore	Offset Wellpath	Wellbore Status	C-C Clearance Distance			Rule Separation Ratio			
						Ref MD [ft]	Min C-C Clear Dist [ft]	Diverging from MD [ft]	Ref MD of Min Ratio [ft]	Min Ratio	Min Ratio Dvrg from [ft]	Rule Status
Y Section 18	(Charles R Milliken Unit 1 (PR))	Charles R Milliken Unit 1 (PR)	Wellbore #1	Wellbore #1\Gyro Surveys	Drilling	16441.64	11.45	16441.64	16439.68	0.04	16439.68	FAIL
SEC.07-T02N-R64W	SLOT#08 Harkis 1-7 (PA)	Harkis 1-7 (PA)	Harkis 1-7 (PA) AWB	Harkis 1-7 (PA) AWP	Drilling	8852.33	11.10	8852.33	8851.96	0.15	8851.96	FAIL
SEC.07-T02N-R64W	SLOT#29 UPRR 53 PAN AM E 1 (PA)	UPRR 53 PAN AM E 1 (PA)	UPRR 53 PAN AM E 1 (PA) AWB	UPRR 53 PAN AM E 1 (PA) AWP	Drilling	11338.40	45.98	11338.40	11335.64	0.60	11335.64	FAIL
SEC.07-T02N-R64W	SLOT#25 PIONEER Y18-770 (684'FNL & 2088'FWL,SEC.07)	PIONEER Y18-770	PIONEER Y18-770 PWB	PIONEER Y18-770 (REV-1.0) PWP	Planned	2403.27	15.48	2403.27	2407.00	0.63	17724.67	FAIL
SEC.07-T02N-R64W	SLOT#27 PIONEER Y18-785 (729'FNL & 2088'FWL,SEC.07)	Pioneer Y18-785	Pioneer Y18-785 PWB	PIONEER Y18-785 (REV-1.0) PWP_AC	Planned	30.00	22.22	4730.00	2051.59	1.02	17724.67	WARN
Y Section 18	(ADA Harkins Unit A1 (PA))	ADA Harkins Unit A1 (PA)	Wellbore #1	Wellbore #1\Gyro Surveys	Drilling	13970.34	182.94	13970.34	13974.65	1.45	13974.65	PASS
SEC.07-T02N-R64W	SLOT#24 PIONEER Y18-766 (661'FNL & 2088'FWL,SEC.07)	Pioneer Y18-766	Pioneer Y18-766 PWB	Pioneer Y18-766 (REV-1.0) PWP	Planned	2461.49	36.37	2461.49	2475.47	1.77	17724.67	PASS
SEC.07-T02N-R64W	SLOT#02 PIONEER D31-775 (680'FNL & 1946'FWL, SEC.07)	PIONEER D31-775	PIONEER D31-775 AWB	PIONEER D31-775 AWP	Drilling	2386.77	130.33	7413.53	7413.53	2.98	7413.53	PASS
SEC.07-T02N-R64W	SLOT#03 PIONEER D31-756 (681'FNL & 1991'FWL,SEC.07)	PIONEER D31-756	PIONEER D31-756 AWB	PIONEER D31-756 AWP	Drilling	2709.30	60.79	7230.00	2720.04	3.15	7230.00	PASS
SEC.07-T02N-R64W	SLOT#23 PIONEER Y18-756 (639'FNL & 2089'FWL,SEC.07)	Pioneer Y18-756	Pioneer Y18-756 PWB	PIONEER Y18-756 (REV-1.0) PWP	Planned	2255.57	66.19	8030.00	2279.15	3.44	17724.67	PASS
SEC.07-T02N-R64W	SLOT#09 Harkis 11-7 (PA)	Harkis 11-7 (PA)	Harkis 11-7 (PA) AWB	Harkis 11-7 (PA) AWP	Drilling	8075.13	379.73	8075.13	8093.30	8.46	8093.30	PASS
SEC.07-T02N-R64W	SLOT#22 PIONEER Y18-744 (658'FNL & 2240'FEL,SEC.07)	Pioneer Y18-744	Pioneer Y18-744 PWB	Pioneer Y18-744 (REV-1.0) PWP	Planned	30.00	765.39	7930.00	17724.67	8.86	17724.67	PASS
SEC.07-T02N-R64W	SLOT#01 PIONEER D31-785 (680'FNL & 1923'FWL, SEC.07)	PIONEER D31-785	PIONEER D31-785 AWB	PIONEER D31-785 AWP	Drilling	2362.38	162.86	7830.00	2410.13	8.96	7830.00	PASS
SEC.07-T02N-R64W	SLOT#21 PIONEER Y18-735 (681'FNL & 2240'FEL,SEC.07)	Pioneer Y18-735	Pioneer Y18-735 PWB	Pioneer Y18-735 (REV-1.0) PWP	Planned	30.00	763.69	8030.00	17724.67	11.82	17724.67	PASS
Y Section 18	(HSR Harkis 15-18 (PR))	HSR Harkis 15-18 (PR)	Wellbore #1	Wellbore #1\As-Drilled	Drilling	16575.02	2619.74	16575.02	16104.59	12.71	16104.59	PASS
SEC.07-T02N-R64W	SLOT#20 PIONEER Y18-730 (703'FNL & 2239'FEL,SEC.07)	Pioneer Y18-730	Pioneer Y18-730 PWB	PIONEER Y18-730 (REV-1.0) PWP	Planned	30.00	762.94	2050.00	17724.67	13.35	17724.67	PASS
Y Section 18	(Lyle V Cooksey Gas Unit 1 (PR))	Lyle V Cooksey Gas Unit 1 (PR)	Wellbore #1	Wellbore #1\Gyro Surveys	Drilling	14355.98	3035.81	14355.98	15424.79	14.35	15424.79	PASS
SEC.07-T02N-R64W	SLOT#19 PIONEER Y18-725 (726'FNL & 2239'FEL,SEC.07)	PIONEER Y18-725	PIONEER Y18-725 PWB	PIONEER Y18-725 (REV-1.0) PWP	Planned	30.00	762.56	8130.00	17724.67	14.78	17724.67	PASS
SEC.07-T02N-R64W	SLOT#18 PIONEER Y18-715 (748'FNL & 2239'FEL,SEC.07)	Pioneer Y18-715	Pioneer Y18-715 PWB	PIONEER Y18-715 (REV-1.0) PWP	Planned	30.00	762.86	2050.00	17724.67	17.63	17724.67	PASS
SEC.07-T02N-R64W	SLOT#15 Pioneer 22-7 (SI)	Pioneer 22-7 (SI)	Pioneer 22-7 (SI) AWB	Pioneer 22-7 (SI) AWP	Drilling	9592.99	1022.27	9592.99	9649.19	19.12	9649.19	PASS
SEC.07-T02N-R64W	SLOT#10 HP Farms Y 7-15JI (PR)	HP Farms Y 7-15JI (PR)	HP Farms Y 7-15JI (PR) AWB	HP Farms Y 7-15JI (PR) AWP	Drilling	11984.51	1803.75	11984.51	12173.80	23.22	12173.80	PASS
SEC.07-T02N-R64W	SLOT#12 HP Y07-10D (PA)	HP Y07-10D (PA)	HP Y07-10D (PA) AWB	HP Y07-10D (PA) AWP	Drilling	10574.29	1971.05	10574.29	10855.40	30.44	10855.40	PASS
SEC.07-T02N-R64W	SLOT#05 PIONEER D31-744 (706'FNL & 2142'FEL, SEC.07)	PIONEER D31-744	PIONEER D31-744 AWB	PIONEER D31-744 AWP	Drilling	1698.88	854.69	6830.00	6966.95	34.23	6966.95	PASS
SEC.07-T02N-R64W	SLOT#28 UPRC 7-10Q (PR)	UPRC 7-10Q (PR)	UPRC 7-10Q (PR) AWB	UPRC 7-10Q (PR) AWP	Drilling	11242.74	2493.57	11242.74	11734.72	35.34	11734.72	PASS
SEC.07-T02N-R64W	SLOT#16 Pioneer USX Y07-08D (PR)	Pioneer USX Y07-08D (PR)	Pioneer USX Y07-08D (PR) AWB	Pioneer USX Y07-08D (PR) AWP	Drilling	2715.48	3193.16	9430.00	9891.43	37.58	9891.43	PASS



Closest Approach Clearance Summary Report

PIONEER Y18-775 (REV-1.0) PWP - SPE WPTS Stop Drilling HSE Risk (2017)

Page 4 of 4



REFERENCE WELLPATH IDENTIFICATION			
Operator	NOBLE ENERGY, INC	Well	Pioneer Y18-775
Field	WELD COUNTY (NOBLE NAD 83 GRID)	API/Legal	
Facility	SEC.07-T02N-R64W	Wellbore	Pioneer Y18-775 PWB
Slot	SLOT#26 PIONEER Y18-775 (706'FNL & 2088'FWL,SEC.07)		

CALCULATION RANGE & CUTOFF		
From: 30.00ft MD	To: 17724.67ft MD	C-C Cutoff: (none)

OFFSET WELL CLEARANCE SUMMARY (32 Offset Wellpaths selected) Ratios are calculated in Closest Approach plane												
Offset Facility	Offset Slot	Offset Well	Offset Wellbore	Offset Wellpath	Wellbore Status	C-C Clearance Distance			Rule Separation Ratio			
						Ref MD [ft]	Min C-C Clear Dist [ft]	Diverging from MD [ft]	Ref MD of Min Ratio [ft]	Min Ratio	Min Ratio Dvrg from [ft]	Rule Status
SEC.07-T02N-R64W	SLOT#17 Pioneer Y07-07D (PA)	Pioneer Y07-07D (PA)	Pioneer Y07-07D (PA) AWB	Pioneer Y07-07D (PA) AWP	Drilling	9256.55	2091.89	9256.55	9502.80	39.06	9502.80	PASS
SEC.07-T02N-R64W	SLOT#13 Perkins 31-7 (SI)	Perkins 31-7 (SI)	Perkins 31-7 (SI) AWB	Perkins 31-7 (SI) AWP	Drilling	30.00	1037.68	8030.00	8309.54	47.33	8309.54	PASS
SEC.07-T02N-R64W	SLOT#06 PIONEER D31-735 (706'FNL & 2219'FEL, SEC.07)	PIONEER D31-735	PIONEER D31-735 AWB	PIONEER D31-735 AWP	Drilling	2054.91	876.34	7830.00	7391.13	48.95	7830.00	PASS
SEC.07-T02N-R64W	SLOT#07 PIONEER D31-725 (707'FNL & 2097'FEL, SEC.07)	PIONEER D31-725	PIONEER D31-725 AWB	PIONEER D31-725 AWP	Drilling	1860.84	896.49	7830.00	2245.19	50.43	8030.00	PASS
SEC.07-T02N-R64W	SLOT#04 PIONEER D31-716 (707'FNL & 2074'FEL, SEC.07)	PIONEER D31-716	PIONEER D31-716 AWB	PIONEER D31-716 AWP	Drilling	2011.50	924.15	7830.00	2212.09	51.99	9230.00	PASS
SEC.07-T02N-R64W	SLOT#11 HP Y07-09 (PR)	HP Y07-09 (PR)	HP Y07-09 (PR) AWB	HP Y07-09 (PR) AWP	Drilling	10658.56	3487.78	10658.56	11761.51	52.33	11761.51	PASS
SEC.07-T02N-R64W	SLOT#14 Perkins USX Y 7-17 (SI)	Perkins USX Y 7-17 (SI)	Perkins USX Y 7-17 (SI) AWB	Perkins USX Y 7-17 (SI) AWP	Drilling	2099.37	1766.43	8630.00	9381.14	58.78	9381.14	PASS