

NOBLE ENERGY, INC



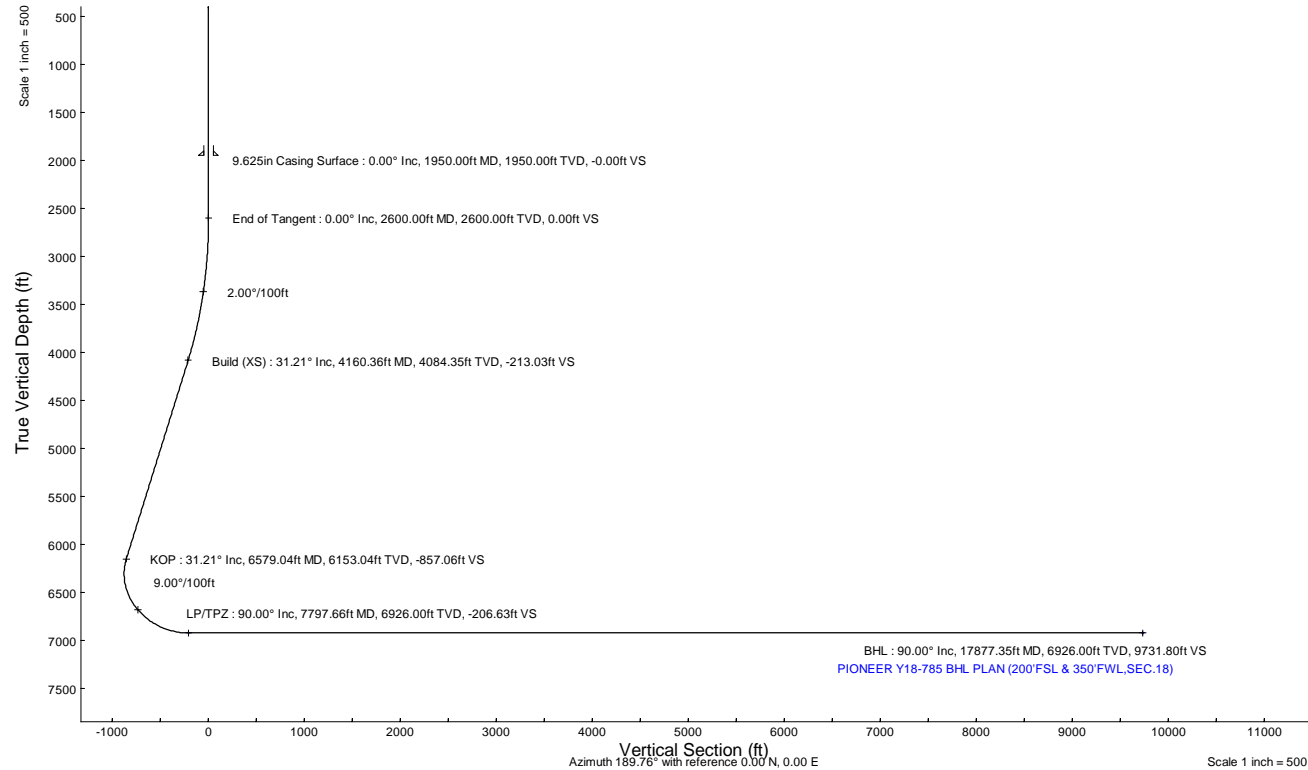
Location:	COLORADO	Slot:	SLOT#27 PIONEER Y18-785 (729°FNL & 2088°FWL, SEC.07)
Field:	WELD COUNTY (NOBLE NAD 83 GRID)	Well:	Pioneer Y18-785
Facility:	SEC.07-T02N-R64W	Wellbore:	Pioneer Y18-785 PWB

Plot reference wellpath is PIONEER Y18-785 (REV-1.0) PWP	Grid System: NAD83 / Lambert Colorado SP, Northern Zone (501), US feet
True vertical depths are referenced to (4886GL+30KB@4916RKB) (RKB)	North Reference: Grid north
Reference wellpath measured depths are referenced to (4886GL+30KB@4916RKB) (RKB)	Scale: True distance
(4886GL+30KB@4916RKB) (RKB) to Mean Sea Level: 4916 feet	Coordinates are in feet referenced to Slot
Mean Sea Level to Mud line (At Slot: SLOT#27 PIONEER Y18-785 (729°FNL & 2088°FWL, SEC.07)): 0 feet	Depths are in feet
Offset wellpath MDs are referenced to each path's default MD datum	Created by: gusarator on 2022-05-23; Database: WA_Denver

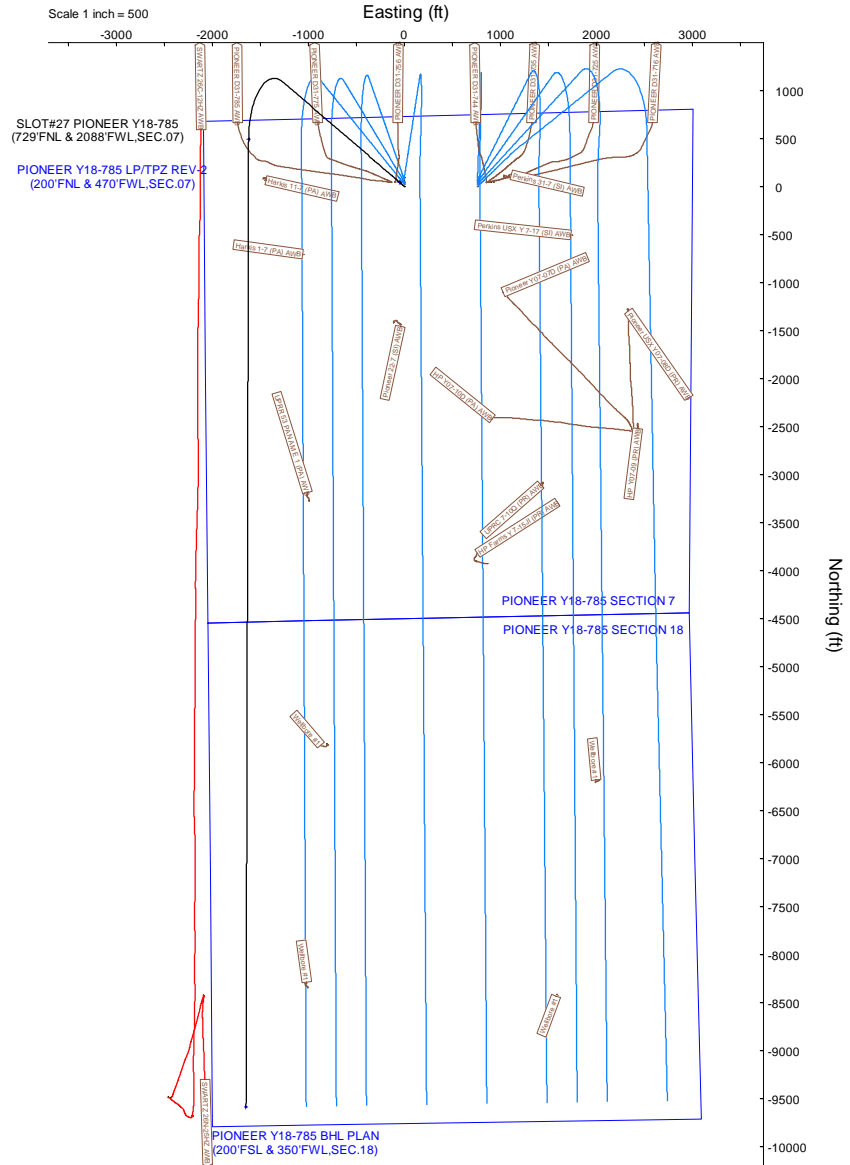
Location Information						
Facility Name			Grid East (US ft)	Grid North (US ft)	Latitude	Longitude
SEC.07-T02N-R64W			3252658.032	1301719.599	40°09'29.0880"N	104°35'45.7080"W
Slot			Local N (ft)	Local E (ft)	Grid East (US ft)	Grid North (US ft)
SLOT#27 PIONEER Y18-785 (729°FNL & 2088°FWL, SEC.07)			-46.06	163.72	3252822.741	1301673.545
(4886GL+30KB@4916RKB) (RKB) to Mud line (At Slot: SLOT#27 PIONEER Y18-785 (729°FNL & 2088°FWL, SEC.07))					4916ft	
Mean Sea Level to Mud line (At Slot: SLOT#27 PIONEER Y18-785 (729°FNL & 2088°FWL, SEC.07))					0ft	
(4886GL+30KB@4916RKB) (RKB) to Mean Sea Level					4916ft	

Targets						
Name	MD (ft)	TVD (ft)	Local N (ft)	Local E (ft)	Grid East (US ft)	Grid North (US ft)
PIONEER Y18-785 SECTION 18	N/A	1.00	43.61	-46.29	3252776.45	1301717.15
PIONEER Y18-785 SECTION 7	N/A	1.00	43.61	-46.29	3252776.45	1301717.15
PIONEER Y18-785 BHL PLAN (200°FSL & 350°FWL, SEC.18)	17877.35	6926.00	-9591.06	-1649.09	3251173.72	1292082.90
PIONEER Y18-785 LP/TPZ REV-2 (200°FNL & 470°FWL, SEC.07)	7797.66	6926.00	488.59	-1622.26	3251200.56	1302162.12

Bottom Hole Location						
MD (ft)	Inc (°)	Az (°)	TVD (ft)	Local N (ft)	Local E (ft)	Grid East (US ft)
17877.35	90.000	180.153	6926.00	-9591.06	-1649.09	3251173.72
						Grid North (US ft)
						1292082.90
						Latitude
						40°07'54.0074"N
						Longitude
						104°36'6.0951"W



Well Profile Data							
Design Comment	MD (ft)	Inc (°)	Az (°)	TVD (ft)	Local N (ft)	Local E (ft)	DLS (°/100ft)
SHL	30.00	0.000	310.680	30.00	0.00	0.00	0.00
End of Tangent	2600.00	0.000	310.680	2600.00	0.00	0.00	0.00
Build (XS)	4160.36	31.207	310.680	4084.35	270.21	-314.37	2.00
KOP	6579.04	31.207	310.680	6153.04	1087.09	-1264.75	0.00
LP/TPZ	7797.66	90.000	180.153	6926.00	488.59	-1622.26	9.00
BHL	17877.35	90.000	180.153	6926.00	-9591.06	-1649.09	0.00
							VS (ft)
							-213.03
							-857.06
							-206.63
							9731.80





Planned Wellpath Report

PIONEER Y18-785 (REV-1.0) PWP

Page 1 of 7



REFERENCE WELLPATH IDENTIFICATION			
Operator	NOBLE ENERGY, INC	Well	Pioneer Y18-785
Field	WELD COUNTY (NOBLE NAD 83 GRID)	API/Legal	
Facility	SEC.07-T02N-R64W	Wellbore	Pioneer Y18-785 PWB
Slot	SLOT#27 PIONEER Y18-785 (729'FNL & 2088'FWL,SEC.07)		

REPORT SETUP INFORMATION			
Projection System	NAD83 / Lambert Colorado SP, Northern Zone (501), US feet	Software System	WellArchitect® 6.0
North Reference	Grid	User	Guenaler
Scale	0.999958	Report Generated	5/23/2022 at 10:14:07 AM
Convergence at slot	0.58° East	Database	WA_Denver

WELLPATH LOCATION						
	Local coordinates		Grid coordinates		Geographic coordinates	
	North[ft]	East[ft]	Easting[US ft]	Northing[US ft]	Latitude	Longitude
Slot Location	-46.06	163.72	3252822.74	1301673.55	40°09'28.6164"N	104°35'43.6056"W
Facility Reference Pt			3252659.03	1301719.60	40°09'29.0880"N	104°35'45.7080"W
Field Reference Pt			3000000.00	4454105.15	48°46'34.3150"N	105°30'0.0000"W

WELLPATH DATUM			
Calculation method	Minimum curvature	(4886'GL+30'KB@4916'RKB) (RKB) to Facility Vertical Datum	4916.00ft
Horizontal Reference Pt	Slot	(4886'GL+30'KB@4916'RKB) (RKB) to Mean Sea Level	4916.00ft
Vertical Reference Pt	(4886'GL+30'KB@4916'RKB) (RKB)	(4886'GL+30'KB@4916'RKB) (RKB) to Mud Line at Slot (SLOT#27 PIONEER Y18-785 (729'FNL & 2088'FWL,SEC.07))	4916.00ft
MD Reference Pt	(4886'GL+30'KB@4916'RKB) (RKB)	Section Origin	N 0.00, E 0.00 ft
Field Vertical Reference	Mean Sea Level	Section Azimuth	189.76°



Planned Wellpath Report
PIONEER Y18-785 (REV-1.0) PWP
Page 2 of 7



REFERENCE WELLPATH IDENTIFICATION			
Operator	NOBLE ENERGY, INC	Well	Pioneer Y18-785
Field	WELD COUNTY (NOBLE NAD 83 GRID)	API/Legal	
Facility	SEC.07-T02N-R64W	Wellbore	Pioneer Y18-785 PWB
Slot	SLOT#27 PIONEER Y18-785 (729'FNL & 2088'FWL,SEC.07)		

WELLPATH DATA (185 stations) † = interpolated, ‡ = extrapolated station										
MD [ft]	Inclination [°]	Azimuth [°]	TVD [ft]	Vert Sect [ft]	North [ft]	East [ft]	Latitude	Longitude	DLS [°/100ft]	Comments
0.00†	0.000	310.680	0.00	0.00	0.00	0.00	40°09'28.6164"N	104°35'43.6056"W	0.00	
30.00	0.000	310.680	30.00	0.00	0.00	0.00	40°09'28.6164"N	104°35'43.6056"W	0.00	SHL
130.00†	0.000	310.680	130.00	0.00	0.00	0.00	40°09'28.6164"N	104°35'43.6056"W	0.00	
230.00†	0.000	310.680	230.00	0.00	0.00	0.00	40°09'28.6164"N	104°35'43.6056"W	0.00	
330.00†	0.000	310.680	330.00	0.00	0.00	0.00	40°09'28.6164"N	104°35'43.6056"W	0.00	
430.00†	0.000	310.680	430.00	0.00	0.00	0.00	40°09'28.6164"N	104°35'43.6056"W	0.00	
530.00†	0.000	310.680	530.00	0.00	0.00	0.00	40°09'28.6164"N	104°35'43.6056"W	0.00	
630.00†	0.000	310.680	630.00	0.00	0.00	0.00	40°09'28.6164"N	104°35'43.6056"W	0.00	
730.00†	0.000	310.680	730.00	0.00	0.00	0.00	40°09'28.6164"N	104°35'43.6056"W	0.00	
830.00†	0.000	310.680	830.00	0.00	0.00	0.00	40°09'28.6164"N	104°35'43.6056"W	0.00	
930.00†	0.000	310.680	930.00	0.00	0.00	0.00	40°09'28.6164"N	104°35'43.6056"W	0.00	
1030.00†	0.000	310.680	1030.00	0.00	0.00	0.00	40°09'28.6164"N	104°35'43.6056"W	0.00	
1130.00†	0.000	310.680	1130.00	0.00	0.00	0.00	40°09'28.6164"N	104°35'43.6056"W	0.00	
1230.00†	0.000	310.680	1230.00	0.00	0.00	0.00	40°09'28.6164"N	104°35'43.6056"W	0.00	
1330.00†	0.000	310.680	1330.00	0.00	0.00	0.00	40°09'28.6164"N	104°35'43.6056"W	0.00	
1430.00†	0.000	310.680	1430.00	0.00	0.00	0.00	40°09'28.6164"N	104°35'43.6056"W	0.00	
1530.00†	0.000	310.680	1530.00	0.00	0.00	0.00	40°09'28.6164"N	104°35'43.6056"W	0.00	
1630.00†	0.000	310.680	1630.00	0.00	0.00	0.00	40°09'28.6164"N	104°35'43.6056"W	0.00	
1730.00†	0.000	310.680	1730.00	0.00	0.00	0.00	40°09'28.6164"N	104°35'43.6056"W	0.00	
1830.00†	0.000	310.680	1830.00	0.00	0.00	0.00	40°09'28.6164"N	104°35'43.6056"W	0.00	
1930.00†	0.000	310.680	1930.00	0.00	0.00	0.00	40°09'28.6164"N	104°35'43.6056"W	0.00	
2030.00†	0.000	310.680	2030.00	0.00	0.00	0.00	40°09'28.6164"N	104°35'43.6056"W	0.00	
2130.00†	0.000	310.680	2130.00	0.00	0.00	0.00	40°09'28.6164"N	104°35'43.6056"W	0.00	
2230.00†	0.000	310.680	2230.00	0.00	0.00	0.00	40°09'28.6164"N	104°35'43.6056"W	0.00	
2330.00†	0.000	310.680	2330.00	0.00	0.00	0.00	40°09'28.6164"N	104°35'43.6056"W	0.00	
2430.00†	0.000	310.680	2430.00	0.00	0.00	0.00	40°09'28.6164"N	104°35'43.6056"W	0.00	
2530.00†	0.000	310.680	2530.00	0.00	0.00	0.00	40°09'28.6164"N	104°35'43.6056"W	0.00	
2600.00	0.000	310.680	2600.00	0.00	0.00	0.00	40°09'28.6164"N	104°35'43.6056"W	0.00	End of Tangent
2630.00†	0.600	310.680	2630.00	-0.08	0.10	-0.12	40°09'28.6174"N	104°35'43.6071"W	2.00	
2730.00†	2.600	310.680	2729.96	-1.52	1.92	-2.24	40°09'28.6356"N	104°35'43.6342"W	2.00	
2830.00†	4.600	310.680	2829.75	-4.74	6.02	-7.00	40°09'28.6765"N	104°35'43.6949"W	2.00	
2930.00†	6.600	310.680	2929.27	-9.76	12.38	-14.40	40°09'28.7401"N	104°35'43.7894"W	2.00	
3030.00†	8.600	310.680	3028.39	-16.55	21.00	-24.43	40°09'28.8263"N	104°35'43.9174"W	2.00	
3130.00†	10.600	310.680	3126.98	-25.12	31.87	-37.07	40°09'28.9350"N	104°35'44.0789"W	2.00	
3230.00†	12.600	310.680	3224.93	-35.46	44.97	-52.32	40°09'29.0661"N	104°35'44.2735"W	2.00	
3330.00†	14.600	310.680	3322.13	-47.54	60.30	-70.15	40°09'29.2193"N	104°35'44.5012"W	2.00	
3430.00†	16.600	310.680	3418.44	-61.36	77.83	-90.55	40°09'29.3946"N	104°35'44.7615"W	2.00	
3530.00†	18.600	310.680	3513.75	-76.90	97.54	-113.48	40°09'29.5916"N	104°35'45.0542"W	2.00	
3630.00†	20.600	310.680	3607.95	-94.13	119.40	-138.91	40°09'29.8103"N	104°35'45.3789"W	2.00	
3730.00†	22.600	310.680	3700.93	-113.05	143.40	-166.83	40°09'30.0502"N	104°35'45.7353"W	2.00	
3830.00†	24.600	310.680	3792.56	-133.62	169.49	-197.19	40°09'30.3111"N	104°35'46.1229"W	2.00	
3930.00†	26.600	310.680	3882.74	-155.83	197.65	-229.95	40°09'30.5927"N	104°35'46.5412"W	2.00	
4030.00†	28.600	310.680	3971.35	-179.64	227.85	-265.09	40°09'30.8946"N	104°35'46.9897"W	2.00	
4130.00†	30.600	310.680	4058.30	-205.02	260.05	-302.54	40°09'31.2165"N	104°35'47.4678"W	2.00	
4160.36	31.207	310.680	4084.35	-213.03	270.21	-314.37	40°09'31.3182"N	104°35'47.6188"W	2.00	Build (XS)



Planned Wellpath Report
PIONEER Y18-785 (REV-1.0) PWP
Page 3 of 7



REFERENCE WELLPATH IDENTIFICATION			
Operator	NOBLE ENERGY, INC	Well	Pioneer Y18-785
Field	WELD COUNTY (NOBLE NAD 83 GRID)	API/Legal	
Facility	SEC.07-T02N-R64W	Wellbore	Pioneer Y18-785 PWB
Slot	SLOT#27 PIONEER Y18-785 (729'FNL & 2088'FWL,SEC.07)		

WELLPATH DATA (185 stations) † = interpolated, ‡ = extrapolated station										
MD [ft]	Inclination [°]	Azimuth [°]	TVD [ft]	Vert Sect [ft]	North [ft]	East [ft]	Latitude	Longitude	DLS [°/100ft]	Comments
4230.00†	31.207	310.680	4143.91	-231.58	293.73	-341.73	40°09'31.5533"N	104°35'47.9681"W	0.00	
4330.00†	31.207	310.680	4229.44	-258.20	327.50	-381.03	40°09'31.8910"N	104°35'48.4697"W	0.00	
4430.00†	31.207	310.680	4314.97	-284.83	361.28	-420.32	40°09'32.2287"N	104°35'48.9714"W	0.00	
4530.00†	31.207	310.680	4400.50	-311.46	395.05	-459.61	40°09'32.5664"N	104°35'49.4730"W	0.00	
4630.00†	31.207	310.680	4486.03	-338.08	428.83	-498.90	40°09'32.9041"N	104°35'49.9746"W	0.00	
4730.00†	31.207	310.680	4571.56	-364.71	462.60	-538.20	40°09'33.2418"N	104°35'50.4762"W	0.00	
4830.00†	31.207	310.680	4657.09	-391.34	496.37	-577.49	40°09'33.5795"N	104°35'50.9779"W	0.00	
4930.00†	31.207	310.680	4742.62	-417.96	530.15	-616.78	40°09'33.9172"N	104°35'51.4795"W	0.00	
5030.00†	31.207	310.680	4828.15	-444.59	563.92	-656.08	40°09'34.2549"N	104°35'51.9811"W	0.00	
5130.00†	31.207	310.680	4913.68	-471.22	597.70	-695.37	40°09'34.5926"N	104°35'52.4828"W	0.00	
5230.00†	31.207	310.680	4999.21	-497.85	631.47	-734.66	40°09'34.9302"N	104°35'52.9844"W	0.00	
5330.00†	31.207	310.680	5084.74	-524.47	665.24	-773.96	40°09'35.2679"N	104°35'53.4860"W	0.00	
5430.00†	31.207	310.680	5170.27	-551.10	699.02	-813.25	40°09'35.6056"N	104°35'53.9877"W	0.00	
5530.00†	31.207	310.680	5255.80	-577.73	732.79	-852.54	40°09'35.9433"N	104°35'54.4893"W	0.00	
5630.00†	31.207	310.680	5341.33	-604.35	766.57	-891.84	40°09'36.2810"N	104°35'54.9909"W	0.00	
5730.00†	31.207	310.680	5426.86	-630.98	800.34	-931.13	40°09'36.6187"N	104°35'55.4926"W	0.00	
5830.00†	31.207	310.680	5512.39	-657.61	834.11	-970.42	40°09'36.9564"N	104°35'55.9942"W	0.00	
5930.00†	31.207	310.680	5597.92	-684.24	867.89	-1009.72	40°09'37.2940"N	104°35'56.4959"W	0.00	
6030.00†	31.207	310.680	5683.45	-710.86	901.66	-1049.01	40°09'37.6317"N	104°35'56.9975"W	0.00	
6130.00†	31.207	310.680	5768.98	-737.49	935.44	-1088.30	40°09'37.9694"N	104°35'57.4992"W	0.00	
6230.00†	31.207	310.680	5854.51	-764.12	969.21	-1127.60	40°09'38.3071"N	104°35'58.0008"W	0.00	
6330.00†	31.207	310.680	5940.04	-790.74	1002.98	-1166.89	40°09'38.6448"N	104°35'58.5024"W	0.00	
6430.00†	31.207	310.680	6025.57	-817.37	1036.76	-1206.18	40°09'38.9825"N	104°35'59.0041"W	0.00	
6530.00†	31.207	310.680	6111.10	-844.00	1070.53	-1245.48	40°09'39.3201"N	104°35'59.5057"W	0.00	
6579.04	31.207	310.680	6153.04	-857.06	1087.09	-1264.75	40°09'39.4857"N	104°35'59.7518"W	0.00	KOP
6630.00†	28.716	302.960	6197.20	-868.67	1102.37	-1285.04	40°09'39.6387"N	104°36'0.0111"W	9.00	
6730.00†	25.417	284.461	6286.40	-879.92	1120.83	-1326.06	40°09'39.8253"N	104°36'0.5371"W	9.00	
6830.00†	24.884	263.221	6377.10	-875.68	1123.72	-1367.82	40°09'39.8580"N	104°36'1.0745"W	9.00	
6930.00†	27.280	243.390	6467.09	-856.07	1110.94	-1409.29	40°09'39.7359"N	104°36'1.6102"W	9.00	
7030.00†	31.950	227.740	6554.13	-821.55	1082.82	-1449.44	40°09'39.4621"N	104°36'2.1311"W	9.00	
7130.00†	38.062	216.171	6636.09	-772.99	1040.06	-1487.30	40°09'39.0433"N	104°36'2.6242"W	9.00	
7230.00†	45.025	207.543	6710.95	-711.58	983.70	-1521.92	40°09'38.4898"N	104°36'3.0774"W	9.00	
7330.00†	52.494	200.848	6776.87	-638.82	915.13	-1552.45	40°09'37.8153"N	104°36'3.4797"W	9.00	
7430.00†	60.271	195.398	6832.22	-556.52	836.03	-1578.15	40°09'37.0363"N	104°36'3.8209"W	9.00	
7530.00†	68.239	190.744	6875.64	-466.70	748.37	-1598.38	40°09'36.1721"N	104°36'4.0929"W	9.00	
7630.00†	76.322	186.586	6906.06	-371.56	654.29	-1612.63	40°09'35.2439"N	104°36'4.2888"W	9.00	
7730.00†	84.471	182.707	6922.74	-273.46	556.12	-1620.57	40°09'34.2745"N	104°36'4.4039"W	9.00	
7797.66	90.000	180.153	6926.00†	-206.63	488.59	-1622.26	40°09'33.6075"N	104°36'4.4344"W	9.00	LP/TPZ
7830.00†	90.000	180.153	6926.00	-174.74	456.25	-1622.34	40°09'33.2879"N	104°36'4.4397"W	0.00	
7930.00†	90.000	180.153	6926.00	-76.14	356.25	-1622.61	40°09'32.2997"N	104°36'4.4562"W	0.00	
8030.00†	90.000	180.153	6926.00	22.46	256.25	-1622.87	40°09'31.3116"N	104°36'4.4727"W	0.00	
8130.00†	90.000	180.153	6926.00	121.06	156.25	-1623.14	40°09'30.3235"N	104°36'4.4891"W	0.00	
8230.00†	90.000	180.153	6926.00	219.66	56.25	-1623.41	40°09'29.3354"N	104°36'4.5056"W	0.00	
8330.00†	90.000	180.153	6926.00	318.25	-43.75	-1623.67	40°09'28.3472"N	104°36'4.5221"W	0.00	
8430.00†	90.000	180.153	6926.00	416.85	-143.75	-1623.94	40°09'27.3591"N	104°36'4.5386"W	0.00	



Planned Wellpath Report
PIONEER Y18-785 (REV-1.0) PWP
Page 4 of 7



REFERENCE WELLPATH IDENTIFICATION			
Operator	NOBLE ENERGY, INC	Well	Pioneer Y18-785
Field	WELD COUNTY (NOBLE NAD 83 GRID)	API/Legal	
Facility	SEC.07-T02N-R64W	Wellbore	Pioneer Y18-785 PWB
Slot	SLOT#27 PIONEER Y18-785 (729'FNL & 2088'FWL,SEC.07)		

WELLPATH DATA (185 stations) † = interpolated, ‡ = extrapolated station										
MD [ft]	Inclination [°]	Azimuth [°]	TVD [ft]	Vert Sect [ft]	North [ft]	East [ft]	Latitude	Longitude	DLS [°/100ft]	Comments
8530.00†	90.000	180.153	6926.00	515.45	-243.75	-1624.21	40°09'26.3710"N	104°36'4.5551"W	0.00	
8630.00†	90.000	180.153	6926.00	614.05	-343.75	-1624.47	40°09'25.3829"N	104°36'4.5716"W	0.00	
8730.00†	90.000	180.153	6926.00	712.65	-443.75	-1624.74	40°09'24.3947"N	104°36'4.5880"W	0.00	
8830.00†	90.000	180.153	6926.00	811.25	-543.75	-1625.00	40°09'23.4066"N	104°36'4.6045"W	0.00	
8930.00†	90.000	180.153	6926.00	909.85	-643.75	-1625.27	40°09'22.4185"N	104°36'4.6210"W	0.00	
9030.00†	90.000	180.153	6926.00	1008.44	-743.75	-1625.54	40°09'21.4304"N	104°36'4.6375"W	0.00	
9130.00†	90.000	180.153	6926.00	1107.04	-843.75	-1625.80	40°09'20.4423"N	104°36'4.6540"W	0.00	
9230.00†	90.000	180.153	6926.00	1205.64	-943.75	-1626.07	40°09'19.4541"N	104°36'4.6704"W	0.00	
9330.00†	90.000	180.153	6926.00	1304.24	-1043.74	-1626.34	40°09'18.4660"N	104°36'4.6869"W	0.00	
9430.00†	90.000	180.153	6926.00	1402.84	-1143.74	-1626.60	40°09'17.4779"N	104°36'4.7034"W	0.00	
9530.00†	90.000	180.153	6926.00	1501.44	-1243.74	-1626.87	40°09'16.4898"N	104°36'4.7199"W	0.00	
9630.00†	90.000	180.153	6926.00	1600.04	-1343.74	-1627.13	40°09'15.5016"N	104°36'4.7364"W	0.00	
9730.00†	90.000	180.153	6926.00	1698.63	-1443.74	-1627.40	40°09'14.5135"N	104°36'4.7529"W	0.00	
9830.00†	90.000	180.153	6926.00	1797.23	-1543.74	-1627.67	40°09'13.5254"N	104°36'4.7693"W	0.00	
9930.00†	90.000	180.153	6926.00	1895.83	-1643.74	-1627.93	40°09'12.5373"N	104°36'4.7858"W	0.00	
10030.00†	90.000	180.153	6926.00	1994.43	-1743.74	-1628.20	40°09'11.5491"N	104°36'4.8023"W	0.00	
10130.00†	90.000	180.153	6926.00	2093.03	-1843.74	-1628.47	40°09'10.5610"N	104°36'4.8188"W	0.00	
10230.00†	90.000	180.153	6926.00	2191.63	-1943.74	-1628.73	40°09'9.5729"N	104°36'4.8353"W	0.00	
10330.00†	90.000	180.153	6926.00	2290.23	-2043.74	-1629.00	40°09'8.5848"N	104°36'4.8517"W	0.00	
10430.00†	90.000	180.153	6926.00	2388.82	-2143.74	-1629.26	40°09'7.5966"N	104°36'4.8682"W	0.00	
10530.00†	90.000	180.153	6926.00	2487.42	-2243.74	-1629.53	40°09'6.6085"N	104°36'4.8847"W	0.00	
10630.00†	90.000	180.153	6926.00	2586.02	-2343.74	-1629.80	40°09'5.6204"N	104°36'4.9012"W	0.00	
10730.00†	90.000	180.153	6926.00	2684.62	-2443.74	-1630.06	40°09'4.6323"N	104°36'4.9176"W	0.00	
10830.00†	90.000	180.153	6926.00	2783.22	-2543.74	-1630.33	40°09'3.6441"N	104°36'4.9341"W	0.00	
10930.00†	90.000	180.153	6926.00	2881.82	-2643.74	-1630.60	40°09'2.6560"N	104°36'4.9506"W	0.00	
11030.00†	90.000	180.153	6926.00	2980.42	-2743.74	-1630.86	40°09'1.6679"N	104°36'4.9671"W	0.00	
11130.00†	90.000	180.153	6926.00	3079.01	-2843.74	-1631.13	40°09'0.6798"N	104°36'4.9836"W	0.00	
11230.00†	90.000	180.153	6926.00	3177.61	-2943.74	-1631.39	40°08'59.6916"N	104°36'5.0000"W	0.00	
11330.00†	90.000	180.153	6926.00	3276.21	-3043.74	-1631.66	40°08'58.7035"N	104°36'5.0165"W	0.00	
11430.00†	90.000	180.153	6926.00	3374.81	-3143.74	-1631.93	40°08'57.7154"N	104°36'5.0330"W	0.00	
11530.00†	90.000	180.153	6926.00	3473.41	-3243.74	-1632.19	40°08'56.7272"N	104°36'5.0495"W	0.00	
11630.00†	90.000	180.153	6926.00	3572.01	-3343.74	-1632.46	40°08'55.7391"N	104°36'5.0660"W	0.00	
11730.00†	90.000	180.153	6926.00	3670.61	-3443.74	-1632.73	40°08'54.7510"N	104°36'5.0824"W	0.00	
11830.00†	90.000	180.153	6926.00	3769.20	-3543.74	-1632.99	40°08'53.7629"N	104°36'5.0989"W	0.00	
11930.00†	90.000	180.153	6926.00	3867.80	-3643.74	-1633.26	40°08'52.7747"N	104°36'5.1154"W	0.00	
12030.00†	90.000	180.153	6926.00	3966.40	-3743.74	-1633.52	40°08'51.7866"N	104°36'5.1319"W	0.00	
12130.00†	90.000	180.153	6926.00	4065.00	-3843.73	-1633.79	40°08'50.7985"N	104°36'5.1483"W	0.00	
12230.00†	90.000	180.153	6926.00	4163.60	-3943.73	-1634.06	40°08'49.8104"N	104°36'5.1648"W	0.00	
12330.00†	90.000	180.153	6926.00	4262.20	-4043.73	-1634.32	40°08'48.8222"N	104°36'5.1813"W	0.00	
12430.00†	90.000	180.153	6926.00	4360.80	-4143.73	-1634.59	40°08'47.8341"N	104°36'5.1978"W	0.00	
12530.00†	90.000	180.153	6926.00	4459.39	-4243.73	-1634.86	40°08'46.8460"N	104°36'5.2143"W	0.00	
12630.00†	90.000	180.153	6926.00	4557.99	-4343.73	-1635.12	40°08'45.8579"N	104°36'5.2307"W	0.00	
12730.00†	90.000	180.153	6926.00	4656.59	-4443.73	-1635.39	40°08'44.8697"N	104°36'5.2472"W	0.00	
12830.00†	90.000	180.153	6926.00	4755.19	-4543.73	-1635.66	40°08'43.8816"N	104°36'5.2637"W	0.00	
12930.00†	90.000	180.153	6926.00	4853.79	-4643.73	-1635.92	40°08'42.8935"N	104°36'5.2802"W	0.00	



Planned Wellpath Report
PIONEER Y18-785 (REV-1.0) PWP
Page 5 of 7



REFERENCE WELLPATH IDENTIFICATION			
Operator	NOBLE ENERGY, INC	Well	Pioneer Y18-785
Field	WELD COUNTY (NOBLE NAD 83 GRID)	API/Legal	
Facility	SEC.07-T02N-R64W	Wellbore	Pioneer Y18-785 PWB
Slot	SLOT#27 PIONEER Y18-785 (729'FNL & 2088'FWL,SEC.07)		

WELLPATH DATA (185 stations) † = interpolated, ‡ = extrapolated station										
MD [ft]	Inclination [°]	Azimuth [°]	TVD [ft]	Vert Sect [ft]	North [ft]	East [ft]	Latitude	Longitude	DLS [°/100ft]	Comments
13030.00†	90.000	180.153	6926.00	4952.39	-4743.73	-1636.19	40°08'41.9054"N	104°36'5.2966"W	0.00	
13130.00†	90.000	180.153	6926.00	5050.99	-4843.73	-1636.45	40°08'40.9172"N	104°36'5.3131"W	0.00	
13230.00†	90.000	180.153	6926.00	5149.58	-4943.73	-1636.72	40°08'39.9291"N	104°36'5.3296"W	0.00	
13330.00†	90.000	180.153	6926.00	5248.18	-5043.73	-1636.99	40°08'38.9410"N	104°36'5.3461"W	0.00	
13430.00†	90.000	180.153	6926.00	5346.78	-5143.73	-1637.25	40°08'37.9529"N	104°36'5.3625"W	0.00	
13530.00†	90.000	180.153	6926.00	5445.38	-5243.73	-1637.52	40°08'36.9647"N	104°36'5.3790"W	0.00	
13630.00†	90.000	180.153	6926.00	5543.98	-5343.73	-1637.79	40°08'35.9766"N	104°36'5.3955"W	0.00	
13730.00†	90.000	180.153	6926.00	5642.58	-5443.73	-1638.05	40°08'34.9885"N	104°36'5.4120"W	0.00	
13830.00†	90.000	180.153	6926.00	5741.18	-5543.73	-1638.32	40°08'34.0004"N	104°36'5.4284"W	0.00	
13930.00†	90.000	180.153	6926.00	5839.77	-5643.73	-1638.58	40°08'33.0122"N	104°36'5.4449"W	0.00	
14030.00†	90.000	180.153	6926.00	5938.37	-5743.73	-1638.85	40°08'32.0241"N	104°36'5.4614"W	0.00	
14130.00†	90.000	180.153	6926.00	6036.97	-5843.73	-1639.12	40°08'31.0360"N	104°36'5.4779"W	0.00	
14230.00†	90.000	180.153	6926.00	6135.57	-5943.73	-1639.38	40°08'30.0478"N	104°36'5.4943"W	0.00	
14330.00†	90.000	180.153	6926.00	6234.17	-6043.73	-1639.65	40°08'29.0597"N	104°36'5.5108"W	0.00	
14430.00†	90.000	180.153	6926.00	6332.77	-6143.73	-1639.92	40°08'28.0716"N	104°36'5.5273"W	0.00	
14530.00†	90.000	180.153	6926.00	6431.37	-6243.73	-1640.18	40°08'27.0835"N	104°36'5.5438"W	0.00	
14630.00†	90.000	180.153	6926.00	6529.96	-6343.73	-1640.45	40°08'26.0953"N	104°36'5.5602"W	0.00	
14730.00†	90.000	180.153	6926.00	6628.56	-6443.73	-1640.71	40°08'25.1072"N	104°36'5.5767"W	0.00	
14830.00†	90.000	180.153	6926.00	6727.16	-6543.73	-1640.98	40°08'24.1191"N	104°36'5.5932"W	0.00	
14930.00†	90.000	180.153	6926.00	6825.76	-6643.72	-1641.25	40°08'23.1310"N	104°36'5.6097"W	0.00	
15030.00†	90.000	180.153	6926.00	6924.36	-6743.72	-1641.51	40°08'22.1428"N	104°36'5.6261"W	0.00	
15130.00†	90.000	180.153	6926.00	7022.96	-6843.72	-1641.78	40°08'21.1547"N	104°36'5.6426"W	0.00	
15230.00†	90.000	180.153	6926.00	7121.56	-6943.72	-1642.05	40°08'20.1666"N	104°36'5.6591"W	0.00	
15330.00†	90.000	180.153	6926.00	7220.15	-7043.72	-1642.31	40°08'19.1785"N	104°36'5.6756"W	0.00	
15430.00†	90.000	180.153	6926.00	7318.75	-7143.72	-1642.58	40°08'18.1903"N	104°36'5.6920"W	0.00	
15530.00†	90.000	180.153	6926.00	7417.35	-7243.72	-1642.84	40°08'17.2022"N	104°36'5.7085"W	0.00	
15630.00†	90.000	180.153	6926.00	7515.95	-7343.72	-1643.11	40°08'16.2141"N	104°36'5.7250"W	0.00	
15730.00†	90.000	180.153	6926.00	7614.55	-7443.72	-1643.38	40°08'15.2259"N	104°36'5.7414"W	0.00	
15830.00†	90.000	180.153	6926.00	7713.15	-7543.72	-1643.64	40°08'14.2378"N	104°36'5.7579"W	0.00	
15930.00†	90.000	180.153	6926.00	7811.75	-7643.72	-1643.91	40°08'13.2497"N	104°36'5.7744"W	0.00	
16030.00†	90.000	180.153	6926.00	7910.34	-7743.72	-1644.18	40°08'12.2616"N	104°36'5.7909"W	0.00	
16130.00†	90.000	180.153	6926.00	8008.94	-7843.72	-1644.44	40°08'11.2734"N	104°36'5.8073"W	0.00	
16230.00†	90.000	180.153	6926.00	8107.54	-7943.72	-1644.71	40°08'10.2853"N	104°36'5.8238"W	0.00	
16330.00†	90.000	180.153	6926.00	8206.14	-8043.72	-1644.97	40°08'9.2972"N	104°36'5.8403"W	0.00	
16430.00†	90.000	180.153	6926.00	8304.74	-8143.72	-1645.24	40°08'8.3091"N	104°36'5.8567"W	0.00	
16530.00†	90.000	180.153	6926.00	8403.34	-8243.72	-1645.51	40°08'7.3209"N	104°36'5.8732"W	0.00	
16630.00†	90.000	180.153	6926.00	8501.94	-8343.72	-1645.77	40°08'6.3328"N	104°36'5.8897"W	0.00	
16730.00†	90.000	180.153	6926.00	8600.53	-8443.72	-1646.04	40°08'5.3447"N	104°36'5.9062"W	0.00	
16830.00†	90.000	180.153	6926.00	8699.13	-8543.72	-1646.31	40°08'4.3565"N	104°36'5.9226"W	0.00	
16930.00†	90.000	180.153	6926.00	8797.73	-8643.72	-1646.57	40°08'3.3684"N	104°36'5.9391"W	0.00	
17030.00†	90.000	180.153	6926.00	8896.33	-8743.72	-1646.84	40°08'2.3803"N	104°36'5.9556"W	0.00	
17130.00†	90.000	180.153	6926.00	8994.93	-8843.72	-1647.10	40°08'1.3922"N	104°36'5.9720"W	0.00	
17230.00†	90.000	180.153	6926.00	9093.53	-8943.72	-1647.37	40°08'0.4040"N	104°36'5.9885"W	0.00	
17330.00†	90.000	180.153	6926.00	9192.13	-9043.72	-1647.64	40°07'59.4159"N	104°36'6.0050"W	0.00	
17430.00†	90.000	180.153	6926.00	9290.72	-9143.72	-1647.90	40°07'58.4278"N	104°36'6.0215"W	0.00	



Planned Wellpath Report

PIONEER Y18-785 (REV-1.0) PWP

Page 6 of 7



REFERENCE WELLPATH IDENTIFICATION			
Operator	NOBLE ENERGY, INC	Well	Pioneer Y18-785
Field	WELD COUNTY (NOBLE NAD 83 GRID)	API/Legal	
Facility	SEC.07-T02N-R64W	Wellbore	Pioneer Y18-785 PWB
Slot	SLOT#27 PIONEER Y18-785 (729'FNL & 2088'FWL,SEC.07)		

WELLPATH DATA (185 stations) † = interpolated, ‡ = extrapolated station										
MD [ft]	Inclination [°]	Azimuth [°]	TVD [ft]	Vert Sect [ft]	North [ft]	East [ft]	Latitude	Longitude	DLS [°/100ft]	Comments
17530.00†	90.000	180.153	6926.00	9389.32	-9243.72	-1648.17	40°07'57.4396"N	104°36'6.0379"W	0.00	
17630.00†	90.000	180.153	6926.00	9487.92	-9343.72	-1648.44	40°07'56.4515"N	104°36'6.0544"W	0.00	
17730.00†	90.000	180.153	6926.00	9586.52	-9443.71	-1648.70	40°07'55.4634"N	104°36'6.0709"W	0.00	
17830.00†	90.000	180.153	6926.00	9685.12	-9543.71	-1648.97	40°07'54.4753"N	104°36'6.0873"W	0.00	
17877.35	90.000	180.153	6926.00 ²	9731.80	-9591.06	-1649.09	40°07'54.0074"N	104°36'6.0951"W	0.00	BHL

HOLE & CASING SECTIONS - Ref Wellbore: Pioneer Y18-785 PWB Ref Wellpath: PIONEER Y18-785 (REV-1.0) PWP									
String/Diameter	Start MD [ft]	End MD [ft]	Interval [ft]	Start TVD [ft]	End TVD [ft]	Start N/S [ft]	Start E/W [ft]	End N/S [ft]	End E/W [ft]
9.625in Casing Surface	30.00	1950.00	1920.00	30.00	1950.00	0.00	0.00	0.00	0.00

TARGETS									
Name	MD [ft]	TVD [ft]	North [ft]	East [ft]	Grid East [US ft]	Grid North [US ft]	Latitude	Longitude	Shape
PIONEER Y18-785 SECTION 18	N/A	1.00	43.61	-46.29	3252776.45	1301717.15	40°09'29.0520"N	104°35'44.1960"W	polygon
	2D Polygon: dimensions not calculated								
PIONEER Y18-785 SECTION 7	N/A	1.00	43.61	-46.29	3252776.45	1301717.15	40°09'29.0520"N	104°35'44.1960"W	polygon
	2D Polygon: dimensions not calculated								
2) PIONEER Y18-785 BHL PLAN (200'FSL & 350'FWL,SEC.18)	17877.35	6926.00	-9591.06	-1649.09	3251173.72	1292082.90	40°07'54.0074"N	104°36'6.0951"W	point
1) PIONEER Y18-785 LP/TPZ REV-2 (200'FNL & 470'FWL,SEC.07)	7797.66	6926.00	488.59	-1622.26	3251200.56	1302162.12	40°09'33.6075"N	104°36'4.4344"W	point

SURVEY PROGRAM - Ref Wellbore: Pioneer Y18-785 PWB Ref Wellpath: PIONEER Y18-785 (REV-1.0) PWP					
Start MD [ft]	End MD [ft]	Positional Uncertainty Model		Log Name/Comment	Wellbore
30.00	1950.00	Gyrodata 2015 - GC+DROP+COND			Pioneer Y18-785 PWB
1950.00	17877.35	OWSG MWD rev2 (MS+IFR1)			Pioneer Y18-785 PWB



Planned Wellpath Report

PIONEER Y18-785 (REV-1.0) PWP

Page 7 of 7



REFERENCE WELLPATH IDENTIFICATION			
Operator	NOBLE ENERGY, INC	Well	Pioneer Y18-785
Field	WELD COUNTY (NOBLE NAD 83 GRID)	API/Legal	
Facility	SEC.07-T02N-R64W	Wellbore	Pioneer Y18-785 PWB
Slot	SLOT#27 PIONEER Y18-785 (729'FNL & 2088'FWL,SEC.07)		

DESIGN COMMENTS				
MD [ft]	Inclination [°]	Azimuth [°]	TVD [ft]	Comment
30.00	0.000	310.680	30.00	SHL
2600.00	0.000	310.680	2600.00	End of Tangent
4160.36	31.207	310.680	4084.35	Build (XS)
6579.04	31.207	310.680	6153.04	KOP
7797.66	90.000	180.153	6926.00	LP/TPZ
17877.35	90.000	180.153	6926.00	BHL



Closest Approach Clearance Summary Report

PIONEER Y18-785 (REV-1.0) PWP - SPE WPTS Stop Drilling HSE Risk (2017)

Page 1 of 4



REFERENCE WELLPATH IDENTIFICATION			
Operator	NOBLE ENERGY, INC	Well	Pioneer Y18-785
Field	WELD COUNTY (NOBLE NAD 83 GRID)	API/Legal	
Facility	SEC.07-T02N-R64W	Wellbore	Pioneer Y18-785 PWB
Slot	SLOT#27 PIONEER Y18-785 (729'FNL & 2088'FWL,SEC.07)		

REPORT SETUP INFORMATION			
Projection System	NAD83 / Lambert Colorado SP, Northern Zone (501), US feet	Software System	WellArchitect® 6.0
North Reference	Grid	User	Guenaler
Scale	0.999958	Report Generated	5/23/2022 at 10:14:23 AM
Convergence at slot	0.58° East	Database	WA_Denver

WELLPATH LOCATION						
	Local coordinates		Grid coordinates		Geographic coordinates	
	North[ft]	East[ft]	Easting[US ft]	Northing[US ft]	Latitude	Longitude
Slot Location	-46.06	163.72	3252822.74	1301673.55	40°09'28.6164"N	104°35'43.6056"W
Facility Reference Pt			3252659.03	1301719.60	40°09'29.0880"N	104°35'45.7080"W
Field Reference Pt			3000000.00	4454105.15	48°46'34.3150"N	105°30'0.0000"W

WELLPATH DATUM			
Calculation method	Minimum Curvature	(4886'GL+30'KB@4916'RKB) (RKB) to Facility Vertical Datum	4916.00ft
Horizontal Reference Pt	Slot	(4886'GL+30'KB@4916'RKB) (RKB) to Mean Sea Level	4916.00ft
Vertical Reference Pt	(4886'GL+30'KB@4916'RKB) (RKB)	(4886'GL+30'KB@4916'RKB) (RKB) to Mud Line at Slot (SLOT#27 PIONEER Y18-785 (729'FNL & 2088'FWL,SEC.07))	4916.00ft
MD Reference Pt	(4886'GL+30'KB@4916'RKB) (RKB)		
Field Vertical Reference	Mean Sea Level		

POSITIONAL UNCERTAINTY CALCULATION SETTINGS					
Ellipse Confidence Limit	3.50 Std Dev	Ellipse Start MD	30.00ft	Surface Position Uncertainty	included
Declination	7.73° East of TN	Dip Angle	66.45°	Mag Field Strength	51798 nT
Slot Surface Uncertainty @1SD		Horizontal	0.100ft	Vertical	1.000ft
Facility Surface Uncertainty @1SD		Horizontal	8.200ft	Vertical	3.000ft
Positional Uncertainty values in the WELLPATH DATA table are the projection of the ellipsoid of uncertainty onto the vertical and horizontal planes					



Closest Approach Clearance Summary Report

PIONEER Y18-785 (REV-1.0) PWP - SPE WPTS Stop Drilling HSE Risk (2017)

Page 2 of 4



REFERENCE WELLPATH IDENTIFICATION			
Operator	NOBLE ENERGY, INC	Well	Pioneer Y18-785
Field	WELD COUNTY (NOBLE NAD 83 GRID)	API/Legal	
Facility	SEC.07-T02N-R64W	Wellbore	Pioneer Y18-785 PWB
Slot	SLOT#27 PIONEER Y18-785 (729'FNL & 2088'FWL,SEC.07)		

PROXIMITY-SCAN RULE			
Rule Name	SPE WPTS Stop Drilling HSE Risk (2017)	Rule Based On	Ratio
Plane of Rule	Closest Approach	Threshold Value	1.00
Include Casing & Hole Size	yes	Apply Cone of Safety	no

HOLE & CASING SECTIONS - Ref Wellbore: Pioneer Y18-785 PWB Ref Wellpath: PIONEER Y18-785 (REV-1.0) PWP									
String/Diameter	Start MD [ft]	End MD [ft]	Interval [ft]	Start TVD [ft]	End TVD [ft]	Start N/S [ft]	Start E/W [ft]	End N/S [ft]	End E/W [ft]
9.625in Casing Surface	30.00	1950.00	1920.00	30.00	1950.00	0.00	0.00	0.00	0.00

SURVEY PROGRAM - Ref Wellbore: Pioneer Y18-785 PWB Ref Wellpath: PIONEER Y18-785 (REV-1.0) PWP				
Start MD [ft]	End MD [ft]	Positional Uncertainty Model	Log Name/Comment	Wellbore
30.00	1950.00	Gyrodatta 2015 - GC+DROP+COND		Pioneer Y18-785 PWB
1950.00	17877.35	OWSG MWD rev2 (MS+IFR1)		Pioneer Y18-785 PWB



Closest Approach Clearance Summary Report

PIONEER Y18-785 (REV-1.0) PWP - SPE WPTS Stop Drilling HSE Risk (2017)

Page 3 of 4



REFERENCE WELLPATH IDENTIFICATION			
Operator	NOBLE ENERGY, INC	Well	Pioneer Y18-785
Field	WELD COUNTY (NOBLE NAD 83 GRID)	API/Legal	
Facility	SEC.07-T02N-R64W	Wellbore	Pioneer Y18-785 PWB
Slot	SLOT#27 PIONEER Y18-785 (729'FNL & 2088'FWL,SEC.07)		

CALCULATION RANGE & CUTOFF		
From: 30.00ft MD	To: 17877.35ft MD	C-C Cutoff: (none)

OFFSET WELL CLEARANCE SUMMARY (34 Offset Wellpaths selected) Ratios are calculated in Closest Approach plane												
Offset Facility	Offset Slot	Offset Well	Offset Wellbore	Offset Wellpath	Wellbore Status	C-C Clearance Distance			Rule Separation Ratio			
						Ref MD [ft]	Min C-C Clear Dist [ft]	Diverging from MD [ft]	Ref MD of Min Ratio [ft]	Min Ratio	Min Ratio Dvrg from [ft]	Rule Status
SEC.07-T02N-R64W	SLOT#26 PIONEER Y18-775 (706'FNL & 2088'FWL,SEC.07)	Pioneer Y18-775	Pioneer Y18-775 PWB	PIONEER Y18-775 (REV-1.0) PWP	Planned	30.00	22.22	4730.00	2052.59	1.02	17877.35	WARN
SEC.07-T02N-R64W	SLOT#01 PIONEER D31-785 (680'FNL & 1923'FWL, SEC.07)	PIONEER D31-785	PIONEER D31-785 AWB	PIONEER D31-785 AWP	Drilling	7810.09	66.00	7810.09	7808.58	1.11	7808.58	PASS
SEC.07-T02N-R64W	SLOT#03 PIONEER D31-756 (681'FNL & 1991'FWL,SEC.07)	PIONEER D31-756	PIONEER D31-756 AWB	PIONEER D31-756 AWP	Drilling	3367.69	30.05	6930.00	3370.33	1.32	7130.00	PASS
SEC.07-T02N-R64W	SLOT#25 PIONEER Y18-770 (684'FNL & 2088'FWL,SEC.07)	PIONEER Y18-770	PIONEER Y18-770 PWB	PIONEER Y18-770 (REV-1.0) PWP	Planned	30.00	44.81	4030.00	2208.90	2.27	17877.35	PASS
SEC.13-T2N-R65W	SLOT#02 SWARTZ 26N-25HZ (310'FSL & 427'FEL,SEC.13)	SWARTZ 26N-25HZ	SWARTZ 26N-25HZ AWB	SWARTZ 26N-25HZ AWP	Drilling	17877.35	418.76	17877.35	17877.35	2.35	17877.35	PASS
SEC.13-T2N-R65W	SLOT#01 SWARTZ 26C-12HZ (310'FSL & 457'FEL,SEC.13)	SWARTZ 26C-12HZ	SWARTZ 26C-12HZ AWB	SWARTZ 26C-12HZ AWP	Drilling	17771.49	544.32	17771.49	7743.14	2.80	17877.35	PASS
Y Section 18	(Charles R Milliken Unit 1 (PR))	Charles R Milliken Unit 1 (PR)	Wellbore #1	Wellbore #1\Gyro Surveys	Drilling	16584.51	627.50	16584.51	16444.84	3.20	16444.84	PASS
SEC.07-T02N-R64W	SLOT#24 PIONEER Y18-766 (661'FNL & 2088'FWL,SEC.07)	Pioneer Y18-766	Pioneer Y18-766 PWB	Pioneer Y18-766 (REV-1.0) PWP	Planned	30.00	67.40	2130.00	2211.69	3.52	17877.35	PASS
SEC.07-T02N-R64W	SLOT#09 Harkis 11-7 (PA)	Harkis 11-7 (PA)	Harkis 11-7 (PA) AWB	Harkis 11-7 (PA) AWP	Drilling	8218.40	175.35	8218.40	8219.81	3.75	8219.81	PASS
SEC.07-T02N-R64W	SLOT#23 PIONEER Y18-756 (639'FNL & 2089'FWL,SEC.07)	Pioneer Y18-756	Pioneer Y18-756 PWB	PIONEER Y18-756 (REV-1.0) PWP	Planned	30.00	89.99	8130.00	2109.52	4.79	17877.35	PASS
SEC.07-T02N-R64W	SLOT#02 PIONEER D31-775 (680'FNL & 1946'FWL, SEC.07)	PIONEER D31-775	PIONEER D31-775 AWB	PIONEER D31-775 AWP	Drilling	1986.53	141.09	7230.00	4154.87	5.34	7330.00	PASS
Y Section 18	(ADA Harkins Unit A1 (PA))	ADA Harkins Unit A1 (PA)	Wellbore #1	Wellbore #1\Gyro Surveys	Drilling	14110.81	783.60	14110.81	14143.10	6.35	14143.10	PASS
SEC.07-T02N-R64W	SLOT#29 UPRR 53 PAN AM E 1 (PA)	UPRR 53 PAN AM E 1 (PA)	UPRR 53 PAN AM E 1 (PA) AWB	UPRR 53 PAN AM E 1 (PA) AWP	Drilling	11480.05	625.13	11480.05	11465.83	8.80	11465.83	PASS
SEC.07-T02N-R64W	SLOT#08 Harkis 1-7 (PA)	Harkis 1-7 (PA)	Harkis 1-7 (PA) AWB	Harkis 1-7 (PA) AWP	Drilling	8993.85	571.67	8993.85	8997.11	11.75	8997.11	PASS
SEC.07-T02N-R64W	SLOT#22 PIONEER Y18-744 (658'FNL & 2240'FEL,SEC.07)	Pioneer Y18-744	Pioneer Y18-744 PWB	Pioneer Y18-744 (REV-1.0) PWP	Planned	30.00	767.71	8030.00	17877.35	11.80	17877.35	PASS
SEC.07-T02N-R64W	SLOT#21 PIONEER Y18-735 (681'FNL & 2240'FEL,SEC.07)	Pioneer Y18-735	Pioneer Y18-735 PWB	Pioneer Y18-735 (REV-1.0) PWP	Planned	30.00	765.36	8130.00	17877.35	14.77	17877.35	PASS
Y Section 18	(HSR Harkis 15-18 (PR))	HSR Harkis 15-18 (PR)	Wellbore #1	Wellbore #1\As-Drilled	Drilling	16697.37	3239.06	16697.37	16154.83	15.92	16154.83	PASS
SEC.07-T02N-R64W	SLOT#20 PIONEER Y18-730 (703'FNL & 2239'FEL,SEC.07)	Pioneer Y18-730	Pioneer Y18-730 PWB	PIONEER Y18-730 (REV-1.0) PWP	Planned	30.00	763.97	2130.00	17877.35	16.24	17877.35	PASS
Y Section 18	(Lyle V Cooksey Gas Unit 1 (PR))	Lyle V Cooksey Gas Unit 1 (PR)	Wellbore #1	Wellbore #1\Gyro Surveys	Drilling	14476.18	3636.41	14476.18	15808.43	16.94	15808.43	PASS
SEC.07-T02N-R64W	SLOT#19 PIONEER Y18-725 (726'FNL & 2239'FEL,SEC.07)	PIONEER Y18-725	PIONEER Y18-725 PWB	PIONEER Y18-725 (REV-1.0) PWP	Planned	30.00	762.93	8230.00	17877.35	17.74	17877.35	PASS
SEC.07-T02N-R64W	SLOT#18 PIONEER Y18-715 (748'FNL & 2239'FEL,SEC.07)	Pioneer Y18-715	Pioneer Y18-715 PWB	PIONEER Y18-715 (REV-1.0) PWP	Planned	30.00	762.57	2230.00	17877.35	20.59	17877.35	PASS
SEC.07-T02N-R64W	SLOT#15 Pioneer 22-7 (SI)	Pioneer 22-7 (SI)	Pioneer 22-7 (SI) AWB	Pioneer 22-7 (SI) AWP	Drilling	2600.77	1405.32	9730.00	9891.10	29.12	9891.10	PASS
SEC.07-T02N-R64W	SLOT#10 HP Farms Y 7-15JI (PR)	HP Farms Y 7-15JI (PR)	HP Farms Y 7-15JI (PR) AWB	HP Farms Y 7-15JI (PR) AWP	Drilling	12113.71	2387.45	12113.71	12442.45	30.37	12442.45	PASS
SEC.07-T02N-R64W	SLOT#12 HP Y07-10D (PA)	HP Y07-10D (PA)	HP Y07-10D (PA) AWB	HP Y07-10D (PA) AWP	Drilling	10700.67	2543.81	10700.67	11160.36	38.63	11160.36	PASS
SEC.07-T02N-R64W	SLOT#05 PIONEER D31-744 (706'FNL & 2142'FEL, SEC.07)	PIONEER D31-744	PIONEER D31-744 AWB	PIONEER D31-744 AWP	Drilling	1665.34	855.64	2530.00	6892.86	41.70	6892.86	PASS



Closest Approach Clearance Summary Report

PIONEER Y18-785 (REV-1.0) PWP - SPE WPTS Stop Drilling HSE Risk (2017)

Page 4 of 4



REFERENCE WELLPATH IDENTIFICATION			
Operator	NOBLE ENERGY, INC	Well	Pioneer Y18-785
Field	WELD COUNTY (NOBLE NAD 83 GRID)	API/Legal	
Facility	SEC.07-T02N-R64W	Wellbore	Pioneer Y18-785 PWB
Slot	SLOT#27 PIONEER Y18-785 (729'FNL & 2088'FWL,SEC.07)		

CALCULATION RANGE & CUTOFF		
From: 30.00ft MD	To: 17877.35ft MD	C-C Cutoff: (none)

OFFSET WELL CLEARANCE SUMMARY (34 Offset Wellpaths selected) Ratios are calculated in Closest Approach plane												
Offset Facility	Offset Slot	Offset Well	Offset Wellbore	Offset Wellpath	Wellbore Status	C-C Clearance Distance			Rule Separation Ratio			
						Ref MD [ft]	Min C-C Clear Dist [ft]	Diverging from MD [ft]	Ref MD of Min Ratio [ft]	Min Ratio	Min Ratio Dvrg from [ft]	Rule Status
SEC.07-T02N-R64W	SLOT#28 UPRC 7-10Q (PR)	UPRC 7-10Q (PR)	UPRC 7-10Q (PR) AWB	UPRC 7-10Q (PR) AWP	Drilling	11364.94	3072.66	11364.94	12078.52	42.77	12078.52	PASS
SEC.07-T02N-R64W	SLOT#16 Pioneer USX Y07-08D (PR)	Pioneer USX Y07-08D (PR)	Pioneer USX Y07-08D (PR) AWB	Pioneer USX Y07-08D (PR) AWP	Drilling	3185.78	3065.22	9530.00	10180.92	43.61	10180.92	PASS
SEC.07-T02N-R64W	SLOT#17 Pioneer Y07-07D (PA)	Pioneer Y07-07D (PA)	Pioneer Y07-07D (PA) AWB	Pioneer Y07-07D (PA) AWP	Drilling	3867.99	2308.72	9430.00	9863.37	48.42	9863.37	PASS
SEC.07-T02N-R64W	SLOT#06 PIONEER D31-735 (706'FNL & 2219'FEL, SEC.07)	PIONEER D31-735	PIONEER D31-735 AWB	PIONEER D31-735 AWP	Drilling	2086.01	877.32	7930.00	3010.37	48.46	8130.00	PASS
SEC.07-T02N-R64W	SLOT#07 PIONEER D31-725 (707'FNL & 2097'FEL, SEC.07)	PIONEER D31-725	PIONEER D31-725 AWB	PIONEER D31-725 AWP	Drilling	2182.75	897.47	8030.00	2615.08	49.90	8830.00	PASS
SEC.07-T02N-R64W	SLOT#04 PIONEER D31-716 (707'FNL & 2074'FEL, SEC.07)	PIONEER D31-716	PIONEER D31-716 AWB	PIONEER D31-716 AWP	Drilling	2014.70	925.15	8030.00	2376.33	51.68	9730.00	PASS
SEC.07-T02N-R64W	SLOT#13 Perkins 31-7 (SI)	Perkins 31-7 (SI)	Perkins 31-7 (SI) AWB	Perkins 31-7 (SI) AWP	Drilling	30.00	1039.60	8130.00	8667.59	57.60	8667.59	PASS
SEC.07-T02N-R64W	SLOT#11 HP Y07-09 (PR)	HP Y07-09 (PR)	HP Y07-09 (PR) AWB	HP Y07-09 (PR) AWP	Drilling	2209.60	3510.17	10730.00	12191.64	59.52	12191.64	PASS
SEC.07-T02N-R64W	SLOT#14 Perkins USX Y 7-17 (SI)	Perkins USX Y 7-17 (SI)	Perkins USX Y 7-17 (SI) AWB	Perkins USX Y 7-17 (SI) AWP	Drilling	2332.18	1756.82	8830.00	9861.71	67.80	9861.71	PASS