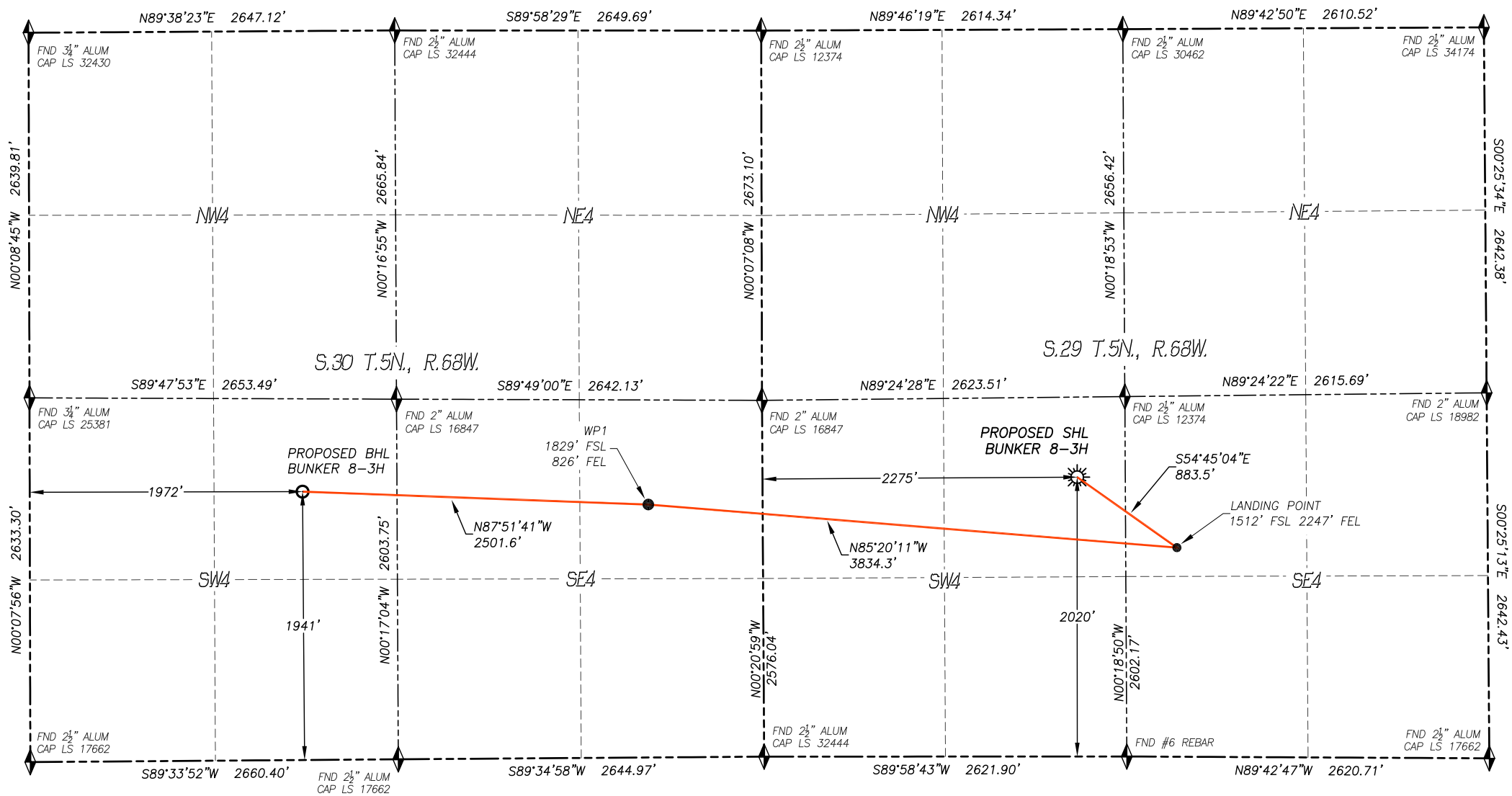


WELL LOCATION CERTIFICATE
BUNKER 8-3H
SECTION 29, TOWNSHIP 5 NORTH, RANGE 68 WEST OF THE 6TH P.M.



IN ACCORDANCE WITH A REQUEST FROM MAGPIE OIL AND GAS, DALEY LAND SURVEYING, INC. HAS DETERMINED THE SURFACE LOCATION OF THE BUNKER 8-3H WELL TO BE 2020' FSL, 2275' FWL, AS MEASURED AT NINETY (90) DEGREES FROM THE SECTION LINES OF SECTION 29, TOWNSHIP 5 NORTH, RANGE 68 WEST AND THE BOTTOM HOLE LOCATION TO BE 1941' FSL, 1972' FEL, AS MEASURED AT NINETY (90) DEGREES FROM THE SECTION LINES OF SECTION 30, TOWNSHIP 5 NORTH, RANGE 68 WEST, OF THE 6TH PRINCIPAL MERIDIAN, LARIMER COUNTY, COLORADO.

I HEREBY STATE THAT THIS WELL LOCATION CERTIFICATE WAS PREPARED BY ME OR UNDER MY DIRECT SUPERVISION, THAT THE WORK WAS COMPLETED ON 9/10/2018 FOR AND ON BEHALF OF MAGPIE OIL AND GAS, AND THAT THIS MAP DOES NOT REPRESENT A BOUNDARY SURVEY, IT IS NOT A LAND SURVEY PLAT OR AN IMPROVEMENT SURVEY PLAT AND IT IS NOT TO BE RELIED UPON FOR THE ESTABLISHMENT OF FENCE, BUILDING OR OTHER FUTURE IMPROVEMENT LINES.

- NOTES:**
- BEARINGS FOR THIS MAP ARE ASSUMED AND BASED UPON GPS OBSERVATIONS MADE BETWEEN MONUMENTS LOCATED AT THE SOUTH QUARTER CORNER AND THE SOUTHWEST CORNER OF SECTION 29, T.5N., R.68W.
 - HORIZONTAL DATUM IS NAD83.
 - VERTICAL DATUM IS NAVD88 AND ORIGINATES FROM THE LOCAL C.O.R.S. NETWORK, UTILIZING THE GEOID12A MODEL.
 - SEE LOCATION DRAWING FOR VISIBLE IMPROVEMENTS WITHIN 500' OF PROPOSED DISTURBED AREA.
 - SURFACE USE: WELL PAD/AGRICULTURAL.
 - INST. OPERATOR: KYLE DALEY.

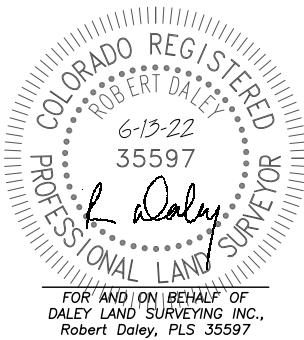
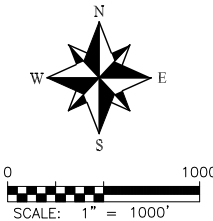
NEAREST CULTURAL ITEMS:	
RESIDENTIAL BUILDING UNIT:	
BUILDING UNIT:	1988'± SE
HIGH OCC. BLD. UNIT:	1973'± NW
DES. OUTSIDE ACTIVITY AREA:	5280'±
PUBLIC ROAD:	2199'± S
ABOVE GROUND UTILITY:	2228'± W
RAILROAD:	5280'±
PROPERTY LINE:	348'± E
SCHOOL FACILITY:	5280'±
SCHOOL PROPERTY LINE:	5280'±
CHILD CARE CENTER:	5280'±

NAD 83 LATITUDE AND LONGITUDE

SURFACE LOCATION:	
LATITUDE:	N40.36940°
LONGITUDE:	W105.03201°
ELEV:	4992'
PDOP:	1.2
QTR/QTR:	NE4/SW4

LANDING POINT/TPZ:	
LATITUDE:	N40.36799°
LONGITUDE:	W105.02943°
WP1:	
LATITUDE:	N40.36890°
LONGITUDE:	W105.04314°
BOTTOM HOLE:	
LATITUDE:	N40.36919°
LONGITUDE:	W105.05211°

- LEGEND**
- FOUND MONUMENT
 - CALCULATED POSITION
 - PROPOSED WELL
 - BOTTOM HOLE
 - ABANDONED WELL
 - EXISTING WELL
 - TPZ TOP PRODUCING ZONE



DALEY LAND SURVEYING, INC.
17011 LINCOLN AVE. #301
PARKER, CO 80138
303.953.9841